



**Global Shelter Cluster**

ShelterCluster.org

Coordinating Humanitarian Shelter

# NFI Practices Workshop

Bangkok, May 15<sup>th</sup> -16<sup>th</sup>



Humanitarian Aid  
and Civil Protection

# WHAT are NFIs?


## Non Food Items, Core Relief Items, Essential HH Items, Emergency Items

From Wikipedia, the free encyclopedia

**Non-food items** (NFIs) are items other than food. The term is especially used in humanitarian contexts, when providing NFIs to those affected by natural disasters or war may be a life-saving priority. Typically, they include essential household items such as blankets, plastic sheets, buckets and other containers for water, cooking items and soap.<sup>[1]</sup>

### References [edit]

- <sup>↑</sup> "Gender and non-food items (NFIs) in emergencies"  (PDF). World Health Organisation. December 2006. Re

 *This tool article is a stub. You can help Wikipedia by expanding it.*



**« Non Food Items » means any non-food article, tool, utensil,..., which contributes to the physical and/or psychological health of populations affected by a significant deterioration in their environment which threatens their survival.**

It is impossible to make an exhaustive list of Non Food Items. the list below covers the most common items.

shelter, bedding equipment, kitchen utensils, hygiene material, clothes, heating and lighting equipment



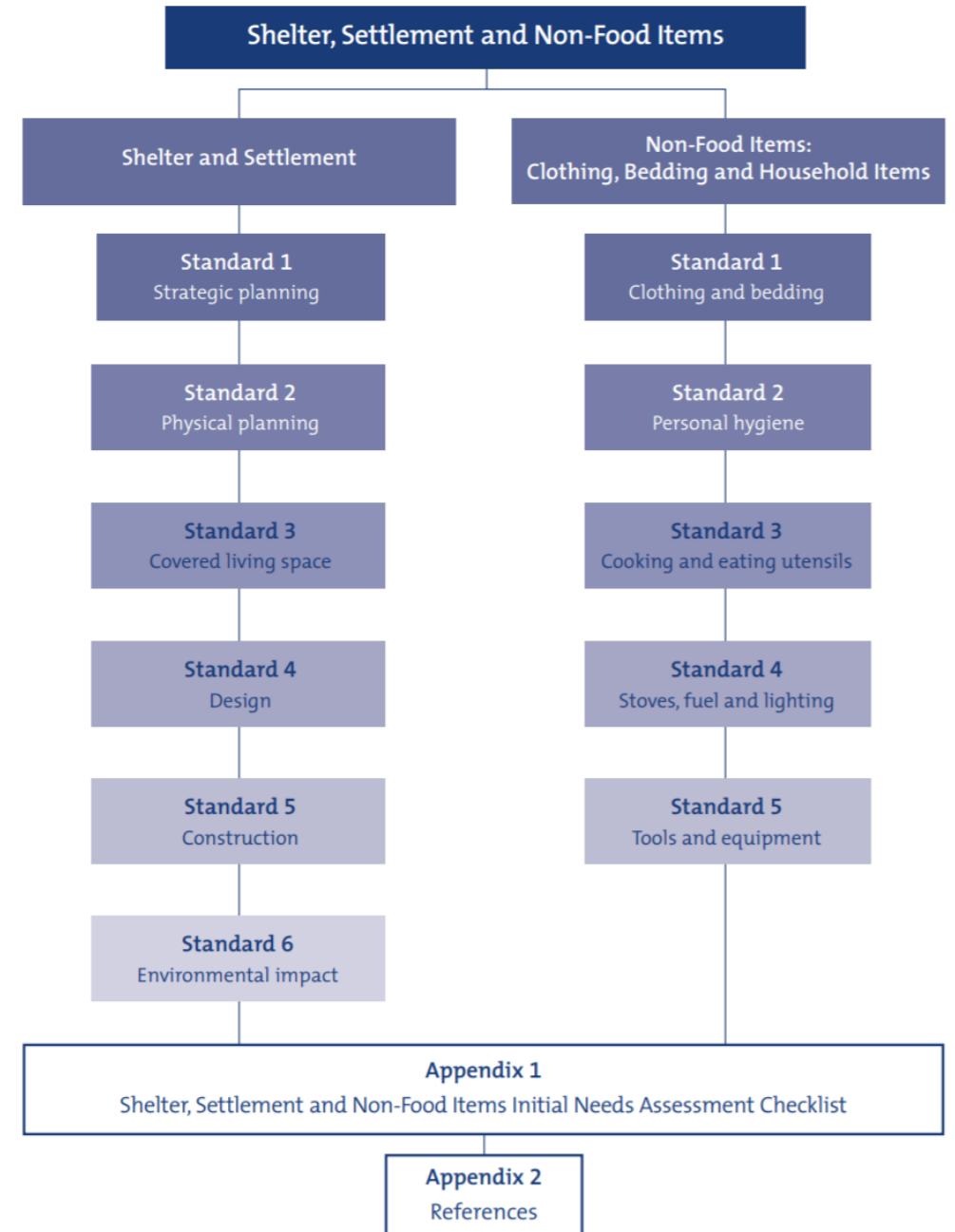
Core Relief Items (CRIs) sometimes known as Non Food items (NFIs) are items other than food used in humanitarian contexts, when providing assistance to those affected by natural disasters or war. In Syria, UNHCR's CRI kits include essential household items such as mattresses, blankets, plastic sheets, containers for water, cooking utensils and hygiene kits. In addition, other items can be added to the kits during times of extra hardship, such as rechargeable fans in very hot weather.



Humanitarian Aid and Civil Protection

## 2. Non-food items: clothing, bedding and household items

Clothing, blankets and bedding materials meet the most personal human needs for shelter from the climate and for the maintenance of health, privacy and dignity. Access to basic goods and supplies is required to enable affected populations to prepare and consume food, provide thermal comfort, meet personal hygiene needs and build, maintain or repair shelters (see [Hygiene promotion standard 2](#) and [Water supply standard 1](#)).



## Non-food items standard 1: Individual, general household and shelter support items

The affected population has sufficient individual, general household and shelter support items to ensure their health, dignity, safety and well-being.

## Non-food items standard 2: Clothing and bedding

The disaster-affected population has sufficient clothing, blankets and bedding to ensure their personal comfort, dignity, health and well-being.

## Non-food items standard 3: Cooking and eating utensils

The disaster-affected population has access to culturally appropriate items for preparing and storing food, and for cooking, eating and drinking.

## Non-food items standard 4: Stoves, fuel and lighting

The disaster-affected population has access to a safe, fuel-efficient stove and an accessible supply of fuel or domestic energy, or to communal cooking facilities. Each household also has access to appropriate means of providing sustainable artificial lighting to ensure personal safety.

## Non-food items standard 5: Tools and fixings

The affected population, when responsible for the construction or maintenance of their shelter or for debris removal, has access to the necessary tools, fixings and complementary training.

## 1.2 NFI classification

As agreed between the IASC Water, Sanitation and Hygiene Cluster and the IASC Emergency Shelter Cluster<sup>1</sup>, NFIs are divided into three broad categories, of which the following two will be the main focus:

- **General Household Support Items**, such as cooking sets, blankets, jerry-cans, and buckets, which can usually be distributed without additional instruction, promotion, or education; and
- **Household Shelter Construction Support Items**, such as tool kits and construction materials, which usually require additional instruction, promotion, and/or education (» see section 2.3).

For information purposes, the third category is outlined below:

- **Household WASH Support Items**, such as mosquito nets and household water treatment which usually require additional instruction, promotion, and/or education.

Fig 1.2 Definition of NFIs for the purpose of these guidelines

Items which usually do not require additional instruction, promotion, or education, including:

### General Household Support Items

e.g. Stove, fuel and lighting  
e.g. Clothing and bedding

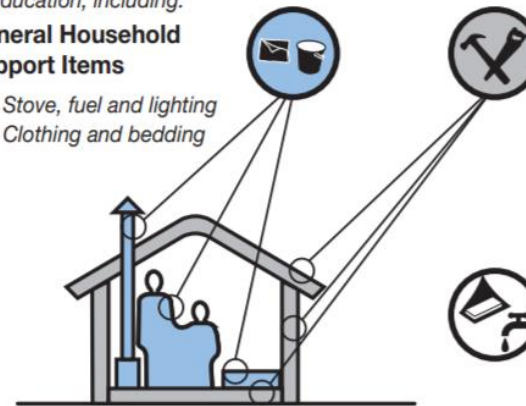
Items which usually require additional instruction, promotion, and/or education, including:

### Household Shelter Construction Support Items

- Construction materials  
e.g. plastic sheeting, CGI  
e.g. timber, bamboo, bricks  
e.g. flooring, roof insulation
- Tool kits  
e.g. hammer, shovel, axe

### Household WASH Support Items

e.g. Mosquito nets  
e.g. Household water treatment



1

See section 8.4 for an excerpt from the proposed 'INTER-CLUSTER MATRIX - WASH/Emergency Shelter at Country Level'. The excerpt contains further details on these packages

# WHY are NFIs so important for Shelter?

- “Non Food Items” or essential household items, such as tarpaulins, blankets or kitchen sets are an central part of most shelter responses as is reflected in allocation of funds:

| Allocation of funds* for shelter assistance worldwide:                                   | 2015    | 2016    | 2017    |
|--|---------|---------|---------|
| Shelter related <b>NFI</b> (E.g. tarps, essential HH items)                              | 16.5Mio | 12.2Mio | 10.0Mio |
| other <b>Shelter</b> assistance (e.g. housing reconstruction, technical assistance etc.) | 6.3Mio  | 3.6Mio  | 4.8Mio  |

\* Numbers collated from Shelter Cluster website

- In terms of people assisted the number are even more significant. In a majority of responses 80-90% of the people that received shelter assistance have received it through NFI mainly or only!

# WHAT is most important about NFIs?

Given the significance of NFI in Shelter relief operations due attention should be given to assure:

- **Adequacy** of NFIs as well as the distribution modalities to meet the needs of the beneficiaries (what type of items, when, for whom and how to best to reach the beneficiaries).
- **Equity of assistance** to beneficiaries receiving shelter & household NFIs (quantity, type and quality of items, targeting).
- **Quality of NFI** meets the requirements (specifications, quality control, monitoring & evaluation) so that funds invested serve the purpose to adequately address beneficiaries needs.

# Global Shelter Cluster NFI Practices WG

The GSC has created the NFI Practices WG with the aim to **improve how we work with NFIs** to meet beneficiaries needs, by:

- **Compiling existing tools and implementation practices** to capitalize on experiences from country clusters with large NFI operations.
- Identifying existing needs for resources regarding NFI practices (trainings, manuals, etc.) and **supporting the development of relevant guidance/ tools**.
- **Disseminating and sharing best practices** with country clusters and practitioners.
- Supporting the development of solid **technical specifications** for globally used items
- **Advocating** to ensure that appropriate attention is paid to NFI issues related to shelter!

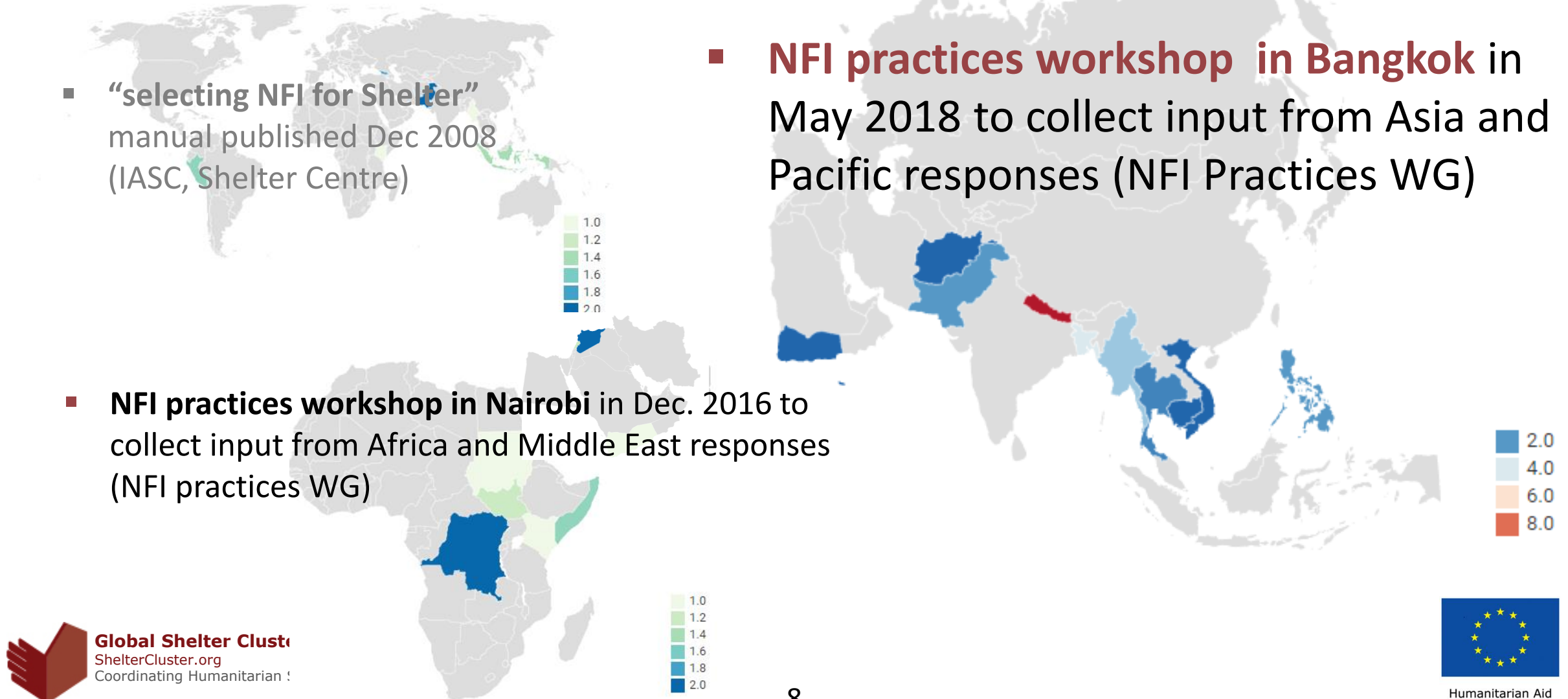
# Working to improve NFI practices



- “selecting NFI for Shelter” manual published Dec 2008 (IASC, Shelter Centre)

- **NFI practices workshop in Nairobi** in Dec. 2016 to collect input from Africa and Middle East responses (NFI practices WG)

- **NFI practices workshop in Bangkok** in May 2018 to collect input from Asia and Pacific responses (NFI Practices WG)



# Recommendations from Nairobi Workshop

- Advocate for the GSC to ensure that commensurate attention is paid to NFI issues related to shelter!
- Policies developed by GSC should be through the lens of NFI programs as well as shelter!
- Assure dedicated resources (e.g. technical coordinators) to:
  - **Collect, review and publish resources/documents and share or disseminate them through appropriate channels.**
  - **develop good practice documents and other resources (trainings etc.)**
  - **Set up and moderate a dedicated NFI Community of Practice**

# Topics of interest identified in the Nairobi Workshop

## ■ NFI Vulnerability Scorecards

- Build off experience from S. Sudan, DRC and Somalia.
- Link this into a 2 country (Somalia+1) pilot study to look at ranking of NFIs for different disaster contexts and climate and simultaneously **carry out detailed evaluation of scorecards**
- potentially develop a 'build your own' kit.

## ■ Common Pipeline

- Develop Common Pipeline toolkit with recommended SOPs and examples of forms used
- Share resources and lessons learned South Sudan, Pakistan, Haiti, Bangladesh etc.

# Topics of interest identified in the Nairobi Workshop

## ■ NFI Fairs

- Support NFI/Shelter cluster in DRC (UNICEF) to finalize NFI fairs manual, SOPs and example documents and translate document into English. Publish and disseminate.
- Explore NFI Fair modality implementation in other contexts – Promote as best practice?

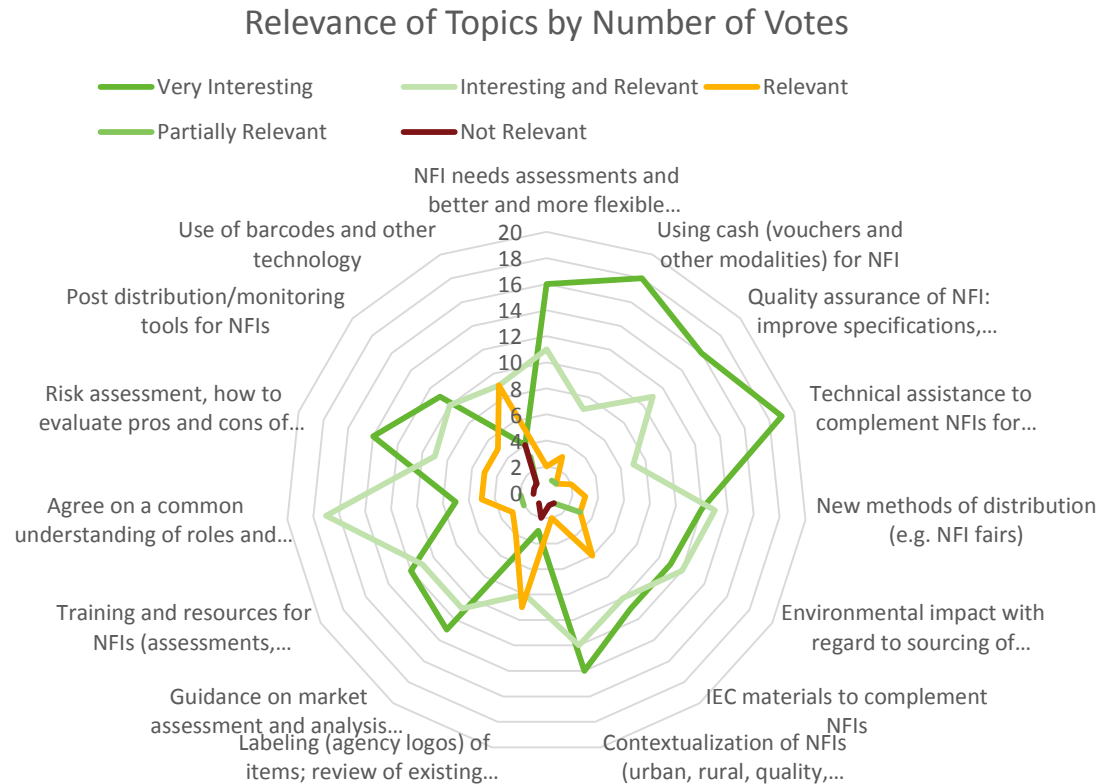
## ■ Quality Control for NFIs

- Develop guidance on key QC equipment, how to use and potential suppliers.
- At minimum, provide details of QC tools and providers, publish and disseminate.
- Consider pre-positioning QC equipment and common items through cluster partners

## ■ Harnessing New Technology

- Linking practitioners by maintaining a database of competent practitioners by region
- Knowledge Management- Community of Practice? D-group?

# Topics for NFI practices Workshop in Bangkok



1. Technical assistance
2. Modalities for NFI distribution
3. Needs assessment & targeting
4. Contextualization of NFIs
5. Quality assurance, Specifications
6. Market assessment, Risk assessment
7. Procurement & Environmental impact

# NFI Practices Workshop Agenda

| Agenda Item  | Timing   | Presenters                                       |
|--|----------|--|
| Registration and welcome coffee  | 8:00AM   |  |
| <b>Intro to the workshop</b> , Recap of 2016 Workshop, themes, purpose, goals and outputs expected, and proposed way forward           | 8:30 AM  | Cecilia Schmölder (IFRC) & Renee Wynween (UNHCR) |
| quick Introduction round of participants   | 9:00 AM  |  |
| <b>NFI distribution exercise/simulation</b>  | 9:15 AM  | Joseph Ashmore (IOM), Alberto Piccioli (IOM)     |
| COFFE BREAK  | 10:45 AM |  |
| Simulation Debrief   | 11:00 AM | Joseph Ashmore (IOM), Alberto Piccioli (IOM)     |
| LUNCH BREAK  | 12:00 PM |  |
| <b>Intro on Selecting NFI for shelter Manual</b> ; first brainstorming what are the needs for resources/guidance with regard to NFI?   | 1:00 PM  | Cecilia  |
| <b>Intro Needs assessment, PDM, Beneficiary accountability</b>   | 1:30 PM  | Renee  |
| Vulnerability scoring via Kobo for winterization response, experience from Afghanistan   | 1:45 PM  | Renee and Martha (Shelter Cluster Afghanistan)   |
| Assessing winterisation needs through focus groups discussions and markets assessments, experience from Nepal after Ghorka Earth quake | 2:15 PM  | Betisa Egea (German Red Cross)                   |
| Discussion, Conclusions, Recommendations   | 2:45 PM  | All  |
| COFFE BREAK  | 2:45 PM  |  |
| <b>Intro Contextualization of NFIs</b>   | 3:15 PM  | Cecilia  |
| Challenges with NFIs distribution in Cox Bazar, experience from Bangladesh   | 3:30 PM  | Bishnu Gotame (Save the Children)                |
| Challenges and solutions for NFI and Shelter in Cox's Bazar, experience from Bangladesh  | 4:00 PM  | Malte Landgraf (German Red Cross)                |
| Programming guidance for NFI distributions, experiences from Philippines, Vietnam and Nepal  | 4:30 PM  | Mario Flores and Allen Carmona (HfH)             |
| Agreeing on common standards for Nepal context, experience from Nepal  | 4:00 PM  | Sanjeev Hada IFRC Nepal                          |
| Discussion, Conclusions, Recommendations   | 5:00 PM  | All  |

|   |          |  |
|---|----------|--|
| <b>Intro Modalities for NFI distribution</b>                                  | 8:45 AM  | Renee                                      |
| Using cash (vouchers and other modalities) for NFIs; experience from Nepal    | 9:00 AM  | Ananda Sapkota (Save the Children)         |
| Modalities for NFI experience from Nepal                                      | 9:30 AM  | Betisa Egea (German Red Cross)             |
| NFI & cash assistance to returnees from Pakistan, experience from Afghanistan | 10:00 AM | IOM, Abdul Nassir Karakar                  |
| COFFE BREAK   | 10:30 AM |  |
| <b>Intro Technical assistance to complement shelter NFIs</b>                  | 10:45 AM | Cecilia                                    |
| Technical assistance to complement NFIs for shelter, experience Bangladesh    | 11:00 AM | Bishnu Gotame, Save the children           |
| Measuring impact of technical assistance, research from Nepal                 | 11:30 AM | Loren Lockwood (CRS)                       |
| LUNCH BREAK   | 12:00 PM |  |
| <b>Intro Procurement and Environmental Impact</b>                             | 1:00 PM  | Cecilia                                    |
| Common supply chain   | 1:15 PM  | Keisuke Kamiya (IOM)                       |
| Greening the supply chain-environmental impact of shelter NFI...              | 1:45 PM  | Leeanne Marshall (AusRC) Jake Zarins (HfH) |
| Quality Assurance for NFI   | 2:15 PM  | TBC  |
| COFFE BREAK   | 2:45 PM  |  |
| Conclusions, Recommendations, way forward                                     | 3:15 PM  |  |

# QUESTIONS for POLL after Intro

- According to your experience, are NFI really that important for:
  - emergency shelter response? (most important, important, less important) (yes/no)
  - Recovery shelter response? (most important, important, less important) (yes/no)
- Do you think/feel that the topics around NFI practices receives enough attention? (yes/no)
  - Which ones get most attention?
  - Which ones need more attention?
- Is enough effort dedicated to collect best practices for NFI? (yes/no)
  - Who should do it?
  - How could this be done?
  - How could you contribute?
  - (if yes) What could be done to better collect existing practices, tools, experience?
- Is enough effort dedicated to share & disseminate best practices for NFI? (yes/no)
  - Who should do it?
  - How could this be done? What would be most interesting/appealing to you?
  - How could you contribute?
  - How would you like to hear/learn about best practices, new developments etc. from the sector?
- Is enough effort dedicated to develop best practices guidance/tools/other resources for NFI? (yes/no)
  - Who should do it?
  - How could this be done?
  - How could you contribute?
- According to your experience is there a relevant difference for using NFIs in conflict and natural disasters? (yes/no)
  - What are the main differences?
- Are the essential items NEEDED the same or rather context specific? (same/context specific)
  - If the same, what are those items?
  - Which items are context specific?
- Would you like to be part of a dedicated NFI Community of Practice? (yes/no)
  - How would you like to participate? (receive regular info; post info I find interesting; answer questions & engage in discussions; moderate the group)
  - What would you expect from a dedicated community of practice?



**Global Shelter Cluster**

ShelterCluster.org

Coordinating Humanitarian Shelter



Humanitarian Aid  
and Civil Protection

# QUESTIONS for POLL after Intro

- Have you ever worked with NFI Vulnerability Scorecards?
  - Would it be a useful tool to develop?
- Do you know (ever heard of) the concept of NFI Fairs?
  - How do you like the idea?
  - In what context could it be applicable/useful?
- What is most important to assure good quality of NFIs?
  - Detailed technical specifications for procurement
  - Technical research & development and testing of items
  - Rigorous quality control when receiving from supplier
- Common Pipeline
  - Have you ever used a common pipeline to “procure” your NFIs?
  - Do you think it is useful?
- What New Technology could be helpful to improve NFI practices?
  - Linking practitioners by maintaining a database of competent practitioners by region
  - Knowledge Management- Community of Practice? D-group?
  - Rapid registration, barcodes, etc . For registration and monitoring...