

Vulnerability scoring via Kobo for winterization response



Afghanistan Shelter Cluster
ShelterCluster.org
Coordinating Humanitarian Shelter

Beneficiary selection process flow

Market price monitoring

Receiving lists from authorities and community leaders

Field assessment

Beneficiary selection

Assistance distribution

Post-distribution monitoring

EXCEL

- Easy to cover numerous geographical areas within short time
- Consolidation of the lists at the field level
- **Data protection concerns**
- **High risk of exclusion of certain groups**
- **Not applicable for areas with no Government authorities present**

KOBO / paper form

In remote locations where assessment and distribution were to be made in one visit:

- Use of Kobo on tablets, and simultaneous recording of the scorecard results on paper for beneficiary selection

Where second visit was possible:

- Data collection on tablet / paper (if paper, subsequent entry at the office).

EXCEL

- **Inclusion of other vulnerable individuals from the community, identified during the physical visit**

Selection of beneficiaries based on need and vulnerability (see decision tree log in the next slide)

EXCEL

Each partner using their own tools for beneficiary management, most popular being Excel beneficiary lists

Kobo

Harmonized post-distribution form at the cluster level. Each agency conducting PDM individually, using the same form

Cluster plans to conduct joint analysis of findings

<https://enketo.unhcr.org/x/#YYI7>



Application of the scorecard

Heating need priority

- **Priority 1 (biggest need), 2 (in need, but less) and 0 (no need for winterization identified)**
- Income less than Afs 5,000
- No sufficient fuel and heating device
- Cannot afford fuel & heating device

Vulnerability score

- **Score: 0 (not vulnerable) to over 9 (the most vulnerable)**
- More than X children in the family
- Elderly, child, disabled or female headed household
- Chronically ill family members
- Very large family (more than 8 family members)

Need for complementary clothing

- Clothing is a priority need, and
- There are people observed in the HH wearing poor clothing (observation)

Need for additional blankets

- No blankets in the HH or proportion of blankets vs family members is insufficient

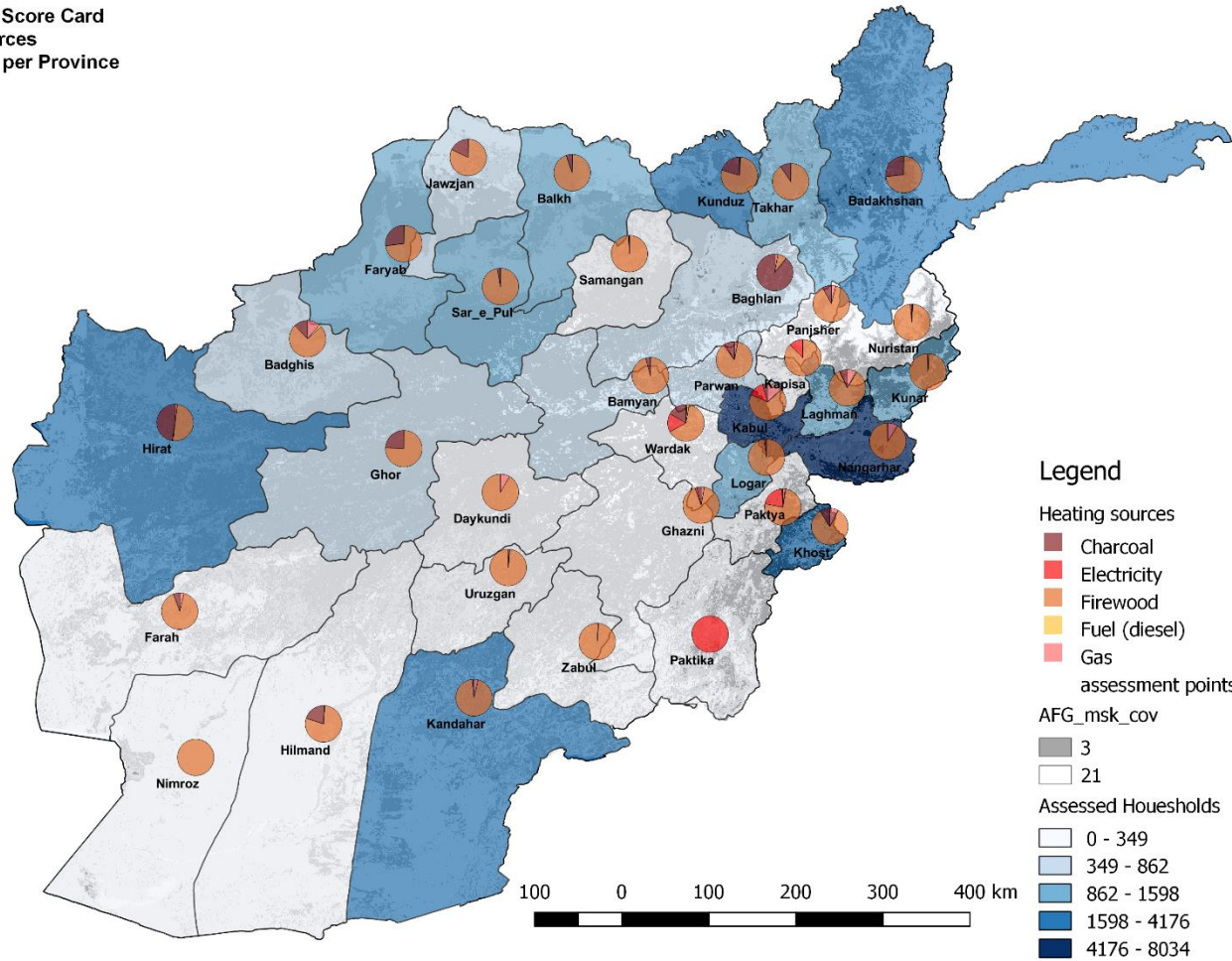
Shelter vulnerability score

- Living in the open, tent, damaged shelter
- Rent a house
- Risk of eviction (perceptual)
- Low income

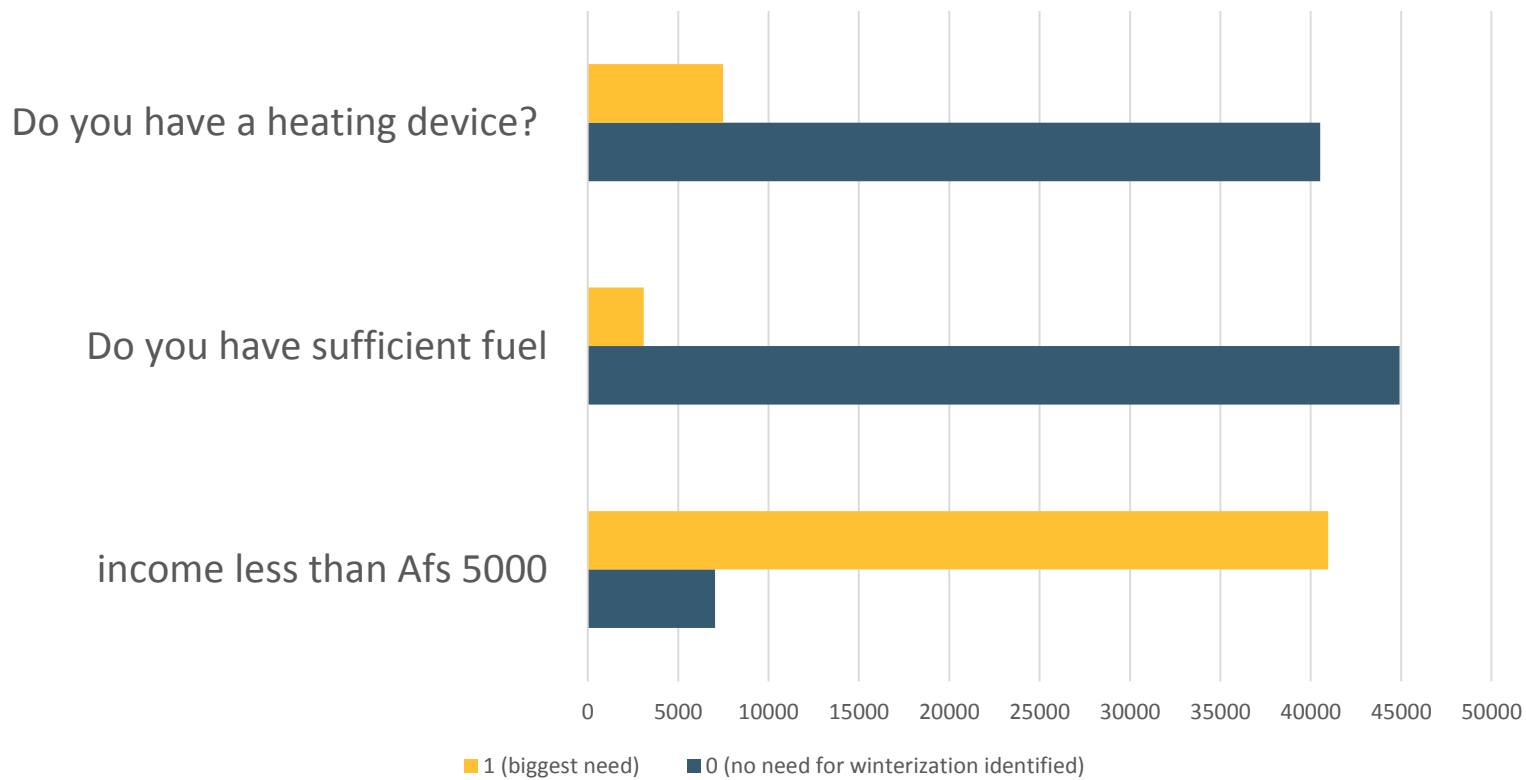


Heating (Example)

Afghanistan Score Card
Heating Sources
Assessment per Province

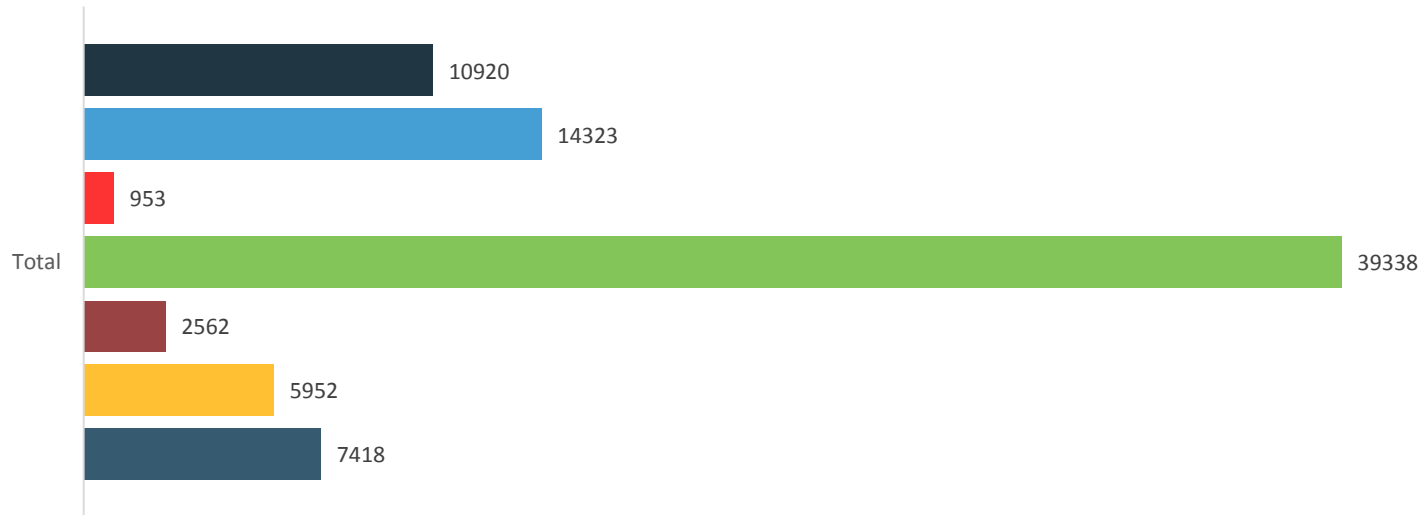


Heating Need Priority

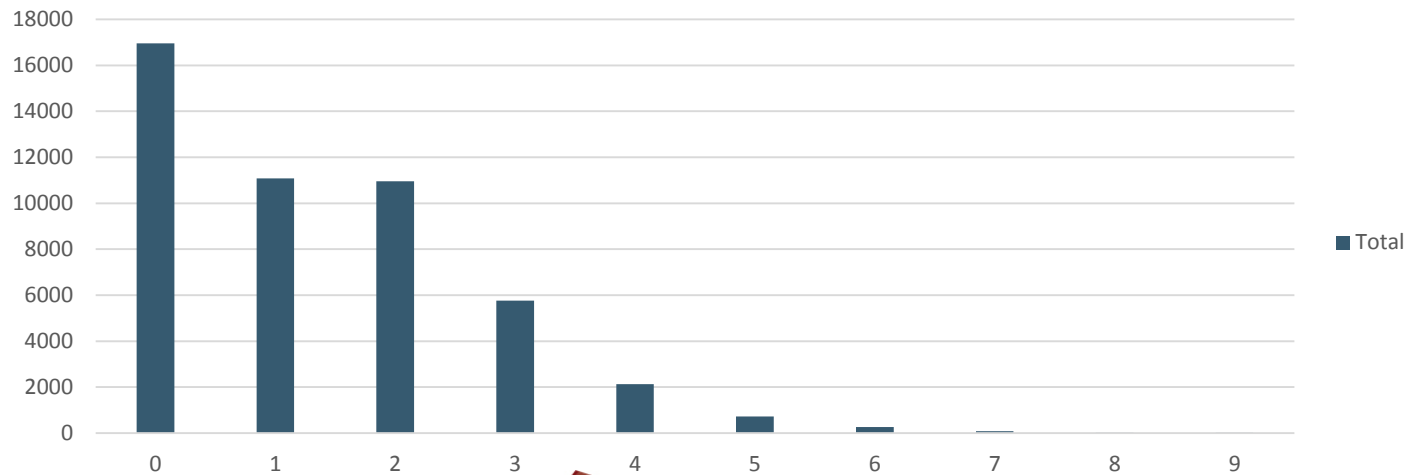


Vulnerability

- Sum of Very large family (more 8 members)
- Sum of Families with chronically ill members
- Sum of Child headed household
- Sum of Very poor families
- Sum of Disabled head of household
- Sum of Elderly head of household (>60)
- Sum of Female head of household

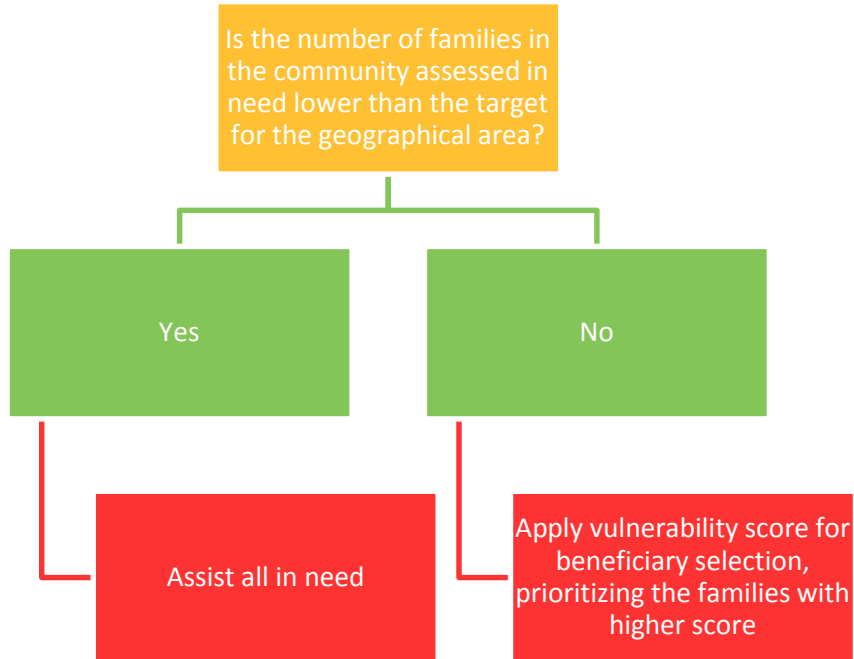


Final Vulnerability Score

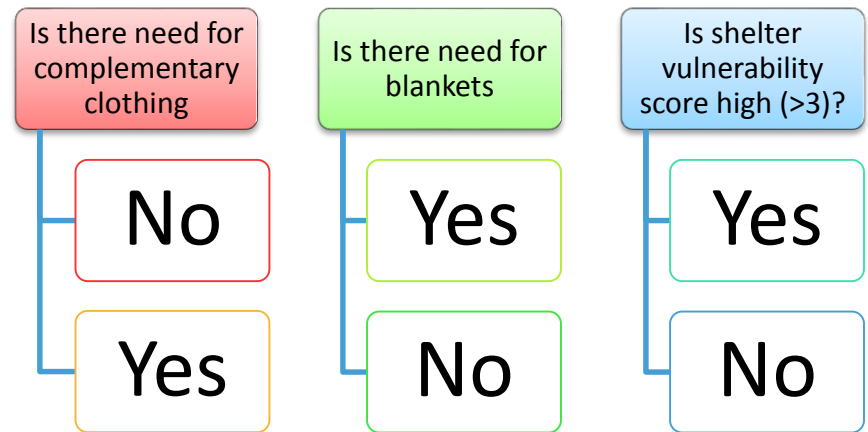


Beneficiary selection and assistance package

Beneficiary selection decision tree



Assistance package tailoring



Further questions / issues

- Definition of the need and vulnerability specific to a context, based on evidence
- Understanding the need and vulnerability
 - Assistance is for people in need
 - Vulnerability is specific to certain risks, not universal
- Separation of responsibilities between Shelter Cluster and individual cluster members in the process of the joint response
- Finding balance between universally agreed assistance package and a package tailored to the needs
- Data protection and data sharing considerations