

SOMALIA Shelter Cluster Meeting

April 17, 2013

NAIROBI

REACH: ACTED, Impact Initiatives, UNOSAT

- Somalia Joint Returns Consortium
- Global Shelter Cluster partnership

BACKGROUND

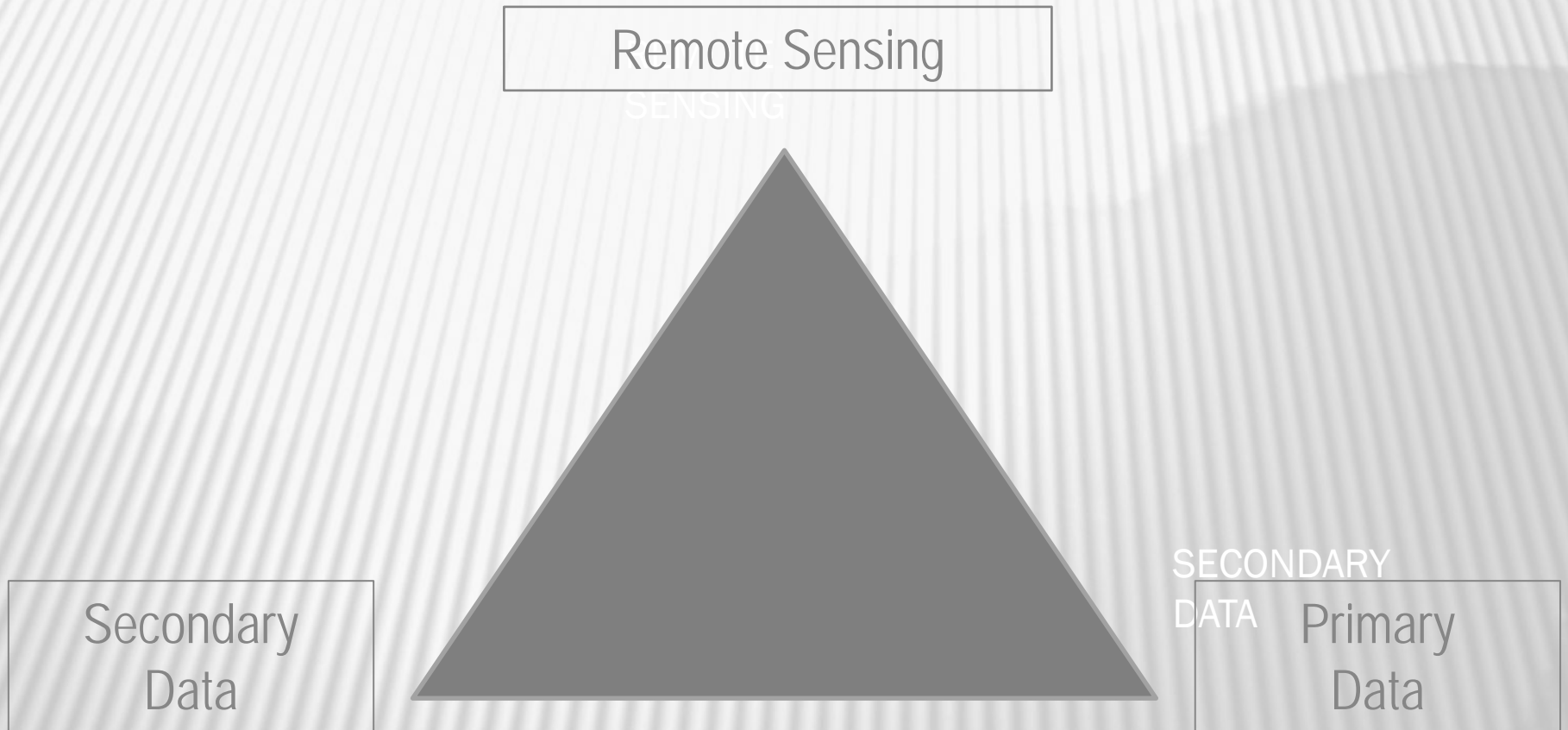
REACH is an initiative hosted by IMPACT and founded in partnership with ACTED and UNOSAT.

Its **aim** is to strengthen humanitarian data collection, processing and dissemination in order to enhance the effectiveness of aid action

The **first deployment** of REACH was in the summer 2010 in Kyrgyzstan, in partnership with the UNHCR-led shelter cluster. In 2012, REACH formalized a partnership with the Global Food Security Cluster (GFSC), co-led by FAO and WFP. REACH also supports the interagency **Needs Assessment Task Force** (co-led by OCHA and WFP) in the deployment of the MIRA.

REACH has to date received **financial contributions** from ACTED, ECHO, OFDA, UNHCR, UNICEF, USAID and USIP.

DATA TRIANGULATION



SHELTER COUNT AND IDENTIFICATION



ShelterCluster.org

Coordinating Humanitarian Shelter

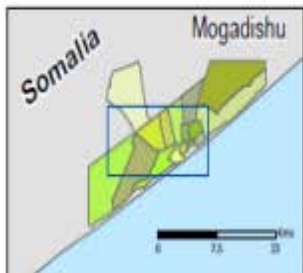
TRI-CLUSTER Mogadishu Response : Camps IDPs

Shelters in Cusmaan Gedi Raage (Hawl Wadaag)

A product of **REACH** Informing more effective humanitarian action

For humanitarian relief purpose only

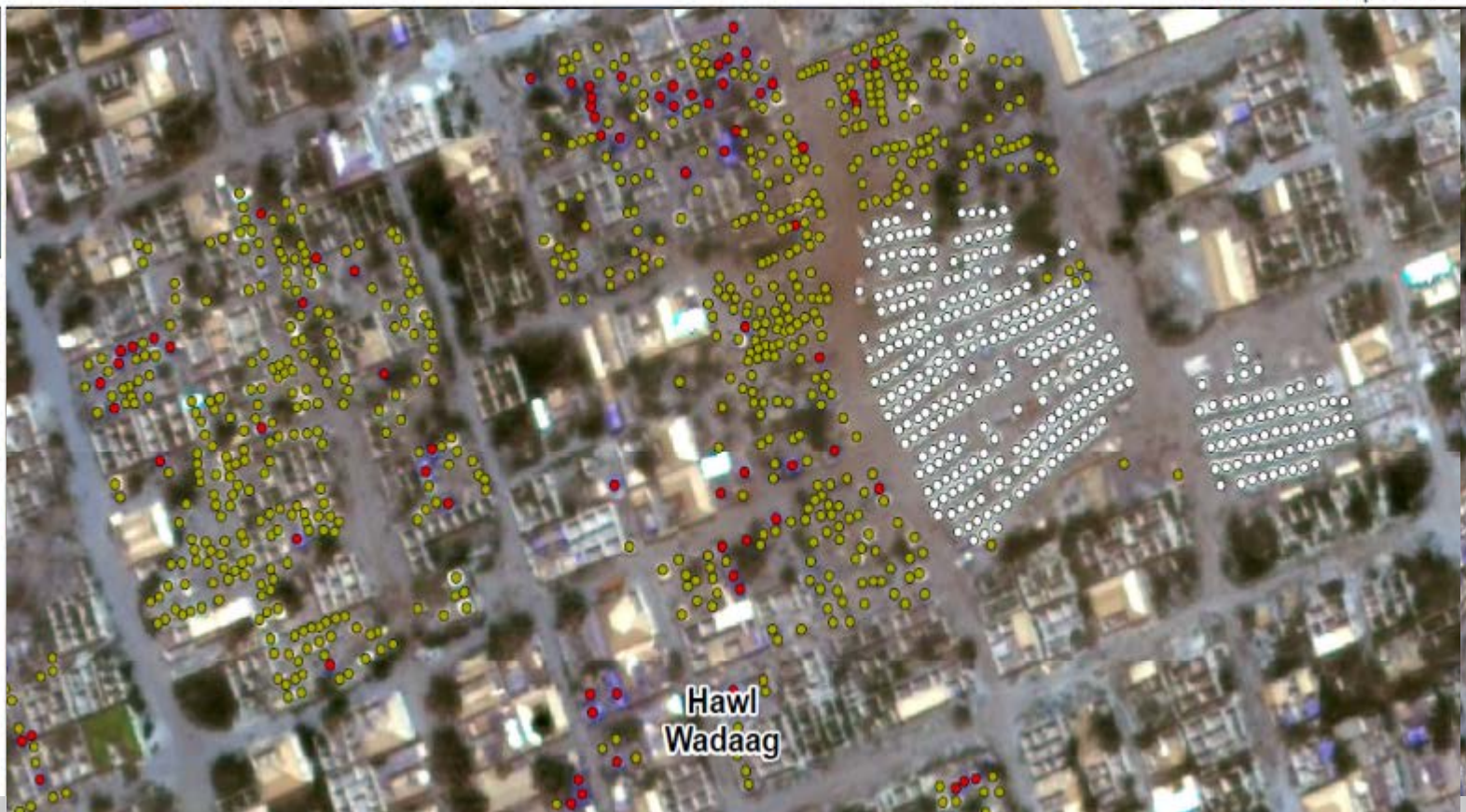
Production date : 14 September 2012



Tent Shelter

Shelter type

- Formal white
- Informal
- Red



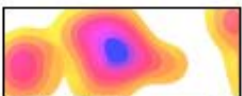
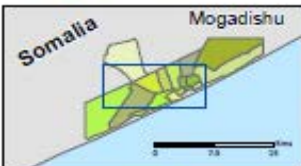
SHELTER DENSITY



ShelterCluster.org
Coordinating Humanitarian Shelter

TRI-CLUSTER Mogadishu Response : Camps IDPs
Shelters concentration in Cusmaan Gedi Raage (Hawi Wadaag)

A product of **REACH** Informing more effective humanitarian action
For humanitarian relief purpose only
Production date : 14 September 2012



Density of tents: orange to blue indicates an increase of tent clustering (analysis based on Worldview-2 imagery recorded on 2 July 2012 - it has not yet been validated on the ground)

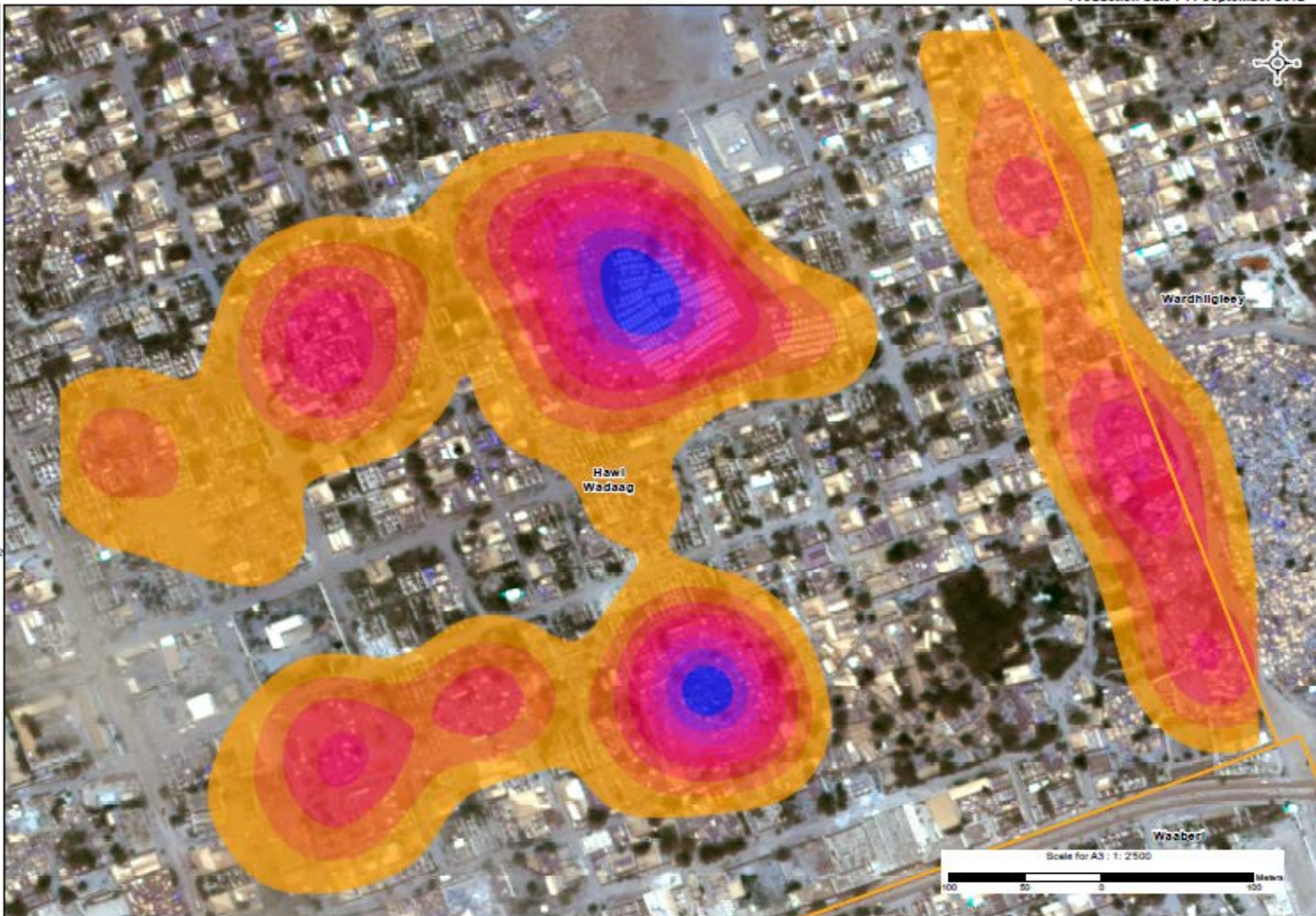
Sources : Shelter analysis: UNOSAT
Image: 02/07/2012 - Worldview-2
Resolution: 50 cm
Projection: WGS 1984 UTM Zone 35S
File: SOM_Mogadishu_Cusmaan_IDP2_A3_14SEP2012
Contact: reach.mapping@impact-initiatives.org

Note: Data, designations and boundaries contained on this map are not warranted to error-free and do not imply acceptance by the REACH partners, associates, donors mentioned on this map

A program of **IMPACT Initiatives**

In partnership with **ACTED**, **unitar**, and **UNOSAT**

Funded by Humanitarian Aid and Civil Protection



INTERACTIVE WEBMAP

The screenshot displays a web browser window with the URL `mogadishu.reach-initiative.org`. The page header features the "REACH Somalia" logo and navigation icons. The main content is a map of Mogadishu, Somalia, showing IDP settlements and water sources. The map is overlaid with a green dashed boundary and contains numerous icons representing different types of water sources and settlements. A "Basemap" label is visible in the top left of the map area.

On the left side, there is a "Table of content" panel with the following sections:

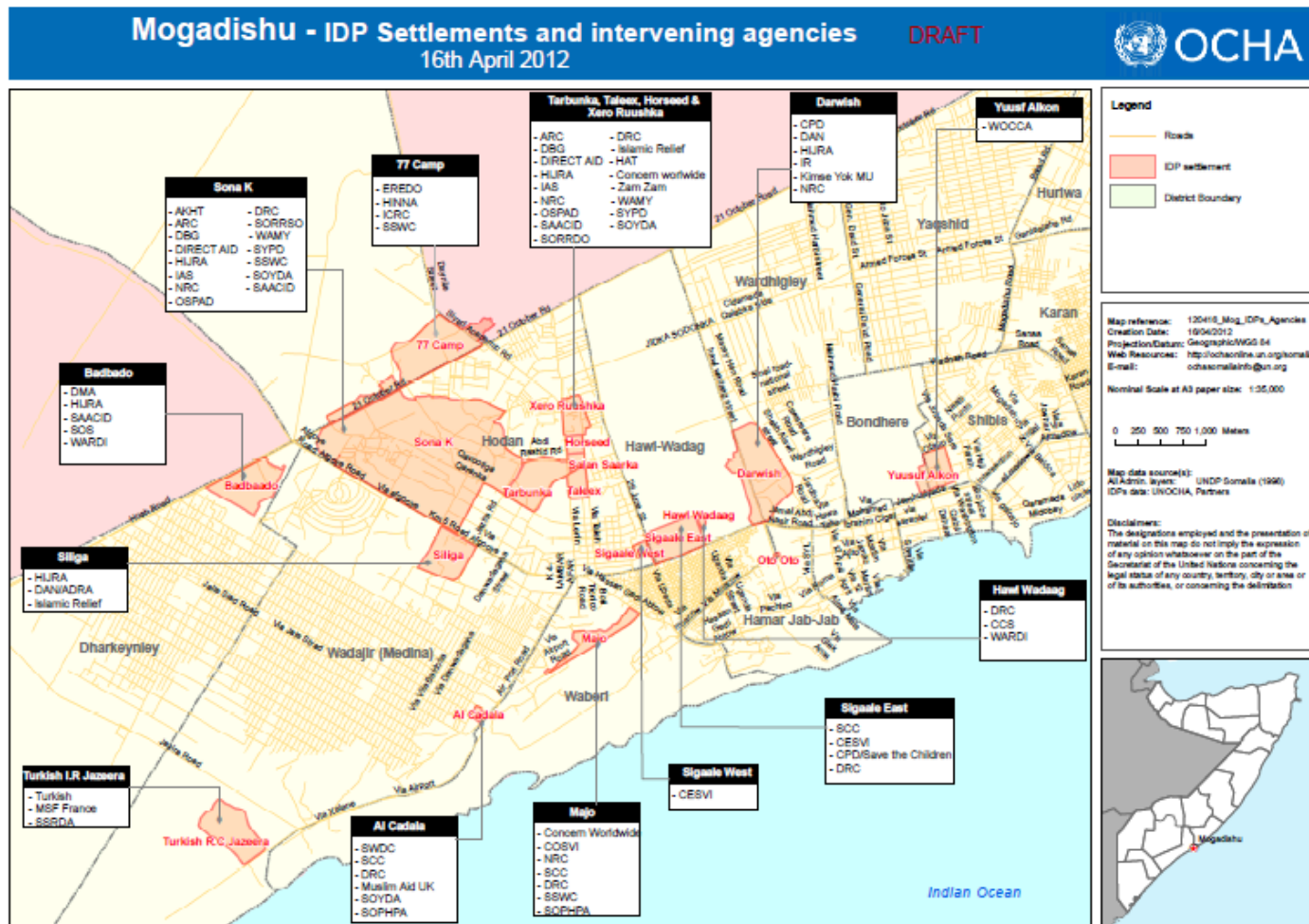
- Layer Visibility
 - Mogadishu IDPs settlements Mapping
 - Water points
 - Garbage
 - Latrines (with number)
 - Health
 - Education
 - Shelter/NFI
 - Mogadishu IDP camp extent
 - Somalia Shelter Cluster Sector Review
- Bookmarks
 - Mogadishu
 - Bossasso
 - Buraco
 - Hargeisa
 - Qardho
 - Garowe
 - Hodan
 - Camp 77

On the right side, there is a "Map legend" panel with the following sections:

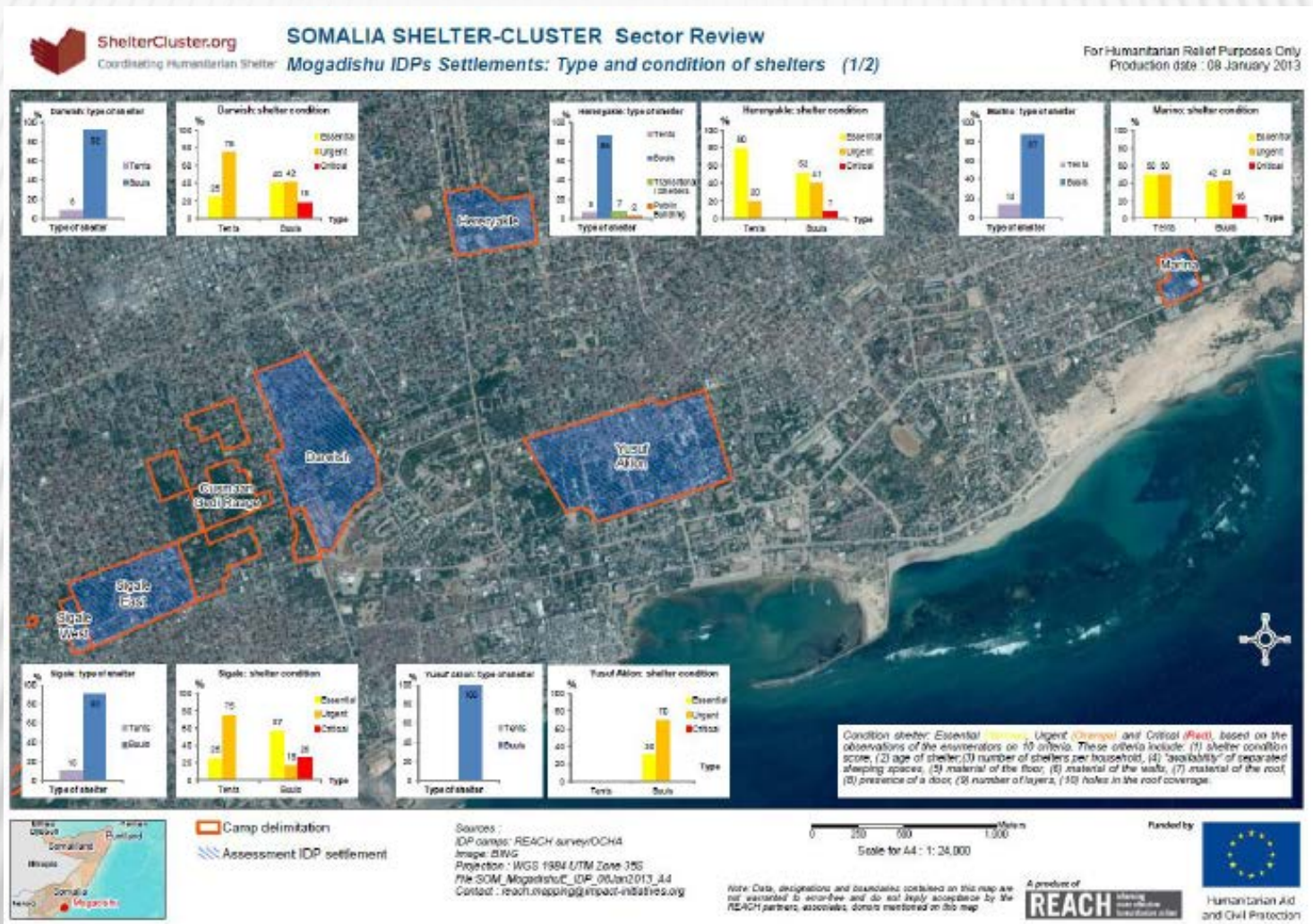
- Mogadishu IDPs settlements Mapping
- Water sources - Functional
 - Borehole
 - Piped system
 - Shallow well
 - Water collection point
 - Water tank
- Water sources - Temporary

The map includes a scale bar for 50 meters and coordinate markers at the bottom: 5042114.0271 and 227815.6080. The browser interface shows Firefox and Google search engines.

MOGADISHU: IDP ACTOR MAP



SHELTER ASSESSMENT DASHBOARD

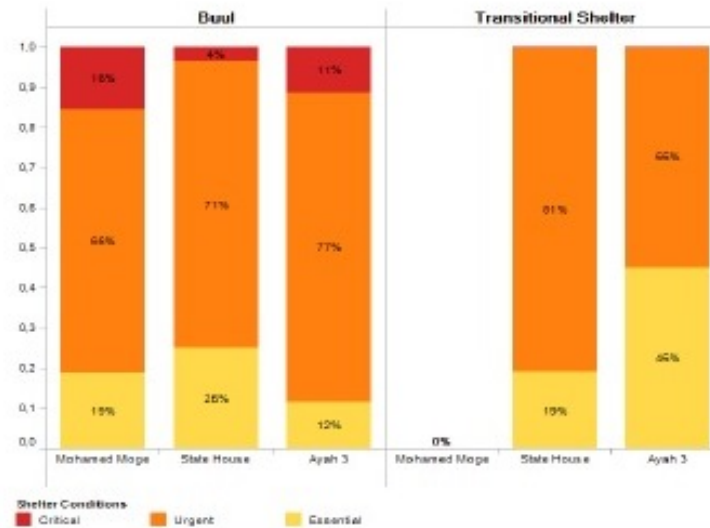




SOMALIA SHELTER SECTOR REVIEW

FACT SHEET #1: HARGEISA

NOVEMBER 2012



Type of Shelter per IDP camp



Types of Shelter
Buul Transitional

This fact sheet covers the IDP camps located in and around the city of Hargeisa in Somaliland, in the north of Somalia. Data was collected from households in a sample of IDP camps to give an indication of the shelter, NFI and health situation.

A product of



Funded by



Humanitarian Aid and Civil Protection

This document has been produced with the financial assistance of the European Commission. The views expressed herein should not be taken, in any way, to reflect the official opinion of the European Commission.

KEY FACTS

Source of funding: Somalia Joint Returns Consortium

Duration: 2 months, from 1 November 2012 until 31 December 2012

Project location: Somalia, with basis in Nairobi

Partners: ACTED (lead agency), UNOSAT and IMPACT (implementing partners), JRC (associated partners) including UNHCR, DRC, FAO, INTERSOS, IOM, Islamic Relief, NRC and OCHA

REACH SOMALIA / Joint Returns Consortium



“Facilitating the development and use of a common M&E methodology to promote better informed, more consistent, and better coordinated programming to support IDP voluntary return in Somalia.”

OBJECTIVES AND BENEFICIARIES

Specific Objective

To facilitate the development and use of a common M&E methodology to promote better informed, more consistent, and better coordinated programming to support IDP voluntary return in Somalia.

Direct Beneficiaries

At country level: Joint Returns Consortium members in Somalia

Indirect Beneficiaries

Returnee populations; other relevant aid stakeholders

PROJECT PARTNERS

Lead agency: ACTED

- Overall Project management (responsibility for outputs) and consolidation of information
- Lead for project external communication and relations
- Where relevant, support to in country operations and recruitment of in country teams

Implementing partner: IMPACT Initiatives

- Hosts REACH
- Hosting of Project Management Team in Geneva, including contract of 3-4 dedicated international staff
- Deployment of team leaders, technical backstopping
- Development of inter agency monitoring database and interactive webmap

Associated partner: JRC

- Support to analysis and ground truthing
- Sharing of relevant data / CRMs / indicators
- Support in drafting of consortium policies and procedures

EXPECTED RESULTS

At Country Level:

1. A common Returns Consortium M&E system is set up → The consortium identifies needs more rapidly and effectively
2. A Returns Consortium Database is online and accessible to all members of mapping unit and of online interactive web-maps → The consortium improves information sharing, coordination and planning among aid actors
3. A Return Consortium Interactive web map and static map are available to relevant partners → JRC enhances its accountability tools, enabling a more effective capitalization of its interventions.

[pending approval by JRC for Phase II]

COUNTRY LEVEL ACTIVITIES

1. Define an M&E framework at RC level
2. Design and develop an interagency data management online platform (based on field piloting of M&E system)
3. Setup of a webmap

COUNTRY LEVEL ACTIVITIES

Activity 1. Define an M&E framework at RC level

- Held meetings with every JRC member to gather information on M&E system within the Standard Operating Procedures (SOPs), Feedback and Complaint Mechanism, SMS system, etc.
- Consolidated comments, reviewed and developed M&E framework
- Finalized 1st draft of M&E framework and circulated to members for comments
- Comments received from JRC members, integrated and framework finalized
- Developed an M&E System Manual for the Consortium, including the framework
 - Developed Post Return Assessment Form
 - Developed Post Distribution Monitoring Form
- Training in Mogadishu of partners to be done

COUNTRY LEVEL ACTIVITIES

Excerpt: M&E System Manual

<p style="text-align: center;">Somalia Returns Consortium Monitoring & Evaluation System Manual Version 4 January 2013</p> <p style="text-align: right;">REACH <small>Informing more effective humanitarian action</small></p>		<p>TABLE OF CONTENTS</p> <p>Figures..... 2</p> <p>Acronyms..... 3</p> <p>1. Objective of the Manual..... 4</p> <p>2. Background..... 4</p> <p> 2.1 Rationale..... 4</p> <p> 2.2 Target Audience..... 4</p> <p> 2.3 Document Structure..... 4</p> <p>3. Data Collection..... 5</p> <p> 3.1 Timeline of Data Collection..... 6</p> <p> 3.2 Sources of Data..... 6</p> <p> 3.3 Data Collection Methodologies..... 7</p> <p> 3.3.1 Intention Survey..... 7</p> <p> 3.3.2 Beneficiary Registration Form..... 8</p> <p> 3.3.3 Distribution List and Cash Transfer Records..... 8</p> <p> 3.3.4 Post Return Monitoring..... 8</p> <p> 3.3.5 Post Distribution Monitoring (by third party)..... 10</p> <p> 3.3.6 Post Return Assessment (by third party)..... 12</p> <p> 3.3.7 Feedback and Complaint Mechanism..... 14</p> <p> 3.4 Training..... 15</p> <p> 3.5 Data Verification..... 15</p> <p>4. Data Entry..... 16</p> <p> 4.1 Interagency Database..... 16</p> <p> 4.2 Steps for Data Entry..... 16</p> <p> 4.3 Data Verification..... 16</p> <p>5. Data Analysis..... 17</p> <p>6. Data Sharing & Protection..... 18</p> <p>7. FAQs..... 18</p> <p>8. Annexes..... 19</p> <p>Tables</p> <p>Table 1: Specific Objectives & Corresponding Indicators..... 5</p> <p>Table 2: Tools and Sources of Data..... 6</p> <p>Table 3: Post Return Monitoring Frequency Matrix..... 9</p> <p>Table 4: Sample Size Examples..... 10</p> <p>Table 5: Sample Size Examples..... 12</p> <p>Figures</p> <p>Figure 1: Data Collection Timeline..... 6</p>
---	--	---

COUNTRY LEVEL ACTIVITIES

Activity 2. Design and develop an interagency data management online platform (based on field piloting of M&E system)

→ Link: <https://reach3.cern.ch/somalia/>

Somalia Return Consortium
Interagency MIS

User Name :

Password :

[Forgot Password?](#) [Register Now](#)

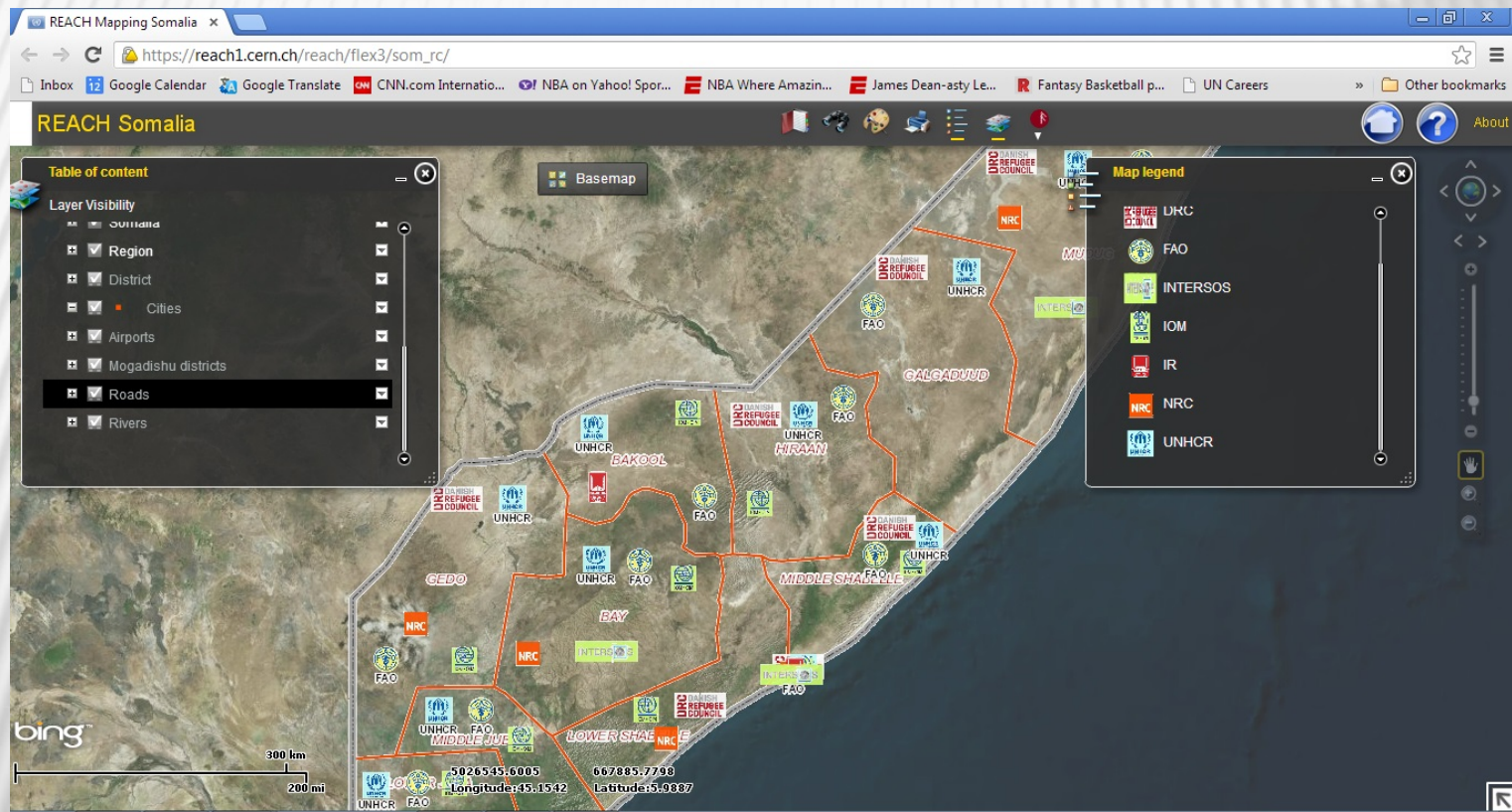
Developed by:

REACH Informing
more effective
humanitarian action

COUNTRY LEVEL ACTIVITIES

Activity 3. Setup of a webmap

→ Link: https://reach1.cern.ch/reach/flex3/som_rc/



Questions or comments?

Clay Westrope, IMPACT/Assessment Specialist, clay.westrope@impact-initiatives.org

Patrick Cantin, ACTED/Country Director, patrick.cantin@acted.org

Lam Huynh, ACTED/AME Manager, lam.huynh@acted.org

More information: <http://www.reach-initiative.org/>

REACH in Somalia: <http://www.reach-initiative.org/countries/somalia-2>