

Displacement Updates in North-West Syria

Some 2.7 million IDPs are living in north-west Syria, with more than 20,000 IDPs newly displaced in August 2020. The top three sub-district of arrival were Atareb, Dana and Afrin.

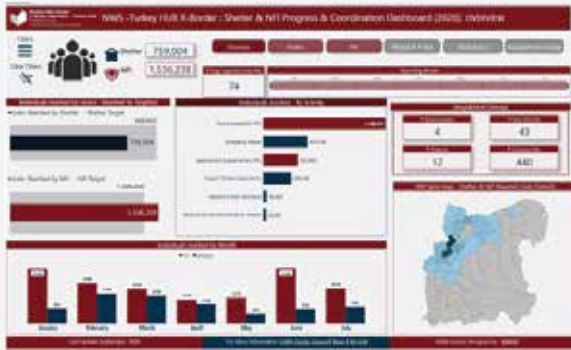
According to HNAP's Mobility and Needs Monitoring Factsheet, close to half of all the IDPs displaced in August are living in inadequate housing, including 43% living in emergency shelter, predominantly tents, and 5% living in sub-standard buildings, most of which are unfinished buildings. Moreover, 44% of the IDPs displaced in August were obliged to pay rent while 15% were squatting.

Response

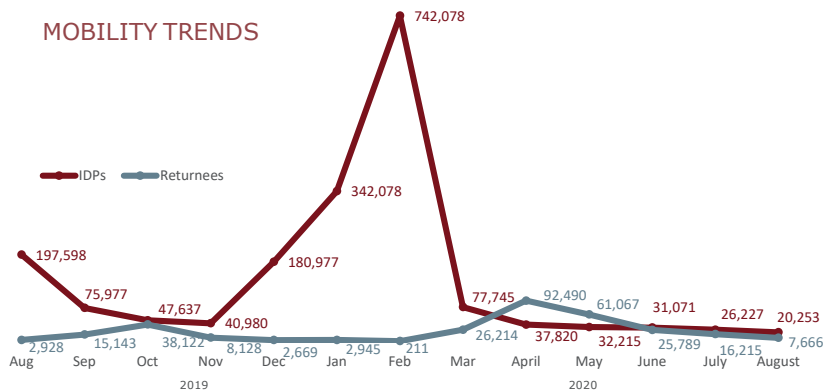
SNFI Cluster members continue to actively respond to the needs of the newly displaced population as well as protracted IDPs north-west Syria.

In August, more than 118,000 individuals received NFI assistance in the form of NFI kits, kitchen sets, mattresses, jerry cans, carpets, solar lamps, tarpaulin and blankets. Shelter needs of over 100,000 people were addressed during August with activities like the provision of emergency shelter, infrastructure rehabilitation, shelter rehabilitation and transitional shelters, and seasonal shelter assistance.

The Cluster Coordination Team, with the support of IMAP, have improved and updated the SNFI dashboard. The dashboard provides an overview of the SNFI Cluster's activities, and information can be filtered to select details on activities, time, and location.

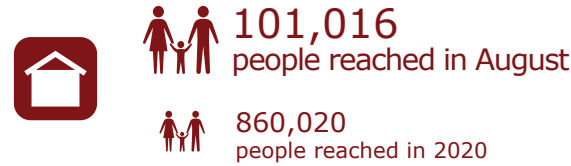


MOBILITY TRENDS



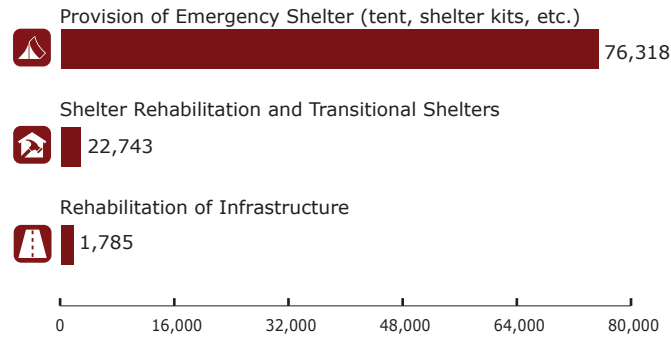
Graph: Number of IDPs in NWS and returnees from within Syria for the past 12 months, as reported by HNAP in August 2020.

Shelter Response

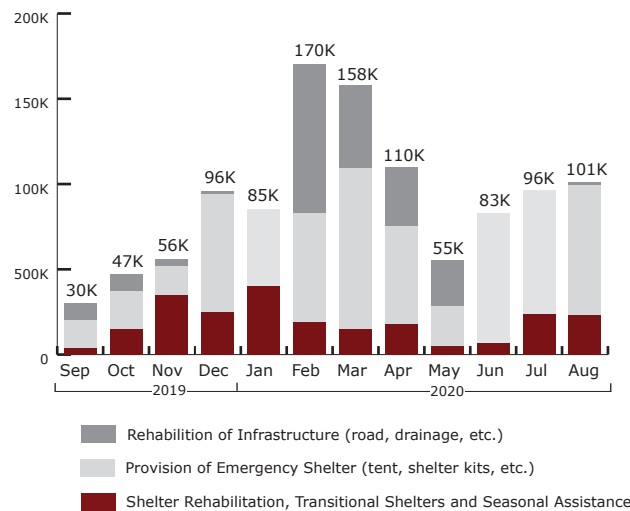


860,020 people were reached in 2020 with rehabilitation of infrastructure (199,450 people); provision of emergency shelter (507,496 people); shelter rehabilitation and transitional shelters (122,544 people); seasonal assistance (30,530 people).

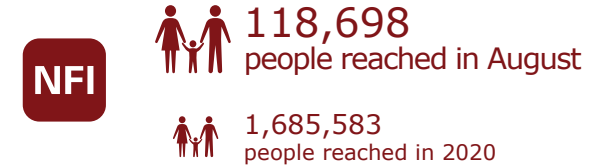
People reached in August by sub-activity



People reached in the past 12 months by activity

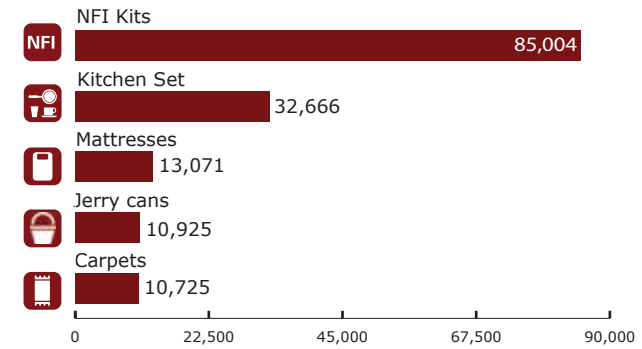


NFI Response



1,685,583 people were reached in 2020 with seasonal and/or supplementary NFI assistance (341,976 people), and core NFI distributions (1,343,607 people).

People reached in August by item (top 5 items)



People reached in the past 12 months by activity

