

Progress Report






Activity	T-shelter using recycled-salvaged-materials and self-recovery
Duration of Report	21th – 31st October 2009
Duration of activity	40 days (19th October – 30th November 2009)
Implemented by	<p>PADMA Indonesia Office: Jln. Palbatu IV No. 12A-B, Menteng Dalam, Tebet, Jakarta Selatan, Indonesia – 12870 Tel/Fax: +62-21-83706152 Email: padmaindo@yahoo.com Website: www.padmaindo.org</p> <p>Contact Person in location: Yovianus Toni Sakera Program Manager/Coordinator of Disaster Response Jln Raya Sicincin – Bukit Tinggi KM 50, Simpang Balai Kamih – Kepala Hilalang – Kecamatan 2x11 Enam Lingkung, Padang Pariaman Mobile: +62-852-83763888 Email: padmaindo.disaster@yahoo.com</p>
Background	<ol style="list-style-type: none"> 1. After the big earthquake of 7.9SR in West Sumatra, hundreds of thousand houses and building were damaged and could not be used anymore 2. 30-70% of the old building materials from the damaged-houses can be re-used if we make a well-treatment to the damaged-houses 3. From the existing materials, we can build temporary house from the size of 30m2 until 70m2 upon the quantity of the material, where they can stay until the next 1 year when the new permanent house is constructed. 4. T-shelter is built using self-recovery mechanism with recycled-salvaged-materials from damaged houses.
Objectives	<ol style="list-style-type: none"> 1. To help the affected-communities in starting their life after the severe disaster by cleaning their damaged-houses and by sorting the useful materials from the ruins 2. To build the temporary shelter using the existing materials from damaged-houses by self-recovery mechanism.
Location	Korong Sigaung, Nagari (Village) Sungai Asam Sub-District 2x11 Enam Lingkung, District Padang Pariaman
Target	100 T-shelters
Total achievement until 31st October 2009 (11 days)	Total houses cleaned/recycled: 35 houses Total temporary shelter built by self-recovery mechanism: 41 units

No of staff and volunteers	Staff : 5 persons Local volunteers: 30 persons
Short information about PADMA Indonesia	PADMA Indonesia was established in 15 Januari 2002 and registered in Department of Home Affairs of Indonesia as a National NGO Since 2005, PADMA has taken part both in post-disaster and pre-disaster measures in Aceh tsunami, Nias earthquake, Yogyakarta earthquake, Jakarta flood, Morowali-Sulawesi landslide, West Timor flood and drought, Talaud-Sulawesi Earthquake and Palu-Sulawesi DRR : <ol style="list-style-type: none"> 1) Emergency: food, non-food, shelter and psychosocial 2) Rehabilitation and reconstruction: houses, schools, water supply, livelihood 3) Disaster risk reduction: to facilitate the community to design the community action plan for disaster risk reduction More information about could be provided as requested
Request	PADMA Indonesia plans to expand the working area if there is new agency/donor supporting.

Sicincin, Pariaman, 26th October 2009

Yovianus Toni Sakera
Project Coordinator

	<p>To assess the building, we use the assessment result from the government.</p>	
	<p>The building assessor give the briefing before we fall down the destroyed houses</p>	
	<p>We use the existing resource in the location like rope</p>	

	<p>Or long and strong wood</p>	
	<p>The zinc-roof was taken off carefully to re-use</p>	
	<p>Also the timber</p>	

And window/door frame



The bricks



And the stone



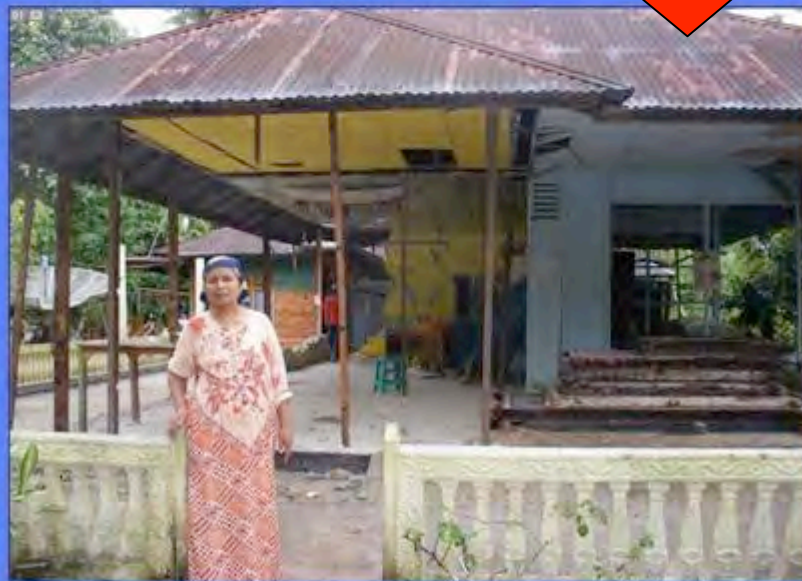
The result of our work:







re-use the whole roof



PADMA Indonesia

Location: Korong Sigaung, Nagari Sungai Asam, Sub-district: 2X11 Enam Lingsung,
District Padang Pariaman

Contact: Yovianus Toni Sakera

0852 837 63 888

padmaindo.disaster@yahoo.com