

What is a Cluster?

- Which vulnerable group in particular was the cluster established for?
- What is a cluster?
- When was cluster approach first used?
- Can a cluster have more than one lead agency at Global level?

Quiz

- At times no clear delineation of responsibilities in response to disasters
- Poor coordination
- Large gaps, especially in relation to IDPs
- In 2005, reform of humanitarian response system led to a 'cluster approach'

Origin of Cluster

- Clusters are groups of humanitarian organizations, both UN and non-UN, in each of the main sectors of humanitarian action
- Cluster Approach was applied for the first time following the 2005 earthquake in Pakistan
- Today the Cluster Approach is used in more than 20 countries to deliver humanitarian assistance

What is a Cluster?

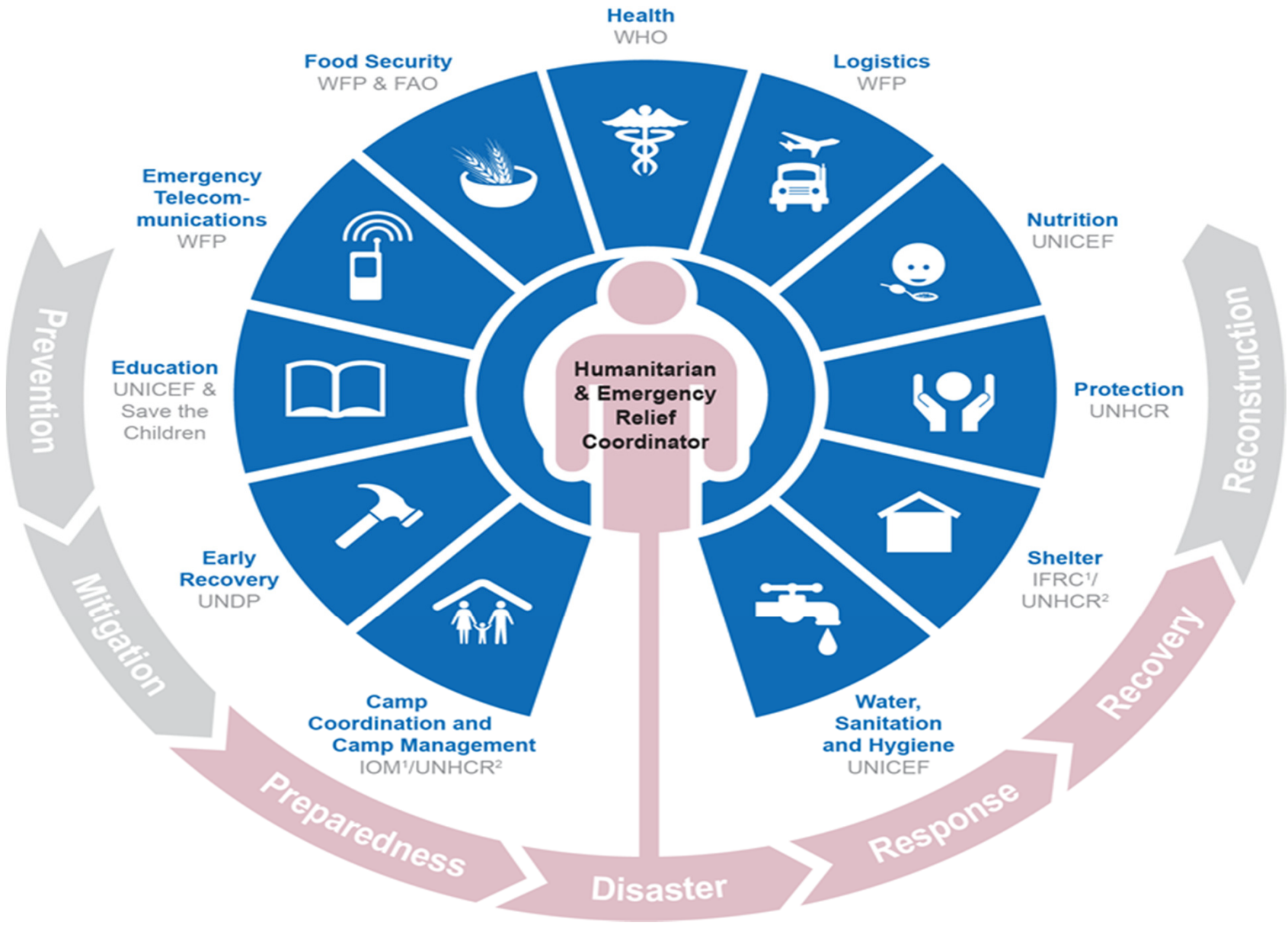
- Cluster is a means to ensure:
 - Leadership and accountability
 - Predictable and effective response during emergencies

- Each Cluster led by an international agency with expertise in that area
- The agency is accountable to the Emergency Relief Coordinator at OCHA
- Cluster lead agency responsible for chairing and coordinating work of relevant global cluster

What is a Cluster – Global level

Area of activity	Lead agency
Protection	UNHCR
Shelter (conflict)	UNHCR
Shelter (natural disaster)	IFRC
Health	WHO
Water, sanitation, hygiene	UNICEF
Nutrition	UNICEF
Early Recovery	UNDP

Clusters and leads



- Cluster at global level responsible for:
 - Standard and policy-setting through development of standards and policies, identification of best practices
 - Building response capacity through training, establishing surge capacity and rosters
 - Providing operational support, through timely assessments, long term planning, advocacy, resource mobilization

Role of Cluster at Global Level



The Global Protection Cluster (GPC) coordinates and provides global level inter-agency policy advice and guidance on the implementation of the cluster approach to Protection Clusters in the field.

Global Protection Cluster



Global
ShelterCluster.org
Coordinating Humanitarian
Shelter

- The Global Shelter Cluster (GSC) seeks to assist the different clusters at national level as well as other non refugee related coordination mechanisms by providing services in a timely, predictable and coordinated manner in order to improve the humanitarian effort.
- The GSC aims to reinforce preparedness and technical capabilities in order to respond to humanitarian crises through coordination at regional, national and global levels.

Global Shelter Cluster

- Cluster lead accountable to the HC/RC
- Ensure effective inter-agency coordination through chairing and coordinating work of cluster
- Carry out joint needs assessments and analyses
- Contingency planning and preparedness
- Coordinating with national authorities
- Filling gaps in area of humanitarian activity

Responsibility at National level

- Provide leadership and facilitate the processes that will ensure well-coordinated, coherent, and effective responses take place in geographic area of responsibility
- Strengthen and improve the Cluster structure at field-level through greater engagement with relevant stakeholders and the National Secretariat
- Set up a system of field focal points in areas not covered by the Cluster to ensure that a rapid response information system is in place
- In coordination with the Secretariat, identify priority regions where field focal points will be needed

Responsibility at Field Level

Questions/Comments?

The responsibility of the GPC is to engage in three key areas:

1. Standards and policy setting
2. Building response capacity
3. Operational support

Global Protection Cluster

The GPC provides a number of tools and resources designed to support Protection Cluster Coordinators in the field.

GPC Tools & Resources

Tool #1

Model Terms of Reference for Field Protection Cluster Coordinators

- *Outlines in detail the responsibilities of a Field Protection Cluster Coordinator*
- *Accessible at:
http://www.globalprotectioncluster.org/_assets/files/tools_and_guidance/Model_TOR_Field_Protection_Cluster_Coordinator_2014_EN.pdf*

GPC Tools & Resources

Tool #2

Protection Cluster Strategy Template

- *Provides a detailed framework for the establishment of a Protection Cluster strategy*
- *Accessible at:
http://www.globalprotectioncluster.org/_assets/files/tools_and_guidance/PC_Strategy_Templat_2012_EN.pdf*

GPC Tools & Resources

Tool #3

Guidance Note for Consolidated Appeals for Protection Clusters

- *Provides detailed guidance on how to manage the annual CAP, with references to previous successful appeals*
- *Accessible at:
http://www.globalprotectioncluster.org/_assets/files/tools_and_guidance/GPC%20Toolbox/CAP_checklist_for_PC_2013_EN.pdf*

GPC Tools & Resources

Tool #4

GPC Help Desk

- *The GPC Help Desk facilitates field access to expert advice and rapid deployment capacity on the full range of protection and technical issues, from GBV to monitoring and evaluation.*
- *A response from the Help Desk can be expected within 72 hours.*
- *This service is not available to individuals or individual agencies. Requests must come from the Protection Cluster at the country level. Requests will then be channeled to the most appropriate organizations and experts.*
- *Requests should be sent either by using the [Help Desk Request Form](#) or via email to helpdesk@globalprotectioncluster.org*

GPC Tools & Resources

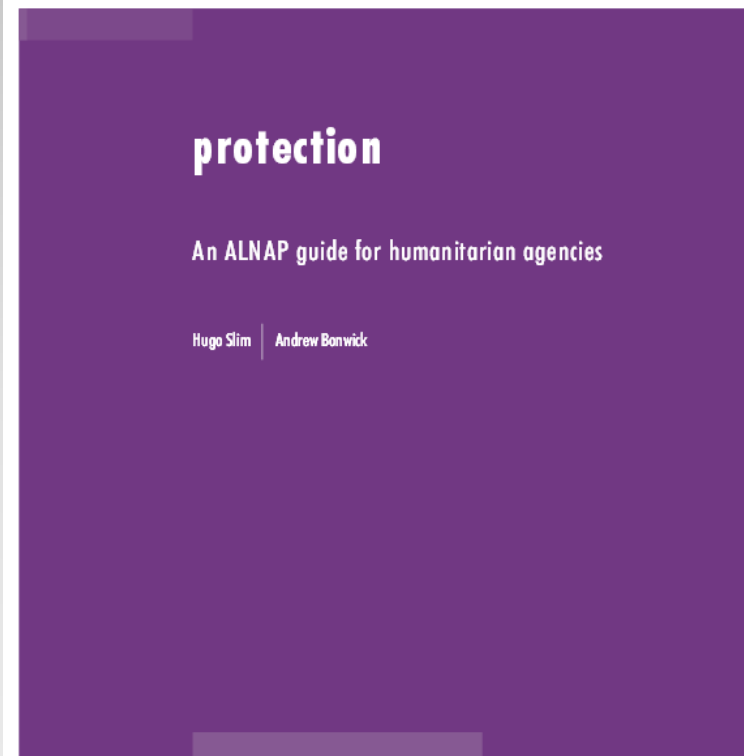
Tool #5

“Protection: the ANLAP Guide for Humanitarian Agencies”

- *Offers a framework for understanding protection in terms of responsibility and action*
- *Contains a practical guide to protection-focused programming, from assessment and programme design to implementation and monitoring and evaluation*

Accessible at:

http://www.globalprotectioncluster.org/_assets/files/tools_and_guidance/ALNAP_Guide_Humanitarian_Agencies_2005_EN.pdf



GPC Tools & Resources

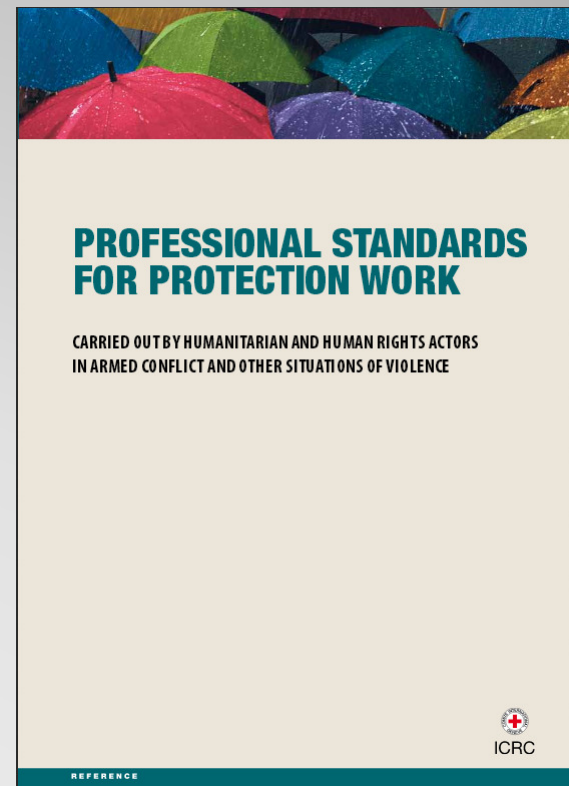
Tool #6

ICRC's "Professional Standards for Protection Work"

- *Explains the overarching protection principles and architecture*
- *Explains the legal framework of protection and how to build on it*

Accessible at:

http://www.globalprotectioncluster.org/_assets/files/tools_and_guidance/ICRC_Professional_Standards_2009_EN.pdf



GPC Tools & Resources

Other GPC tools and resources include:

- Guidance from the Inter-Agency Standing Committee (IASC)
 - <http://www.globalprotectioncluster.org/en/tools-and-guidance/guidance-from-inter-agency-standing-committee.html>
- Resources on specific protection themes
 - GBV: <http://www.globalprotectioncluster.org/en/tools-and-guidance/essential-protection-guidance-and-tools/gender-based-violence-essential-guidance-and-tools.html>
 - Child protection: <http://cpwg.net/tools-resources/>
- Training repository
 - Provides training materials on AoRs, internal displacement, legal frameworks, humanitarian reform, conducting effective meetings, presentation skills, and more
 - <http://www.globalprotectioncluster.org/en/field-support/training-and-learning/gpc-training-repository.html>

GPC Tools & Resources

The Somalia Protection Cluster is comprised of around 130 active member agencies implementing projects related to protection and human rights across Somalia. It aims to assist these actors in meeting the protection needs of civilians in a coherent, coordinated, accountable and comprehensive manner.

Somalia Protection Cluster

Cluster Structure

- The National Protection Cluster for Somalia and the Strategic Advisory Group are based in Nairobi and chaired by the Cluster Coordinator and Co-Coordinator.
- The Cluster has two active technical working groups (TWGs) that deal specifically with child protection and gender-based violence (GBV).
- There are also nine regional Protection Clusters and Working Groups at the field level. These are based in Mogadishu, Dollow, Dhobley, Baidoa, North Galkayo, South Galkayo, Garowe, Bossaso and Hargeisa.

Somalia Protection Cluster

Tool #1

Somalia Protection Cluster Terms of Reference

- *Identifies the function and objectives of the Cluster*
- *Defines membership and participation requirements*
- *Identifies Cluster Chair and Co-Chair Responsibilities*
- *Explains the structure/hierarchy of the Cluster*

Accessible at: XXXXXXXXXXXXXXXXXXXX

Somalia PC Tools & Resources

Tool #2

Somalia PC Technical Committee Terms of Reference

- *Identifies the purpose of the Technical Committee*
- *Explains membership and composition*
- *Outlines meeting frequency and structure*

Accessible at: XXXXXXXXXXXXXXXXXXXX

Somalia PC Tools & Resources