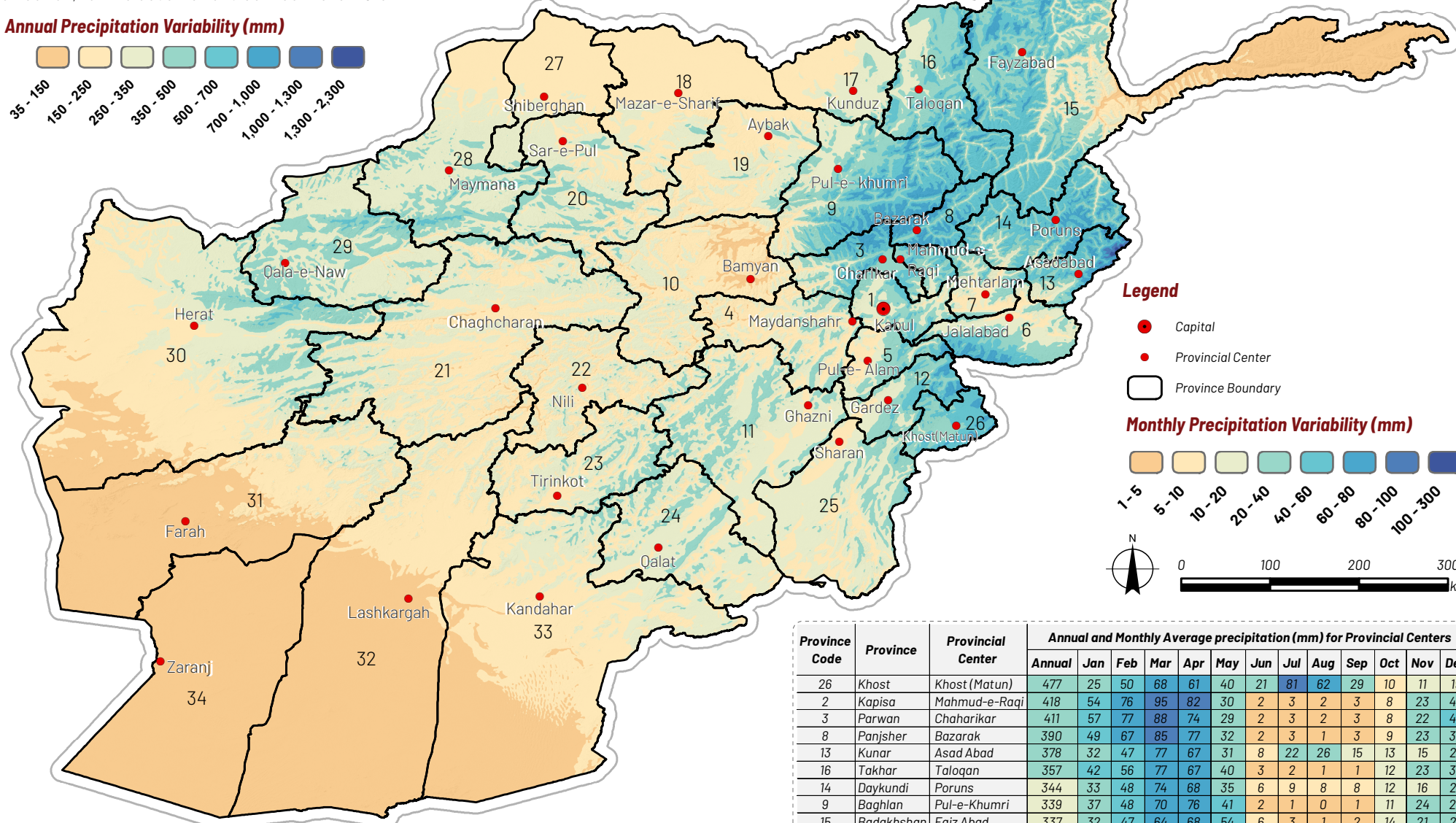
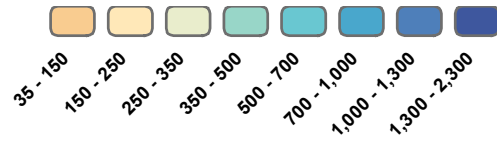


This map shows the average annual total precipitation in Afghanistan as well as the average precipitation per month in mm. The data originates from the CHELSA high resolution (30 arc sec/1km) climate data set for the earth land surface areas (Swiss Federal Institute for Forest, Snow, and Landscape Research WSL). The data is based on, statistical downscaling of the ERA interim global circulation model (from ECMWF) with a GPCC bias correction, for the observations between 1979-2013.

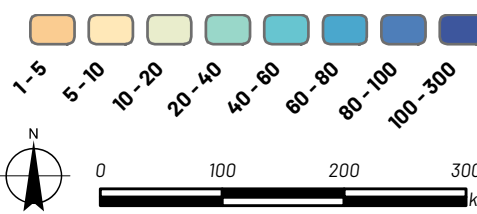
Annual Precipitation Variability (mm)



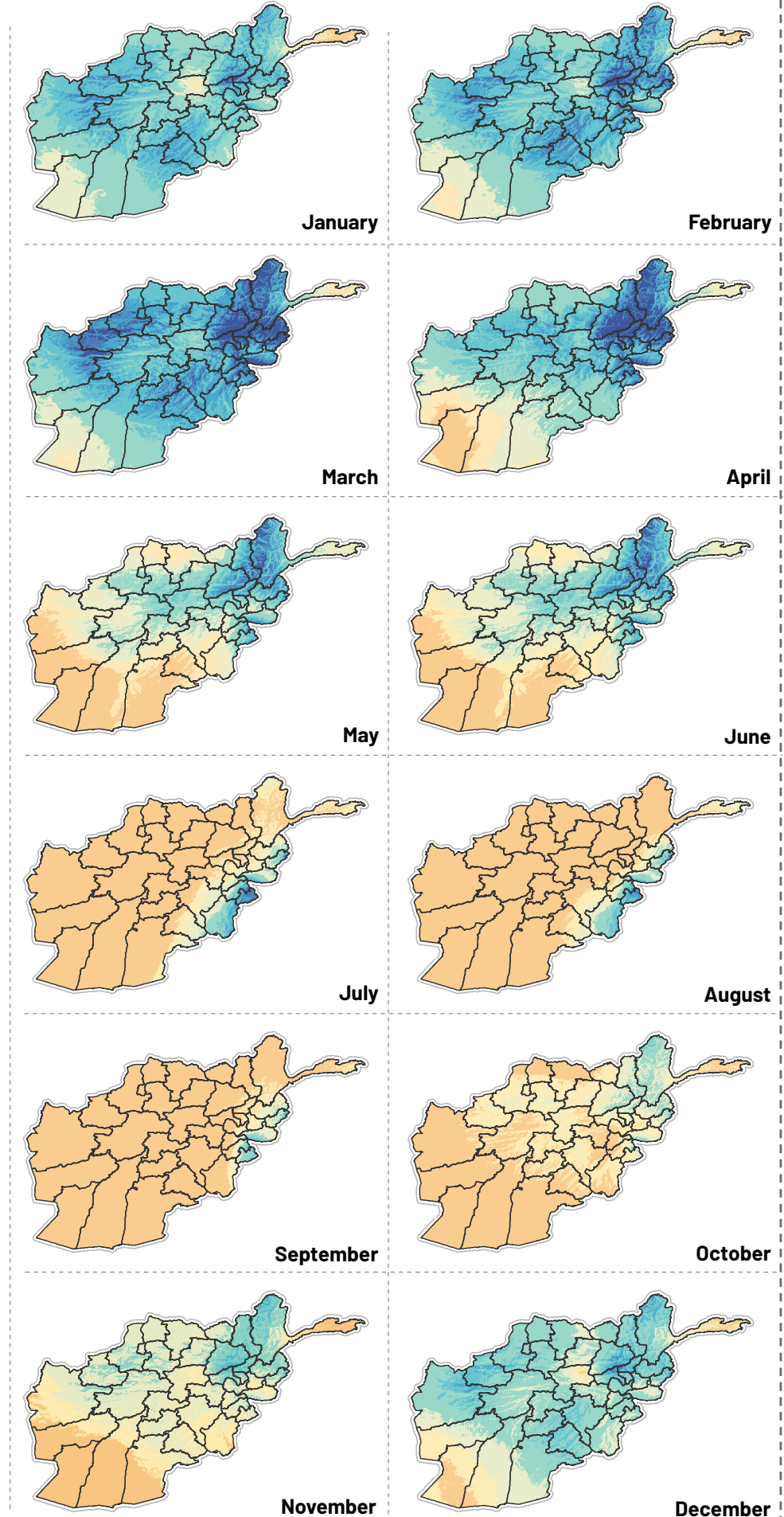
Legend

- Capital
- Provincial Center
- Province Boundary

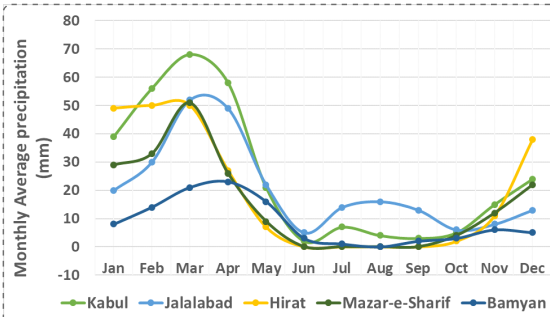
Monthly Precipitation Variability (mm)



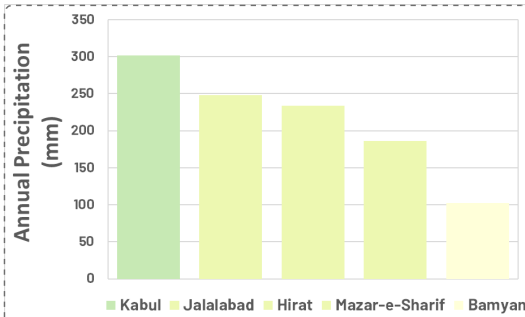
Precipitation Average per Month (mm)



Major Cities Monthly Average Precipitation



Major Cities Annual Average Precipitation



Province Code	Province	Provincial Center	Annual and Monthly Average precipitation (mm) for Provincial Centers												
			Annual	Jan	Feb	Mar	Apr	May	Jun	Jul	Aug	Sep	Oct	Nov	Dec
26	Khost	Khost (Matun)	477	25	50	68	61	40	21	81	62	29	10	11	19
2	Kapisa	Mahmud-e-Raqi	418	54	76	95	82	30	2	3	2	3	8	23	40
3	Parwan	Chaharikar	411	57	77	88	74	29	2	3	2	3	8	22	46
8	Panjsher	Bazarak	390	49	67	85	77	32	2	3	1	3	9	23	39
13	Kunar	Asad Abad	378	32	47	77	67	31	8	22	26	15	13	15	25
16	Takhar	Taloqan	357	42	56	77	67	40	3	2	1	1	12	23	33
14	Daykundi	Poruns	344	33	48	74	68	35	6	9	8	8	12	16	27
9	Baghlan	Pul-e-Khumri	339	37	48	70	76	41	2	1	0	1	11	24	28
15	Badakhshan	Faiz Abad	337	32	47	64	68	54	6	3	1	2	14	21	25
29	Badghis	Qala-e-naw	310	51	60	82	40	12	0	0	0	1	6	16	42
1	Kabul	Kabul	302	39	56	68	58	21	2	7	4	3	5	15	24
28	Faryab	Maymana	300	45	50	76	46	20	1	0	0	0	8	19	35
17	Kunduz	Kunduz	297	42	52	72	48	23	0	1	0	0	8	21	30
12	Paktya	Gardez	291	31	52	62	54	16	5	19	12	3	4	11	22
24	Zabul	Qalat	262	58	64	59	19	3	0	5	4	0	3	10	37
6	Nangarhar	Jalalabad	248	20	30	52	49	22	5	14	16	13	6	8	13
27	Jawzjan	Shiberghan	241	44	43	61	28	11	0	0	0	0	7	15	32
4	Wardak	Maydan Shahr	240	33	46	56	45	15	1	5	3	1	3	12	20
7	Laghman	Mehtarlam	239	25	35	52	50	18	3	7	8	9	5	9	18
20	Sar-e-Pul	Sar-e-pul	238	40	41	59	31	15	0	0	0	0	9	14	29
30	Hirat	Herat	234	49	50	50	27	7	0	0	0	0	2	11	31
11	Ghazni	Ghazni	232	33	45	53	36	10	1	12	7	0	4	10	28
23	Uruzgan	Tirin Kot	213	42	51	54	17	7	0	1	0	0	4	11	26
33	Kandahar	Kandahar	212	48	47	54	20	5	0	2	0	0	2	8	26
5	Lagar	Pul-e-Alam	203	27	38	42	39	13	2	9	5	1	2	9	16
25	Paktika	Sharan	201	27	39	45	25	7	2	17	12	1	4	7	15
19	Samangan	Aybak	194	24	30	47	38	19	0	0	0	0	6	13	17
18	Balkh	Mazar-e-Sharif	186	29	33	51	26	9	0	0	0	0	4	12	22
22	Nuristan	Nili	185	33	39	36	25	12	1	0	0	0	5	9	25
21	Ghor	Chaghcharan	169	32	28	34	29	12	1	0	0	0	3	11	19
32	Hilmand	Lashkar Gah	136	31	31	36	10	5	0	0	0	0	2	4	17
10	Bamyan	Bamyan	102	8	14	21	23	16	3	1	0	2	3	6	5
31	Farah	Farah	96	24	22	27	7	2	0	0	0	0	1	3	10
34	Nimroz	Zaranj	48	15	10	13	3	0	0	0	0	0	1	1	5

Datum/projection: WGS84/Geographic
Data Sources: CHELSA, AGCHO
Date Created: 20/July/2020

Disclaimer: iMMAP Afghanistan is funded by the U.S. Agency for International Development (USAID). The boundaries, names, and designations used on this map do not imply official endorsement or acceptance by iMMAP or USAID. All information displayed is the best available at the time this map was produced.
Feedback: afghanistan@immap.org