

## **Information Management Report**

### **1.- Top Line National**

2.- Agencies

3.- Districts vs Agencies

4.- West Area

5.- Central Area

6.- East Area

# National Figures

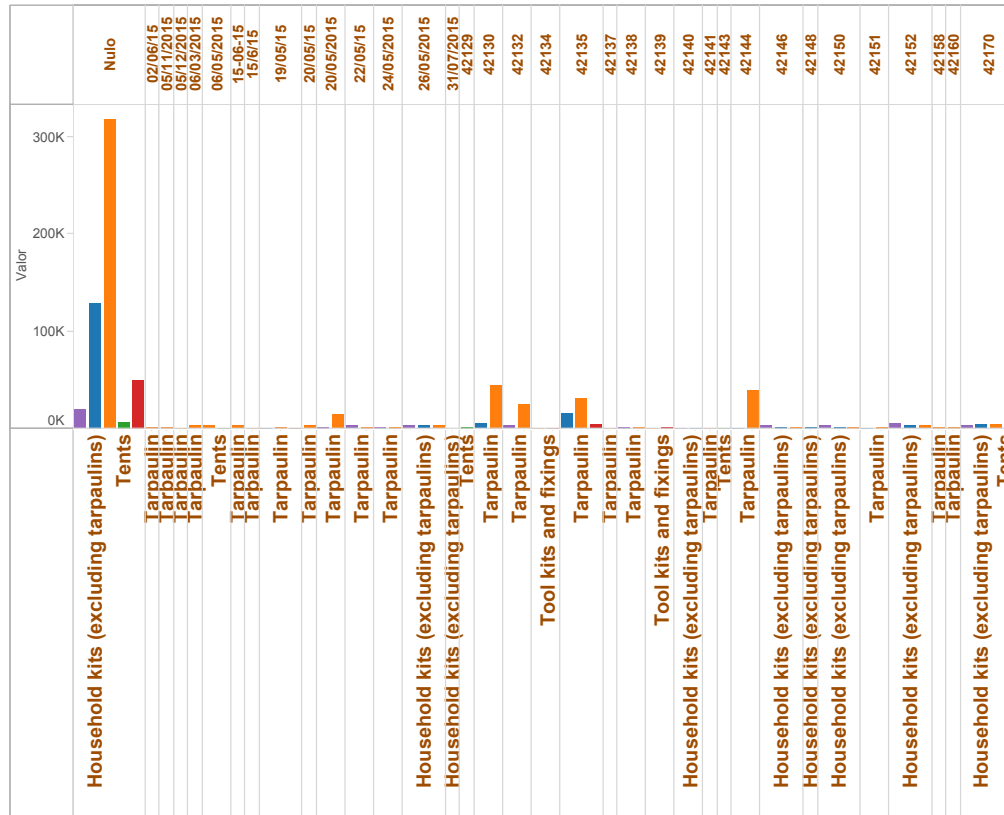
## National Summary

Status	Item				
	Blankets	Household kits (e..	Tarpaulin	Tents	Tool kits and fixin..
Completed distributions	43.206	34.158	192.094	9.157	808
In pipeline (procurement/on..	21.735	123.186	411.777	4.192	45.990
In-Country Stock/ Ongoing ..	22.540	11.839	83.144	212	533
Planned (funded)	69	26.981	8.676	3.597	9.020
Planned (subject to funding)			5.950		1.579
<b>Total general</b>	<b>87.550</b>	<b>196.164</b>	<b>701.641</b>	<b>17.158</b>	<b>57.930</b>

### Item

■ Blankets
 ■ Household kits (ex..
 ■ Tarpaulin
 ■ Tents
 ■ Tool kits and fixings

## Planned distributions by date



## Planned distributions by date

Comp Date	Blankets	Household kit..	Tarpaulin	Tents	Tool kits and ..
Nulo	19.235	128.812	317.453	5.976	50.328
02/06/15			1.000		
05/11/2015			1.486		
05/12/2015			178		
06/03/2015			2.400		
06/05/2015			3.176	20	
15-06-15			3.000		
15/6/15			2		
19/05/15		450	900		225
20/05/15			2.000		
20/05/2015	1.200		14.632		
22/05/15	2.590		1.295		
24/05/2015	1.800		900		
26/05/2015	3.100	1.950	1.950		
31/07/2015					
42129				700	
42130		5.000	45.000		
42132	2.000		23.820		
42134			200		200
42135		15.000	31.000		3.750
42137			100		
42138	1.600		800		
42139			500		1.040
42140	69	169			
42141			442		
42143				5	
42144		600	39.610		
42146	2.400	1.200	1.200		
42148			900		

Take away messages and limitations:

# District vs Item & Status

District	Item / Status																									
	Blankets				Household kits (excluding tarp..)				Tarpaulin					Tents					Tool kits and fixings							
	Completed distributions	In pipeline ( procurement/ onroute)	In-Country Stock/ Ongoing distributions	Planned (funded)	Completed distributions	In pipeline ( procurement/ onroute)	In-Country Stock/ Ongoing distributions	Planned (funded)	Nulo	Completed distributions	In pipeline ( procurement/ onroute)	In-Country Stock/ Ongoing distributions	Planned (funded)	Planned (subject to funding)	Completed distributions	In pipeline ( procurement/ onroute)	In-Country Stock/ Ongoing distributions	Planned (funded)	Planned (subject to funding)	Completed distributions	In pipeline ( procurement/ onroute)	In-Country Stock/ Ongoing distributions	Planned (funded)	Planned (subject to funding)		
Baglung	200					50				1.152	250	1.928		5.950	65											
Banke											100															
Bara										22	100															
Bhaktapur	710				1.500	2.000				6.155	12.000				147										2.000	
Bhojpur						100				160	1.000														100	
Chitawan	100					28.100				953	33.200														3.850	
Dang						5				2.001	100															
Dhading	5.905	13.965	2.590		6.777	41.805	1.090			16.356	68.965	12.175	436		100	1.325		500							3.000	
Dhankuta										1.355	200															
Dhanusha	1.355										100															
Dolakha	4.378		6.600		1.718	8.000	3.300			11.002	78.270	4.456													3.000	
Gorkha	5.322		1.600		783	4.100		140		23.425	18.110	11.830			5.979	197									4.100	
Gulmi	30					275	50			91	300														50	
Ilam										6	100															
Jajarkot											100															
Jhapa											100															
Kabhrepalanchok	1.350				3	4.000				7.546	15.000	2.700				298									468	
Kalikot											2.100															
Kaski	940					750				1.831	200															
Kathmandu	3.052			69	5.097	3.000		169	2	11.075	15.000	766			422		19								3.000	
Khotang	479					100				2.395	1.000														100	
Lalitpur	35					370	2.000			6.016	9.724	644	800		251										2.000	
Lamjung						5.653	100			3.817	1.200														100	
Makawanpur	373					2.000				3.363	5.000														2.000	
Morang										129	100															
Mustang	15									1.082	50.100															
Myagdi	110									1.106																
Nawalparasi	150					50				397	473	178													30	
Nuwakot	11.111	4.770			6.293	7.035	1.486			6.470	16.385	3.196			576	1.300	53								50	
Okhaldhunga	1.522					316	1.800			2.880	6.600														4.000	
Palpa						27	50			304	300				203										1.800	
Panchthar	14					14				183	200														50	
Parbat	300					100				580	400														100	
Parsa										11																
Pyuthan											100															
Ramechhap	950					1.500				1.743	5.100				75										1.500	
Rasuwa	920					3.085	4.000	888		2.012	12.625	1.888			16										1.800	
Rautahat											100															
Rolpa											100															
Rukum											100															
Rupandehi											100															
Salyan											100															
Sindhui	736		9.250			500	1.800	4.625	9.568	2.320	4.600	4.625	4.874				2.097								1.800	
Sindhupalchok	3.149	3.000	2.500			929	11.146	450		63.094	42.575	26.524	1.566		1.020		140								60	
Siraha											100				3											6.040
Solukhumbu						100				1.233	1.400				1	50									533	
Sunsari											100														4.300	
Surkhet											100															
Syangja						50				936	600														300	
Tanahun						50				1.227	600														250	
Taplejung						4					400														300	
TBD								17.244		1.260	5.000	12.234	1.000		1			1.000							50	
Terhathum											200														50	
Udayapur						59	100			6.406	1.000														100	
<b>Total general</b>	<b>43.206</b>	<b>21.735</b>	<b>22.540</b>	<b>69</b>	<b>34.158</b>	<b>123.186</b>	<b>11.839</b>	<b>26.981</b>	<b>142</b>	<b>192.094</b>	<b>411.777</b>	<b>83.144</b>	<b>8.676</b>	<b>5.950</b>	<b>9.157</b>	<b>4.192</b>	<b>212</b>	<b>3.597</b>	<b>808</b>	<b>45.990</b>	<b>533</b>	<b>9.020</b>	<b>1.579</b>	<b>1.579</b>		

Take away messages and limitations:

# Agency vs Item & Status

Agency	Item / Status																							
	Blankets				Household kits (excluding tarp..)				Tarpaulin					Tents				Tool kits and fixings						
	Completed distributions	In pipeline ( procurement/ onroute)	In-Country Stock/ Ongoing distributions	Planned (funded)	Completed distributions	In pipeline ( procurement/ onroute)	In-Country Stock/ Ongoing distributions	Planned (funded)	Nulo	Completed distributions	In pipeline ( procurement/ onroute)	In-Country Stock/ Ongoing distributions	Planned (funded)	Planned (subject to funding)	Completed distributions	In pipeline ( procurement/ onroute)	In-Country Stock/ Ongoing distributions	Planned (funded)	Planned (subject to funding)	Completed distributions	In pipeline ( procurement/ onroute)	In-Country Stock/ Ongoing distributions	Planned (funded)	Planned (subject to funding)
AAR Japan			2.590								1.295													
ACTED									1.058															
ActionAid Nepal											1.000												5.800	
ADRA									1.600		1.928		5.950		65					1.000				
Al-Khair Foundatio..																	12							
Arbeiter-Samariter...											2.000		1.000											
Asal Chimekee Nep..								40	1.411															
Association for Inte..																								
AWO International ..	150	3.000								1.934	3.000									30				
CARE					1.009	3.000				3.070							5					225		
CARE-IOM						450				2.200	900													
Caritas Nepal					4.673	4.196			2	4.064	2.996													
CECI										866		5.109												
Cesvi												800												
Christian Aid										2.090														
Concern Worldwide	5.194		15.850		2.597		7.925			2.597		21.642												
CORDAID-Caritas N..																								
CRS-Caritas						60.000				3.768	64.000					1.325					3.750			
DAN Chruch					4.500						2.500													
DCWC / Namaste N..										354														
FNCCI										4.000	10.000						259							
Global Communities													2											
GOAL					864	150	888			864	150	888												
Good Neighbors Int..	4.992									6.832							100							
Handicap Internatio..	200				500	1.300				200	650				500	1.300								
HELP										500	500									60	1.040			
HELVETAS Swiss I..										8.424		8.922												
Himalayan Disaster ..	1.137									6.902														
International Nepal ..	4.084		1.600							1.342		800												
Intersos																								
IOM						5.000					320						20							
IOM-DFID-ACTED											66.900						600							
IOM-USAID-ACTED										1.114														
Islamic Relief										2.000							700							
Lumanti										239														
Lutheran World Fed..										5.389	3.079	644												
Lutheran World Reli..										740	2.590													
MedAir-MissionEast										5.108	7.550		1.564											
Mennonite Central ..					566					566														
Mercy corps					480				100	44														
MNMC										2.512	197					5.886	197							
Nepal Red Cross	11.704				2.584	40.000				42.634	162.200				1.854						40.000			
OM nepal										346	2.020													
Oxfam					872					1.919	50.000													
People in Need										4.138	9.370													
Plan International	1.209									12.915		12.000												
Relief International					14					201							1							3.220
RRN										2.245														
Samaritan's Purse	9.250	4.770			3.306	2.385	1.486			1.764	2.385	3.196				16								
Save the children										31.802														
SDC - Humanitarian..										2.175											718			
Secours Islamique ..						350																		
Seeds											1.000											200		
ShelterBox											200													
SOLIDARITES INTE..										1.441		1.027	436		384		195	1.500				308		
Terre des hommes (...)												3.000												
The Salvation Army										1.740														
UNHCR										399	795													
UNICEF										2.000														
United Mission to N..	1.985	13.965			1.985	6.805	1.090			7.291														
We World Onlus	3.301		500	69	2.592			169		900														1.579
Welthungerhilfe			2.000								8.500	7.000												
World Vision Intern..						7.616		26.812		4.411			4.874				2.097							
<b>Total general</b>	<b>43.206</b>	<b>21.735</b>	<b>22.540</b>	<b>69</b>	<b>34.158</b>	<b>123.186</b>	<b>11.839</b>	<b>26.981</b>	<b>142</b>	<b>192.094</b>	<b>411.777</b>	<b>83.144</b>	<b>8.676</b>	<b>5.950</b>	<b>9.157</b>	<b>4.192</b>	<b>212</b>	<b>3.597</b>		<b>808</b>	<b>45.990</b>	<b>533</b>	<b>9.020</b>	<b>1.579</b>

Take away messages and limitations: