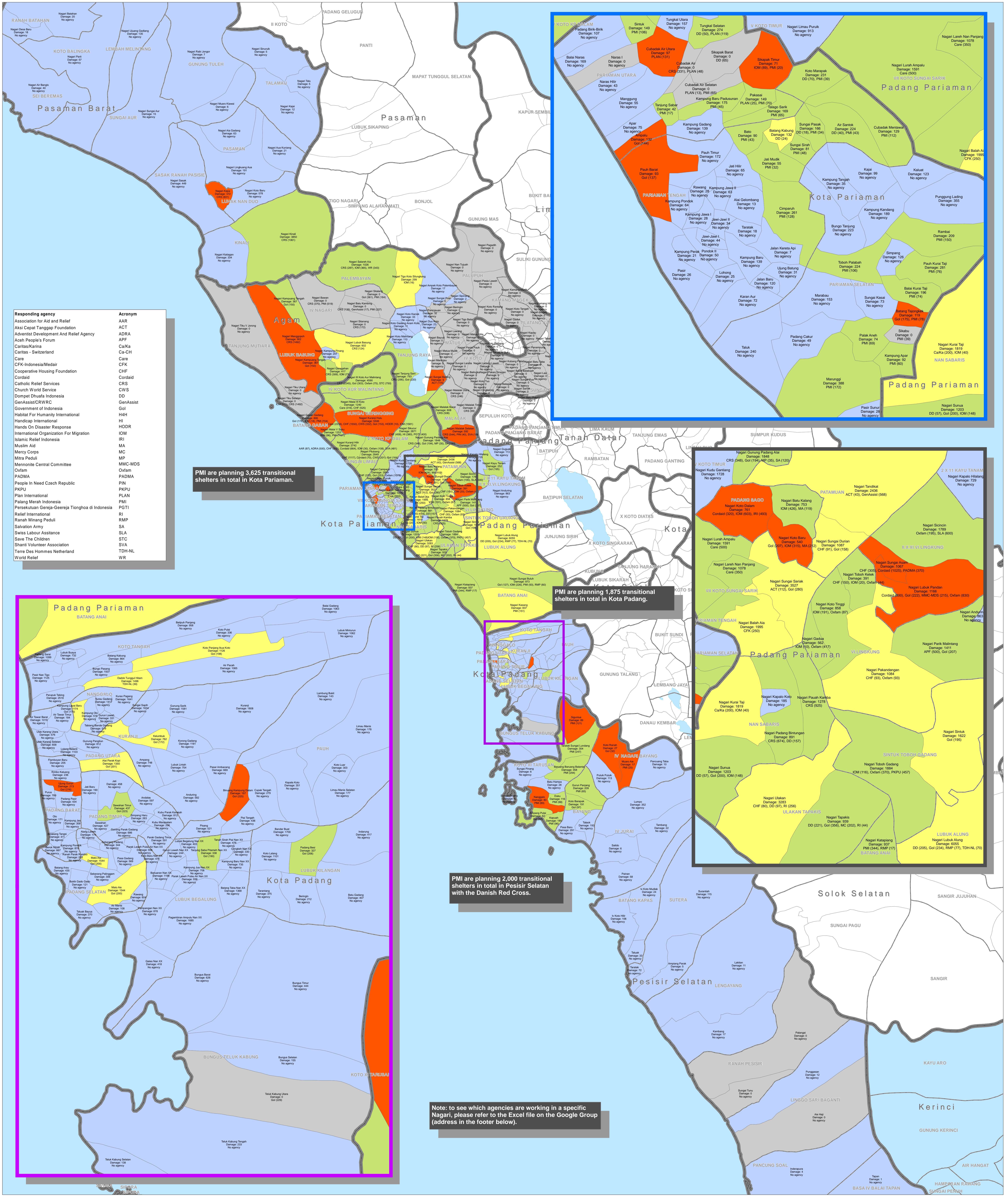


WEST SUMATRA - Shelter Cluster - Coverage of damaged houses (severe and moderate) by Nagari

14 April 2010



Responding agency	Acronym
Association for Aid and Relief	AAR
Aksi Cepat Tanggap Foundation	ACT
Adventist Development and Relief Agency	ADRA
Aceh People's Forum	APF
Caritas/Karita	CaKa
Caritas - Switzerland	Ca-CH
Care	Care
CFK-Indonesia/Medair	CFK
Cooperative Housing Foundation	CHF
Consid	Consid
Catholic Relief Services	CRS
Church World Service	CWS
Dompot Dhuafa Indonesia	DD
GenAssist/CRWRC	GenAssist
Government of Indonesia	GoI
Habitat For Humanity International	HHH
Handicap International	HI
Hands On Disaster Response	HODR
International Organization For Migration	IOM
Islamic Relief Indonesia	IRI
Muslim Aid	MA
Mercy Corps	MC
Mitra Peduli	MIP
Norwegian Central Committee	OCM
Oxfam	Oxfam
PADMA	PADMA
People In Need Czech Republic	PIN
PKPU	PKPU
Plan International	PLAN
Palang Merah Indonesia	PMI
Persekutuan Gereja-Gereja Tionghoa di Indonesia	PGTI
Relief International	RI
Ransah Minang Peduli	RMP
Salvation Army	SA
Swiss Labour Assistance	SLA
Save The Children	STC
Shant Volunteer Association	SVA
Terre Des Hommes Netherland	TDHNL
World Relief	WR

PMI are planning 3,625 transitional shelters in total in Kota Pariaman.

PMI are planning 1,875 transitional shelters in total in Kota Padang.

PMI are planning 2,000 transitional shelters in total in Pesisir Selatan with the Danish Red Cross.

Note: to see which agencies are working in a specific Nagari, please refer to the Excel file on the Google Group (address in the footer below).



Legend

- District
- Sub-district
- Nagari
- Lake

Coverage of damaged houses (Damage = severe + moderate damage)

- No agency present
- 1% to 25%
- 25% to 100%
- Greater than 100%
- No damage data available

File name: 1000414_shelter_coverage_A0.pdf
 Projection/Datum: GCS: WGS 84
 Web Resources: <http://groups.google.com/group/SUM09>

0 5 10 Km

1:281,892

This update includes data up to 13 April 2010. Data is collected by the Indonesia Shelter Cluster, UN Agencies and NGOs field staff and is subject to change. Maps will be updated regularly.
 Cartography: Indonesia Shelter Cluster with OCHA
 Map Produced: 14 April 2010
 Base Data and Statistics: Indonesia Shelter Cluster, BAPPEDA West Sumatra, OCHA

For questions and comments, please visit:
<http://www.sumataraearthquake.org> <http://groups.google.com/group/sum09>

Disclaimers:
 Damage figures were obtained from BAPPEDA West Sumatra. Damage data does not take into account self-recovery efforts by the affected communities.
 The designations employed and the presentation of material on this map do not imply the expression of any opinion whatsoever on the part of the Secretariat of the United Nations concerning the legal status of any country, territory, city or area or of its

