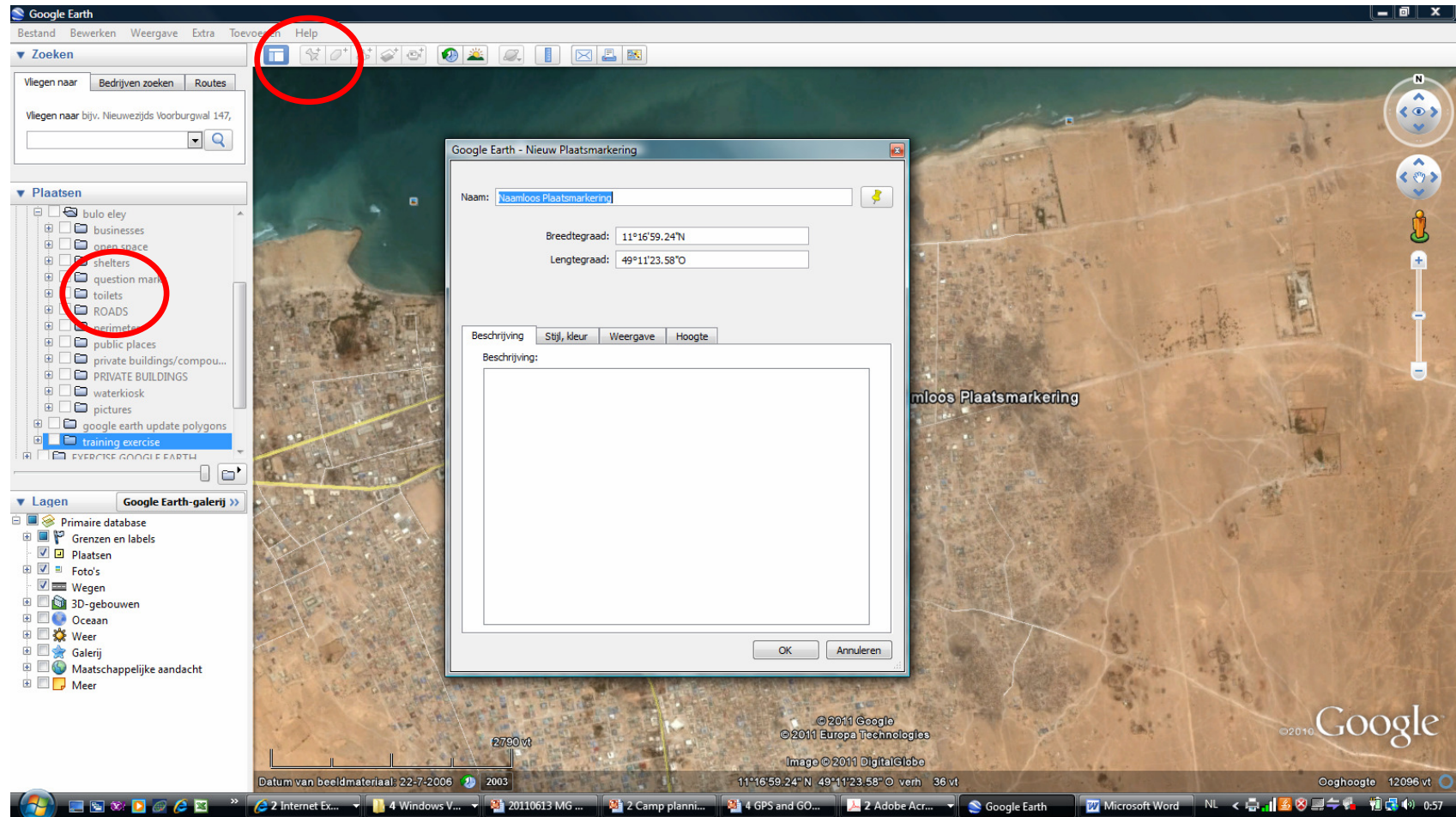


WAYPOINTS

ENTERING NEW WAYPOINT: DO NOT FORGET TO PUT IT IN THE RIGHT FOLDER...



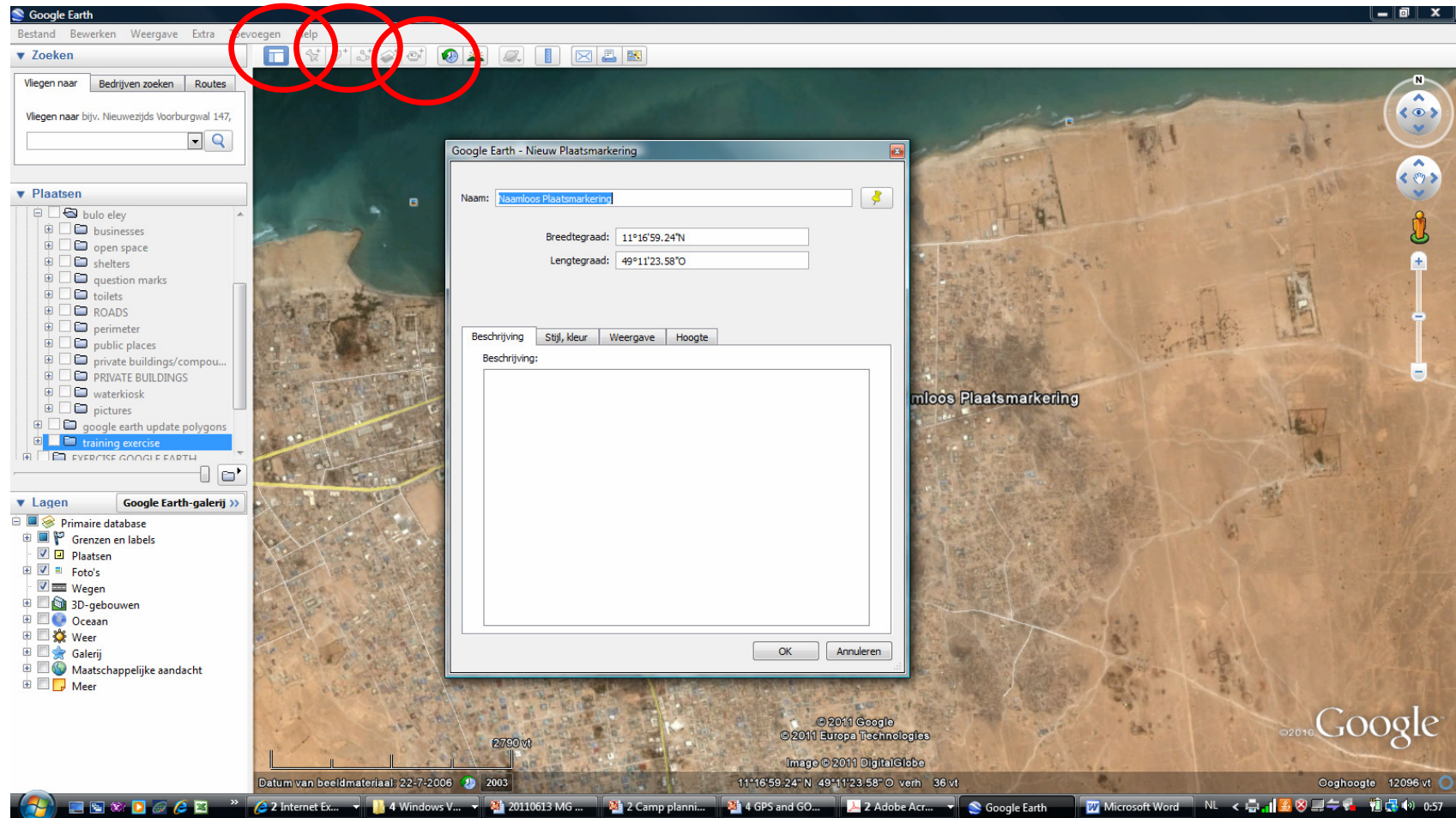
WAYPOINTS

CHANGING THE LOGO...

The image displays two screenshots of the Google Earth interface. The left screenshot shows the 'Nieuw Plaatsmarkering' (New Place Marker) dialog box. The 'Naam' (Name) field contains 'Naamloos Plaatsmarkering'. A red circle highlights the 'Logo' icon in the top right corner of the dialog box. The right screenshot shows the 'Pictogram' (Pictogram) selection dialog box, which is open over the map. This dialog box displays a grid of various icons, including a yellow pushpin, which is the default logo for a waypoint. The 'Aangepast pictogram toevoegen...' (Add custom pictogram...) button is visible at the bottom of the dialog box. The background of both screenshots is a satellite view of a coastal area with a yellow line indicating a path or route.

WAYPOINTS

ENTERING POLYGONES AND DISTANCES...



INSERTING THE GPS

INSERTING DATA FROM GPS: REMEMBER ALL FILES COME INTO THE TEMPORARY FOLDER AND NEED TO BE FILED...

