

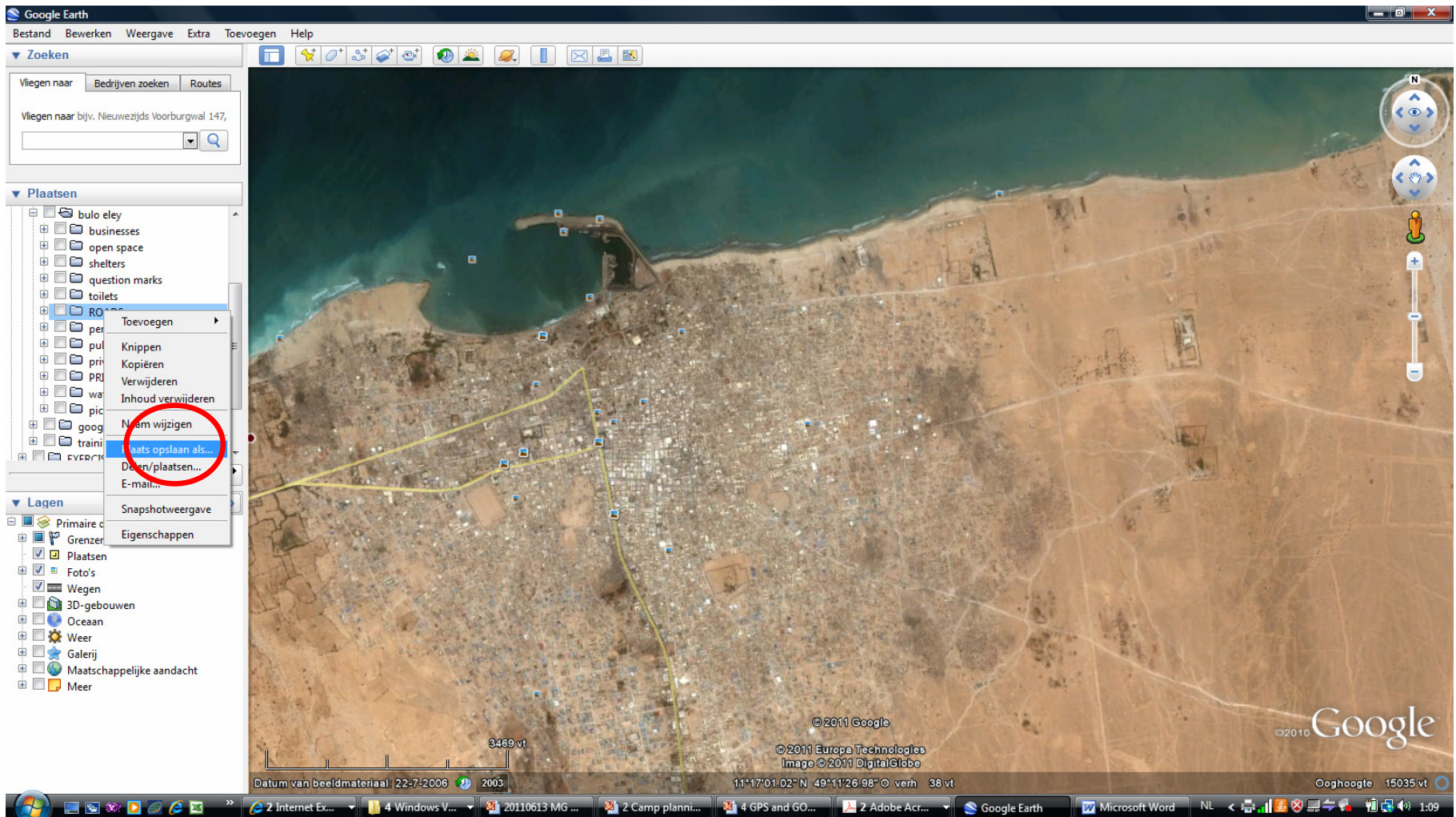
INSERTING LAYERS

WITH SITE PLANNING IT COULD BE THAT ALREADY A SITE PLAN EXISTS AS A SCAN,... THIS CAN BE INSERTED

The image shows a composite of three screenshots from the Google Earth desktop application. The top-left screenshot shows the 'Toevoegen' (Add) menu with 'Beeldoverlay' (Image Overlay) selected. The top-right screenshot shows the 'Google Earth - Nieuw Beeldoverlay' dialog box with the 'Bladeren...' (Browse...) button highlighted. The bottom screenshot shows the same dialog box with the 'OK' button highlighted. The background of all screenshots is a satellite view of a coastal area with a yellow line indicating a path or boundary.

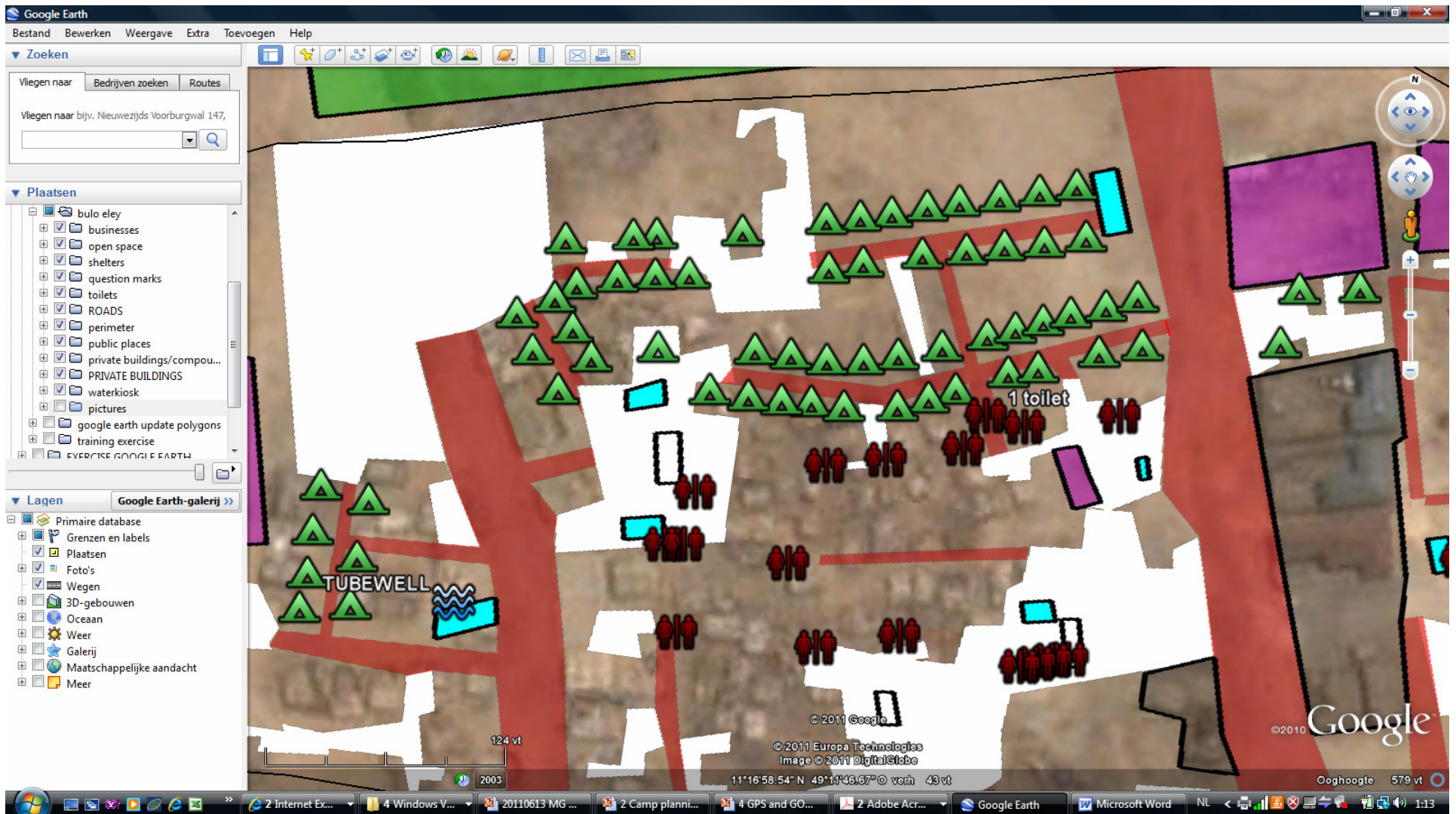
WAYPOINTS

SAVING FILES TO SHARE AND MAKING BACK UPS...



SITE PLANNING TOOL

MAKING A SITE PLAN THROUGH GPS...



EXERCISE

EXERCISE: a file will be sent to all of you and a plan will need to be made...

Waypoint/track	What	Dimension of Road	Nr of shelters right	Nr of shelter left	Comments
001	PICTURE 104				picture main street
002	start road	2m	8 shelters	4 shelters	small street'
003	road LEFT	2m		3 shelters	
004_007	free space in camp				
008	end road				
009-025	free space in camp		communal area for washing		
026	start road	1,5m	3 shelters	4 shelters	road ends on big public space
027-030	free space in camp				
031	end road	1,5m			
032	PICTURE 105		picture public space		
033	PICTURE 106		picture street		