
Integrated Response



**GLOBAL
SHELTER CLUSTER**

Coordinating Humanitarian Shelter and Settlements

GSC MEETING 2024

Integrated Response

Moderators

Carolina Cordero-Scales, IOM

Mohamed Hilmi, InterAction

Presenters

1. The wider impact from rental support to displaced persons in urban contexts - case studies from **Colombia, Jordan, and Ukraine** (Blumont, Juan Pablo Franco Jiménez, Country Director Colombia);
2. Applying the Settlement Approach and Community Action Planning to Post-Disaster reconstruction (IOM **Pakistan**, Jago Boase, Shelter & Settlements and WASH Programme Manager);
3. Supporting displaced persons in urban areas with integrated approaches – **multiple countries** (UN-Habitat, Jia Cong Ang, Programme Management Officer);
4. An Interagency Approach to integrating health and social protection in **Somalia** (IOM, Amun Osman, Urban Development Specialist, Danwaadag Consortium);
5. Shelter as entry point for cross-sectoral and intercluster cooperation in **Yemen** (Yemen Shelter Cluster, Martha Kow Donkor);

“MORE THAN JUST A ROOF”: INTEGRATED SUPPORT FOR IDPs IN COLOMBIA

Juan Pablo Franco Jiménez, Country Director Colombia, Blumont



**GLOBAL
SHELTER CLUSTER**
Coordinating Humanitarian Shelter and Settlements





INTEGRATED RESPONSE

Closing Gaps - Colombia

Closing Gaps – Lifesaving Assistance and Protection for Recently Displaced Persons

- Funded by USAID’s Bureau for Humanitarian Assistance.
- Integrated interventions in 5 sectors: **food assistance, WASH, shelter and settlements, protection, and HCIMA.**
- Only for persons recently displaced by armed conflict.
- **Five receptor cities** with the largest number of IDP arrivals and least capacity.
- Rental support to 720 IDPs—the most vulnerable female-headed families as one piece of integrated interventions.

Why the integrated approach?

- Recently displaced persons need interventions across all sectors.
- Layered interventions have larger impact as they build on each other.
- IDPs are able to enhance their capacity and have sustained access to resources.



Impact from Rental Support

- Rental support is sustainable and reduces dependence on humanitarian assistance:
 - 6 months after the end of rental support, **71% of families** continue in adequate housing paying rent on their own—twice as likely as control group.
- Rental support puts families on a **path toward durable solutions**:
 - Safer, greater sense of belonging, and income multiplied by 2.5—but only 8% more income than control group.
- It's **peace of mind**, not money that triggers these results.



Challenges for Integrated Programming



- Funding is not available for all sectors.
- Not everyone uses the same sector categories
 - Donor vs. Government policy vs. people.
- Timing and sequencing of interventions.
- Need for new ways to measure success to understand how change takes place.



THANK YOU



**GLOBAL
SHELTER CLUSTER**

Coordinating Humanitarian Shelter and Settlements



IMPLEMENTING THE SETTLEMENT APPROACH IN PAKISTAN

Jago Boase, Shelter & Settlements and WASH Program Manager, IOM

EXISTING DEVELOPMENTAL NEEDS

Long-term developmental needs that pre-date the 2022 flooding:

- High levels of rural poverty and infant mortality
- Open defecation → malnutrition and stunting

~\$3bn is being invested to rebuild 2.5m pukka houses
(Sanitation is belatedly being added)

→ How can this funding can be used to achieve more than just houses?



ISSUES

What are the benefits beyond housing?

Environmental impact:

- Housing reconstruction will require over 20bn bricks
- 25% of Pakistan's annual brick production
- 13 megatons of CO₂

Slow progress:

- Delays opening bank accounts and paying installments
- Programme targets households, not communities
- Some households missing during initial assessment





IOM PILOT PROJECT

Integrated post-flood
reconstruction

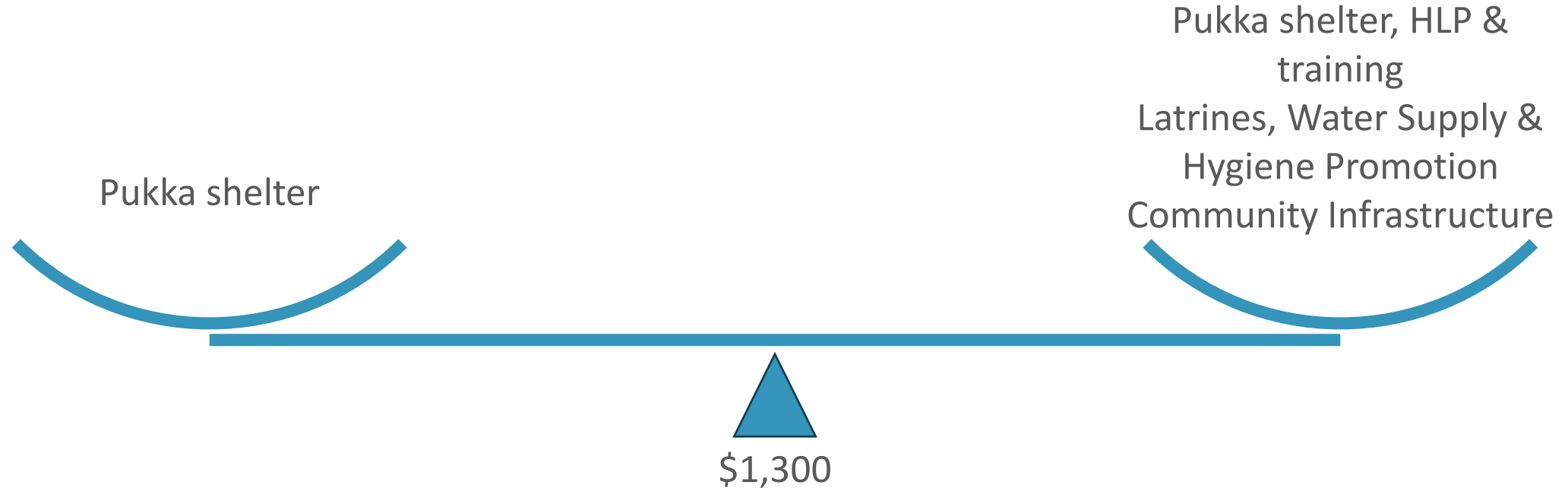
PROJECT OVERVIEW

- **Community Action Planning**
- **Cash for Shelter Reconstruction**, with technical training and construction of model shelters
- **HLP** support
- **Latrine and Water Supply** Construction
- Hygiene promotion
- Construction/rehabilitation of **Community Infrastructure** through Cash for Work

Total project cost = \$1,330 / household
(including staff, office & overheads)

This is the same as the construction cost
of a single shelter in the World-Bank
funded project

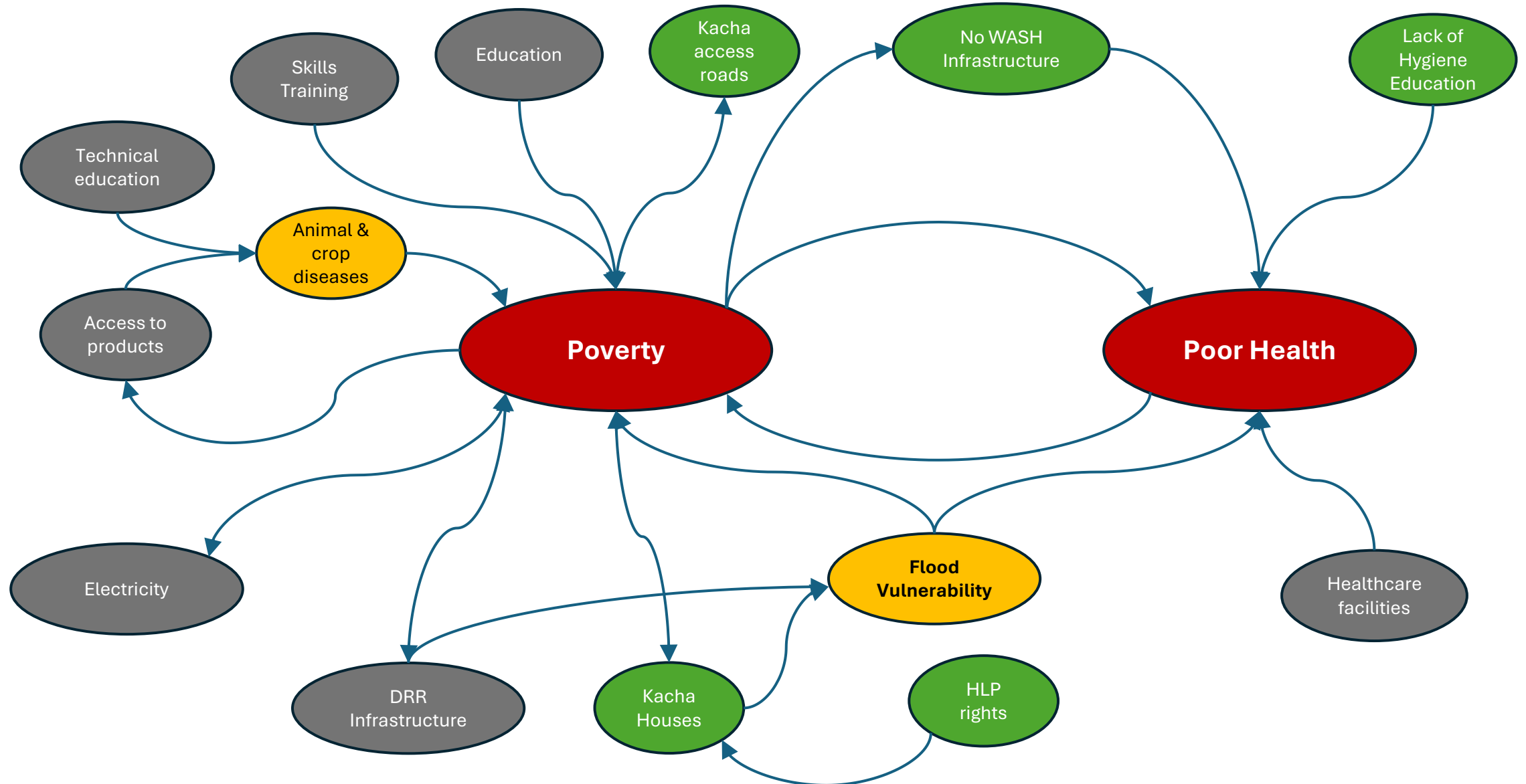
ACHIEVING MORE WITH LESS



How does this balance?

- **Vernacular, low-cost shelter designs that use 20-40% fewer bricks**
- Community was **asked to choose** between allocating additional money to shelter construction or community infrastructure
- Community infrastructure was implemented through CfW → reinvested by beneficiaries for shelter construction

THE PROBLEM TANGLE



KEY FINDINGS

Adopting a 'whole village' approach:

- Reassess needs of the whole community to include previously excluded households
- Cash support only released when the whole village reaches the milestone → households **support and pressure** each other
- **Bulk procurement** by the community to get lowest prices and reduce transport costs
- **Reduced logistical costs** for implementing agency



Faster construction

Stronger community

Lower costs for beneficiaries
(and implementing agency)

KEY FINDINGS

Flexible, multi-sector funding

- More effective use of funds
 - Beneficiaries chose to receive less cash for shelter in return for community infrastructure
 - Households with own resources could 'top up' IOM contribution
- Maximise beneficiary/community choice
 - Allow community control over funding allocations
 - Use Community Action Planning to identify projects
- Communities don't think in terms of Sectors
 - All issues are interlinked → Allow the community to decide how best to address interlinked challenges



THANK YOU!

Integrated Strategies for Sustainable Urban Solutions for Displaced Populations

Jia Cong Ang, Programme Management Officer, UN-Habitat



**GLOBAL
SHELTER CLUSTER**

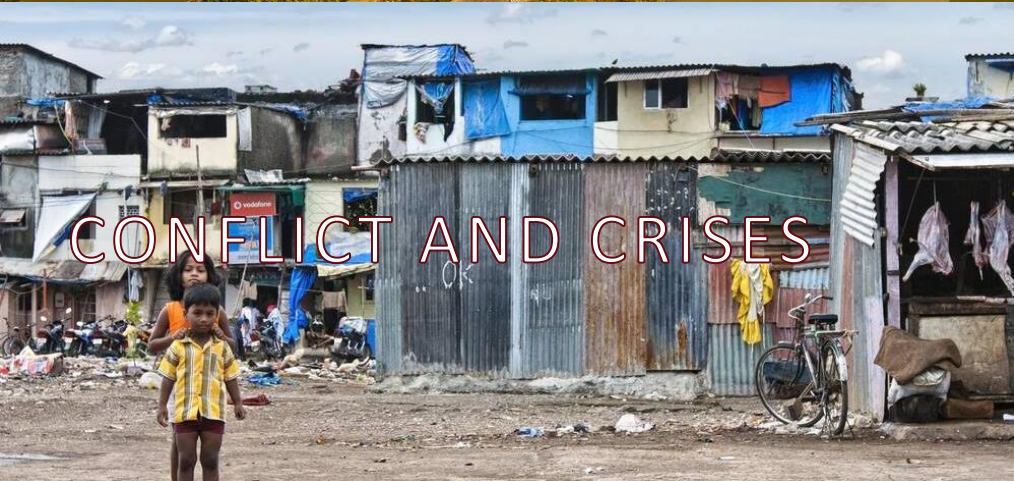
Coordinating Humanitarian Shelter and Settlements



UN-HABITAT



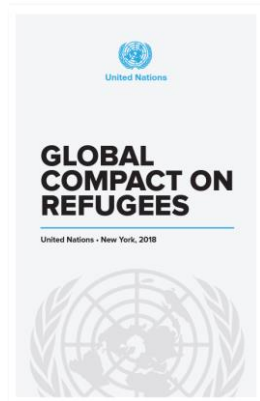
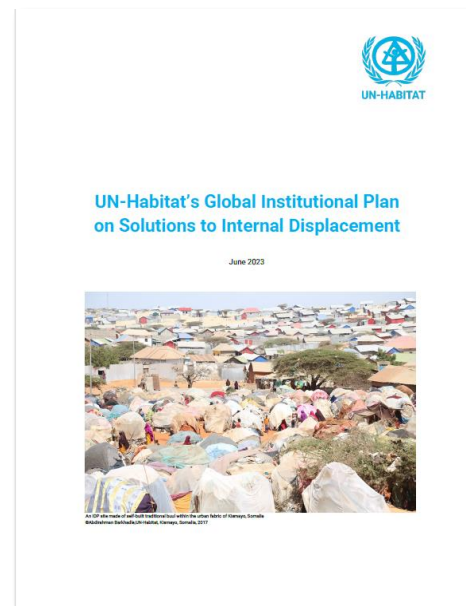
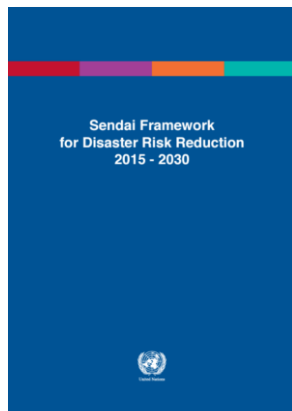
CLIMATE CHANGE



CONFLICT AND CRISES



RAPID URBANIZATION



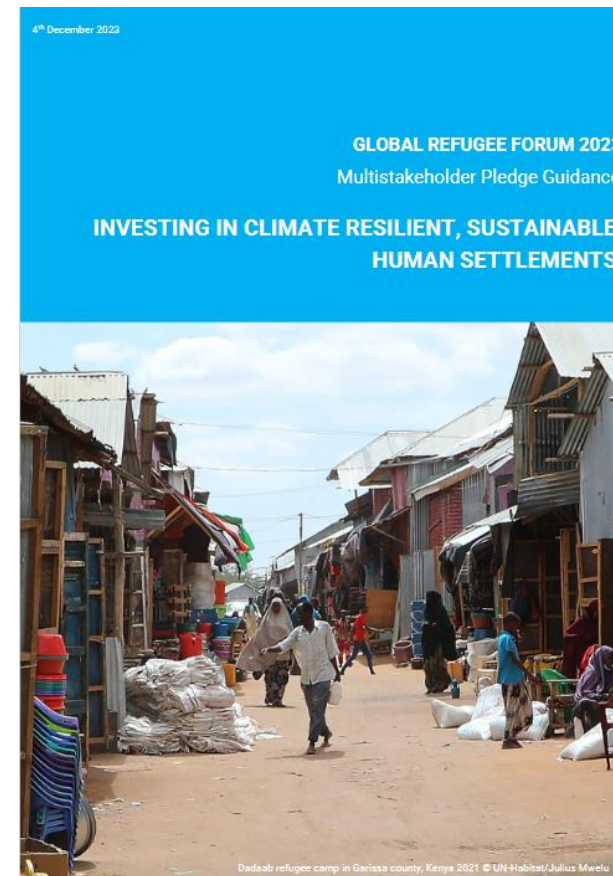
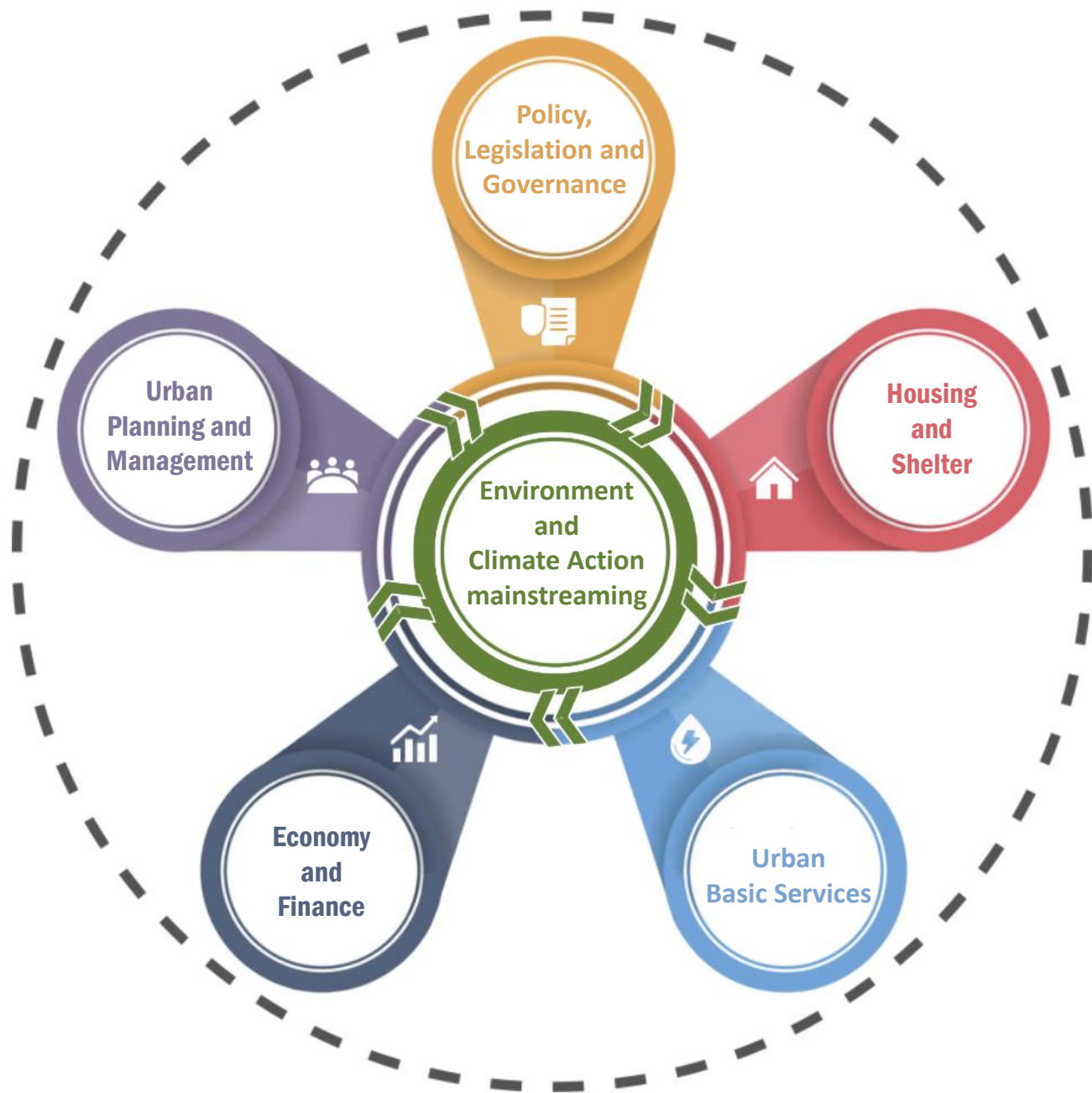
Effective **urban crisis** prevention and response

Enhanced **social integration** and inclusive communities

Improved **living standards** and inclusion of migrants, refugees and internally displaced persons

Enhanced **resilience** of the built environment and infrastructure





Spatial Analytics / Urban Profiling



Value Add

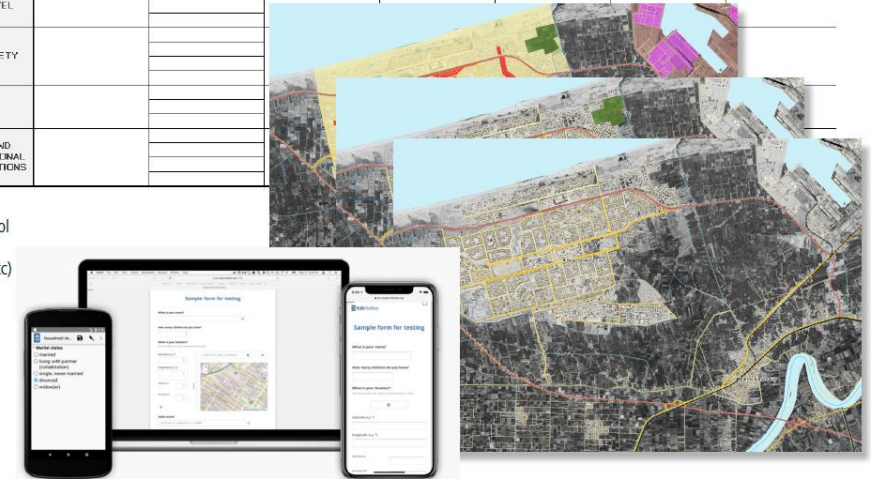
- Use a holistic approach through identifying and mapping all relevant stakeholders
- Improve coordination and collaboration across sectors
- Build efficiency by collecting and analyzing data collectively

Impact (Kakuma, Kenya)

- Established a common intersectoral understanding of the overall context
- Generated a combined database for stakeholder use and discussion
- Formed the basis for future stages

TYPE OF STAKEHOLDER	TYPE OF STAKEHOLDER	SUBCATEGORY / SECTOR / MINISTRY	STAKEHOLDER	MANDATE	RESOURCES	RELATIONSHIPS	ROLE DESCRIPTION FOR PHASE 2	WORKSHOP
Public sector	NATIONAL LEVEL	subcategory 1	stakeholder 1					
		subcategory 2	stakeholder 2					
	REGIONAL METROPOLITAN LEVEL							
	LOCAL LEVEL							
Civil Society	CIVIL SOCIETY							
Private Sector	PRIVATE SECTOR							
Donors and International Organizations	DONORS AND INTERNATIONAL ORGANIZATIONS							

- > Stakeholder mapping tool
- > Base maps
- > Surveys (kobotoolbox, etc)



Building Opportunities for Refugee and Host Community Integration and Self-reliance

Kenya, Kakuma-Kalobeyei & Dadaab



Visioning / Prioritizing / Financing



Value Add

- Ensure comprehensive participation and that needs identified can be targeted and addressed
- Develop a long-term roadmap/ vision to enhance sustainability and resilience of responses
- Formulate evidence-based recommendations for each actor/sector to avoid duplications
- Identify priority projects and investments for resource optimization and allocation

Impact (Douala, Cameroon)

- Ensured a fully participative vision creation process
- Formulated evidence-based recommendations, prioritized specific infrastructure projects across sectors
- Developed specific priority project brief/ investment card, and connected with potential financing entities

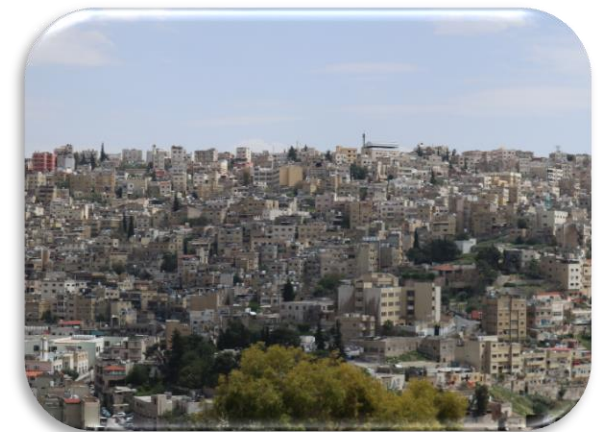


Projet	Temporalité					
	Année 0	Année 1	Année 2	Année 3	Année 4	Année 5
Construction de gouttières au niveau des servitudes						
Nettoyage de la rivière Kondi (carrefour ville-lycée de Nyal)						
Gestion de la création de drains pour éviter les inondations - pont blanc à la chaou - pont allemand						
ouverture des égouts du centre d'état civil Pont noir-Bongam bilongue-Vision confort						
Construction du drain sur la rivière Kambo (Bocoum, Guefar, Mbang-Pongo)						
Construction du drain sur la rivière Kambo (Bongam-Couefar, Mbang-Pongo)						
Gestion et création de canalisations, curage et installation						
Nettoyage du ravin						
Boisement de la Mangrove de Bokou						
Protection et valorisation des bas fonds						
Disposition des pistes suivantes : Station UCB-MRS sur 1 000 m Piste face à Asquinj jusqu'au boulevard Nord-Sud sur 1 50 m Piste Hysacam jusqu'à la source de la clinique de vie sur 300 m Piste de la société FAEM dans les blocs 3 et 4 sur 800m						
Construction de 05 points d'eau dans les différents blocs						
Éclairage public : besoin de 23 lampadaires (05 pour le bloc C, 10 pour les blocs A et B et 08 pour le drain) et de panneaux solaires						
Éclairage public : besoin de 23 lampadaires (05 pour le bloc C, 10 pour les blocs A et B et 08 pour le drain) et de panneaux solaires						
Éclairage routier avec panneaux solaires						
Éclairage public dans le quartier						
Provisionnement en eau potable						
Station, construction et équipement d'un centre de santé						
Station et construction d'un CSI						
Construction et équipement d'un CMA ou CSI						
Développement d'un centre social						



Urban Planning and Infrastructure in Migration Contexts

Cameroon (Douala), Egypt (Damietta) & Jordan (Amman and Irbid)



Connecting Normative to Operations



Value Add

- Use normative frameworks as guiding principles (keyword: evolving/updating)
- Promote best practices and lessons learned across sectors
- Policy to practice translation

Impact (Urban Planning Response in Post-Crisis Contexts; Designing for Displacement)

- Mainstreamed sectoral approaches when developing normative frameworks
- Visualized lessons and impact ACROSS sectors
- Ensured normative guidelines are contextualized to practical actions on the ground through experience

Urban Planning Responses in Post Crisis Contexts

Strategies and Tools



Designing for Displacement: A Spatial Toolkit

Ecological and Landscape Strategies + Economic Development and Livelihoods = Integrated Spatial Design



A comprehensive approach across sectors can effectively address displacement in urban areas

THANK YOU!

An interagency approach to integrating health and social protection in Somalia

Amun Osman, Urban Development Specialist, Danwaadag Consortium, IOM



DANWADAAG

Towards Durable Solutions to Displacement

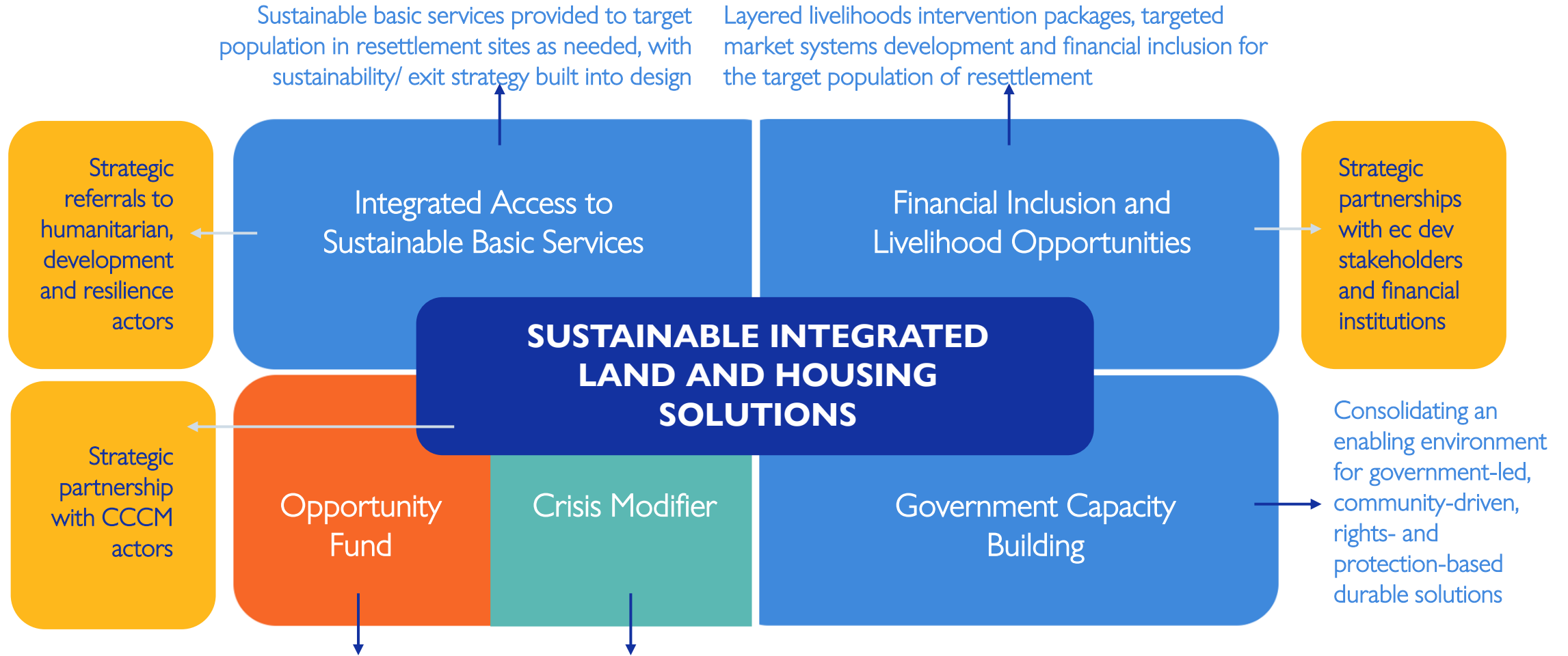


**GLOBAL
SHELTER CLUSTER**

Coordinating Humanitarian Shelter and Settlements



Components of the Danwadaag Approach



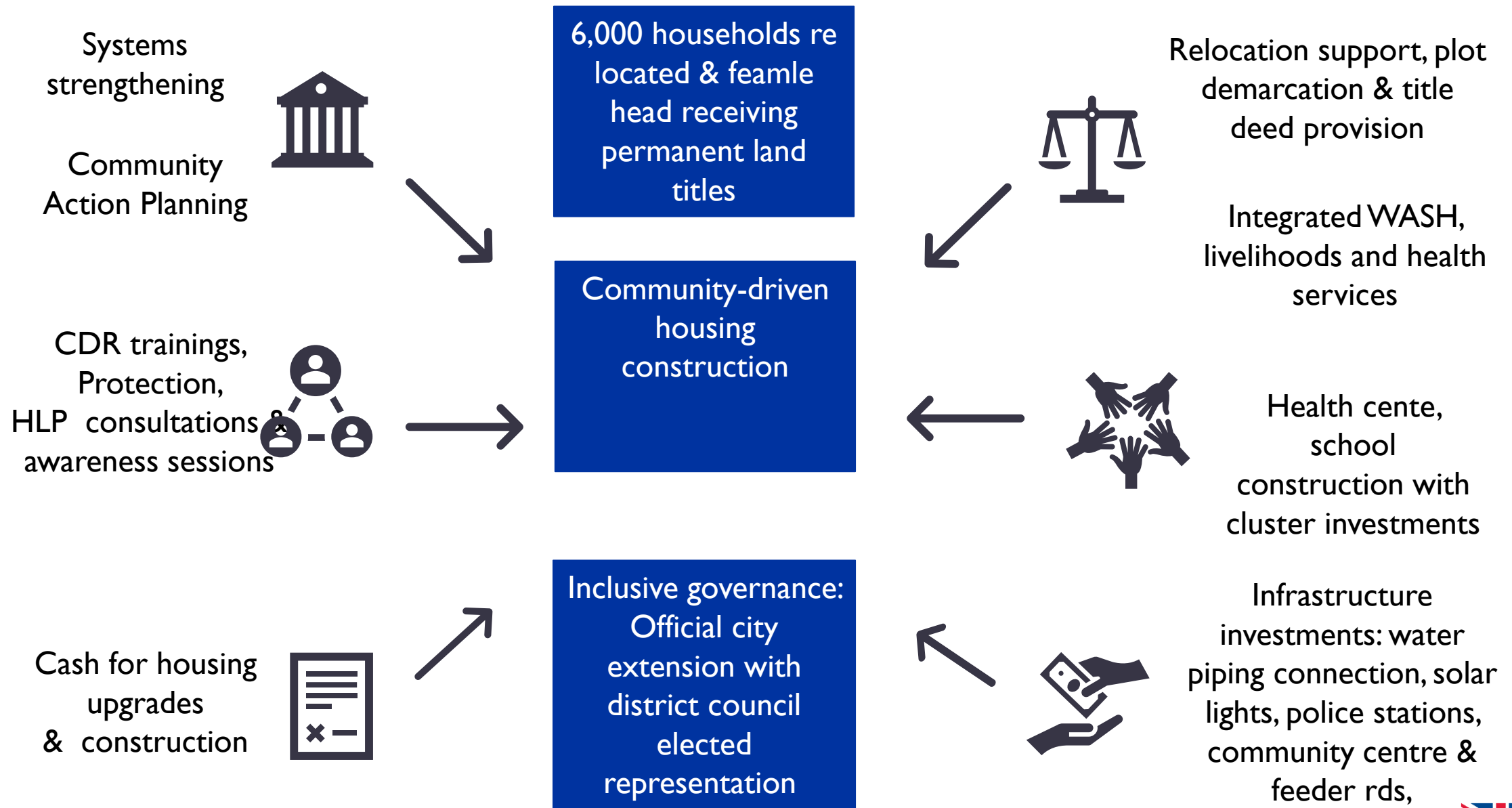
Strategic investments with set-aside centrally-managed budget for local partners to tap into when opportunities arise.

Funding: to be managed by the CLT and guided by set criteria for investment, including to broker deals/ transactions.

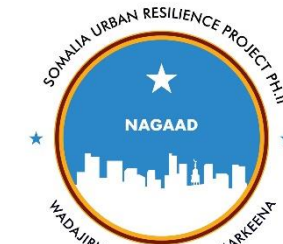
Protecting longer term DS gains in settlement locations by addressing humanitarian needs

Funding: percentage of overall budget triggered by certain early warning systems criteria

Danwadaag Specific Activities & Outcomes



Integrated City Extensions: Collective Efforts in Garowe, Somalia



The **Nagaad Project** drought response is funded by the World Bank through the Federal Government of Somalia and implemented by IOM and partners, in coordination with the municipalities of Mogadishu, Garowe, and Baidoa.

Barwaqo Village, Baidoa, Somalia



Figure 3 Barwaqo Phase-3 Site Plan

Thank you!

Follow us:



<https://regionaldss.org/danwadaag/>



@Danwadaag_DS / @IOM_Somalia



**GLOBAL
SHELTER CLUSTER**

Coordinating Humanitarian Shelter and Settlements



Shelter as an Entry Point

Cross-Sectoral & Inter-cluster Cooperation

Martha Kow Donkor, Yemen Shelter Cluster



**GLOBAL
SHELTER CLUSTER**

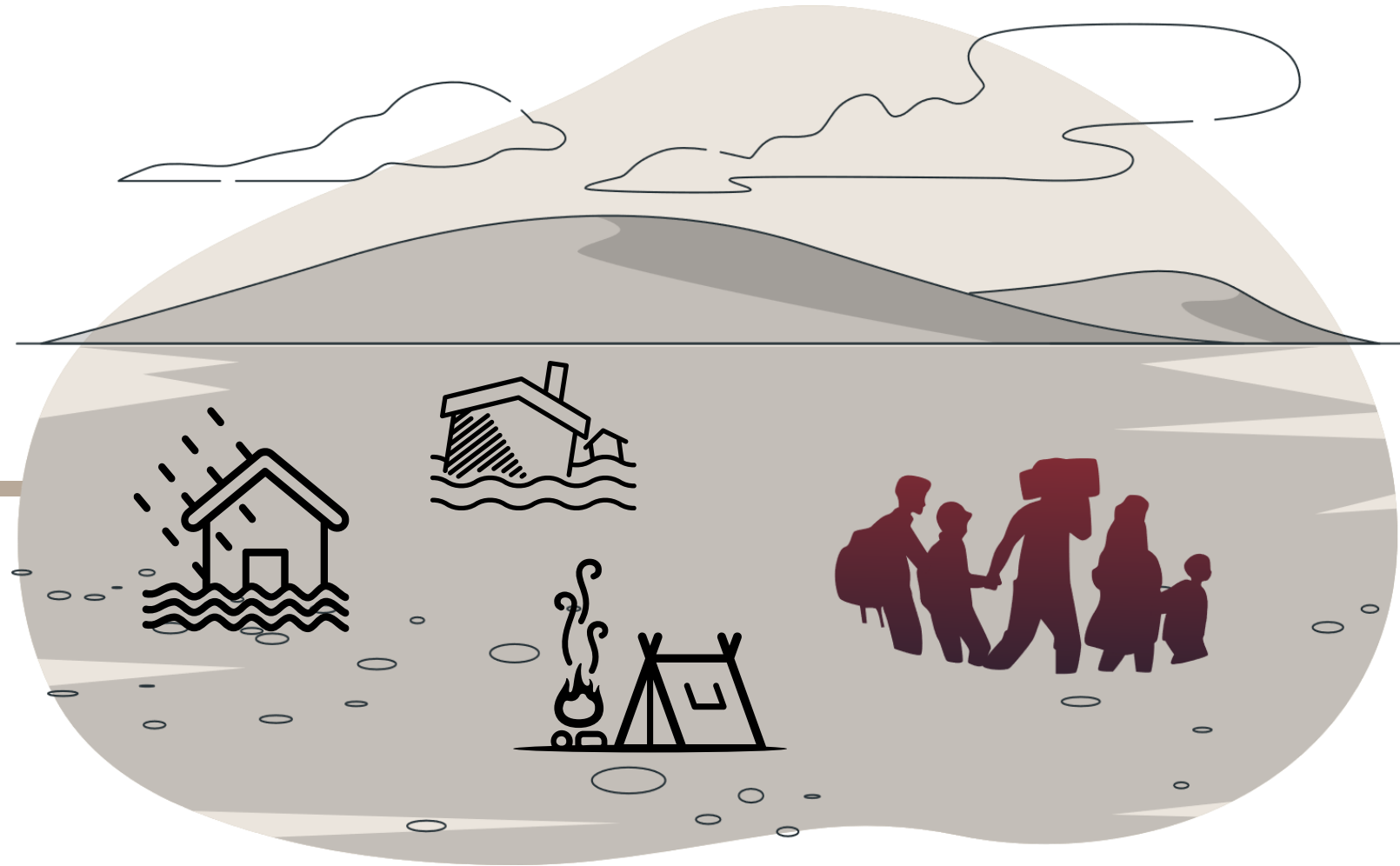
Coordinating Humanitarian Shelter and Settlements



**YEMEN
SHELTER CLUSTER**

Coordinating Humanitarian Shelter and Settlements

Impact of disasters (conflict and natural disasters)



Why Shelter is an entry point to integrated response (Area-Based / settlements approach)



Integrated Response for IDPs

Protracted Situation

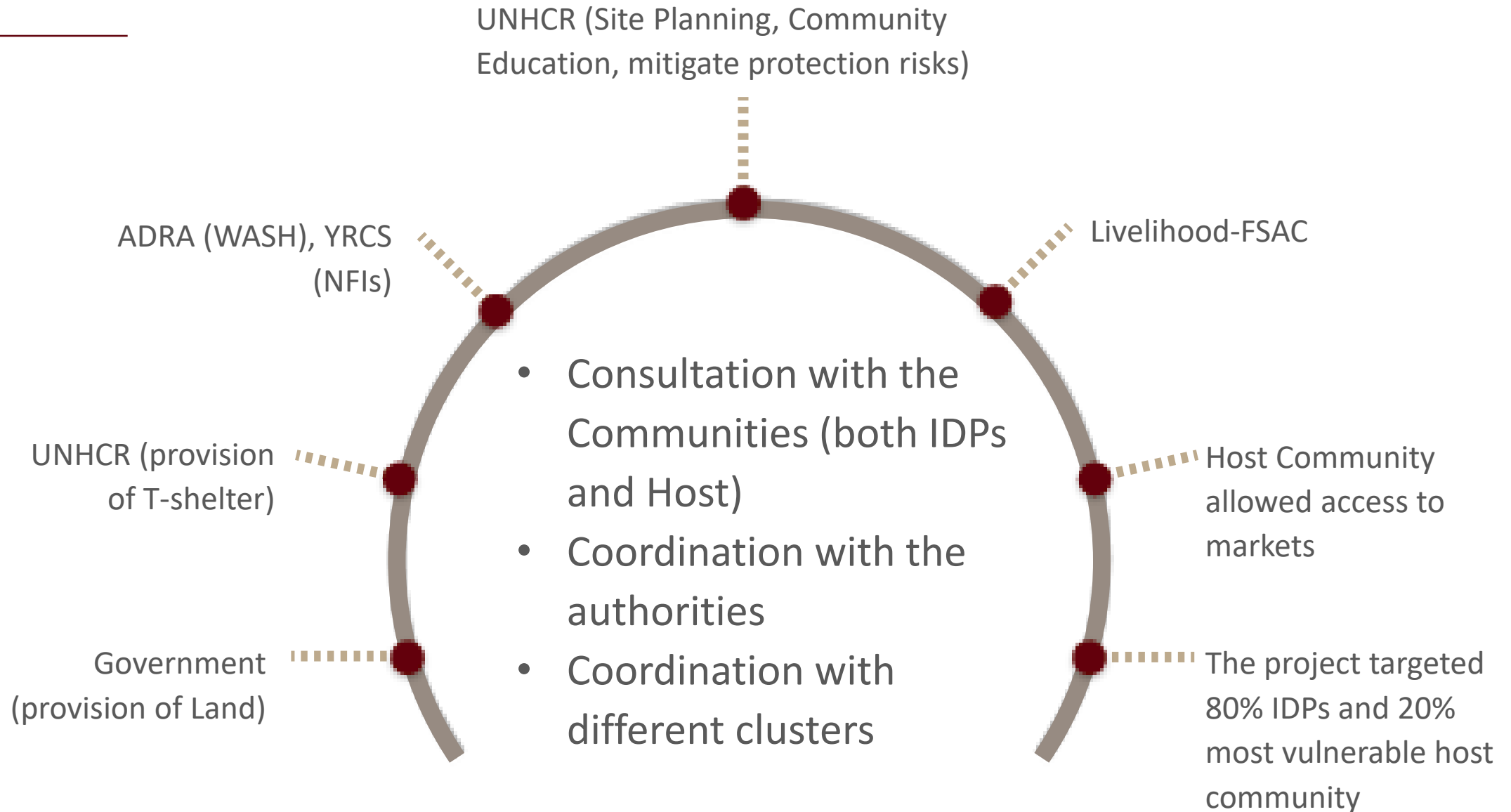
Bani Hushaish / Yemen

(2022 - 2023)



Background of Bani Hushaish District

The process





Why Integration is Important

- Strengthens multi-partnership approach.
- Guarantees the rights of the affected population.
- Respond to their holistic needs.
- Optimize resources.
- Mitigate further protection risks.
- Achieve shelter, protection, and other sectoral outcomes.



Impact of Integrated Response

- ❖ Improved the effectiveness.
- ❖ Achieved collective outcomes.
- ❖ Addressed immediate needs, longer-term recovery, and resilience.
- ❖ Promoted ownership and peaceful coexistence.

Challenges and Lessons Learned

CHALLENGES



FUNDING



HLP ISSUES

LESSONS LEARNED

- Community engagement and ownership
- Leadership by the authorities
- Commitment by sectoral partners
- Centrality of Protection
- Sectoral outcomes
- Settlement approach/ Area-based
- Shelter as an entry point to address holistic needs

THANK YOU!



Lunch

Be back in 90 min
