

# Winterisation guidelines Nepal, winter 2015



# Package of Assistance

Result of:

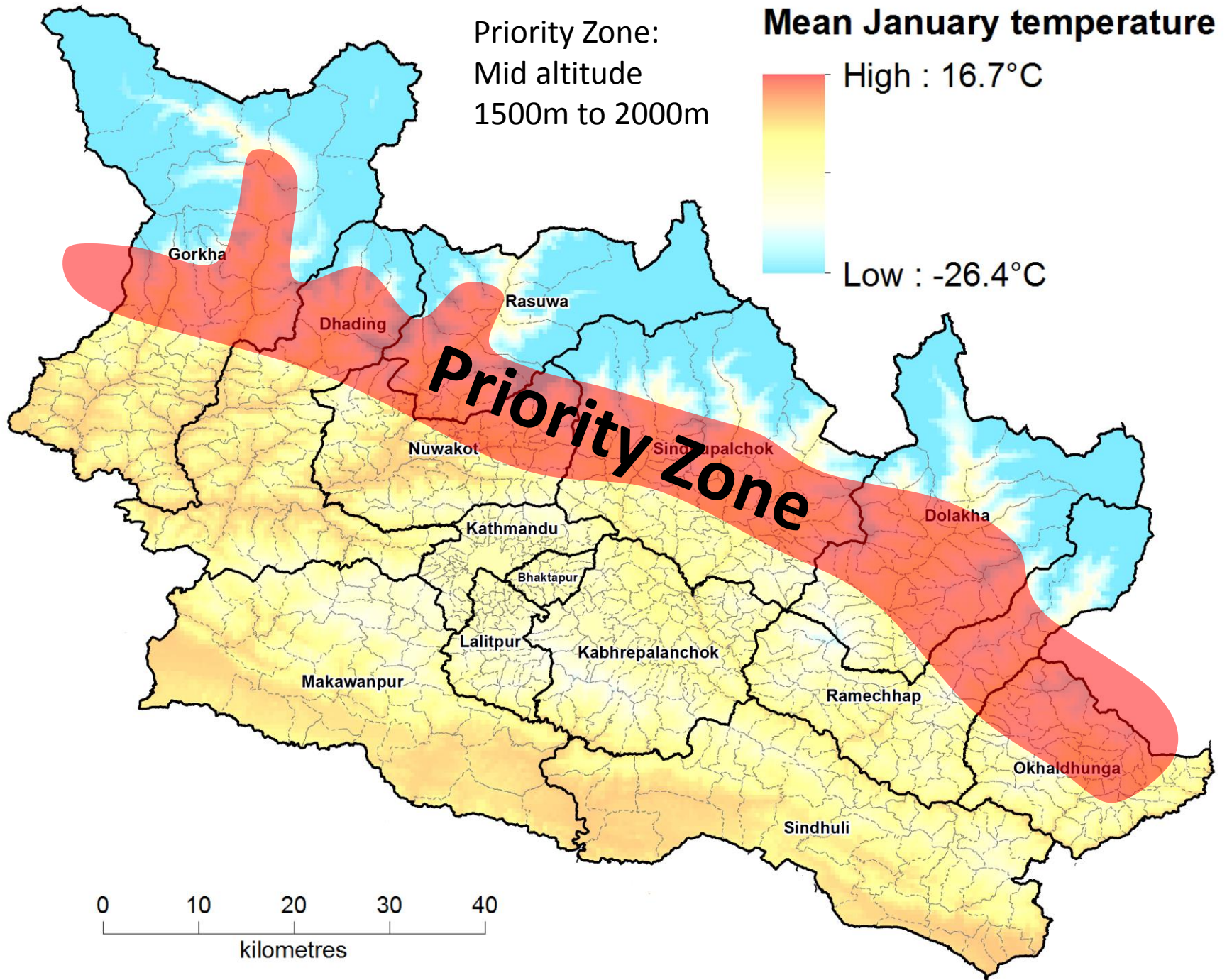
- Assessment needs and market assessment
- Analysis of previous winterisation guidelines
- Winterisation TWG discussions



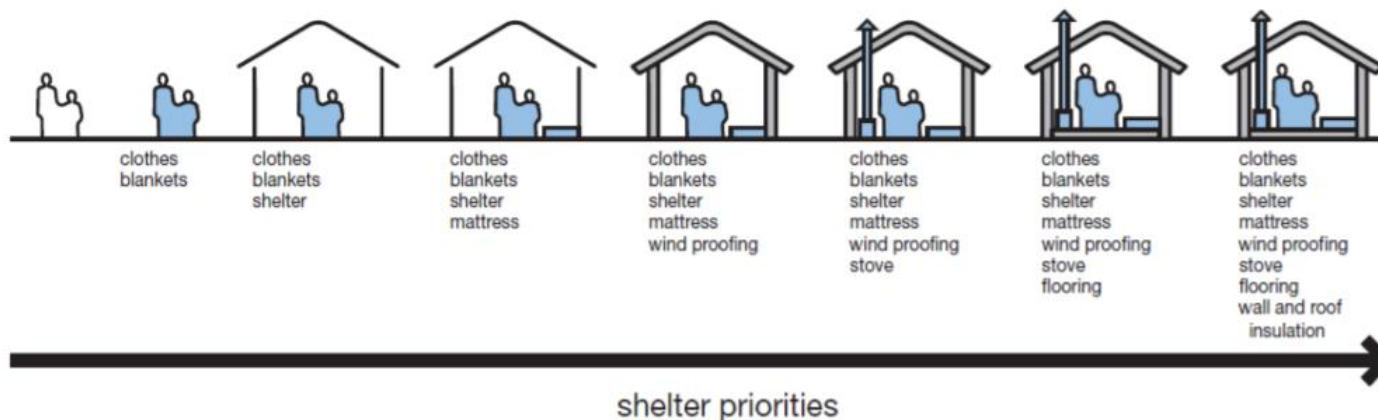
# Assessment and market analysis conclusions

- 90% of households felt unprepared for winter
- The highest levels of need were at mid altitudes
- Most requested items:
  - clothes, blankets, bedding
  - High altitudes: fuel and firewood
- Market access diminishes with altitude





# Analysis of previous winterisation guidelines







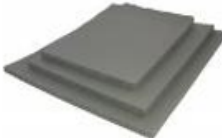


| Winterisation Priorities |                   |  |
|--------------------------|-------------------|--|
| Personal Insulation      | Personal          | Clothes, blankets  |
|                          | Bedding           | Mattress   |
| Ground Insulation        | Prevent Heat loss | Raised wooden floors, foams                                    |
|                          | Prevent Damp      | Plastic sheeting   |
| Water Proofing           | Block leaks       | Tarpaulin, plastic sheeting                                    |
| Wind Proofing            | Block Draughts    | plastic sheeting, canvas, blankets                             |
|                          |                   | building low walls, excavating downwards (if no flooding risk) |
| Heating                  | Rise Temperature  | Stoves, fuel   |



# Package

General Package for altitudes above 1500 m in order of perceived priority. Total approximate value:

**HH in Temporary Shelters:** 101 \$ for Bulk Purchase, 126 \$ for Cash/Voucher. **HH in Displacement Camps:** 163 \$ for Bulk Purchase, 202 \$ for Cash/Voucher

| Item   | T Shelter QTY | Displ. Camps QTY | Description  | Image  | Bulk Purchase  | Cash Transfer /Voucher  |
|--|---------------|------------------|--|--|--|---|
| 1. Clothes   | 3/HH          | 5/HH             | <ul style="list-style-type: none"> <li>\$45 voucher or conditional cash as top to existing household clothing</li> <li>Calculation Based on:                             <ul style="list-style-type: none"> <li>\$15 per person for average family size of 5</li> <li>Expectation that only 2-3 items will be needed per household</li> </ul> </li> </ul>  |                         | Not Recommended  | <ul style="list-style-type: none"> <li>\$45 HH Temp. Shelter</li> <li>\$75 HH D. Camps</li> </ul> |
| 2. Blankets  | 3/HH          | 5/HH             | <ul style="list-style-type: none"> <li>Based on target of 5 blankets per family taking into account prior recommended cluster distribution of 2 blankets and rescued household goods from prior to earthquake.</li> <li>Intended as a top-up of existing capacity</li> <li>Provided as 3 single or one double and one single blanket</li> </ul>  |                         | <ul style="list-style-type: none"> <li>\$30/HH Temp. Shelter</li> <li>\$50/ HH D. Camps</li> </ul> | <ul style="list-style-type: none"> <li>\$45/HH Temp. Shelter</li> <li>\$75 HH D. Camps</li> </ul> |
| 3. Sealing off kit   | 1/HH          | 1/HH             | <ul style="list-style-type: none"> <li>TARPAULIN                             <ul style="list-style-type: none"> <li>Can be cut into sections to fill holes, cover gaps, waterproof floors or cover goods/crops</li> </ul> </li> </ul>  |                         | \$15/HH  | \$20/HH   |
|  | 1/HH          | 1/HH             | <ul style="list-style-type: none"> <li>ROPE AND TIRE WIRE                             <ul style="list-style-type: none"> <li>25 m rope, 25m tie wire</li> </ul> </li> </ul>    |  | \$5/HH   | \$8/HH  |
|  | 6m2/HH        | 18m2/HH          | <ul style="list-style-type: none"> <li>FLOOR/ BED FOAM                             <ul style="list-style-type: none"> <li>Foam sheet insulation, min thickness 12 mm, high density and close cell</li> <li>Can be used for floor insulation, mattress, cut up for sealing off or wall insulation.</li> </ul> </li> </ul>  | <ul style="list-style-type: none"> <li>\$6/HH Temp. Shelter</li> <li>\$18/HH <del>D.Camps</del></li> </ul> | <ul style="list-style-type: none"> <li>\$8/HH Temp. Shelter</li> <li>\$24/HH D. Camps</li> </ul>   |   |
| Supplemental Package for High Altitude and Cold Climates, above 2000 m. Total approximate value: 50\$ for Bulk Purchase, \$65 for Cash/Voucher |               |                  |  |  |  |   |
| 4. Wood Improved Cooking Stove   | 1/HH          | 1HH              | <ul style="list-style-type: none"> <li>Only for high altitude areas</li> <li>Low emission stove</li> <li>Suitable for government stove subsidy</li> </ul>  |                       | \$40   | \$50  |
| 5. Solar lamps   | 1/HH          | 1HH              | <ul style="list-style-type: none"> <li>Can be hung on the ceiling or wall to provide ambient light</li> <li>Can be carried as a lantern</li> </ul>   |                       | \$10   | \$15  |

# Recommended implementation modalities

- Restricted cash/ Voucher for clothing and blankets if there is access to markets
- Distribution of sealing-off kits in-kind (tarpaulin, rope, wire and foam) to ensure quality
- Higher altitude, areas with limited market access, in kind distribution for all items



# Proposed prioritization and targeting

- Higher altitude areas prioritized:
  - <1500m: General Package
  - <2000m: Supplementary Package
- Targeted approach recommended over than blanket distribution, e.g. HHs with totally destroyed or heavily damaged houses
- Avoid duplication. Some families have already received assistance (blankets, Tarps, CGI)



# Partner's Winterisation planning

- Winterization Planning Survey for partners was launched end of September 2015.

## Requested information:

- ✓ Implementation areas
- ✓ Target HH,
- ✓ Funding status
- ✓ Method of implementation
- ✓ Transportation means
- ✓ Use of SC winterization guidance
- ✓ Start and finish date

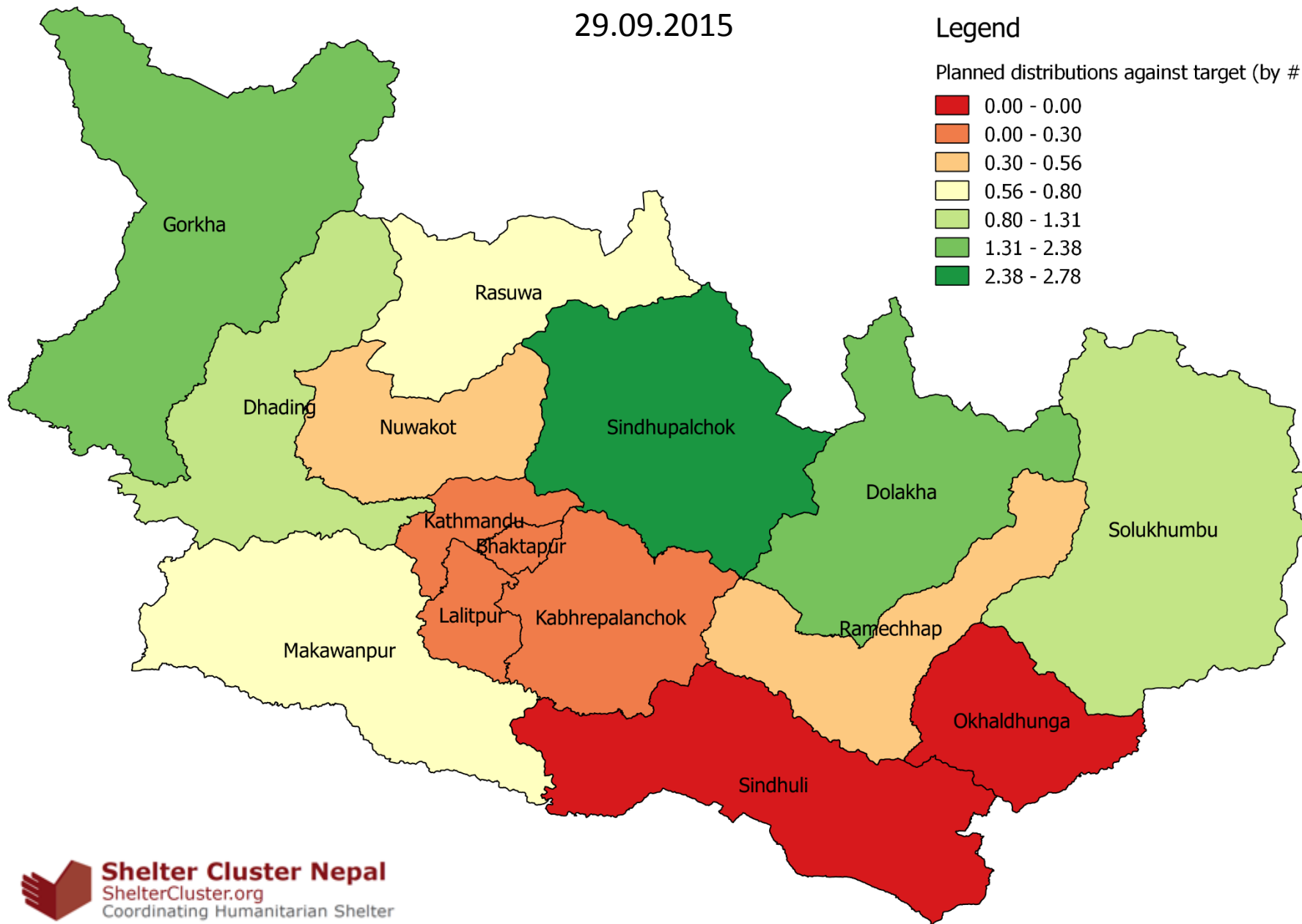


# Planned winterization distributions according to the SC Winterization survey

29.09.2015

## Legend

Planned distributions against target (by # HHS)

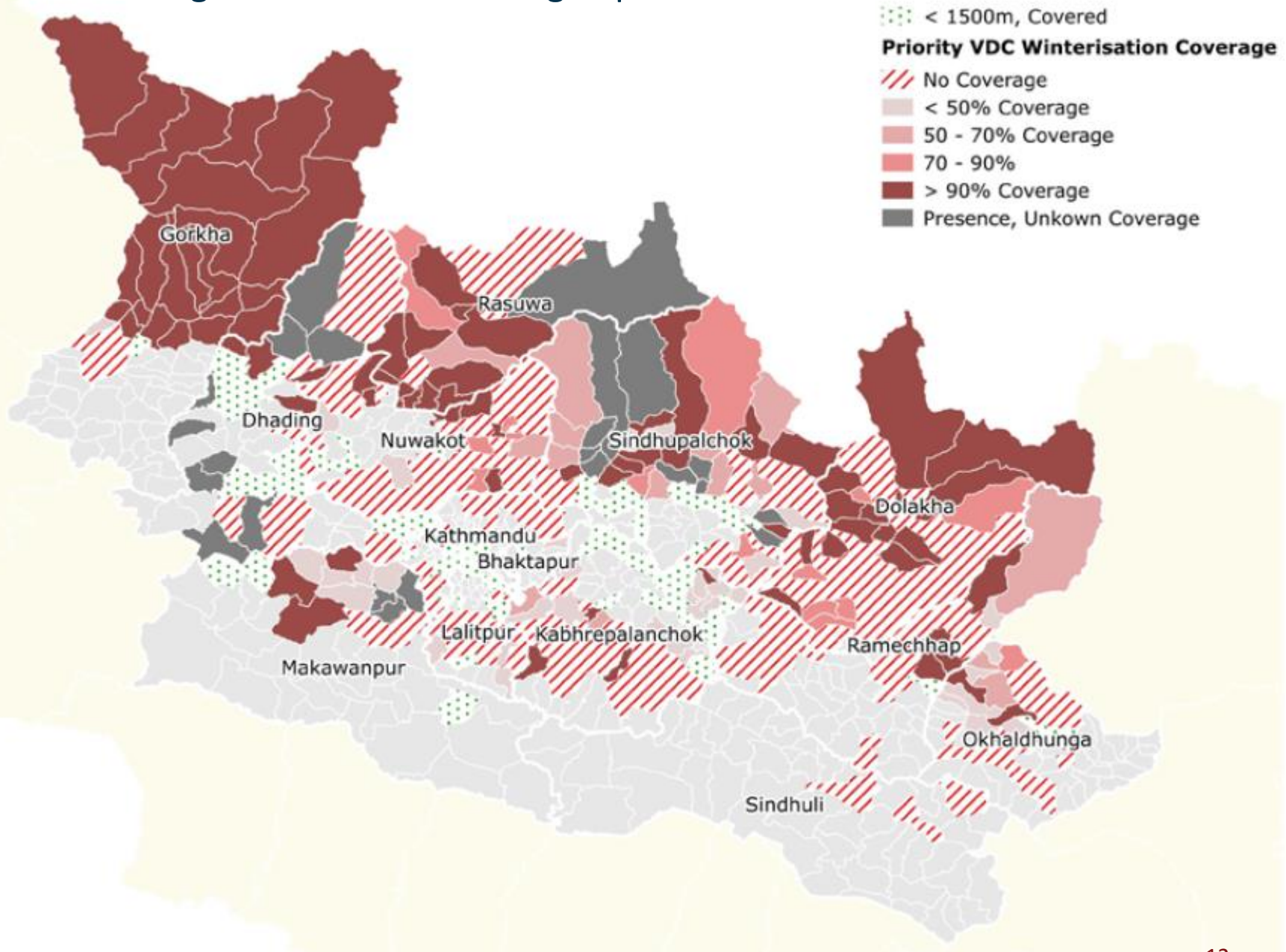


# Winterisation planning survey Findings

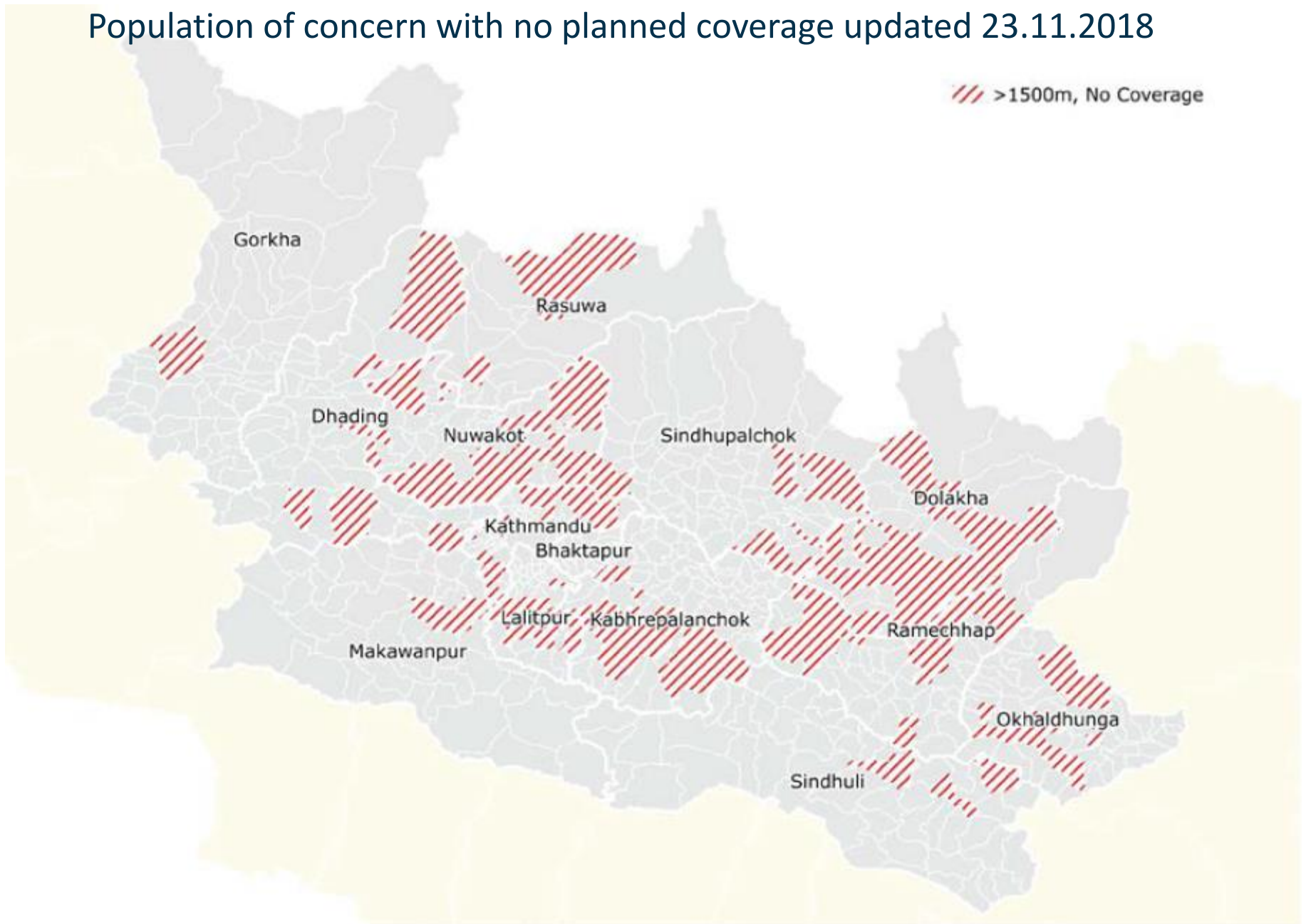
- 16 out of 22 agencies that responded, had planned winterisation assistance
- 10 had fully secured funds
- All the agencies were using SC winterization guidance
- 5 were using UNHAS for transportation
- Starting between October and November, finishing end of November.
- 9 only in kind distribution/3 unconditional cash



# Planning winterisation coverage updated 23.11. 2018



# Population of concern with no planned coverage updated 23.11.2018



# THANK YOU !

