

NWSW Shelter Cluster Meeting

14th April

Bamenda, Buea Hybrid



Cameroon Shelter Cluster
ShelterCluster.org
Coordinating Humanitarian Shelter

Agenda

1. Introductions
2. Updates from the National Sector Coordinator
3. Action Points from the Last Meeting
4. 5W 1st Quarter Updates
5. NRC Lessons Learned on Repairs Pilot in Donga Mantung
6. NFI prices/NFI Checklist – Meeting the Minimum Standard and Needs while prices of items increase
7. Buea Floods Update
8. Partner Updates

Updates from the National Sector Coordinator

Action Points

Action Point December	Follow Up
Shelter Cluster to publish a one pager on the overall tools that it has in place with the program cycle.	Done and Circulated and embedded on the main page of the Shelter Cluster website: https://sheltercluster.org/north-west-south-west/documents/northwest-and-southwest-cameroon-shelter-cluster-one-pager
Shelter Cluster to host several refresher sessions such as on the 5W Dashboard, technical guidelines, and other items that require more time.	2 were held: <ol style="list-style-type: none"> 1. Shelter Kit Checklist Training and Review: Attended well and good engagement 2. Dashboard Refresher was lower attended and no interaction 3. Looking more at in person modalities.
.Shelter Cluster Partners to circulate the XLS of the Post Distribution Monitoring Form and to sensitize their M&E staff on the inclusion of some of the outcome questions into agency-specific forms and share the results with the Shelter Cluster.	How many cluster partners shared this form with their M&E colleagues?

Action Points (Continued)

Action Point December	Follow Up
Shelter Cluster to include transfer value and cost of in-kind items in the 5W.	Done and added to the Dashboard: So far 2 cluster partners have reported on this new area: NRC and SHUMAS
Shelter Cluster to include sub-partners in the 5W to give greater visibility to national NGOs	Done which has given SIRDEP, SHUMAS, and AMEF more visibility in this year's reporting.
Shelter Cluster to create a Whatsapp group to facilitate communication between Shelter Cluster partners. https://chat.whatsapp.com/KkYfozHRIQrE3D9i5e48g1	Created
Workshops on Greening of the Response	Held on 1 st and 2 nd of March in NW 16 th and 17 th March in SW Reports and outputs were circulated and all online



Action Points (Continued)

Action Point December	Follow Up
Shelter Cluster to circulate final version of the CCPM	Done and Published available on the Shelter Cluster website
Shelter Cluster partners to create a separate meeting link to include senior officers in the Northwest and Southwest, while assuring that one staff continues to be present during the cluster meetings	This meeting represents the first implementation of this.
Shelter Cluster and WASH Cluster to hold joint meeting to advance on a joint framework between the two clusters	Not yet done- Had some WASH partners in the greening the response workshop which enabled better collaboration in this area, but mostly the action point is not yet addressed

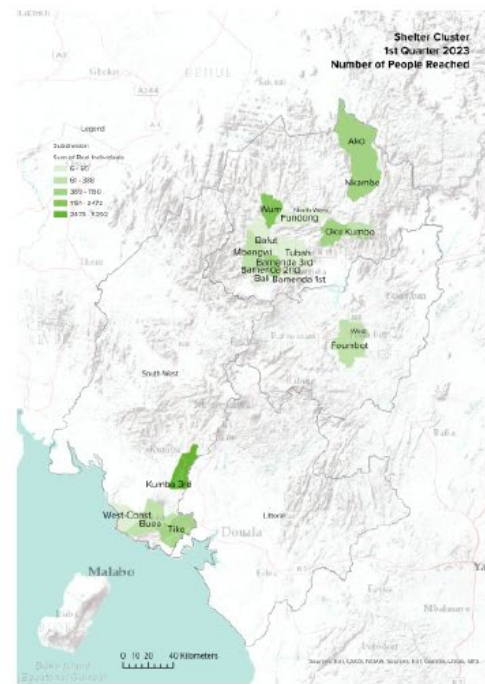


1st Quarter Factsheet and Updates to the Dashboard



North West South West

March 2023



NRC Lessons Learned

- Objective: improve the living conditions, dignity and protection of vulnerable displacement affected population
- Activity: provision of construction materials to households for light and medium shelter repairs.
- Modality: Cash or in-kind or mixed
- Strategy: Local safe building practices, materials, expertise and capacities should be used where appropriate, maximising the involvement of the affected population and local livelihood opportunities

Process

- Before implementation ensure the following is done.
- Define your Target Population and the conditions
- Location of implementation
- Duration of Activity
- Cost of activity
- Organizational capacity
- Market assessment



Implementation

- Set up and train a shelter committee. The composition should include local leaders, women, Returnee, carpenter, builder, religious leaders. The success of the activity depends on how you select and empower the shelter committee. train committee on rebuilding safer
- The committee selects and validates the beneficiaries based on set criteria. And important criteria should be that of verified security of tenure for selected beneficiaries

Implementation

- Skilled Labour is usually not readily available in the communities, and even when available, not affordable by persons of concern
- Carry out a detailed BOQ for each household. Households should receive just what they need.
- Consider improving WASH facilities in households if possible

Challenges

- Continuous increase in prices of constructions items
- The very vulnerable might be left out of assistance if the conditions for assistance will require huge engagement from households
- Take in to consideration the modality, and if you choose in-kind distribution because of market conditions, plan for a progressive distribution and follow-up over a long period of time
- Skilled labour not readily available in communities

Pictures of repairs



Cameroon Shelter Cluster
ShelterCluster.org
Coordinating Humanitarian Shelter

Pictures of Repairs



Pictures of repair



Update on NFI Prices and the Creation of an NFI Checklist

MINIMUM NFI KIT				
DESCRIPTION	Units / kit	Comments	Price per unit	
Family Size Sleeping Mattress 140X190X15cm foam mattress covered with synthetic cloth	1		32,200.00 XAF	32,200.00 XAF
Blanket, fleece, light thermal resistance, 150 x 200 cm.	2		10,700.00 XAF	21,400.00 XAF
Mosquito nets, long-lasting insecticidal nets, rectangular large, 160 x 180 x 150 cm	2		5,000.00 XAF	10,000.00 XAF
Stainless steel/aluminum cooking pot with handles and lid, 5 l.	1		7,250.00 XAF	7,250.00 XAF
Stainless steel/aluminum cooking pot with handles and lid, 10 l.	1		10,500.00 XAF	10,500.00 XAF
Stainless steel plates (deep), diam. 22cm.	6		500.00 XAF	3,000.00 XAF
Plastic cups with handle, max. 0.5 l.	7		630.00 XAF	4,410.00 XAF
Plastic jar with lid for drinking water, 2 l.	1		1,200.00 XAF	1,200.00 XAF
Stainless steel serving spoon, 35 ml.	1		900.00 XAF	900.00 XAF
Stainless steel spoons, soup, 10 ml.	6		1,250.00 XAF	7,500.00 XAF
Plastic basin, medium size, 7 l.	1		3,000.00 XAF	3,000.00 XAF
Jerry can, food grade LDPE, suitable for drinking water, rigid, screw cap. Light colour only (white, yellow), UV treated for long-term outdoor use, 20 l.	2	Preferably not the collapsible design	3,700.00 XAF	7,400.00 XAF
Heavy duty plastic bucket, without lid, 15 l.	1	Laundry	5,500.00 XAF	5,500.00 XAF
"Savo" soap bar, 250g.	6	Laundry + dishes	500.00 XAF	3,000.00 XAF
Big "Baco" bag, polypropylene bag	1	Big enough for kit transportation	3,200.00 XAF	3,200.00 XAF
Weatherproof and shockproof solar lamp / charger.	1		7,250.00 XAF	7,250.00 XAF
				127,710.00 XAF

- Increase in the Price of the Items
- Poor funding situation impacting partners' ability to comply with the full kits especially when distributing in-kind
- Voucher – Cash Transfer Value between 43,000 XAF-46,000 XAF from partners who reported

Updates on Buea Floods

