

## Meeting Minutes

### Western Visayas - Shelter Cluster meeting

**Location:** Roxas city – Ocha Office

**Date:** 24.06.2014

**Chair:** Shelter Cluster Coordinator – Roaming (Birgit Vaes) and DSWD – Mrs. Josephine Degala

#### AGENCIES IN ATTENDANCE:

Welt Hunger Hilfe, Handicap International, UN OCHA, UN HABITAT, Philippines Red Cross, Tearfund, World Vision International, IOM, DSAC-Kalibo Caritas Belgium/France,

#### 00. FOLLOW-UP OF ACTION POINTS PREVIOUS MEETING

<b>Action point</b>	<b>Status</b>
TESDA CARPENTER TRAININGS SC will contact Tesda to ensure inclusion of 8 key messages in training curriculum	Training plans to be submitted to SC – SC Training advisor being hired
FOCAL POINTS Resend TOR Shelter partners interested/willing to become a focal point at municipality level.	List and TOR to be send out
NO BUILD ZONE Gather information from costal LGUs by partners, summary made by SC	Template to be send out
TEMPLATE TO GATHER PROJECT DATA/COORDINATION AT BARANGAY LEVEL Finalize data on municipality and barangay level	Completed
SET-UP TECHNICAL CLINIC'S Date and times to be determined	Completed
PREPAREDNESS PLAN Ocha will send out a table to gather information from agencies regarding their preparedness plans	Completed
SEEKING FOR WASH ASSISTANCE SC follow up on assistance provided by agencies regarding wash activities. See point 1.7 – answer from ACF	Completed : Combined meeting on Thursday 26/06/14 -13:30

#### 01. ACTIONPOINTS FOLLOW UP

##### 1.1 Tesda Carpenter training

Agencies are requested to send their construction training plans to the SC, all plans will be summarized and shared with all partners to prevent overlaps. It is the aim that carpenters supplementary to agencies programs will be trained to ensure enough skilled labour to

participate to the DSWD ESA project that will start within the next couple of months. (See point 02)

Currently no Tesda training for trainers on National level is ongoing, there are some initiatives on local level but not yet in Region VI.

## 1.2 Municipality Focal point

Since the implementation of a regional focal point didn't work out it was agreed with the partners to set up a municipality focal point. SC will develop a list and a TOR for this role. The aim is to appoint the agency who covers most of the barangays/beneficiaries in a municipality as the focal point for this municipality.

This role will cover the following: each agency that plans work in a certain municipality needs to contact the focal point to prevent overlaps, the focal point will be in close contact with the LGU focal point to share information, ensure that beneficiary lists are updated by agencies working in the municipality, ensure that DSWD will utilize these adjusted beneficiary list and only fills in gaps, gather information regarding no build zone from LGU and share with SC. (See point 1.3)

## 1.3 No dwelling zone

It was agreed that the municipality focal point of coastal municipalities will gather information on LGU level regarding their position and current status of the "no build zone" and related hazard mapping. The SC will send out a template with questions for the LGUs, once all responses are received the SC will summarize the results and share them with all partners and CwC so targeted communication can be shared with the respectively communities.

## 02. DSWD PROJECTS

- 2.1 Distribution of CGI sheets: 60,000 pieces are being distributed in North Iloilo and Capiz to selected HHs who didn't receive any support until date and each HH was given 3 to 4 CGI sheets. Due to the minimum impact of this program DSWD will not remove these recipients from the beneficiary list, consequently they will be entitled for further support.
- 2.2 Emergency Shelter Assistance Project (ESA): beneficiaries on the DAFAC list (numbers as per barangay scoping table – DSWD data from June 10<sup>th</sup> 2014) will be provided will the following support: 10,000Php cash for partially damaged houses and 30,000Php for totally damaged houses. Currently this proposal is submitted to the National Government and they are awaiting approval. If the proposal gets approved 447,107 HH will be reached with the ESA project.
- 2.3 Relocation: 2000 core shelter of 70,000Php/unit. With the LGU as counterpart for the site development. Interested LGUs need to submit a proposal to DSWD. Currently the following LGUs expressed their interest: Pilar, Conception, Estancia, Province Antique (500 Units).

This project is part of an existing DSWD program : currently approved for Pilar 50 units, Conception 200 units. This is a DSWD regular shelter program not emergency response – now beneficiaries from Yolanda' are incorporated in the program.

Pilar : LGU is providing land for 200 units – location in partnership with LGU

For the relocation project the houses will be constructed utilizing the Bayanihan method: HHs will be divided in groups of 5 to 6 families who will construct each other's house with the support of one skilled carpenter. The monitoring will be done by the municipality Engineer. HHs will be given cash for work for 10 working days it will take to construct one house.

The DSWD projects mentioned under point 2.2 and 2.3 are raising some concerns regarding the quality of construction. To ensure that houses funded by DSWD will be constructed according to the BBS methodology training to carpenters and municipality engineers need to be provided. Therefore, agencies are requested to provide SC with their training plans. (See point 1.1)

Additionally, there is the issue of beneficiary selection, where DSWD beneficiaries will already be supported by agencies. DSWDs position is that they will be covering the gaps, therefore it is of utmost importance that agencies share their final beneficiary selection with the LGU and if they decide not the work in an area despite what was previously announced the LGU needs to be informed. Also, agencies should not only verify the DAFAC lists as received from the LGUs but seek for beneficiaries beyond this list since the beneficiaries on the DAFAC will be assisted by DSWD anyway. This issue should be followed up on by the municipality focal point. (See point 1.2)

### **03. BARANGAY SCOPING TABLE**

The Barangay scoping table was updated with the latest information as received from the partners. Currently the SC IM team has uploaded this data into the new developed national database which is based on the Barangay scoping table. Region VI will be used to pilot this new database since this is the only region where the data gathering has already be adapted to the new system. The partners will be asked to check their data in the new database, once this is done the maps as shown during the SC meeting can be finalized and shared with all partners. This exercises only needs to be done once in the future the database only needs to be update bi-weekly with the number of houses finalized and/or HH selected for assistance during that period.

Since the coverage as illustrated in the Barangay scoping table is very low, it would be good if agencies could provide me with the numbers of planned activities per municipality even if the numbers per barangay are not known yet. This will increase the overall coverage.

### **04. STRATEGIC RESPONDS PLAN**

On National level the soft revision of the strategic responds plan is ongoing. Currently, shelter is funded for 42%. Irrelevant projects (projects not related to the recovery phase) will be withdrawn from the system and no new projects will be accepted.

### **05. PREPAREDNESS PLAN**

Agencies who haven't submitted their preparedness plan yet to OCHA are still requested to do so. Attached you can find a table as prepared by OCHA regarding the current submitted plans.

## 06. NO DWELLING ZONE

An overview was given in relation to the current information available regarding no dwelling zone and 40m zone.

- The original information regarding the 40m zone was provided by the Department of Environment and Natural resources. (see attached letter)
- The background on the following steps are listed in the attached document “Message for the change to the 40m zone”.
- At the end it means for the communities that the LGUs are responsible to undertake its own risk mapping and questions about aid provision in the unsafe zones will be answered by the LGU who agencies should liaising with on a very regular basis.
- This above mentioned document was developed in April 2014 and no changes have been officially received since.

As mentioned under point 1.3 it was agreed with the partners that all focal points of a coastal LGU will gather information on LGU level to find out the current status of the “no build zone” and related hazard mapping. Questionnaire will be shared with all partners.

## 07. ACCOUNTABILITY TO AFFECTED POPULATION

The AAP WG undertook a community feedback session in Panay, the results of this session is attached. For shelter the main issues were in relation to:

- Beneficiary selection: why are certain beneficiaries not qualified
- Request for building skills
- Insufficient building materials provided
- No build zone and land tenure: lack of information

## 08. TECHNICAL ISSUES

The new SC technical Coordinator for the roaming team Robbie Dodds was introduced. He can be reached on [tech2.phil@sheltercluster.org](mailto:tech2.phil@sheltercluster.org) and by phone on 0915 8868356.

The following items were discussed:

- The set-up of a technical forum with frequently asked questions as extracted from the technical clinics.
- Technical clinics can be held on requests from the partners.
- Visits to model houses and/or finalized houses can be arranged on request from partners.
- Any questions can be directed directly to Robbie
- The translation of the 8 key messages are being proof-read, a first version will be available on the website in the beginning of next week. If mistakes are detected while using it please inform Robbie, so the necessary changes can be made.

## 09. RELOCATION

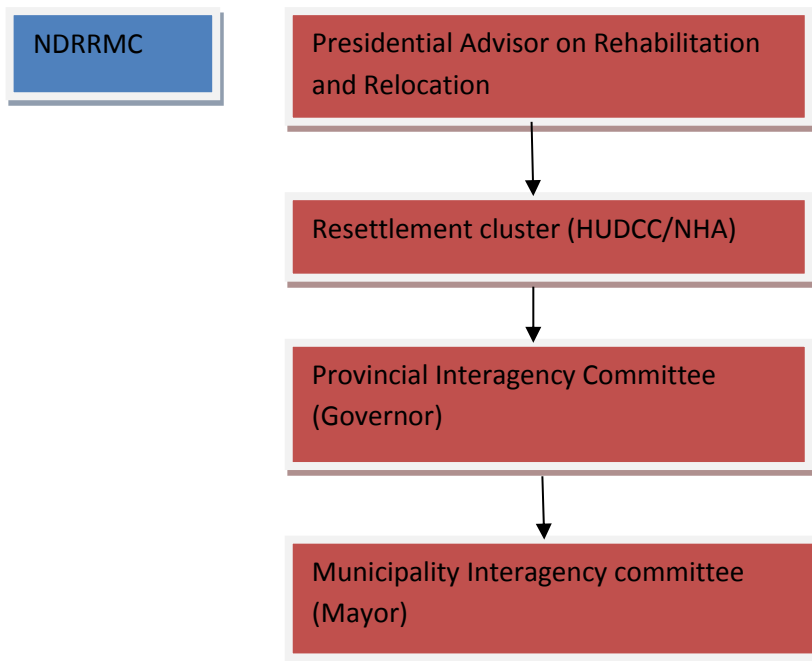
On Wednesday 25<sup>th</sup> of June a meeting was held in Capiz, Typhoon “Yolanda” Permanent Housing Program” – Rehabilitation and Recovery. Initiated by Congressman Castro and Congressman Del Rosario and lead by Housing and Urban Development Coordination Council (HUDCC)/National Housing Authority (NHA) with the presents of Mayors from the province of Capiz.

Issues discussed were:

- The magnitude of totally and partially damaged houses and HHs in unsafe areas. The data used was from DSWD dated 10<sup>th</sup> of June 2014. This data is similar to the one added to the barangay scoping table.
- Categorization of 40m buffer zone in terms of Geo-hazard from shoreline: the source of this data came from a DENR letter addressed to OPARR dated May 27<sup>th</sup>, 2014 and adapted on June 13<sup>th</sup>, 2014 at Cabinet meeting at Manila Golf & Country Club.

Category	Description
1. Safe area	May be less than the 40m buffer zone if it is free from geo-hazards
2. Unsafe area	May be more than the 40m buffer zone depending on the extent of the geo-hazards
3. Controlled area	May be less than the 40m buffer zone depending on the type of engineering interventions to be constructed

- Four “R’s” of Calamity response and related stakeholders:
  - **Relief:** 1<sup>st</sup> to 4<sup>th</sup> month – Emergency housing: evacuation centre and tents – LGU, DSWD, NGOs, DILG
  - **Recovery:** 2<sup>nd</sup> to 5<sup>th</sup> month – Transitional housing: shelter kits, bunkhouses, housing material assistance – DSWD, DPWH, NHA
  - **Reconstruction:** 5<sup>th</sup> month onwards – Permanent housing: Land ID/evaluation, MGB clearance, land development and housing construction – DSWD, Prov Gov, LGU, NHA
  - **Rehabilitation:** continuing - multi sectorial
- Available land for **province of Capiz** and DENR identified sites for resettlement  
For coastal areas 12,036 HHs need to be relocated. LGU land available for 1,446 units, balance of 10,590 units.  
For non-coastal areas 2,016 HHs need to be relocated. LGU land available for 570 units.
- The plan is to provide transitional housing sites from which HHs will move to adjacent permanent housing sites. This is mainly in relation to the already existing bunkhouses.
- Proposed Coordination structure:



The proposition is to set up a new structure to ensure focus on permanent housing, additionally DRRMC and DSWD are responsible for relief and recovery not for resettlement. The interagency committee on LGU level needs to be in place to ensure that all decisions are taken by the committee and not individuals.

- Rehabilitation plans:
  - Each province is requested to come up with their rehabilitation plans together with the 171 affected municipalities.
  - Plans should contain details of the following:
    - LGU plans and programs
    - Private sector projects
    - International Organizations/Aid agency projects
    - Civil Society Organization projects
    - Comprehensive Land use Plans
  - OPARR will assist LGUs in crafting provincial rehabilitation plans
- Proposed housing construction:
  - Proposed lot size: 40 m<sup>2</sup> (10mx4m)
  - Proposed building footprint: 22m<sup>2</sup> (5.5mx4m)
  - Two storey row houses
  - Cost per unit

Item	LGU/Gov owned land	Privately owned land
<b>A. Land Development</b>	PHP 85,000	PHP 85,000
<b>B. House construction</b>	PHP 195,000	PHP 195,000
<b>C. Land acquisition</b>		PHP 10,000
<b>TOTAL</b>	PHP 280,000	PHP 290,000

## 09. NEXT MEETING

**Tuesday 15<sup>th</sup> of July 2014, 2pm** at OCHA meeting room, Business center, Roxas.