

# National Shelter Cluster Meeting

Kathmandu – DUDBC

27<sup>th</sup> May 11am



# Agenda

1. Welcome
2. Latest figures
3. General update
4. Shelter assessments
5. Technical update
6. Information Management update
7. Key issues/Looking ahead
8. AOB



# Latest figures

## Damage assessment:

- 500,717 homes destroyed
- 269,190 damaged homes.

## Tarpaulins:

Shelter Cluster target            700,000 (350, 000 families)

### Distributed

Government	230,569
Shelter cluster partners	244,203
<u>TOTAL</u>	<u>474,772</u>

## Other distributions:

Tents:	17,006
Tool kits and fixings	1,214
Household kits	48,421
Blankets	55,954



# General update

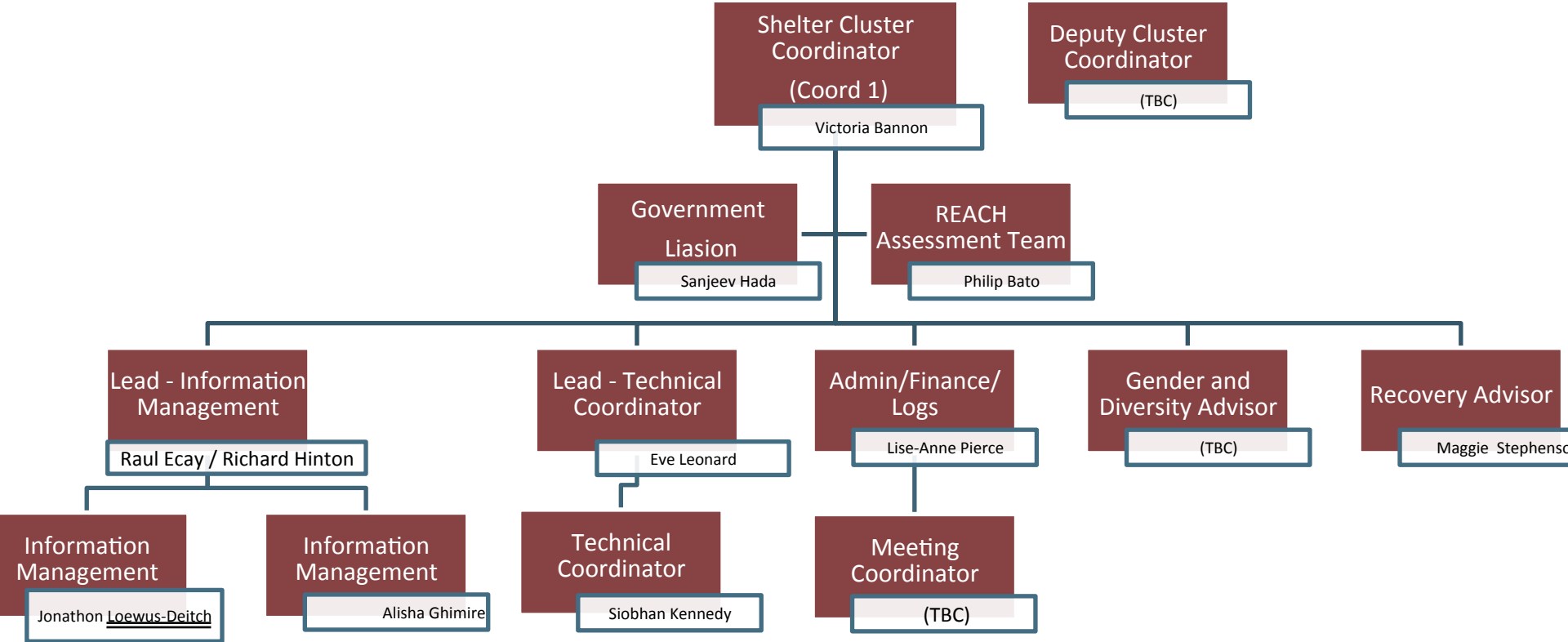
- Nepal Earthquake: One Month On
- Flash Appeal revision
- Recovery & reconstruction: Post Disaster Needs Assessment
- Shelter Cluster structure



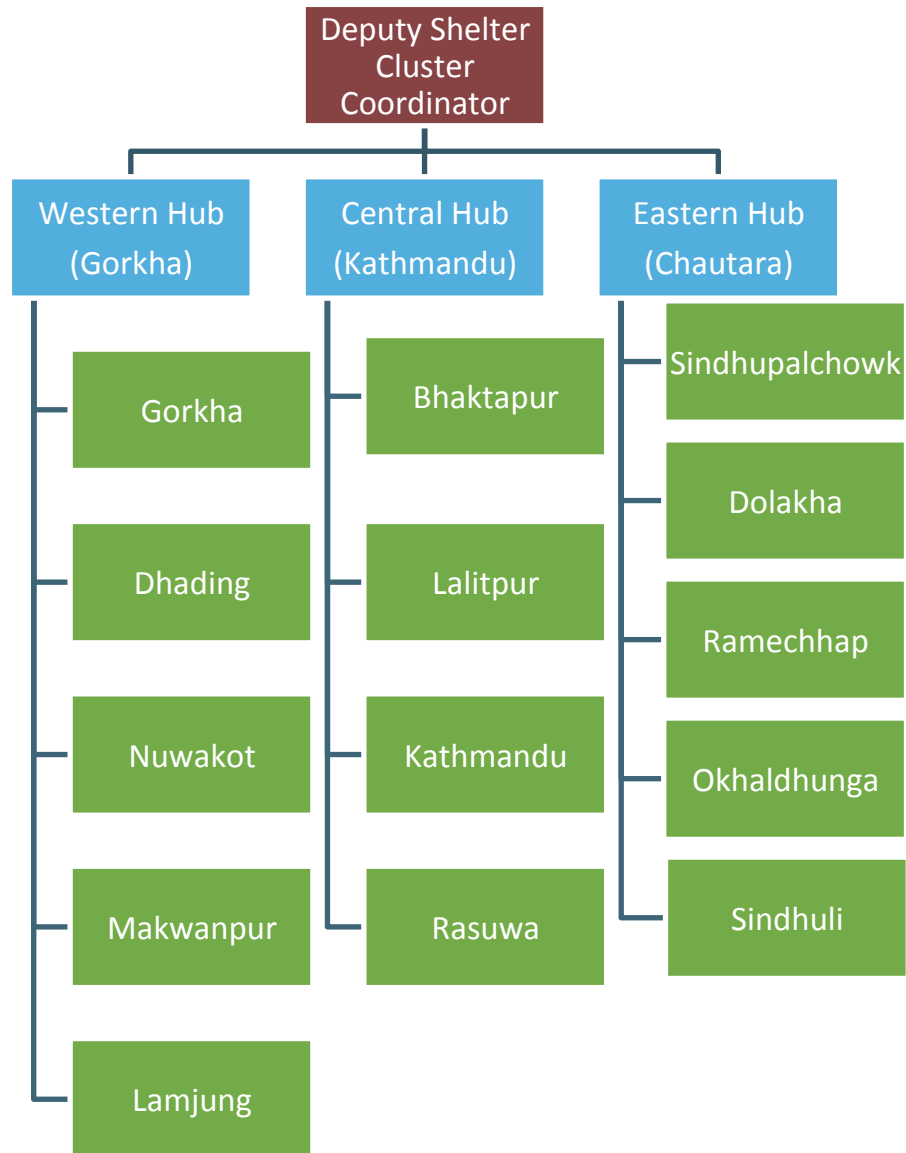
# Shelter Cluster Structure



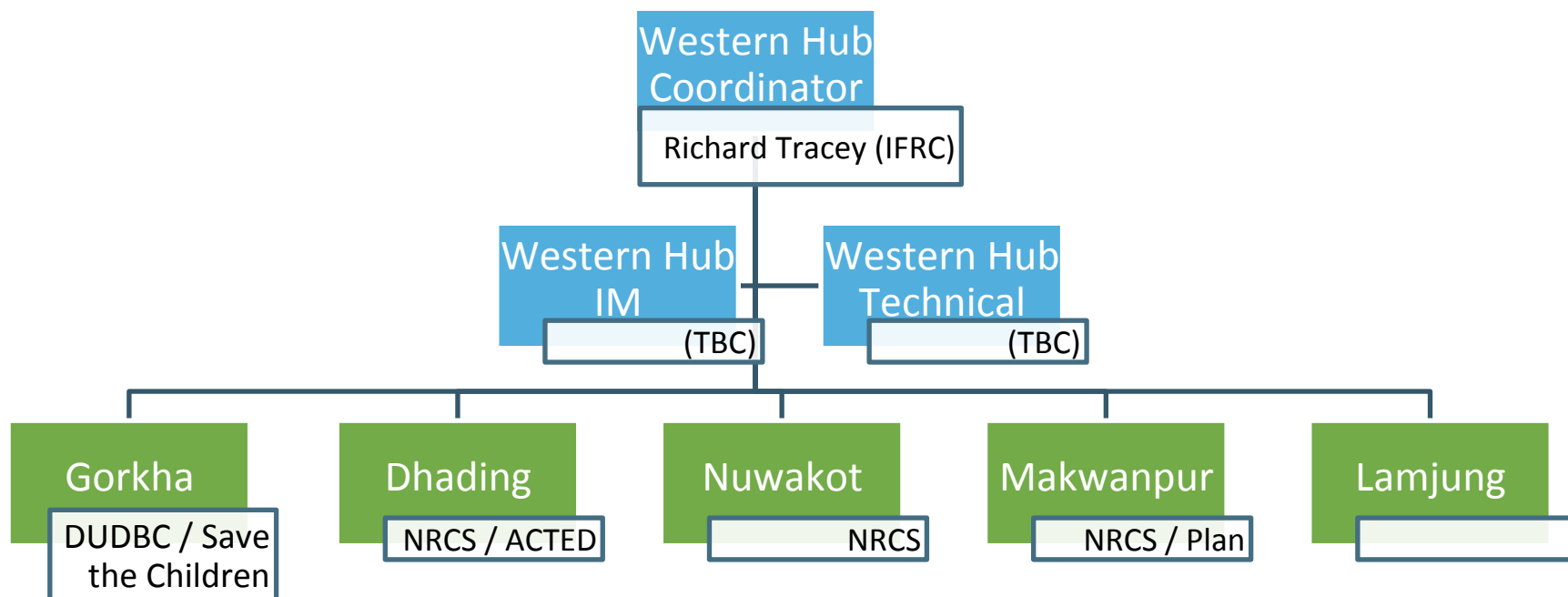
# Shelter Cluster Coordination: Kathmandu



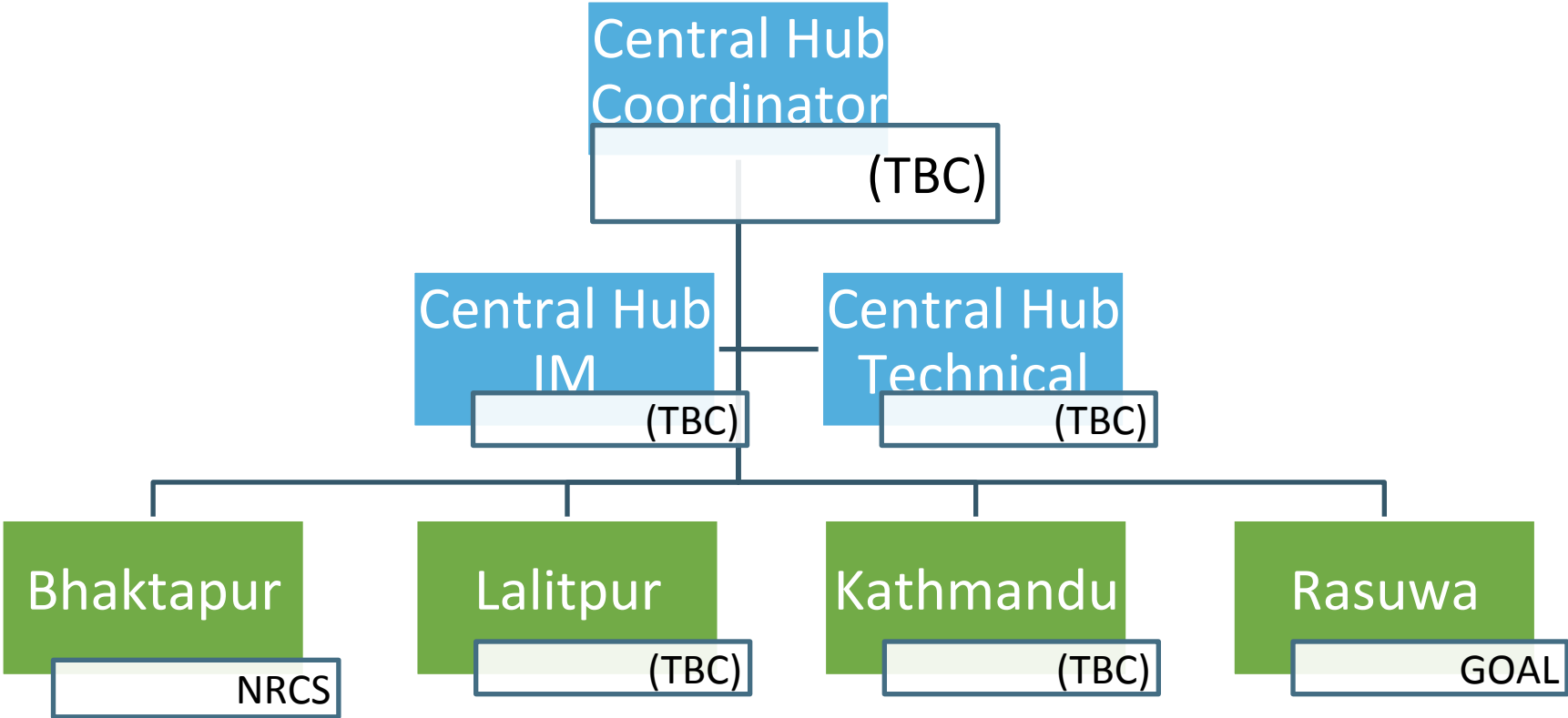
# Shelter Cluster Coordination: Hubs/ Districts



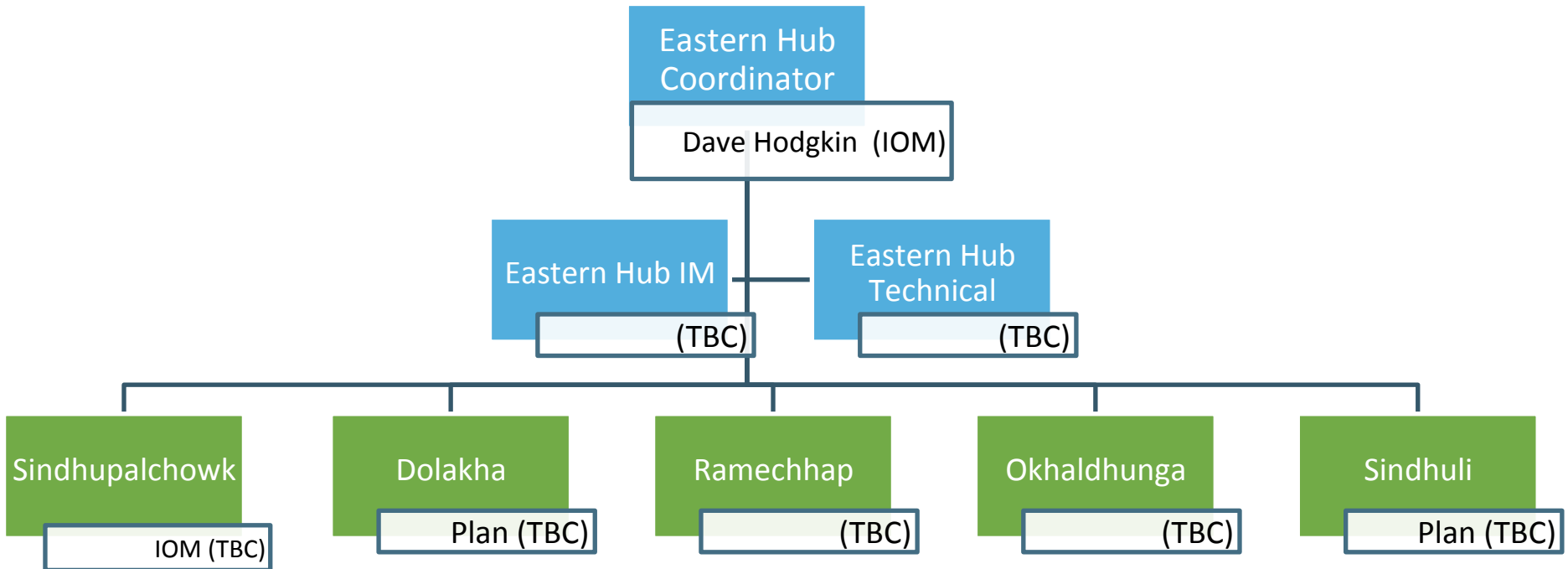
# Shelter Cluster: Western Hub



# Shelter Cluster: Central Hub



# Shelter Cluster: Eastern Hub



# Shelter Assessment: REACH



# Technical Update

- Weekly Technical Advisory Group Meeting
- Technical Working Groups
  - Capacity Building
  - Key messages (CwC WG, BBC Media Action)
  - Shelter Interventions
  - Cash Modalities
  - Contingency Planning (monsoon and winter preparedness)
  - Beneficiary Selection, Vulnerability



# Information Management Update

- Migration to Version 3 is already finished
- All agencies should report in the new format.
- Submissions on old template will be sent back including a copy of new template to be resubmitted.
- Submissions will due on Monday and Thursday

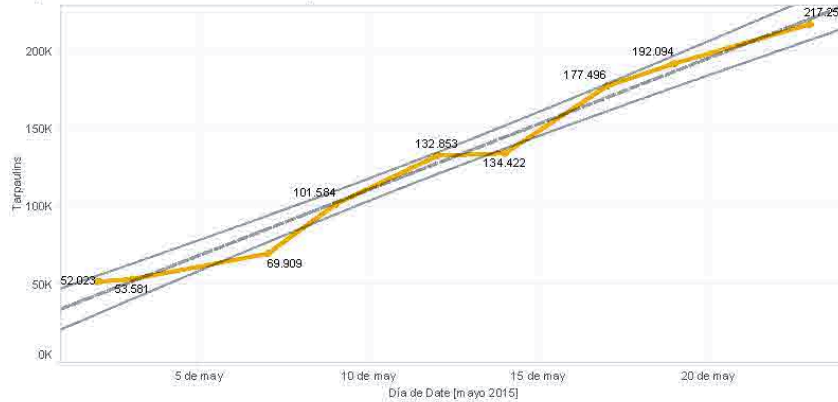


# National Figures

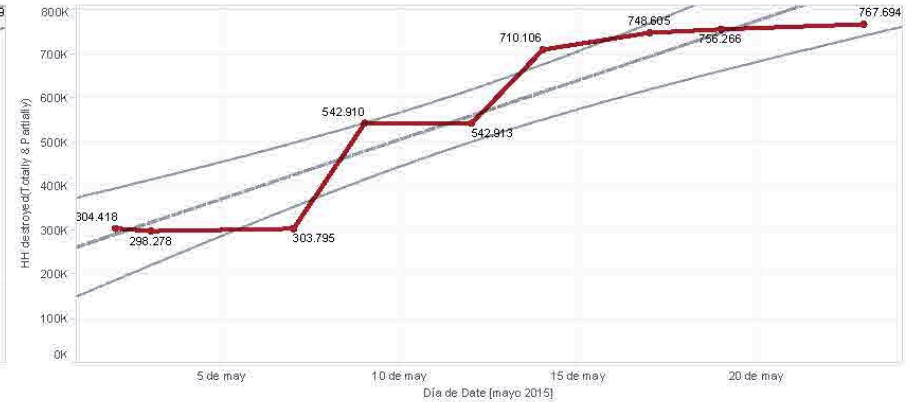
## National Summary

Status	Item					
	Blankets	CGI Bundle	Household kits (excluding tarpaulin)	Tarpaulin	Tents	Tool kits and fixings
Completed distributions	55,954		48,421	243,203	17,006	1,214
In pipeline (procurement/on..)	27,495	250	60,886	237,017	967	46,109
In-Country Stock/Ongoing ..	23,867		17,378	117,650	125	553
Planned (funded)	69		28,723	14,760	2,878	9,025
Planned (subject to funding)				5,994	820	1,579
<b>Grand Total</b>	<b>107,385</b>	<b>250</b>	<b>155,408</b>	<b>618,624</b>	<b>21,796</b>	<b>58,480</b>

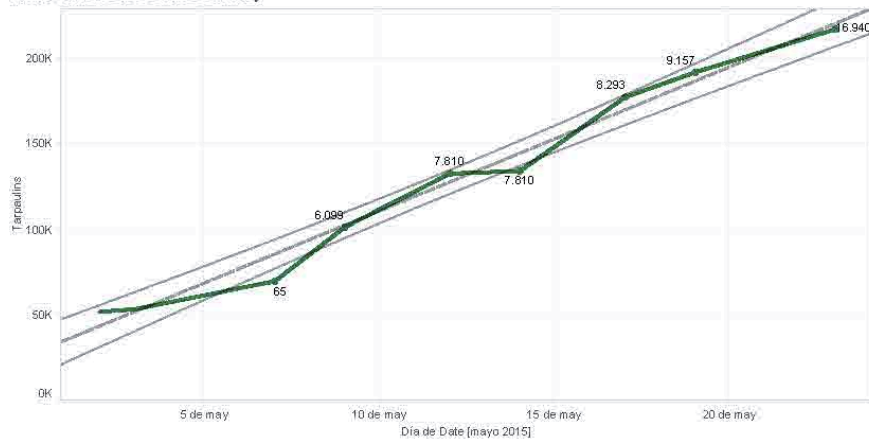
Tarpaulins Distributions until 23th May



Total Number of HH affected



Tents distributed until 23th May



District vs item distributed

District	Item				
	Blankets	Household kits (excluding tarp..)	Tarpaulin	Tents	Tool kits and fixings
Bhaktapur	1,600	1,612	7,558	617	
Dhading	6,401	6,777	22,038	1,195	30
Dotakha	4,578	1,718	23,103	54	
Gorkha	5,992	9,098	41,716	6,844	100
Kabhipalanchok	2,276	59	9,747	298	468
Kathmandu	3,077	5,476	15,118	690	
Lalitpur	271	2,065	9,561	398	
Makawanpur	389		3,498		
Muvakot	11,496	6,443	9,649	943	
Okhaldhunga	1,572	316	2,730	68	
Ramechhap	1,150	100	3,144	75	
Rasuwa	1,410	3,085	2,812	16	
Sidulipalchowk	1,000			2,660	
Sindhuli	736	1,736	5,089		
<b>Grand Total</b>	<b>41,948</b>	<b>38,487</b>	<b>155,761</b>	<b>14,058</b>	<b>598</b>

# Key issues / Looking ahead

- Working at District level:
  - National and district decision-making
  - Coordination mechanisms
  - Reporting templates
  - Different shelter packages, cash vs CGI
  - Targeting / beneficiary identification
- New customs procedures
- Porter service is up and running!



# Any Other Business

- Future meetings: Profile of SC Partners
- Next meeting Wednesday 3 June 2015, 11am

Friendly reminders:

- ✓ Check for updates on the website
- ✓ Send in your reports for SC tracking
- ✓ Register yourself on the mailing list

New Shelter Cluster Email for general correspondence:

[nepal@sheltercluster.org](mailto:nepal@sheltercluster.org)

<https://www.sheltercluster.org/response/nepal-earthquake-2015>

