

National Shelter Cluster Meeting

Kathmandu – DUDBC

10th June 11am



Agenda

1. Welcome
2. Information Management Update
3. REACH Shelter assessments
4. District Coordination
5. TWGs Update
6. Recovery
7. Other issues
8. AOB



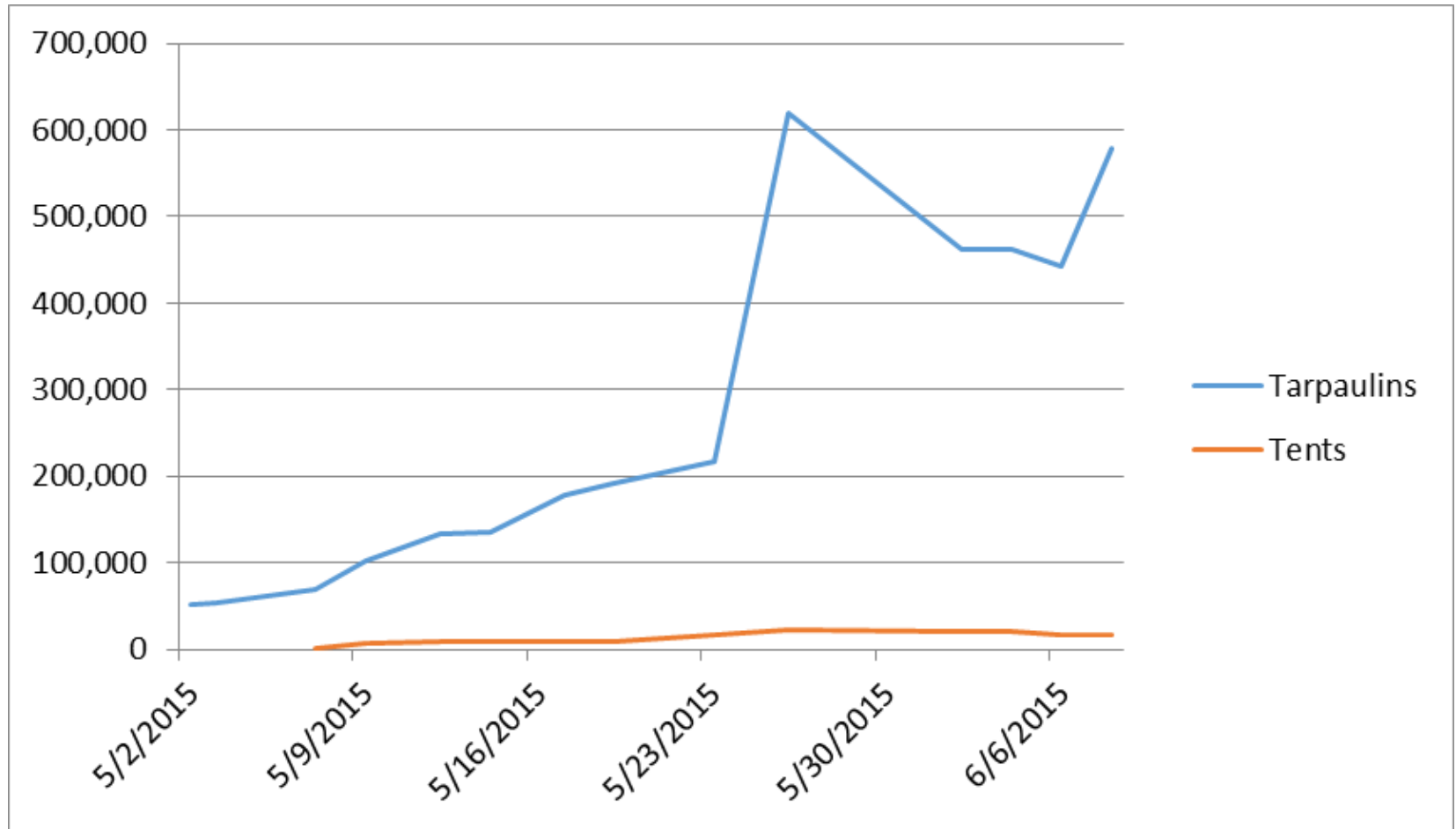
Information Management

- Dropbox for submission and access your latest submission
 - Please check for completeness
- Entire database available online
 - Link on our website
 - data hosted @ HDX (Humanitarian Data Exchange)

■ Updating website



Tarps and Tents Distribution



CGI Distribution: West Hub

Includes Completed, in pipeline and in-country/on going distributions



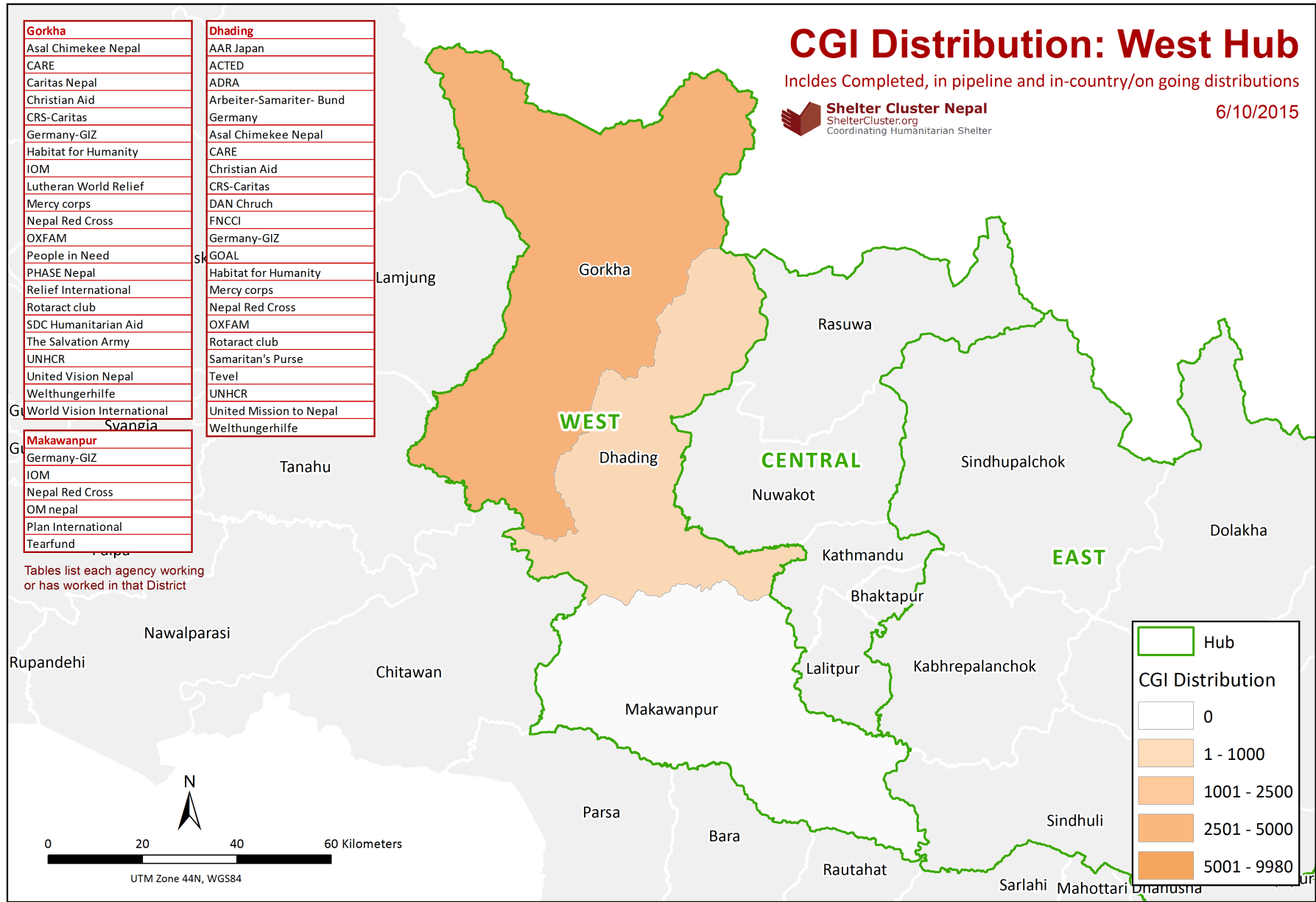
6/10/2015

Gorkha
Asal Chimekee Nepal
CARE
Caritas Nepal
Christian Aid
CRS-Caritas
Germany-GIZ
Habitat for Humanity
IOM
Lutheran World Relief
Mercy corps
Nepal Red Cross
OXFAM
People in Need
PHASE Nepal
Relief International
Rotaract club
SDC Humanitarian Aid
The Salvation Army
UNHCR
United Vision Nepal
Welthungerhilfe
World Vision International

Dhading
AAR Japan
ACTED
ADRA
Arbeiter-Samariter- Bund
Germany
Asal Chimekee Nepal
CARE
Christian Aid
CRS-Caritas
DAN Chruch
FNCCI
Germany-GIZ
GOAL
Habitat for Humanity
Mercy corps
Nepal Red Cross
OXFAM
Rotaract club
Samaritan's Purse
Tevel
UNHCR
United Mission to Nepal
Welthungerhilfe

Makawanpur
Germany-GIZ
IOM
Nepal Red Cross
OM nepal
Plan International
Tearfund

Tables list each agency working or has worked in that District

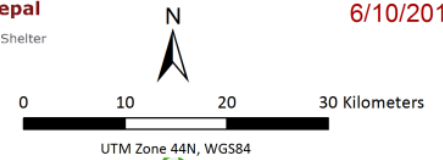


CGI Distribution: Central Hub

Includes Completed, in pipeline and in-country/on going distributions

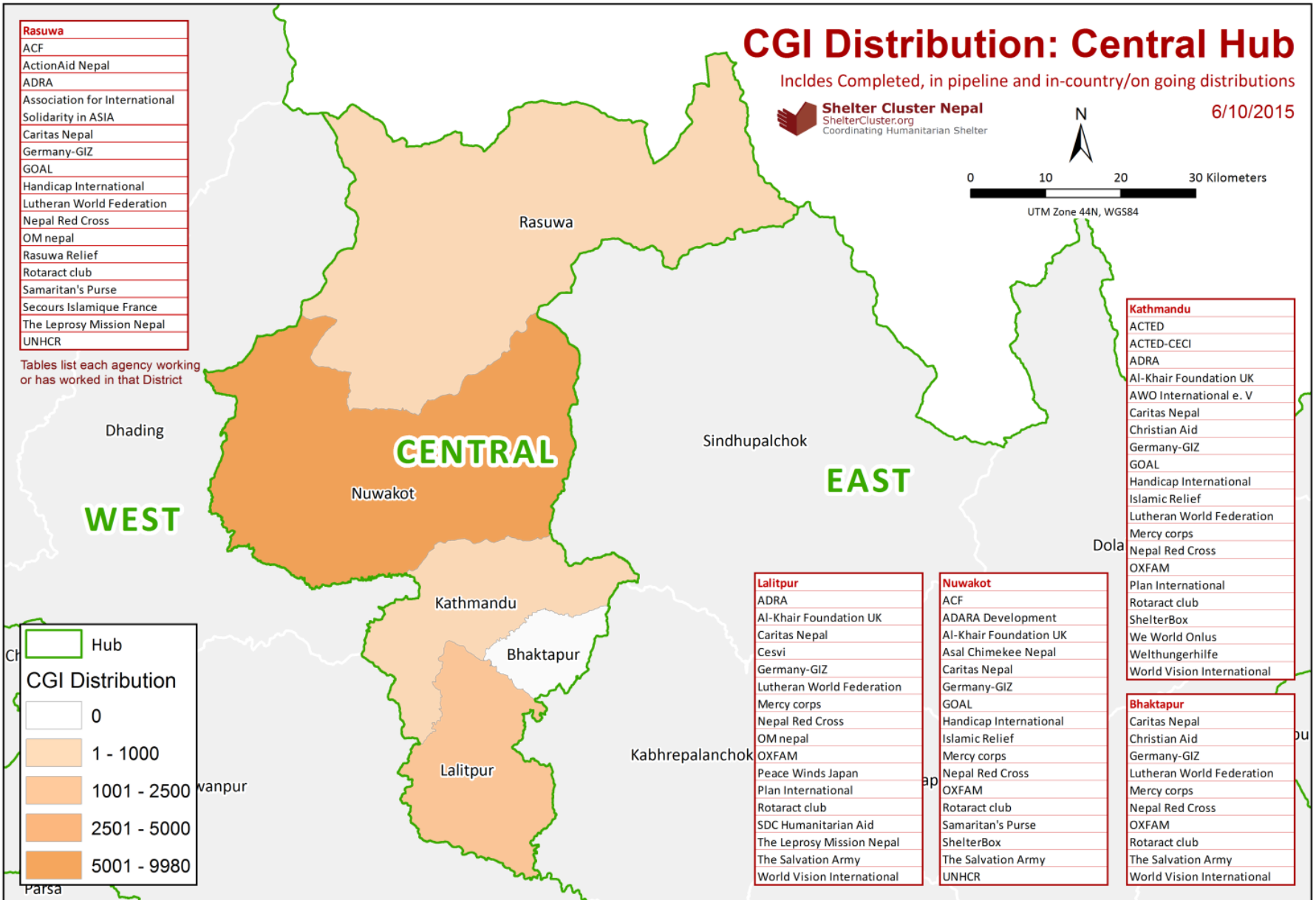
Shelter Cluster Nepal
ShelterCluster.org
Coordinating Humanitarian Shelter

6/10/2015



Rasuwa
ACF
ActionAid Nepal
ADRA
Association for International Solidarity in ASIA
Caritas Nepal
Germany-GIZ
GOAL
Handicap International
Lutheran World Federation
Nepal Red Cross
OM nepal
Rasuwa Relief
Rotaract club
Samaritan's Purse
Secours Islamique France
The Leprosy Mission Nepal
UNHCR

Tables list each agency working or has worked in that District



CGI Distribution
0
1 - 1000
1001 - 2500
2501 - 5000
5001 - 9980

Kathmandu
ACTED
ACTED-CECI
ADRA
Al-Khair Foundation UK
AWO International e. V
Caritas Nepal
Christian Aid
Germany-GIZ
GOAL
Handicap International
Islamic Relief
Lutheran World Federation
Mercy corps
Nepal Red Cross
OXFAM
Plan International
Rotaract club
ShelterBox
We World Onlus
Welthungerhilfe
World Vision International

Lalitpur
ADRA
Al-Khair Foundation UK
Caritas Nepal
Cesvi
Germany-GIZ
Lutheran World Federation
Mercy corps
Nepal Red Cross
OM nepal
OXFAM
Peace Winds Japan
Plan International
Rotaract club
SDC Humanitarian Aid
The Leprosy Mission Nepal
The Salvation Army
World Vision International

Nuwakot
ACF
ADARA Development
Al-Khair Foundation UK
Asal Chimekee Nepal
Caritas Nepal
Germany-GIZ
GOAL
Handicap International
Islamic Relief
Mercy corps
Nepal Red Cross
OXFAM
Rotaract club
Samaritan's Purse
ShelterBox
The Salvation Army
UNHCR

Bhaktapur
Caritas Nepal
Christian Aid
Germany-GIZ
Lutheran World Federation
Mercy corps
Nepal Red Cross
OXFAM
Rotaract club
The Salvation Army
World Vision International

CGI Distribution: East Hub

Includes Completed, in pipeline and in-country/on going distributions

6/10/2015



Sindhupalchok
ACTED
ActionAid Nepal
ADRA
Al-Khair Foundation UK
Arbeiter-Samariter- Bund Germany
AWO International e. V
CARE
Caritas Nepal
CECI
Christian Aid
Concern Worldwide
Germany-GIZ
GOAL
Islamic Relief
Lutheran World Federation
Malteser International
MedAir-MissionEast
Mercy corps
Nepal Red Cross
OXFAM
Peace Winds Japan
People in Need
PHASE Nepal
Plan International
Polish Humanitarian Action
Relief International
Rotaract club
Rural Reconstruction Nepal
Save the Children
ShelterBox
Solidarities International
The Salvation Army
UNHCR
United Vision Nepal
We World Onlus
Welthungerhilfe
Women Development Advocacy Center
World Vision International

Kabhrepalanchok
ADRA
Al-Khair Foundation UK
Caritas Nepal
CCS Italy - Terres des Hommes Italy
CECI
DCWC - Namaste Nepal (CZ)
Germany-GIZ
Habitat for Humanity
Malteser International
Mercy corps
Nepal Red Cross
Plan International
Relief International
Rotaract club
SDC Humanitarian Aid
Terre des hommes
Tevel
We World Onlus

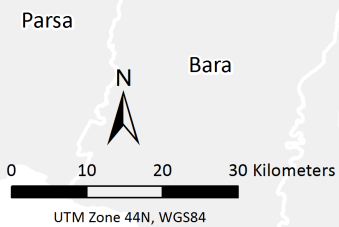
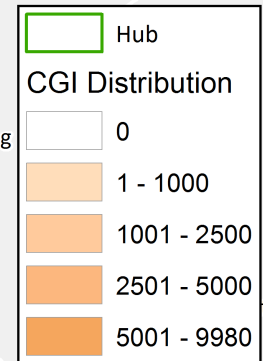
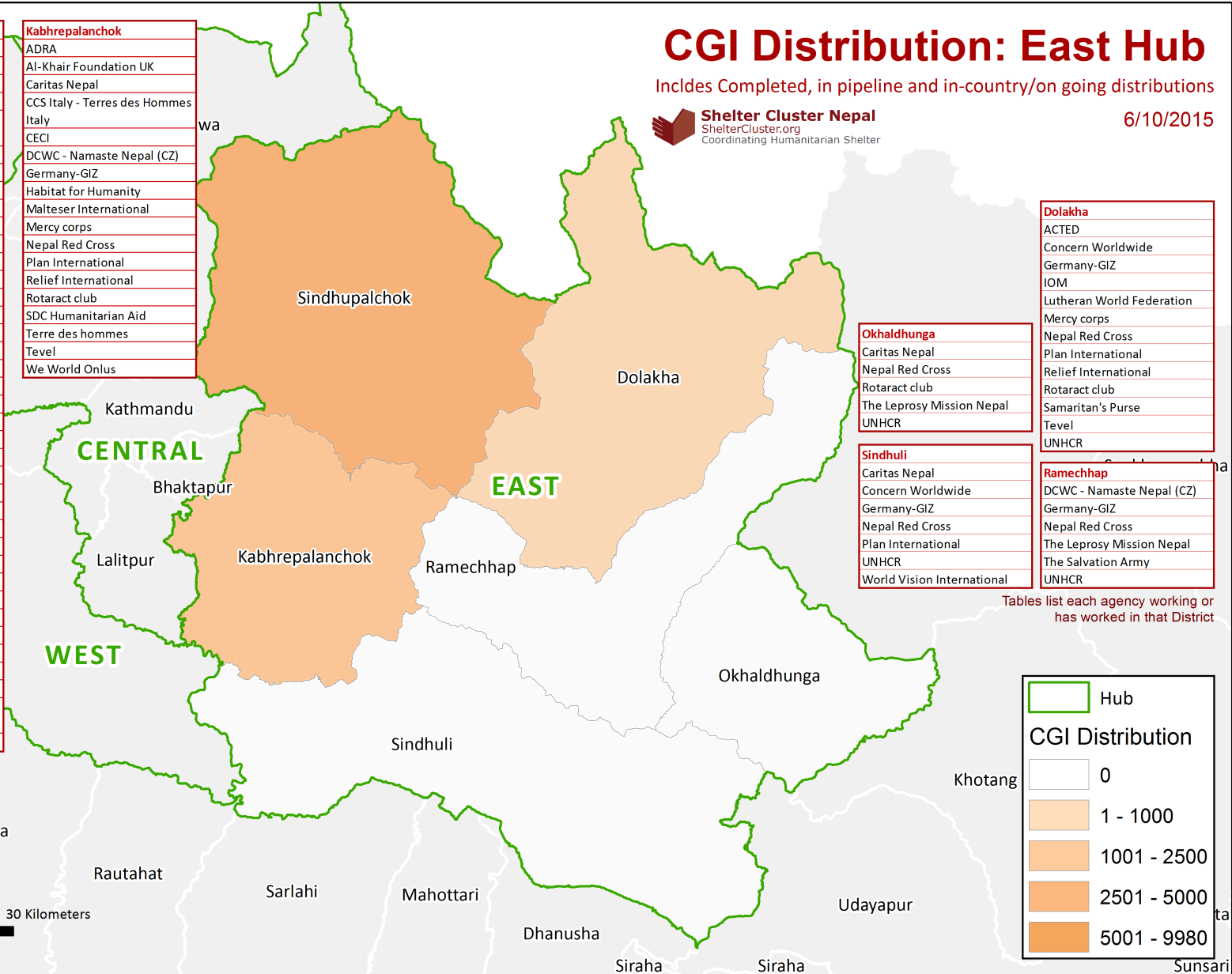
Okhaldhunga
Caritas Nepal
Nepal Red Cross
Rotaract club
The Leprosy Mission Nepal
UNHCR

Sindhuli
Caritas Nepal
Concern Worldwide
Germany-GIZ
Nepal Red Cross
Plan International
UNHCR
World Vision International

Dolakha
ACTED
Concern Worldwide
Germany-GIZ
IOM
Lutheran World Federation
Mercy corps
Nepal Red Cross
Plan International
Relief International
Rotaract club
Samaritan's Purse
Tevel
UNHCR

Ramechhap
DCWC - Namaste Nepal (CZ)
Germany-GIZ
Nepal Red Cross
The Leprosy Mission Nepal
The Salvation Army
UNHCR

Tables list each agency working or has worked in that District

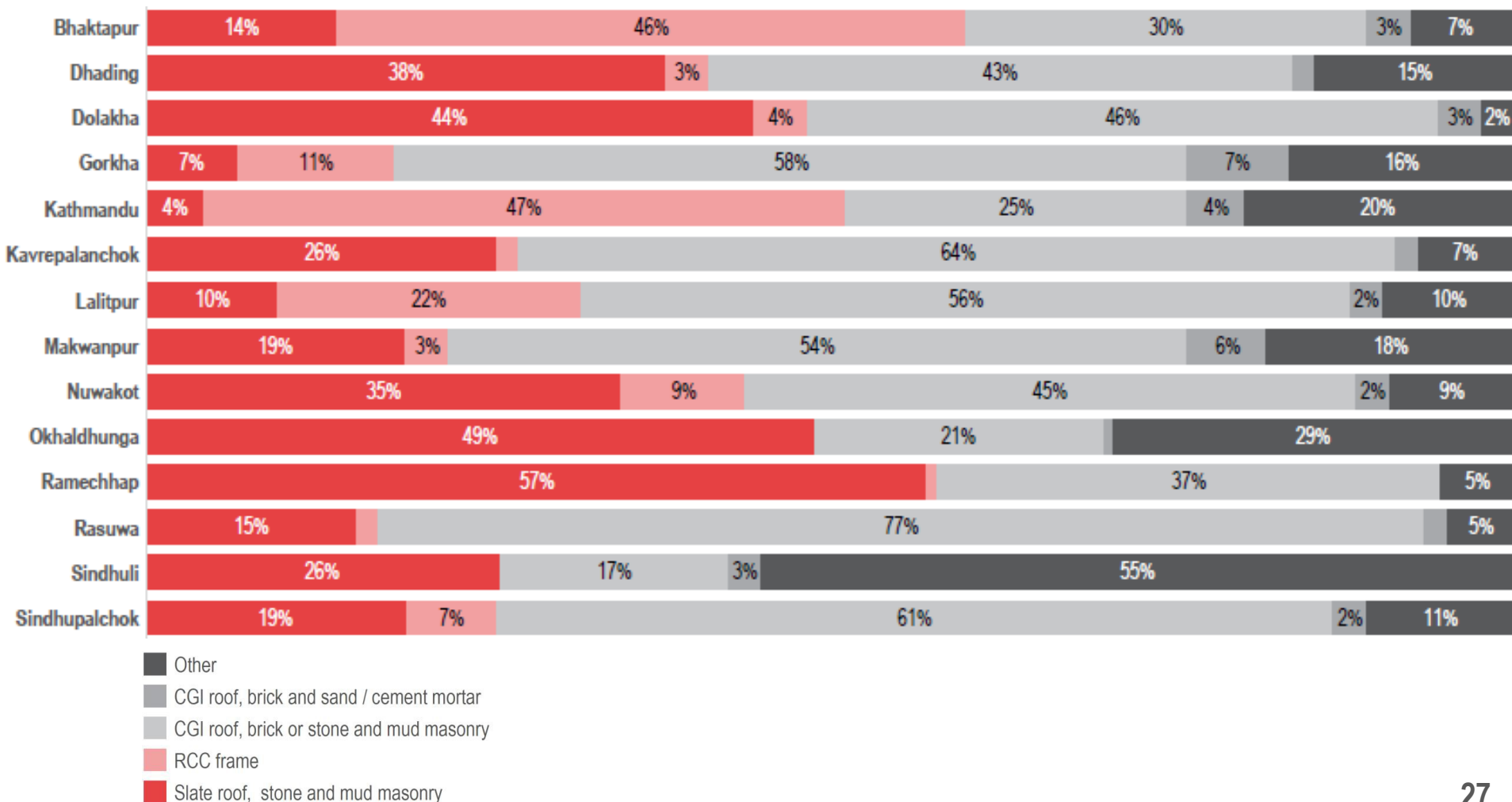


REACH - Shelter Assessment

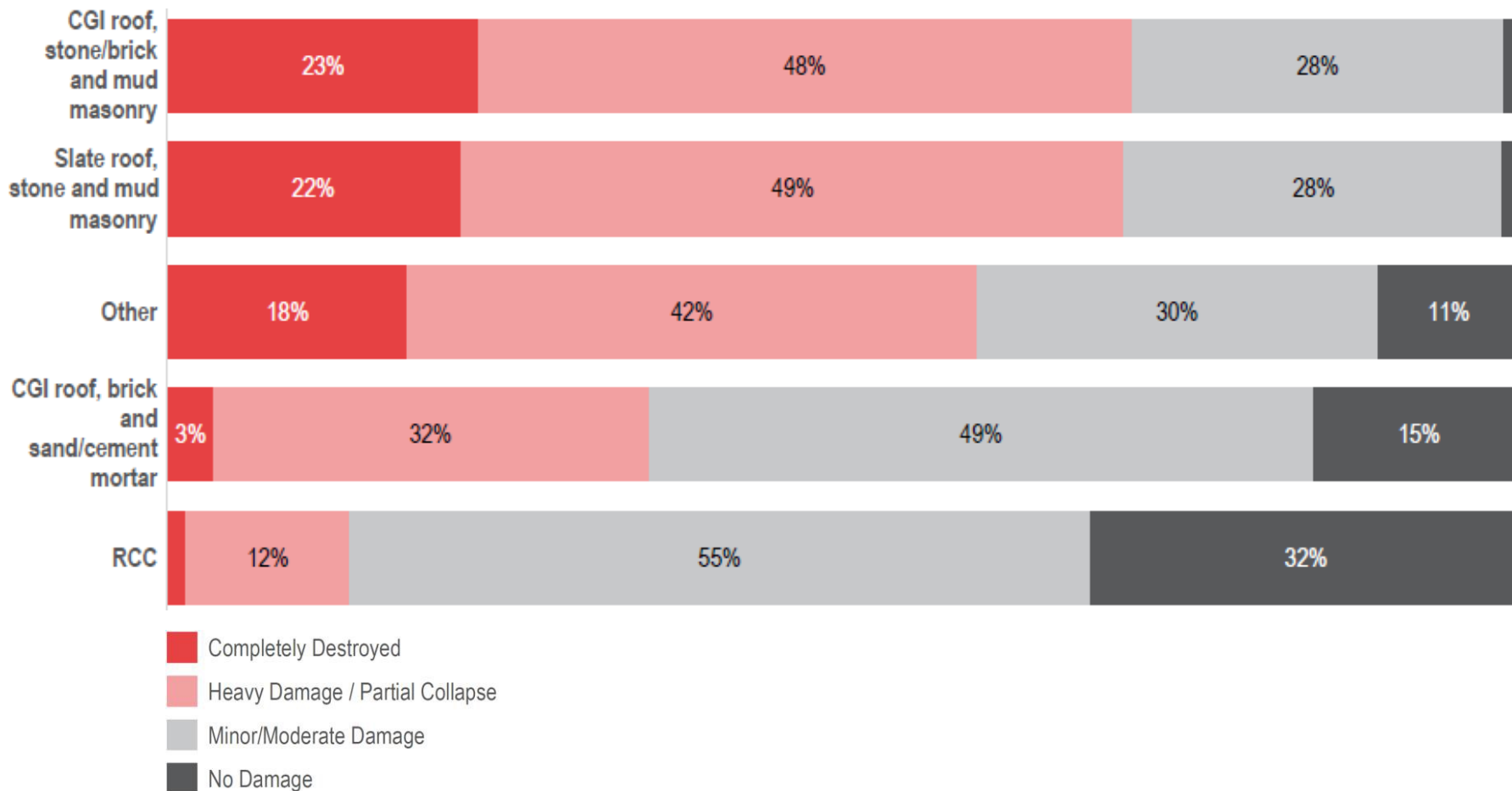
- Preliminary findings presentation was held Sunday 7th June
- Review process ended Tuesday 9th June
- Final report expected around 17th June



HOUSING TYPOLOGY BY DISTRICT



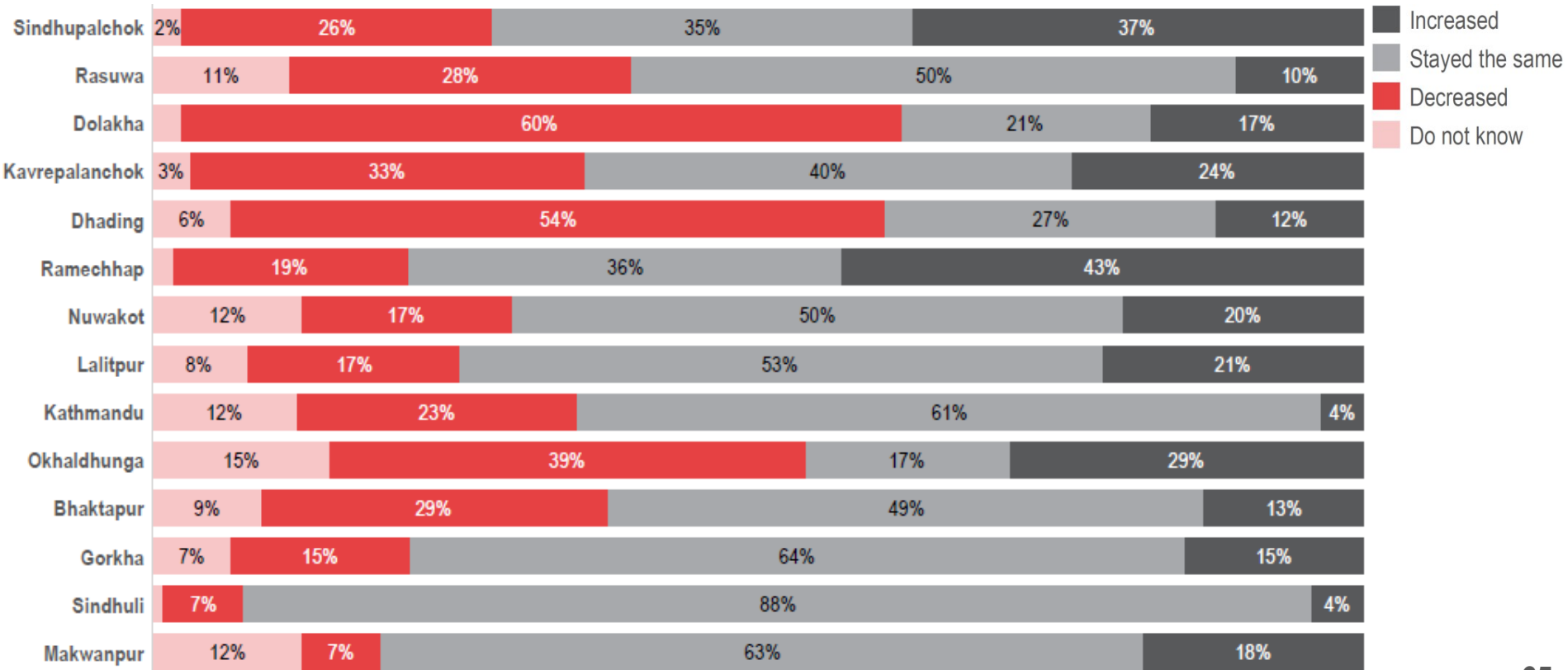
DAMAGE BY TYPOLOGY*



* It should be taken into account that all sub-set data has a reduced level of representativeness, depending on the number of entries per sub-set.

EFFECT ON WATER QUANTITY

24% of all households reported that the quantity of their drinking water had decreased since the crisis



Eastern Hub - Chataura

- Coordination – 6 districts under
 - **New hub coordinator**
 - Dave Hodgkin coord4.nepal@sheltercluster.org 9801108460
 - Focus on strengthening focal points at districts
 - still seeking agencies to commit to being focal points in some districts
- Tarpaulins – temporary shelter
 - Some remaining areas in need of assistance, focus on north - need for contingency stocks for high risk areas before monsoons begin
- CGI and fixings planning
 - Need to prioritise northern areas that may soon become inaccessible
 - Very little actual coverage to date
 - Request for cluster to develop a template to track realistic CGI pipeline in next 3-4 weeks - similar to Gorkha operational planning
 - District variations in relationship between 15,000 assistance and Shelter assistance top ups



Eastern Hub Chatuara

Sindhupalchowk Shelter Package update

- 10,000 NPR worth of additional materials assistance in cash or in-kind (CGI, Shelter tool kits and fixings). Where necessary at VDC level, this assistance can be targeted
- Supplemental package will not affect the government entitlement to the 15,000 cash assistance - blanket coverage
- It was recognised that in highly impacted areas, blanket distribution may be the only acceptable solution
- MoU in place



Western Hub – Gorkha

- Gov. has distributed cash in 27 VDCs
- Letter of Intent replaced MoU for Temporary shelter. Acceptable to all - day 5 of 3 week deadline. (*this Letter of Intent is being adapted at National level*)
- CGI being distributed to the 10 most remote VDCs by helicopter. Will be completed within a week
- CGI donated in-kind from IoM alleviated supply issues for CGI
- Good coordination with Cash Coordination Working group supported swift mobilization of cash distributions



Western Hub – Gorkha

Gorkha Shelter Package update

- SC Agencies - CGI and or CASH in VDCs were government are not distributing 15,000
- 15th June deadline Letter of Intent - however agencies to continue past this deadline
- 15,000 blanket cash from government for the remaining VDC not covered by SC Partners - however once the cash is available government are distributing based on VDC request.



Western Hub – Dhading

- Shelter Cluster Focal Point established (ACTED)
- +100,000 Tarpaulins distributed
- CGI distributions begun in two VDCs
- 7,000 CGI in pipeline from IOM

Challenges

- Official gov. assessment data has not been shared with partners
- Some technical issues regarding MoUs for CGI.
- Pipeline and procurement delays for CGIs



Western Hub – Dhading

Shelter Package Dhading

- SC Agencies -CGI only - no cash from partners- 16,000 HH in total 10/47 VDC capacity approx.
- 2nd July deadline MoU
- 15,000 blanket cash from government for the-remaining VDC not covered by SC Partners
- Government blanket coverage in VDCs - most vulnerable VDC



TWGs Update


- Technical Assistance and Training for Recovery
- Communicating with Communities
- Shelter Specifications / Technical Standards for Reconstruction
- Cash, Markets, and Livelihoods
- Contingency Planning and Preparedness
- Accountability, Targeting, and Inclusion



Planning for Recovery

- Mapping interest / resources long term – housing reconstruction
 - Technical Assistance / training
 - Awareness Raising / Communications
 - Supply chain
- Cluster consolidated planning contributing to wider process
- Draft strategy preparation today



Western Hub Gorkha, Dhading, Makwanpur	Central Hub Bhaktapur, Lalitpur, Kathmandu, Rasuwa, Nuwakot	Eastern Hub Sindhupalchowk, Dolakha, Ramechhap, Okhaldhunga, Sindhuli, Kavre
Caseload: 152,337 Households	Caseload: 212,817 Households	Caseload: 273,562 Households
Save the Children (Gorkha)	Red Cross Movement (All Districts)	IOM (Sindhupalchowk, Dolakha)
Red Cross Movement (All Districts)	Save the Children (Nuwakot)	CARE (Sindhupalchowk)
IOM (Gorkha)	IOM (Kathmandu Valley)	Red Cross Movement (All Districts)
CARE (Dhading and Gorkha)	UN Habitat (Lalitpur, Kathmandu, and Bhaktapur)	Habitat for Humanity (Kavre)
CRS (Gorkha)	Handicap International (Rasuwa and Nuwakot)	UN Habitat (Sindhupalchowk and Dolakha)
World Vision (Gorkha)	Cordaid (Rasuwa)	Medair (Sindhupalchowk)
Acted (Dhading)	World Vision (Lalitpur, Bhaktapur and Kathmandu)	Save the Children (Sindhupalchowk and Dolakha)
Good Neighbours (Gorkha)	Plan (Lalitpur)	SDC (Kavre)
Tearfund (Makwanpur)	GOAL (Rasuwa)	Concern (Sindhuli and Dolakha)
SDC (Gorkha)	Good Neighbours (Lalitpur and Kathmandu)	Plan (Dolakha)
Plan (Makwanpur)	MinErgy (Lalitpur, Kathmandu, and Bhaktapur)	World Vision (Sindhupalchowk and Sindhuli)
United Mission to Nepal (Dhading)	NSET (Pilot)	Acted (Dolakha)
Aussie Action Abroad (AAA), Architects Without Frontiers Australia (AWF) (Gorkha)	Solidarités International (Nuwakot)	Relief International (Dolakha)
International Nepal Fellowship (Gorkha)	Build Change	Mennonite Central Committee (Okhaldhunga)
Build Change		Namaste Nepal (Ramechhap and Kavre)
		Solidarités International (Sindhupalchowk and Dolakha)
 Shelter Cluster Nepal ShelterCluster.org Coordinating Humanitarian Shelter		Build Change

Photos - Very Helpful!

- Very important resource from field teams
- Dropbox, four categories:
 - Pre EQ Housing Typologies
 - EQ Damage
 - Temporary Shelter
 - New Construction



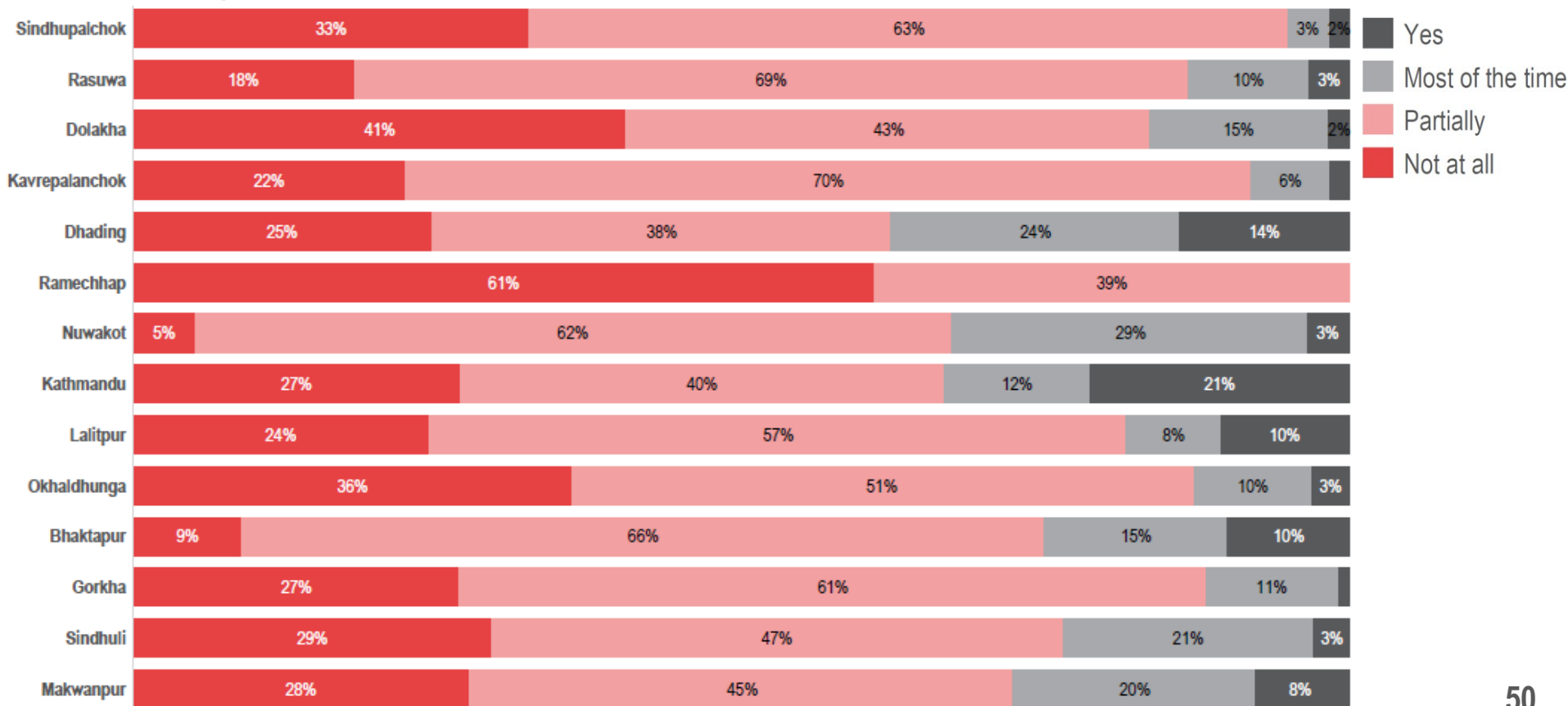
Other Issues

- CGI / customs update
- WASH/Shelter cluster collaboration
- Contingency planning for monsoon
- District level mapping



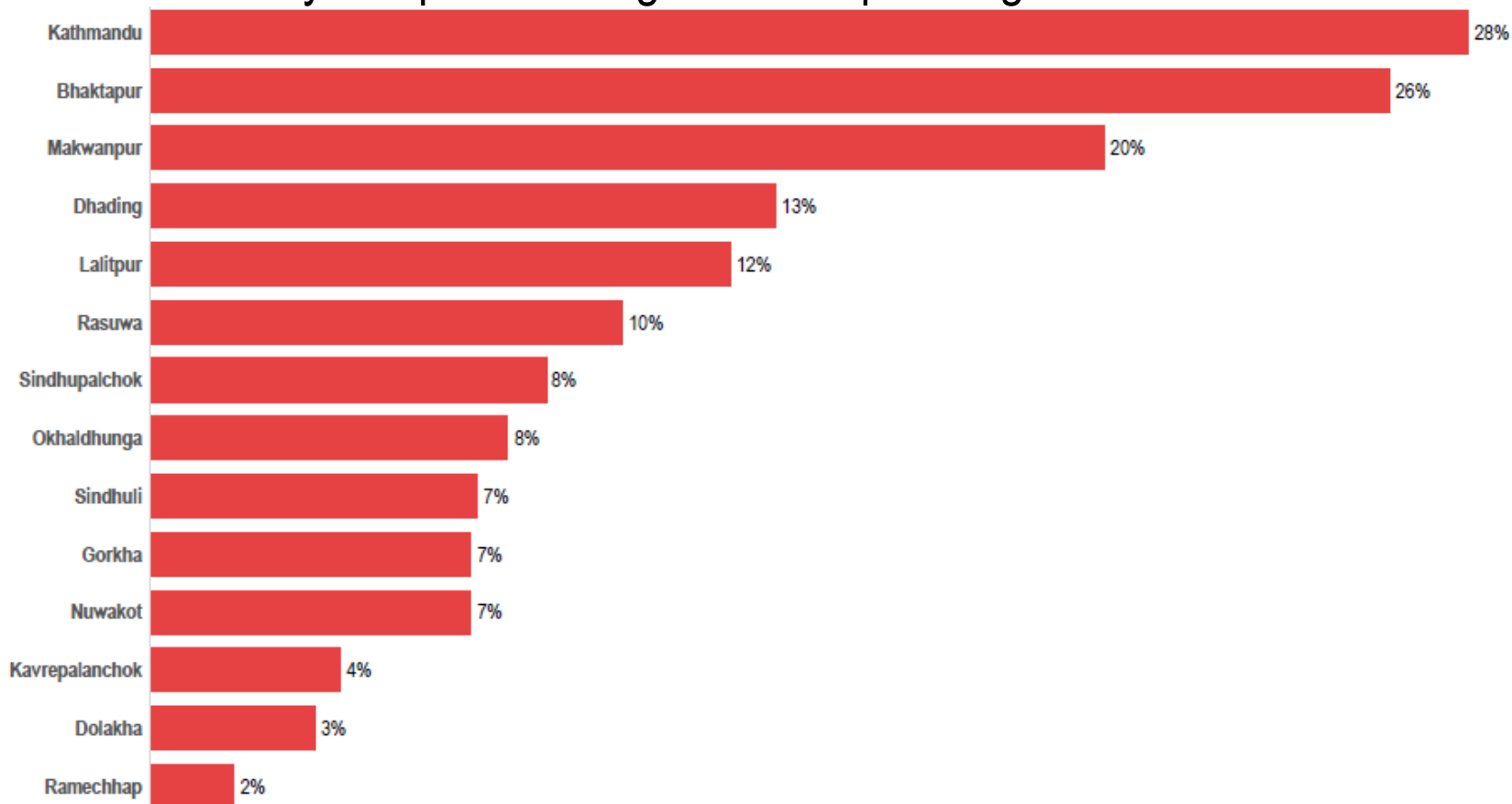
CURRENT WEATHER PROTECTION

25% of all households in the priority districts reported that they do not feel protected at all from current weather conditions



MONSOON SEASON PROTECTION

Only **21%** of all households in the priority districts reported that they feel protected against the upcoming monsoon season



Any Other Business

- Future meetings: Profile of SC Partners
- Next meeting Wednesday 17 June 2015, 11am

Friendly reminders:

- ✓ Check for updates on the website
- ✓ Send in your reports for SC tracking
- ✓ Register yourself on the mailing list

New Shelter Cluster Email for general correspondence:

nepal@sheltercluster.org

<https://www.sheltercluster.org/response/nepal-earthquake-2015>

