



SITUATION REPORT #3

Monday 31st August 2105

1 Introduction

1.1 Shelter cluster coordination team objectives

- To identify the current needs of the affected population
- To build and share a data base of key shelter actors responding to the 2015 floods
- To track the response of shelter partners and from this identify gaps as well as emerging constraints, and opportunities.
- To support development of a harmonized strategic approach
- To promote shelter standards and provide technical support as required
- Provide representation and advocacy
- Support training and capacity building as possible

1.2 Purpose of this report

- To report on the current needs and response
- Indicate shelter emergency and recovery approaches
- Report on any other key issues
- To record the activities of the Shelter Cluster (SC) and Shelter Cluster Coordination Team (SCT).

1.3 Cluster arrangements

The regional coordinators (IFRC) and the national coordinator (UNHCR) cooperation mechanism is functioning well with joint responses to information requests, inputs to cash working group, and development of recovery approaches.

- The floods response Shelter Cluster Meeting is being conducted at 9 am every Wednesday at the UNHCR office until further notice, which in the event of the wider national forum will finish by 10 am, so the wider meeting can convene at its usual time/day.
- All agencies with an interest in responding to the floods are welcome to attend either or both meetings.
- The IFRC team is coordinating all shelter activities in Chin, Magway, Sagaing, Bago, Mandalay, Yangon and Ayeyarwady
- The National Shelter Cluster team is coordinating shelter responses in other areas, principally Rakhine

1.4 Shelter focal points

Several agencies have agreed to act as shelter focal points in key townships. Discussions on what this would involve are ongoing.

2 Important Preface to needs analysis

The coordination team is able to supply reasonable quality information regarding the number of **destroyed houses** and the emergency shelter response based on government damage data that has been triangulated as much as possible.



This does not identify the needs of persons with significantly damaged houses and the extent of this damage remains unclear.

It also does not identify the needs of **households who remain displaced.**

Additionally some community members have expressed the desire to relocate to safer locations and this includes households who are not currently in totally destroyed houses.

Readers are again requested to remember that the destroyed houses data is only identifying a part of the shelter needs of the flood affected population.

3 Summary of current needs

3.1 Assessments results

The coordination team has data from the national Government (MoSWRR) and has been cross checking this as much as possible with agency and UN reports including Mira. This information has been assembled at township level and a summary table for states and regions follows.

		Destroyed houses		Partial damage	Immediate response				Gaps Destroyed	Gaps Damaged
Organization		RRD	RRD	RRD	Basic shelter kit	Single tarpaulin	Tents	(excluding single trap)	d less total response	
Date		15th August	24th August	24th August						
	Chin	2,306	2,666	1,053	332	477	1,000	1,332	-1,334	Not known
	Sagaing	1,685	2,106	65,801	3,118	983	1,000	4,118	2,012	Not known
	Magway	464	464	67,831	1,844	120	249	2,093	1,629	Not known
	Ayeyarwady	345	353	107,905	235	681	0	235	-118	Not known
	Bago	142	215	66,570	0	30	0	0	-215	Not known
	Shan	103	127	456	54	0	0	54	-73	Not known
	Mandalay	99	255	4,376	17	213	0	17	-238	Not known
	Yangon	27	0	11	19	0	0	19	19	Not known
Totals		5,171	6,186	314,003	5,619	2,504	2,249	7,868		
Notes										
Partial damage includes significant damage										
Basic shelter kit typically includes 2 tarps, rope and a hammer or knife										
Single tarpaulins not included										

Comments:

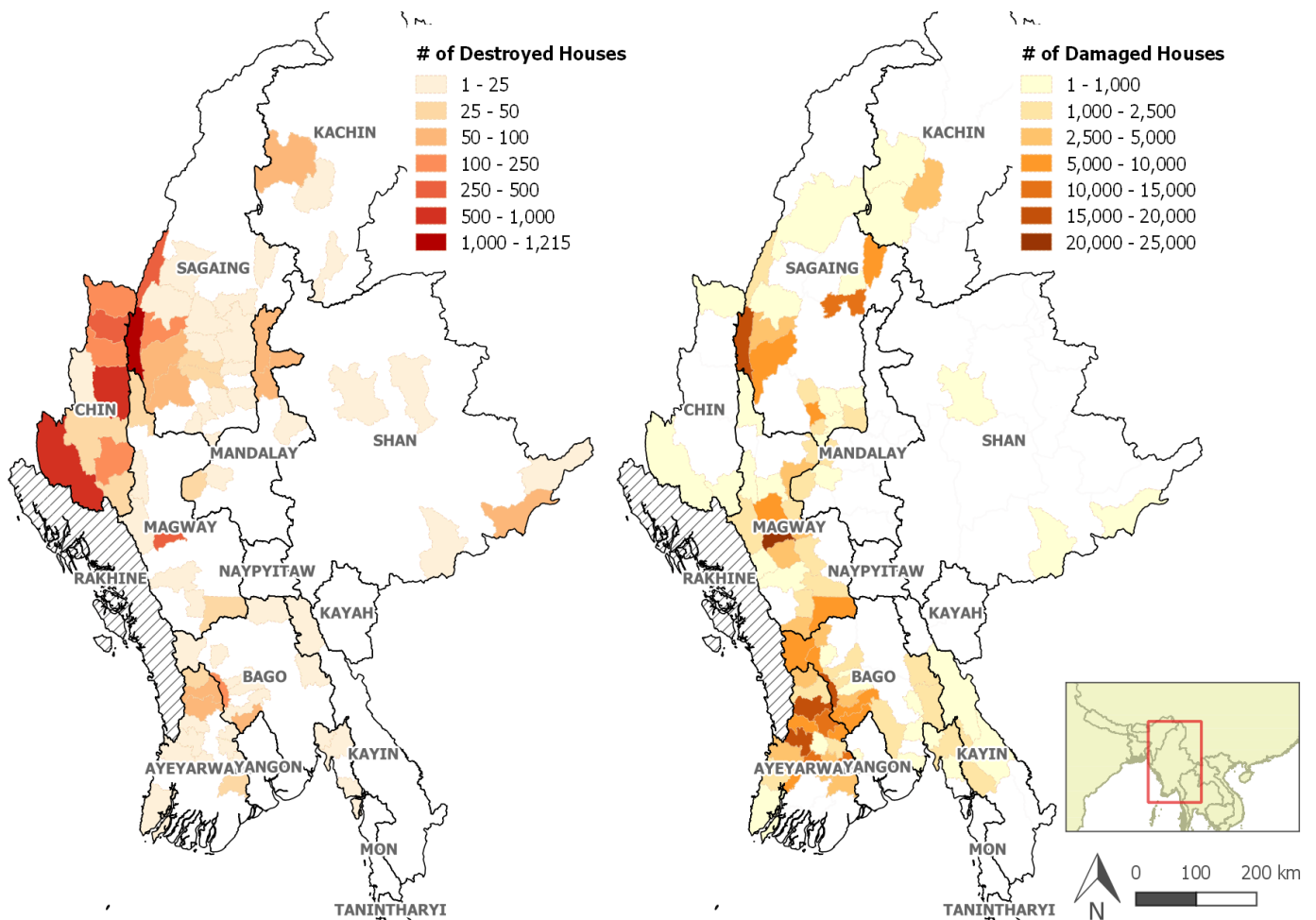
- On the basis of destroyed houses only, the emergency shelter response in Chin state appears to be significantly less than required.
- It can be seen that in Sagaing and Magway there appears to be an over supply of emergency shelter support but SCT believes this demonstrates the issue that agencies are needing to respond to HH with houses that are not in the destroyed category.
- There are very large numbers of partially damaged houses. It can be seen that in most areas these numbers far exceed the destroyed numbers. In Sagaing and Magway the cumulative figure of displaced people is a little bit over the total number of houses affected, a possible explanation being that all people evacuated flooded houses, and all flooded houses are considered damaged. In Chin this is not the case and this may be due to the houses that were affected were affected severely or that there are challenges in obtaining damage data from Chin.



- Between the two Govt reporting periods 15th August to 24th august he numbers of destroyed houses recorded have trended slowly upwards in most areas

3.2 Key affected areas

The following graphic shows damage densities for destroyed and damaged houses respectively with the number of destroyed houses greater in Chin and Western Sagaing but greater damage intensity in the southern areas



3.3 Priority needs

Provision of emergency shelter materials is an important need in the first weeks of response however as the main flooding began mid July it is now 6 weeks since the onset and most households will hopefully be finding **short term** emergency shelter solutions.



The focus is moving towards early recovery which is appropriate however concerns remain regarding the needs of those with seriously damaged houses or the needs of displaced households, many of whom are in temporary evacuation centers.



Village household's inundated in Ayeyarwady. Photo: IFRC

3.4 Displaced persons

The number and status of persons displaced from their homes remains uncertain. SCT is initiating field trips and more importantly will request shelter partners to provide more detailed information via reporting templates to be shared within the next several days. (See details below).



Roadside makeshift camps Ayeyarwady. Photo: IFRC

3.5 Other sector needs

There has been some consensus – in particular in the Cash Working Group on four priority sectors being: Shelter/NFI, WaSH, Food and Agriculture. The ability of households to resume viable livelihoods remains a key concern.



4 Summary of current shelter response

4.1 Emergency shelter

- As per the table in 3.1 above INGO activity is underway and ongoing including shelter kits, tarps and tents.

5 Reporting

5.1

The above paragraphs make it clear that better quality information will greatly assist the SCT provide information to assist all stakeholders to respond adequately. Accordingly two reporting templates have been developed and are being reviewed by key partners.

1. Assessment template designed to gather information at township level in three key aspects.

- The condition of housing stock (Severe Moderate or Minor damage)
- Need for new (additional) housing for HH that may need/desire to move to a safer location
- Households that are currently displaced

This information could be filled in by any actor including SCT analysis of govt/NGO data.

2. 4w reporting template designed to gather information across the complete range of possible shelter responses including emergency shelter, support for HH in evacuation/temporary shelters, recovery shelter etc

This will hopefully be filled in by any implementing partner or again by SCT on the basis of analyzing data from non INGO sources.

6 Recovery

6.1 Cash working Group

As previously stated there seems to be a strong inclination towards the provision of cash programming.

A working group led by WFP has worked on a cash expenditure basket focused on four priority areas being of Shelter/NFI, WaSH, Food and Agriculture/Livelihoods. This has been suggested as an immediate emergency response tool.

The working group is also developing some cash guidelines and this will include a suggested approach to recovery cash distribution whereby the same priority sectors are addressed but on the basis of low medium or high household impact in each sector. A draft proposal is expected within next days.



6.2 Shelter partner recovery response

The shelter 4W reporting formats outlined in paragraph 5.1 will cover all anticipated shelter recovery modalities and differentiate: underway, planned, approved and pipeline activities and it is hoped that this will provide a clearer picture.

7 Shelter Cluster Flood Coordination Team activities

7.1 Field visits

Access to Chin state is still very difficult however planning continues for a coordinator to travel there as soon as possible. There are also plans to visit Ayeyarwady.

7.2 Cluster meetings

There will be a weekly shelter cluster meeting at UNHCR (9am Wednesdays) until further notice.

7.3 Shelter partners

Key partners continue to be identified and a contact list has been distributed. Renewed efforts are being made to reach Myanmar NGO and those partners not attending shelter meetings.

7.4 Information management

An Information manager from British Red Cross has joined the team for one month.

7.5 Assessments

The Coordination Team does not have the capacity for detailed assessment however inputs are being made to assessments planned and underway by other agencies and it is strongly hoped that the reporting templates will provide much needed information.

7.6 Strategy

Agencies appear to be thinking about recovery and thinking around strategy has been discussed at the shelter meetings. SCT is developing a framework for further input.

7.7 Technical and programmatic support

The coordination team is identifying existing technical information that can be linked on the web page. This will include some best practice suggestions regarding vulnerability criteria, beneficiary selection, material specifications etc.



7.8 Website

A floods response page has been added to the shelter cluster web portal: <http://www.sheltercluster.org/response/myanmar-floods-2015>

This site will be further populated in next days.

7.9 Inter cluster coordination

The coordinators have attended key meetings including HCT and ICCG and have met with key sector leads particularly regarding to potential for a harmonized multi sector approach to cash programming.

The team is working very closely with the UNHCR National Coordinator.

7.10 Feedback

The Shelter Coordination Team welcomes comment and feedback. If you can add to this report or suggest alterations/additions/corrections please contact the Sub-national Coordinators.

7.11 Contact details

National Shelter Cluster Coordinator

Edward Benson (UNHCR) benson@unhcr.org

Sub National (Non Rakhine Area) Coordinators

Arnaud de Coupigny coord1.myanmar@sheltercluster.org ph +95 (0) 92 6239 7326

Steve Barton coord2.myanmar@sheltercluster.org ph +95 (0) 92 6311 4051

Floods Response Information Manager

Bruno Raimbault im.myanmar@sheltercluster.org ph +95 (0) 92 6425 4662