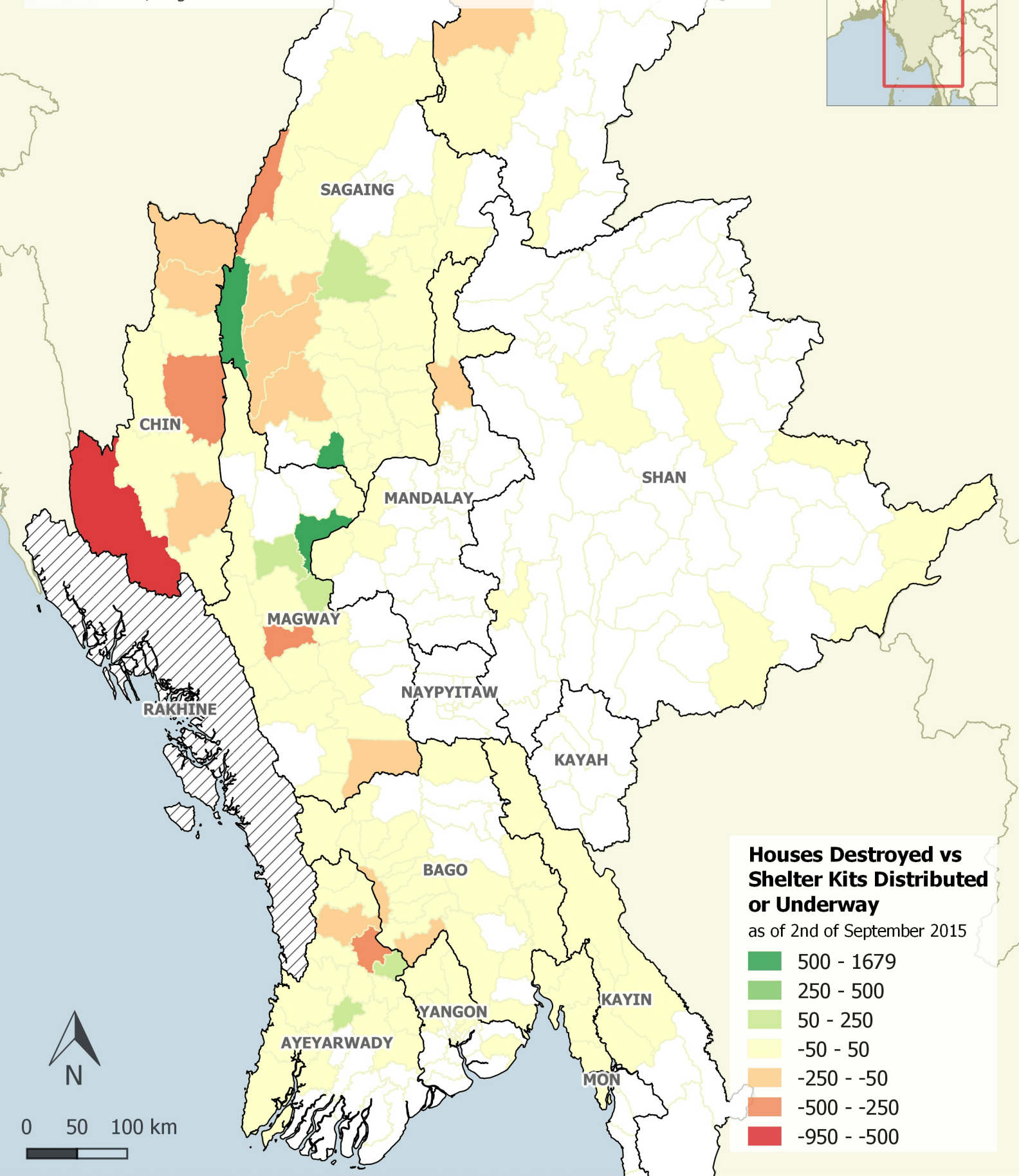




Figures are the last available and are accurate to our best knowledge. They will keep being updated as data become available. A few distributions have been reported at State / Region level and are not taken into account here.



# Gap Analysis: Housing Damage vs Shelter Response

Figures in Rakhine are not displayed as this area is not covered by the Myanmar Flood 2015 Shelter Cluster Coordination Team  
Sources: damage figures by MoSWRR, response figures by SCT and their partners and basemaps by MIMU

The maps used do not imply the expression of any opinion on the part of the Shelter Cluster Coordination concerning the legal status of a territory or of its authorities.