



---

# MINUTES OF SHELTER CLUSTER MEETING

## NUMBER 5 - 09.09.2015 YANGON

The Floods Response Regional Shelter Cluster Coordination Team has prepared these minutes

Version: 02.09.15

### 1 Introduction

---

#### 1.1 Background

It was agreed that a Shelter Cluster meeting specific to floods response (outside of the Rakhine area) would be conducted in the UNHCR building every Wednesday at 9 a.m. Next meeting will be the 16<sup>th</sup> of September and then every two weeks.

### 2 Attendance

UN-Habitat, Save the Children, IOM, UCLA, IsraAID, Samaritan Purse, LWF, UN-OCHA, IOM, UNHCR, Qatar Red Cross, CRS/KMSS, KMSS.

### 3 Previous Minutes

Minutes from the Floods response of the previous Shelter Cluster Coordination (02/09/15) meeting were distributed and accepted.

### 4 Discussion

---

#### 4.1 Agency updates

**IOM:** The 2,000 tarpaulins and 10,000 mosquito nets donated by the Austrian government arrived in Yangon last Friday. Two Shelter partners have requested all tarps for Chin. The SCT coordinator currently in Hakha will meet with them in order to avoid overlap. Save the Children had requested mosquito nets for Hakha. Other agencies can still contact IOM if they want to distribute mosquito nets.

**UN-Habitat:** Received funding from the Japanese government for recovery work in Chin State. They can also facilitate assessments where they have field offices if requested.

**Samaritan Purse:** Opened an office in Mandalay and are planning a shelter component in their programmes.

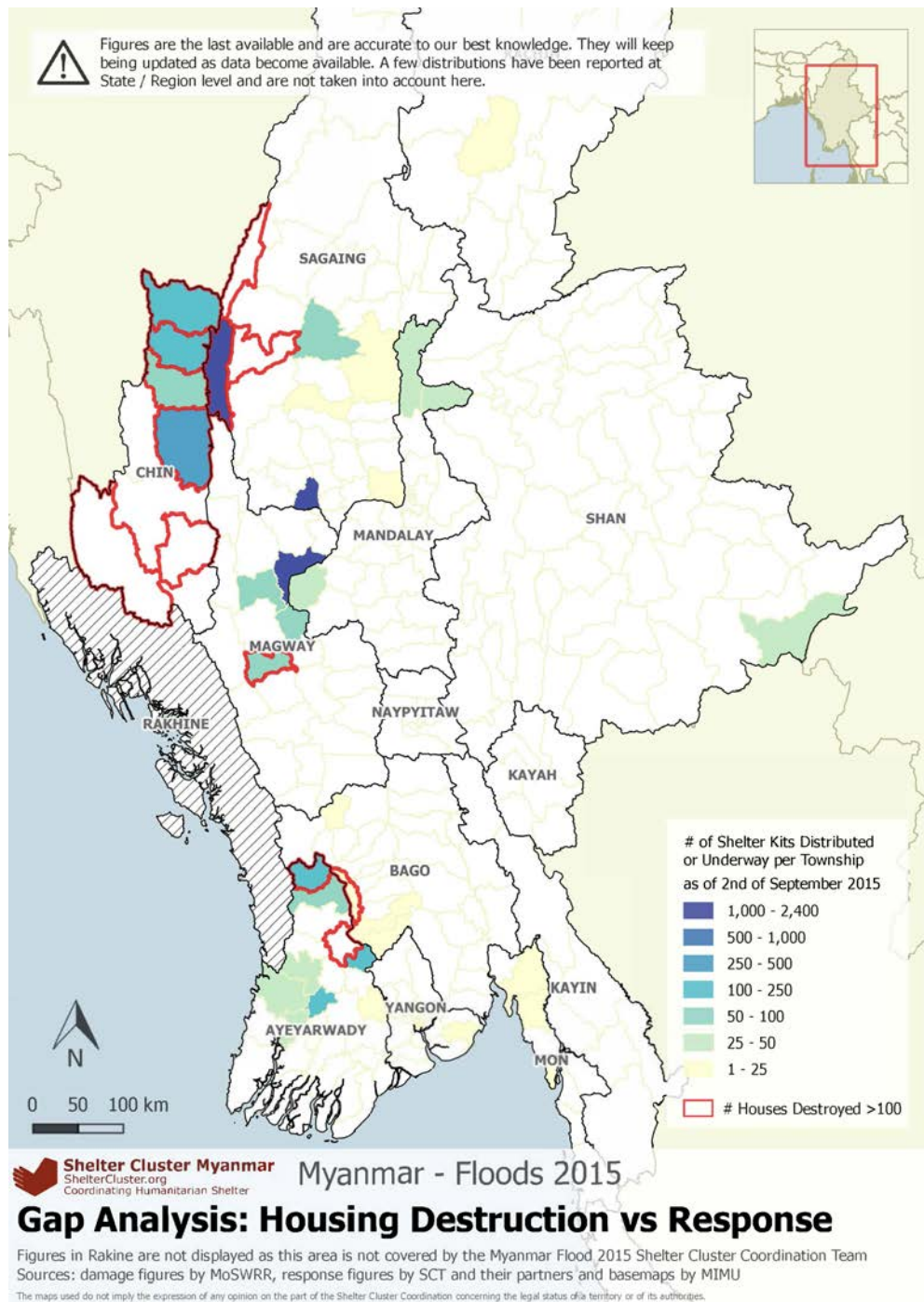
**KMSS/CRS:** KMSS assisted by CRS are about to assess further shelter needs aiming in particular to plan their recovery phase in Kale and Hakha.



**4.2 Needs and response analysis**

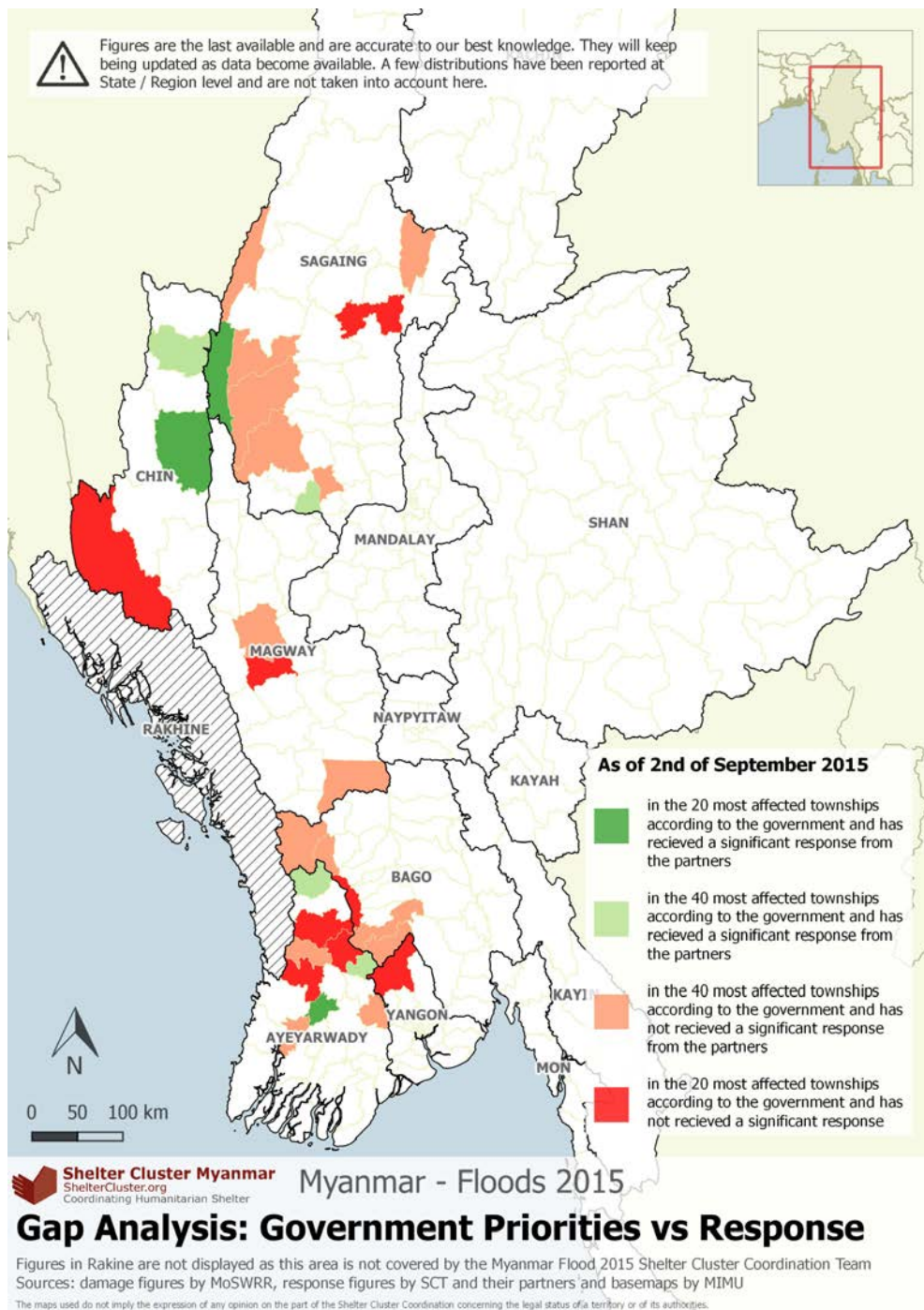
The SCT produced three maps analysing the needs and the response up to the 2<sup>nd</sup> of September (See maps below and available here: [www.sheltercluster.org/library/tables-and-maps](http://www.sheltercluster.org/library/tables-and-maps)).

- The first one shows emergency shelter distributed or underway *versus* the number of houses destroyed per township. It can be highlighted that Southern-Chin and more specifically Paletwa townships did not receive any assistance recorded by the SCT. This gap can be explained by the absence of Shelter partners and by the difficulty to reach Paletwa through Rakhine State. Any information concerning Paletwa will be most welcome.



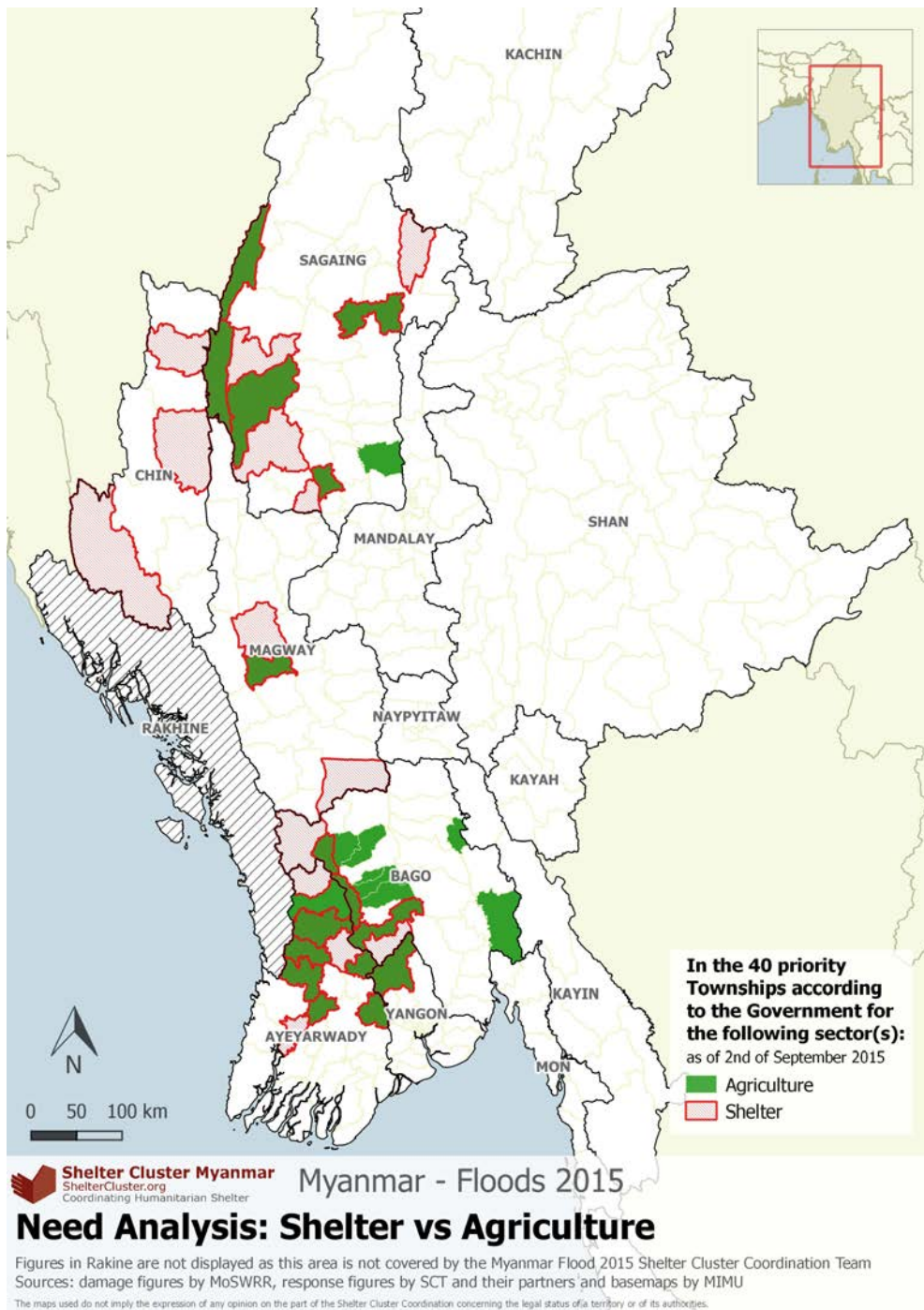


- The second maps compares the emergency response from Shelter Cluster partners to the most affected townships (Destroyed and damaged houses) as defined by the government in the National Natural Disaster Management Committee Situation Report #4 (2<sup>nd</sup> of September).





- The third map shows the 40 townships prioritized by the government as the most affected for Shelter and Agriculture. This map offers a first analysis for the cross-sector cash basket that is under discussion within the Cash Working group. Sagaing and Magway appear as the two regions where there are important damages on farmland and Shelter. In comparison, Chin State will need more support on shelter than livelihood or food. This is due to the type of natural disasters (landslides in Chin/Floods in other areas). In Ayeyarwady, numerous houses were affected by slow floods and, as the breakdown of damages houses from severely to minor damages is not known, extent of houses that will need repairs cannot be estimated yet.



**In the 40 priority Townships according to the Government for the following sector(s):**  
as of 2nd of September 2015

- Agriculture
- Shelter

### Need Analysis: Shelter vs Agriculture

Figures in Rakhine are not displayed as this area is not covered by the Myanmar Flood 2015 Shelter Cluster Coordination Team  
Sources: damage figures by MoSWRR, response figures by SCT and their partners and basemaps by MIMU  
The maps used do not imply the expression of any opinion on the part of the Shelter Cluster Coordination concerning the legal status of a territory or of its authorities.



---

### 4.3 Reporting template

---

The SCT 4W reporting template spread sheet has been sent to the Shelter partners. Answers are expected for late afternoon on Thursday 10<sup>th</sup> of September. If partners encounter any difficulty to fill the form, they are most welcome to contact the SCT Information Manager at [im.myanmar@sheltercluster.org](mailto:im.myanmar@sheltercluster.org)

Templates are also available here:

<http://www.sheltercluster.org/library/reporting-templates>

---

### 4.4 Strategy/recovery/forward thinking

---

Cluster leaders (Shelter, Food Security, Livelihood) and the cash-working group are developing guidelines to harmonize the Cash Transfer Programs across sectors and organizations. The suggested approach is unconditional grants.

The discussion went around two main topics:

- The amount of cash that should be allocated for a house severely damaged, moderately damaged, or with minor repairs, was discussed. Through emails before the meeting, two agencies proposed the following allocations:  
UNHCR, 500 US\$ for a severely damaged house, and ADRA around 350 US\$.  
UNHCR, 250 US\$ for moderate damages, and ADRA around 120 US\$  
50 US\$ for minor repairs or cleaning.
- How to harmonize with government instructions when known.

It has also been suggested that shelter related guidelines should be delivered along with the shelter grant.

---

### 4.5 Shelter Cluster focal points

---

Agencies willing to be Shelter Focal point at the township level are most welcome to volunteer. The main purpose of setting up Shelter Focal points is to create a channel of communication at the field level between agencies and to facilitate the flow of information.

---

### 4.6 Any other business

---

Partners were informed that the government would set up a Shelter Committee. SCT would contact the Shelter focal person on the government side when nominated.

The Myanmar Floods Shelter Cluster website: [www.sheltercluster.org/response/myanmar-floods-2015](http://www.sheltercluster.org/response/myanmar-floods-2015) is now being updated frequently, you can find there the minutes, sitreps, maps, tables and other related document.



## 5 Action items

1. Agencies to report available assessment information covering any area but in particular Southern Chin and Ayeyarwady.
2. Agencies to send back the 4W reporting template by Thursday afternoon.
3. Agencies to encourage NGO to be in contact with SCT.

## 6 Next meeting

Next meetings will be held at the UNHCR office at 9am Wednesday 16<sup>th</sup> of September.