
QUARTERLY SHELTER CLUSTER MEETING DECEMBER 2013

AGENDA

- 1. 2013 End Year Report on achievements**
- 2. Update on CAP 2014 Shelter Response plan**
- 3. Shelter Cluster structure and objectives for 2014**
- 4. Working groups**
- 5. Shelter Cluster Web Platform and information management**
- 6. AOB**

2013 ACHIEVEMENTS

(January to November 13)

FIGURES TO BE PROVIDED,
STILL COMPILING THE 4W
MATRIX FOR THIS YEAR...

1. EMERGENCY SHELTER

Mainly NFI distributions in the whole of Somalia due to conflict (Kismayo, Ceel Barde), flooding in Shabelles/Baidoa/ Abdudwaq, IDP returnees,...

2. TRANSITIONAL SHELTER

For the more protracted IDP situations, transitional solutions have been provided (New areas in 2013 include Baidoa, Beletweyne and Kismayo)

3. PERMANENT SHELTER

In Puntland and Somaliland, there has been progress made in securing land tenure for IDPs to locally integrate (advocacy for IDP land rights will be an important activity for 2014 under the protection cluster)

4. CAPACITY BUILDING

Training in site planning in Mogadishu, Training of regional coordinators in Garowe, REACH assessment in Doolow, Camp 77, KM7-KM13

PROVISION OF EMERGENCY ASSISTANCE IN 2013

Kismayo: conflict in town. ARC intervened immediately to the needs. In total 4000 NFIs were distributed, of which 1500 approximately specifically towards the displacement

Ceel Barde: 2000 NFIs were distributed with the displacement of Xudur

Abudwaq: floods, 2000 NFIs were distributed approximately mid year

Baidoa: floods August: 2500 NFIs were distributed after the floods, of which 1500 approximately were towards the displacement

Jowhar: floods August: 1500 NFIs were distributed

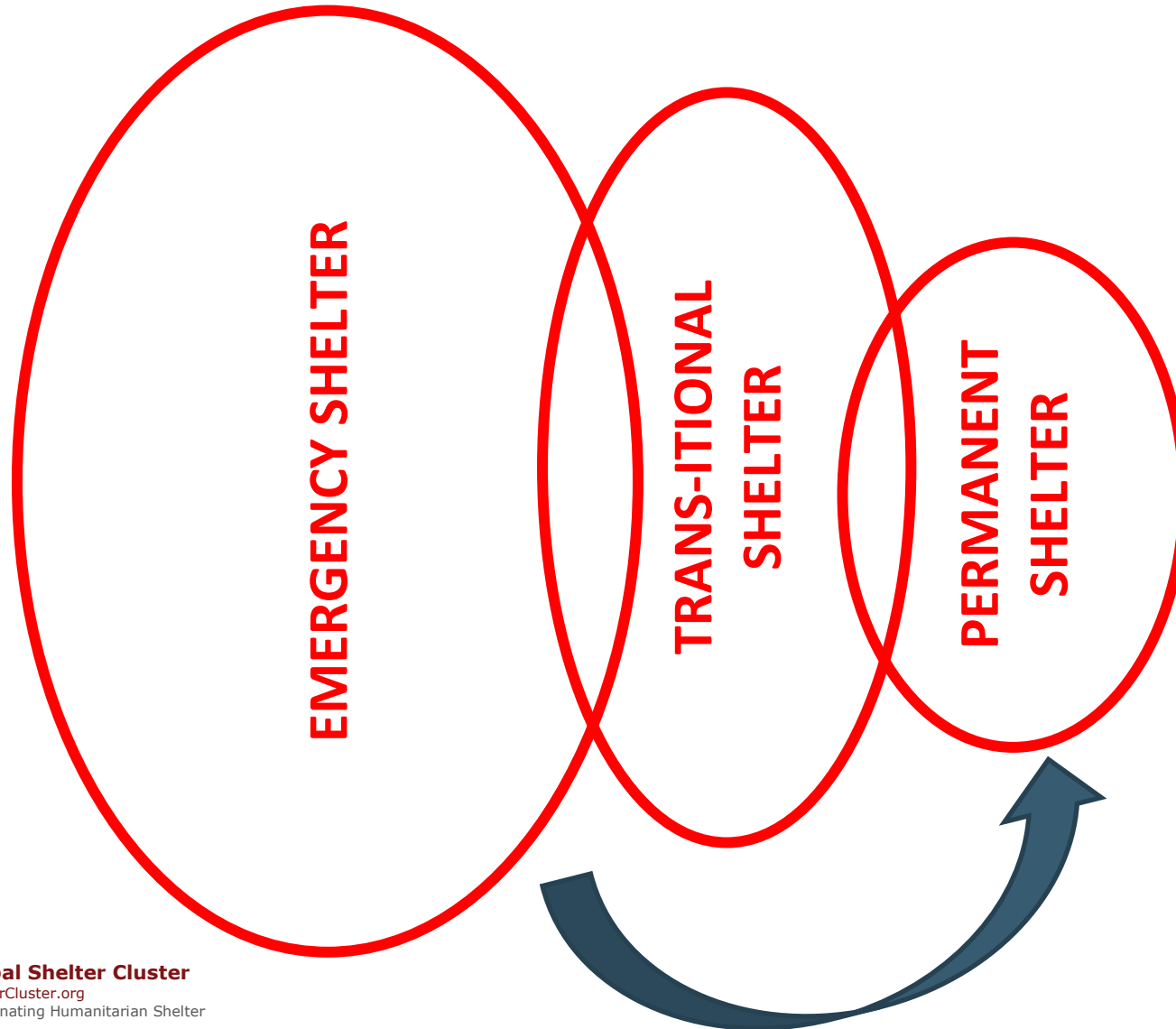
Jowhar floods: November: 10.000 NFIs are being prepared to be distributed

Beletweyne: floods, distribution of nearly 2000 NFIs

Puntland cyclones: 8500 NFIs

Small scale emergencies due to fire breaks and evictions (except Mogadishu): 1500

A SHIFT TOWARDS MORE SUSTAINABLE SOLUTIONS



PERMANENT SHELTER PROJECTS / LOCAL INTEGRATION

WORLVIDSION: 1200 houses in Garowe (completed)

UNHABITAT: 1000+ houses in Bossaso/Garowe (not completed)

UNHCR: 200 houses in Galkayo

NRC: 300 houses in Galkayo

CAPACITY BUILDING

SHELTER CLUSTER + UNHABITAT: training on site planning and the use of GPS (Mogadishu 2X)

SHELTER + PROTECTION CLUSTER : training for cluster coordinators on coordination, use of GPS and the webplatform

NRC: training of NRC staff and shelter cluster staff on Housing Land and Property

CALP: training on ToT for two staff of the shelter cluster

MFIELDWORK: training of staff in garowe and shelter cluster staff on the web platform and mobile technology.

REACH: trainings in Baidoa, Doolow and Mogadishu on assessments and roll out of the shelter cluster review.

2. CAP 2014 SHELTER CLUSTER (see attached document)

MAIN CHANGES:

SPLIT UP OF THE NFI DISTRIBUTIONS FOR SUDDEN ONSET
DISASTERS AND FOR PROTRACTED IDPS

A STRONGER EMPHASIS ON OUTCOME MONITORING AND
IMPACT

A STRONGER EMPHASIS ON HOUSING, LAND AND
PROPERTY

A STRONGER EMPHASIS ON OWNER DRIVEN APPROACHES
AND THE USE OF VOUCHERS/CASH

3. SHELTER CLUSTER STRUCTURE 2014 AND MAIN OBJECTIVES FOR CAPACITY BUILDING

STEP BY STEP PROCESS 2013

FOUNDATION FOR 2014

2013 WAS A PILOT PHASE TO GET ALL THE AGENCIES ON BOARD

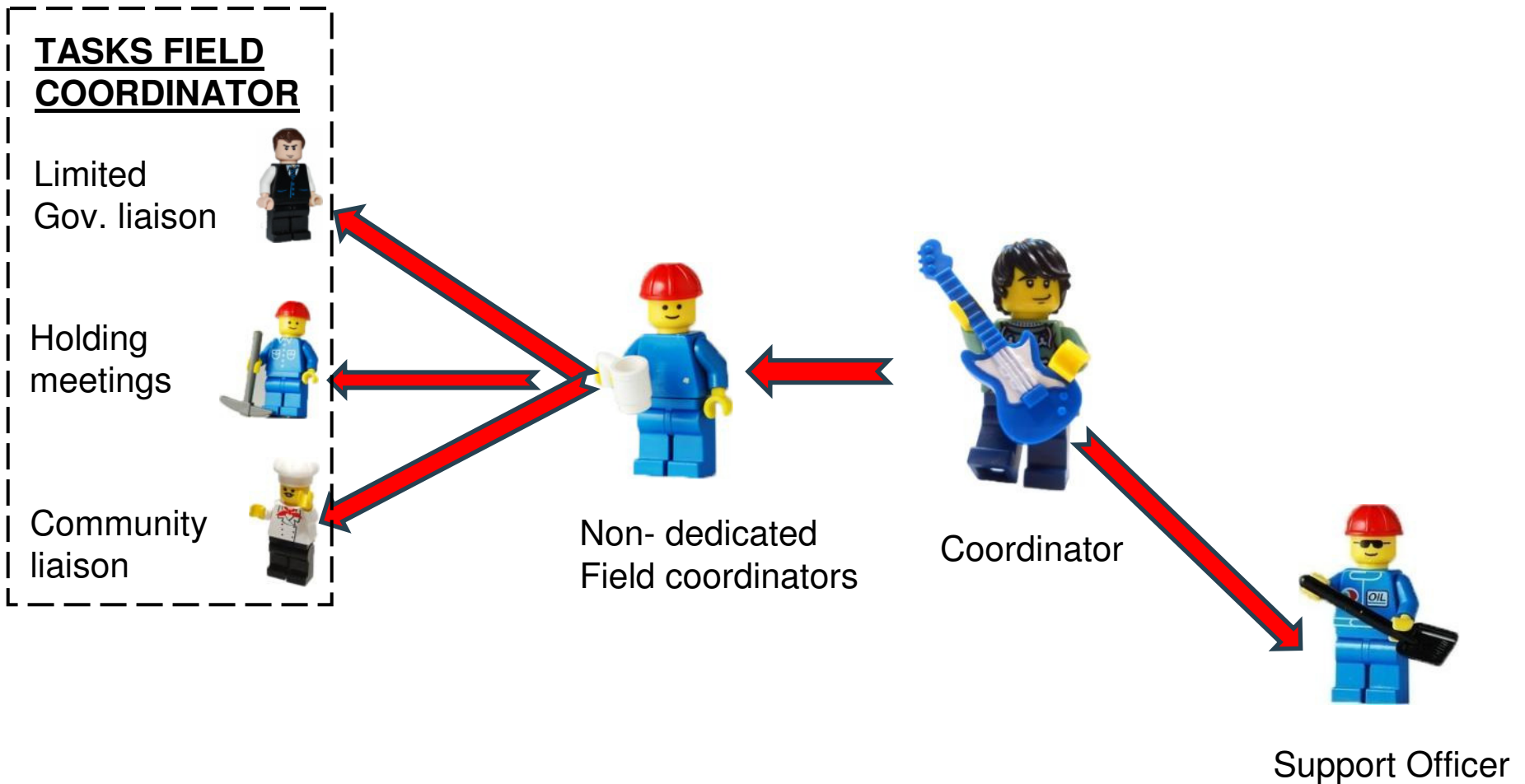
2013 WAS A STRONG YEAR OF ADVOCACY FOR JOINT
COORDINATION WITH THE PARTNERS

THE DIGITAL PLATFORM WAS LAUNCHED AND PILOTED IN
DIFFERENT REGIONS (REACH FOR BAIDOA, ARC FOR KISMAYO,
NRC FOR BOSSASO, UNHCR FOR MOGADISHU).

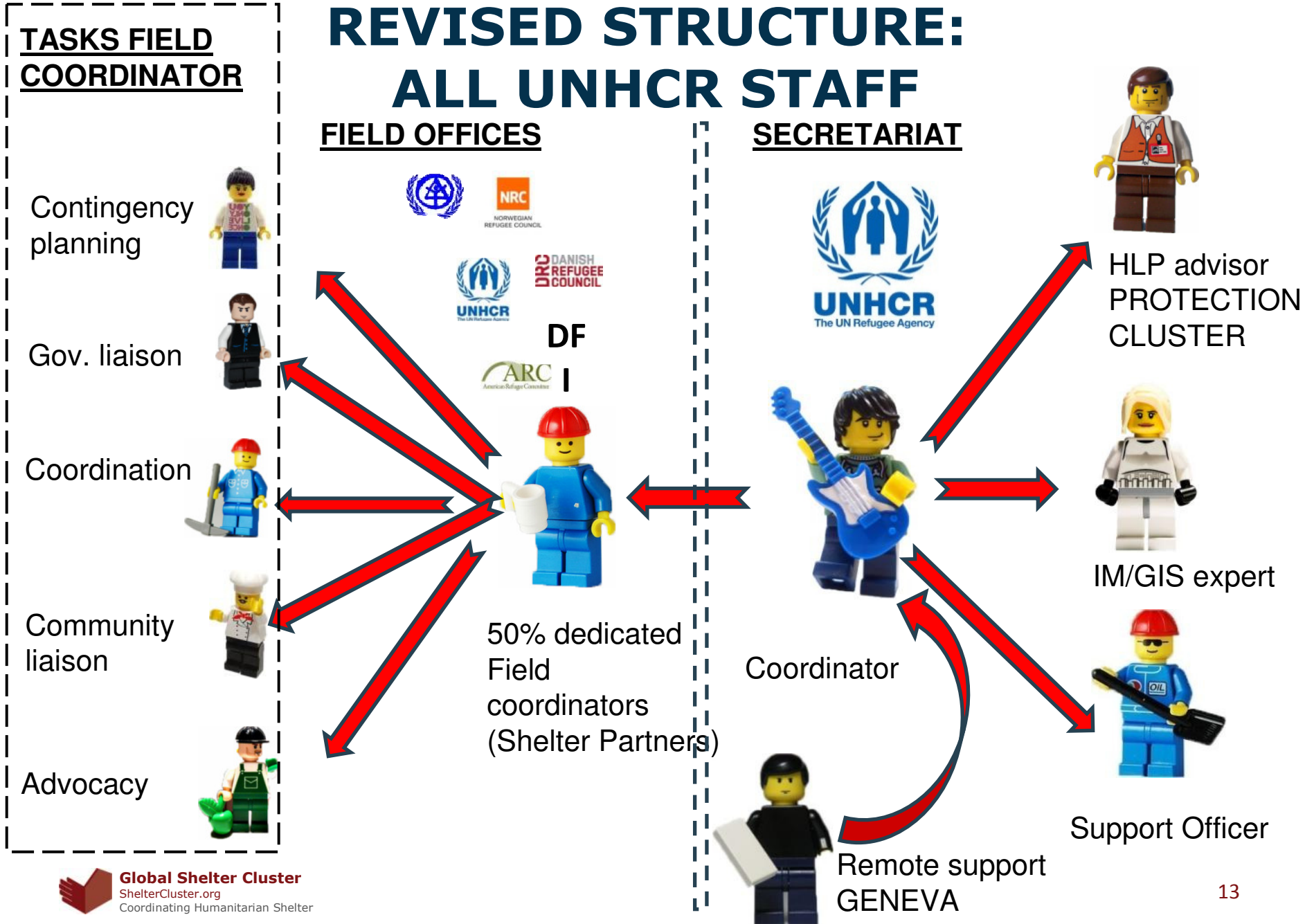
ALL COORDINATORS WERE TRAINED

ECHO HAS SHOWN COMMITMENT TO INCLUDE COSTS FOR
COORDINATION WITHIN SHELTER PARTNERS PROPOSALS

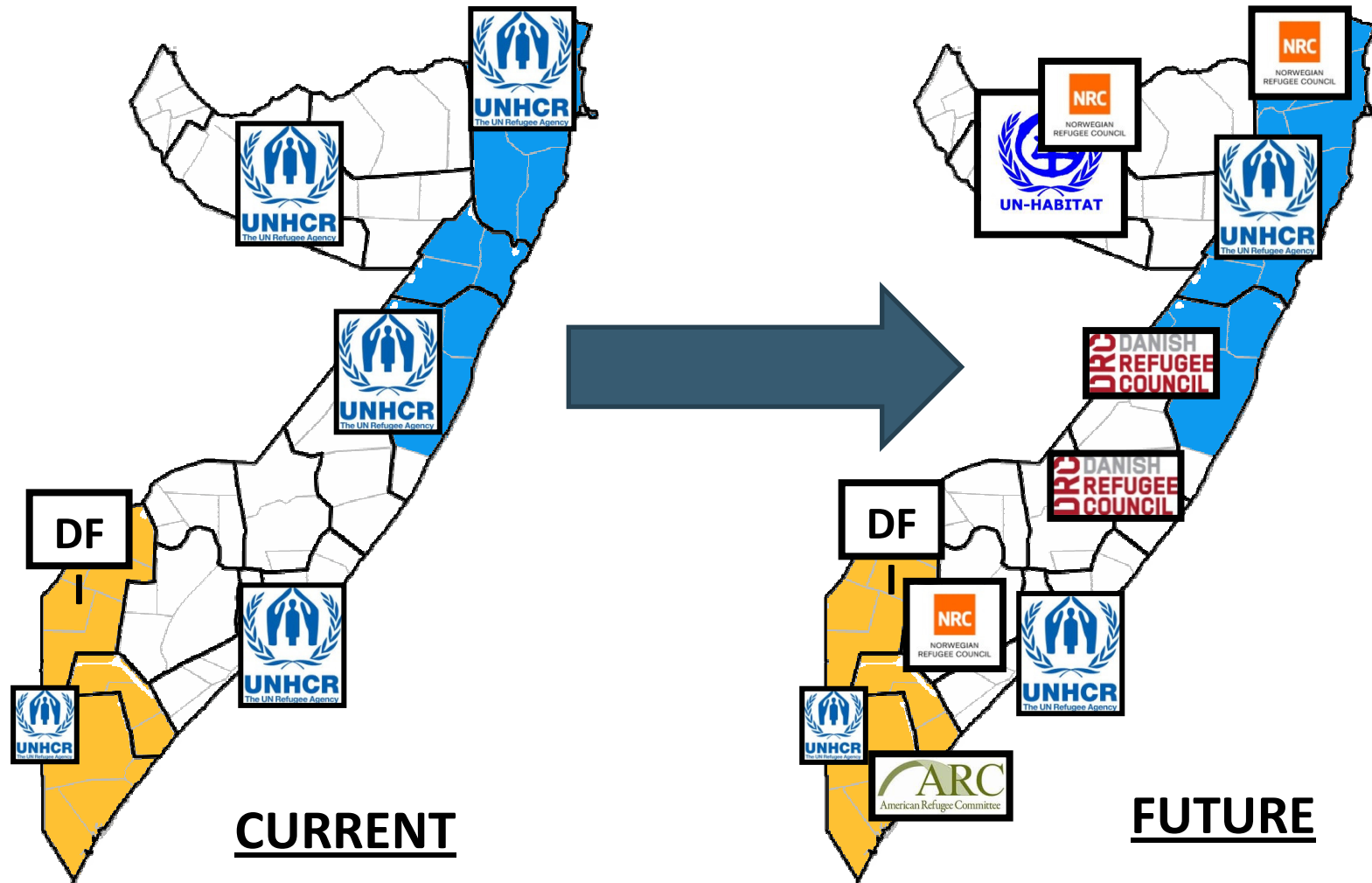
FORMER STRUCTURE: ALL UNHCR STAFF



REVISED STRUCTURE: ALL UNHCR STAFF



COMBINED UN AND NGO LEAD FIELD STRUCTURES



CAPACITY BUILDING PROJECTS IN 2014 **THROUGH THE CLUSTER**

NRC: HOUSING LAND AND PROPERTY MAINSTREAMING SESSIONS

DRC: CONTINUATION OF THE PROTECTION MAINSTREAMING

SHELTER CLUSTER: CASH MAINSTREAMING SESSIONS FOR FIELD

SHELTER CLUSTER: TRAINING OF TRAINERS ON PASSA

(Participatory approaches) AND STT (shelter technical training)

SHELTER CLUSTER SECRETARIAT: SECOND TRAINING ON COORDINATION

SHELTER CLUSTER FIELD LEVEL: SMALLER TRAINING MODULES ON THE WEB PLATFORM, MAPPING METHODOLOGY, MONITORING FRAMEWORK...

4. WORKING GROUP (Sustainable Shelter Solutions Working Group):

**The aim of the WG is to work
towards improved accountability
through a standardization process
of the project cycle management
AND
improved sharing of information**

DISCUSSIONS IN WG

Theme:	Description:
NAME OF THE WORKING GROUP	Sustainable Shelter Solutions Working Group
Definition of Durable Solutions in the Shelter Context	Come to an agreed upon definition of what the Durable Solutions framework/thinking means for the design and execution of Shelter projects
Assessment Tool	Design an assessment tool which facilitates proper targeting, a suitable shelter approach and response, and thus improved impact of the project
Housing Land and Property	Increase awareness of HLP issues in programme design; improve response to (possible) HLP difficulties; inform the working group's discussions surrounding Durable Solutions
Market Analysis / Cash & Voucher Based Interventions	Increase awareness of cash based shelter intervention possibilities; improve the suitability, sustainability and impact of shelter programmes by using innovative approaches to generate shelter / settlement ownership; create concrete tools that facilitate cash / voucher based shelter interventions for agencies that lack the expertise
Monitoring (impact)	Improve the effectiveness of future shelter programming by making impact assessment possible; development of an impact monitoring system / methodology and tool; facilitating impact monitoring by developing / procuring a mobile technology monitoring system and equipment
Typologies	Improving programme design by offering a broad selection of shelter typologies and lessons learned
Approaches	Improving the impact, sustainability and durability of the shelter intervention by looking at different approaches to project implementation with a focus on an owner driven approach. Contractor driven versus Owner driven approaches
Decision Making Tree	Development of a decision making tree which can improve agencies targeting and thus shelter intervention effectiveness and impact; guidance on the type of intervention regarding different situations incorporating all of the items discussed during the Sustainable Shelter Solutions Working Group

OUTPUTS OF THE WORKING GROUP

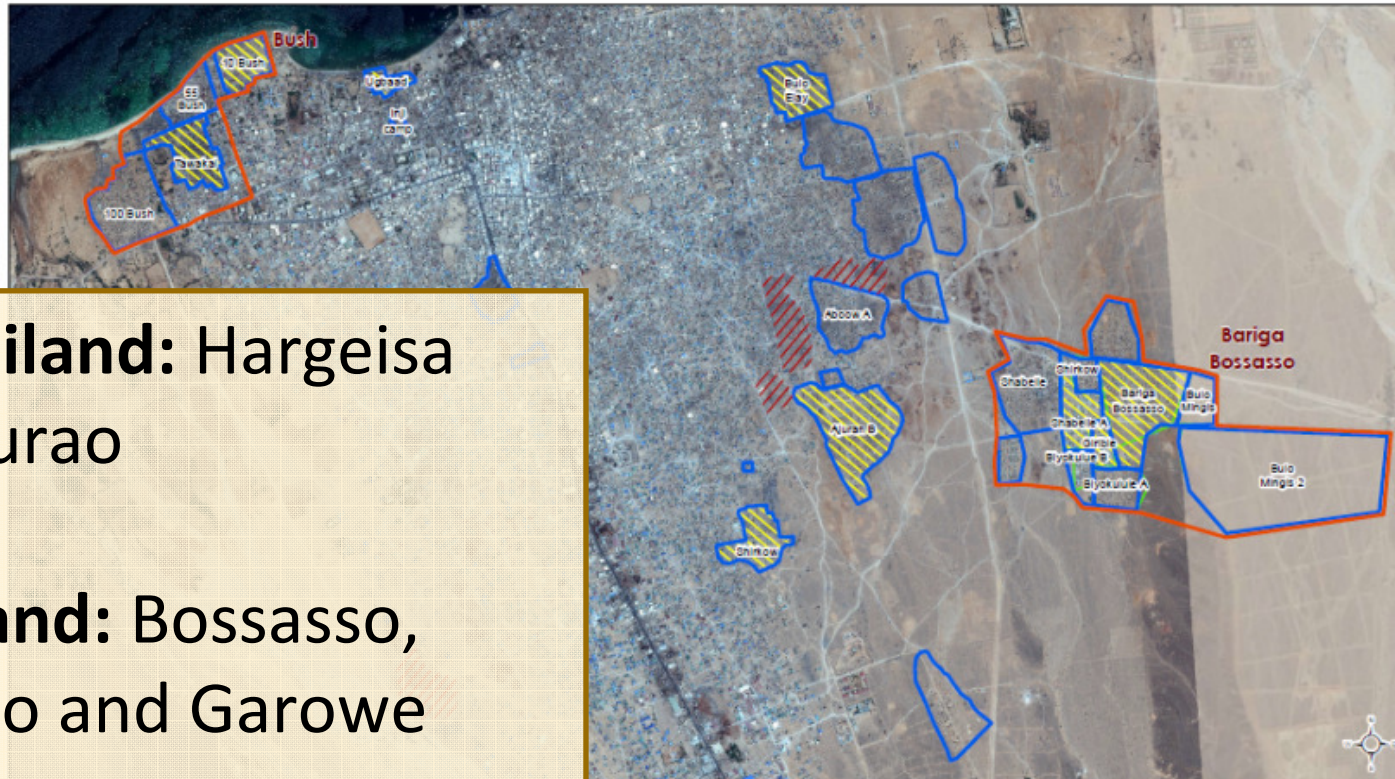
TO PRODUCE BOTH POLICY AND PRACTICAL DOCUMENTS TO IMPROVE THE ACCOUNTABILITY OF ALL SHELTER CLUSTER MEMBERS. FOR ALL THEMES, A GUIDANCE NOTE, TOOLKIT AND TRAINING MODULE IS IN PREPARATION.

ASSESSMENT TOOLS / MAPPING



SHELTER-CLUSTER Sector Review
 Somalia Bossasso IDPs Camps Reference Map

For Humanitarian Relief Purposes Only
 Production date : 19 December 2012



Somaliland: Hargeisa and Burao

Puntland: Bossasso, Qardho and Garowe

Central South Somalia: Mogadishu

Legend:
 Camp delineation
 IDP settlement
 Former IDP settlement (empty)
 Former IDP settlement (occupied)
 Former IDP settlement (abandoned)

Source:
 Satellite Data: European Space Imaging
 Imagery Date: 9 October 2012
 Projection: WGS 1984 UTM Zone 36E
 SRS: EPSG:31436
 SSO_IDP_19DEC2012_44
 Email: mapping@impact-initiatives.org

Scale for A4 : 1: 24,000

Funded by: European Union

A product of REACH (Regional Emergency Assessment and Coordination of Humanitarian Assistance)

Note: Data, designations and boundaries contained on this map are not warranted to be free and do not imply acceptance by the REACH partners, associates, donors mentioned on this map.

ASSESSMENT TOOLS / MAPPING

- **REACH = BACKBONE (3-TIERED APPROACH)**
- **APPROPRIATE THE WORK THAT REACH HAS PRODUCED TO ENSURE SUSTAINABILITY**
- **DATA MANAGEMENT?**
- **STATIC VERSUS DYNAMIC INFORMATION**
- **STANDARDIZE THE ASSESSMENT TOOLS AND THE GUIDANCE NOTES**
- **REACH TO CONTINUE BASE LINE ASSESSMENTS IN NEWLY ACCESSIBLE AREAS (Baidoa, Kismayo, Gaalkayo)**

MONITORING & EVALUATION FRAMEWORK

- **NRC HAS PROVIDED A FIRST DRAFT FOR COMMENTS BUILDING ON TOP OF THEIR EXPERIENCE.**
- **REACH : WILL DO AN EVALUATION ON THE PERMANENT SHELTER**
- **OUTCOME MONITORING AND IMPACT**
- **DECIDE ON TIME-FRAME FOR MINIMUM MONITORING**
- **REMOTE MONITORING (MOBILE TECHNOLOGY)**
- **DATA MANAGEMENT (DIGITAL PLATFORM)**
- **STATIC VERSUS DYNAMIC INFORMATION**
- **STANDARDIZE THE MONITORING TOOLS AND THE GUIDANCE NOTES**

THE SHELTER TOOLKIT & INFORMATION SHARING

- **PARTNERS TO DIRECTLY UPLOAD THEIR PROJECTS**
- **BUILDING ON TOP OF EXISTING SYSTEMS:
UNHCR GLOBAL WEB PLATFORM**
- **STANDARDIZATION OF TERMINOLOGIES**
- **ADVOCACY TOOL FOR SHELTER PROJECTS**
- **COMMUNICATION TOOL TO OUTSIDERS**
- **DATA-BASE OF TECHNICAL DOCUMENTS**

THE SHELTER TOOLKIT & INFORMATION SHARING

The screenshot shows a web browser window displaying the UNHCR Nairobi Hub website. The browser's address bar shows the URL unhcr-nairobi-hub.org/toolkit/project/14. The website header features the UNHCR logo and the text "Physical Planning & Shelter Toolkit Regional Support Hub in Nairobi". A navigation menu includes "Projects", "Catalogue", "Community", and "Guidance". A user profile for "martijn.godd" is visible in the top right corner.

Transitional Shelter Kit (TSK) - Emergency response

Project Description

Transitional shelter kit for IPD operation in Kenya as a response to the post election violence in 2008. This shelter kit includes a second phase modification. Additional materials include wooden plank and locksmith items to allow beneficiary to built one door and two windows.

Project Summary

- Size:** 18.00m²
- Cost:** \$472.00
- Country:** Kenya
- Project Type:** Shelter Projects

LATEST PROJECTS

- Permanent house units
- NFIs Distribution in Dhobley
- Housing project in Hargeisa
- PROTOTYPE SHELTER
- PROTOTYPE SHELTER

PROJECTS

Use the projects section of the toolkit to have an extensive overview of the projects UNHCR has been involved in.

CONTRACTOR DRIVEN VERSUS OWNER DRIVEN (levels of engagement)

	PUUR CONTRACTOR DRIVEN	PURCHASE OF MATERIALS AND DIRECT LABOUR SOURCING	PURCHASE OF MATERIALS AND COMMUNITY LABOUR	VOUCHERS AND COMMUNITY LABOUR	CASH AND COMMUNITY LABOUR
WATER					
MATERIALS					
COORDINATION					
SUPERVISION					
WAREHOUSING					
LOGISTICS					
TRAININGS					
PROVIDING TOOLS					
FOOD FOR WORK					
CASH FOR WORK					

KEYWORDS AND DEFINITIONS

DECISION MAKING TREE

MARKET ANALYSIS

BENEFICIARY PARTICIPATION

OWNER DRIVEN CONSTRUCTION

COMMUNAL INFRASTRUCTURE

INTEGRATED PROGRAMMING

5. SHELTER CLUSTER PLATFORM THROUGH MOBILE TECHNOLOGY

It will be freely accessible to all shelter partners.

As a pilot initiative, the following standard tools will be made available:

***4W matrix**

***Standard Shelter Assessment tool**

***Monitoring tool**

***Infrastructure mapping tool**

PILOTING OF THE PLATFORM

REACH: SHELTER CLUSTER REVIEW IN BAIDOA

UNHCR: PILOT FOR JOWHAR FLOODING

ARC: MAPPING EXERCISE IN KISMAYO

NRC: MAPPING EXERCISE IN BOSSASO

ARC: SHELTER ASSESSMENT IN KISMAYO

ALL: 4W MATRIX ONGOING

UNHCR: EVICTION ASSESSMENT IN KISMAYO (DEC)