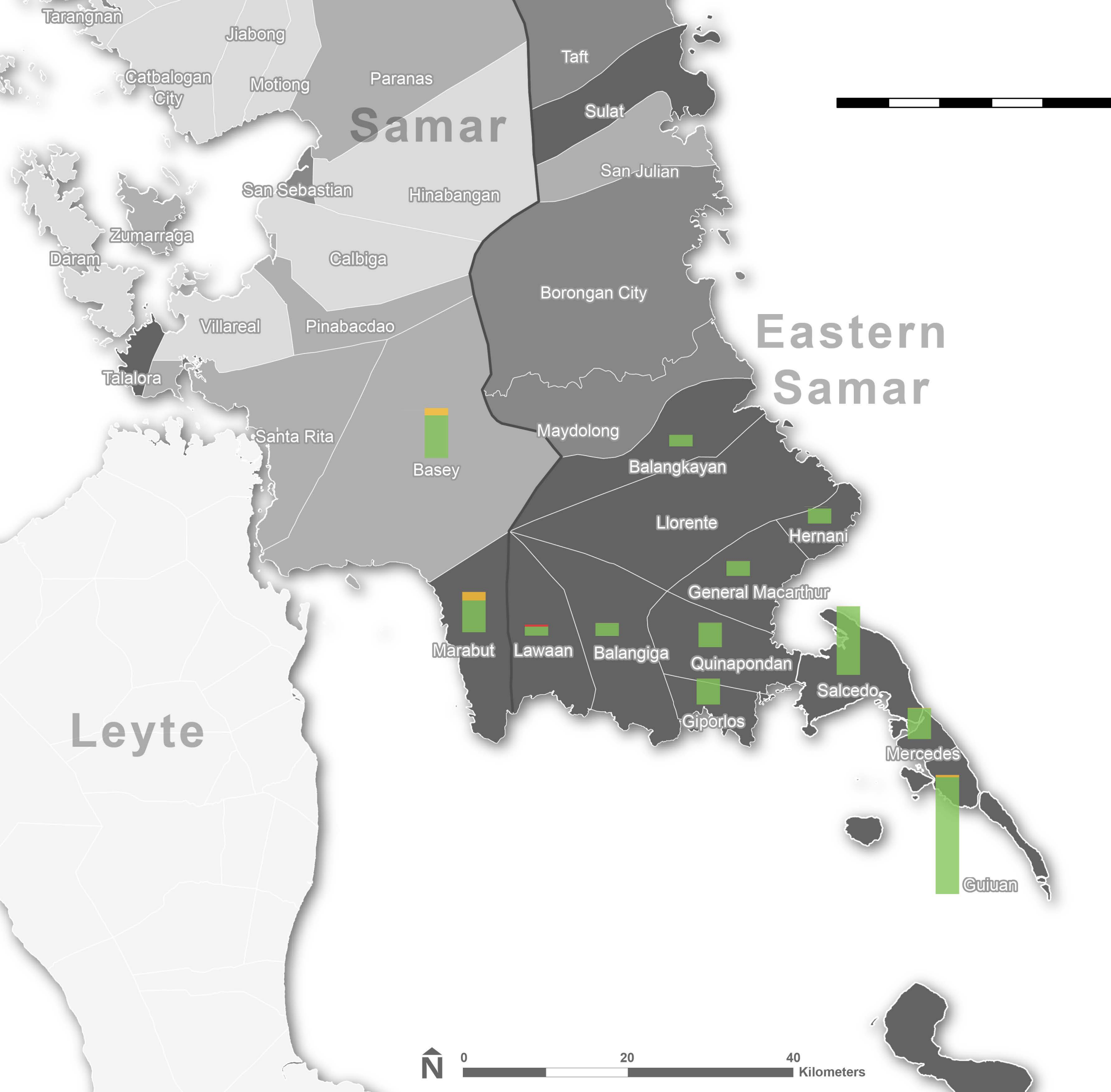


# Emergency Shelter in Region VIII (Samar)

Produced January 27, 2014



This **Emergency Shelter Coverage Map** depicts the gap between total damaged households per municipalities and households receiving / planned to be receiving emergency shelter from shelter cluster partners. Emergency shelter solutions: tarpaulins and fixings (minimum 1 per household), plastic sheeting and fixings, or tents.

**Who What Where (3W)** information on shelter activities represents agency information reported to the Shelter Cluster by January 26, 2014. If your agency's information is missing or out of date, please download a 3W reporting form at [www.sheltercluster.org/Asia/Philippines](http://www.sheltercluster.org/Asia/Philippines) and submit it to [reporting.phil@sheltercluster.org](mailto:reporting.phil@sheltercluster.org).

**Data Sources**  
 DSWD (DROMIC damage data)  
 GADM (administrative boundaries)  
 Shelter Cluster Partners

### Needs vs. Activities

- 10,000 HH
- Planned
- Gap (unmet needs)
- Reached

### Shelter Needs

Damage Intensity (DSWD)

- Light or No Damage
- Bad Damage
- Severe Damage
- Total Damage
- Unknown / Out of Area

The depiction and use of boundaries, and names and associated data shown here do not imply endorsement or acceptance by the Shelter Cluster.