

You **CAN** Keep Your Family Safe In Future Earthquakes and Typhoons

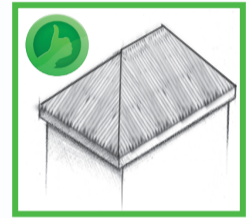


For masonry construction, follow these 7 tips to make your house safer in earthquakes and more resistant to typhoons.



1.

Build a **hipped roof** or a **lightweight gable**. Masonry gables are heavy and can collapse in an earthquake.



2.

Connect the roof strongly to the ring beam with **straps** or **brackets**, or else it could blow away in a typhoon!



3.

Connect the building using a **ring beam** on top of walls, a **plinth beam** at the foundation, and **tie columns** between them.



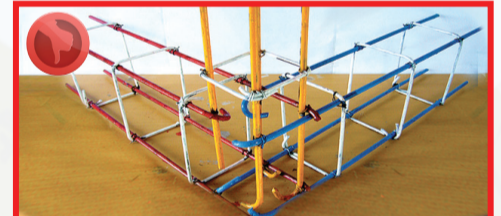
4.

Overlap rebar by at least **40 rebar diameters**; short overlaps and hooks are not strong!



5.

Connect beams and columns together by **continuing rebar through the joints**. Use rebar stirrups with rotated hooks around column and beam rebar.



6.

Use **strong blocks**. If the blocks break when dropped, find another seller that makes stronger blocks. Wet the blocks before adding to the wall and add plaster to the walls.



7.

Connect the walls to the columns with **rebar dowels** or masonry toothing. Build the walls **before** pouring the columns and ring beam.

