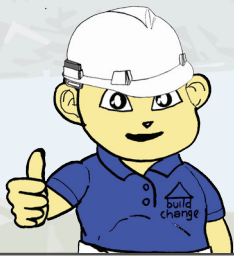


## You CAN keep your family safe from earthquakes.

And you should **build back better**, because more earthquakes are coming. Consider building a **timber house**. In earthquakes, it's safer than a masonry house.

Whichever type of house you choose, remember to **make connections strong**, from the roof to the foundation. Also, use only **good quality materials**. Don't use limestone or coral or beach sand as aggregates to make concrete or concrete blocks. The decisions you make now in the reconstruction of your home will affect the safety of your family in the future.



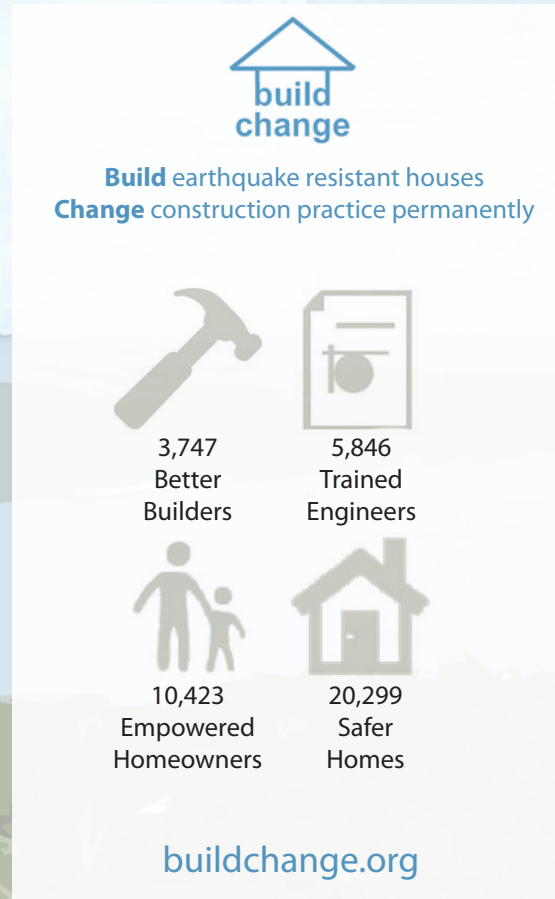
**When building with wood, follow these 7 tips to make your house safer in earthquakes and more resistant to typhoons.**

# You CAN Keep Your Family Safe In Future Earthquakes and Typhoons



## TIPS ON MAKING YOUR HOME STRONGER AND SAFER

with information on:  
**WOOD CONSTRUCTION**



  
Shelter Cluster  
ShelterCluster.org  
Coordinating Humanitarian Shelter

  
Build earthquake resistant houses  
Change construction practice permanently  
[buildchange.org](http://buildchange.org)

  
Shelter Cluster  
ShelterCluster.org  
Coordinating Humanitarian Shelter

  
Shelter Cluster  
ShelterCluster.org  
Coordinating Humanitarian Shelter

  
Build earthquake resistant houses  
Change construction practice permanently  
[buildchange.org](http://buildchange.org)

# 1.

Connect all wood framing members **strongly** to each other to improve typhoon resistance. Nails are cheap!



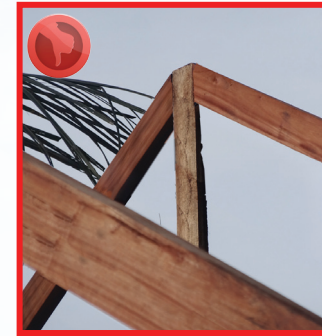
# 2.

Use **diagonal wind bracing** between trusses.



# 3.

Truss members should be connected with **straps** or **gusset plates** to have strength in strong winds.



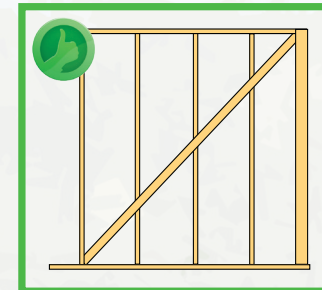
# 4.

Connect the roof strongly to the walls with **straps** or **brackets**.



# 5.

Use **diagonal bracing** to strengthen column-beam connections.



# 6.

Anchor the posts to foundations with **post brackets**.



# 7.

Foundations must be **deep** and/or **heavy** to counteract the uplift force of the wind.



**Shelter Cluster Philippines**  
ShelterCluster.org  
Coordinating Humanitarian Shelter



**Build** earthquake resistant houses  
**Change** construction practice permanently  
buildchange.org