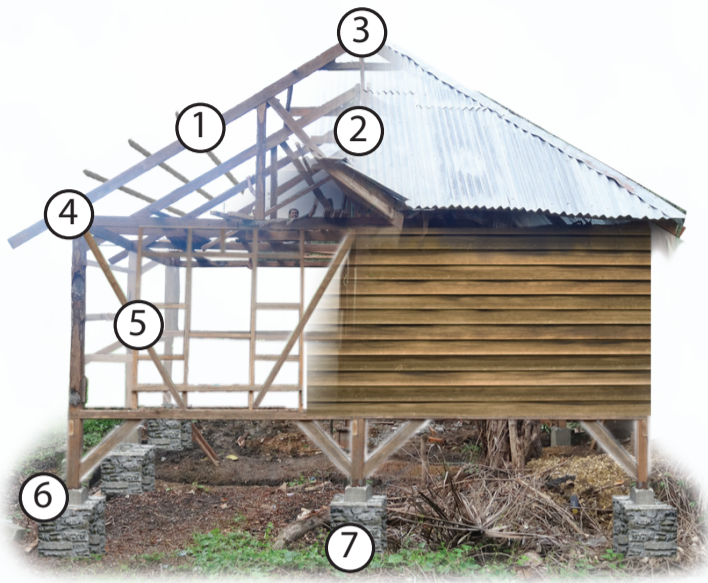


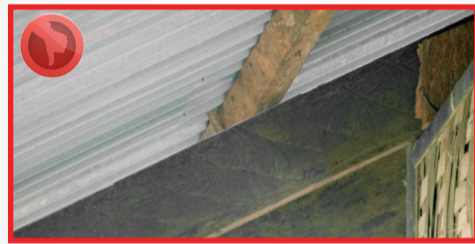
You **CAN** Keep Your Family Safe In Future Earthquakes and Typhoons



For wood construction, follow these 7 tips to make your house safer in earthquakes and more resistant to typhoons.

1.

Connect all wood framing members **strongly** to each other to improve typhoon resistance. Nails are cheap!



2.

Use **diagonal wind bracing** between trusses.



3.

Truss members should be connected with **straps** or **gusset plates** to have strength in strong winds.



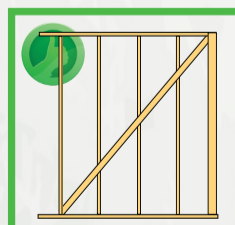
4.

Connect the roof strongly to the walls with **straps** or **brackets**.



5.

Use **diagonal bracing** to strengthen column-beam connections.



6.

Anchor the posts to foundations with **post brackets**.



7.

Foundations must be **deep** and/or **heavy** to counteract the uplift force of the wind.