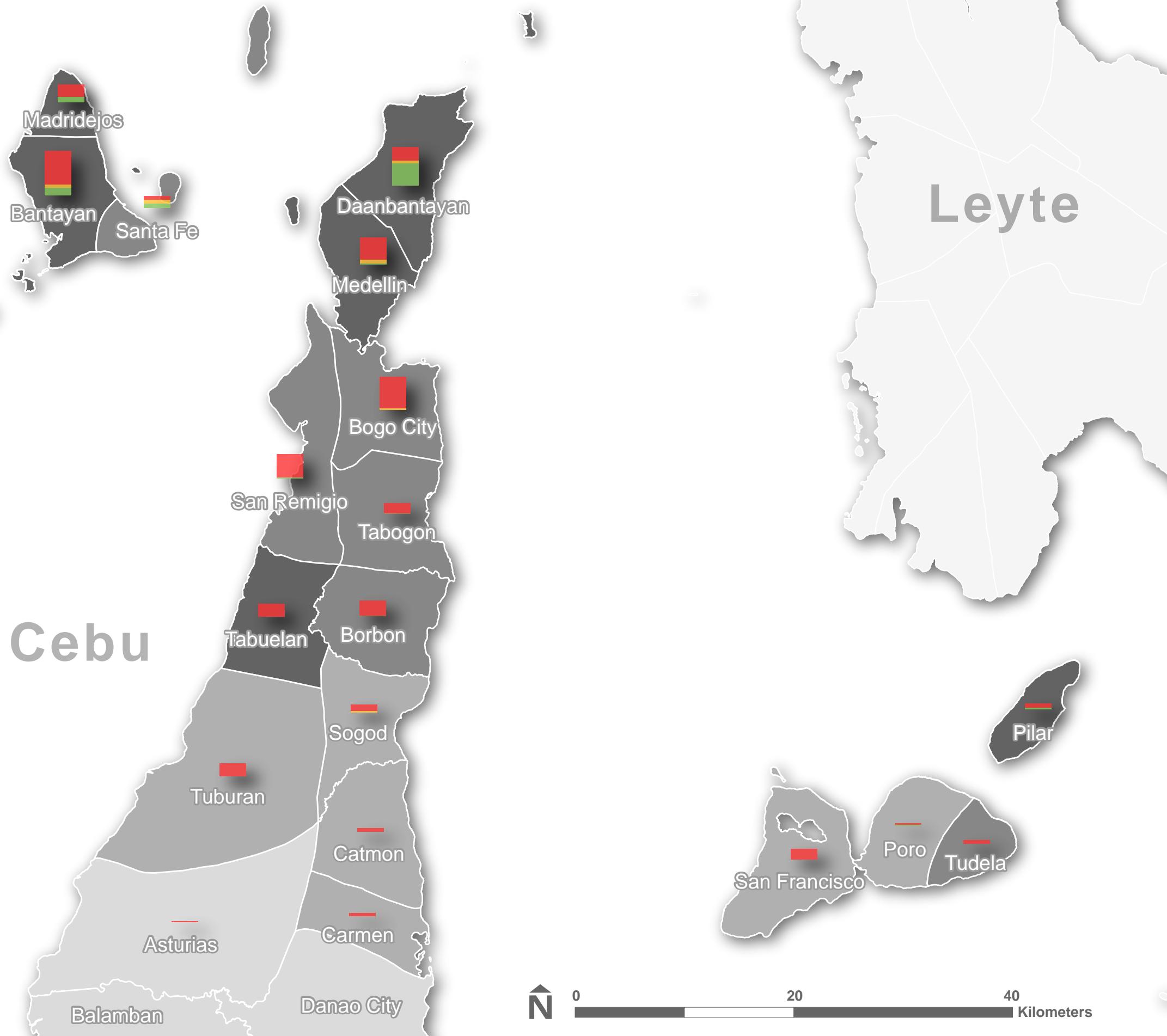
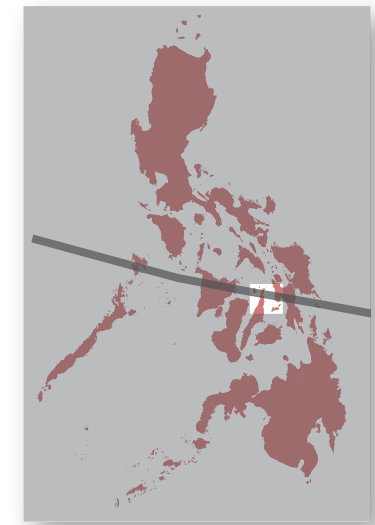


Supporting Self Recovery of Shelter in Region VII (Cebu)

Produced April 15, 2014



This **Support for Self Recovery Map** depicts the gap between total damaged households per municipalities and households receiving / planned to be receiving support in the form of roofing materials, transitional shelter, core shelter, or cash.

Who What Where (3W) information on shelter activities represents agency information reported to the Shelter Cluster by April 13, 2014. If your agency's information is missing or out of date, please download a 3W reporting form at www.sheltercluster.org/Asia/Philippines and submit it to reporting.phil@sheltercluster.org.

Data Sources
 DSWD (DROMIC damage data)
 GADM (administrative boundaries)
 Shelter Cluster Partners

Needs vs. Activities

- 10,000 HH
- Planned
- Gap (unmet needs)
- Reached

Shelter Needs

Damage Density (DSWD)

- Light or No Damage
- Bad Damage
- Severe Damage
- Total Damage
- Unknown / Out of Area

Damage Density is a proxy indicator for the proportion of damaged households based on a 2013 projected population, estimated average household size (4.7) and estimated household damaged (DSWD).

The depiction and use of boundaries, and names and associated data shown here do not imply endorsement or acceptance by the Shelter Cluster.

