

---

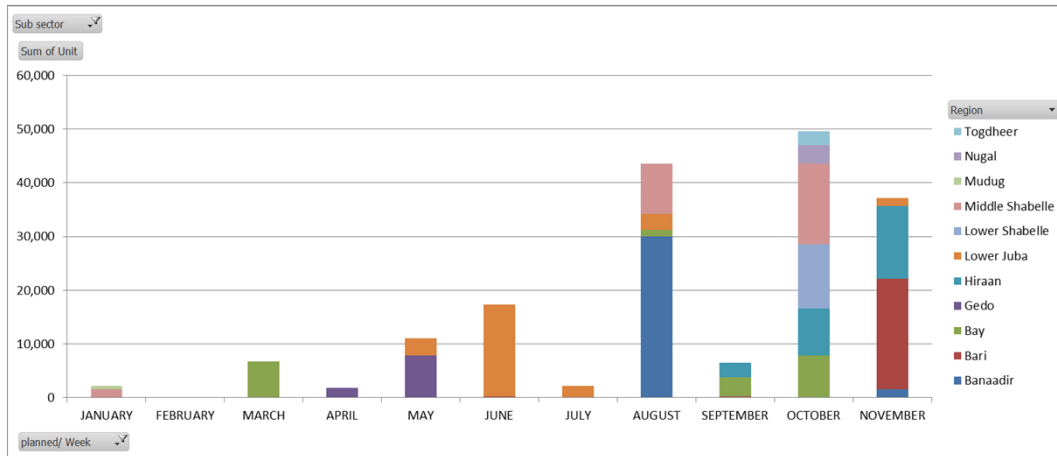
# QUARTERLY SHELTER CLUSTER MEETING DECEMBER 2014

---

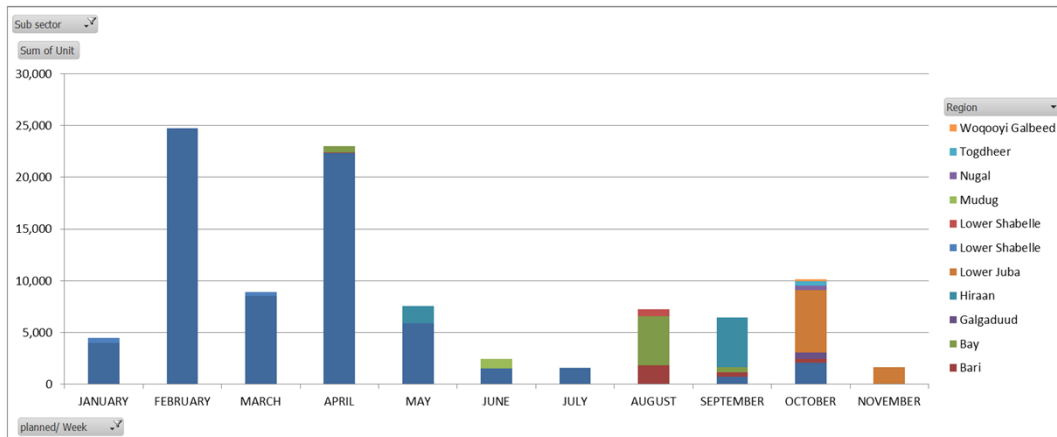
# **AGENDA**

- 1. 2014 Mid Year Report and achievements**
- 2. Shelter Cluster structure and objectives for 2014**
- 3. Mapping infrastructure exercise**
- 4. Working groups**
- 5. Work-plan for the next 6 months, including trainings**
- 6. AOB**

# END YEAR REVIEW: achievements



1. **EMERGENCY SHELTER: to date 178,194** (last six months) Many response were related to floods, evictions, inter-clan conflict and the military offensive mainly in **Baidoa, Kismaayo, Luuq, Dhobley, Beletweyne, Marka, Jowhar and Banaadir.**

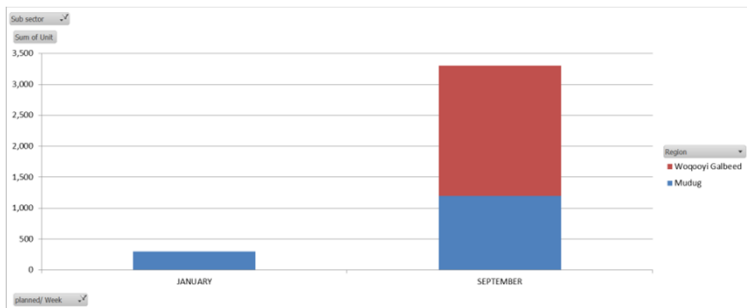


2. **TRANSITIONAL SHELTER: to date 98,118** These projects remain heavily **under-funded**. Majority of targeted IDPs we (70,332) were provided with transitional shelter kits (that include a door). A stronger focus should be laid in laying foundations towards more sustainable solutions. There have progress been made in getting **longer term land tenure agreements** in other regions in South Central: Baidoa, Kismaayo and Luuq.

# END YEAR REVIEW: achievements

## 3. PERMANENT SHELTER (3600 persons reached)

In Puntland and Somaliland, there has been progress made in securing permanent land tenure for IDPs to locally integrate (CHF funding and bi-lateral funding). NRC has provided HLP mainstreaming sessions for the different regions. It will be important to come up with a strong advocacy document for longer term solutions.



## 4. CAPACITY BUILDING: many capacity building projects have been happening in 2014:

- Training in infrastructure mapping exercise (SC): Mogadishu (50), Bossaso (16), Gaalkacyo (16), Baidoa (12), Hargeysa (16), Kismaayo (16), Dhobley (10), Jowhar/Marka (12)
- Training by REACH in Luuq, Mogadishu, Baidoa, Kismaayo, Gaalkacyo on the tri-cluster needs assessment.
- Training on mobile technology (SC/Mfieldwork): in Nairobi partners (more than 50)
- HLP mainstreaming at field level: more than 50 persons
- Cluster Coordination Training (together with Protection Cluster): 30 persons

# ADVOCACY STEPS IN 2014

The main activities that shelter cluster has been advocating for in 2014 are the following:

- Ensuring a baseline for all IDP urban centers: INFRASTRUCTURE MAPPING EXERCISES and ensuring all on-line maps and reports are circulated.
- Empowering mobile technology to all partners
- Ensuring website is up and running
- Encouraging participation of the government in shelter cluster projects, meetings and assessments
- Advocating for improved land tenure
- Closely working with protection cluster on evictions in Kismaayo and Mogadishu
- Advocacy for time-ly delivery of emergency assistance (roll out of mobile rapid needs assessment)

# EVALUATION GLOBAL SHELTER CLUSTER: overall coordination on advocacy

*(recommendation by Global Shelter Cluster evaluation):*

- *“Provide global support for advocacy, including development of Factsheets and infographics, and a simple leaflet about the Shelter Cluster in English and Somali”*
- *“Consider an advocacy TWIG to raise and maintain awareness of shelter funding needs.”*

# ADVOCACY STEPS IN 2015

The main activities that shelter cluster has been advocating for in 2014 are the following:

- Ensuring an UP TO DATE WEBSITE (see map pages and regional pages)
- Provide monthly FACT SHEETS, with highlights
- Using the lessons learned and recommendations from the global shelter cluster for HIGHER LEVEL advocacy and fundraising to donors on transitional and permanent shelter projects
- Further encourage participation of the government in shelter cluster projects, meetings and assessments
  - Regarding improved land tenure
  - Capacity building of partners and counterparts
  - ...

# EVALUATION GLOBAL SHELTER CLUSTER: emergency response

*“As a direct result of the humanitarian response, which reached the vast majority of the IDP population in the evaluated area, expenditures on shelter materials and household items have decreased between June 2013 and November 2014”*

Indicator	June 2013	November 2014
1. Shelter type	Buul: 80% Non-buul: 20%	Buul: 85% Non-buul: 15%
2. Materials used for shelter roof and walls construction	72% cloth and rags	73% plastic sheeting
3. % of households reporting having received shelter assistance	7%	40%
4. % of households without physical access to functioning markets	64%	56%
5. % of households that report shelter as a top three expenditure	68%	20%
6. Number of shelters per plot	1.7	2
7. % of beneficiary households reporting X problem related to their shelter assistance	93% hot temperatures	31% hot temperatures
8. % of targeted households satisfied with their shelter or non-food item assistance they received	-	47% satisfied/very satisfied
9. % of households with access to services/infrastructure	Latrines: 14% outside 50 metre radius Water points: 29% outside 200 metre radius	Latrines: 34% outside 50 metre radius Water points: 13% outside 200 metre radius
10. % of households that perceive that they are safe from security-related issues and natural hazards	74%	81%
11. % of households that report problems with the local community	7%	2%

# EVALUATION GLOBAL SHELTER CLUSTER: transitional shelter response



*“One positive outcome observed as a result of the transitional shelter response is the larger proportion of kiosks compared to non-transitional settlements. This is a possible sign that IDP households are able to invest household income in livelihoods—usually an indicator of overall sustainability of a transitional shelter project.”*

*“However, many of the transitional shelters that were built two years ago now need repairs. Most households have not been provided training on proper maintenance techniques...”*

# EVALUATION GLOBAL SHELTER CLUSTER: Permanent shelter response

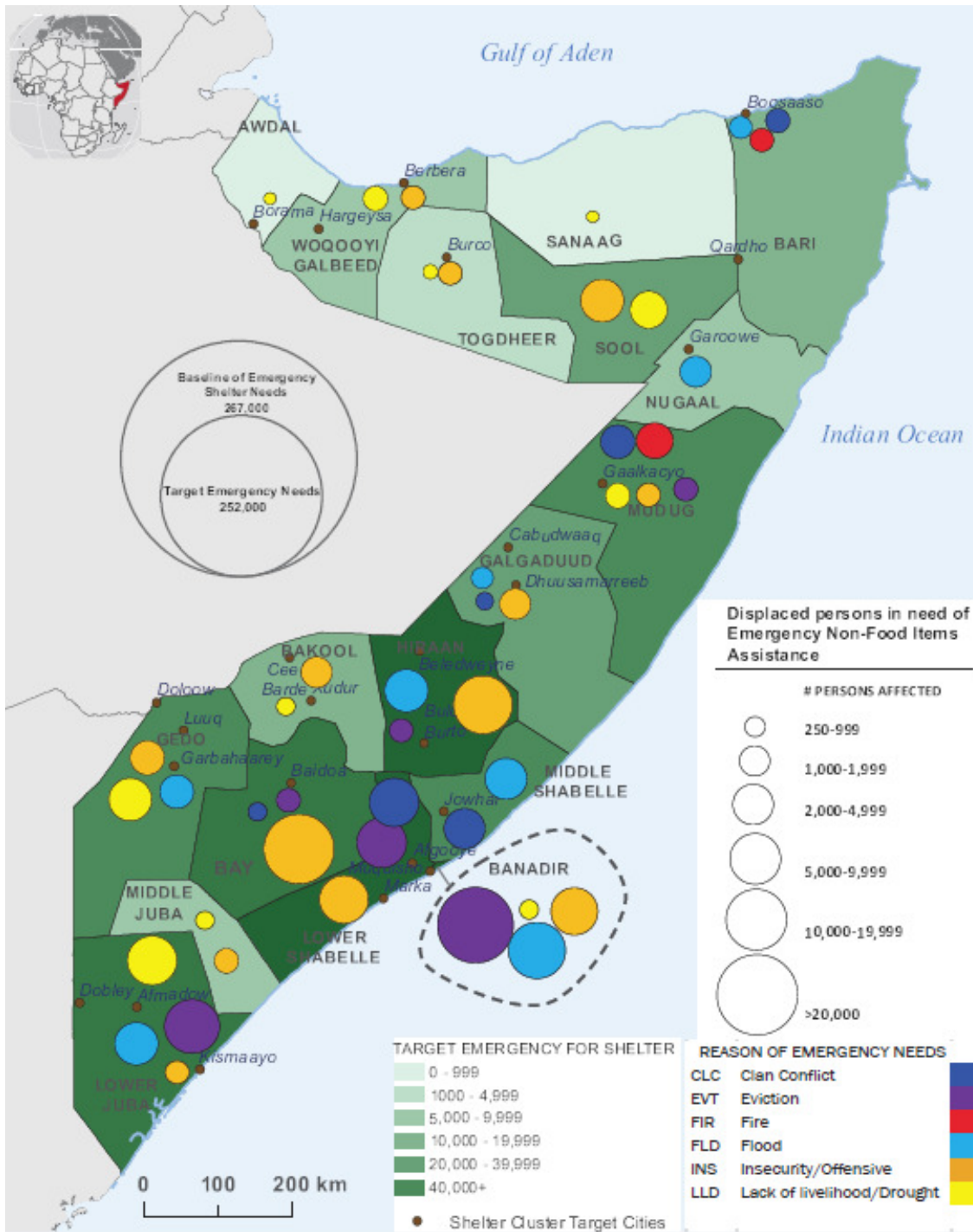


*“... there is a clear desire from households residing in the permanent houses to further improve and develop their homes beyond the current structure that was provided to them. Household needs have shifted from a focus on basic shelter to financial and livelihood support to further invest in their land and home.”*

*“The Shelter Cluster should continue to push towards owner decision making processes where the shelters can be built by the beneficiaries themselves, while taking a settlement-based approach”*

# 2. SHELTER CLUSTER HUMANITARIAN RESPONSE PLAN

Strategic Objective (SO)	Cluster objective (CO)	Key cluster indicators
SO 1 and SO 2	Contribute to the protection of -displaced people, including those affected by natural hazards, through provision of NFIs and emergency shelter.	Number of displaced people assisted with NFIs and emergency shelter Baseline: 265,000 <sup>14</sup> Target: 252,000
SO 3	Improve the shelter conditions of the protractedly internally displaced people.	Number of protractedly displaced people assisted with safe and habitable shelter with improved land tenure Baseline: 965,000 <sup>15</sup> Target: 215,000  Number of protractedly displaced households that have received NFIs through direct distribution, vouchers or cash mechanisms Baseline: 965,000 Target: 182,900

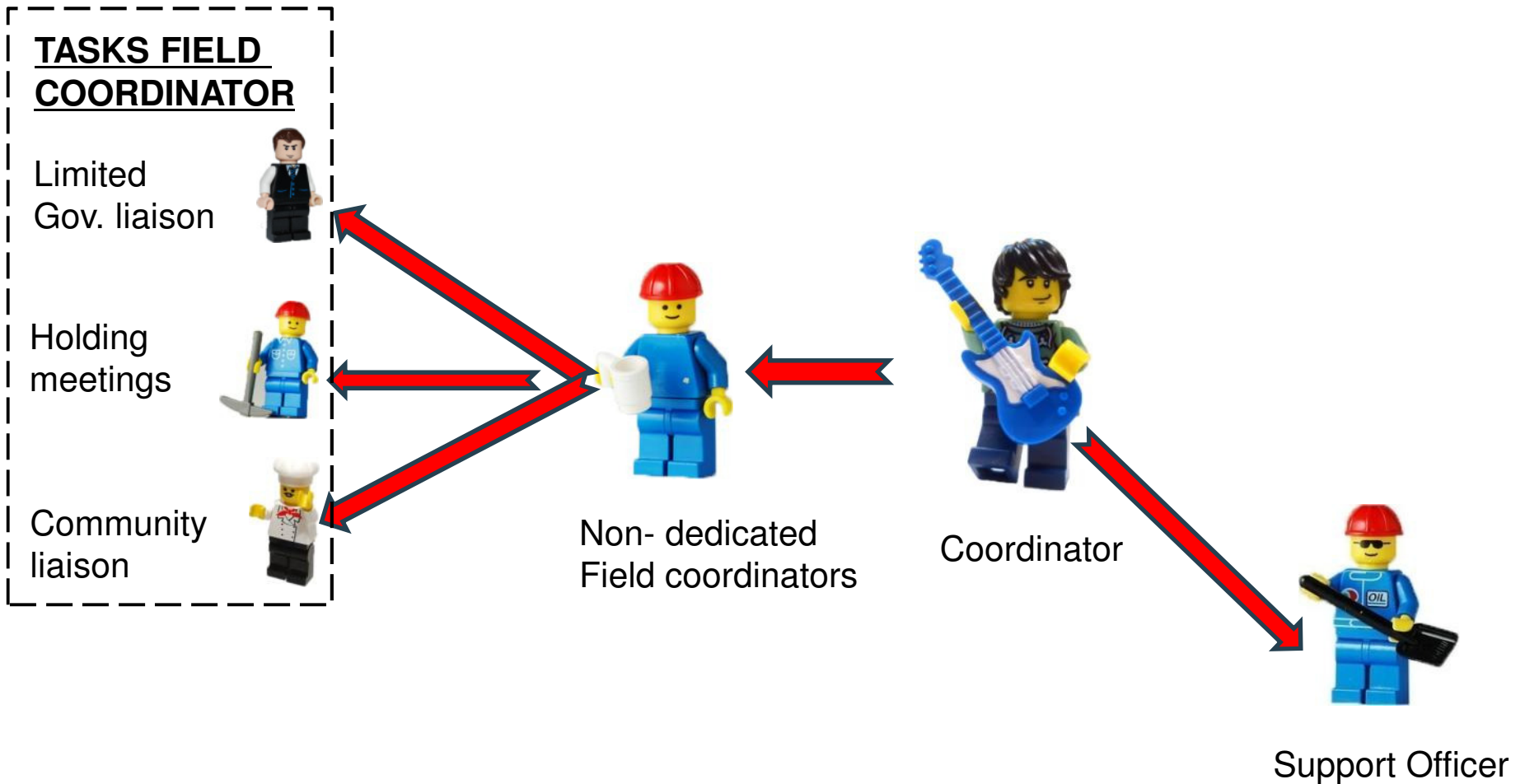


# MAP ON EMERGENCY ASSISTANCE

---

# **3. SHELTER CLUSTER STRUCTURE 2014 AND MAIN OBJECTIVES FOR CAPACITY BUILDING**

# FORMER STRUCTURE: ALL UNHCR STAFF



**TASKS FIELD COORDINATOR**

Contingency planning



Gov. liaison



Coordination



Community liaison



Advocacy



**REVISED STRUCTURE:**

**FIELD OFFICES**



DFI



50% dedicated Field coordinators (Shelter Partners)

**SECRETARIAT**



Coordinator



Remote support GENEVA



HLP advisor



Intern (recruited)

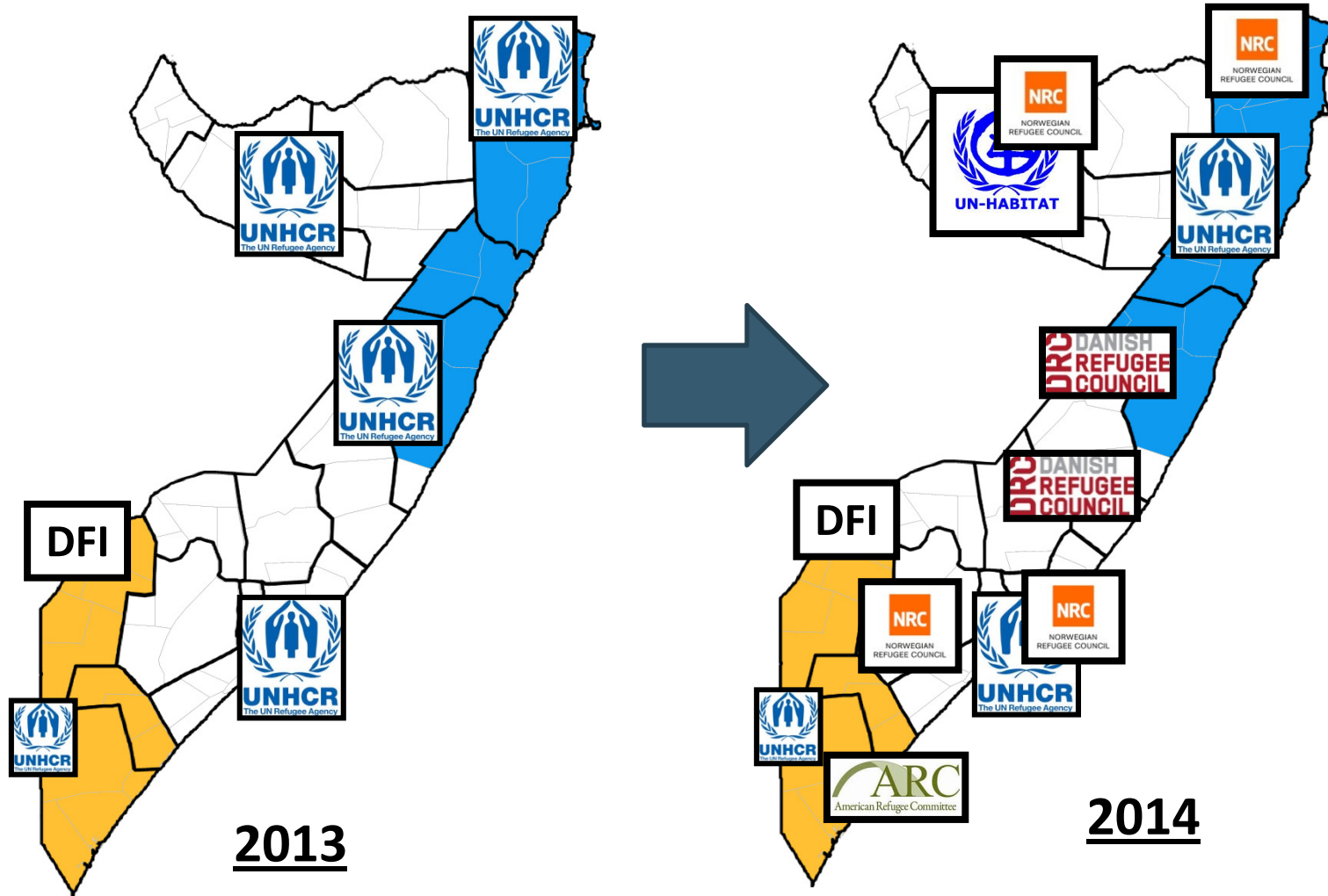


IM/GIS expert (recruited)



Support Officer (recruited) 15

# COMBINED UN AND NGO LEAD FIELD STRUCTURES



---

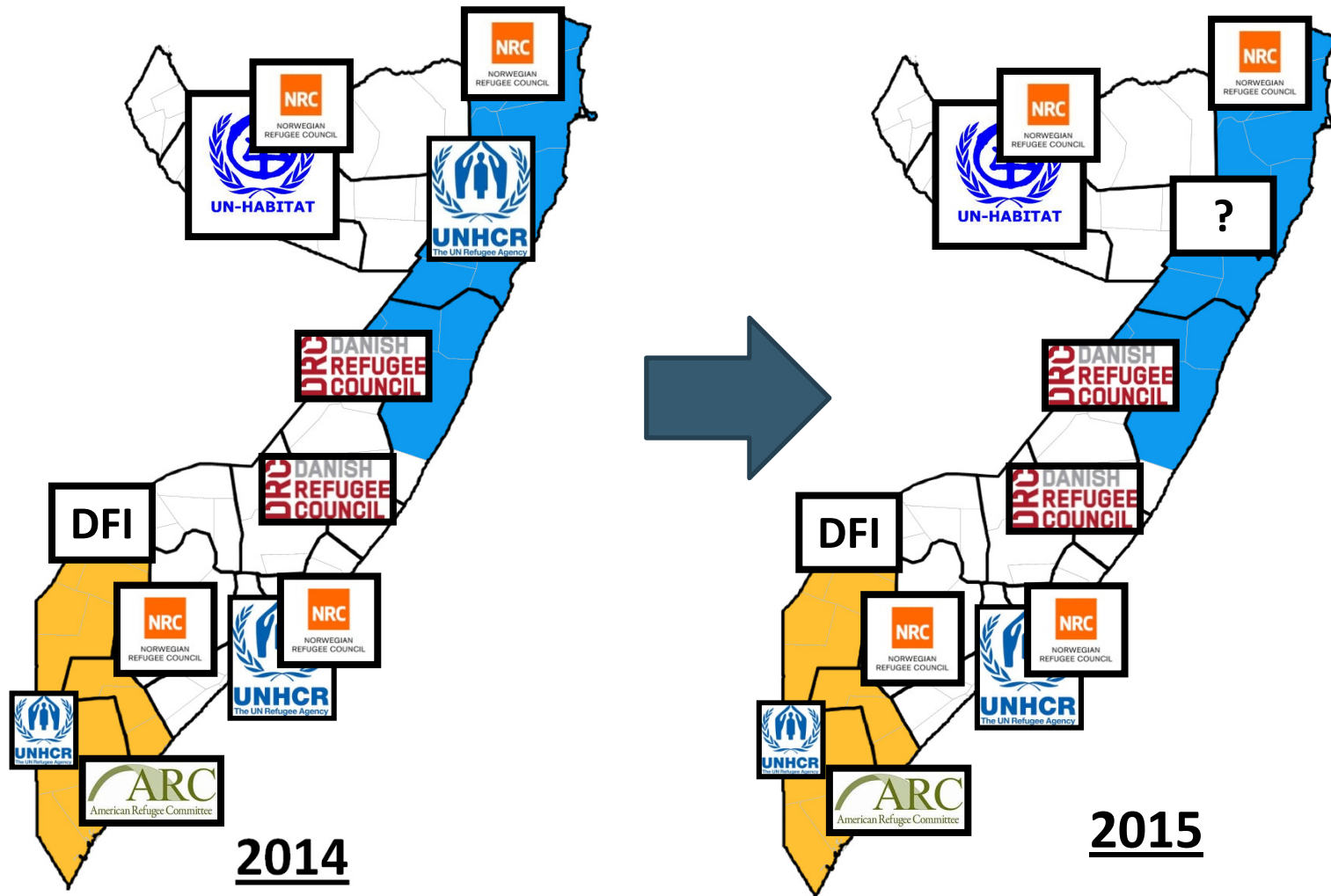
# **CORE ACTIVITIES OF THE REGIONAL COORDINATORS**

- **4W reporting (who, where, when, what)**
- **Coordination of Emergency responses**
- **Advocacy on HLP issues through WG**
- **Coordination of Joint Assessments, including infrastructure mapping**
- **Dissemination of information to members**
- **Promote community consultation process**

# LESSONS LEARNED FROM THE APPROACH

- **Good continuity due to the same persons being appointed (90% same persons)**
- **2 coordination trainings delivered**
- **Improvement in mapping exercises:**
  - 8 mapping exercises finalized (Hargeysa, Bossaso, Gaalkacyo South/North, kismaayo, Luuq, Jowhar and Mogadishu)
  - 9 on-going exercises: Kismaayo, Baidoa, Marka, Beletweyne, Abudwaq, Qardho, Dhobley, Diff and Afmadow.
- **5 organizations using the digital platform**
  - INTERSOS: Post distribution monitoring
  - ARC: Shelter/Protection needs assessments
  - UNHCR: follow-up on refugee returns
  - UNHCR: pre-eviction assessment
  - Diakonie: internal use
- **4W matrix: is being rolled out**

# NO MAIN CHANGES IN STRUCTURE COMBINED UN AND NGO LEAD FIELD STRUCTURES



# **OBJECTIVES FOR 2015**

## **STRONG FOCUS ON CAPACITY BUILDING**

- \* Full roll out of the 4W matrix online
- \* M&E framework and training
- \* Field trainings on framework and roll out
- \* Training of trainers / Workshop in February
- \* Ensuring access to all shelter partners to mobile platform
- \* Continuation of the mapping exercises
- \* Full roll out of rapid inter cluster needs assessment

---

# 4. INFRASTRUCTURE MAPPING EXERCISE

# INFRASTRUCTURE MAPPING

## WHY THE SHELTER CLUSTER TO LEAD THIS PROCESS?

- \*SHELTER CLUSTER = IDP FOCUSED IN SOMALIA OPERATIONS**
- \*SITE PLANNING IS A CORE INTEGRATED ACTIVITY OF SHELTER PROJECTS**
- \*SHELTER IS CROSS CUTTING WITH WASH ACTIVITIES, EDUCATION ACTIVITIES AND PROTECTION ACTIVITIES**
- \*TO PROVIDE A QUICK SNAP SHOT OF THE EXISTING SITUATION THAT CAN BE REPLICATED IN TIME**
- \*CAPACITY OF THE SHELTER PARTNERS IN THE FIELD WHO HAVE MANY IDP FOCUSED PROJECTS**

---

# SUPPORT

**SHELTER CLUSTER SECRETARIAT**



**COORDINATION ROLE  
DIGITAL PLATFORM AND MOBILES  
TRAINING  
ANALYSIS  
MAPPING AND FINAL REPORT**

---

# SUPPORT

**FIELD LEVEL**



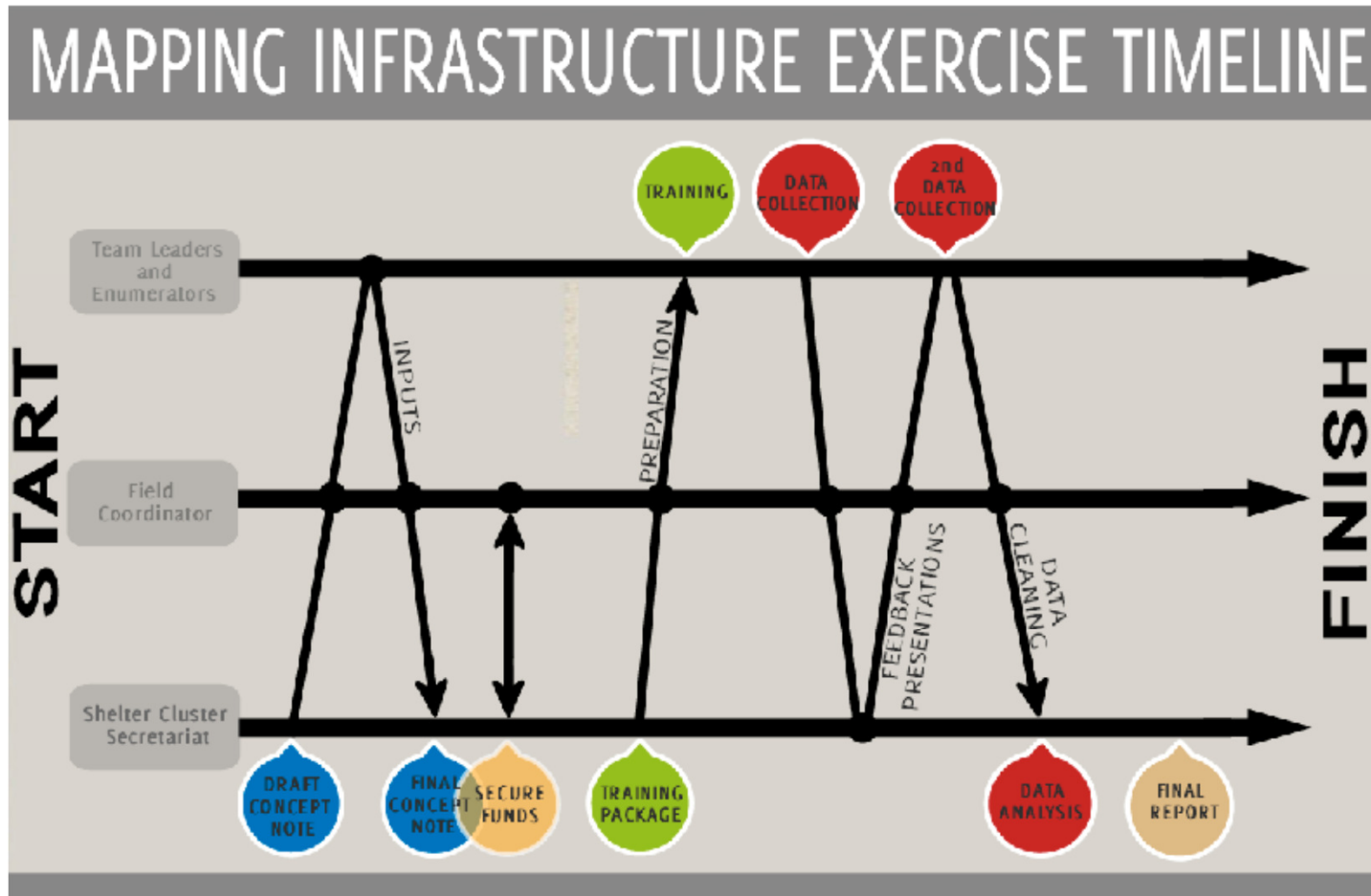
**FUNDS FOR ENUMERATORS  
TRANSPORT  
TRAINING FACILITIES  
UPLOADING CAPACITY  
COORDINATION AUTHORITIES**

---

# USER MANUAL

## INFRASTRUCTURE MAPPING EXERCISE

# AUTOMATION



# VISUALIZATION



**Somalia**  
ShelterCluster.org  
Coordinating Humanitarian Shelter

All Sites

Advanced Search

Home > Africa > Somalia

[Home](#) [About us](#) [Global](#) [Africa](#) [Americas](#) [Asia/Pacific](#) [MENA](#) [References](#)

## Somalia

### Coordination

Cluster Architecture and contacts

ToR

National Cluster

Digital Platform

Strategic Documents

Somalia Maps

### Technical Working Group

Minutes and workplan

Sustainable Shelter Solutions

Housing, Land and Property

Designing Shelters

### Regional clusters

Banadir, Lower Shabelle, Middle Shabelle

Lower Juba, Middle Juba

Gedo

Bay, Bakool

Galgaduud, Hiraaan

Mudug

Nugaal

Bari

Somaliland

### Technical Guidance

Cluster Coordination Tools

Cluster Standardized Tool

Shelter and Settlement

NFI

### CAP

CAP 2013-2015

CAP 2012

## Somalia Shelter/NFI Cluster

**CONTACT LISTS** **SOF** Housing, Land and Property

DESIGNING SHELTER **MAPS** STRATEGIC DOCUMENTS

**CAP2014** CHF WEB PLATFORM

### Objectives of Shelter Cluster Somalia

There are an estimated 1.1 million IDPs in Somalia. The needs of different categories of IDPs, i.e., people who have been IDPs for nearly two decades and those displaced more recently, vary. The cluster will continue to provide emergency assistance to newly displaced people affected by natural and man-made disasters (flood, fire, drought, conflict and evictions). It will distribute a minimum Non-Food Item kit and an Emergency Shelter Kit (if necessary) for those in need. It will also maintain the response capacity to distribute NFI minimum packages for 30,000 households or 120,000 people. This will ensure a timely response to sudden on-set disasters through prepositioned stocks held across Somalia. Programme design will take into account the specific needs of women and, where appropriate, women's dignity kits will also be distributed. As durable solutions are not able to be achieved for all protracted situations, there is also a need to start re-building the resilience of these communities.

The Shelter cluster strategy has three main pillars: **Emergency, Transitional and Durable Solutions**. A fourth pillar which specifically looks at the capacity building/coordination component has been included. Community participation and ownership are underlying themes which are embedded in all cluster activities.

To improve accountability, a digital platform (through mobile technology and GPS tracking) will be provided to all partners to enhance the information sharing, data management and analysis. The provision of a digital platform as a service to all shelter actors is also expected to enhance the accountability of all stakeholders. Post Distribution Monitoring (PDM) will form an integral part of implementation and where there is an unacceptably high risk of diversion of aid, activities may be suspended. Joint needs assessments will be coordinated to ensure that each regional shelter cluster produces an annual analysis of their respective IDP situation regarding shelter, NFIs and land tenure.

### Calendar

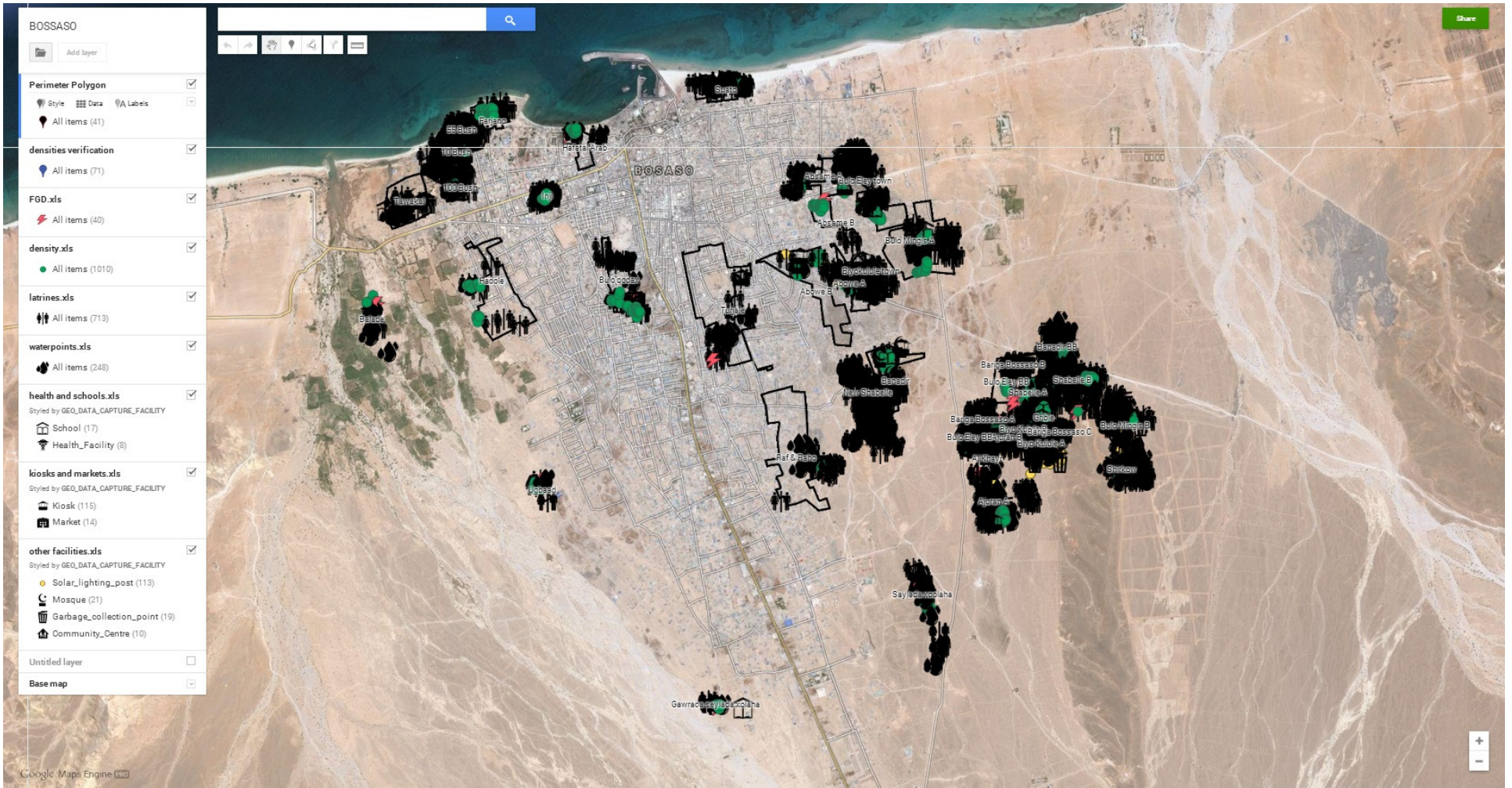
July 2014

M	T	W	T	F	S	S
30	1	2	3	4	5	6
7	8	9	10	11	12	13
14	15	16	17	18	19	20
21	22	23	24	25	26	27



**Global Shelter Cluster**  
ShelterCluster.org  
Coordinating Humanitarian Shelter

# VISUALIZATION





## GOOD EXAMPLES FROM MAPPING

**In this case, the perimeter is clear, the FGD is well located and the densities are well located.**

- Perimeter (251)
- Density (195)
- Facility (136)
- Focus\_Group\_Discussion (19)

**According to the FGD, there are 600 HHs living there. Please take 4 density checks of minimum 15-20 HHs.**



# REPORTS/OUTPUTS

DATA  
SETS

MAPS ONLINE  
(mapsengine)

OVERALL  
REPORT

MAP PDF

---

## **4B. Main changes to the mapping exercise =**

# **DENSITY CHECKS**

## DEFINITION OF SHELTER DENSITY

- For each mapping exercise in each respective urban centre, a **pilot/study** will be undertaken to provide concrete data on shelter densities in 3 pre-identified settlements or sub-settlements (with medium, low and high density)
- Afterwards, **random sampling** in all settlements is done.
- This data will be used afterwards to derive a household estimate. The next slide will give an example as an overview.

HARGEYSA

GAALKACYO

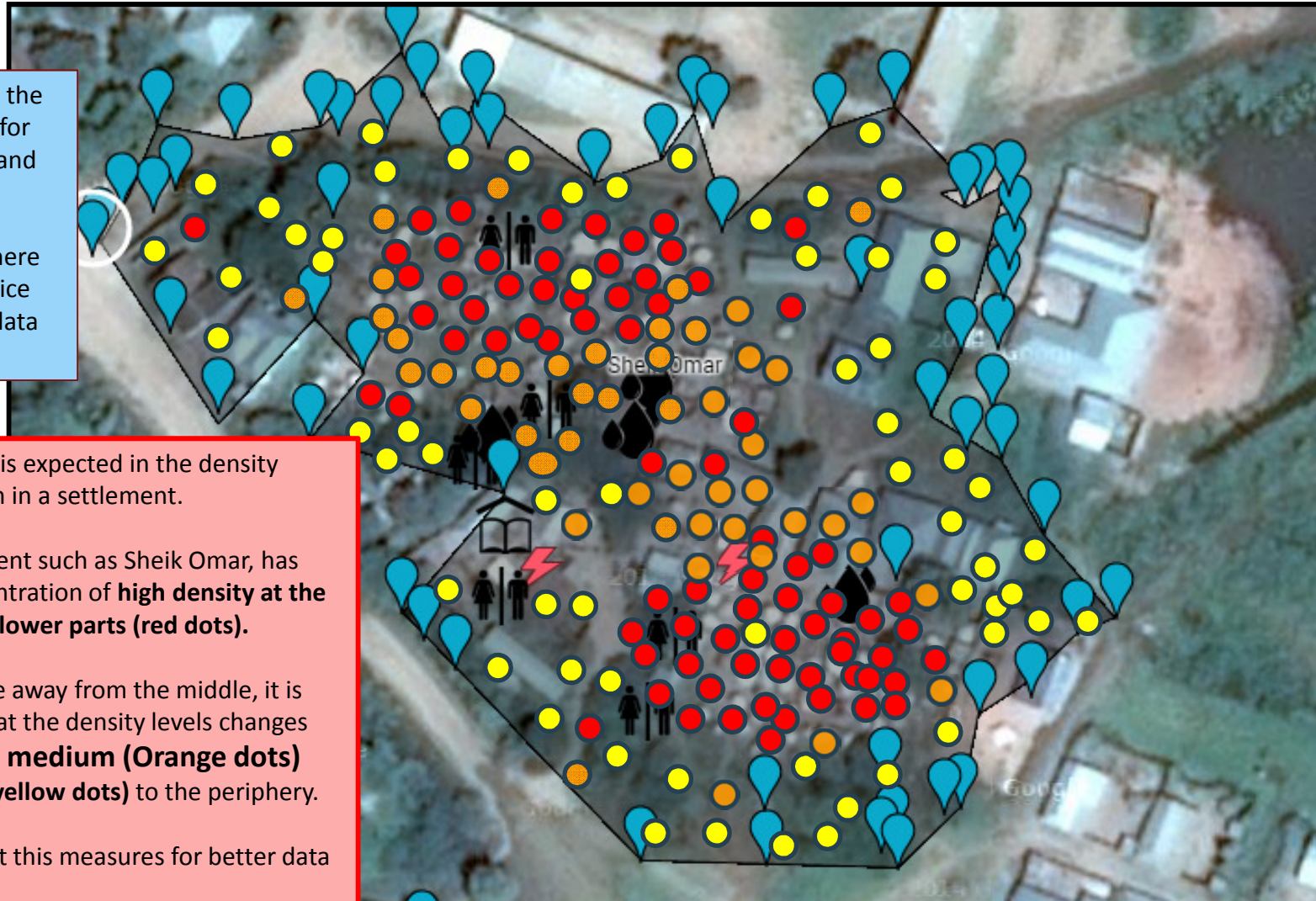
MOGADISHU



**Global Shelter Cluster**  
ShelterCluster.org  
Coordinating Humanitarian Shelter

## EXAMPLE: Overview of the best practice in a case study data capture such as Sheik Omar Settlement (190HH)

We noticed that the density capture for this settlement and others were not captured appropriately, here is the best practice for the density data capture



- This is what is expected in the density classification in a settlement.
- The settlement such as Sheik Omar, has more concentration of **high density at the middle and lower parts (red dots)**.
- As you move away from the middle, it is expected that the density levels changes from high to **medium (Orange dots)** and **lower (yellow dots)** to the periphery.
- Please adopt this measures for better data capture

---

## **5. WORKING GROUP (Sustainable Shelter Solutions Working Group):**

**The aim of the WG is to work  
towards improved accountability  
through a standardization process  
of the project cycle management  
**AND**  
improved sharing of information**

---

**THIS IS DONE BY BUILDING ON  
TOP OF EXISTING TOOLS AND  
GUIDELINES THAT ARE ALREADY  
IN USE.**

# MAIN ACHIEVEMENTS 2014

- Definition paper of sustainable shelter solutions (see website)
- Feed-back on Monitoring and Evaluation framework (will be presented as a draft on Thursday)
- Inter Cluster rapid needs assessment tool
- 4W matrix
- Presentations from WVI/Diakonie/Red Cross and others on owner driven projects, voucher systems, cash projects...

---

**SOMALIA IS VERY DIVERSE AND  
NEEDS LOCALIZED SOLUTIONS  
BUT ACCORDING TO COMMON  
AGREED STANDARDS AND  
METHODOLOGIES**

# 5. AOB