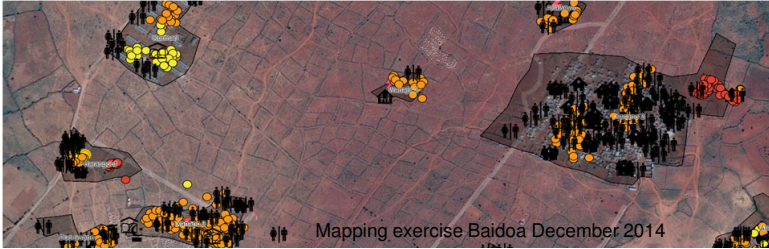


Somalia February 2015



STRATEGIC OBJECTIVES

SO1: contribute to the protection of displaced people, including those affected by natural hazards, through provision of NFIs and Emergency shelter.

SO2: Improve the living conditions of the protected internally displaced persons (T-shelters, permanent shelter and improved land tenure).

NEED ANALYSIS

Somalia continues to face a severe humanitarian crisis with displacement across the country from natural disaster and conflict in 2014. Humanitarian actors operate within insecure environment at great personal risk, and with restricted movement and access.

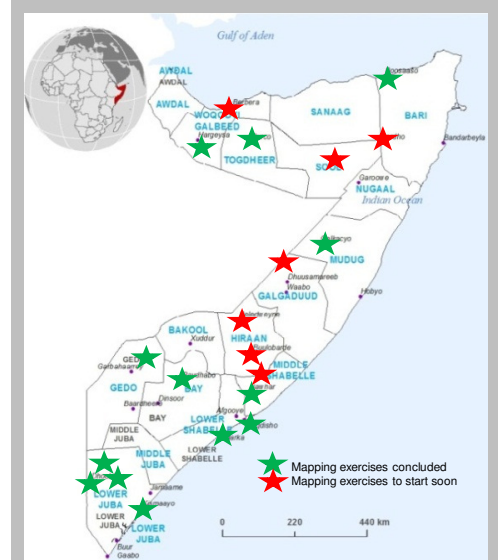
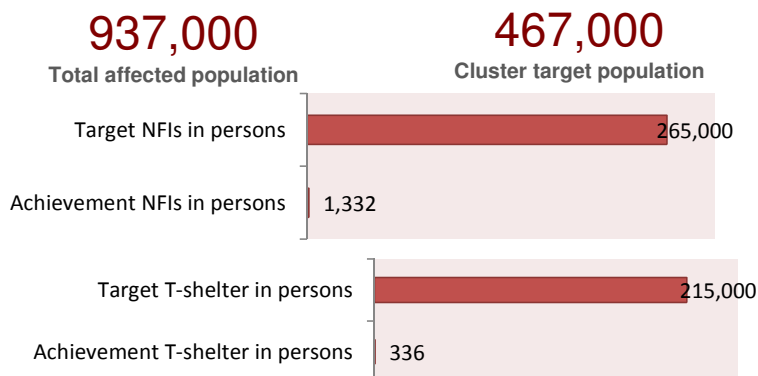
During the month of February, evictions remained a major concern in Mogadishu and Kismaayo. According to an Inter-Agency assessment, 44% mainly female headed households do not have access to any shelters at the new location. Plastic sheeting has been provided to the most vulnerable households. Partners are planning to intervene with EAPs. Fighting erupted in Guri Ceel town (Galgaduud region) between militia and SNAF government troops. 90% of the town was estimated to have been displaced by government troops. Partners are planning to intervene through cash-based interventions.

Many cluster partners are closing down offices in many parts of Puntland and Somaliland due to low funding which results in a thin spread-out of activities. Shelter cluster partners have depleted many of the existing emergency stocks in Somalia. Without continued funding, the Shelter partners will have no resources to intervene in a timely manner.

HIGHLIGHTS

- ❑ While gaps in shelter and NFI needs persist, the Shelter Cluster has pioneered innovative approaches in data collection and remote mapping to improve the baseline information on displaced communities. The Shelter cluster has rolled out the 4W on-line matrix to make reporting evidence and field based.
- ❑ Shelter cluster has advocated strongly with the authorities in various regions for longer term land tenure agreements.
- ❑ Applicants were recommended to apply for the module 1&2 of the Shelter Cluster training that will be organized in April.

KEY FIGURES



KEY DATES

Crises: Clan conflicts; Floods, Military offensive, Drought, Fire and evictions
Activation of Cluster: 2006

CLUSTER TEAM - Contacts

Cluster lead agency : UNHCR
Co-lead: UNHABITAT
Cluster coordinator : Martijn Godderris
Email: Goddeeri@unhcr.org
Telephone: +254 731 560 447

PLANNED MEETINGS

Quarterly Cluster meeting in May
Shelter Cluster training in April

KEY DOCUMENTS - Hyperlinks

Shelter Cluster Somalia
Somalia Cluster Maps
Somalia Cluster Projects

SRP FUNDING - Shelter Cluster

\$ 44 million requested

