

## Somalia August 2015



Ongoing construction of permanent shelters in Burao, Togdheer.

### STRATEGIC OBJECTIVES

SO1: Contribute to the protection of displaced people, including those affected by natural hazards, through provision of NFIs and Emergency shelter.

SO2: Improve the living conditions of the protected internally displaced persons (T-shelters, permanent shelter and improved land tenure).

### NEED ANALYSIS

Constant evictions, clan conflicts and pastoral dropouts are still a major hurdle in the provision of sustainable solutions in South Central. The ongoing military offensive and drought in parts of South Central have also caused new displacements and these households are in dire need of Shelter/NFIs assistance.

Shelter needs remain unmet in most parts of Somalia due to lack of funding and depletion of stocks. Without continued funding, the Shelter partners will have no resources to intervene with in a timely manner.

### HIGHLIGHTS'

- ❑ Displacements due to floods are anticipated as a result of the expected Elniño rains.
- ❑ Displacements increased as a result of the ongoing military offensive, pastoral dropouts and drought in parts of South central.
- ❑ Shelter cluster has advocated strongly with the authorities in various regions for longer term land tenure agreements

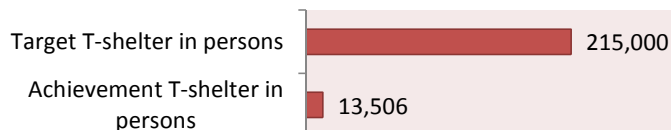
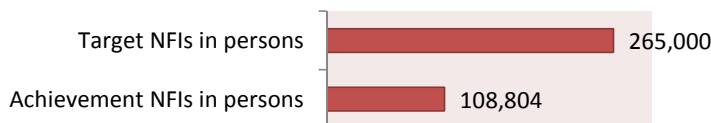
### KEY FIGURES

**937,000**

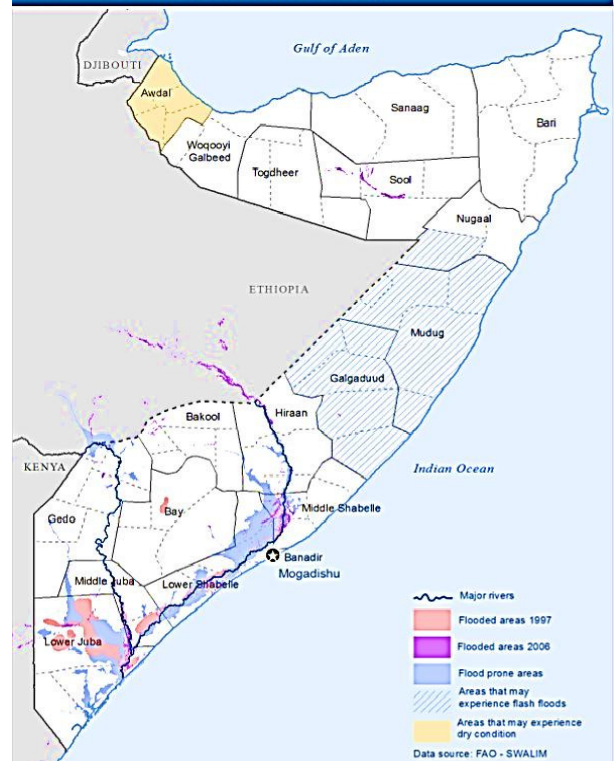
Total affected population

**467,000**

Cluster target population



### SOMALIA: AREAS THAT MAY BE AFFECTED BY EL NIÑO



### KEY DATES

Crises: Floods, Clan conflicts, Military offensive, Drought, Fire and evictions  
 Activation of Cluster: 2006

### CLUSTER TEAM - Contacts

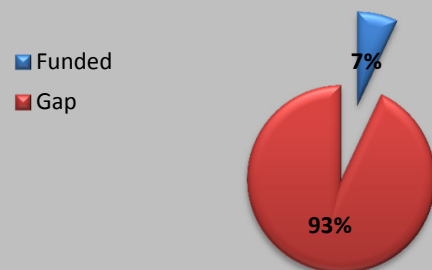
Cluster lead agency : UNHCR  
 Co-lead: UNHABITAT  
 Cluster coordinator : Martijn Goddeeris  
 Email: Goddeeri@unhcr.org  
 Telephone: +254 731 560 447

### KEY DOCUMENTS - Website

Shelter Cluster Somalia  
 Somalia Cluster Maps  
 Somalia Cluster Projects

### SRP FUNDING - Shelter Cluster

\$ 44 million requested



## Focus story: El Niño threatens Somalia's humanitarian gains



Global weather experts have warned that much higher than normal rains are expected in the last third of 2015, which could result to the El Niño climate phenomenon. This phenomenon could reverse many of the humanitarian and development gains that have been made in the southern parts of Somalia.

El Niño, a warming of sea-surface temperature in the Pacific Ocean, occurs every few years and is associated with very heavy rainfall in East Africa and drought-like conditions in other parts of the region. The scale of impact varies, but experts warn that this year's El Niño could match the intensity of recent severe El Niño weather events, including the 1997-98 weather patterns which left large parts of southern Somalia underwater and killed 2,000 people.

"While some countries experience depressed rains during El Niño events, Somalia experiences heavier rainfall amounts that usually lead to flooding causing diseases, death and destruction of property and infrastructure," said Hussein Gadain, the Chief Technical Advisor of FAO Water and Land Information Management unit (SWALIM). Estimated populations of 900,000 people living in the riverine areas of the Juba and Shabelle rivers are likely to be affected by the El Niño floods if it materializes.

The early warnings have spurred humanitarian partners into action and they are currently working together to identify possible preparatory and early response actions that will strengthen the ability of households in possible flood-affected areas to better prepare, respond and recover from major flood events, should they occur. The humanitarian partners are also calling for urgent early action to prepare the riverine populations to cope with the flooding and enable fast recovery.

The 1997-8 El Niño was the worst in recent memory, causing massive flooding along the riverine areas in Somalia which led to major displacements and deaths. Other El Niño events, such as in 2005-06, were less severe, but still caused significant damage and displacements.

Somalia community is fragile and has very low household resilience levels due to the on-and-off civil war that has been ongoing for the last two decades. The ability of the population to cope with natural disasters has generally waned.

A meeting organized by IGAD's Climate Predictions and Applications Centre (ICPAC) on 24-25 August in Tanzania brought together climate experts from around the region and world to produce a consolidated outlook on regional weather forecast for the September-December 2015 rainy season.

### Cluster Challenges

- Lack of consistent reporting by cluster partners hampers the visibility of shelter cluster and effective/efficient coordination.
- Decreasing funding of shelter activities has grossly affected the capacity of cluster partners to respond whilst shelter needs have increased significantly due to forced evictions, conflicts and flooding.
- Restricted humanitarian access due to insecurity continues to affect the provision of assistance to the affected people in some parts of south and central Somalia.
- Emergency Shelter/NFI stocks need to be replenished to allow for further contingencies.
- IJA authorities need to finalize solutions for issuance of land since it has affected the shelter cluster interventions

### Key Links : Who is doing what where in Shelter

Shelter maps: <https://www.sheltercluster.org/library/somalia-maps>

Shelter typologies: <http://www.unhcr-nairobi-hub.org/toolkit/>