

**Before**

# Gorakha Earthquake 2015

**Now**

## Earthquake Reconstruction

# Reconstruction Technology Centre



**NSET**

[www.nset.org.np](http://www.nset.org.np)



# Introduction

- **Widespread damage geographically and large scale damage in terms of number of houses**
- **Need to provide technical information and support in a way that is accessible for the affected communities**
- **Reconstruction Technology Centres decentralise technical information, awareness/trainings and demonstration**
- **Provide coordination hub for all activities related to reconstruction**
- **Building Back Better will require investment in large scale, accessible, technical assistance and training**

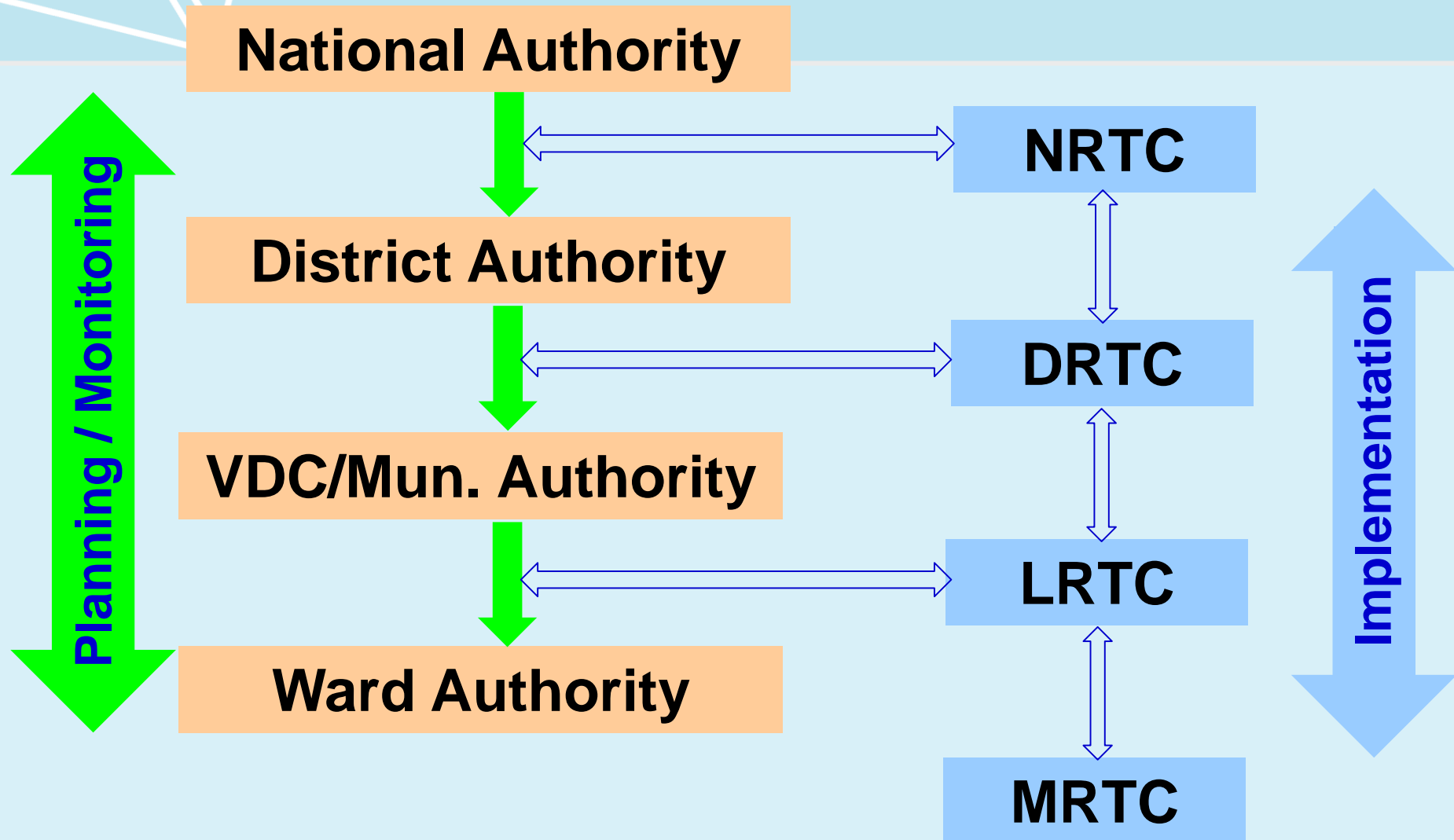


# Levels of RTC

- **National Reconstruction Technology Centre**
- **District Reconstruction Technology Centre (DRTC) 1 in each affected districts, 14 units)**
- **Local Reconstruction Technology Centre (LRTC) 3 in each District, 42 units**
- **Mobile Reconstruction Technology Centre (MRTC) 1 in each VDC / 400-500 units.**



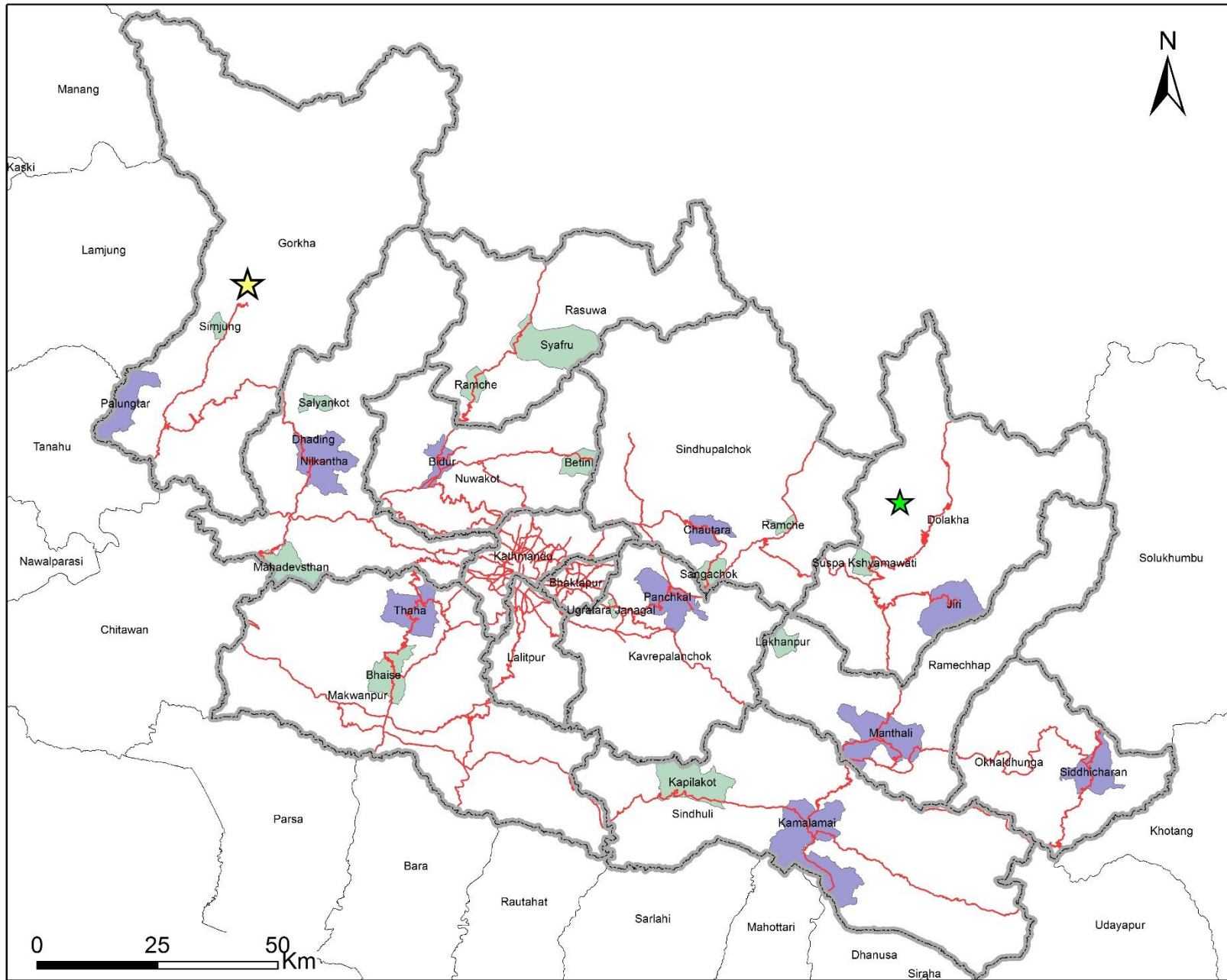
# Implementation Mechanism











# Composition of RTCs at Different levels

- **NRTC,**
- **DRTC, 2-6 Engineers, 6 Social Senior Staff, 3 Information Management Officers, 3 Admin / Support Staff, 3 Communications Officers, 4 Vehicles**
- **LRTC, 2 Engineers, 2 Social Senior Staff, 2 Masons, 2 Field Social Staff, 1 Information Management Officer, 1 Admin / Support Staff, 1 Communications Officer, 2 vehicles**
- **MRTC, 1 Engineer, 1 Field Social Staff, 1 Mason**



**GORKHA EARTHQUAKE 2015**  
**Affected District**  
**Proposed Location for ERTDC**

**Legend**

-  Barpak\_25April
-  Chilankha\_12\_May
-  Affected District
-  Major Road
- CODE**
-  Municipality
-  VDC

GLIDE number: EQ-2015-000048-NPL



Disclaimer: This product is based on data gathered till the time and source mentioned herein and subject to change as per time and data.

Prepared by: National Society for Earthquake Technology - Nepal (NSET), with the support from: USAID/OFDA  
 Data Source: USGS-PAGER, NSET, KVDA, CBS, DoS/GoN, NSC/DMG

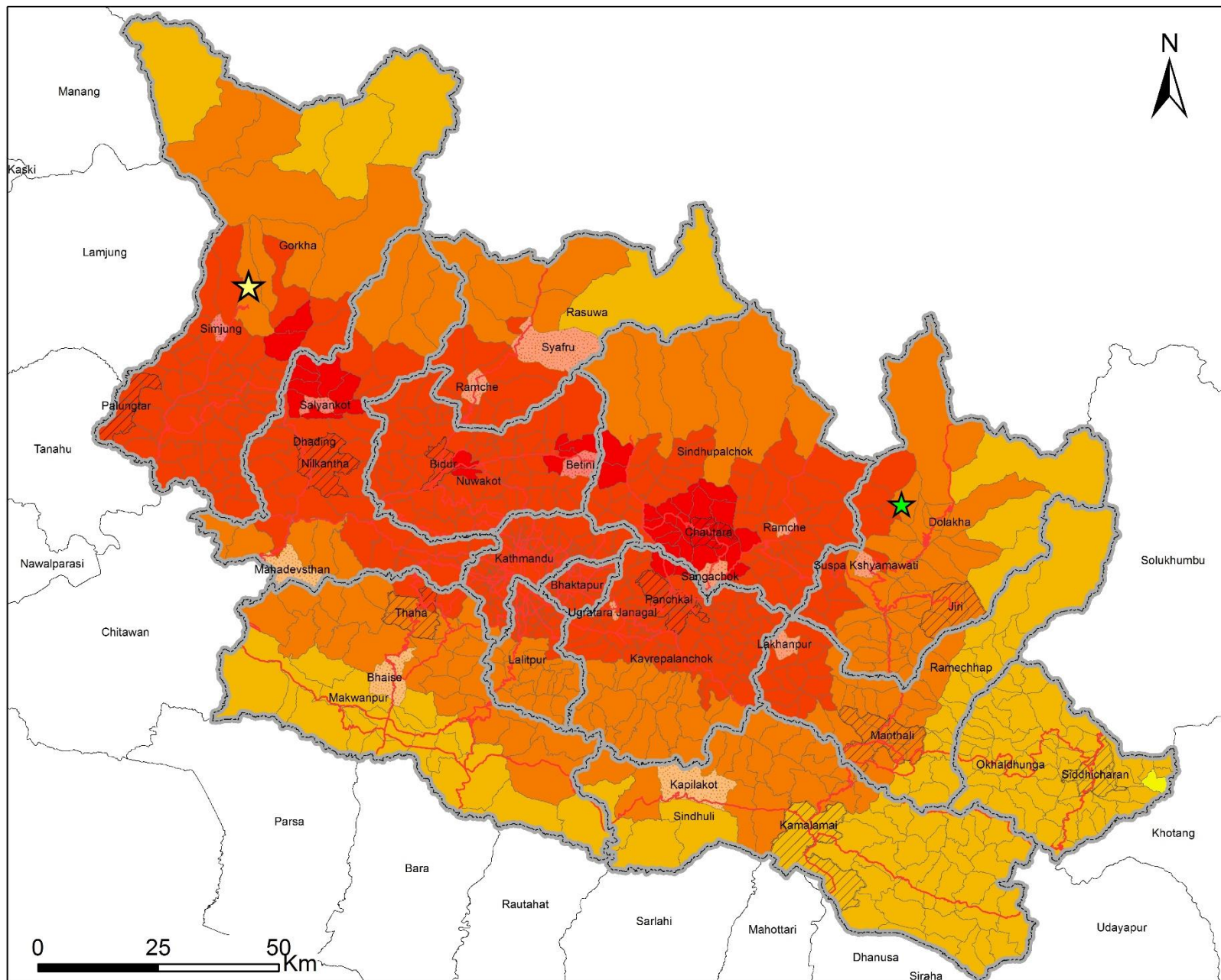


Situation Map  
 Date: 2015/05/17  
 Time: 12:00 pm

# GORKHA EARTHQUAKE 2015

## Affected District

### Proposed Location for ERTDC



### Legend






-  Barpak\_25April
-  Chilankha\_12\_May

-  Affected District
-  Major Road

### CODE

-  Municipality
-  VDC

### Intensity

-  <V
-  V- VI
-  VI - VII
-  VII - VIII
-  > VIII

GLIDE number: EQ-2015-000048-NPL



**NEPAL**

Disclaimer: This product is based on data gathered till the time and source mentioned herein and subject to change as per time and data.

Prepared by: National Society for Earthquake Technology - Nepal (NSET), with the support from: USAID/OFDA  
Data Source: USGS-PAGER, NSET, KVDA, CBS, DoS/GoN, NSC/DMG

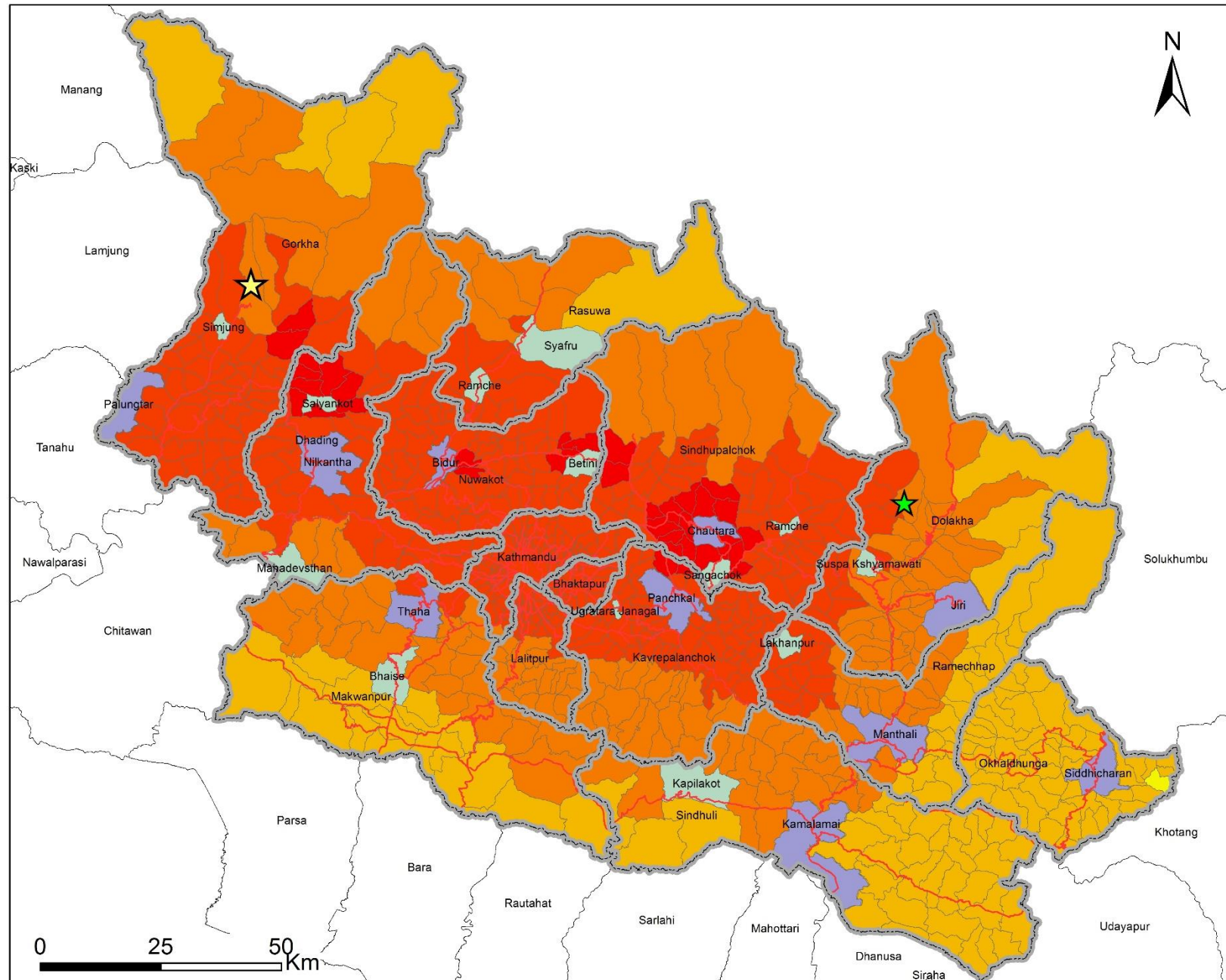


Situation Map  
Date: 2015/05/17  
Time: 12:00 pm

# GORKHA EARTHQUAKE 2015

## Affected District

### Proposed Location for ERTDC



### Legend

- Barpak\_25April
- Chilankha\_12\_May

- Affected District
- Major Road

### CODE

- Municipality
- VDC

### Intensity

- < V
- V - VI
- VI - VII
- VII - VIII
- > VIII

GLIDE number: EQ-2015-000048-NPL



**NEPAL**

Disclaimer: This product is based on data gathered till the time and source mentioned herein and subject to change as per time and data.

Prepared by: National Society for Earthquake Technology - Nepal (NSET), with the support from: USAID/OFDA  
Data Source: USGS-PAGER, NSET, KVDA, CBS, DoS/GoN, NSC/DMG



**USAID**  
FROM THE AMERICAN PEOPLE



Situation Map  
Date: 2015/05/17  
Time: 12:00 pm



# Estimated Costs

- **DRTC = ~21,000 USD / month**
- **LRTC = ~10,000 USD / month**
- **MRTC = ~2,500 USD / month**



# RTC ToR

- **Common ToR to be prepared and adopted**
- **RTC expected to provide several key services:**
  - Facilitating Coordination
  - Providing Information and Advice
  - Facilitate training and awareness activities
  - Monitoring Reconstruction

