

HIGHLIGHTS

Shelter Cluster partners with the Government of Fiji have distributed over 27,600 households worth of emergency shelter, including tents, tarpaulins, shelter kits and shelter tool kits, and have distributed over 50,000 shelter items in total over the Flash Appeal period. Residual emergency shelter gaps have been identified but cluster partners have indicated that they have, or may have, the capacity to respond. A three day “Training the Trainers” pilot technical training program was run by Shelter Cluster in early May. This trained those within humanitarian organizations to roll out their own trainings in early recovery, to target both owner-builders and skilled/semi-skilled carpenters and focusing on safer construction practices and build back safer methods thereby complementing the Government’s Help for Homes Initiative. The Shelter Cluster has collaborated with the Government of Fiji to include build back safer posters and key messages at the voucher card distributions sites and are awaiting results of the outreach.

CLUSTER STRATEGY AND OBJECTIVES

To support owner-driven recovery by investing in disaster preparedness and risk reduction while prioritizing the most vulnerable households and communities.

Objective 1: Provision of emergency shelter and NFI, with supporting IEC.

Objective 2: Support to self-recovery to repair and rebuild damaged house with hardware or cash/voucher equivalent and appropriate training and IEC material.

Objective 3: Along with IEC, provide technical training on building back safer for skilled/semi-skilled carpenters.

CONTEXT AND RESPONSE

Category 5 Tropical Cyclone Winston was the most severe ever recorded in the South Pacific, affecting Fiji 20th February 2016, and the government declared a State of Natural Disaster for 60 days and officially requested international assistance. The Flash Appeal Period ended on 21st May with the shelter sector only 21% funded. The Ministry of Local Government, Housing & Environment leads the Shelter Cluster. The response to date has focused on emergency shelter assistance, and the Shelter Cluster is working closely with government to address identified gaps and duplication as well as advocating for further funding and support to owner-driven recovery and build back safer awareness and further technical training to complement the Government’s Help for Homes Initiative.

CHALLENGES

Critical funding gaps remain for Shelter Cluster partners in this transition to recovery to carry out technical training programs and build back safer message dissemination, as well as a lack of funding for programs supporting those most vulnerable with repair or retro-fit of damaged homes or construction of core shelters for those with completely destroyed homes. It is imperative that owner-builder led recovery initiatives be informed by the principles of BBS, therefore funding for training and BBS awareness remains a top priority for recovery.

Key Figures

Total affected population:	350'000 people
Cluster target population:	31'200 HH
Total houses destroyed:	11'500 units
Total houses damaged:	19'700 units

FLASH Appeal

Funding Needs (USD):	5.26m
Funding Available (USD):	1.1m (21%)

Response:	Target	Reached
Emergency shelter (HH)	31'200	89%
Support Self-Recovery (HH)	9'000	11%
Technical Training (People)	780	0%

Settlement type:	HH	%
Urban households	10'186	33%
Rural households	21'025	67%

Cluster:

Cluster Lead	Ministry of Local Government, Housing & Environment
Co-lead Agency	IFRC
No. of cluster partners	15
No. of staff dedicated to the cluster	3

Key Dates

- Crisis:** 20 February 2016
- Activation of Cluster:** 27 February 2016
- Deployment:** 28 February 2016
- End of State of Natural Disaster:** 19 April 2016
- Flash Appeal Period:** 21 February to 21 May, 2016
- GLIDE:** 2016-000014

Cluster Coordinator (Acting): Ryan Smith
Email: im1.fiji@sheltercluster.org
Phone: +679 973 4595

Global Shelter Cluster Focal Point: Pablo Medina
Email: pablo.medina@ifrc.org
www.sheltercluster.org

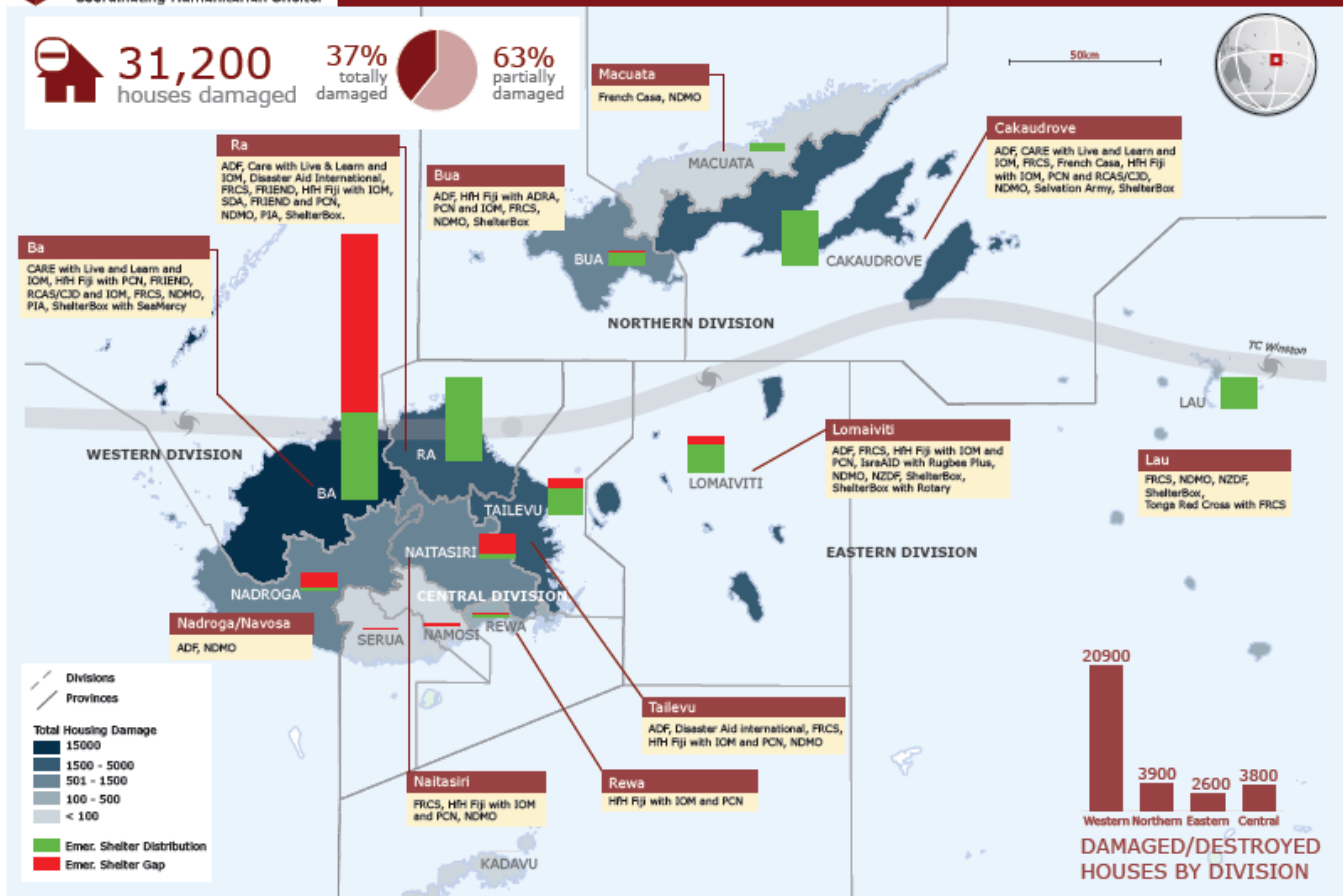
Situation Analysis

3W Reported Activities (29th May 2016)

Indicators	Need	Target*	Result**	Current Gap	Projection**	
					Ongoing, Planned, Pipeline	Remaining Projected Gap
Objective 1 - Emergency shelter						
1.1 No. of households (sex/age/vulnerable group) received some form of emergency shelter, including tarpaulins, tents, shelter kits, tool kits.	31,200 HH	31,200 HH	27,693 HH	3,508 HH	4,596 HH	(1,089) HH
1.2 No. of total emergency shelter items & NFI distributed	50,000 items	50,000 items	51,155 items	(1,155) items	5,066 items	(6,221) items
Objective 2 - Support to Self Recovery						
2.1 No. of households (sex/age/vulnerable group) receive a core shelter, including vulnerable groups.	11,500 HH	3,400 HH	- HH	3,400 HH	- HH	3,400 HH
2.2 No. of vulnerable households who receive shelter fixing kits, materials or a cash/voucher equivalent, including vulnerable groups.	19,700 HH	5,600 HH	1,014 HH	4,586 HH	- HH	4,586 HH
Objective 3 - Technical Support						
3.1 No. of vulnerable households reached through public awareness, through mass IEC dissemination (excluding training)	31,200 HH	31,200 HH	- HH	31,200 HH	- HH	31,200 HH
3.2 No. of household have received emergency shelter awareness (for shelter kit, tents, tarps, tool kits)	31,200 HH	31,200 HH	11,587 HH	19,614 HH	4,596 HH	15,018 HH
3.3 No. of households have received BBS awareness (to repairs, retrofit, building core shelter)	31,200 HH	9,000 HH	946 HH	8,054 HH	206 HH	7,848 HH
3.4 No. of semi-skilled/skilled carpenters receive BBS technical training	1 carpenter per 40 HH	780 carpenters	- HH	780 carpenters	- HH	780 carpenters
*Targeting based on either full caseload or estimations of number of HH living under the poverty line with completely/partially destroyed houses					Situational Analysis data is sourced from agency reported 3Ws, and is accurate up to the last previous inter-sectoral 3W update.	
**Where HH data is missing, assumptions were made on the number of HH reached with emergency shelter interventions. The assumption is HH received either an average of 2 tarps, or 1 tent, or 1 shelter box, or 1 shelter kit, or 1 tool kit, and that there weren't multiple items distributed to the same one HH.						



TC Winston - Flash Appeal Overview (as of 29th May 2016)



The activities shown are completed and assumed completed distributions of tarpaulins, tents, shelter kits and shelter tool kits measured in estimated number of households reached (assuming no duplication). Data sourced from and assumptions based on available 3Ws, situation reports and stock dispatch reports. It is assumed that there have been no distributions completed than what is represented on this map.



Ministry of Local Government, Housing & Environment



Shelter Cluster Fiji
 ShelterCluster.org
 Coordinating Humanitarian Shelter



International Federation of Red Cross and Red Crescent Societies
www.ifrc.org Saving lives, changing minds.