



Afgoye Corridor IDPs Emergency Shelters - AVORD

## CLUSTER SPECIFIC OBJECTIVES

- SO1: Contribute to the protection of newly displaced people and those affected by natural hazards. (NFIs, ESKs)
- SO2: Improve the living conditions of the protracted internally displaced persons (Transitional shelters, NFIs)
- SO3: Facilitate access to durable solutions for IDPs that are willing to locally integrate or return (Permanent shelters)

## NEEDS ANALYSIS

- Close to half of the 1,060,000 people displaced in 2017 by drought and conflict remain in need of emergency Shelter and NFIs assistance. Majority of them are in and around Baidoa, Mogadishu and Afgoye corridor.
- An additional 1.0 million are protracted displaced and require support to improve their living conditions.
- Safe and secure settlements are needed to provide crisis-affected communities with protected and healthy living spaces and environments, while ensuring sufficient privacy and dignity.

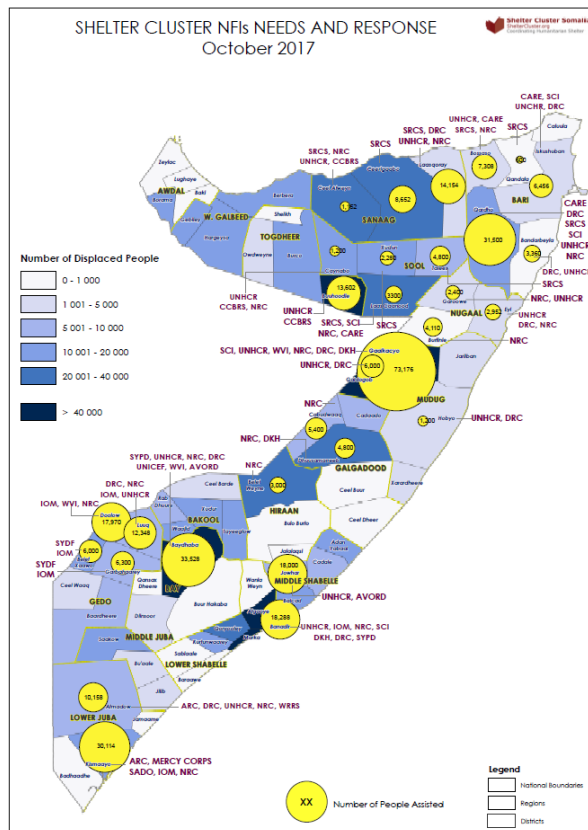
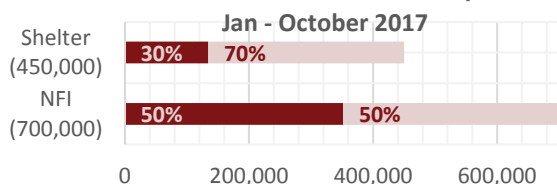
## GAPS / CHALLENGES

- Drought displacements are now taking a protracted trend, with many of those displaced in 2017 not planning to return to areas of origin.
- Many IDP settlements risk evictions for lack of secure tenure. Advocacy is needed to reduce secondary displacements.
- The current drier rains and flooding are causing further damage to already weak shelters, leaving many without shelter.
- Effective delivery of assistance is hampered by limited access, insecurity, road blocks / check points and poor road network..
- Low funding for Shelter and NFIs has left no stocks prepositioned for emergency response.

## RESPONSE

- 32,446 persons received Non Food Items (NFIs) in October
- 6,600 persons received Emergency Shelter assistance in October

## COVERAGE AGAINST TARGETS (Individuals)



## SHELTER CLUSTER CONTACTS

Senior Shelter Cluster Coordinator  
Timothy Mulwa Mutunga  
[mutunga@unhcr.org](mailto:mutunga@unhcr.org) / +252 618254850

Shelter Cluster Coordinator  
Nurta Mohamed Adan  
[adan@unhcr.org](mailto:adan@unhcr.org) / +252 615682233

Shelter Cluster Support Associate  
Padmore Ochieng Okal  
[okal@unhcr.org](mailto:okal@unhcr.org) / +254 723 793 105

## KEY DOCUMENTS

- <https://www.sheltercluster.org/response/somalia>

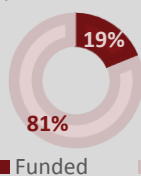
## KEY LINKS

- <https://www.humanitarianresponse.info/en/operations/somalia/emergency-shelter-and-nfi>
- <http://reliefweb.int/country/som>

## KEY FIGURES

**22** Cluster partners  
**1.8M / 0.7M** People in need / targeted

**FUNDING** (source: OCHA Financial Tracking Service)



Total funding required:  
**74 M**

■ Funded ■ Gap

## REACHING IDPs IN AFGOYE CORRIDOR WITH SHELTER ASSISTANCE

Since the escalation of the conflict in Lower Shabelle, IDP evictions from Mogadishu city centre, and displacements due to drought that hit Somalia in 2016 and 2017, the area to the west of Mogadishu, known as the Afgoye corridor, has seen the growth of spontaneous IDP settlements. The settlements are located on both sides of the main road that connects Mogadishu and Afgoi town and onwards to Baidoa Luuq and Dolow, between Kilometres (KM) 7 and 20. In 2017 alone, Afgoye corridor has received more than 200,000 new IDPs.

Forced evictions that have occurred from 2013 to 2015 have pushed IDP households from km 6/7 of the Afgoye corridor until km 14 and into new areas in Kaxda district. From 2015 to date protection partners have recorded approximately 150,000 individuals as having been forcibly evicted in Southern Somalia, with over 95% of them taking place in Mogadishu. In 2017 alone, Clan conflicts and conflict between Amisom backed Somali National Forces in Marka and Kurtunwarey districts resulted into displacements of over 100,000 people into Afgoye Corridor.

These new IDPs are faced with a myriad of challenges, with shelter and access to food and livelihoods being their major problems. Families live in small makeshift structures made of rugs, recycled cloth and cardboards. These structures are insufficient in so far as providing the basic physical protection, privacy, dignity, or protection from extreme climatic conditions. Compounding the problems is the fact that most humanitarian actors do not have real access to most of these areas due to the insecurity posed by the presence of armed non-state actors. Only a very few national humanitarian organizations have some limited access.

With funds obtained from the Belgian government, UNHCR has in the last two months partnered with African Volunteers for Relief and Development (AVORD), a local NGO, to provide some 3000 families in Afgoye corridor with emergency shelter kits. Each kit costs around \$200 and provides basic shelter

for the most vulnerable newly displaced families.



Emergency shelters in Afgoye corridor through Belgian aid - AVORD

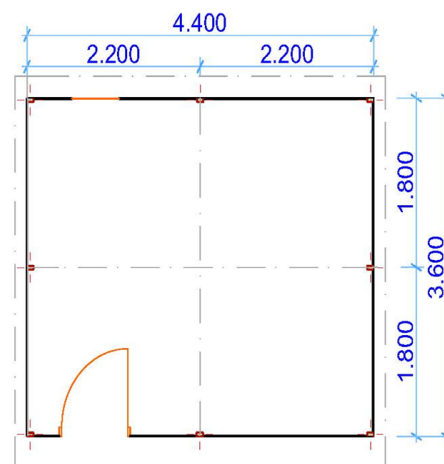
Each kit consists of plastic sheeting, wooden poles for the structure, plastic rope and a lockable door. The items, apart from the doors, were distributed through a voucher system, where the beneficiaries would use the provided voucher to redeem the items listed in the voucher from a selected vendor.

The beneficiaries were also provided construction tool kit and trained on how to erect their own

shelters using the shelter kit provided.

Plans are underway to target an additional 1500 displaced families whose shelters have been damaged by the current rains.

This assistance, although looking like a drop in the ocean, due to the magnitude of the needs in Afgoye corridor, has gone a long way in providing dignity and protection to several individuals who now have the benefit of living under improved living spaces, allowing them to pay more attention and focus to livelihoods.



Typical Plan of the ESK