



Transitional shelters for protracted IDPs in Doolow – Photo by Abdi Gudle, NRC Somalia

CLUSTER SPECIFIC OBJECTIVES

- SO1: Contribute to the protection of newly displaced people and those affected by natural hazards. (NFIs, ESKs)
- SO2: Improve the living conditions of the protracted internally displaced persons (Transitional shelters, NFIs)
- SO3: Facilitate access to durable solutions for IDPs that are willing to locally integrate or return (Permanent shelters)

NEEDS ANALYSIS

- There are about 2.6 million people internally displaced in Somalia currently. Most of the IDPs are living in crowded settlements, with insufficient access to basic services. Their living conditions are very poor, raising protection and health concerns. The IDPs remain in need of improved Shelter and NFIs support, for protection from harsh climatic conditions, and to improve their chances of accessing livelihoods. Once displaced, IDPs situation remains unchanged due to lack of access to productive assets and durable solutions. Their humanitarian needs therefore continue to remain the same.

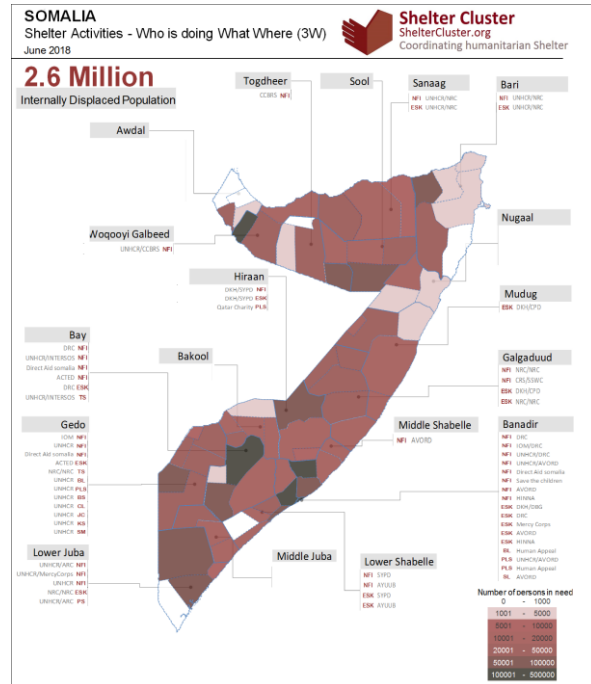
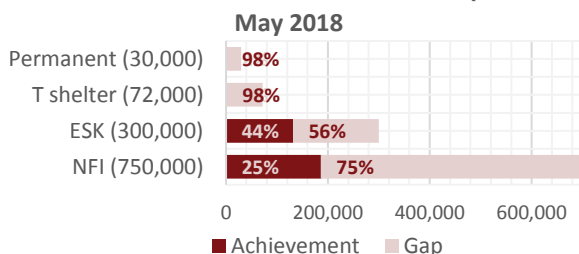
GAPS / CHALLENGES

- Timely response is hampered by lack of sufficient funding for the shelter response, to respond timely and to have contingency plan in place.
- Lack of public land to relocate IDPs who do not have the option to return and need durable solutions. In some cases when land is provided by the government, partners lack sufficient resources to support them once they are relocated.
- Transitional and more sustainable support to IDPs facing protracted displacement has diminished, with attention focused on addressing new emergencies.

RESPONSE

In June 2018: 23,133 persons were assisted with emergency non-food items kit. The kit includes plastic sheeting, blankets, jerry cans, sleeping mats and kitchen sets. 32,923 persons have been assisted with Emergency Shelter Kits. An emergency shelter kit includes plastic sheets, supporting poles and a rope for tying down the structure. This provides the most basic shelter which can offer protection from extreme weather. 1030 persons have been assisted with Transitional Shelter. 1,272 people were supported with plastic sheets; 10,800 received blankets, 1,998 received Jerrycans, 9,084 received sleeping mats, and 1,800 received soap.

COVERAGE AGAINST TARGETS (Individuals)



SHELTER CLUSTER CONTACTS

Cluster Coordinator
Nurta Mohamed Adan
adan@unhcr.org / +252 615682233

Shelter Cluster Support Associate
Padmore Ochieng Okal
okal@unhcr.org / +254 723 793 105

KEY DOCUMENTS

- <https://www.sheltercluster.org/response/somalia>

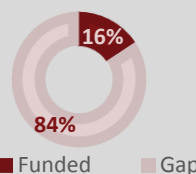
KEY LINKS

- <https://www.humanitarianresponse.info/en/operations/somalia/emergency-shelter-and-nfi>
- <http://reliefweb.int/country/som>

KEY FIGURES

24 Cluster partners **1.5M / 1.3M** People in need / targeted

FUNDING (source: OCHA Financial Tracking Service)



Total funding required:
70 M

IMPROVING THE LIVES OF THE DISPLACED THROUGH TRANSITIONAL SHELTERS

Abdirahman Hussein Aden is a 34 year old father of six children. He lives in Dollow town with his wife, mother-in-law and his children. Abdirahman initially came from Jabi village in Bulahawa district in Gedo region which is roughly 60kms from Dollow town. While in Jabi, Abdirahman used to work as a gravel collector which was used for construction works and he also had 50 goats and 10 cows.



Before assistance, Abdirahman's family in front of traditionally improvised buul.

Due to the severe drought, in which he lost all his livestock, and insecurity in their village of origin, Abdirahman was forced to shift with his entire family to Qansahley IDP camp in Dollow which was considered safer. He was also drawn by the prospects of benefiting from humanitarian intervention was under way in Dollow since there was many humanitarian organizations stationed in the area.

Abdirahman stayed in Qansahley for 5 yrs without getting any humanitarian assistance. He lived in a makeshift shelter (buul) made of rags and sticks and it couldn't accommodate the whole family. Additionally, the makeshift shelter got burnt down several times due to heavy winds in Dolow. Luckily there was no loss of properties and lives. According to Abdirahman, there was no privacy, safety and thermal comfort for makeshifts. Thefts were dominant during the day and night.

In July 2017, NRC, with funds from DFID, started a transitional shelter project in Dollow. The project was aimed at improving the living standards of the IDPs and the vulnerable host communities in Somalia and also those who are in hard to reach areas, Dollow was one of the district that benefited from the project hence 150 beneficiaries were targeted from Dollow IDPs who were seriously in need of the Hybrid shelters. The beneficiaries mainly came from Kabasa and Qansahley IDP camps in Dollow.

Abdirahman was lucky enough to be one of the beneficiaries of the Hybrid shelter in Qansahley and therefore he can now afford to smile after getting the shelter.

NRC prior to the selection of the beneficiaries developed a unique selection criteria in close coordination with shelter cluster in Dolow. Selection used for beneficiaries' identification and selection were: drought affected households that had lost livelihood and not able to

construct their own shelters; households with large family members; households with chronically ill members who are bedridden; female headed households with lactating and pregnant mothers; and child headed households who are able to meet their shelter needs



After assistance, Abdirahman's family in front of the hybrid shelter provided by NRC

The hybrid shelter falls into the category of transitional assistance to Somali IDPs. In Somalia, transitional shelter solutions are provided relevant to the displacement situation and take into account prevailing tenure considerations in stabilized IDP settlements that have traditionally been located in and around the urban centres. Transitional shelter is an incremental process that supports households affected by conflicts and disasters as they seek to maintain alternative options for their recovery. The concept of transitional shelter fits well within the focus of resilience and sustainability. The typology depends on factors including land tenure, funding levels, specific needs, agency experience, support from local authorities, and beneficiary preferences.

These particular hybrid shelters measure 4.4m by 5m, and includes a verandah. Although, an owner driven process is preferred in Somalia, these shelters were done through contractor through NRC competitive procurement process due to time limitation.

Each shelter unit costs about \$1,200, and is built incorporating the philosophy of "building back safer". This ia another way of saying that the structures are constructed to withstand, as much as possible, the prevailing risks that may cause damage. These include floods, stong winds, and extreme temperatures.

Materials used include, hollow cement blocks up to 1.5M, strong plywood, iron sheets, and timbers with different sizes and hardcore for foundations which are environmentally friendly.

Now with the provision of the hybrid shelter, Abdirahman feels safe against protection risks such as fire, theft, cold and scorching sun. Privacy and dignity within the family unit has also improved.