



Family Tents for IDPs in place of makeshifts in Mogadishu—UNHCR Somalia

CLUSTER SPECIFIC OBJECTIVES

- SO1: Contribute to the protection of newly displaced people and those affected by natural hazards. (NFIs, ESKs)
- SO2: Improve the living conditions of the protracted internally displaced persons (Transitional shelters, NFIs)
- SO3: Facilitate access to durable solutions for IDPs that are willing to locally integrate or return (Permanent shelters)

NEEDS ANALYSIS

• Somalia faces an enormous internal displacement crisis, fuelled by drought, conflict, forced evictions and floods. There are around 2.6 million people are internally displaced in Somalia currently residing in urban and peri-urban informal settlements. Most of the IDPs are living in crowded settlements, without sufficient access to basic services, with poor shelter conditions that raise protection and health concerns. The IDPs remain in need of improved Shelter and NFIs support, for protection from harsh climatic conditions, overall improvements to their living conditions and to improve their chances of accessing livelihoods and durable solutions.

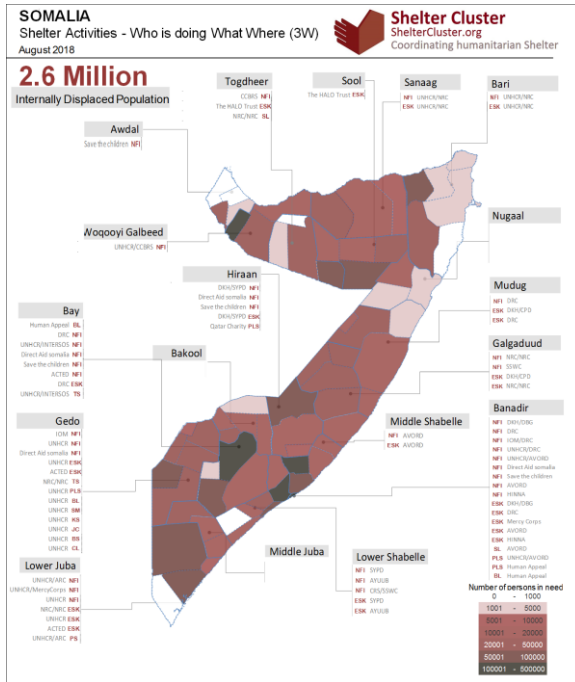
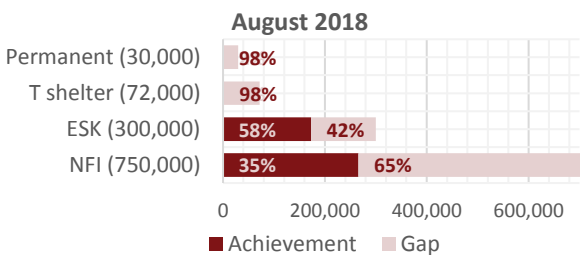
GAPS / CHALLENGES

Low funding for the sector continues to be the biggest concern, with most partners not having met 50% of the targets in 2017. Even with an end to the drought conditions little attention is given to the Shelter needs of IDPs. Although, the government has allocated land in several towns for IDP relocation, lack of site planning hampers progress in helping the IDPs achieve durable solutions. Logistical challenges including flight costs, road inaccessibility, insecurity, check points for the transportation of NFI/Shelter supplies are affecting the effective delivery of humanitarian assistance.

RESPONSE

In August 2018: 13,890 persons were assisted with emergency non-food items kit. The kit includes plastic sheeting, blankets, jerry cans, sleeping mats and kitchen sets. 9,871 persons have been assisted with Emergency Shelter Kits. An emergency shelter kit includes plastic sheets, supporting poles and a rope for tying down the structure. This provides the most basic shelter which can offer protection from extreme weather.

COVERAGE AGAINST TARGETS (Individuals)



SHELTER CLUSTER CONTACTS

Cluster Coordinator
Nurta Mohamed Adan
adan@unhcr.org / +252 615682233

Shelter Cluster Support Associate
Padmore Ochieng Okal
okal@unhcr.org / +254 723 793 105

KEY DOCUMENTS

- <https://www.sheltercluster.org/response/somalia>

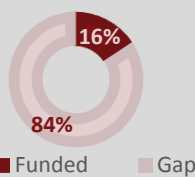
KEY LINKS

- <https://www.humanitarianresponse.info/en/operations/somalia/emergency-shelter-and-nfi>
- <http://reliefweb.int/country/som>

KEY FIGURES

24 Cluster partners **1.5M / 1.3M** People in need / targeted

FUNDING (source: OCHA Financial Tracking Service)



Total funding required:
70 M

The Life-Saving Family Tents

Mogadishu is home to over a half a million IDPs. This is the largest IDP population in all the towns of Somalia.

The explosion of IDP population in Mogadishu is as a result of the complex nature of the Somali humanitarian Crisis. Majority of the IDPs have been displaced from the neighbouring Lower shabelle region. The region has suffered escalation of armed conflict and violence between clans and state and non-state military outfits.

Some other IDPs were displaced by the 2016 – 2017 drought crisis from various regions in South Central Somalia.

The displaced households usually settle in spontaneous informal settlements with very limited tenure security. Most of these households have suffered multiple evictions and continue to live at risk of further eviction. The evictions are linked to widespread tenure insecurity, rise of land value in Mogadishu, disputes over land ownership and the reclaiming of state property, particularly in urban parts of Somalia. They usually occur without notice, and often involve violence and the destruction of housing and property.

Due to a weak protective environment and overcrowding, the informal settlements present opportunities for exploitation of inhabitants by the informal settlement managers, land owners and the surrounding host communities, who hold more power over them.

Due to these factors, finding a lasting solution to the displacement problem to this IDP population is difficult. The families live in small makeshift structures made of rags, recycled cloth and cardboards. These structures are insufficient in so far as providing the basic physical protection, privacy, dignity, or protection from extreme climatic conditions. Compounding the problems is the fact that most humanitarian actors do not have real access to most of these areas due to the insecurity posed by the presence of armed non-state actors.

At the height of the 2018 flooding crisis in Somalia, which came at the end of a prolonged drought, the situation of the Mogadishu worsened. Many were exposed to the extreme climatic condition which threatened their lives and health.

It was during this time that UNHCR received family tents as an in-kind donation from the Chinese government, through Kenyan government, to help alleviate the suffering of the IDP community. 2800 tents were received in Mogadishu in June 2018. The tent came in two sizes: The Big size tent measures (12M²), 3.7m Length x 3.2m Width x 2m Size Height x 2.7m Apex Height; The small sized tent measures(7.8M²), 3m

length x 2.6m Width x 1.5m Side Height x 2.25m Apex Height.

1800 tents (812 big size tents and 988 small size tents) have been distributed in Mogadishu where 99% of the IDPs were in need of assistance and especially for shelter, while 800 tents will be delivered to Baidoa and 500 will be prepositioned for any emergency.



IDP children of tent recipient households – UNHCR Mogadishu

The tents were distributed in Mogadishu by UNHCR's implementing partner, DRC, in close coordination with Banadir Regional Authority (BRA). 80% of the tents were given to IDPs while 20% were delivered to host community. The host community were targeted so as to improve the relations between them and the IDPs considering that

the relations are strained due to pressure on their limited resources created by the need to support displaced populations. Moreover, some of the hosts normally face similar circumstances as IDPs.

The distributions were conducted in Kahda, Daynille, Wadajir and Hodan districts which host more than 90% of the IDPs in Mogadishu. In the districts, settlements with land tenure of more than 3 years were targeted.

In close collaboration with the BRA, District commissioners and the informal settlement managers, the beneficiary households were selected using the following selection criteria: large households with more than 4 individuals and with poor shelter; persons living with serious medical condition and persons with disability; female headed households; newly displaced IDPs; and families that never received shelter support from agencies in the past.

Upon delivery of the tents, each household was provided assistance in erecting the tents.

Through the distribution of these tents, life-saving shelter assistance has been delivered to 1800 households. Although this was like a drop in the ocean considering the magnitude of need, the tents were received with overwhelming enthusiasm and gratitude.

The community has asked for more tent assistance, but caution should be observed to ensure that this assistance does not create a pull factor for more displacements, and that aid diversion is minimized.