

# **Shelter Cluster Tonga**

## **National Emergency Management Office**

Shelter Cluster Preparedness Meeting  
17 Dec 2019, Nuku'alofa



# Agenda

- 1 – Welcome and Introduction
- 2 - Cyclone season preparedness
- 3 – Agency Updates
- 4 – Shelter Cluster work plan update and next steps
- 5 – Any Other Business

**\*\* Reference section – Minimum standards for emergency shelter**

# 2. Cyclone season preparedness

**TONGA STOCK LEVELS by ITEM - by Administrative Division and Nationally**

| Items                | Tongatapu | Ha'apai | Vava'u | Eua | Ongo Niua | National totals |
|----------------------|-----------|---------|--------|-----|-----------|-----------------|
| Blanket              | 7222      | 1644    | 950    | 80  | 1300      | 11196           |
| Kitchen Set          | 2333      | 610     | 323    | 47  | 448       | 3761            |
| Other lamp/ Lanterns | 7         | 0       | 0      | 0   | 0         | 7               |
| Other lamp/ Lanterns | 1219      | 565     | 93     | 201 | 196       | 2274            |
| Shelter Tool Kits    | 1137      | 64      | 0      | 50  | 0         | 1251            |
| Solar Lights         | 4003      | 0       | 0      | 0   | 0         | 4003            |
| Tarpaulin            | 2479      | 653     | 690    | 90  | 300       | 4212            |
| Tents                | 342       | 19      | 20     | 18  | 10        | 409             |

**TONGA STOCK LEVELS by ITEM - by Agency by Administrative Division and Nationally**

|                        | Items                    | Nuku'alofa/<br>Tongatapu | Ha'apai | Vava'u | Eua | Ongo Niua | National Total by<br>item by Agency |
|------------------------|--------------------------|--------------------------|---------|--------|-----|-----------|-------------------------------------|
| <b>Tonga Red Cross</b> | Blanket                  | 6064                     | 1244    | 550    | 80  | 1300      | 9238                                |
|                        | Kitchen Set              | 1722                     | 410     | 123    | 47  | 448       | 2750                                |
|                        | Other lamp/ Lanterns     | 1219                     | 565     | 93     | 201 | 196       | 2274                                |
|                        | Shelter Tool Kits        | 1137                     | 64      | 0      | 50  | 0         | 1251                                |
|                        | Solar Lights             | 4003                     | 0       | 0      | 0   | 0         | 4003                                |
|                        | Tarpaulin                | 1020                     | 452     | 489    | 90  | 300       | 2351                                |
|                        | Tents                    | 242                      | 19      | 20     | 18  | 10        | 309                                 |
| <b>Caritas</b>         | Blanket                  | 1100                     | 400     | 400    |     |           | 1900                                |
|                        | Kitchen Set              | 611                      | 200     | 200    |     |           | 1011                                |
|                        | Other tools and hardware | 3                        | 0       | 0      |     |           | 3                                   |
|                        | Tarpaulin                | 1459                     | 201     | 201    |     |           | 1861                                |
| <b>NEMO Tonga</b>      | Tents                    | 100                      |         |        |     |           | 100                                 |
| <b>OXFAM Tonga</b>     | Blanket                  | 58                       |         |        |     |           | 58                                  |
|                        | Other Tools and Hardware | 4                        |         |        |     |           | 4                                   |

# 3. Agency Updates

- MORDI
- Caritas
- TNYC
- LDS
- Tonga Red Cross
- NEMO
- MOI
- Other...

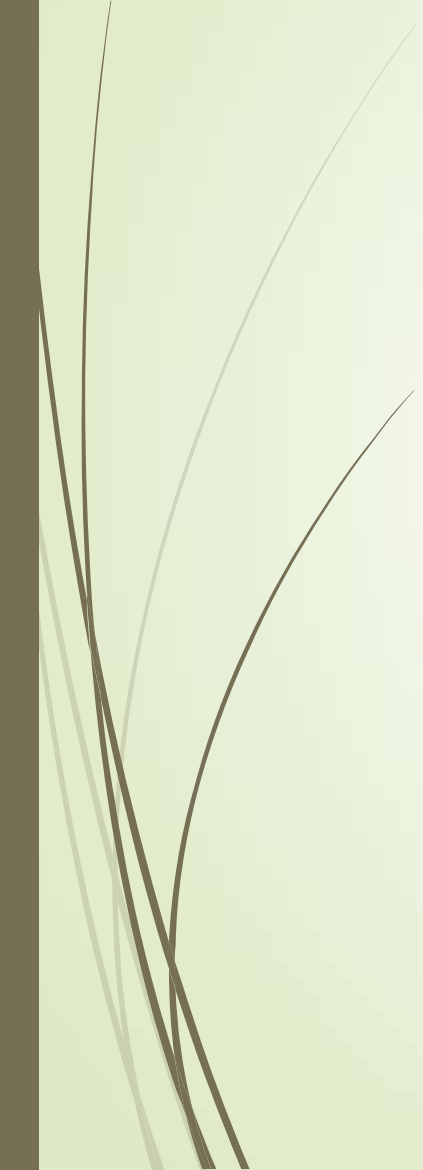
# 4. Shelter Cluster work plan

| Priority | Key Recommended Activities   | Theme              | Responsible   | Timeframe    | Status   |
|----------|--|--------------------|---|--------------|--|
| 1        | Review TOR for the Shelter Cluster. Refer existing draft TOR with NEMO.  | Coordination       | NEMO/MOI/IFRC to draft, partners to revise and endorse  | -            | Draft complete Dec 2018  |
| 2        | Finalise/Endorse Build Back Safer (BBS) Information Education Communication (IEC) materials. This was developed during TC Gita response currently with MORDI in 2 languages (English and local Tongan) | Technical Guidance | MORDI / NEMO / MOI                                      | Mid-Feb 2020 | 8 BBS Key Messages published on SC website, Nov 2018<br><a href="https://www.sheltercluster.org/tonga/documents/8-build-back-safer-mey-messages-tongan-0">https://www.sheltercluster.org/tonga/documents/8-build-back-safer-mey-messages-tongan-0</a><br><br>ITS MORDI materials to be translated by MORDI and endorsed by MOI |
| 3        | Shelter Coordination Training for Shelter Coordination Team. (NEMO, MOI, key shelter partners)   | Coordination       | IFRC to develop training in collaboration with NEMO/MOI | -            | Completed Dec 2018   |

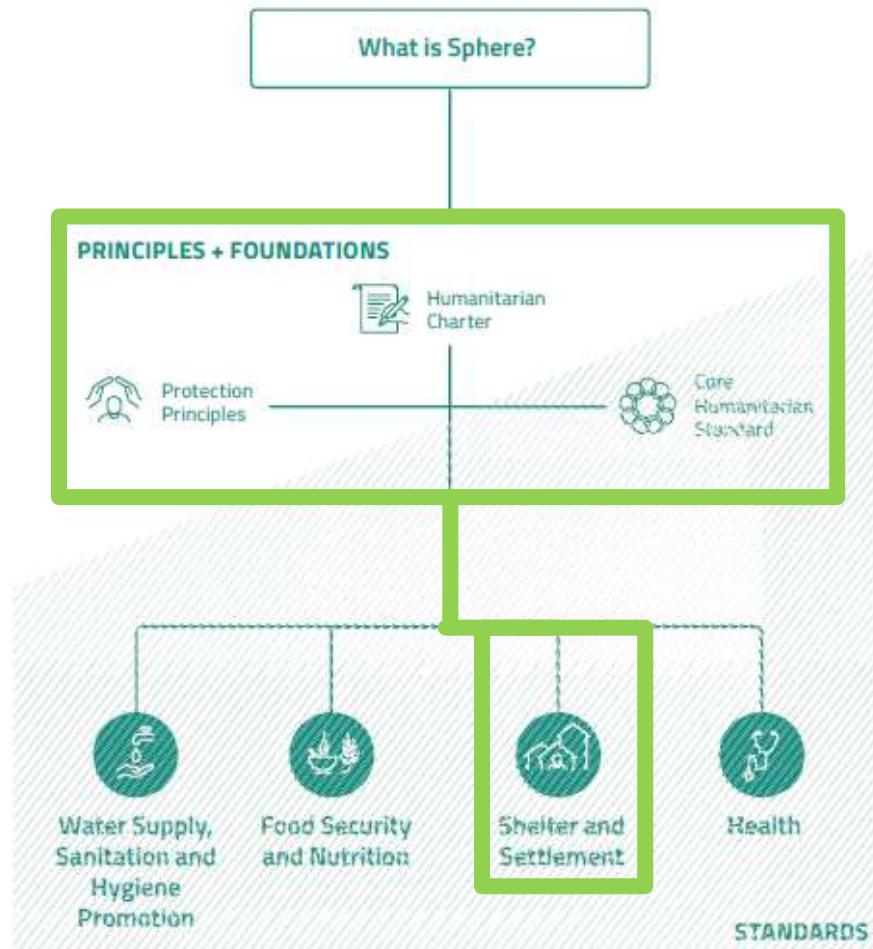
# 4. Shelter Cluster work plan

| Priority | Key Recommended Activities   | Theme                  | Responsible                                | Timeframe    | Status                           |
|----------|--|------------------------|--|--------------|----------------------------------|
| 4        | Standardise Shelter relief package and Non-Food items (NFIs).  | Technical Guidance     | NEMO/IFRC, partners                        | TBC          | Not started                      |
| 5        | Develop Shelter Cluster strategy template  | Coordination           | NEMO/MOI/IFRC (supported by TRCS/Caritas). | TBC          | Not started                      |
| 6        | Training in the use of Kobo of key shelter members and partners including town and district officers. 1 day training | Information Management | NEMO/MORDI                                 | End Jan 2020 | Planning                         |
| 7        | Develop multi-hazard contingency plan, e.g. Tropical Cyclone, Tsunami, etc. based on most-likely scenarios. WORKSHOP | Coordination           | NEMO/MOI/IFRC, partners                    | TBC          | Not started                      |
| 8.1      | Develop shelter inputs for a common assessment form. <i>Initial Damage Assessment (IDA)</i>                          | Information Management | NEMO/MOI/IFRC, statistics, partners        | -            | Completed Oct 2019               |
| 8.2      | <i>Detailed Shelter Assessment (DSA)</i>   |                        | MOI/NEMO/IFRC, statistics, partners        | TBC          | Not started                      |
| 9        | Develop guidelines on vulnerability prioritisation criteria  | Technical Guidance     | MIA + Caritas with support of partners     | TBC          | Not started                      |
| 10       | Country response profile   | Technical Guidance     | IFRC/NEMO/MOI, partners                    | 31/03/2020   | Draft complete, to be circulated |

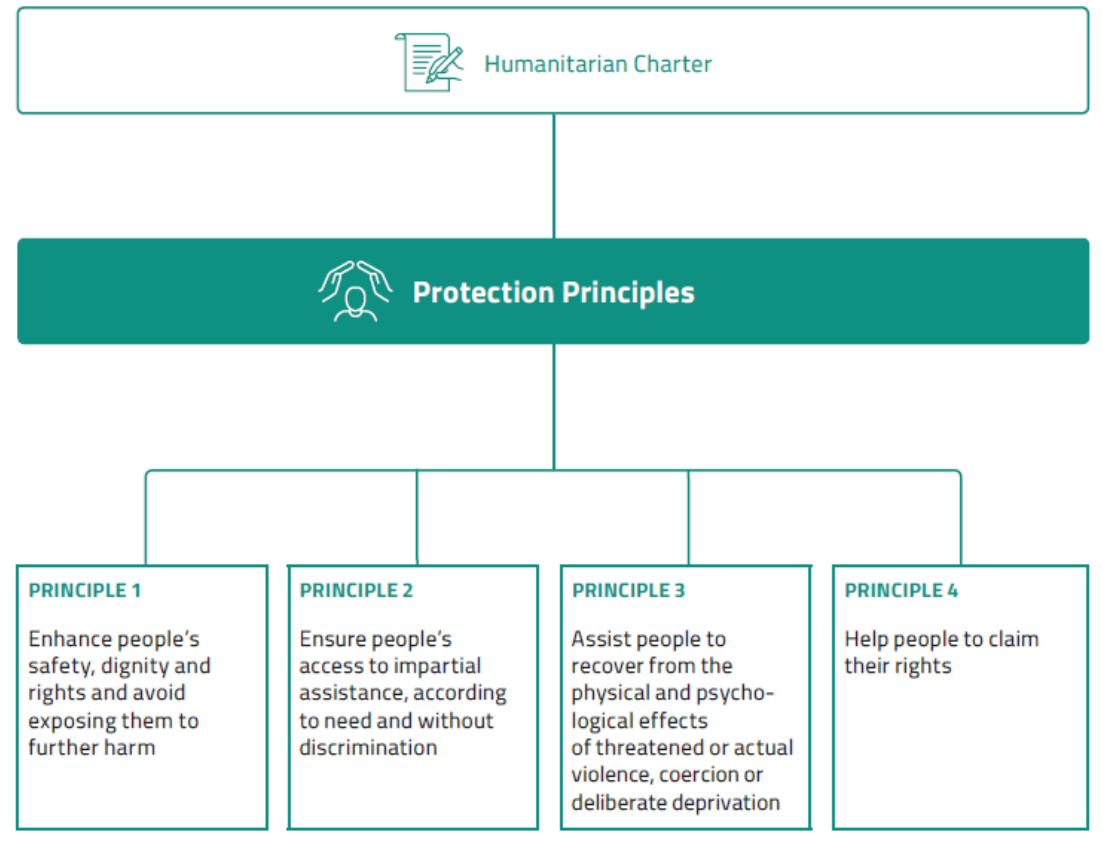
# 5. Any other business



# Minimum standards for emergency shelter



# Minimum standards for emergency shelter



# Protection considerations in Shelter

Humanitarian protection is about improving safety, well-being and dignity for crisis-affected populations. Protection refers not only to what we do, but also the way we do it. These principles include:

*Do not cause further harm or create new risk of harm*



*Non-discriminatory access to assistance and services*



*Identify the most vulnerable and their specific needs*



*Safe and dignified access to basic services*



*Community participation and empowerment*

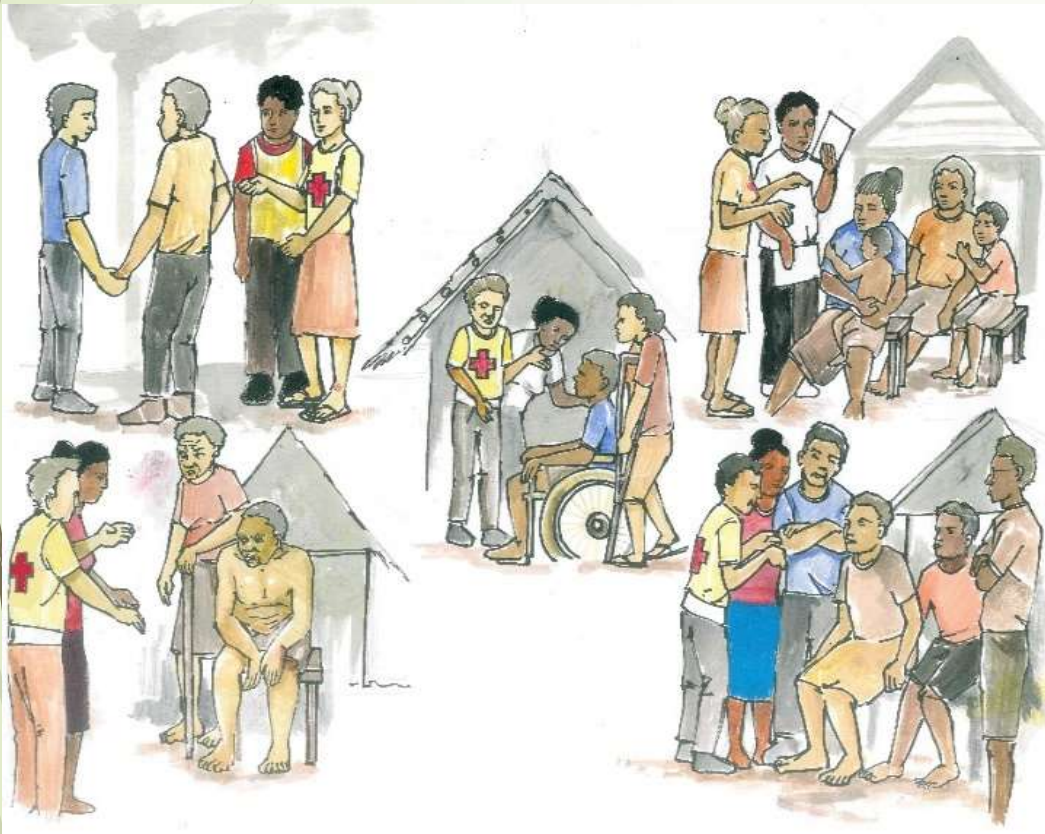


*Strengthen positive community protection capacities*

- A few documents on protection are on the on the [Shelter Cluster Tonga](#) website.



# Minimum standards for emergency shelter



## STANDARD 1: PLANNING

- Assess shelter and settlement needs and capacities and plan the response with affected communities and authorities.
- Consider specific needs of at-risk groups including people who are unwell, lactating mothers, pregnant women, people living with disabilities, elderly, children, etc.

# Minimum standards for emergency shelter

## STANDARD 2: LOCATION AND SETTLEMENT PLANNING

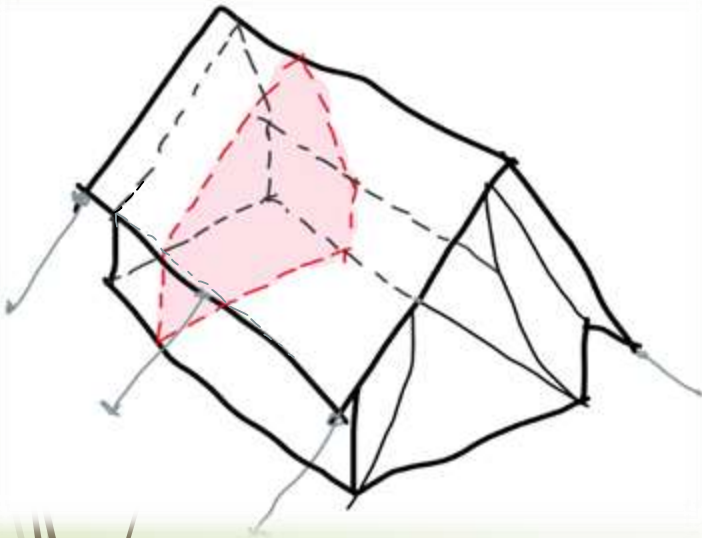
Choose a safe site away from hazards. Avoid areas too close to the seaside, on steep hills, and low-lying areas which are easily flooded.

**A good shelter needs access to services** including toilet, handwashing facilities, bathing facilities, menstrual hygiene and management facilities, lighting (safety and security), food storage and processing, healthcare facilities, solid waste disposal, schools, places of worship, recreational areas, safe spaces for children, space for rituals, growing food, livestock accommodation and grazing.

# Minimum standards for emergency shelter

## STANDARD 3: LIVING SPACE

- The shelter must have enough living space for daily life. During an emergency, a minimum of 3.5m<sup>2</sup> covered space is needed per person. Some people may require more space, e.g. persons with disabilities.
- Ensure access around and to the shelter is possible for all members of the family. People with limited mobility may require ramps, rails, and wider doorways in and around the shelter.
- To increase privacy, divide the inside of the shelter into several rooms for changing etc.



# Minimum standards for emergency shelter

## STANDARD 4: HOUSEHOLD ITEMS

Supports restoring and maintaining health, dignity and safety and the undertaking of daily domestic activities in and around the home.

**Sleeping** = min. 1 blanket and bedding/ person and mosquito net where required

**food preparation and storage** = 1 kitchen set/4-5 people

**eating and drinking** = 1 dished plate, 1 set of eating utensils and 1 drinking vessel/person

**thermal comfort, lighting, and personal clothing** = min. 2 sets of clothing/person



Coordinate with WASH & Health Clusters for hygiene kits, buckets, jerrycans, and mosquito nets.

# Minimum standards for emergency shelter

## STANDARD 5: TECHNICAL ASSISTANCE

Provide technical assistance to the affected population as a part of the shelter response.

To keep the shelter cool inside use the tarp to make a ceiling (min. 2.6m high), put windows on each side towards the breeze and use natural materials for walls to increase cross-ventilation, put shutters on windows to keep direct sunlight out, make a good roof overhang to shade walls from the sun, put local materials like banana or coconut leaf on top of the roof, make a veranda or other shady place around the shelter for during the day if the inside of the shelter becomes too hot.



To keep people healthy, avoid leaving objects around the shelter which can collect stagnant water, attracting mosquitoes.

To avoid flooding choose a good site, make a steep roof pitch (not flat) with good overhang so the water can drain off and away from the shelter, dig drainage channels and slope the ground away from the shelter to direct water away from the shelter, and raise the floor inside the shelter.

# Minimum standards for emergency shelter

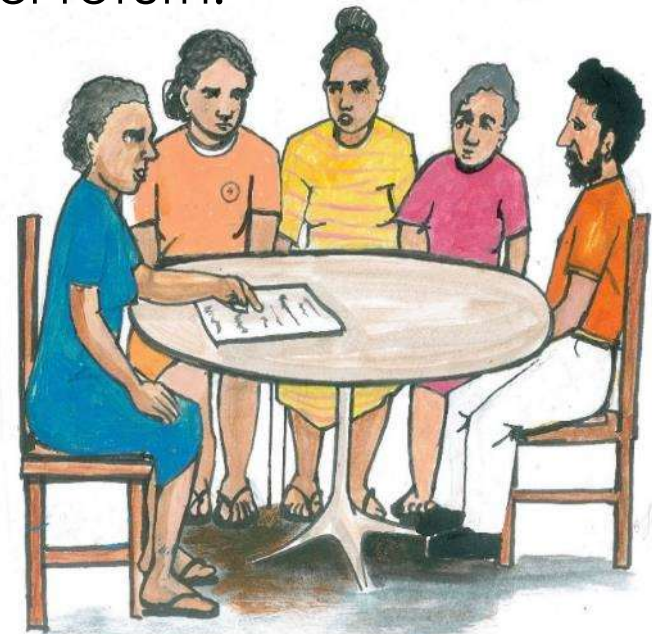
## STANDARD 6: SECURITY OF TENURE

Security of tenure means that people can live in their homes without fear of forced eviction, whether in communal settlement situations, informal settlements, host communities, or after return.

Work in coordination with local authorities, legal professionals and inter-cluster to achieve as much legal certainty about tenure as possible. Understand the legal frameworks and reality on the ground and identify how these affect the most at-risk groups.

This could be done by holding focus group discussions including with persons of all gender identities, ages, disabilities and backgrounds.

Implement shelter and settlement programs to support security of tenure and support protection from forced eviction (referrals and dispute resolution).



# Minimum standards for emergency shelter



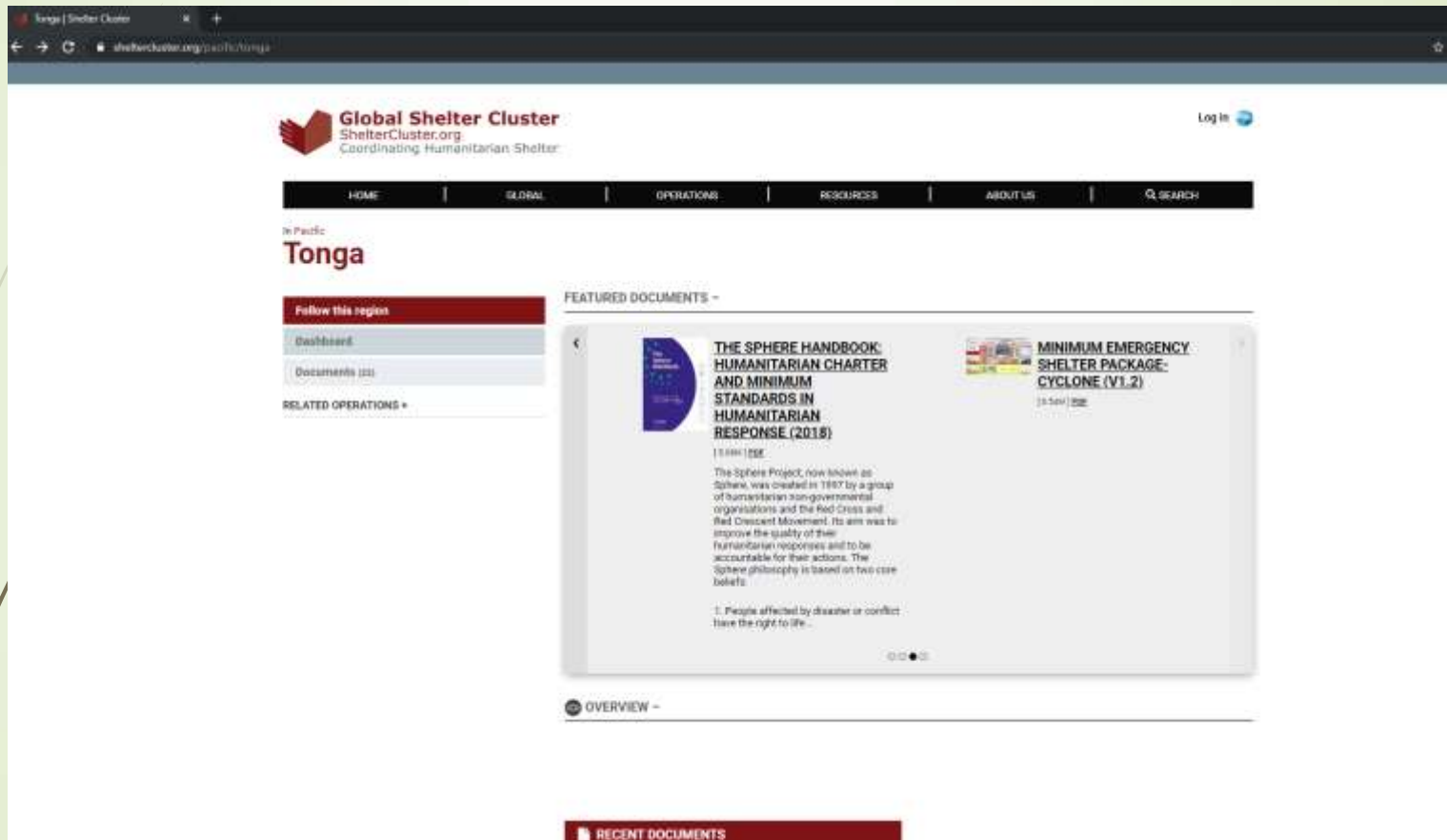
## STANDARD 7: ENVIRONMENTAL SUSTAINABILITY

Assess and minimise the impact of shelter projects on the environment. Encourage selection of sustainable, recycled, reused or salvaged materials where possible. Encourage tree planting projects to replenish natural resources in communities. Ensure no rubbish is left in communities by shelter teams. Promote safe, reliable, affordable and environmentally sustainable energy systems such as solar power.

# Minimum standards for emergency shelter



# “Follow” the Shelter Cluster Tonga to receive automatic updates



The screenshot displays the Shelter Cluster website for Tonga. The page features a navigation menu with options: HOME, GLOBAL, OPERATIONS, RESOURCES, ABOUT US, and SEARCH. The main content area is titled 'In Pacific Tonga' and includes a 'Follow this region' section with a 'Dashboard' and 'Documents (2)' link. Below this is a 'RELATED OPERATIONS +' section. The 'FEATURED DOCUMENTS' section highlights two documents: 'THE SPHERE HANDBOOK: HUMANITARIAN CHARTER AND MINIMUM STANDARDS IN HUMANITARIAN RESPONSE (2018)' and 'MINIMUM EMERGENCY SHELTER PACKAGE: CYCLONE (V1.2)'. The first document's description states: 'The Sphere Project, now known as Sphere, was created in 1987 by a group of humanitarian non-governmental organisations and the Red Cross and Red Crescent Movement. Its aim was to improve the quality of their humanitarian responses and to be accountable for their actions. The Sphere philosophy is based on two core beliefs: 1. People affected by disaster or conflict have the right to life...'. Below the featured documents is an 'OVERVIEW' section and a 'RECENT DOCUMENTS' section.



# Useful Links

Shelter Cluster Tonga website

<https://www.sheltercluster.org/pacific/tonga>

PALM platform (Logistics Cluster)

<https://palm.logcluster.org/>