

# 2019 SNAPSHOT HUMANITARIAN RESPONSE PLAN

## OVERVIEW

The conflict in Yemen entered its fifth year in March 2019 and remains the world's worst humanitarian crisis.

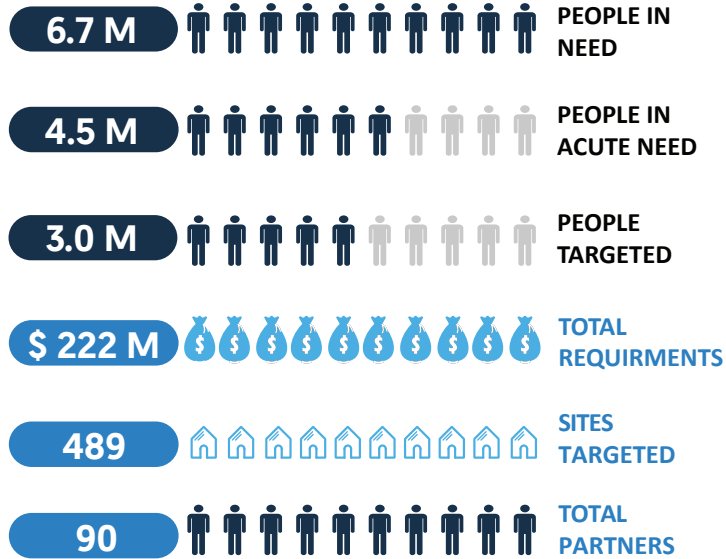
Consequently **Shelter** remains a major humanitarian priority with 2/10 people in need of Shelter/NFI or SMC (Site Management and Coordination) support, with most living in makeshift shelters using inadequate materials to construct their shelters such as plastic sheeting, cardboard, cloths and leaves in areas without adequate access to basic services.

In **IDP Hosting Sites** some 465,000 IDPs live in close to 1,300 Sites, often as a last resort, and are considered among the most vulnerable populations with no means to support more adequate shelter solutions.

**Returnees** are no better off with at least 10 % with no shelter or settled in makeshift shelters while 6% reside in IDP hosting sites due to multiple factors including damage to their homes, security and safety and limited access to basic services and livelihood opportunities.

There has been an 84% increase in needs from 1.2 M people in 2015 and 24% increase from 5.4 M in 2018 to 6.7 M in 2019. For people with acute needs an increase of 67 % since 2015 or 4.5 M in 2019 an increase of 42% from 2018. The Shelter/NFI/CCCM Cluster target remained at 3 M for 2018 and 2019 with a budget increase from \$195 M in 2018 to \$222 M up 14% in 2019.

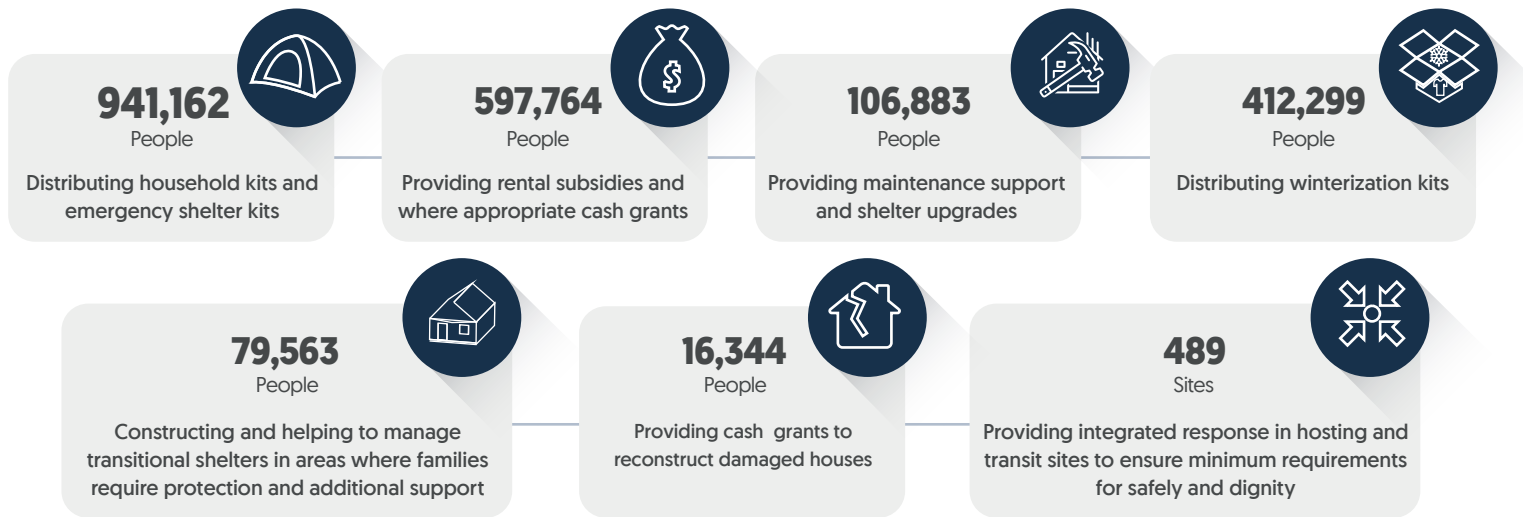
## KEY FIGURES



## STRATEGIC OBJECTIVES

- 1 Provide safe, appropriate shelter and essential household items to displaced and highly vulnerable families
- 2 Coordinate the delivery of a Minimum Service Package (MSP) in under-served emergency and IDP settlements

## ACTIVITIES and TARGET



## 2019 PRIORITIES

- Decisions are taken as close to the beneficiaries as possible through empowered Sub National Clusters
- Engagement with Donors and private sector improved and initiatives for NNGOs to access more funding developed
- Gap assessment and prioritization of locations and activities enhanced through regular needs Indicator monitoring
- Site Management and Coordination capacity in IDP Hosting Sites strengthened and scaled up
- Emergency response, reach and capacity enhanced through Emergency stocks prepositioning
- Appropriate Shelter solutions and more sustainable interventions promoted
- Analysis and understanding of impact of Cluster activities improved
- Flexible and diverse capacity building initiatives adopted
- Engagement with Strategic Partners and local Authorities enhanced