



Malawi Shelter Cluster Technical Working Group for Promoting Safer Building Practices in Malawi

a collaboration with the Global Shelter Cluster Working Group on “Promoting Safer Building Practices” and partners of the GCRF research project





Agenda:

1. recap & conclusions last meeting
2. criteria for identifying contextually appropriate construction technologies





1. Introduction and recap of last meetings discussions and conclusions

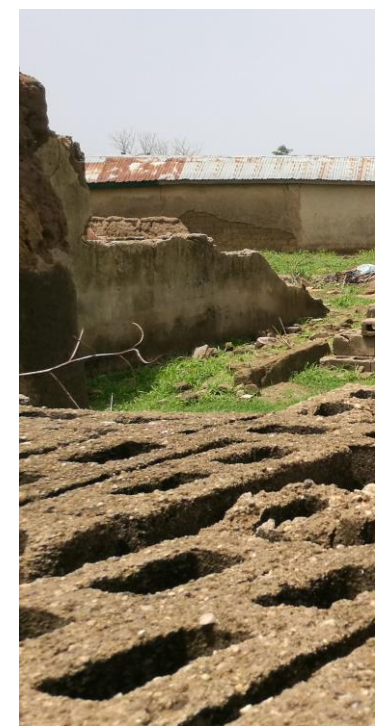
→ **shared ambition to promote stronger, more durable housing especially in highly vulnerable communities that are facing the realities of poverty, lack of resources and limited capacities.**

- Focus not only on technical solutions but on **awareness raising** and **better understanding of weaknesses and risks**
- what are **“green technologies”** in different contexts? How to decide, identify the appropriate





What is considered „green“ materials and technology can be vary depending on the region.





2. What could be criteria to decide whether a materials, techniques, solutions is suitable?

- environmental aspects?...
- Affordability?...
- Availability?...