

# Shelter Cluster meeting 22<sup>th</sup> March 2022

## Typhoon Rai (Odette)



# Agenda

1. **4Ws**
2. **Update on Key informant questionnaire.**
3. **Update on roll out strategy for advocacy note**
4. **PCA presentation “Utilization of Typhoon-Felled/Damaged Coconut Trees for Housing Materials and Charcoal Production for Slabs Off-cuts”**
5. **Local coordination updates:**
  - **Southern Leyte**
  - **Caraga**
  - **Cebu**
6. **AOB**

# 1. 4Ws reporting

Schedule is every 3 weeks now and submission will be on Tuesdays instead of Wednesdays. We will send you reminder on Mondays.

Next special deadline due to Easter holidays:

**Friday 8 April 8 PM**

For questions reach out to [coord1.phil@sheltercluster.org](mailto:coord1.phil@sheltercluster.org)

Only report to SC, we will compile and report to OCHA (including Caraga)

## 2. Update on Key Informant Assessment

Ongoing by REACH colleagues / first results expected to be sent end of this week.

Will be presented on 5 April meeting.



### 3. Update on roll out strategy for advocacy note

Roll out strategy will be presented in an ad hoc HCT meeting tomorrow 23th March

## 4. Update / Philippine coconut authority

On going collaboration :

- With Habitat for Humanity: Inputs on the PULIDO radio program on 9 April.
- With Shelter Cluster FaQ on coco lumber
- Production of FAQ on coco lumber “Utilization of Typhoon-Felled/Damaged Coconut Trees for Housing Materials and Charcoal Production for Slabs Off-cuts”



## 4. Update / Philippine coconut authority

**Production of FAQ on coco lumber “Utilization of Typhoon-Felled/Damaged Coconut Trees for Housing Materials and Charcoal Production for Slabs Off-cuts”**

+

**Partners questions**

## 5. Updates from hubs: **Southern Leyte**

**[arnold.gasta@crs.org](mailto:arnold.gasta@crs.org) / [baimaroudz.ibrahim@crs.org](mailto:baimaroudz.ibrahim@crs.org)**

### UPDATE

- No news about non-emergency shelter intervention for Southern Leyte.
- 30,000 identified totally damaged houses
- 1,068 core shelter intervention (70% for NBZ, 30% for mainland) - provincial government with LGU counterpart (land for the relocation site)
- Government has move forward on their semi-permanent (Core shelter) in terms of design, clearing of identified relocation site at the Municipal level
- 72 open ECs, with 437 families
- SRK recipients leave the ECs
- Revised design of core shelter house will be presented on the next TWG meeting with updated BOQ



## 5. Updates from hubs: **Southern Leyte** **arnold.gasta@crs.org / baimaroudz.ibrahim@crs.**

### CHALLENGES

- High caseload for totally damaged households
- Households in ECs under NBZ areas
- Impact of the election ban from March 25 to June in the implementation of the core shelter project.
- Unresolved protection issues in ECs



## 5. Updates from hubs: **Southern Leyte** **arnold.gasta@crs.org / baimaroudz.ibrahim@crs.**

### NEXT STEPS:

- Advocacy paper for National Shelter Cluster for resource mobilization
- Transitional Shelter pilot for discussion with the provincial government.
- TWG meeting on March 28: Presentation of revised core shelter design with updated BOQ and harmonizing beneficiary selection criteria.
- Next Southern Leyte Shelter Cluster Coordination Meeting – April 4



## 5. Updates from hubs: **Caraga** **kgotian@iom.int**

- Post-Disaster Shelter Planning Workshop for Surigao del Norte on going : next activities

ACTIVITY	SCHEDULE
CDRA TRAINING	April 4-8, 2022
LOCAL SHELTER PLAN AND RESETTLEMENT ACTION PLAN WRITESHOP	April 18-22, 2022
PRESENTATION OF OUTPUTS	April 25-29, 2022



## 5. Updates from hubs: **Caraga** **kgotian@iom.int**

- MOA signing on 25 March 2022 with DENR and SDN LGUs on PACBRMA

## 5. Updates from hubs: **Caraga** **kgotian@iom.int**

### **Caraga LGU Request for Assistance**

- **General Luna, SDN**
- Logistical Support for the development of their Comprehensive Land Use Plan

- **San Isidro, SDN**

Relocation Site Development and Shelter Materials

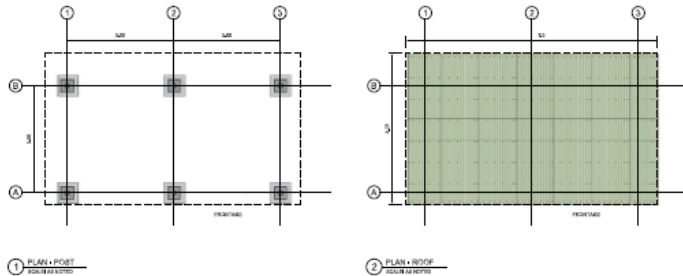
## 5. Updates from hubs: **Cebú** **RAFI + Habitat for humanity**

United Architect of the Philippines presented 1 model on the Government Regional Shelter Cluster meetings for temporary shelter (30k materials) and 1 model to permanent (395K materials and labors) which t has been reviewed by NHA.

Shelter Cluster aiming to link with regional government for technical collaboration on BBS messages

# 5. Updates from hubs: **Cebú**

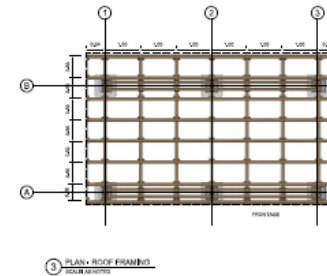
## UAP temporary shelter proposal



1 PLAN + POST  
SCALE: 1:100

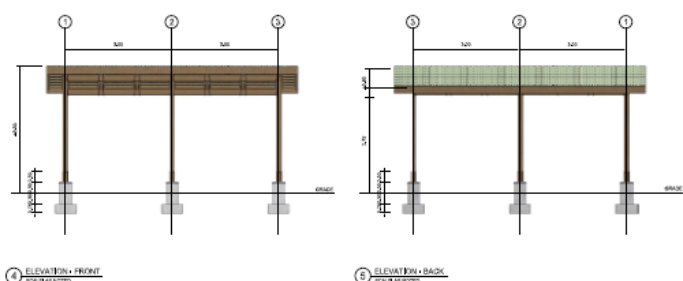
2 PLAN + ROOF  
SCALE: 1:100

**EMERGENCY ARCHITECTS** 11 SQ.M. RESILIENT SHELTER CONCEPT  
CARAGA Region Shelter Cluster TWG Proposal - February 15, 2022



3 PLAN + ROOF FRAMING  
SCALE: 1:100

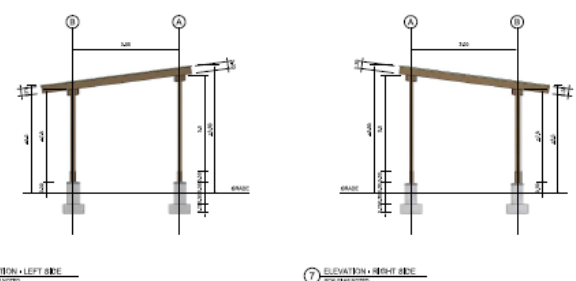
**EMERGENCY ARCHITECTS** 11 SQ.M. RESILIENT SHELTER CONCEPT  
CARAGA Region Shelter Cluster TWG Proposal - February 15, 2022



4 ELEVATION + FRONT  
SCALE: 1:100

5 ELEVATION + BACK  
SCALE: 1:100

**EMERGENCY ARCHITECTS** 11 SQ.M. RESILIENT SHELTER CONCEPT  
CARAGA Region Shelter Cluster TWG Proposal - February 15, 2022



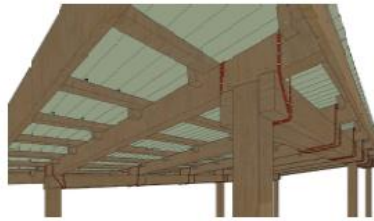
6 ELEVATION + LEFT SIDE  
SCALE: 1:100

7 ELEVATION + RIGHT SIDE  
SCALE: 1:100

**EMERGENCY ARCHITECTS** 11 SQ.M. RESILIENT SHELTER CONCEPT  
CARAGA Region Shelter Cluster TWG Proposal - February 15, 2022

# 5. Updates from hubs: **Cebú**

## UAP temporary shelter proposal



8 DETAIL - RAFTER REBAR ANCHORAGE  
SCALE: 1/4"



9 DETAIL - ISOLATED FOOTING WITH REBAR ANCHORAGE  
SCALE: 1/4"

**EMERGENCY ARCHITECTS** 18 SQ.M. RESILIENT SHELTER CONCEPT  
CARAGA Region Shelter Cluster TWG Proposal - February 15, 2022



10 PHASE 1 - 18 SQ.M. CONE RESILIENT SHELTER  
SCALE: 1/8"

**EMERGENCY ARCHITECTS** 18 SQ.M. RESILIENT SHELTER CONCEPT  
CARAGA Region Shelter Cluster TWG Proposal - February 15, 2022



11 PHASE 2 - WOOD FRAMING OPTION  
SCALE: 1/8"



12 PHASE 2 - FIBER CEMENT WALL PANELING OPTION  
SCALE: 1/8"

**EMERGENCY ARCHITECTS** 18 SQ.M. RESILIENT SHELTER CONCEPT  
CARAGA Region Shelter Cluster TWG Proposal - February 15, 2022



13 PHASE 3 - FUTURE MODULAR HOME EXPANSION  
SCALE: 1/8"

**EMERGENCY ARCHITECTS** 18 SQ.M. RESILIENT SHELTER CONCEPT  
CARAGA Region Shelter Cluster TWG Proposal - February 15, 2022



# 5. Updates from hubs: **Cebú**

## UAP permanent shelter proposal

**SITE DEVELOPMENT PLAN**  
Scale 1:50mts.

**THE SHELTER DESIGN**

*The design of the permanent shelter primarily took into consideration disaster resiliency as well as the ability of the residents to build incrementally. This is an application to a survey conducted by one of the authors to the transitional shelters built in Bantayan Island, Cebu for the victims of Typhoon Haiyan.*

*The proposed design ensured that the residents can fully utilize the main living space by separating into separate modules the living space and the utility spaces e.g., kitchen, toilet & bath, & laundry area. The reduction in the width has also allowed for the efficient use of the commercial length of the coconut lumbers.*

*Finally, the resiliency of the construction method of the shelter is intended to observe the build back better standards developed by the ShelterCluster.org & the DSWD as well as other related research materials. This is further supplemented by the inclusion of the decorative blocks to so that differences in the air pressure between the interior and exterior spaces are prevented especially during times of typhoons.*

**Project Title**  
A Proposed Disaster Resilient Permanent Shelter

**Location of Project**  
Cebu Province

**Project Code**  
20220225 - RES - 0225

**Notes**  
This document are intellectual property of the architect, whether the object for which they are made is executed or not. It shall be unlawful for to duplicate or make copies of this document for use in repetition of and for other projects, whether executed partly or in whole, without the written consent of the architect as author of this document.

**Sheet Number**  
ASD - 01

02/25/2022

**Drafted by**  
BKC90 - 2022 February 25

## 5. Updates from hubs: **Bohol**



The banner features a blue background with a collage of images: a person in a blue cap, the official seal of the Province of Bohol, a colorful wave logo, two men in blue shirts, a damaged structure, and a map. The text is centered and reads:

**BOHOL RESILIENCY SUMMIT**  
*Theme: Disaster Resiliency for Sustainable Economic Growth*

The Bellevue Resort, Doljo, Panglao, Bohol  
March 15, 2022

In collaboration with

Logos at the bottom include: THE WORLD BANK (IBRD • IDA | WORLD BANK GROUP), NDRRMC (National Disaster Risk Reduction and Management Council), pdrf (Philippine Disaster Resilience Foundation), and the Bohol Provincial Government seal.

# 5. Updates from hubs: **Bohol**



# 6. Transitional and recovery projects. / IOM

## TRANSITIONAL SHELTER IN BRGY. CAGNIOG, SURIGAO CITY



## 6. Transitional and recovery projects. / IOM

### TRANSITIONAL SHELTER IN BRGY. CAGNIOG, SURIGAO CITY



## 6. Transitional and recovery projects. / IOM

### TRANSITIONAL SHELTER IN BRGY. CAGNIOG, SURIGAO CITY



# 6. Transitional and recovery projects. / IOM

## CORE SHELTER IN CARAGA



# AOB?



# Thank you!

