

**Background:** Due to heavy rainfall over the past week in the Northeastern Indian states there is an increase of water level observed in the North Eastern part of Bangladesh which led a serious flood in that region. Mainly several places of the 5 districts in that region are inundated by excessive rainfall but Sylhet and Sunamganj district affected the most severally. Alongside with Government of Bangladesh several national and international agencies have already started providing support to the affected communities. According to latest update by Flood Forecasting and Warning Centre (FFWC), water is flowing above danger level (upto 1m) in several station of Surma and Kushiya river at Sylhet and Sunamganj. Point to be noted, in Amalshid point of Kushiya river at Zakiganj upazila of Sylhet district water is flowing more than 1m above danger level (red signal). The forecast of FFWC shows that, flood situation may improve in the several areas of Sylhet where as situation may be worsen in the low lying area of Netrokona district. Many people in these areas are living in a very miserable life as they need emergency food and water support immediately.

**Exposed Population:** This Map has been produced from the observed flood monitoring report by the Global Flood Monitoring (GFM), EU and accessed from GLOFAS. They provided potential exposed population from the inundation area captured through satellite image on May 17, UTC. As per EU's Copernicus Emergency Management Service (CEMS), inundation exposed Population is around 418,546. The total affected land cover\* is as follows-

Affected Landcover

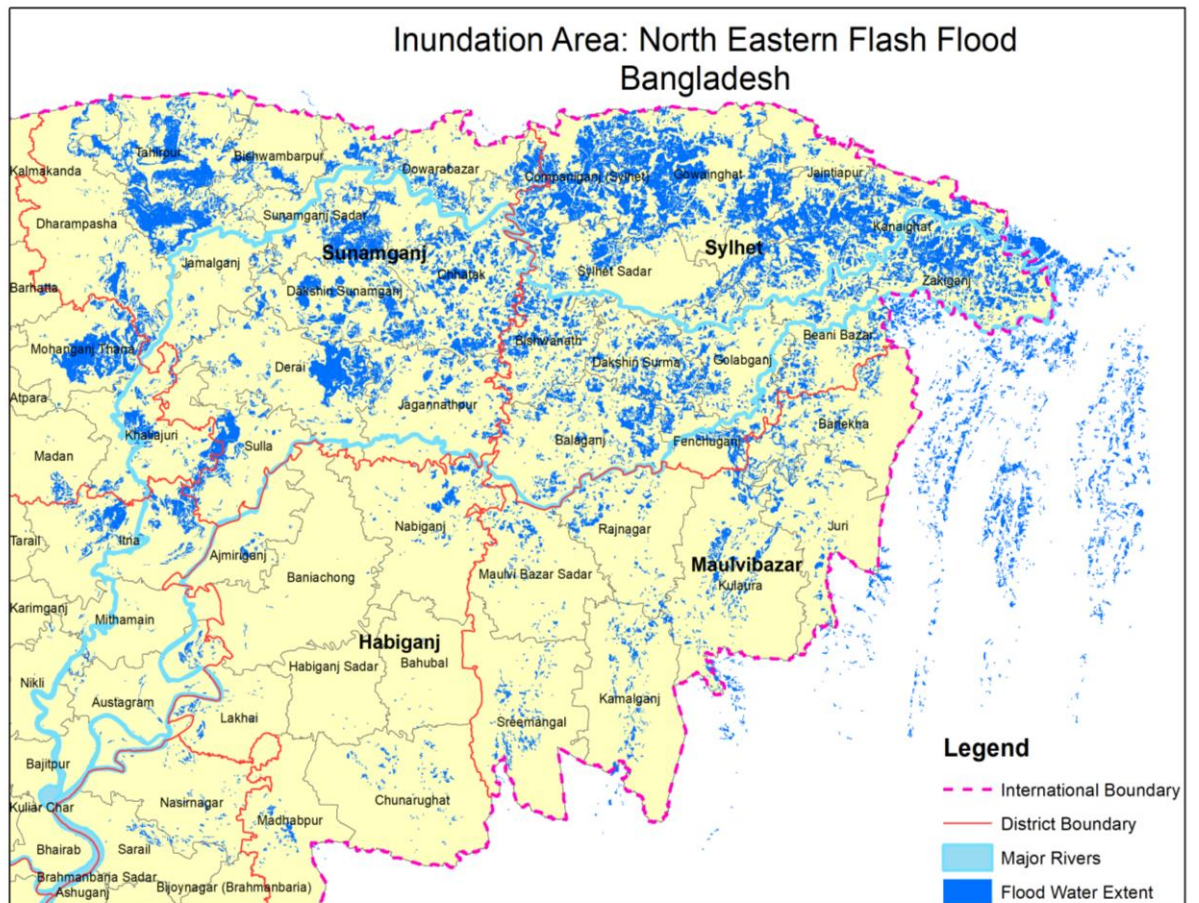
Landcover Type	Area [m <sup>2</sup> ]
Shrubs	537 600
Open forest	11 998 800
Closed forest	1 143 200
Urban / built up	2 328 800
Herbaceous wetland	23 861 600
Herbaceous vegetation	13 786 400
Bare / sparse vegetation	1 033 200
Agriculture / Cropland	2 179 893 200

\* All the numbers showed in the above table are calculated by satellite image.

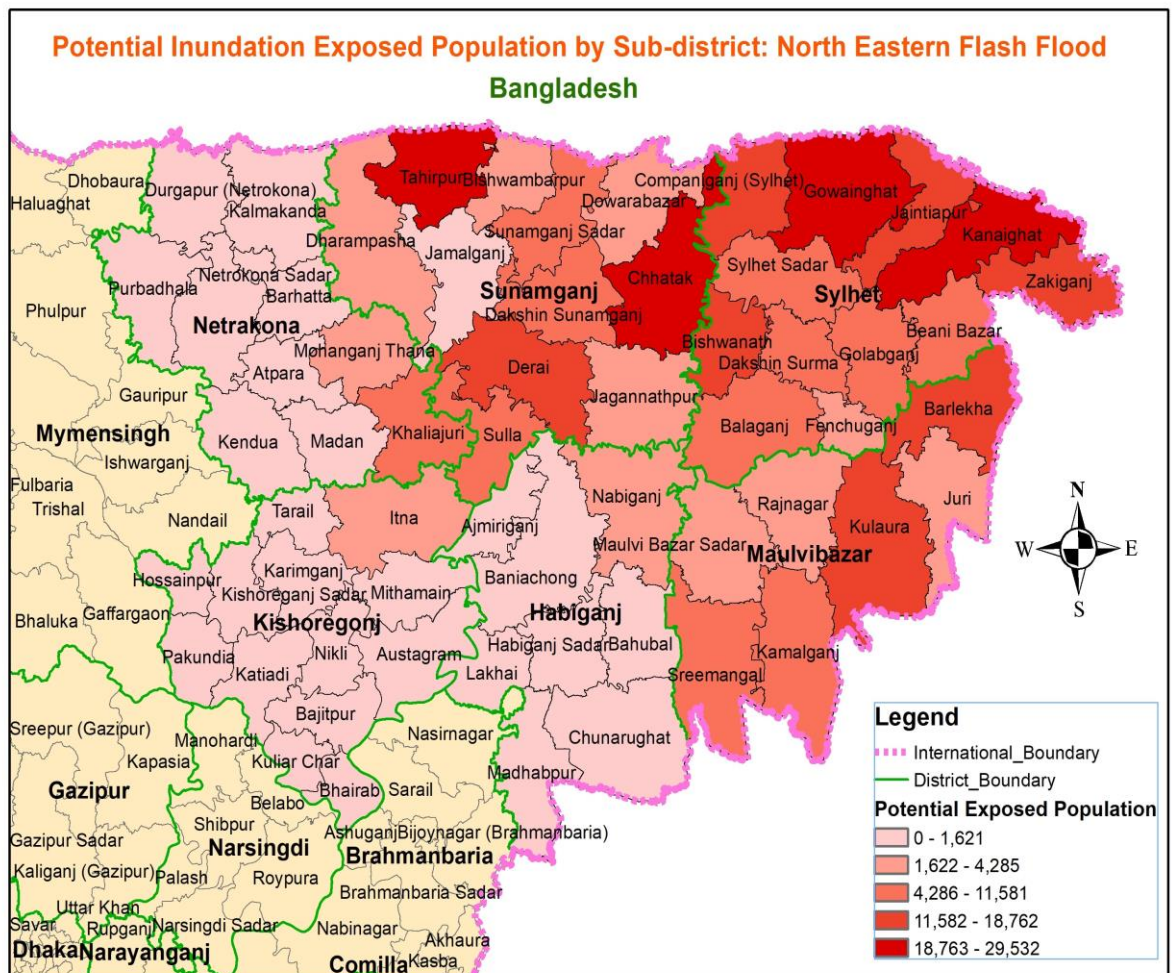
According to this Map, most exposed people are from several sub-district of Sylhet and Sunamganj district.

### Snapshot of impact (Based on different secondary sources):

- ❖ Total 133 villages of six union at Companiganj Upazila of Sylhet district have been affected by ongoing flood and total affected population estimated to be approximately 46,500 individuals (source: situation update by UNO office, Companiganj Sylhet).
- ❖ About 72,300 people of 10 Union have been effected by this flash flood in Kanaighat Upazila of Sylhet district where as total 329 Houses damaged (268 partial and 61 fully damaged). About 1137 hector of agricultural land inundated and 205 sq km area went under water (source: SoS form, Kanaighat, Sylhet).



Source: The Global Flood Monitoring (GFM), EU Copernicus Emergency Management Service (CEMS) Satellite Imagery: Synthetic Aperture Radar (SAR), Sentinel-1 Imagery date: 00 UTC, 17 May 2022



Source: The Global Flood Monitoring (GFM), EU, Copernicus Emergency Management Service (CEMS) Satellite Imagery: Synthetic Radar (SAR), Sentinel-1 Imagery date: 00 UTC, 17 May 2022

- ❖ About 69,165 people of 10 Union have been effected by this flash flood in Goainghat Upazila of Sylhet district where as total 396 Houses damaged (345 partial and 51 fully damaged) and till date one people died as well one is missing. (source: SoS form, Goainghat, Sylhet).
- ❖ Many areas in the Sylhet City including the Shahjalal Upashahar, Misimpur, Sobhanighat, Teroratan, Kalighat, Chhararpar, Sheikhghat, Kazirbazar, Taltola, Kushighat, Mendibag etc. went under water. Vast areas in Kanaighat, Zakiganj, Golapganj, Gowainghat and Fenchuganj upazilas have been flooded due to 20 breaches developed on various points of the Surma dyke. Road link of Sylhet with Kanaighat and Gowainghat had been snapped. Vast tracts of lands and homesteads in Sylhet Sadar, Jaintiapur, Kanaighat, Companiganj, Zakiganj, Golapganj, Gowainghat and Fenchuganj upazilas remained inundated. (source: situation report by Islamic Relief Bangladesh)
- ❖ Floodwaters deluged parts of Sylhet after the breaching of 34 dams on the Surma and Kushiya rivers, said Niloy Pasa, an assistant engineer at the Bangladesh Water Development Board. (source: [bdnews24.com](http://bdnews24.com))
- ❖ Around 2 million people have been impacted due to the flood. They are reeling from a food and drinking water crisis. Around 1.5 lakh families in Sylhet and Sunamganj have been without power since 17 May 2022 due to submergence of Power Stations. More than 873 educational institutions, mostly government primary schools, have been closed due to severe flooding in the two districts, causing loss of learning to the students. (source: situation report by Islamic Relief Bangladesh)
- ❖ Department of Agricultural Extension's district office confirmed that the flood had already destroyed Aus seedbed in 1,421 hectares, Boro in 1,704 hectares and summer vegetables in 13,340 hectares. (source: situation report by Islamic Relief Bangladesh)
- ❖ According to Deputy Director of Sunamganj Agricultural Department, 500 hectares of Boro land have gone under water in Sunamganj Sadar, Tahirpur, Chhatak and Doarabazar upazilas estimating a damage worth BDT 50 million. Three children aged under 12 years have been died due to lightening while helping their parents in field to save their crops. Also, 96 people have been affected due to waterborne disease reportedly from the Sylhet Civil Surgeon's Office. (source: situation report by Islamic Relief Bangladesh).

❖ As per the Department of Public Health Engineering (DPHE), 370 tubewell and 3,659 toilets were affected (as of 19 May 2022)

**Government Response:** In Sunamganj District Administration till date allocated 140 Metric Ton rice, BDT 1200,000 G.R. Cash and 2000 Dry food packages as well 56 flood shelter also have been prepared. In Sylhet 326 Flood shelter have been prepared where 7439 people are staying in 95 shelter as of May 19, 2022. Besides, 199 flood shelters have been equipped with WAH facilities and DPHE of Sylhet raised 35 tubewell and disinfected another 31 damaged tubewells.

Sl.	Upazila/Municipality	Number of Union	Allocation Till May 18, 2022			Allocation Till May 19, 2022			Total		
			Rice (in Metric ton)	Dry food (bag)	Money (in BDT)	Rice (in Metric ton)	Dry food (bag)	Money (in BDT)	Rice (in Metric ton)	Dry food (bag)	Money (in BDT)
1	Bijanibazar	11	6	-	-	-	-	100,000	6	0	100,000
2	Bishhonath	9	6	300	100,000	6	100	100,000	12	400	200,000
3	Companiganj	6	12	500	100,000	12	100		24	600	100,000
4	Goainghat	12	22	100	100,000	24	-		46	100	100,000
5	Jointapur	6	12	600	100,000	12	-		24	600	100,000
6	Kanaighat Upazila and Municipality	10	39	500	100,000	11	-		50	500	100,000
7	Sylhet Sadar	7	14	450	-	18	250		32	700	0
8	Jokiganj	10	18	-	-	2	-	100,000	20	0	100,000
9	South Surma	8	5	100	-	-	-	100,000	5	100	100,000
10	Golapganj Upazila and Municipality	12	12	-	-	-	-	100,000	12	0	100,000
11	Balaganj	6	-	-	-	-	-	100,000	0	0	100,000
12	Osmaninagar	8	-	-	-	-	-	100,000	0	0	100,000
13	Fenchuganj	5	-	-	-	-	-	100,000	0	0	100,000
14	Sylhet City Corporation	-	3	94	-	-	-		3	94	0
Total		110	149	2644	500000	85	450	800000	234	3094	1300000

Source: DRRD, Sylhet

**Non Government Response:** BDRCS allocated BDT 200,000 for Sylhet unit and BDT 100,000 for Sunamganj Unit to provide dry-food assistance among the flash flood affected households. In addition to that BDRCS also allocated total 35,000 water purification tablets; 1,125 jerrycans and 500 hygiene parcels for Sylhet and Sunamganj unit to meet the emergency need of affected people.

**Needs Overview:** As per the published SOS form till to date, there is an immediate need of emergency treatment, shelter, food (rice), dry food and Cash support in the affected area.

### About the Report

This report has been prepared with the technical support from Information Management Working Group (IMWG) and Situation update from several secondary sources.

**Feedback and Contacts:** [Kaiser.Rejve@care.org](mailto:Kaiser.Rejve@care.org); [fuadur.rabbi@care.org](mailto:fuadur.rabbi@care.org)

**For Regular Updates:** <https://www.humanitarianresponse.info/en/operations/bangladesh/needs-assessment-working-group>

**About the Working Group :** The Needs Assessment Working Group (NAWG) is a platform for government and non government humanitarian agency under Humanitarian Coordination Task Team (HCTT). The secretariat of the Working Group is hosted by CARE Bangladesh, “**Supporting Bangladesh Rapid Needs Assessment (SUBARNA) II Project.**”

