



## Key Immediate Needs and Preliminary Impact Assessment: North Eastern Flash Flood, May 2022 Bangladesh



**Need Assessment Working Group (NAWG),  
Bangladesh**

**Date: 30 May 2022**  
(updated on 07 June 2022)

# BANGLADESH

North-Eastern Flash Flood 2022: Key Immediate Needs and Preliminary Impact Assessment

## Coordinated efforts of



## Needs Assessment Working Group

**About the Working Group :** The Needs Assessment Working Group (NAWG) is the platform for government and non-government humanitarian agencies under Humanitarian Coordination Task Team (HCTT). The secretariat of the Working Group is hosted by CARE Bangladesh under the “Supporting Bangladesh Rapid Needs Assessment (SUBARNA) II Project.”

Implemented By



Funded By



**Disclaimer:** This material has been funded by UK aid from the UK government, however the views expressed do not necessarily reflect the UK government’s official policies.

## Table of Contents

|   |    |
|---|----|
| <b>Table of Contents</b> .....  | 2  |
| <b>List of Tables</b> .....   | 4  |
| <b>List of Figures</b> .....  | 4  |
| <b>Executive Summary</b> .....  | 5  |
| <b>Key Findings</b> .....   | 6  |
| <b>Key Recommendations</b> .....  | 7  |
| <b>Sectoral Key Findings</b> .....  | 8  |
| <b>Brief Overview of North Eastern Flash Flood</b> .....  | 15 |
| <b>Analysis Methodology and Limitations</b> .....   | 16 |
| <b>Impact Analysis: Overall</b> .....   | 16 |
| <b>Disruption and sufferings</b> .....  | 19 |
| <b>Economic Disruption:</b> .....   | 19 |
| <b>Social and Service provision disruption:</b> .....   | 19 |
| <b>Physical Sufferings:</b> .....   | 20 |
| <b>Mental Sufferings:</b> .....   | 21 |
| <b>Social Sufferings:</b> .....   | 21 |
| <b>Sectoral Analysis (Damage and Disruption, Distress, Needs and Priorities, Recommendations)</b> ..... | 22 |
| <b>Child Protection</b> .....   | 22 |
| <b>Situation overview</b> .....   | 22 |
| <b>Key Needs &amp; Priorities</b> .....   | 23 |
| <b>Immediate recommendations (3-6 months)</b> .....   | 23 |
| <b>Medium/long term recommendations (beyond 6 months)</b> .....   | 23 |
| <b>Displacements Management</b> .....   | 24 |
| <b>Situation Overview</b> .....   | 24 |
| <b>Key Needs &amp; Priorities</b> .....   | 25 |
| <b>Immediate recommendations (3-6 months)</b> .....   | 25 |
| <b>Medium/long term recommendations (beyond 6 months)</b> .....   | 25 |
| <b>Education</b> .....  | 26 |
| <b>Situation overview</b> .....   | 26 |
| <b>Key Needs &amp; Priorities</b> .....   | 27 |
| <b>Immediate recommendations (3-6 months)</b> .....   | 27 |
| <b>Medium/long term recommendations (beyond 6 months)</b> .....   | 27 |
| <b>Food Security and livelihoods</b> .....  | 27 |
| <b>Situation overview</b> .....   | 27 |

|   |           |
|---|-----------|
| Key Needs & Priorities.....                                     | 29        |
| Immediate recommendations (3-6 months) .....                    | 29        |
| Medium/long term recommendations (beyond 6 months) .....        | 30        |
| <b>Gender Based Violence (GBV).....</b>                         | <b>30</b> |
| <b>Situation overview .....</b>                                 | <b>30</b> |
| <b>Key Needs &amp; Priorities.....</b>                          | <b>31</b> |
| <b>Immediate recommendations (3-6 months) .....</b>             | <b>31</b> |
| <b>Medium/long term recommendations (beyond 6 months) .....</b> | <b>31</b> |
| <b>Gender in Emergency .....</b>                                | <b>32</b> |
| <b>Situation overview .....</b>                                 | <b>32</b> |
| <b>Key Needs &amp; Priorities.....</b>                          | <b>32</b> |
| <b>Immediate recommendations (3-6 months) .....</b>             | <b>33</b> |
| <b>Medium/long term recommendations (beyond 6 months) .....</b> | <b>33</b> |
| <b>Health including SRHR.....</b>                               | <b>34</b> |
| <b>Situation overview .....</b>                                 | <b>34</b> |
| <b>Key Needs &amp; Priorities.....</b>                          | <b>34</b> |
| <b>Immediate recommendations (3-6 months) .....</b>             | <b>34</b> |
| <b>Medium/long term recommendations (beyond 6 months) .....</b> | <b>34</b> |
| <b>Nutrition .....</b>  | <b>35</b> |
| <b>Situation overview .....</b>                                 | <b>35</b> |
| <b>Key Needs &amp; Priorities.....</b>                          | <b>36</b> |
| <b>Immediate recommendations (3-6 months) .....</b>             | <b>36</b> |
| <b>Medium/long term recommendations (beyond 6 months) .....</b> | <b>36</b> |
| <b>Shelter.....</b>   | <b>36</b> |
| <b>Situation overview .....</b>                                 | <b>36</b> |
| <b>Key Needs &amp; Priorities.....</b>                          | <b>37</b> |
| <b>Immediate recommendations (3-6 months) .....</b>             | <b>37</b> |
| <b>Medium/long term recommendations (beyond 6 months) .....</b> | <b>38</b> |
| <b>WASH .....</b>   | <b>38</b> |
| <b>Situation overview .....</b>                                 | <b>38</b> |
| <b>Key Needs &amp; Priorities.....</b>                          | <b>38</b> |
| <b>Immediate recommendations (3-6 months) .....</b>             | <b>39</b> |
| <b>Main recommendations (Early recovery/Recovery).....</b>      | <b>39</b> |
| <b>Government and Non-Government Response.....</b>              | <b>40</b> |
| <b>Affected Community Needs: Immediate Needs.....</b>           | <b>42</b> |
| <b>Geographic Priorities.....</b>                               | <b>44</b> |

|  |    |
|--|----|
| Annexes .....  | 45 |
| Annex 01: Acknowledgement-1 (Advisory Panel/Core Analysis Team) .....                    | 45 |
| Annex 02: Acknowledgement-2 (Field Assessment Team) .....                                | 46 |
| Annex 03: Government SoS From and compiled information on Flood shelter Management ..... | 45 |
| Annex 04: Dataset and Tools .....  | 46 |
| Contacts and Update .....  | 46 |

## List of Tables

|  |    |
|--|----|
| Table 1 Affected Population (Desegregated by Sex, Age and Gender) .....              | 16 |
| Table 2 Approximate percentage of the children (0-18) affected .....                 | 22 |
| Table 3 Approximate percentage of children detached from family .....                | 23 |
| Table 4 Where displaced people staying now .....                                     | 24 |
| Table 5 Damage and Distress (WASH indication situation of Displacement) .....        | 25 |
| Table 6 Disruption/Distress (Education) .....  | 26 |
| Table 7 Approximate percentage of the affected pregnant women/lactating mother ..... | 34 |
| Table 8 Disruption/Distress (WASH).....  | 38 |
| Table 9 Government Response as of May 30,2022(source-ERC, DDM) .....                 | 40 |
| Table 10 Non Government Response .....   | 42 |
| Table 11 Affected Community Needs .....  | 42 |

## List of Figures

|   |    |
|---|----|
| Figure 1 % of response on “Water supply and Sanitation services disruption” in Netrokona, Sunamganj and Sylhet.....   | 11 |
| Figure 2 % of respondents indicating “People been displaced for 1 to 2 weeks” and “Mental health and Psycho-social distress” among affected population..... | 11 |
| Figure 3 MAP Satellite observed Flooding .....  | 15 |
| Figure 4 MAP-Approximate Percentage of People Affected .....  | 17 |
| Figure 5 MAP-Approximate Percentage of Wards/Village Affected .....   | 18 |
| Figure 6 MAP-Approximate Percentage of Inundated Area by Union .....  | 18 |
| Figure 7 Economic Activity Disruption.....  | 19 |
| Figure 8 Service Provision Disruption .....   | 19 |
| Figure 9 Social Service Disruption.....   | 20 |
| Figure 10 Physical Sufferings.....  | 20 |
| Figure 11 Mental Health and Psycho-social distress.....   | 21 |
| Figure 12 Social Sufferings .....   | 21 |
| Figure 13 MAP - Approximate Percentage of Displaced Population .....  | 24 |
| Figure 14 MAP-Approximate percentage of Crop land Damage .....  | 29 |
| Figure 15 % of respondents indicating possibility of Physical sufferings as a result of Flash Flood in Sunamganj and Sylhet.....                            | 30 |
| Figure 16 % of respondents indicating “Damage to Cropland and livestock” and “Social, mental and psychosocial sufferings distress” .....                    | 30 |
| Figure 17 MAP-Approximate percentage of HH damage.....  | 37 |
| Figure 18 MAP-Non-Government Response .....   | 41 |
| Figure 19 MAP: Geographic Severity Ranking .....  | 44 |

## Executive Summary

The northeast part of Bangladesh experienced a flash flood that started on the week of 15 May 2022. The intensity of the flood increased on 18 May 2022 as the major river 'Surma' and 'Kusiara' started to overflow 140 cm above the danger level. Alongside that, heavy rainfall in that areas and northeastern Indian states was the main cause of this flood. The Sylhet meteorological department stated that the continuous rain was an effect of Cyclone Asani. It has taken effect among 1.2 million people across three districts - Sylhet, Sunamganj, Habiganj while Sylhet and Sunamganj were affected most severely. In this flood, around 418,546 people were exposed to inundation, as projected by the EU's Copernicus Emergency Management Services (CEMS) however actual marooned families estimated to be 65,087. Their woes coupled with 150,000 families in Sylhet and Sunamganj had been living without power for three days since 17 May 2022. Also most of these areas were affected by the April 2022 early flash flood. Notably, many areas of Sylhet city went underwater and due to poor drainage facilities, in some areas water got clogged and spread odor now. Also for the city dwellers, it was news as the Surma river surpasses previous water level record since 1958 according to the FFWC.

Agricultural lands have been reported to inundate mostly damaging major cash crop of Boro, Aus and Aman. Hectares of summer vegetable, nuts and fruits land were also damaged. The Department of Agriculture Extension (DAE) informs those 17,760 hectares of cropland including summer vegetation are affected by this flood. Daily life has been severely disrupted due to inundated houses, tube wells and toilets. Many affected people took shelter, mostly at schools and relatives' houses as there was damage to family shelters. As reported, approximately 1,096 tube wells and 3,875 sanitation facilities were fully damaged.

The GoB has mobilized resources to support affected communities. Assistance consists of – cash grants, rice, dry food packages, water-purification tablet and disinfection of tube-wells, preparation of flood shelters, and mobile medical teams. In addition to it, different non-government agencies provided and has planned to provide support to the affected communities with cooked food, multipurpose cash grants, safe drinking water and jerry can, and hygiene parcels. Additionally, a coordinated humanitarian response will be needed to supplement these efforts, primary to ensure that the most vulnerable communities receive targeted humanitarian assistance. Analysis of this assessment looked at identifying risks of vulnerable populations due to their geographical and socio-economic conditions.

A medium to longer-term (06 to 12 months) early recovery and reconstruction effort will be needed to repair of damaged houses, embankments, roads, sources of safe drinking water, sanitation facilities. Restoration of livelihood with specific support to farmers who got affected by the flood should be prioritized.

Kindly note, that the floodwater has already receded or has been receding from the affected areas, however, it dented the lives and livelihood of the people. Even some of the community people were also affected in the early April 2022 flood and still recovering from it. Also, it has been predicted that

### **Key Damage Information from D-Form & Government response**

- District affected: Sylhet, Sunamganj, Hobigonj
- # of Sub-district & Union affected: 121 unions of 23 sub-district
- Death: 0
- Total affected families: 1,237,348
- Marooned families: 65,087
- # of flood shelter open: 346
- # of people took shelter: 5146
- Allocated GR rice: 780.63 MT
- Allocated GR Cash: BDT 29,07,500

*Source: MoDMR, as of 24 May 2022*

this year's monsoon will arrive earlier than usual, which may contribute to the woes of the people's suffering. Considering this and the full monsoon season ahead, a long-term impact on the livelihood and food security of people is predicted. Moreover, till now the supports provided by GoB and non-government agencies are utterly inadequate to support this number of the affected population. About 1.2 million people affected, including 154,222 children are affected in Sylhet, Sunamganj and Habiganj. They need immediate, early recovery and long-term support to get back to their normal life. Start Fund Bangladesh allocated approx. GBP 200,000 to reach 3206 households in Sylhet & Sunamganj district, with this amount approximate total fund allocation from non-government humanitarian agencies including Bangladesh Red Cross & Red Crescent Society so far estimated to be USD 800,000 which likely would be able to reach 12,000 households to address the immediate needs. However, this reach number still fraction of total no. of people affected population mean there many families still required emergency & recovery support. Since monsoon is still at early stage and as per latest forecast from FFWC above than normal rainfall expected during this monsoon mean more sufferings will be awaiting for most vulnerable affected community which required urgent and coordinated action from Government & Non-Government humanitarian agencies to reduce sufferings and restore their resilience.

## Key Findings

The flash flood hit five districts of northeast Bangladesh, among which Sylhet and Sunamganj took severe impact. In many flood-affected areas, the water has already receded, however, it stained its marks in many ways. Several situation reports were shared by Government, non-Government and these assessment findings showed the overall impacts of the flash flood on people's lives and livelihoods.

The survey findings show most of the flood-affected communities are facing hunger, scarcity of basic services and experiencing distress in terms of physical, social, and emotional aspects. The distress-driven needs are ranked as Key Immediate Needs (KIN) which were prioritized according to their ranked value. Based on this prioritization from the survey regarding the immediate needs of the basic key services, their related sectors were prioritized according to Sphere Handbook: WASH (drinking water supply), Food Security & Livelihood (food package – rice, lentils, oil, etc.), shelter (repair and maintenance of shelter) and health including reproductive health and hygiene facilities for adolescent girls and women. These overall losses will disproportionately impact on women, adolescent girls, children, and other vulnerable groups. Besides, based on the contextualized INFORM Risk Index) the composite impact vulnerability and response capacity analyzed, the top ten priority geographic areas (upazilas) are (in priority order)– Zakiganj, Dowarabazar, Gowainghat, Chhatak, Jaintapur, Companiganj, Shantiganj, Dakshin Surma, Kalmakanda, and Bishwambarpur. This assessment indicates that –

- 77.6% Household reported that household food storage has been destroyed due to the flood. Access to food is already an issue due to economic loss, loss of production and price hike and around 75.4% of people has adopted negative coping strategy. Around 69% reported difficulty in cooking food.
- Overall, 48.2% and 54.4% respondents reported loss of livestock and fisheries respectively (More than 20%). Alongside it, livestock and poultry feed scarcity is reported, and availability and cost are becoming an issue.
- Around 50% of the assessed unions highlighted concern regarding the privacy of the affected people of whom 40% are children who are more vulnerable than adults and at a higher risk of violence and abuse.

- In Sylhet and Sunamganj, more children are being affected by this flood, compared to Hobigonj & Netrokona, and it is associated with the intensity of the flood.
- The education services overall disrupted in the three affected districts by 75% (Netrokona district 11%, Sunamganj district 94%, and Sylhet district 82%), and school dropouts increased by 5% in the three districts (11% in Netrokona district, Sunamganj 72% and Sylhet 51% respectively).
- 59.8% and 46.7% of respondents in Sunamganj and Sylhet respectively viewed the impact of floods on households will drive the cause of early marriage in families.
- In Sylhet 36.2% of respondents in Sylhet view gender-based violence as a potential cause of mental distress among the affected population, and the response rate for the same is around 41.5% in Sunamganj.
- In total 13% of assessed unions, most of the houses (*more than 60%*) in the respective unions have been damaged either fully or partially.
- In the affected areas, 80% of the surveyed union reports to have disrupted water supply.
- Sylhet and Sunamganj housed the most displaced population compared to Netrokona. In terms of displacement, in Sylhet 21 unions (representing 20% of assessed unions) are facing significant displacement, with over 40% of the population currently displaced.
- Malnutrition: by this time HEOC (Control Room) has recorded a total of 349 Acute Watery Diarrhoea cases and it will continue to increase the number of cases which will lead to malnutrition. Although there is no age segregated data, experience says children are the most diarrheal affected age group in this country due to flood. No death has been occurred due to this Flash Flood.

The overall findings depict that the affected community needs support on key immediate needs as well as medium/long-term support. It is also essential that the support must be gender, protection, and inclusion integrated.

## Key Recommendations

The flood brings sufferings, as well as disruptions to people's lives and livelihood. The key recommendations are –

- Further detailed disaggregated data collection including overall sectoral coverages such as detailed market assessment to update and understand the extent of damage and to identify long-term durable solutions.
- Immediate WASH and food assistance to ensure household of safe drinking waters and safe from different water-borne and communicable diseases.
- Multi-Purpose Cash Grant to ensure that the affected community have adequate access to essential food and non-food items.
- Immediate assistance to restore the damaged shelters and WASH facilities through providing cash assistance along with provision of technical support for finding out durable solution.
- All the supports must be gender, protection, and inclusion integrated.
- Close monitoring of nutritional status of affected population especially under-five children, pregnant and lactating women.
- Street based sex workers (floating) working in Kadamtali, Amberkhana and Surma market area (around 200 people) are in need of support (food, fuel, cooking oil, drinking water, emergency medicine etc.) as they are still unable to start earning their living through sex work.

## Sectoral Key Findings

| Child Protection   |  |
|--|--|
| <p><b>Impact</b></p> <ul style="list-style-type: none"> <li>Losses in livelihood, damage to water and sanitation facilities, and disruption in services, roads, and transport, as a result of this flash flood, will have disproportionate impacts on children in all groups from 0-18 years.</li> </ul>   | <p><b>Key statistics:</b></p> <ul style="list-style-type: none"> <li>Around 70% of the assessed union, affected people having difficulties to cooking food and more than 50 % of assessed unions highlighted concern regarding the privacy of the affected people of whom 40% are children who are more vulnerable than adults and likely to be ended up with the victim of violence.</li> <li>In Sunamganj, 32% of the union reported having affected children, and in Sylhet, the number is 28%.</li> <li>It is reported that few children (10-20%) got detached from the family.</li> </ul>   |
| <p><b>Need and priorities:</b></p> <ul style="list-style-type: none"> <li>Close monitoring, documentation, tracing and reunification of children that are unaccompanied and/or separated</li> <li>Development and delivery of key immediate lifesaving Child Protection messaging across all partners to ensure the protection of the most vulnerable</li> <li>Increased case management and follow-up specifically focusing on referral to services and Mental Health and Psychosocial Support (MHPSS).</li> <li>Community based Child Protection Committees (CBCPC) need to be activated to have coordinated effort in providing services</li> </ul> |  |
| Displacement   |  |
| <p><b>Impact</b></p> <ul style="list-style-type: none"> <li>According to the NAWG Primary Assessment, the flash floods in the north eastern part of Bangladesh have resulted in significant displacement across approximately 33 unions in both Sylhet and Sunamganj districts, with displaced persons taking temporary shelter predominantly with relatives, in government evacuation centres and educational institutes.</li> <li>Findings indicate that the majority of people have been displaced for up to 2 weeks.</li> </ul>  | <p><b>Key statistics:</b></p> <ul style="list-style-type: none"> <li>The NAWG Preliminary Report indicates that in Sylhet, 21 unions (representing 20% of assessed unions) are facing significant displacement, with over 40% of the population currently displaced. In Sunamganj, 12 unions (15%) are facing significant displacement, with over 40% of the population currently displaced. In Netrakona, there appears to be only minor displacement, with the majority of unions indicating that less than 10% of the population are displaced.</li> <li>In Sylhet and Sunamganj, the findings indicate that the majority of displaced people are staying either with relatives, in educational institutes or in government managed evacuation centres.</li> <li>With regard to the duration of displacement, the findings indicate that in Sylhet, 41 unions (39% of assessed unions) reported displacement for between 24 hours – 1 week, and 57 unions (54% of assessed unions) reported displacement for between 1-2 weeks. In Sunamganj, 26 unions (32% of assessed unions) reported displacement of between 24 hours – 1 week, and 35 unions</li> </ul> |
| <p><b>Needs and priorities:</b></p> <ul style="list-style-type: none"> <li>The NAWG Primary Assessment indicates that the key needs for the affected population are access to clean drinking water, food assistance and repair of toilets and sanitation facilities.</li> <li>Displaced caseloads will require shelter, NFI and livelihood support to enable them to repair and rebuild houses, replace essential household items and re-establish livelihoods.</li> </ul>   |  |

|   |   |
|---|---|
| <ul style="list-style-type: none"> <li>In the medium to long term, it will be important to identify long-term displaced caseloads to support in achieving durable solutions.</li> </ul> | (43% of assessed unions) reported displacement for between 1-2 weeks. |
|---|---|

## Education

|   |  |
|---|--|
| <p><b>Impact</b></p> <p>Educational institutions, mostly government primary schools, will be closed and dropout and less attendance will increase due to disruption on the way to/from the schools and education institutions.</p>  | <p><b>Key Statistics</b></p> <ul style="list-style-type: none"> <li>Over 750 educational institutions, mostly government primary schools, have been closed</li> <li>447 (234 girls) students were affected as 15 UNICEF-supported learning centres have been damaged as of 17<sup>th</sup> May 2022</li> <li>Education services overall disrupted in three districts by 75% (Netrokona district 11%, Sunamganj district 94% and Sylhet district 82%) and school dropouts increased by 5% in three districts (11% in Netrokona district, Sunamganj 72% and Sylhet 51% respectively).</li> <li>Overall, 12% of education institutions are being used as shelter in 3 districts where more concentration was in Sunamganj district which is 17%.</li> </ul> |
| <p><b>Need and priorities:</b></p> <ul style="list-style-type: none"> <li>Provide immediate educational responses to the affected children through the establishment of safe, temporary learning centers/arrange alternative learning spaces and distribution of education (teaching and learning) kits.</li> <li>Provide hygiene and cleaning materials to schools used as shelters</li> <li>Distribution of education kits and materials to the affected learners at home and in shelters</li> <li>Learning Continuity (LC): Provide education kits and materials to the affected learners at home and in shelters.</li> <li>Community/parent mobilization to support the operationalization of the Learning Centre.</li> <li>Coordination with WASH and Child Protection clusters on establishing adequate WASH and protection facilities (including MHPSS) in temporary learning/alternative learning centers</li> <li>Provide drills or training for teachers and students in case of flash flood in Sylhet and Sunamganj</li> <li>Operationalize Standing Operation Procedure (SOP) for floods in Sylhet and Sunamganj</li> <li>Modeling resilient infrastructure—demonstrating schools which will not be flood-prone, such as elevated school design.</li> </ul> |  |

## Food Security and Livelihood

|  |  |
|--|--|
| <p><b>Impact</b></p> <p>Access to food is already an issue due to economic loss, loss of production and price hike</p> <ul style="list-style-type: none"> <li>Agriculture is the worst affected sector due to the previous April 2022 flood. <ul style="list-style-type: none"> <li>People's coping capacity have been already exhausted.</li> <li>Livestock feed would be an issue of concern due to damaged fodder,</li> </ul> </li> </ul> | <p><b>Key statistics:</b></p> <ul style="list-style-type: none"> <li>77.6% Household reported that household food storage is been destroyed due to the flood.</li> <li>75.4% of people has adopted negative coping strategy.</li> <li>69% reported difficulty in cooking food.</li> <li>48.2% respondents reported loss of livestock. (More than 20%)</li> <li>54.4% respondents reported loss of Fisheries. (More than 20%)</li> <li>Highest damage was reported in the Sylhet district 33% crop land damage, 14% livestock damage, 37% fisheries damage 60% or more sectoral damage.</li> <li>96% of respondents reported that agricultural activities (horticulture, fisheries, poultry, and livestock) have been disrupted.</li> </ul> |
|--|--|

|   |   |
|---|---|
| <p>straw, and green fodder.</p> <ul style="list-style-type: none"> <li>• Livestock care and feeding has been disrupted.</li> <li>• Disruption of food storage facilities</li> <li>• Coping capacity exhausted and adopted negative coping strategies.</li> <li>• Loss of agriculture production will negatively impact of food price</li> </ul> | <ul style="list-style-type: none"> <li>• About 89% of the respondents reported the disruption of livelihoods and income generating activities in Sylhet district whereas about 85% of the respondents cited they have been disrupted in Sunamganj district.</li> <li>• Local market functionalities have also been disrupted according to 57% of the respondents from Sunamganj and 63% of the respondent from the Sylhet district.</li> <li>• 91% and 78% of respondents reported service provision (livestock care and feeding) has been disrupted in Sunamganj and Sylhet respectively. However, service provisions like local storage facilities have been disrupted almost in the same percentages in both Sunamganj (57%) and Sylhet (56%) districts.</li> <li>• According to Department of Agriculture Extension, 17,760 hectares of crop land have been damaged out of 733,506 hectares of available crop land as of 26 May 2022 from the flood affected 12 districts (more official data are coming). Major crops that have been affected most in these districts are Boro, Aush, Oil seed, summer vegetables, and fruits were of prime concern. So far 55,696 farmers have been affected in 4 districts out of 12 districts (more are coming).</li> <li>• According to the Department of Livestock Services data on Sylhet Division, 167,817 cows, 8,717 buffalo, 43,478 goats, 20,379 sheep, 728,593 poultry, and 405,514 ducks were affected by the flood as of 30 May 2022.</li> <li>• Death of 105 livestock animals (cattle) and 22,934 poultry in Sylhet division have been reported by DLS as of 30 May 2022.</li> <li>• 10,071 acre pastureland has been damaged according to the DLS.</li> <li>• 17,34 MT straw worth of BDT 8477500 have been damaged as reported by the DLS.</li> <li>• 258 MT green fodder worth of BDT 1,290,000 have been damaged as reported by the DLS</li> <li>• Total livestock damage is worth almost 1 crore BDT (more data are coming).</li> <li>•</li> <li>• 100% of the respondents reported livestock care and feeding has been disrupted (SCI)</li> <li>• 75% of respondents reported disruption of local storage facilities (SCI)</li> <li>• According to MoFood, as of 26 May 2022 total food grain of amount 1215000 MT were available at govt storage and it is satisfactory compared to the last year's storage.</li> <li>• According to the MoF, 8.33% price hike is reported for coarse rice compared to the last week and increasing.</li> </ul> |
|---|---|

| Gender Based Violence  |   |
|--|---|
| <p><b>Impact</b></p> <ul style="list-style-type: none"> <li>• Loss in livelihood, damage in water and sanitation facilities, disruption in services, roads, and transport, because of the northeastern flood, will have</li> </ul> | <p><b>Key statistics:</b></p> <ul style="list-style-type: none"> <li>• In Sylhet 36.2% respondents in Sylhet view gender-based violence as a potential</li> </ul> |

disproportionate impacts on women, girls and other vulnerable groups.

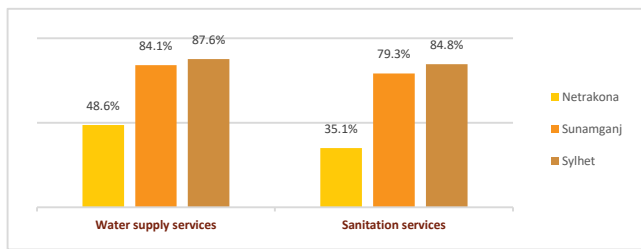


Figure 1 % of response on “Water supply and Sanitation services disruption” in Netrokona, Sunamganj and Sylhet

**Needs and priorities:**

- Distribution of dignity kits customized to meet the needs and reduce GBV risks of women, girls, and third gender individuals and other vulnerable groups, including persons with disabilities.
- Distribution of menstrual health/hygiene management kits to women, adolescent girls, including to particularly to persons with disabilities to meet menstruation needs and raise awareness on sexual and reproductive health issues.
- Cash support to women-headed households, pregnant women, households with persons with disabilities for them to access essential health services including reproductive and maternal health, GBV referral including psychosocial support
- Equip certain health facilities with kits to provide clinical management of rape (CMR) treatment to survivors of GBV.

cause of mental distress among the affected population, and the response rate for the same is around 41.5% in Sunamganj.

- 59.8% and 46.7% respondents in Sunamganj and Sylhet respectively viewed the impact of flood on households will drive the causes of early marriage in families.

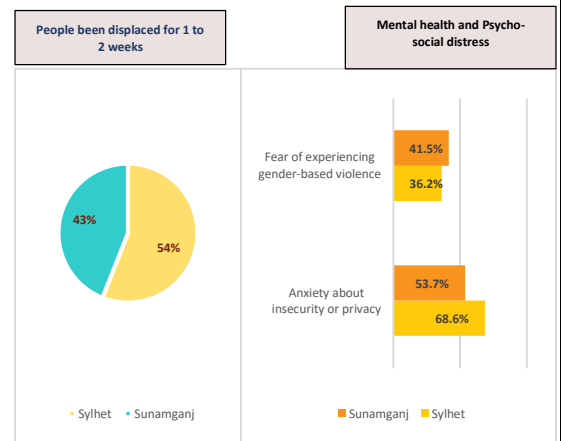


Figure 2 % of respondents indicating “People been displaced for 1 to 2 weeks” and “Mental health and Psycho-social distress” among affected population.

food intake within household will be a critical impact of the flood.

- Although data does not show much displaced population 75.6% and 87.6% respondents in Sunamganj, and Sylhet respectively are saying affected population are staying at other places.

| Gender in Emergency   |   |
|---|---|
| <p><b><u>Impact</u></b></p> <ul style="list-style-type: none"> <li>Loss and damage of livelihood and income generating activities, disruption on services of water, sanitation, education, health, nutrition, antenatal, postnatal, neonatal care and transport, as a result of the northeastern flood, will have disproportionate impacts on women, girls, other gender groups.</li> </ul>   | <p><b><u>Key statistics:</u></b></p> <ul style="list-style-type: none"> <li>24% respondents in Sylhet viewed 20%-40% women/women headed household are being affected. In Sunamganj, 30% respondents view 10%-20% women/women headed household are being affected.</li> <li>11% respondents in Sylhet viewed the flood have made negative impact on most of the pregnant women/lactating mother.</li> <li>59.8% and 46.7% respondents in Sunamganj and Sylhet respectively viewed the impact of flood on households will drive the causes of early marriage in families.</li> <li>86.6% and 81.9 % in Sunamganj and Sylhet respectively views irregularity in food intake within household will be a critical impact of the flood.</li> <li>85.4% and 89.5% in Sunamganj and Sylhet respectively views Physical sufferings difficulty in cooking food.</li> <li>57.3% and 61.9% in Sunamganj and Sylhet respectively views Physical sufferings/difficulty in maintaining personal and menstrual hygiene</li> <li>In Sylhet 36.2% respondents in Sylhet view gender-based violence as a potential cause of mental distress among the affected population, and the response rate for the same is around 41.5% in Sunamganj.</li> </ul> |
| <p><b><u>Needs and priorities:</u></b></p> <ul style="list-style-type: none"> <li>Essential food packages and Multi-Purpose Cash Grant, particularly to pregnant and lactating mothers, children, widow, female headed households and the elderly.</li> <li>Cash for work schemes to engage more women labor.</li> <li>Agricultural inputs, especially vegetable seeds and fertilizers for women</li> <li>Livestock assistance: livestock restocking, feed, veterinary medicines, and services.</li> <li>Repairing or installation of the HH level latrines; special attention to be given to FHHs.</li> <li>Cash support to women-headed households to ensure their food intake and restore their livelihood and income generating activities.</li> <li>Cash support to household with pregnant women, lactating mothers, widow, persons with disabilities to ensure equitable access to essential health services including reproductive and maternal health, GBV referral including psychosocial support</li> <li>Ensure safety and security for women, adolescent girls and children in shelters and places where people are still living by engaging security forces and volunteers like Ansar, VDP as well as engaging women led CSOs for creating awareness on safety, and to ensure GBV and child protection services.</li> <li>Psychosocial services for women, girls and children.</li> </ul> |   |

| Health Including SRHR  |  |
|--|--|
| <p><b><u>Impact</u></b></p> <p>Increase of communicable diseases as the water recedes.</p> | <p><b><u>Key Statistics</u></b></p> <ul style="list-style-type: none"> <li>In last 9 days (18 -26 May 2022), National Health Emergency Operations Centre (HEOC) and Control Room recorded a total of 469 Cases (349 from Acute Watery Diarrhoea, 32</li> </ul> |
| <p><b><u>Need and priorities:</u></b></p>  |  |

|  |   |
|--|---|
| <ul style="list-style-type: none"> <li>• Enhance Surveillance system and health education programme to prevent communicable disease outbreak</li> <li>• Alert Rapid Response Teams (RRTs) to investigate impending disease outbreak</li> <li>• Replenish emergency drugs and medical supplies</li> <li>• Health care services in affected communities to manage health problems including particularly service for the pregnant women.</li> <li>• Disease surveillance and health education &amp; promotion for early detection and prevention of communicable disease.</li> </ul> | <p>from Skin Diseases, 14 from ARI, 10 from Lightning, 09 near to drowning and 55 from others)</p> <ul style="list-style-type: none"> <li>• According to NAWG preliminary assessment, it is reported that 28% of the responses in Sylhet reported having effect on few pregnant mothers.</li> </ul> |
|--|---|

| Nutrition  |   |
|--|---|
| <p><b>Impact</b></p> <ul style="list-style-type: none"> <li>• Disruption of essential health and nutrition services which will result in deterioration of nutrition status, particularly wasting.</li> </ul>   | <p><b>Key statistics:</b></p> <ul style="list-style-type: none"> <li>• Health and Nutrition service provision has disrupted in Netrokona (22%), Shunamganj (93%) and Sylhet (87%).</li> <li>• As per MICS 2019, wasting rate of Sylhet (11%), Netrokona (11.1%) and Sunamganj (7.6%). Sylhet and Netrokona have higher rate of wasting than the national average (9.8%).</li> <li>• Pre-flash flood dietary diversity was already sub-optimal at 23.6% in Sylhet division and 23.7% in Mymensingh division (MICS 2019).</li> <li>• As per the latest reports of DPHE (Dated 21 May 2022), a number of 476 tubewell in Sylhet and 620 tubewell in Sunamganj got damaged in this week long flood. Report from Divisional Director, Health (Dated 27 May 2022) says, 46 persons suffered from diarrhoea in this flood period.</li> </ul> |
| <p><b>Need and priorities:</b></p> <ul style="list-style-type: none"> <li>• Restoration and increase the frequencies of Infant and Young Child Feeding counseling and maternal nutrition counseling</li> <li>• Provision of micronutrient supplements for PLW and maternal nutrition counselling to improve nutritional status and food diversity</li> <li>• Disaggregated Data and information (by sex, age and disability) on children and mothers (Pregnant and Lactating women- PLW) to be available from the very first day of the emergency, more specifically those who take shelter in the flood centers</li> <li>• Replenish the emergency Nutrition supplies (Therapeutic food) in the district and upazila hospitals</li> <li>• Capacity strengthening for service provider on SAM management and Nutrition in Emergency (NIE)</li> </ul> |   |

| Shelter  |  |
|--|--|
| <p><b>Impact</b></p> <ul style="list-style-type: none"> <li>• Houses are fully or partially damaged due to the flash food in Haor; particularly in Sunamganj &amp; Sylhet districts.</li> <li>• Since most of the areas in Sylhet and Sunamganj inundated, and several people have displaced.</li> <li>• People, whose houses were damaged and destroyed, have lost their usual living space,</li> </ul> | <p><b>Key statistics:</b></p> <ul style="list-style-type: none"> <li>• According to the NAWG preliminary assessment, it is reported that in total 13 % of assessed unions, most of the houses (<i>more than 60%</i>) in the respective unions have been damaged either fully or partially.</li> <li>• In 21% of assessed unions, many houses (<i>between 40% to 60%</i>) have been impacted due to flash flood.</li> </ul> |

|   |   |
|---|---|
| <p>and facing difficulties to ensure minimum living space with dignity, privacy, and protection from weather event</p>  | <ul style="list-style-type: none"> <li>• There is no official damage information issued by government yet</li> <li>• In 11 assessed unions (<i>out of 224 union</i>), the need of repairing and maintenance support for shelter is identified as priority need. Similarly, 4 unions identified shelter need as second priority and 12 unions as third priority need.</li> </ul> |
| <p><b><u>Need and priorities:</u></b></p> <ul style="list-style-type: none"> <li>• The need of emergency shelter and essential household items have been reported.</li> <li>• At the same time, the need of repairing and maintenance of houses has been identified in some of the affected unions</li> </ul> |   |

| WASH   |  |
|--|--|
| <p><b><u>Impact</u></b></p> <ul style="list-style-type: none"> <li>• WASH facilities are inundated. Drinking water sources are affected and sanitation facilities are fully and partially damaged.</li> <li>• WASH sector is severely affected particularly in Sunamganj &amp; Sylhet districts.</li> <li>• A significant number of union (67) population are now without access to safe drinking water as flash floods inundated and destroyed WASH infrastructure and contaminated water sources.</li> <li>• This situation risking outbreak of water-borne diseases since most of the areas in Sylhet and Sunamganj inundated, and a number of people have displaced.</li> <li>• In flood shelters, the number of WASH facilities is not adequate, which is not sufficient to ensure privacy, security and dignity for women, people with disability and children.</li> </ul> | <p><b><u>Key statistics:</u></b></p> <ul style="list-style-type: none"> <li>• Over four million people of these districts are affected by the flood.</li> <li>• Including over 1.5 million children are at risk.</li> <li>• WASH facilities were affected over 67 unions of 13 upazilas.</li> <li>• 1096 tube wells are damaged, 3875 sanitation facilities were fully damaged (approx).</li> <li>• Potable water has always been scarce in these regions due to low laying area and arsenic contamination.</li> <li>• A significant number of affected populations are now without access to safe drinking water as inundation destroyed WASH infrastructure and contaminated water sources.</li> <li>• Hand washing facilities are scarce, and as a result, maintaining safe hygiene practices and COVID 19 infection prevention and control is hampered.</li> </ul> |
| <p><b><u>Need and priorities:</u></b></p> <ul style="list-style-type: none"> <li>• Immediate needs are the swift provision of safe drinking water supply, temporary emergency latrine facilities.</li> <li>• Repair/construction of damaged latrines/new temporary latrines for the most vulnerable people, including those with disabilities and elderly people;</li> <li>• WASH services and behavior change messages, especially in health care facilities and shelters is critical.</li> <li>• Coordinating and monitoring community interventions in the most affected areas, as well as those with heightened numbers of COVID-19 cases (in coordination with the health cluster).</li> </ul>  |  |

## Brief Overview of North Eastern Flash Flood

The heavy rainfall from 9 May 2022 onwards and out rushed water from North-eastern Indian states there is an increase of water level observed in the Northeastern part of Bangladesh which led to a medium to severe flood in that region. About 1.2 M people have been affected in five districts as Sylhet, Sunamganj, Habiganj, Netrokona and Maulvibazar, while Sylhet and Sunamganj districts were affected the most severally. As per EU's Copernicus Emergency Management Services (CEMS), inundation exposed Population is around 418,546 however actual marooned families estimated to be 65,087. It is estimated that the children are at increased risk of waterborne diseases, drowning, and malnutrition due to extensive flood water. Also as per the Emergency Response Centre (ERC) of the Department of Disaster Management (DDM), about 1.2 million people affected, including 154,222 children in Sylhet, Habiganj and Sunamganj district. According to FFWC (Flood Forecasting and Warning Centre), the major river 'Surma' and 'Kusiara' started overflown 140 cm above the danger level on 18 May 2022. Onrush water damaged 17,760 hectares of crop lands including summer vegetables, as reported by the DAE. Department of Public Health Engineering (DPHE), 370 tube wells and 3,659 toilets were affected as of 19 May 2022. Affected people take shelter mostly at schools and relatives' houses as their family shelter structures and vast land are waterlogged. Many people in affected areas are living a very miserable life as they need emergency food and water support immediately. Around 657 Km of 153 roads have been submerged due to a sudden flood (Newspaper report). Communication and transportation have been heavily disrupted due to the inundation of major roads. More than 873 educational institutions have been submerged into water, hampering the education of school-going children. A substantial number of people are now without access to safe drinking water and sanitation facility, which increase the chance of waterborne diseases outbreak. At present, although water is receded in many places but waterlogged in low-lying areas has an adverse effect on lives and assets. The current flood severely economically impacted around 20-30% of the affected people while COVID-19 has already impacted socio-economic stability, especially on food security and livelihoods.

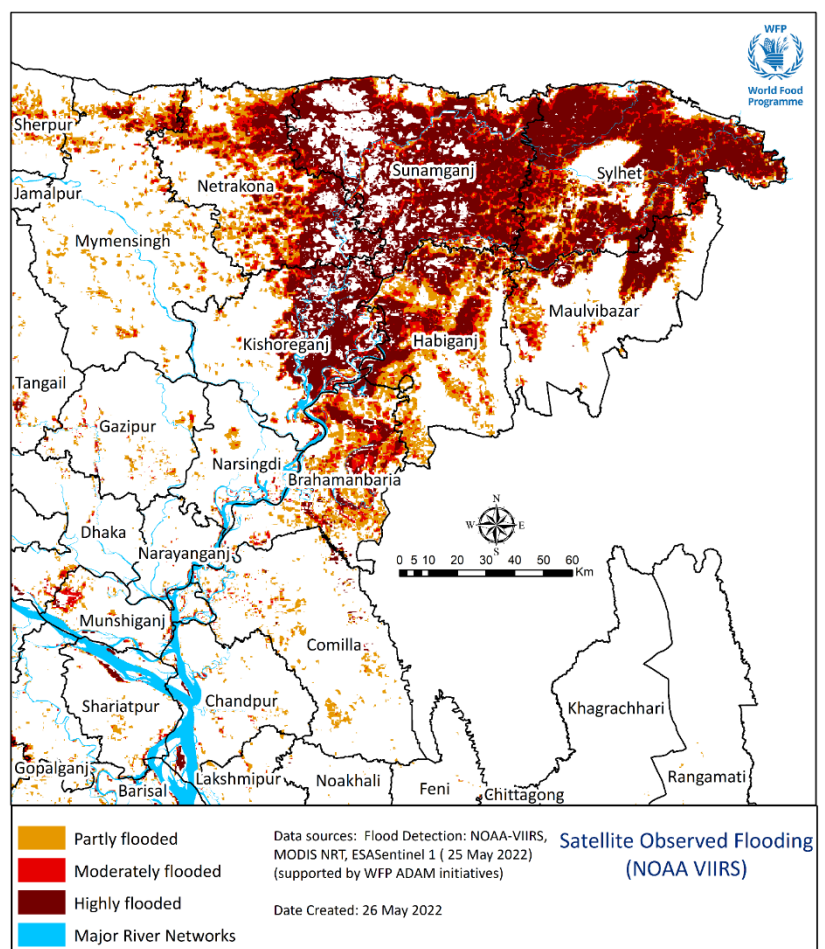


Figure 3 MAP Satellite observed Flooding

## Analysis Methodology and Limitations

The key immediate need (KIN) and preliminary impact assessment cover one city corporation, one municipality, and 223 unions of 21 Upazila of Sylhet, Sunamganj, and Netrokona districts. This assessment adopts preliminary impact and needs assessment tools and methodology of the Needs Assessment Working Group (NAWG) and used the KoBo toolbox as the data collection tool.

The primary purpose of the assessment is to identify the actual impact scenario and identify immediate and mid-term needs through contextualized primary (both GoB and field data collection) and secondary information. The analysis was also done based on baseline secondary pre-crisis information from Government (BBS) and other reliable sources. The sector-specific analysis was done by the respective clusters. The assessment data are collected by more than 10 local, national and international agencies present on the ground.

Respective union Parishad was contacted, and one compiled assessment form per union was completed and used to compile the findings. The assessment took place in the field from 24 and 25 May 2022 with findings being developed from 26-30 May 2022 including data cleaning, interpretation, and analysis. The findings shared here represent the information given by the key informants at the union level as well as relevant information from the GoB report and other secondary data provided by the clusters.

## Impact Analysis: Overall

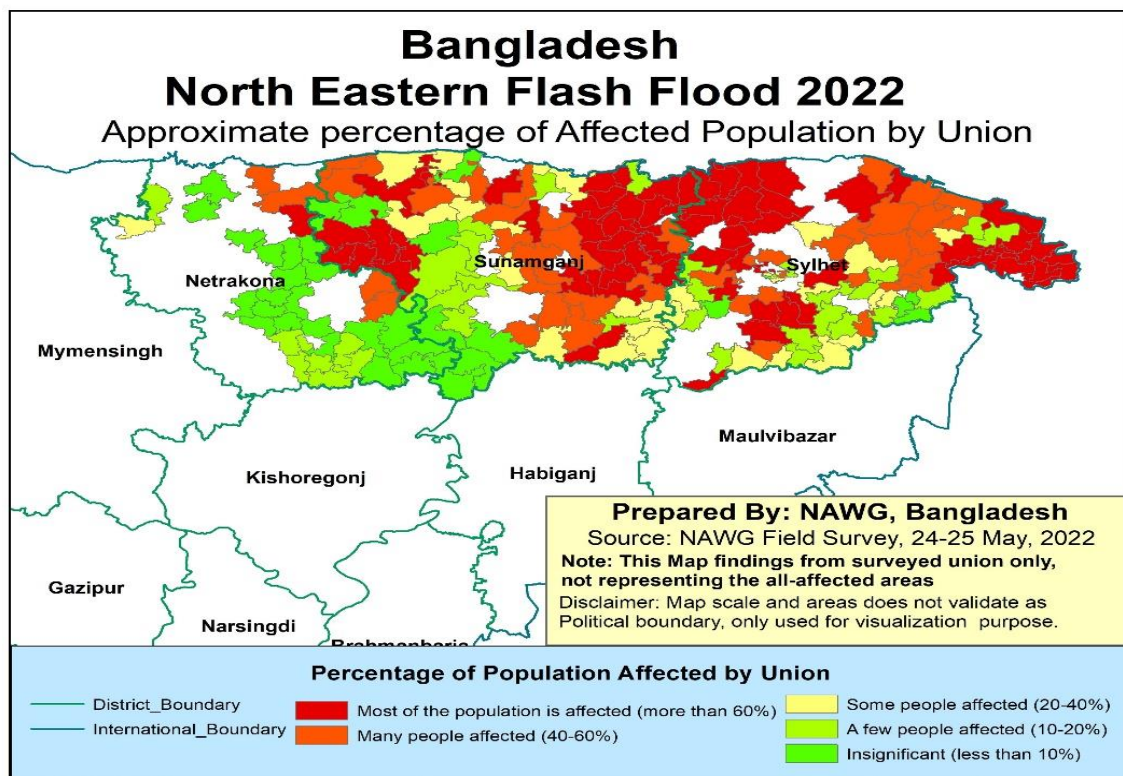
- About 1.23 million people is affected and most of them are from Sylhet & Sunamganj districts.
- Approximately **141,465** people from Kanaighat and Gowainghat union of Sylhet district got affected. More than 300 dwellings in Kanaighat union have been partially or completely damaged, necessitating the urgent need for emergency shelter in this union. Both of these unions are facing **drinking water scarcity** in this emergency situation. (SOS Form, Kanaighat & Gowainghat).
- Flooding in two districts has shut down more than **750** schools, most of which are government primary schools. This can lead to increase in school dropout number.
- WASH (Water, Sanitation, and Hygiene) infrastructures were impacted throughout 67 unions of 13 upazilas. There were approximately **1096 tube wells** and **3875 sanitary facilities** that suffered complete destruction.

**Table 1 Affected Population (Desegregated by Sex, Age and Gender)**

| District     | Total Affected Population | Male           | Female         | Child (0-19 Yr) | Old People (60 yr+) | People with Disability |
|--------------|---------------------------|----------------|----------------|-----------------|---------------------|------------------------|
| Sylhet       | 1,200,000                 | 588,488        | 299,890        | 149,457         | 11,228              | 173                    |
| Sunamganj    | 37,000                    | 18,547         | 9,250          | 4,720           | 351                 | 5                      |
| Habiganj     | 348                       | 173            | 87             | 44              | 3                   | 0.04                   |
| <b>Total</b> | <b>1,237,348</b>          | <b>607,208</b> | <b>309,226</b> | <b>154,222</b>  | <b>11,582</b>       | <b>178</b>             |

\*Desegregated Population calculated from National Rate (Retrieved from BBS)

- Out of 733,506-hectare agriculture land, **17,760** Hectare crops are affected by the flood and previously affected by the April 2022 early flash flood.
- According to the Department of Livestock Services data on Sylhet Division, **167,817** cows, **8,717** buffalo, **43,478** goats, **20,379** sheep, **728,593** poultry, and **405,514** ducks were affected by the flood as of 30 May 2022.
- Death of 105 livestock animals (cattle) and **22,934** poultry in Sylhet division have been reported by DLS as of 30 May 2022.
- 10,071 acres pastureland has been damaged according to the DLS.
- The higher portion of the respondents of **Sunamganj and Sylhet** opined respectfully **40% - 60% of cropland** and **more than 60% of cropland** witnessed destruction due to flash flood. In near future it can eventually result in economic hardship for local farmers.
- The provision of Health and Nutrition services has been affected in Netrokona (**22%**), Shunamganj (**93%**), and Sylhet (**88%**). Disruption of important health & nutrition services for **under-5s, pregnant/lactating mothers, and caregivers** would worsen nutrition status. As most shelters don't have a special place for breastfeeding mothers, the sudden movement and shock, may reduce the number of mothers who breastfeed.



**Figure 4 MAP-Approximate Percentage of People Affected**

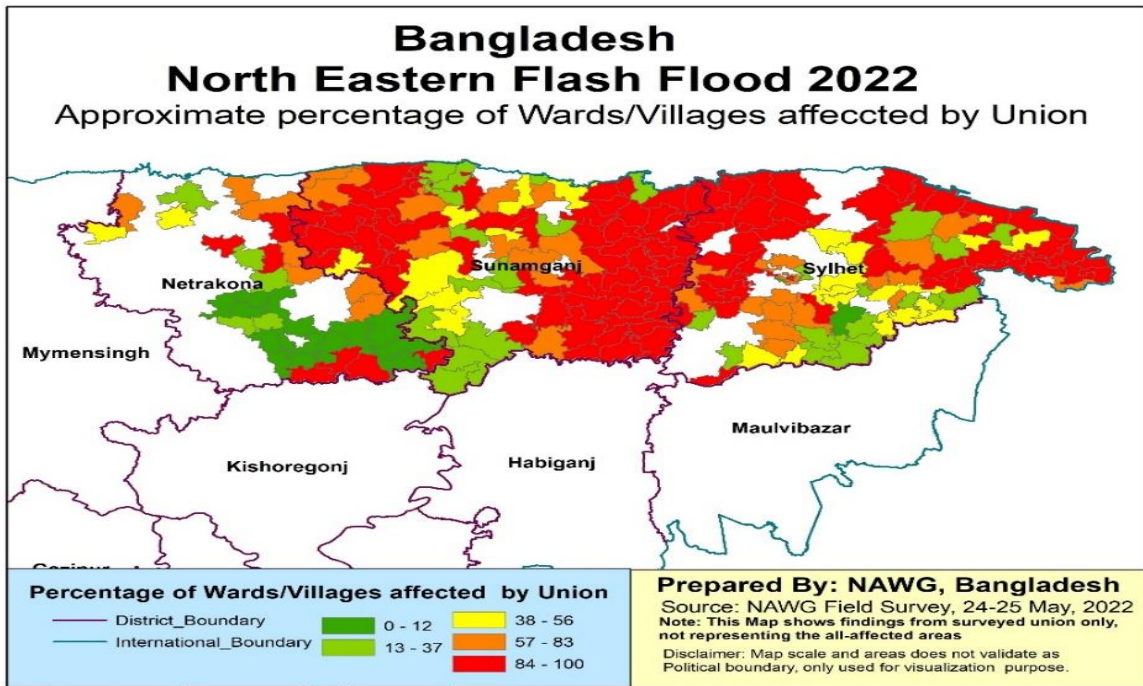


Figure 5 MAP-Approximate Percentage of Wards/Village Affected

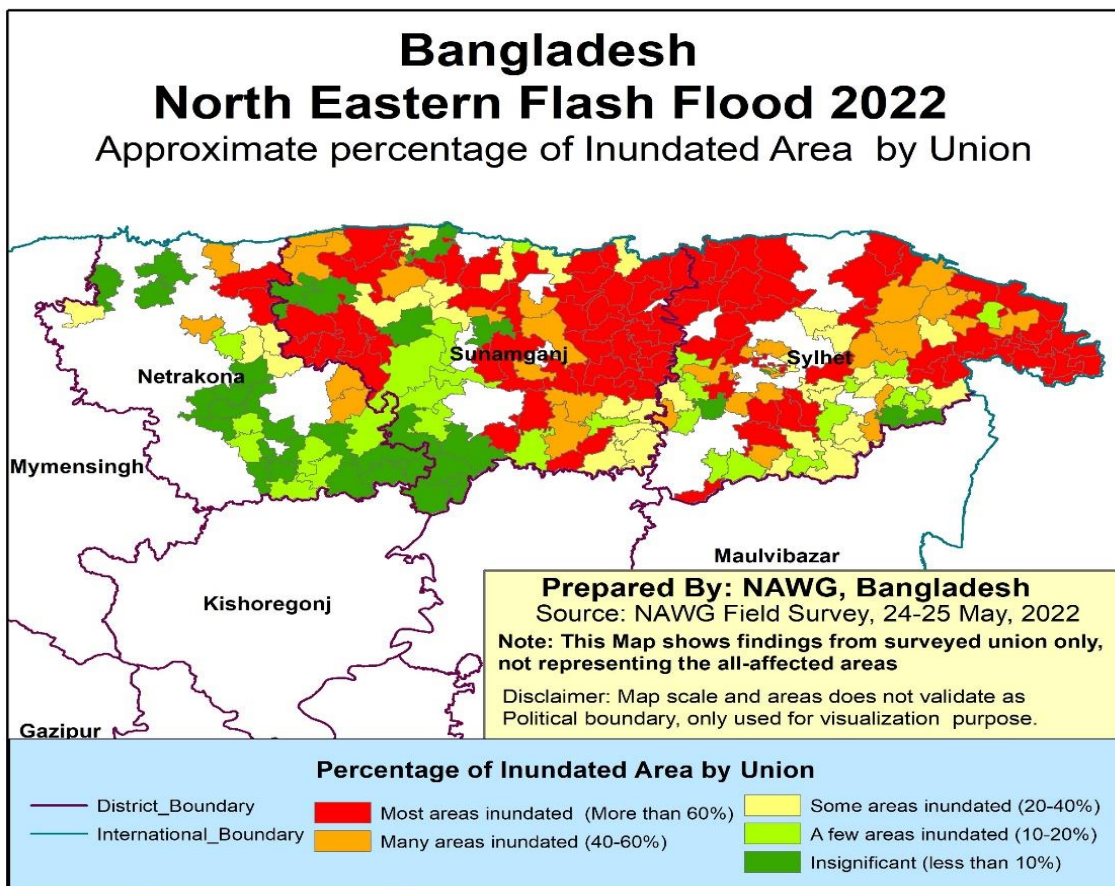


Figure 6 MAP-Approximate Percentage of Inundated Area by Union

## Disruption and sufferings

Mainly during post disaster phase community have to go through several distress and suffering that caused due to damage and different kind of disruption. This assessment covers community's disruption and suffering that they faced and will face due to recent flash flood in the North Eastern Bangladesh.

### Economic Disruption:

This Figure shows the Economic disruption of the affected community that caused due to recent by flash flood. Overall, in 93% of the union there is a disruption occurred related to cultivation of fisheries / poultry and livestock and this disruption it is prominent in all three affected districts. Livelihood and income generated activity also disrupted mostly in Sunamganj (96%) and Sylhet (96%) district due to this Flash flood.

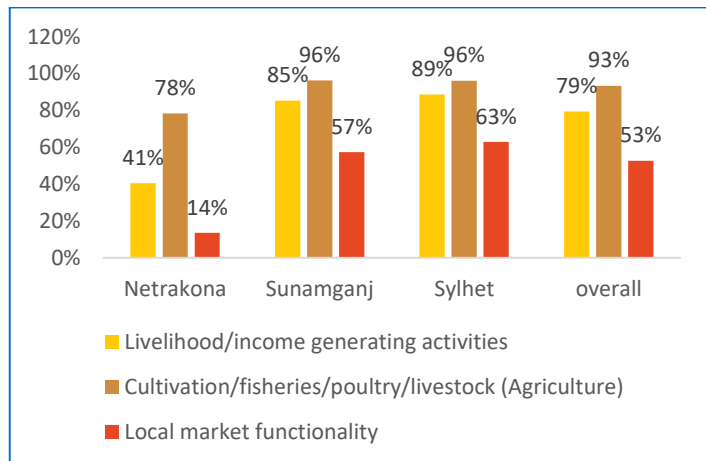


Figure 7 Economic Activity Disruption

### Social and Service provision disruption:

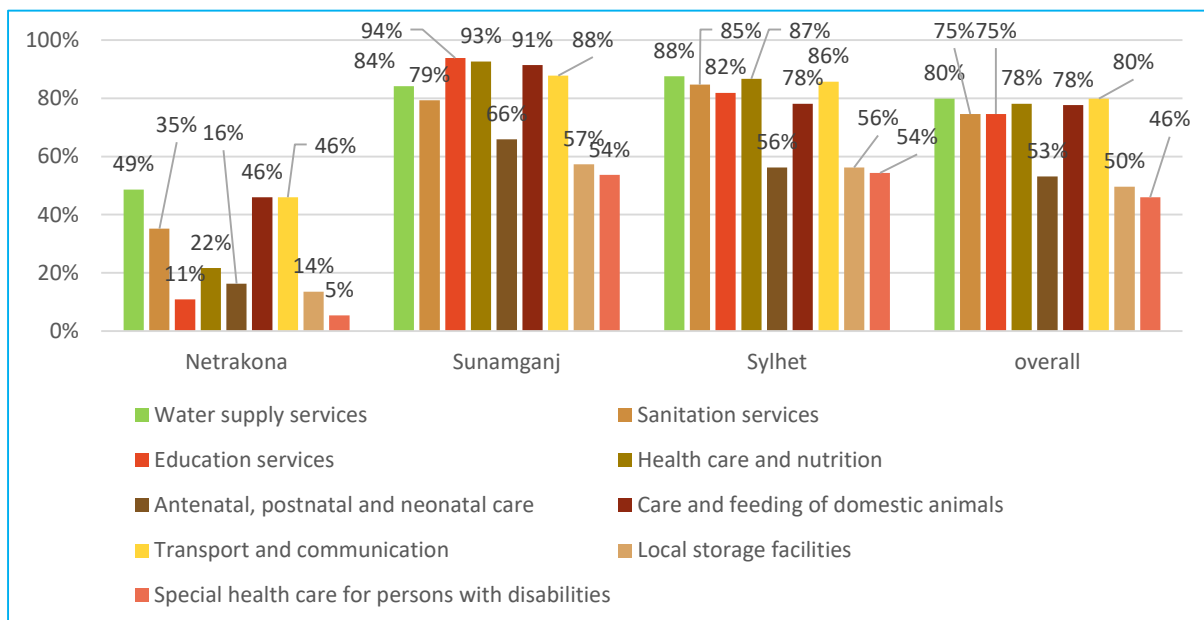


Figure 8 Service Provision Disruption

Above, figure shows the state of service provision disruption due to recent flash flood in the North Western Area of Bangladesh. Overall, in most union water supply and transportation/communication disrupted where sanitation service, Health and Nutrition as well care and feeding of domestic animals

also disrupted due to recent flash flood. In Sanamganj, special health care of disabilities as antenatal, postnatal and care, Education service disrupted. Beside that Water supply and transportation communication also disrupted alarmingly. In Sylhet Sanitation and Health care and Nutrition service disrupted mostly beside Education and water supplies.

Among several types of social service mainly Social Networking is highly affected as mainly people in the community stayed in home. On the other hand, recreation activities and various social festivals were disrupted to this flood. In both Sunamganj and Sylhet social networking is mostly disrupted among all kind of service disruption.

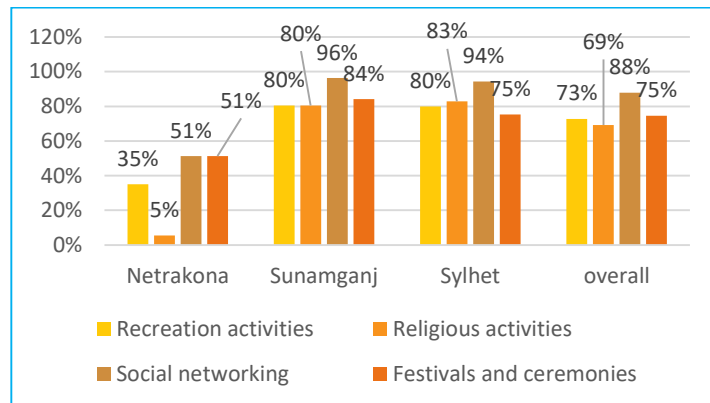


Figure 9 Social Service Disruption

### Physical Sufferings:

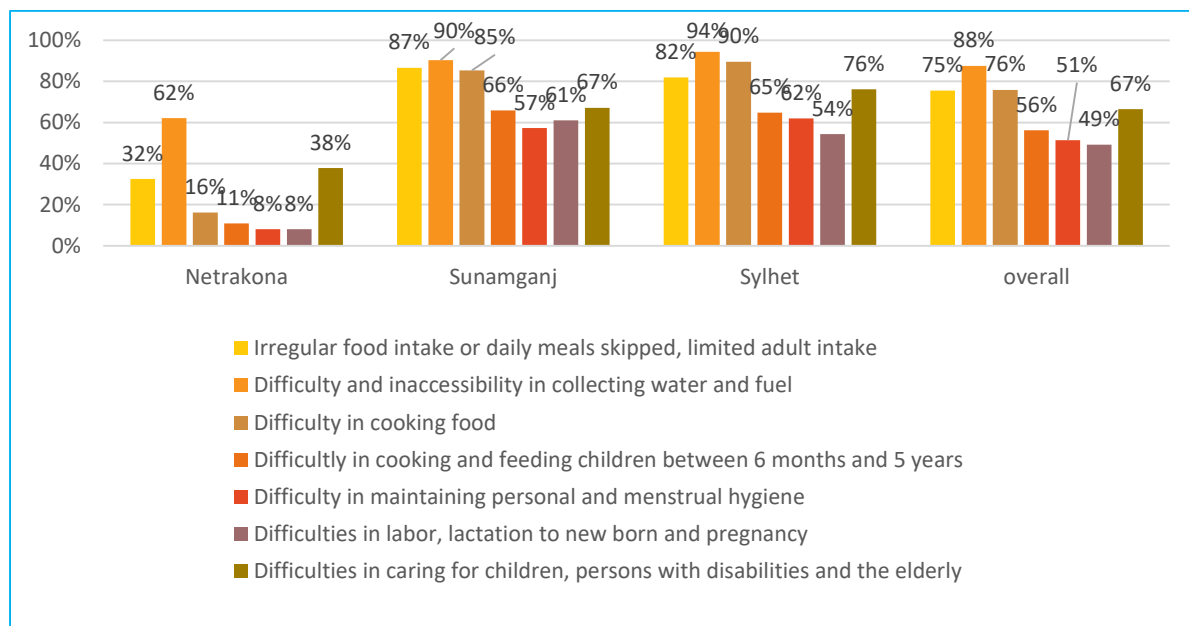


Figure 10 Physical Sufferings

In terms of sufferings mainly people of the affected area suffered to access water and fuel. Besides that, they also have difficulties to cook food. Suffering induced due irregular food intake also reported high. In three affected districts accessing fuel and water is the most prominent sufferings as of below figure. Point to be noted that, people also faced difficulties in terms of labor, lactation and pregnancy related complications.

Overall, difficulties in terms of cooking and feeding child below 5 years and taking care of children including old people and person with disability also reported alarmingly high in the affected areas and this scenario is common in the affected districts specially in Sylhet and Sunamganj.

## Mental Sufferings:

Fear of uncertainty is reported mostly as Mental health and Psycho-social distress overall and the situation is same in all the affected areas. Fear of early marriage/uncertainty future among adolescent girls is reported one of prior mental distress in Sunamganj. In Sylhet, among several mental distress anxiety about insecurity and privacy reported is prominent as because Sylhet city area is also highly impacted by this recent flood and this phenomenon is a common one in the affected area.

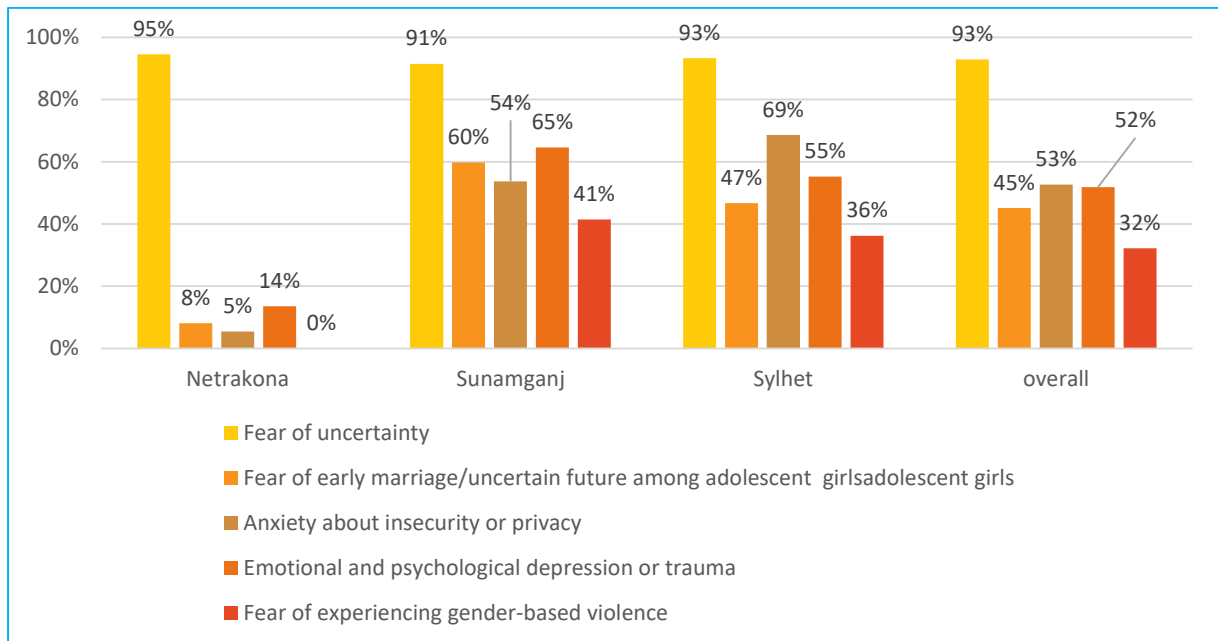


Figure 11 Mental Health and Psycho-social distress

## Social Sufferings:

People in the affected area mostly suffered from income loss due to income loss. Overall, they suffered for staying in others place and these issues raised prominently by in Sylhet as well in Sunamganj also. Taking loan and dependency on relief also cited as social suffering of community people in the affected area.

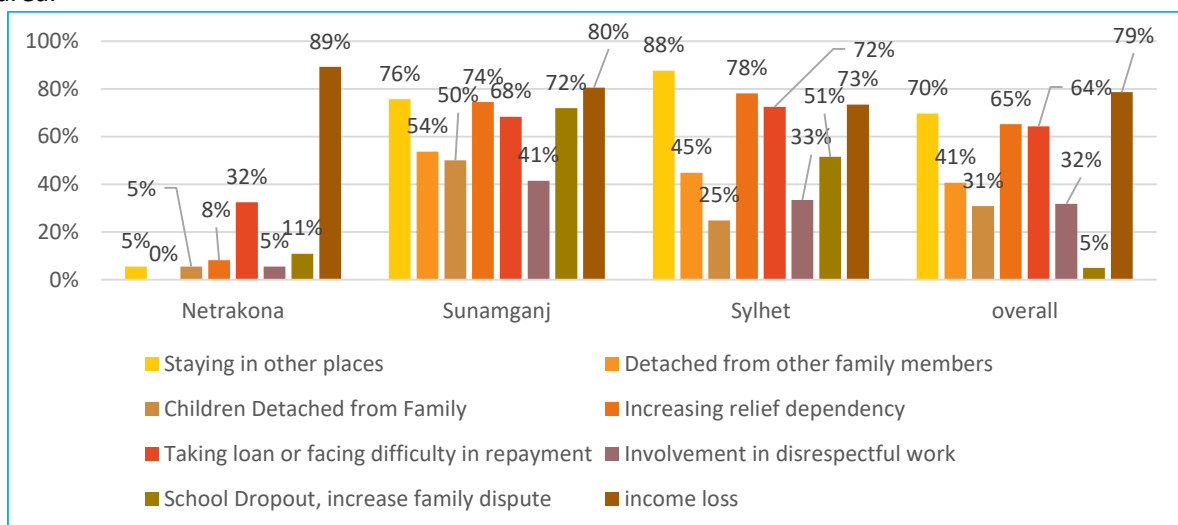


Figure 12 Social Sufferings

## Sectoral Analysis (Damage and Disruption, Distress, Needs and Priorities, Recommendations)

### Child Protection

#### Situation overview

Due to heavy rainfall in north-east part of both India and Bangladesh, several districts of north-eastern Bangladesh have been severely affected by flash floods. There are over 4 million people have been affected, among which 1.5 million are children. There are significant losses in livelihood, damage in water and sanitation facilities, disruption in services, roads and transport, as a result of this flash flood, will have disproportionate impacts on children in all age group from 0-18 years. Field evidence from Sunamganj and Sylhet indicates all physical, social, mental and psychosocial conditions will be negatively impacted among children and their family.

Overall, the families who lost their houses become displaced and struggling to manage minimum living space; are in need of emergency assistance with safety. Due to inundation, essential households' items have been damaged or washed away. Around 70% of the assessed union, affected people having difficulties to cook food and more than 50 % assessed unions highlighted concern regarding privacy of the affected people of whom 40% are children who are more vulnerable than adult and ended up with the victim of violence. There is electricity disruption in some of the affected areas, which resulting affected people to live in dark sometimes particularly at night which exposed adolescent girls to become more exposed to sexual abuse and exploitation.

In the affected area, there are reported cases of diarrhea, respiratory infection, and skin diseases and children are at risk of suffering. Also, there are reports of damaged houses in Sylhet and Sunamganj, and people lost their usual living as well as facing difficulties to ensure minimum living space with dignity, privacy, and protection. With these impacts, children have become more vulnerable in the wake of flood impact to violence including GBV, abuse, exploitation, and psychosocial distress.

According to the NAWG preliminary assessment, in Sylhet and Sunamganj, more children are being affected in this flood, compared to Netrokona, and it is associated with the intensity of flood.

**Table 2 Approximate percentage of the children (0-18) affected**

| Approximate percentage of the children (0-18) affected | Netrakona |             | Sunamganj |             | Sylhet     |             | Overall    |             |
|--|-----------|-------------|-----------|-------------|------------|-------------|------------|-------------|
|  | n         | %           | n         | %           | n          | %           | n          | %           |
| A few children (0-18) affected (10-20%)                | 1         | 3%          | 26        | 32%         | 29         | 28%         | 56         | 25%         |
| Insignificant (less than 10%)                          | 35        | 95%         | 26        | 32%         | 24         | 23%         | 85         | 38%         |
| Many children (0-18) affected (40-60%)                 |           | 0%          | 12        | 15%         | 6          | 6%          | 18         | 8%          |
| Most of them are affected (more than 60%)              | 1         | 3%          | 3         | 4%          | 12         | 11%         | 16         | 7%          |
| Some children (0-18) affected (20-40%)                 |           | 0%          | 15        | 18%         | 34         | 32%         | 49         | 22%         |
| <b>Total</b>   | <b>37</b> | <b>100%</b> | <b>82</b> | <b>100%</b> | <b>105</b> | <b>100%</b> | <b>224</b> | <b>100%</b> |

**Table 3 Approximate percentage of children detached from family**

| Approximate percentage of children detached from family | Netrakona   | Sunamganj   | Sylhet      |
|---|-------------|-------------|-------------|
| Most of the child detached (more than 60%)              | 0%          | 5%          | 3%          |
| Many children detached (40-60%)                         | 0%          | 5%          | 2%          |
| Some of children detached (20-40%)                      | 0%          | 7%          | 17%         |
| A few children detached (10-20%)                        | 3%          | 13%         | 16%         |
| Insignificant (less than 10%)                           | 97%         | 70%         | 62%         |
| <b>Total</b>  | <b>100%</b> | <b>100%</b> | <b>100%</b> |

### Key Needs & Priorities

Although the NAWG preliminary assessment showed that, an insignificant number of children got detached from their families, still there are children who got detached and need immediate support to reunite with their families. In addition, there should be development and delivery of key lifesaving Child Protection messaging across all CP partners to ensure the protection of the most vulnerable children and women as well as to prioritize the following:

- Close monitoring, documentation, tracing and reunification of children that are unaccompanied and/or separated
- Development and delivery of key immediate lifesaving Child Protection messaging across all partners to ensure the protection of the most vulnerable
- Increased case management and follow-up specifically focusing on referral to services and Mental Health and Psychosocial Support (MHPSS)

### Immediate recommendations (3-6 months)

1. Deploy social workers to identify and address risks and barriers that prevent children including CWD from accessing goods, services, spaces and information equally.
2. Increased rate of community awareness on child protection, Injury prevention (drowning, snake Bite, RTA etc), GBV, positive parenting, CHL etc.
3. Ensure re-unification and family support kits as assistance for the affected children and their family in order to prevent children from exploitation, abuse or school dropout.

### Medium/long term recommendations (beyond 6 months)

1. Identify and trace the children who are at risk including unaccompanied, separated, Orphan, Homeless and with disabilities through case management and provision of service referral for address risks.
2. Engage local capacities to address violence and exploitation; and support service providers, law enforcement actors, women's rights groups, communities and children to prevent violence, exploitation and abuse, including GBV.
3. Formation, Capacity Development and Mobilisation of Community based child protection committee (CBCPC), Coordination with Child Help Desk of Local Police Station, engage CWB and District CPiEWG, One Stop Crisis Center).
4. Integrate psychosocial support in child-friendly spaces and other protection responses for children and women, and coordinate with and refer to MHPSS in other sectors. (Child Friendly Spaces/ Mobile Child Friendly Spaces, Recreational Kits etc.)

Situation Overview

| Where are the displaced people mostly staying now? (Select one) | Netrakona   | Sunamganj   | Sylhet      |
|---|-------------|-------------|-------------|
| Educational institute   | 0%          | 17%         | 12%         |
| Govt. cyclone shelter/flood shelter                             | 0%          | 1%          | 14%         |
| Highland/Road/Embankment  | 0%          | 1%          | 1%          |
| Home (Own/With Relatives)                                       | 100%        | 79%         | 65%         |
| Neighbour House   | 0%          | 1%          | 7%          |
| Other   | 0%          | 0%          | 1%          |
| <b>Total</b>  | <b>100%</b> | <b>100%</b> | <b>100%</b> |

Table 4 Where displaced people staying now

Five districts of north-eastern Bangladesh – Sylhet, Sunamganj, Habiganj, Netrokona and Maulvibazar are affected by extensive flash flooding. Sylhet and Sunamganj have been most affected, with water flowing above dangerous levels. Over four million people of these districts are affected by the flood including over 1.5 million children. Over 67 unions of 13 upazilas are worst affected. About 1096 tube wells were damaged and 3875 sanitation facilities were damaged. Potable water has always been scarce in these regions. A significant number of affected populations are now without access to safe drinking water as inundation destroyed WASH infrastructure and contaminated water sources. Hand washing facilities are scarce, and as a result, maintaining safe hygiene practices and COVID 19 infection prevention and control is hampered. Overall, access to clean water, decent toilets and good hygiene has been seriously compromised which can be life threatening considering the current Pandemic situation in these regions.

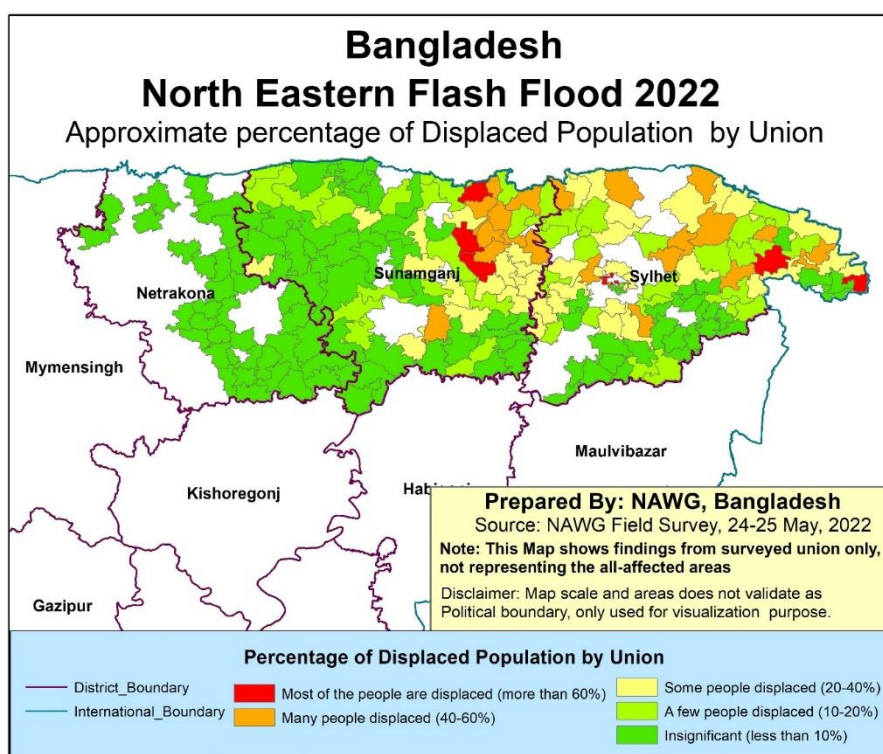


Figure 13 MAP - Approximate Percentage of Displaced Population

*Table 5 Damage and Distress (WASH indication situation of Displacement)*

| Disruption/Distress                                      | Netrakona |     | Sunamganj |     | Sylhet |     | overall |     |
|--|-----------|-----|-----------|-----|--------|-----|---------|-----|
|  | n         | %   | n         | %   | n      | %   | n       | %   |
| <b>WASH Service provision disruption</b>                 |           |     |           |     |        |     |         |     |
| Water supply services                                    | 18        | 49% | 69        | 84% | 92     | 88% | 179     | 80% |
| Sanitation services                                      | 13        | 35% | 65        | 79% | 89     | 85% | 167     | 75% |
| Difficulty in maintaining personal and menstrual hygiene | 3         | 8%  | 47        | 57% | 65     | 62% | 115     | 51% |
| <b>Total Case (Union)</b>                                | 37        |     | 82        |     | 105    |     | 224     |     |

### Key Needs & Priorities

Immediate needs are the immediate provision of safe drinking water supply, temporary emergency latrine facilities, the repair/ construction for the continuity of functionality of water facilities and the hygiene promotion and the provision of hygiene kits for prevention of other water borne diseases in the most affected and vulnerable areas and flood shelters. With in this flood situation and in order to limit the spread of COVID-19, hand washing with soap is the most important practice, so the availability of safe drinking water, hygienic sanitation facilities and hand washing materials are critical for the most disadvantaged people, mainly children, women, elderly people and those with disability who are the most vulnerable in the affected areas.

- Rehabilitation of water points, tube wells, rainwater harvesting systems and water treatment plants.
- Repair/construction of damaged latrines/new temporary latrines for the most vulnerable people, including those with disabilities and elderly people;
- WASH services and behavior change messages, especially in health care facilities and shelters is critical.
- Coordinating and monitoring community interventions in the most affected areas, as well as those with heightened numbers of COVID-19 cases (in coordination with the health cluster).

### Immediate recommendations (3-6 months)

- Identification of the worst affected areas and most vulnerable groups with age, gender disaggregated data (women, children, people with disabilities etc.) and inclusive critical WASH interventions planning.
- Renovation/rehabilitation and disinfection of tube wells and water points/sources;
- Repair/construction/ rehabilitation of sanitation facilities and support repair of latrines, renovation, construction for most disadvantaged groups.
- Hygiene promotion awareness sessions emphasizing handwashing with soap, frequently and during critical times along with use of latrines;
- Cash grants to meet WASH related needs of the communities over the next six months
- Coordination, monitoring and reporting of planned activities through community feedback mechanisms

### Medium/long term recommendations (beyond 6 months)

- Hygiene awareness campaign with the use of mikes and conducting hygiene education sessions while maintaining social distance.
- Community capacity building session on disaster and climate water safety plans
- Assessment of effectiveness of behavior change interventions

- Promote, support market-based solutions for engaging local entrepreneurs through incentives and subsidies
- Feedback mechanism
- Support adoption of disaster and climate resilient waster options

## Education

### Situation overview

Around two million people (about 40 per cent children) have been affected by the flood in Sylhet Division<sup>1</sup>. Over 750 educational institutions, mostly government primary schools, have been closed due to severe flooding in two districts, causing a loss of learning to the students<sup>2</sup>. 447 (234 girls) students were affected as 15 UNICEF-supported learning centres have been damaged as of 17<sup>th</sup> May 2022. According to the NAWG preliminary findings, Education services overall disrupted in three districts by 75% (Netrokona district 11%, Sunamganj district 94% and Sylhet district 82%) and school dropouts increased by 5% in three districts (11% in Netrokona district, Sunamganj 72% and Sylhet 51% respectively).



Table 6 Disruption/Distress (Education)

| Disruption/Distress                     | Netrokona |     | Sunamganj |     | Sylhet |     | Overall |     |
|---|-----------|-----|-----------|-----|--------|-----|---------|-----|
|   | n         | %   | n         | %   | n      | %   | n       | %   |
| Education services                      | 4         | 11% | 77        | 94% | 86     | 82% | 167     | 75% |
| School Dropout, increase family dispute | 4         | 11% | 59        | 72% | 54     | 51% | 11      | 5%  |

Moreover, in the most affected districts - Sylhet and Sunamganj, disruption in road and transport services will increase the dropout of rates and less attendance due to disruption on the way to/from the schools and education institutions.

During floods in Bangladesh, the education process is disrupted due to the following key supply-side barriers: 750 School buildings are damaged/inundated or used as flood shelters. NAWG findings revealed that overall 12% of education institutions are being used as shelter in 3 districts where more concentration was in Sunamganj district which is 17%. Furthermore, protection-related barriers like the safety of children on the way to and from schools because of the disrupted communication channels and access roads also remain critical. Demand-side economic and social and cultural barriers include negative coping mechanisms like child labour 6.8% (MICS 2019) or child marriage (15.5% before age 15 and before age 18 51.4 - MICS 2019) that vulnerable households apply when dealing with economic losses during disasters.

Global evidence suggests the longer the period for resuming the education process interrupted during emergencies and natural disasters, the higher risk of children dropping out of school. The reduced contact hours also contribute to the lower learning outcomes among students. With already alarming figures of out of school children in Bangladesh (more than 1 in 4 school-age children – some 6.2 million currently are out of school) and according to the education statistics 2019, competency loss on Subjects due to disaster and climate changes impact in Bangladesh of the students is categories in seven subjects such as; Bengali, English, Mathematics, Science, Social science, Religion and others. There are three measurement scales that were considered about subject loss, these are- students can make up at home, face massive problems and irrecoverable or permanent loss. The irrecoverable/permanent loss in subjects as, 20.76% in Bengali, 25.30% in English, 25.64% in Mathematics, 16.51%

in Science, 3.78% in Social science, 3.02% in Religion and 4.99% in other subjects. Therefore, the education should be given high and urgent priority in the current flood response.

### Key Needs & Priorities

The key immediate needs and priorities are spelt out as per NAWG preliminary report and government information.

- Provide immediate educational responses to the affected children through the establishment of safe, temporary learning centres/arrange alternative learning spaces and distribution of education (teaching and learning) kits.
- Provide drills or training for teachers and students in case of flash flood in Sylhet and Sunamganj
- Operationalize Standing Operation Procedure (SOP) for floods in Sylhet and Sunamganj
- Provide hygiene and cleaning materials to schools used as shelters
- Distribution of education kits and materials to the affected learners at home and in shelters
- Learning Continuity (LC): Provide education kits and materials to the affected learners at home and in shelters.
- Modelling resilient infrastructure—demonstrating schools which will not be flood-prone, such as elevated school design.
- Community/parent mobilization to support the operationalization of the Learning Centre.
- Coordination with WASH and Child Protection clusters on establishing adequate WASH and protection facilities (including MHPSS) in temporary learning/alternative learning centres
- 

### Immediate recommendations (3-6 months)

- Restore safe access to education for children in the flood-affected areas in schools/learning centres (distributing EiE kits, an alternative arrangement of classrooms and operation of remote learning options and minor repair works of the damaged classrooms/buildings).
- Prevent disaster linked school drop-out, especially among children from the vulnerable families
- Support evidence-based decision making for EiE block funds disbursement

### Medium/long term recommendations (beyond 6 months)

- Support education authorities with education preparedness plans;
- Support school infrastructure (including WASH, playground etc) repair works
- Improve school infrastructure damage assessment data collection and verification mechanisms
- Replenishment of furniture and fixture including WASH facilities

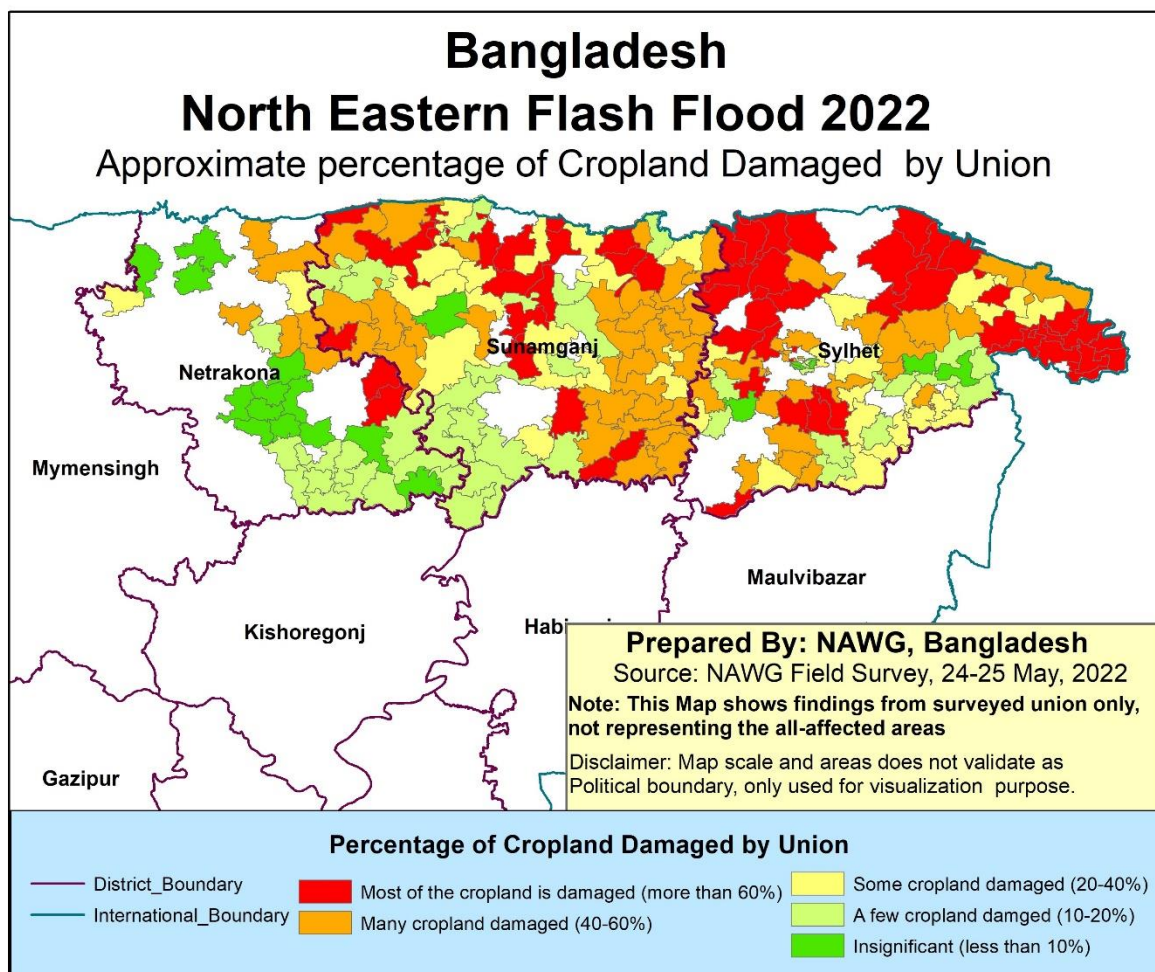
### Food Security and livelihoods

#### Situation overview

The flood left a very devastating situation for both the present time and long term. Most of these areas were affected by the April 2022 early flash flood and Sunamganj is an IPC level 4 district. Currently, it has impacted on the immediate need of food, household repairing, and income generating activities. But the bigger problem is most of the summer field crops, vegetable gardens and pond fishes of the northeast part of the Sylhet district have been damaged which will effect on the livelihood of the affected people and food security. People's coping capacity is already exhausted and started to adopt negative coping strategies like reduced meal, upfront sale of labour etc. Although the markets are still functional with price hikes and disruption due to flood. In this need analysis, the

biggest concern of the flood-affected communities is identified as food security followed by livelihood and shelter. In this flood, most of the crop lands were submerged for at least 5-7 days which damaged crops, livestock feed, houses, and infrastructures. People have lost their stored foods (rice, pulse, wheat etc.) that were washed away from their homes during the flood. Opportunities for income-generating activities have been very limited. Most of the mud and straw-made home is fully damaged. Many people are still living in the makeshifts, relative's homes or under the open sky with a dire need of ready to eat food. These might trigger a security breach in the affected areas and thus many are worried about their family member's safety and security (source: SCI). In addition to 5 districts, Nawgaon, Kustiya, Kurigram, Jessore, Jhainaidah, Chuadanga and Chapainawabgonj district's crops are also affected according to the Department of Agriculture extension. Based on secondary data, further analysis was conducted for these districts. According to MoFood, as of 26 May 2022 total food grain of amount 1215000 MT were available at govt storage and it is satisfactory compared to the last year's storage.

- According to Department of Agriculture Extension, 17,760 hectares of crop land have been damaged out of 733,506 hectares of available crop land as of 26 May 2022 from the flood affected 12 districts (more official data are coming). Major crops that have been affected most in these districts are Boro, Aush, Oil seed, summer vegetables, and fruits were of prime concern. So far 55,696 farmers have been affected in 4 districts out of 12 districts (more are coming).
- According to the Department of Livestock Services data on Sylhet Division, 167,817 cows, 8,717 buffalo, 43,478 goats, 20,379 sheep, 728,593 poultry, and 405,514 ducks were affected by the flood as of 30 May 2022.
- Death of 105 livestock animals (cattle) and 22,934 poultry in Sylhet division have been reported by DLS as of 30 May 2022.
- 10,071 acre pastureland has been damaged according to the DLS.
- 17,34 MT straw worth of BDT 8477500 have been damaged as reported by the DLS.
- 258 MT green fodder worth of BDT 1,290,000 have been damaged as reported by the DLS
- Total livestock damage is worth almost 1 crore BDT (more data are coming).
- According to SCI, local market functionalities have also been disrupted according to 94% of the respondents whereas only 16% of the respondents reported market access as an issue in the NWAG data.
- 100% of the respondents reported livestock care and feeding has been disrupted (SCI)
- 75% of respondents reported disruption of local storage facilities (SCI)
- According to the MoF, 8.33% price hike is reported for coarse rice compared to the last week.



**Figure 14 MAP-Approximate percentage of Crop land Damage**

#### Key Needs & Priorities

- Food security including current food needs and long-term assistance have been identified as the key priority in most of the assessment areas. As many of the summer crops of this harvesting year is damaged, people are more worried about food for the coming days (SCI).
- people have no work and money to rebuild their damaged houses, buy seeds and fertilizers for agriculture, and feed the livestock.

#### Immediate recommendations (3-6 months)

- Food assistance (cash/kind/cash & kind) until the agriculture system restored, as it is an identified gap already.
- Cooked meal is preferred to address the minimum dietary diversity. It may be supplemented by other ready to eat food.
- Targeted supplementary feeding program for vulnerable group.
- Livestock services, cattle/poultry feed, vaccination, medicine and veterinary service.
- Agricultural inputs Seeds, Seedbed fertilizer for restoring agriculture.
- Support and agricultural input to grow homestead vegetable

## Medium/long term recommendations (beyond 6 months)

- Need of skill development for climate resilient agriculture, livestock, poultry and fisheries.
- Community livestock shelter resilient to flood, reconstruction and afforestation works for the disrupted embankments in affected areas through Cash for Work in timely manner.
- Both on farm and off farm Livelihood restoration program is required.
- Income generating activities for the people affected by the flood.
- Linkage with market

## Gender Based Violence (GBV)

### Situation overview

The overall loss in livelihood, damage in water and sanitation facilities, disruption in services, roads and transport, as a result of the northeastern flood, will have disproportionate impacts on women, girls and other vulnerable groups. Field evidence from Sunamganj and Sylhet indicates all physical, social, mental, and psychosocial conditions will be negatively impacted. Often such situations lead to negative coping mechanisms, exacerbates the unequal gender roles within households and further expands the gender divide and discrimination. For example, the increase in irregularity in food intake, difficulty in cooking food, collecting water, and taking care of elderly, children, and persons with disability – all these conditions are largely of the women and girls in the household.

Around 36.2% respondents in Sylhet view gender-based violence as a potential cause of mental distress among the affected population, and the response rate for the same is around 41.5% in Sunamganj. 59.8% and 46.7% respondents in Sunamganj and Sylhet respectively viewed the impact of flood on households will drive the causes of early marriage in families.

In the most affected districts - Sylhet and Sunamganj, disruption in road and transport services will further limit mobility of women, and girls to access critical reproductive health services and particularly for pregnant women to access maternal health services. Although NAWG assessment indicate affected pregnant women may be less, the ANC (antenatal care) rate particularly poor in Sunamganj and Sylhet - 29.6 and 39.7 percent respectively. Further information is needed to evaluate the situation.

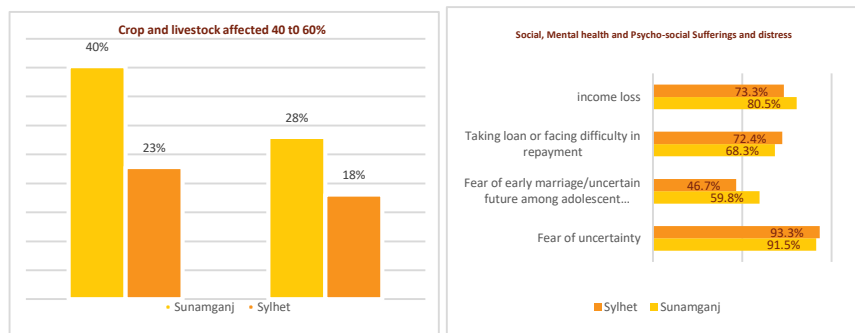


Figure 16 % of respondents indicating “Damage to Cropland and livestock” and “Social, mental and psychosocial sufferings distress”

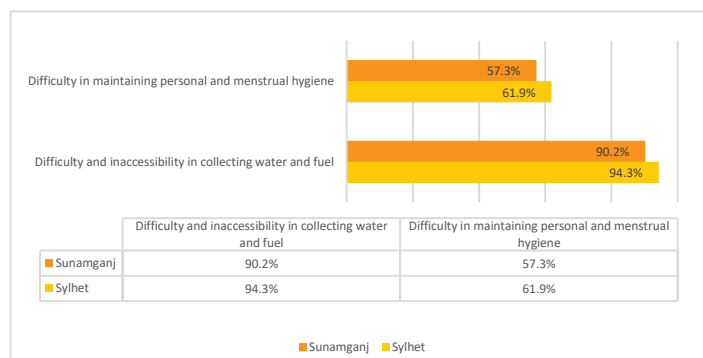


Figure 15 % of respondents indicating possibility of Physical sufferings as a result of Flash Flood in Sunamganj and Sylhet

During this time menstruating women and girls are compelled to take up unhygienic and unhealthy practices due to absence or inaccessible toilets; women must take up additional household chores for collecting drinking water. Affected unions in Sylhet district being the most impacted in terms of water supply and sanitation services according to the NAWG assessment respondents.

Data from Netrokona highlights - difficulty in accessing and collecting water, income loss and difficulties in repayment of loan or accessing loan and fear of uncertainty - as the main impacts. Additionally, women representatives highlight irregular food intake, difficulties in caring for children, persons with disabilities and the elderly, difficulty in cooking and feeding children and uncertain future of adolescent girls.

### Key Needs & Priorities

The NAWG Preliminary assessment brings out key immediate needs of the affected community. From those - food and drinking water, toilet repair, hygiene promotion, menstrual hygiene management, bathing facility for women and girls, household items, income, and employment - must be gender, protection and inclusion integrated.

Delivery of essential items and/or services to targeted vulnerable groups:

- Distribution of dignity kits customized to meet the needs and reduce GBV risks of women, girls, and third gender individuals and other vulnerable groups, including persons with disabilities.
- Distribution of menstrual health/hygiene management kits to women, adolescent girls, including to particularly to persons with disabilities to meet menstruation needs and raise awareness on sexual and reproductive health issues.
- Cash support to women-headed households, pregnant women, households with persons with disabilities for them to access essential health services including reproductive and maternal health, GBV referral including psychosocial support
- Equip certain health facilities with kits to provide clinical management of rape (CMR) treatment to survivors of GBV

### Immediate recommendations (3-6 months)

- Further analysis is required to understand how and which coping mechanisms adopted by the communities are reducing GBV risks.
- Immediate capacity building of front line non-GBV actors (PIO/DDRO, field officials, CPP/FPP and other community volunteers including adolescents and youth) on how to establish or ensure GBV referral mechanism is in place during emergency, respond to survivors in absence of GBV services and extend psychosocial first aid (PFA)
- Case management of GBV survivors through facilities (e.g., Women friendly Space, integration in Family Welfare Center's) including psychosocial support (PSS)/psychosocial first aid (PFA) and effective GBV referral.

### Medium/long term recommendations (beyond 6 months)

- Safety and security measures in the flood shelters for women, girls and children, including well maintained and separate WASH facilities.
- Ensuring accessibility for people with disabilities to the flood shelters is critical.
- Developing a well equipped, gender, protection and inclusion sensitive front-line work force (including PIO/DDRO, field officials, CPP/FPP and other community volunteers including adolescents and youth).
- Restoration of alternative livelihood to empower vulnerable women against Intimate Partner Violence.

### Situation overview

Loss and damage of livelihood and income generating activities, disruption on services of water, sanitation, education, health, nutrition, antenatal, postnatal, neonatal care and transport, as a result of the northeastern flood, will have disproportionate impacts on women, girls, other gender groups. Field evidence from Sunamganj and Sylhet indicates disruption of water collection which means additional pressure on women and girls, who are traditionally primarily responsible for drinking water collection. It might increase their workload and burden of care work. Disruption of sanitation make life of women worse, especially in case of pregnant women, since they need extra support with regards reproductive health. Given the societal norms, and conservativeness, women would not usually use public toilets once back to their abode. Neither would they defecate in broad day light in open space, and wait for the darkness to set in. In the absence of freshwater, adolescent girls cannot maintain hygienic reproductive health care. This would give rise to perinea rashes and urinary tract infections.

86.6% and 81.9 % in Sunamganj and Sylhet respectively views irregularity in food intake within household which means women and girls would possibly opt for negative coping mechanism first. Field evidence from Sunamganj and Sylhet indicates all physical, social, mental, and psychosocial conditions will be negatively impacted. Often such situations lead to negative coping mechanisms, exacerbates the unequal gender roles within households and further expands the gender divide and discrimination. For example, difficulty in cooking food, taking care of elderly, children, and persons with disability – all these conditions are largely of the women and girls in the household.

Moderate to severe damage of livestock and fisheries production has been reported; initial estimate shows BDT 74.52 million of loss in livestock (dead livestock and loss of animal feed). COVID had already forced people to sale household assets, in which assets of women like chicken, goats, jewelry were first to go; with flood, people are set to lose maximum household assets.

Communication system has been heavily damaged and therefore disrupted, which is an alert for maternal and child health care especially for the newborn babies. Due to disrupted communication women and babies who might need medical attention will not have access to health facilities. Disruption of road and transport services will further limit mobility of women, and girls to access to other services; for example, education of girl child might be discontinued. Restricted mobility might substantially reduce women's access to market, support services resulting in extremely limited livelihood options for women can increase their dependency on loan and other negative coping mechanisms.

There has not been any reporting of GBV cases during the flood. But 36.2% respondents in Sylhet view gender-based violence as a potential cause of mental distress among the affected population, and the response rate for the same is around 41.5% in Sunamganj. 59.8% and 46.7% respondents in Sunamganj and Sylhet respectively viewed the impact of flood on households will drive the causes of early marriage in families.

Due to lack of adequate Sex, Age, and Disability Disaggregated Data (SADDD) the aspects of women, girls and gender diverse population are not identified and analyzed properly. Most of the data and the information related to flood affected people are generalized that do not reflect the different impacts on livelihood and income for men and women.

### Key Needs & Priorities

The NAWG rapid assessment brings out key immediate needs of the affected community. From those - food and drinking water, toilet repair, hygiene promotion, menstrual hygiene management, bathing facility for women and girls, household items, income and employment - must be gender, protection and inclusion integrated.

- Repairing or installation of the HH level latrines; special attention to be given to FHHs.
- Maternal health care especially for the pregnant and lactating mothers, along with special care for newborn babies.
- Supplementary feeding and drinking water support for pregnant and lactating mothers.
- Cash support to women-headed households to ensure their food intake and restore their livelihood and income generating activities.
- Cash support to household with pregnant women, lactating mothers, persons with disabilities to ensure equitable access to essential health services including reproductive and maternal health, GBV referral including psychosocial support
- Ensure safety and security for women, adolescent girls and children in shelters and places where people are still living by engaging security forces and volunteers like Ansar, VDP as well as engaging women led CSOs for creating awareness on safety, and to ensure GBV and child protection services.

### Immediate recommendations (3-6 months)

- Collection of SADD and addressing specific needs of different group of people into the response plan and strategy should be incorporated.
- Meet the food security and nutritional requirement by providing essential food packages particularly to pregnant and lactating mothers, children, and the elderly.
- Emergency Multi-Purpose Cash Grant for female headed households, pregnant women, lactating mothers, persons with disabilities and other most vulnerable groups such as gender diverse groups to protect them from negative coping strategies and exploitation and to ensure equitable access to essential health services.
- Ensure women's access to agricultural inputs, especially vegetable seeds and fertilizers restoring their livelihoods and nutritional status of their families.
- Engage more women into Cash for work schemes to repair breached embankments and essential community infrastructures
- Ensure Sexual and Reproductive Health services for pregnant women and ante-natal and prenatal care services along with special care for newborn babies.
- Ensure adequate safety, security and protection measures for women, adolescent girls, women with disability and other gender diverse people through activation of GBV prevention committee such as Nari O Shishu Nirjatn Protirodh Committees (women and children oppression prevention committee) and engaging women led CSOs for creating awareness on safety, and to ensure GBV and child protection services.
- Access to mental health and psychosocial services for women, girls and children needs to be enhanced.

### Medium/long term recommendations (beyond 6 months)

- Cash grants and interest free or low interest loan for women and FHHs for livelihoods like poultry, cattle rearing.
- Interest free loans to FHHs and low-interest loans to other women who run small and microenterprises.
- Support to run women friendly market distribution system, supply chain and value chain system.
- Health care facilities need to have enough health care workers (HCW) and midwives to provide 24/7 services, as well as medical supplies and equipment to provide treatment and care to patients with SRH and emergency obstetric conditions

- Mobilize community volunteers and leaders (combined with youth, Ansar/VDP, village police, women led CSOs/CBOs, youth led organizations and others) with adequate information, education, and communication (IEC) materials to raise awareness of safety and security of women, girls and other gender groups, ethnics minorities and women and girls with disabilities at shelter and community
- Ensure adequate safety, security and protection measures for women, adolescent girls, women with disability and other gender diverse people in emergency flood shelters and temporary/makeshift shelters to protect them from any form of GBV as well as retrieving dignity and reducing their vulnerability.
- Extend and establish, where necessary, safe spaces for women and girls in coordination with local disaster management committees.

## Health including SRHR

### Situation overview

- In last 9 days (18 -26 May 2022), National Health Emergency Operations Centre (HEOC) and Control Room recorded a total of 469 Cases (349 from Acute Watery Diarrhoea, 32 from Skin Diseases, 14 from ARI, 10 from Lightning, 09 near to drowning and 55 from others)
- Communicable diseases (e.g. Diarrhea, ARI and Skin diseases) are likely to be triggered when flood water will be receding.
- 263 Mobile Medical Teams (MMTs) are working to tackle health problems (140 medical teams in Sylhet and 123 in Sunamganj)
- Pre-positioned Emergency Drugs are being used to manage health problems
- Some people may suffer from mental health problems and psychosocial illness as well as reproductive and sexual health problem.

**Table 7 Approximate percentage of the affected pregnant women/lactating mother**

| Approximate percentage of the affected pregnant women/lactating mother  | Netrakona | Sunamganj | Sylhet |
|---|-----------|-----------|--------|
| 1. Most of the pregnant women/lactating mother affected (more than 60%) | 0%        | 7%        | 11%    |
| 2. Many pregnant women/lactating mother affected (40-60%)               | 0%        | 9%        | 6%     |
| 3. A few pregnant women/lactating mother affected (10-20%)              | 0%        | 13%       | 28%    |
| 4. Some pregnant women/lactating mother affected (20-40%)               | 3%        | 16%       | 11%    |
| 5. Insignificant (less than 10%)  | 97%       | 55%       | 44%    |
| <b>Total</b>  | 100%      | 100%      | 100%   |

### Key Needs & Priorities

- Enhance Surveillance system and health education programme to prevent communicable disease outbreak
- Alert Rapid Response Teams (RRTs) to investigate impending disease outbreak

### Immediate recommendations (3-6 months)

- Replenish emergency drugs and medical supplies
- Health care services in affected communities to manage health problems
- Disease surveillance and health education & promotion for early detection and prevention of communicable disease.
- Mental health and psychosocial support, Reproductive and sexual health support

### Medium/long term recommendations (beyond 6 months)

- Renovate damaged health facilities if any

## Government and Non-Government Responses

- 263 Mobile Medical Teams (MMTs) are working to tackle health problems (140 medical teams in Sylhet and 123 in Sunamganj)
- WHO field staff, Divisional Coordinator (DC) and Surveillance and Immunization Medical Officer (SIMO) providing support to Divisional Director (Health) and Civil Surgeon Office in disease surveillance and coordination without hampering their normal immunization activities
- WHO, as a health cluster lead agency and other partner agencies closely monitoring the public health situation with National HEOC and Control Room of DGHS and sending more emergency drugs to replenish emergency medical buffer stock.

## Nutrition

### Situation overview

- Health and Nutrition service provision has disrupted in Netrokona (22%), Shunamganj (93%) and Sylhet (87%). Disruption of essential health & nutrition services for children under five years of age, pregnant and lactating women (PLW) and care givers will result in the deterioration of nutrition status, particularly wasting. The caseload of severe acute malnutrition (SAM) may increase. As per MICS 2019, wasting rate of Sylhet (11%), Netrokona (11.1%) and Sunamganj (7.6%). Sylhet and Netrokona have higher rate of wasting than the national average (9.8%).
- Due to displacement, it is assuming that children aged between 6 months and 59 months' food intake are irregular and inappropriate. The feeding practices among infants and young children aged 6-23 months will be particularly affected. As per Situation report, while dry foods and cooked foods (e.g. Khichuri/ Hotchpotch etc) are getting distributed in the affected locations, the amount of the relief foods getting distributed are not meeting the actual needs as mentioned by the people living in the shelter centers of city corporation areas. It is therefore presumed; frequency and dietary diversity of children 6-23 months of age is compromised which could lead to increased undernutrition among children. Pre-flash flood dietary diversity was already sub-optimal at 23.6% in Sylhet division and 23.7% in Mymensingh division (MICS 2019).
- Breastfeeding rate may decrease due to displacement and shock. In most of the shelter centers there are no designated place for the lactating mothers. The pre-flash flood breastfeeding practice was also sub-optimal. For example, median duration of Exclusive breastfeeding found to be 3.8 months in Sylhet and 3.0 months in Mymensingh division.
- Nutrient intake among young children and pregnant and lactating women will be affected due reduced meal frequency and dietary diversity, both are the results of the affected livelihood including disruption of income generation, price hiking of regular food items and reduce purchasing power.
- Water and sanitation sources damaged which might increase the incidence of diarrhea amongst young children (due to use of unsafe water) resulting in increased undernutrition and child mortality. As per the latest reports of DPHE (Dated 21 May 2022), a number of 476 tube well in Sylhet and 620 tube well in Sunamganj got damaged in this weeklong flood. Report from Divisional Director, Health (Dated 27 May 2022) says, 46 persons suffered from diarrhea in this flood period.

## Key Needs & Priorities

- Restoration and increase the frequencies of Infant and Young Child Feeding counselling and maternal nutrition counselling
- Activate the mechanism and system to monitor BMS code violation
- Provision of micronutrient supplements for PLW and maternal nutrition counselling to improve nutritional status and food diversity
- Provision of Zinc Supplementation to children suffering from diarrhea
- Strengthen management and service coverage of acute malnutrition through case management for SAM
- Creating opportunity to community screening of SAM and proper treatment plan for identified SAM and MAM cases
- Support appropriate nutrition and health service delivery for PLW and children.

## Immediate recommendations (3-6 months)

- Disaggregated Data and information (by sex, age and disability) on children and mothers (Pregnant and Lactating women- PLW) to be available from the very first day of the emergency, more specifically those who take shelter in the flood centers
- IYCF counselling to protect BMS violation and prevent wasting (SAM and MAM) deterioration
- Messages distribution on IYCF and the danger of BMS
- SAM and MAM screening and referral for children aged 6-59 months
- Improve case management of SAM in the district and upazila hospitals
- Replenish the emergency Nutrition supplies (Therapeutic food) in the district and upazila hospitals
- Micronutrient supplementation specially Zinc to children suffering from Diarrhea
- Micronutrient supplementation to PLW

## Medium/long term recommendations (beyond 6 months)

- Capacity strengthening for service provider on SAM management and Nutrition in Emergency (NIE)
- Capacity strengthening for health service providers at Community Clinics and FWC, Union Health Centers for SAM screening, referral, IYCF counseling and maternal nutrition
- Enhance the capacity of health service providers to collect immediate real-life data on the children and mothers (PLW) living in the flood affected communities, flood shelter centers and displaced.
- Conduct emergency response plan for Sylhet, Shunamganj and Netrokona.

## Shelter

### Situation overview

Houses are fully or partially damaged due to the current flash food in Haor; particularly in Sunamganj & Sylhet districts. Since most of the areas in Sylhet and Sunamganj inundated, and several people have displaced. People, whose houses were damaged and destroyed, have lost their usual living space, and facing difficulties to ensure minimum living space with dignity, privacy, and protection from weather event. According to the NAWG preliminary assessment, it is reported that in total 13 % of assessed unions, most of the houses (*more than 60%*) in the respective unions have been damaged either fully or partially. It is also reported that in 21% of assessed unions, many houses (*between 40% to 60%*) have been impacted due to flash flood. In Netrokona, out of total 37 assessed unions, 30 unions (*81 % of assessed unions in Netrokona district*) have reported insignificant impact on houses.

There is no official damage information issued by government yet.

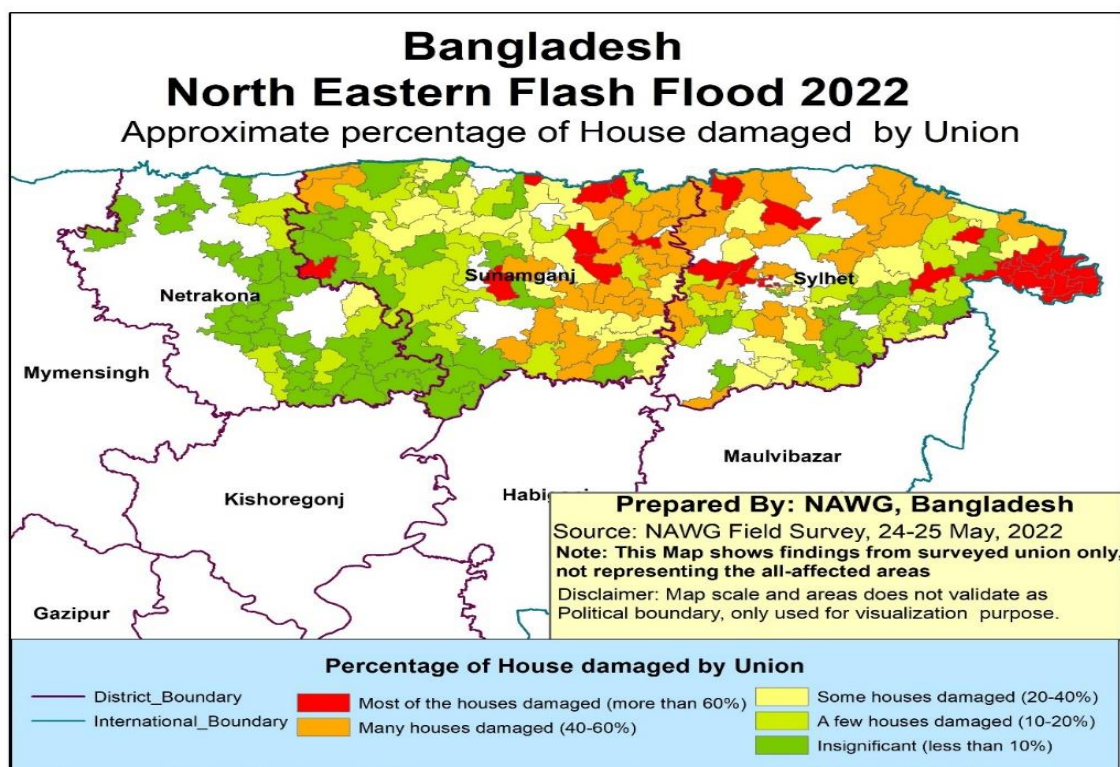


Figure 17 MAP-Approximate percentage of HH damage

### Key Needs & Priorities

According to the NAWG preliminary assessment, the key needs are repairing and maintenance of damaged houses. On the other hand, who lost their houses (*fully damaged or destroyed*), become displaced and struggling to manage minimum living space; need emergency and recovery shelter assistance. Due to inundation, essential households' items have been damaged or washed away. According to the analysis, around 70% of the assessed union, affected people having difficulties to cook food and more than 50 % assessed unions highlighted concern regarding privacy of the affected people. There is electricity disruption in some of the affected areas, which resulting affected people to live in dark sometimes particularly at night. The Preliminary assessment also reported the needs of essential household items.

Based on the preliminary priority analysis, it is found that in 11 assessed unions (*out of 224 union*), the need of repairing and maintenance support for shelter is identified as priority need. Similarly, 4 unions identified shelter need as second priority and 12 unions as third priority need.

### Immediate recommendations (3-6 months)

To meet the emergency shelter needs following are the immediate recommendations

- Provide emergency shelter assistance consists of tarpaulin, toolkit, and construction materials along with technical support to build makeshift shelter. Provide essential household items considering individual household needs and following the shelter cluster guidelines.
- Providing support to families being hosted by friends, family or neighbors as well as providing support to the families that host them in terms of cash and essential household items.

- Provide technical and financial support to repair the damage houses considering the build back better approach.

### Medium/long term recommendations (beyond 6 months)

To meet the medium/longer-term shelter needs following are the recommendation based on Bangladesh shelter cluster standards and guidelines:

- Providing transitional shelter or core housing support as recovery assistance for those families who lost their entire houses.
- It is also recommended to ensure community participation and ownership of the affected people through implementing community driven approach.
- Advocacy with concern authorities to support the landless/affected families

## WASH

### Situation overview

Five districts of north-eastern Bangladesh – Sylhet, Sunamganj, Habiganj, Netrokona and Maulvibazar are affected by extensive flash flooding. Sylhet and Sunamganj have been most affected, with water flowing above dangerous levels. Over four million people of these districts are affected by the flood including over 1.5 million children. Over 67 unions of 13 upazilas are worst affected. About 1096 tube wells were damaged and 3875 sanitation facilities were damaged. Potable water has always been scarce in these regions. A significant number of affected populations are now without access to safe drinking water as inundation destroyed WASH infrastructure and contaminated water sources. Hand washing facilities are scarce, and as a result, maintaining safe hygiene practices and COVID 19 infection prevention and control is hampered. Overall, access to clean water, decent toilets and good hygiene has been seriously compromised which can be life threatening considering the current Pandemic situation in these regions.

Table 8 Disruption/Distress (WASH)

| Disruption/Distress                                      | Netrakona |     | Sunamganj |     | Sylhet |     | overall |     |
|--|-----------|-----|-----------|-----|--------|-----|---------|-----|
|  | n         | %   | n         | %   | n      | %   | n       | %   |
| <b>WASH Service provision disruption</b>                 |           |     |           |     |        |     |         |     |
| Water supply services                                    | 18        | 49% | 69        | 84% | 92     | 88% | 179     | 80% |
| Sanitation services                                      | 13        | 35% | 65        | 79% | 89     | 85% | 167     | 75% |
| Difficulty in maintaining personal and menstrual hygiene | 3         | 8%  | 47        | 57% | 65     | 62% | 115     | 51% |
| <b>Total Case (Union)</b>                                | 37        |     | 82        |     | 105    |     | 224     |     |

### Key Needs & Priorities

Immediate needs are the immediate provision of safe drinking water supply, temporary emergency latrine facilities, the repair/ construction for the continuity of functionality of water facilities and the hygiene promotion and the provision of hygiene kits for prevention of other water borne diseases in the most affected and vulnerable areas and flood shelters. Within this flood situation and in order to limit the spread of COVID-19, hand washing with soap is the most important practice, so the availability of safe drinking water, hygienic sanitation facilities and hand washing materials are critical for the most disadvantaged people, mainly children, women, elderly people and those with disability who are the most vulnerable in the affected areas.

- Rehabilitation of water points, tube wells, rainwater harvesting systems and water treatment plants.

- Repair/construction of damaged latrines/new temporary latrines for the most vulnerable people, including those with disabilities and elderly people;
- WASH services and behavior change messages, especially in health care facilities and shelters is critical.
- Coordinating and monitoring community interventions in the most affected areas, as well as those with heightened numbers of COVID-19 cases (in coordination with the health cluster).

#### Immediate recommendations (3-6 months)

- Identification of the worst affected areas and most vulnerable groups with age, gender disaggregated data (women, children, people with disabilities etc.) and inclusive critical WASH interventions planning.
- Renovation/rehabilitation and disinfection of tube wells and water points/sources;
- Repair/construction/ rehabilitation of sanitation facilities and support repair of latrines, renovation, construction for most disadvantaged groups.
- Hygiene promotion awareness sessions emphasizing handwashing with soap, frequently and during critical times along with use of latrines;
- Cash grants to meet WASH related needs of the communities over the next six months
- Coordination, monitoring and reporting of planned activities through community feedback mechanisms

#### Main recommendations (Early recovery/Recovery)

- Hygiene awareness campaign with the use of mikes and conducting hygiene education sessions while maintaining social distance.
- Community capacity building session on disaster and climate water safety plans
- Assessment of effectiveness of behavior change interventions
- Promote, support market-based solutions for engaging local entrepreneurs through incentives and subsidies
- Feedback mechanism
- Support adoption of disaster and climate resilient waster options

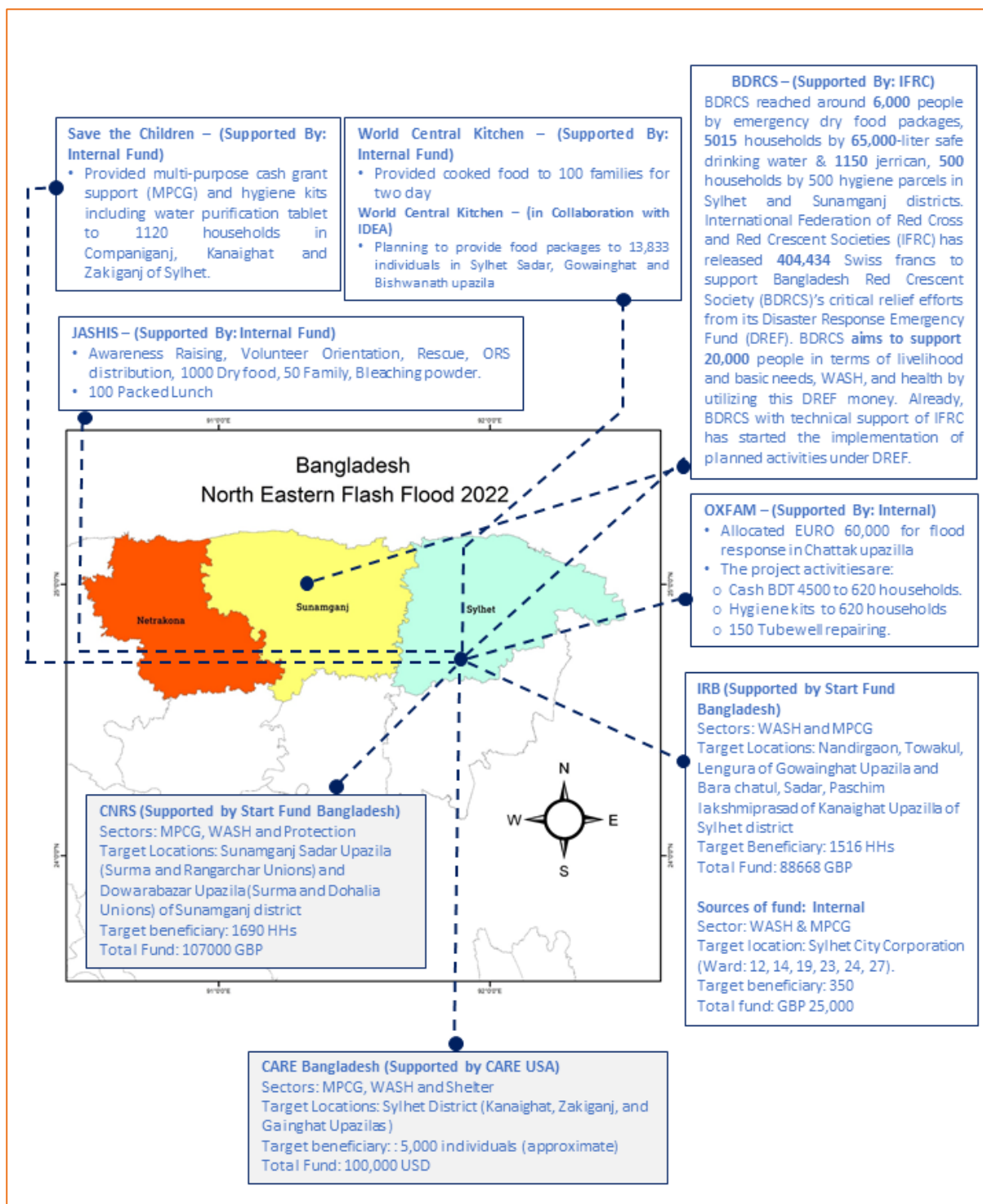
## Government and Non-Government Response

- DLS response to this flood was to vaccinate 17,591 cattle and 22,244 poultry. Additionally, 8,488 cattle and 31,918 poultry were treated.
- The government has immediately responded with Tk 5 lac for each Upazila, 1000 packet for dry food, (the value of each packet BDT 2,100) and distributed 500,000 water purifying tablets (WPT). As of 23 May 2022, Sylhet district administration has distributed 551 MT rice, 11800 packages of dry food, and cash support of BDT 1500,000.
- According to Ministry of Food, 1,215,000 MT food grain is available in Govt. storages as of 26 May 2022 and it is satisfactory compared to the last year.
- Department of Agriculture Extension is planning for a BDT 880 million recovery program for resorting the agricultural loss.
- In Sunamganj, Government ( as of 30 May 2022) allocated 80,000 Metric Ton rice, BDT 407,500G.R. Cash and 56 flood shelter also have been prepared. In Sylhet 326 Flood shelter have been prepared where 7439 people are staying in 95 shelters as of May 19, 2022 as of latest report (30 May, 2022) only 20 people were staying in shelter which was 5146 on May 24, 2022 Besides, 199 flood shelters have been equipped with WAH facilities and DPHE of Sylhet raised 35 tube well and disinfected another 31 damaged tube wells.

**Table 9 Government Response as of May 30,2022(source-ERC, DDM)**

| Relief Item                             | Sylhet    |             | Sunamganj |             | Habiganj  |             | Total     |             |
|---|-----------|-------------|-----------|-------------|-----------|-------------|-----------|-------------|
|   | Allocated | Distributed | Allocated | Distributed | Allocated | Distributed | Allocated | Distributed |
| GR Rice (in Metric ton)                 | 400,000   | 400,000     | 80,000    | 80,000      | 300,630   | 1,500       | 780,630   | 481,500     |
| GR Cash (In BDT)                        | 2,500,000 | 1,955,000   |           |             | 407,500   | 30,000      | 2,907,500 | 1,985,000   |
| Dry Food (Packet)                       | 12,000    | 11,818      |           |             |           |             | 12,000    | 11,818      |
| Money for Purchasing Fodder (in BDT)    |           |             |           |             |           |             | -         | -           |
| Money for Baby Food (in BDT)            |           |             |           |             |           |             | -         | -           |
| Money For Shelter Construction (In BDT) |           |             |           |             |           |             | -         | -           |
| Iron Sheet (In Bundle)                  |           |             |           |             |           |             | -         | -           |

**Figure 18 MAP-Non-Government Response**



**Table 10 Non Government Response**

| Name of Organization                                 | Response Area (District)                                      | Amount of Fund Allocated | Sector/Item               | Total Beneficiary (HH/Individuals) | Source of Fund (Donor) |
|--|---|--------------------------|---------------------------|------------------------------------|------------------------|
| Save the Children                                    | Sylhet (Companiganj, Kanaighat and Zakiganj)                  | -                        | MPCG, WASH and Shelter    | 1120 HH                            | Internal Fund          |
| World Central Kitchen                                | Sylhet  | -                        | FSL (cooked food)         | 100 HH                             | -                      |
| World Central Kitchen – (in Collaboration with IDEA) | Sylhet (Sadar, Gowainghat and Bishwanath)                     | -                        | FSL (food packages)       | 13,833 individuals                 | -                      |
| BDRCS  | <i>Sylhet, Sunamganj</i>                                      | 404,434 Swiss Franc      | FSL, WASH, Health         | 26,000 individuals and 5515 HH     | IFRC                   |
| OXFAM  | Sunamganj   | 60,000 EURO              | WASH and MPCG             | 620 HH                             | Internal Fund          |
| IRB  | Sylhet (Gowainghat, Kanaighat)                                | 88,668 GBP               | WASH and MPCG             | 1516 HHs                           | Start Fund Bangladesh  |
| CNRS   | Sunamganj (Sadar, Dowerabazar)                                | 107,000 GBP              | MPCG, WASH and Protection | 1690 HHs                           | Start Fund Bangladesh  |
| CARE Bangladesh                                      | Sylhet District (Kanaighat, Zakiganj, and Gainghat Upazilas ) | 100,000 USD              | MPCG, WASH and Shelter    | 5,000 individuals                  | CARE USA               |

**Affected Community Needs: Immediate Needs**

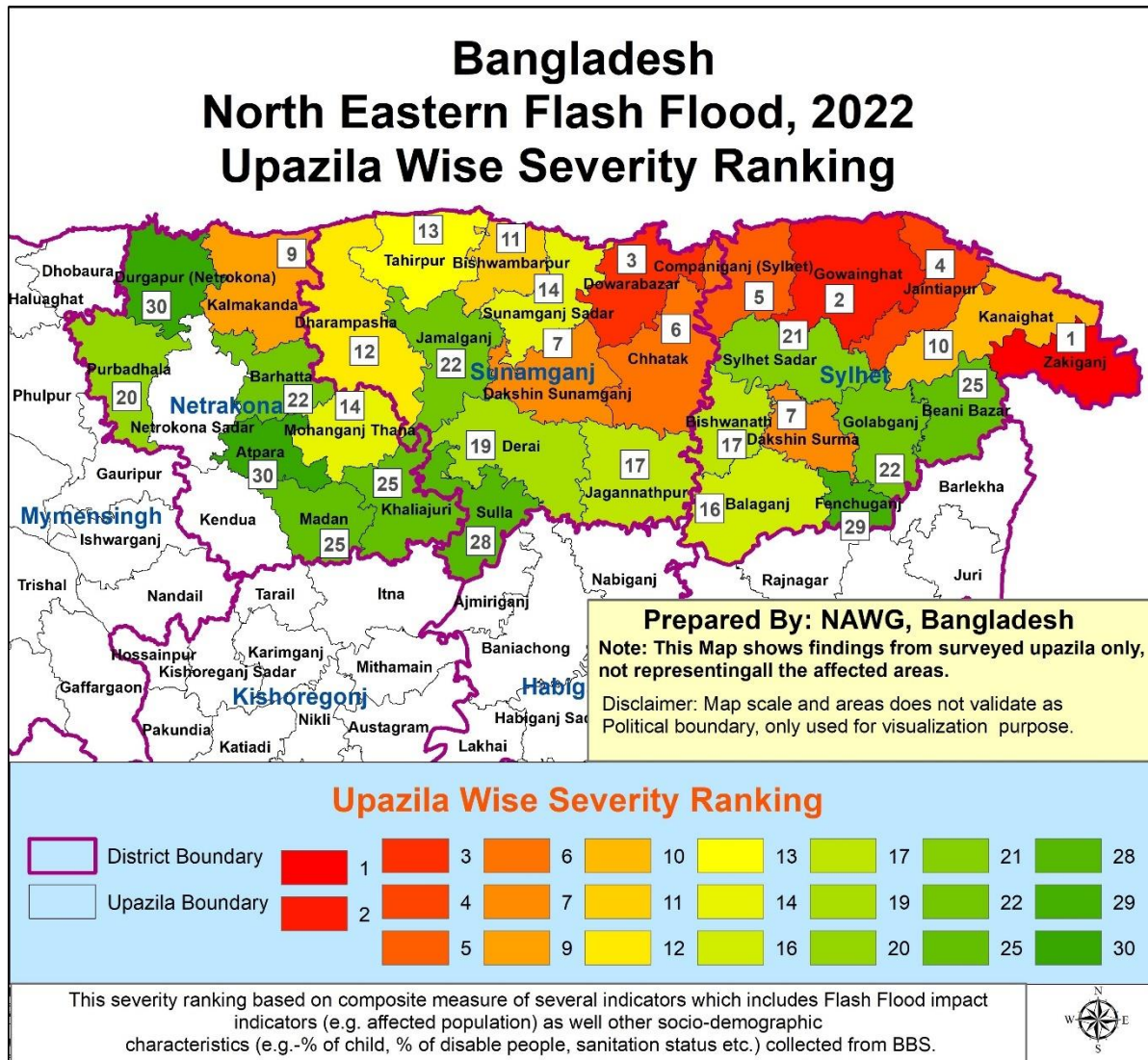
**Table 11 Affected Community Needs**

| Sector | Key Immediate Needs                                      | 1st Choice | 2nd Choice | 3rd Choice | 4th Choice | 5th Choice | Total Composite Value | % Of KIN from Weightage |
|--------|--|------------|------------|------------|------------|------------|-----------------------|-------------------------|
| WASH   | Drinking water Supply                                    | 77         | 24         | 13         | 4          | 4          | 95.09                 | 42%                     |
| WASH   | Toilet repair/temporary /accessible toilet               | 18         | 27         | 47         | 18         | 3          | 52.11                 | 23%                     |
| WASH   | Drinking water sources repair/disinfect                  | 14         | 61         | 14         | 5          | 7          | 51.77                 | 23%                     |
| WASH   | Hygiene promotion  | 4          | 8          | 21         | 37         | 8          | 25.78                 | 12%                     |
| WASH   | Drainage and solid waste management                      | 3          | 8          | 10         | 10         | 17         | 16.2                  | 7%                      |
| WASH   | Toilet repair/temporary latrine and water point          | 3          | 4          | 7          | 7          | 18         | 12.66                 | 6%                      |
| WASH   | Access to WASH NFIs (aqua tab, ORS, water container etc) | 1          | 3          | 4          | 10         | 11         | 8.52                  | 4%                      |

| Sector    | Key Immediate Needs   | 1st Choice | 2nd Choice | 3rd Choice | 4th Choice | 5th Choice | Total Composite Value | % Of KIN from Weightage |
|-----------|---|------------|------------|------------|------------|------------|-----------------------|-------------------------|
| WASH      | Separate toilet for women, girls  | -          | 2          | -          | 1          | 2          | 1.65                  | 1%                      |
| WASH      | Bathing facilities for women and adolescent girls   | -          | -          | 3          | 1          | -          | 1.24                  | 1%                      |
| FSL       | Food package (Rice, lentils, oil etc)   | 66         | 21         | 23         | 10         | 11         | 88.79                 | 40%                     |
| FSL       | Dry Food Package  | 5          | 40         | 7          | 13         | 6          | 31.76                 | 14%                     |
| FSL       | Income and employment   | 10         | 7          | 20         | 20         | 18         | 28.7                  | 13%                     |
| FSL       | Livestock assistances /Livestock/Poultry feed   | 5          | 4          | 3          | 18         | 25         | 17.49                 | 8%                      |
| FSL       | Food package for children below 2 years and pregnant and lactating women  | -          | 1          | 22         | 11         | 8          | 12.11                 | 5%                      |
| FSL       | Handwashing facilities  | 1          | -          | 2          | 4          | 6          | 3.86                  | 2%                      |
| FSL       | Support of complementary food package for children  | -          | -          | 3          | 4          | 9          | 3.79                  | 2%                      |
| FSL       | Emergency cooked Food   | 2          | 1          | 1          | 2          | 1          | 3.53                  | 2%                      |
| FSL       | Capacity of storing crops   | 2          | 3          | -          | -          | -          | 3.5                   | 2%                      |
| Shelter   | Repair and maintenance of shelter   | 11         | 4          | 12         | 15         | 19         | 24.51                 | 11%                     |
| Shelter   | Strengthening security and provisions of basic services in the emergency shelters, particularly for women, girls and children | -          | -          | -          | 1          | 3          | 0.85                  | 0%                      |
| Shelter   | Emergency shelter   | -          | -          | -          | 2          | -          | 0.5                   | 0%                      |
| Health    | Menstrual hygiene materials   | -          | 1          | 4          | 18         | -          | 6.32                  | 3%                      |
| Health    | Emergency health services (medical team and drugs)  | 1          | 1          | 1          | 4          | 11         | 5.03                  | 2%                      |
| Health    | Psychosocial/mental health support  | -          | -          | -          | 1          | 1          | 0.45                  | 0%                      |
| Health    | Antenatal and neonatal health services  | -          | -          | -          | 1          | -          | 0.25                  | 0%                      |
| Health    | Accessible and special health services for persons with disabilities  | -          | -          | -          | -          | 1          | 0.2                   | 0%                      |
| Health    | Reproductive health services  | -          | -          | -          | -          | 1          | 0.2                   | 0%                      |
| Education | Teaching learning materials   | -          | -          | 3          | 1          | 3          | 1.84                  | 1%                      |
| Education | Repair classrooms and school infrastructure   | -          | 1          | 1          | 2          | 1          | 1.53                  | 1%                      |
| Education | Alternative learning arrangements/Temporary learning space  | -          | 1          | -          | -          | 1          | 0.7                   | 0%                      |
| NFI       | Household items   | -          | 2          | 1          | 1          | 3          | 2.18                  | 1%                      |
| MPCG      | Financial Aids  | 1          | -          | -          | 2          | 22         | 5.9                   | 3%                      |

The above table shows the immediate needs of affected community. The needs ranked by the response from union level and then provide weightage each choice. As per findings the community needed WASH support immediately then Food Security related supports.

## Geographic Priorities



**Figure 19 MAP: Geographic Severity Ranking**

## Annexes

### Annex 01: Acknowledgement-1 (Advisory Panel/Core Analysis Team)

| Advisory Panel  |                          |
|---|--------------------------|
| Director, MIM- Department of Disaster Management (DDM)                  | Netai Chandra Dey Sarker |
| NAWG (Co-chair), Director, Humanitarian and Resilience, CARE Bangladesh | Kaiser Rejve             |
| UN (UNRCO): Humanitarian Affairs Specialist                             | Kazi Shahidur Rahman     |
| National GRAPH officer, UNDRR   | Md. Jafar Iqbal          |

| Role                                | Agency/Sector/WG                            | Name                         |
|-------------------------------------|---|------------------------------|
| Assessment Coordinator              | Coordinator NAWG, CARE Bangladesh           | Md. Fuad Ur Rabbi            |
| Secondary and Primary Data Analysis | WFP, VAM                                    | Mohammad Mahabubul Alam      |
|                                     | WFP, VAM                                    | Kaniz Fatema                 |
|                                     | TC-IM, NAWG, CARE Bangladesh                | H.M. Shahid Hassan           |
|                                     | Analyst, NAWG, CARE Bangladesh              | Mahir Tazwar                 |
| Review and Contribution             | Displacement Management Cluster Coordinator | Anthony Sequeira             |
|                                     | Nutrition Cluster Coordinator               | Asfia Azim                   |
|                                     | IOM, Displacement Management Cluster        | Atandra Abrar Ahmed          |
|                                     | UNICEF                                      | Esenbek Turusbekov           |
|                                     | Oxfam                                       | Fadrick Suvro Nath           |
|                                     | Gender in Humanitarian Cluster Coordinator  | Farhana Hafiz                |
|                                     | FAO - FSC                                   | Imtiaz Ahmed                 |
|                                     | WFP - FSC                                   | Iqbal Hossain                |
|                                     | Education Cluster Coordinator               | Jacklin Rebeiro              |
|                                     | Muslim Aid                                  | Khondker Abdul Kader Razu    |
|                                     | Save the Children                           | Towhidul Tarafder            |
|                                     | FSC cluster Coordinator                     | Mohammad Mainul Hossain Rony |
|                                     | IFRC  | Mohammad Sharif Khan         |
|                                     | CP Cluster Coordinator                      | Morshed Bilal Khan           |
|                                     | Islamic Relief                              | Moyen Uddin Ahmmed           |
|                                     | Sr. PC, CARE Bangladesh                     | Mrityunjoy Das               |
|                                     | WASH Cluster Coordinator                    | Mst. Saleha Khatun           |
|                                     | Health Cluster Coordinator                  | Muhammad RAHIM (Zahid)       |
|                                     | United Purpose                              | Mahamud Minar                |
|                                     | FAO - FSC                                   | Naznin                       |
|                                     | UNICEF, Nutrition Cluster                   | Ruhul Amin                   |
|                                     | UNFPA (Gender integration)                  | Rumana Khan                  |
|                                     | DT, CARE Bangladesh                         | Sumaiya Binta Ferdous        |
| FAO - FSC                           | Shamsun Naima                               |                              |
| United Purpose                      | Shekh Mohi Uddin                            |                              |
| UNICEF                              | Tatsuji Shinohara                           |                              |

## Annex 02: Acknowledgement-2 (Field Assessment Team)

| District   | Upazila           | Lead Organization         | Name of focal person                    | Contact Number   | E-mail of the focal person  |
|------------|-------------------|---------------------------|---|--|---|
| Netrakona  | Atpara            | Dhaka Ahsania Mission     | Md.Rashidul Islam                       | 01868567543  | <a href="mailto:bdrashed56@gmail.com">bdrashed56@gmail.com</a>  |
|            | Barhatta          | Dhaka Ahsania Mission     | Md.Main Uddin Emon                      | 01628480178  | <a href="mailto:km619138@gmail.com">km619138@gmail.com</a>  |
|            | Durgapur          | Dhaka Ahsania Mission     | ABM Shahab Uddin                        | 01824667440  | <a href="mailto:abmshahabuddin58@gmail.com">abmshahabuddin58@gmail.com</a>  |
|            | Kalmakanda        |                           |   |  |   |
|            | Khaliajuri        | Islamic Relief Bangladesh | Dr. Kamrul Islam                        | 01777741985  | <a href="mailto:Kamrul.Islam@islamicrelief-bd.org">Kamrul.Islam@islamicrelief-bd.org</a>  |
|            |                   |                           |   | 017777741987   | <a href="mailto:Mustak.Ahmed@islamicrelief-bd.org">Mustak.Ahmed@islamicrelief-bd.org</a>  |
|            | Madan             | Islamic Relief Bangladesh | Nur-E-Sikta                             | 01777741973  | <a href="mailto:Nur.Shekta@islamicrelief-bd.org">Nur.Shekta@islamicrelief-bd.org</a>  |
|            | Mohanganj         | BRAC                      | Jahidul Ahsan                           | 01738707468  | <a href="mailto:jahidul.ahsan@brac.net">jahidul.ahsan@brac.net</a>  |
| Purbadhala | Nizhum Sangma     | Program Officer           | 01755621634                             |  |   |
| Sunamganj  | Bishwambarpur     | ERA- OXFAM                | Md. Serajul Islam & Fadrick Suvro Nath. | 01716-114514<br>01755-649556   | <a href="mailto:era.haor.org@gmail.com">era.haor.org@gmail.com</a> & <a href="mailto:fnath@oxfam.org.uk">fnath@oxfam.org.uk</a> |
|            | Chhatak           | United Purpose            | Md. Jahidul Islam                       | 01811860880  | <a href="mailto:jahidul.islam@united-purpose.org">jahidul.islam@united-purpose.org</a>  |
|            |                   | BRAC                      | Jahidul Ahsan                           | 01738707468  | <a href="mailto:jahidul.ahsan@brac.net">jahidul.ahsan@brac.net</a>  |
|            |                   | IDEA                      | Sanjoy Kishor Sarkar                    | 01731289039  | <a href="mailto:cds.idea20@gmail.com">cds.idea20@gmail.com</a>  |
|            | Dakshin sunamganj | IDEA                      | Samiul Kabir                            | 01712645705  | <a href="mailto:shamuyel1985@gmail.com">shamuyel1985@gmail.com</a>  |
|            | Derai             | BRAC                      | Jahidul Ahsan                           | 01738707468  | <a href="mailto:jahidul.ahsan@brac.net">jahidul.ahsan@brac.net</a>  |
|            |                   | IDEA                      | Konkon Kanti Das                        | 01737481463  | <a href="mailto:kongkon1990@gmail.com">kongkon1990@gmail.com</a>  |
|            |                   | Islamic Relief Bangladesh | Fahad Talukder                          | 01777773833  | <a href="mailto:Fahad.Talukder@islamicrelief-bd.org">Fahad.Talukder@islamicrelief-bd.org</a>                                    |
|            | Dharampasha       | World Vision Bangladesh   | Sagor John Costa                        | 01755593730  | <a href="mailto:sagor_john_costa@wvi.org">sagor_john_costa@wvi.org</a>  |
|            | Dowarabazar       | IDEA                      | Sanjoy Kishor Sarkar                    | 01731289039  | <a href="mailto:cds.idea20@gmail.com">cds.idea20@gmail.com</a>  |
|            | Jagannathpur      | IDEA                      | Jahid Ahmed                             | 01712211702  |   |
| Jamalganj  | United Purpose    | Md. Jahidul Islam         | 01811860880                             | <a href="mailto:jahidul.islam@united-purpose.org">jahidul.islam@united-purpose.org</a> |   |

| District | Upazila         | Lead Organization       | Name of focal person      | Contact Number | E-mail of the focal person   |
|----------|-----------------|-------------------------|---------------------------|----------------|--|
|          | Sulla           | BRAC                    | Jahidul Ahsan             | 01738707468    | <a href="mailto:jahidul.ahsan@brac.net">jahidul.ahsan@brac.net</a>                     |
|          |                 | IDEA                    | Konkon Kanti Das          | 01737481463    | <a href="mailto:kongkon1990@gmail.com">kongkon1990@gmail.com</a>                       |
|          | Sunamganj sadar | BDRCS                   | Ms. Konika Talukdar       | 01732447782    | <a href="mailto:sunamganj@bdracs.org">sunamganj@bdracs.org</a>                         |
|          |                 | World Vision Bangladesh | Stip T Chisim             | 01713257105    | <a href="mailto:stipchisim@wvi.org">stipchisim@wvi.org</a>                             |
|          | Tahirpur        | BRAC                    | Jahidul Ahsan             | 01738707468    | <a href="mailto:jahidul.ahsan@brac.net">jahidul.ahsan@brac.net</a>                     |
|          |                 | World Vision Bangladesh | Bibhudan Biswas           | 01730700137    | <a href="mailto:Bibhudan_Biswas@wvi.org">Bibhudan_Biswas@wvi.org</a>                   |
| Sylhet   | Balaganj        | IDEA                    | Nazim Ahmed               | 01627912697    | <a href="mailto:na_eco@yahoo.com">na_eco@yahoo.com</a>                                 |
|          | Beani bazar     | IDEA                    | Jubayer Ahmed             | 01711385512    | <a href="mailto:jubayerahmed@gmail.com">jubayerahmed@gmail.com</a>                     |
|          |                 | BRAC                    | Jahidul Ahsan             | 01738707468    | <a href="mailto:jahidul.ahsan@brac.net">jahidul.ahsan@brac.net</a>                     |
|          | Bishwanath      | IDEA                    | Tamanna Ahmed             | 01759491314    | <a href="mailto:ideaawraib@gmail.com">ideaawraib@gmail.com</a>                         |
|          | Companiganj     | FIVDB                   | Dayem Al Rahman Chowdhury | 01612-211499   | <a href="mailto:cdayeem@gmail.com">cdayeem@gmail.com</a>                               |
|          |                 | Save the Children       | Biswajit Roy, Sr. Manager | 01716200948    | <a href="mailto:biswojit.roy@savethechildren.org">biswojit.roy@savethechildren.org</a> |
|          | Dakshin surma   | JASHIS                  | Md.Shahmud Jahan          | 01712325153    | <a href="mailto:shamudlavlu1980@gmail.com">shamudlavlu1980@gmail.com</a>               |
|          |                 | IDEA                    | Sammy Haque               | 01681343467    | <a href="mailto:ymmas.samz@gmail.com">ymmas.samz@gmail.com</a>                         |
|          | Fenchuganj      | JASHIS                  | Jewel Hossain             | 01779844410    | <a href="mailto:hossainjewel009@gmail.com">hossainjewel009@gmail.com</a>               |
|          |                 | IDEA                    | Sammy Haque               | 01681343467    | <a href="mailto:ymmas.samz@gmail.com">ymmas.samz@gmail.com</a>                         |
|          | Golabganj       | JASHIS                  | Nayeem Hussain            | 01758983341    | <a href="mailto:jashis1997@gmail.com">jashis1997@gmail.com</a>                         |
|          |                 | IDEA                    | Sudipta Chowdhury         | 01721963535    | <a href="mailto:ideapeace2020@gmail.com">ideapeace2020@gmail.com</a>                   |
|          | Gowainghat      | IDEA                    | Abul Kalam Azad           | 01717594825    | <a href="mailto:kalam.azad7@gmail.com">kalam.azad7@gmail.com</a>                       |
|          |                 | World Vision Bangladesh | Sebastine Areng           | 01730700133    | <a href="mailto:sebastineareng@wvi.org">sebastineareng@wvi.org</a>                     |
|          | Jaintiapur      | JASHIS                  | Alomgir Hussain           | 01734884163    | <a href="mailto:alomgir,hussain63@gmail.com">alomgir,hussain63@gmail.com</a>           |
|          |                 | IDEA                    | Abul Kalam Azad           | 01717594825    | <a href="mailto:kalam.azad7@gmail.com">kalam.azad7@gmail.com</a>                       |
|          | Kanaighat       | JASHIS                  | Md.Forid Uddin            | 01723699548    | <a href="mailto:foriduddinbd71@gmail.com">foriduddinbd71@gmail.com</a>                 |
|          |                 | IDEA                    | Shahinur Rahman           | 01911662401    | <a href="mailto:srshahin7@gmail.com">srshahin7@gmail.com</a>                           |
|          | Kotwali         | JASHIS                  | Nahrin Sutana             | 01713486220    | <a href="mailto:jashis1997@gmail.com">jashis1997@gmail.com</a>                         |
|          |                 | IDEA                    | Wadud Faisal Chowdhury    | 01718365449    | <a href="mailto:idea.leadsylhet@gmail.com">idea.leadsylhet@gmail.com</a>               |

| District | Upazila                 | Lead Organization | Name of focal person | Contact Number | E-mail of the focal person   |
|----------|-------------------------|-------------------|----------------------|----------------|--|
|          | Zakiganj                | IDEA              | Jubayer Ahmed        | 01711385512    | <a href="mailto:jubayerahmed@gmail.com">jubayerahmed@gmail.com</a>         |
|          |                         | Save the Children | Sharif Al Hasan      | 01719011624    | <a href="mailto:sharifalhasan640@gmail.com">sharifalhasan640@gmail.com</a> |
|          | Sylhet City Corporation | BDRCS             | Mr. Salam, DD & ULO  | 01637513542    | <a href="mailto:sylhet@bdracs.org">sylhet@bdracs.org</a>                   |
|          |                         |                   |                      |                |  |

### Annex 03: Government SoS From and compiled information on Flood shelter Management

| Name of the District | Union Name | Number of Affected Union | Affected people (Approx.) | Affected Household (Approx.) | Damaged Houses (Partially) | Damaged Houses (Fully) | Number of dead people (Approx.) | Number of missing people (Approx.) | Need of searching activity | Need of medical treatment | Type of medical treatment | Need of drinking water | Need of ready food | Need of dress | Emergency shelter |
|----------------------|------------|--------------------------|---------------------------|------------------------------|----------------------------|------------------------|---------------------------------|------------------------------------|----------------------------|---------------------------|---------------------------|------------------------|--------------------|---------------|-------------------|
| Sylhet               | Kanaighat  | 10                       | 72,300                    |                              | 268                        | 61                     | 0                               | 0                                  | x                          | x                         |                           | √                      | x                  | x             | √                 |
| Sylhet               | Gowainghat | 12                       | 69,165                    | 14,250                       | 345                        | 51                     | 1                               | 1                                  | x                          | √                         | First aid                 | √                      | x                  | x             | x                 |

| District     | Affected Upazila/City Corporation/Municipality      | Affected Union | Marooned HH   |           | Affected Population | Death    |
|--------------|---|----------------|---------------|-----------|---------------------|----------|
|              |   |                | 24-May-22     | 30-May-22 |                     |          |
| Sylhet       | 19 (13 Upazila, 5 Municipality, 1 City Corporation) | 95             | 65,000        | -         | 1,200,000           | 0        |
| Sunamganj    | 3   | 25             | -             | -         | 37,000              | 0        |
| Habiganj     | 1   | 1              | 87            | 10        | 348                 | 0        |
| <b>Total</b> | <b>23</b>   | <b>121</b>     | <b>65,087</b> | <b>10</b> | <b>1,237,348</b>    | <b>0</b> |

Source: ERC, DDM

| Shelter Information | Sylhet    |           | Sunamganj |           | Habiganj  |           | Total     |           |
|---------------------|-----------|-----------|-----------|-----------|-----------|-----------|-----------|-----------|
|                     | 24-May-22 | 30-May-22 | 24-May-22 | 30-May-22 | 24-May-22 | 30-May-22 | 24-May-22 | 30-May-22 |
|                     |           |           |           |           |           |           |           |           |

|                                     |             |           |          |          |            |           |             |           |
|-------------------------------------|-------------|-----------|----------|----------|------------|-----------|-------------|-----------|
| Shelter Opened                      | 325         | 325       | 20       | 0        | 1          | 1         | 346         | 326       |
| People in Shelter (Male)            | 2496        | 10        | 0        | 0        | 95         | 15        | 2591        | 25        |
| People in Shelter (Female)          | 2444        | 8         | 0        | 0        | 180        | 20        | 2624        | 28        |
| People in Shelter (Child)           | 206         | 2         | 0        | 0        | 73         | 5         | 279         | 7         |
| People in Shelter (PWD)             | 0           | 0         | 0        | 0        | 0          | 0         | 0           | 0         |
| <b>People in Shelter (Total)</b>    | <b>5146</b> | <b>20</b> | <b>0</b> | <b>0</b> | <b>348</b> | <b>40</b> | <b>5494</b> | <b>60</b> |
| Livestock in Shelter (Cow/Buffalo)  | 35          | 0         | 0        | 0        | 0          | 0         | 35          | 0         |
| Livestock in Shelter (Goat/Lamb)    | 0           | 0         | 0        | 0        | 0          | 0         | 0           | 0         |
| Livestock in Shelter (Other)        | 0           | 0         | 0        | 0        | 0          | 0         | 0           | 0         |
| <b>Livestock in Shelter (Total)</b> | <b>35</b>   | <b>0</b>  | <b>0</b> | <b>0</b> | <b>0</b>   | <b>0</b>  | <b>35</b>   | <b>0</b>  |
| Medical Team (formed)               | 140         | 140       | 0        | 0        | 0          | 0         | 140         | 140       |
| Medical Team (Deployed)             | 140         | 140       | 0        | 0        | 0          | 0         | 140         | 140       |

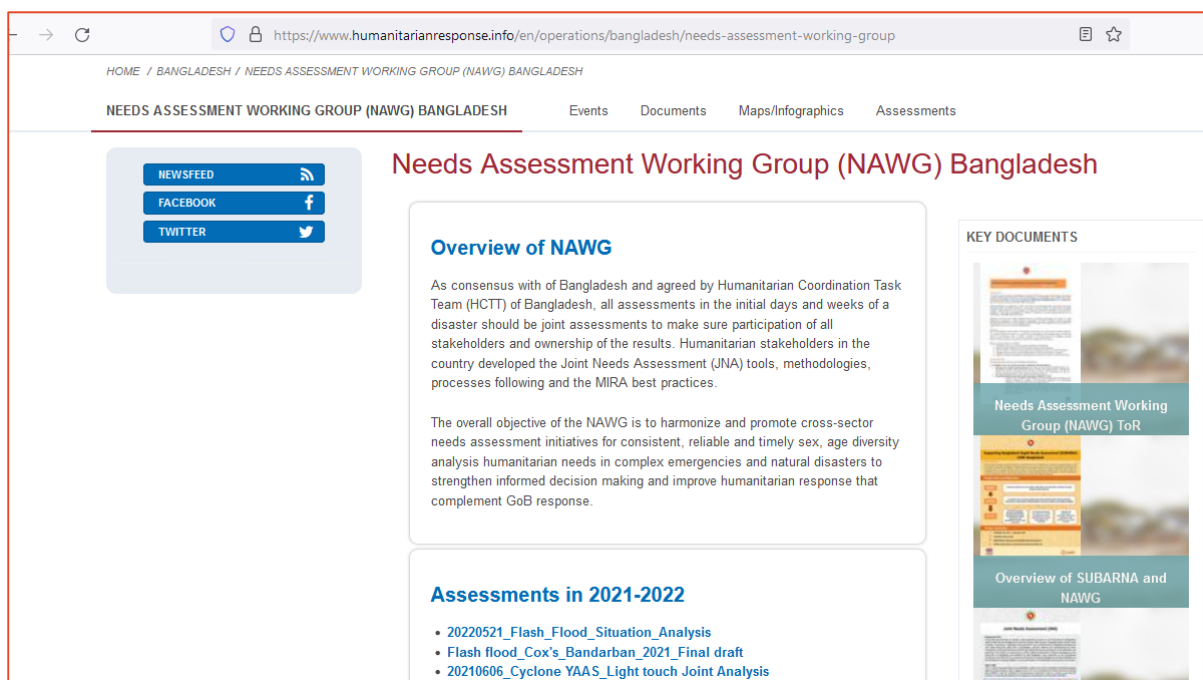
Source: ERC, DDM

## Annex 04: Dataset and Tools

Please click [here](#) to access the tools and dataset.

## Contacts and Update

For Regular Update Please visit [NAWG](#) website.



**Note: The final draft of the report published on **May 30, 2022** with the consensus of all clusters, working group, NAWG member agencies and relevant humanitarian agencies including Government.**

**Please reach us for any queries related to this report:**

1. Kaiser Rejve, Director, Humanitarian and Resilience Programme, CARE Bangladesh and Co-Chair-NAWG. E: [Kaiser.rejve@care.org](mailto:Kaiser.rejve@care.org)
2. Kazi Shahidur Rahman, Humanitarian Affairs Specialist, UNRCO, Bangladesh. E: [shahidur.rahman@one.un.org](mailto:shahidur.rahman@one.un.org)
3. Md. Fuad Ur Rabbi, Programme Coordinator, SUBARNA, CARE Bangladesh E: [fuadur.rabbi@care.org](mailto:fuadur.rabbi@care.org)