

# Shelter Sector Türkiye

Earthquake Response  
27 February 2023



**Shelter Sector Türkiye**  
ShelterCluster.org  
Coordinating Humanitarian Shelter



# Agenda



- Situation update
- Assessments
- Response
- Minimum assistance package
- Observations from the field: ongoing and planned response; needs; constraints; achievements
- AOB



**Shelter Sector Türkiye**  
ShelterCluster.org  
Coordinating Humanitarian Shelter

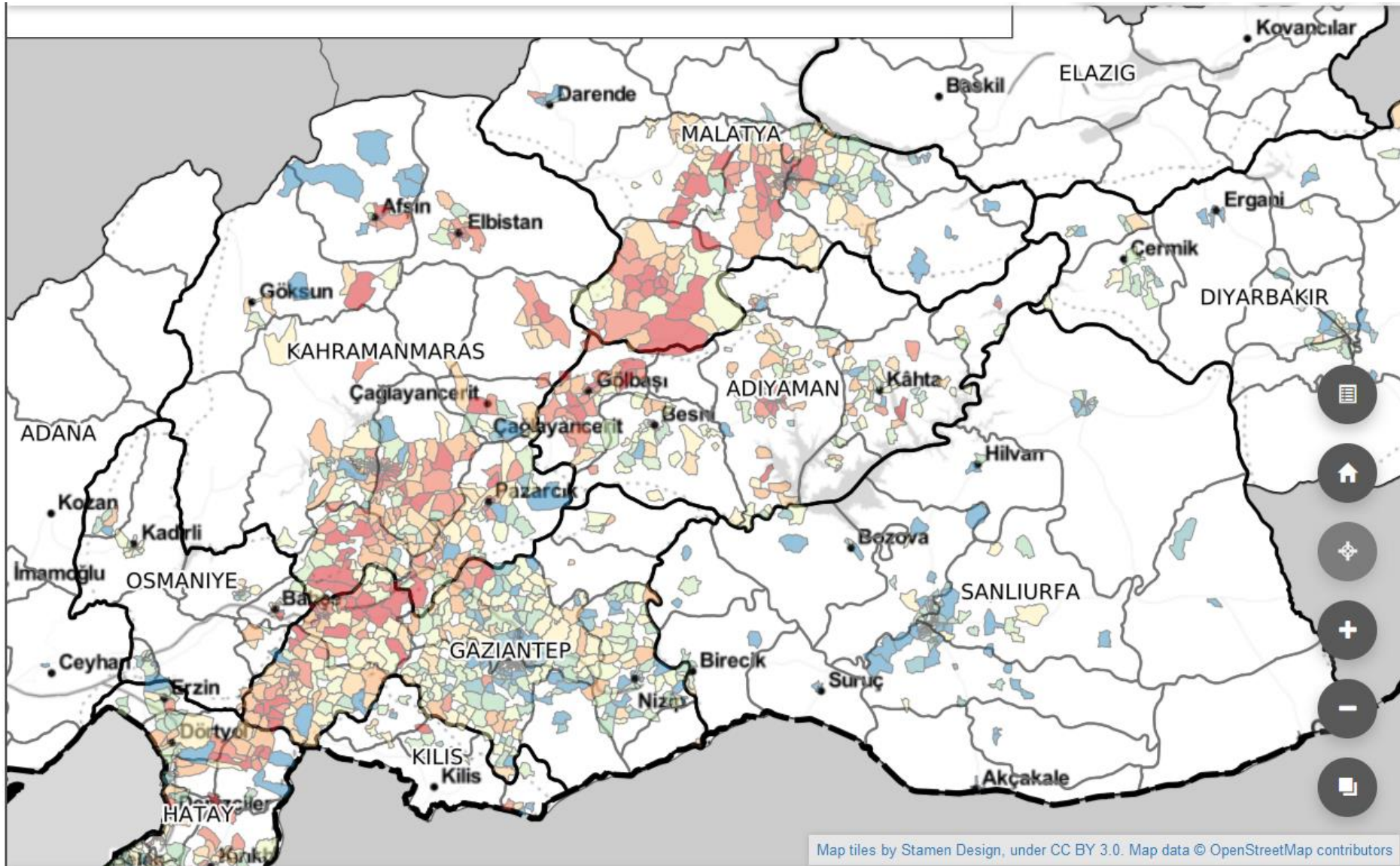


# Situation update

- 44,218 deaths (24/02)
- 115,000 injured people (24/02)
- Official figures stand at 164,300 buildings heavily damaged as of 23 February, with over 520,000 units
- An estimated 1-1.3 million people are displaced in the affected region.
- An estimated 888,500 people are in government coordinated tent sites or containers.



# Damaged buildings per Neighborhood



Map tiles by Stamen Design, under CC BY 3.0. Map data © OpenStreetMap contributors

# Situation update

	Definition	Estimates
Displaced in province	Those who have become homeless/displaced within the affected provinces. These people are sheltering in government-coordinated tent- or containersites, emergency shelter in public buildings (e.g. mosques, universities, stadiums), or makeshift settlements and other solutions	1,300,000-1,600,000
Displaced out of province (total)	The total number of people who have left the affected provinces for other areas. Since people left by their own means, it is difficult to track where they are. This includes people in new sublets/rents in cities, host families, etc.	1,000,000

Türkiye Earthquake

February 2023

Bi-weekly Highlights - 24/02/2023



**Shelter Sector Türkiye**  
ShelterCluster.org  
Coordinating Humanitarian Shelter



# Situation update

	Definition	Estimates
Homeless	Estimated number of homeless people. These are displaced within the provinces, evacuated, or left by their own means.	1,500,000
Evacuees (government-led)	The number of evacuees coordinated by the government. These people are sheltering in hotels, dormitories, and other public buildings across Türkiye.	448,000
Cross-border	Number of Syrian refugees in southern Türkiye who have reportedly crossed the border into Syria	20,000

Türkiye Earthquake

February 2023

Bi-weekly Highlights - 24/02/2023



**Shelter Sector Türkiye**  
ShelterCluster.org  
Coordinating Humanitarian Shelter



# Displacement Impact for Turkiye EQ Response

---

- According to DTM, an estimated 2.1 million people have been displaced as a result of the series of Earthquakes that hit in February 2023
- An estimated 1.2 million of these are currently in collective displacement sites – ‘Temporary Settlements’ across the 11 affected regions
- Sector currently identifying multiple different settlement typologies – **‘Formal Settlements’** – Tents, Containers, Collective Centres and **Informal Settlements** – spontaneously set up displacement sites - likely in rural areas – mostly tent areas but can also be collective centres
- Understanding Short term vs Long term plan – clarity on plans and timelines, as well as process and priorities of AFAD for any relocations into more longer term sites



# Current Sector Activities

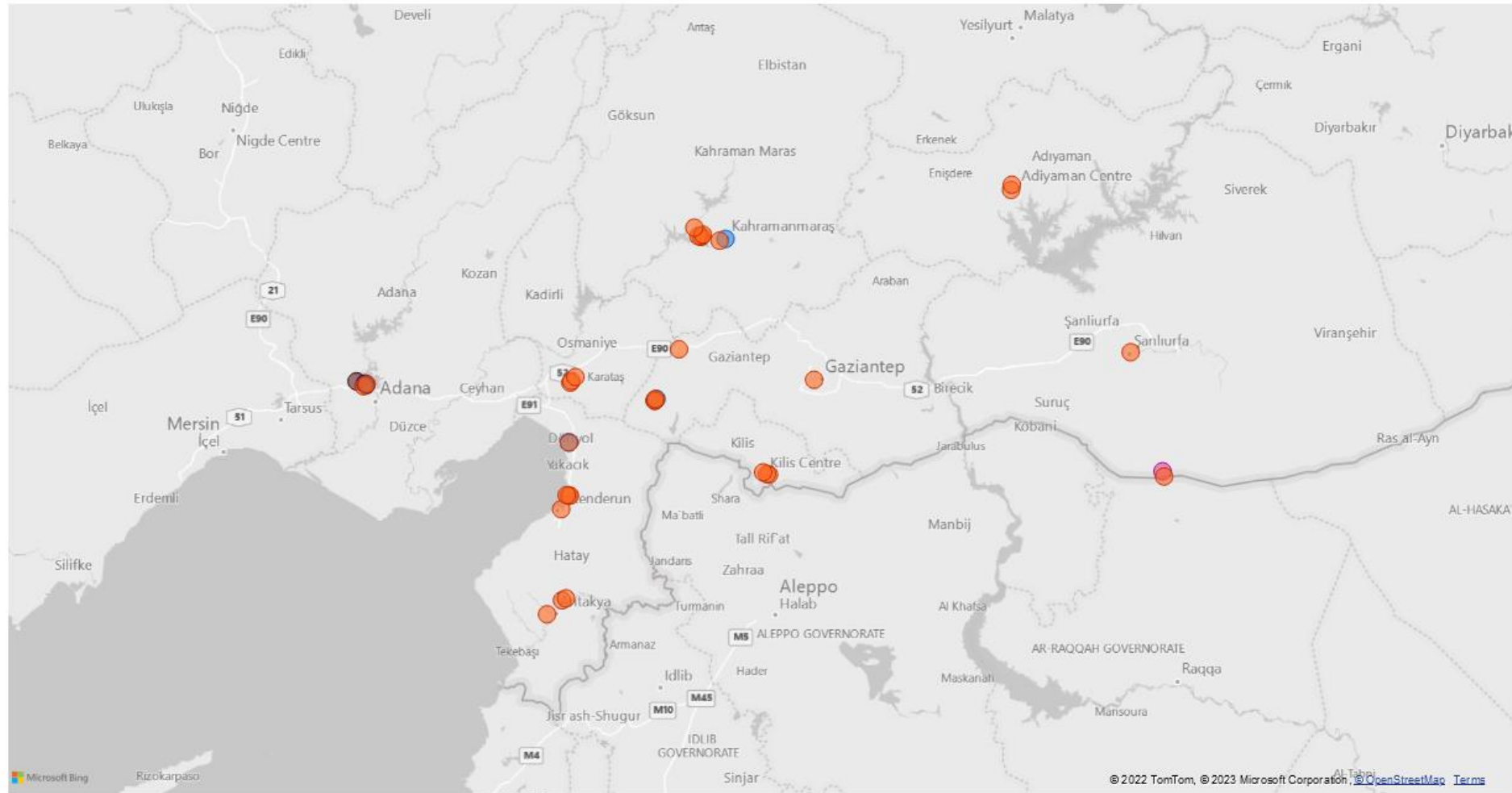
---

- Undertaking a Rapid TSS Assessment across all sites in the 11 affected provinces which will be updated every 15 days
- Site Assessments will be available to all humanitarian actors to inform prioritization and decision making – through the live dashboard and excel datasets, as well as information products
- TSS Sector is advocating that immediate humanitarian efforts are directed to areas of most need, being the informal settlements, primarily in rural areas
- Identifying TSS partners to take on community engagement & service monitoring activities in Informal Settlements



# Site Map

Type of settlement ● Container city ● Government building ● Other ● Public hall ● Religious building ● Sport complex / gym ● Tent city



Site Map

State of Play

Site Information-1

Site Information-2

Site Information-3

Protection / Vulnerability

Site Environment KII

WASH KII-1

WASH KII-2

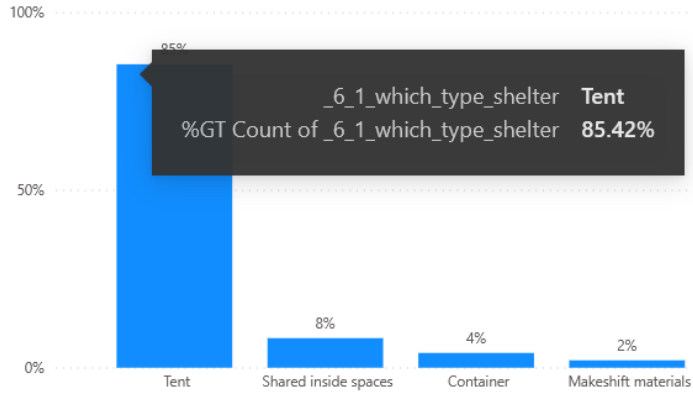
WASH KII-3

Shelter / NFI KII

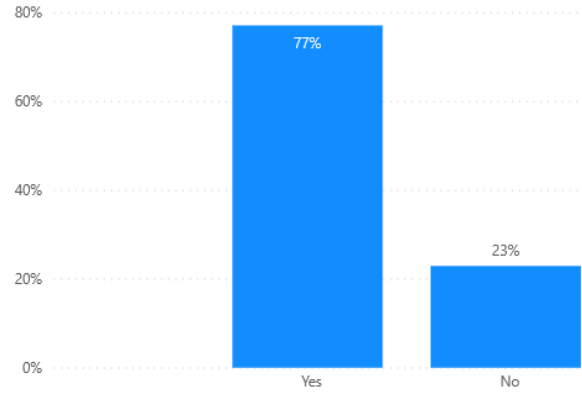
Food

Health

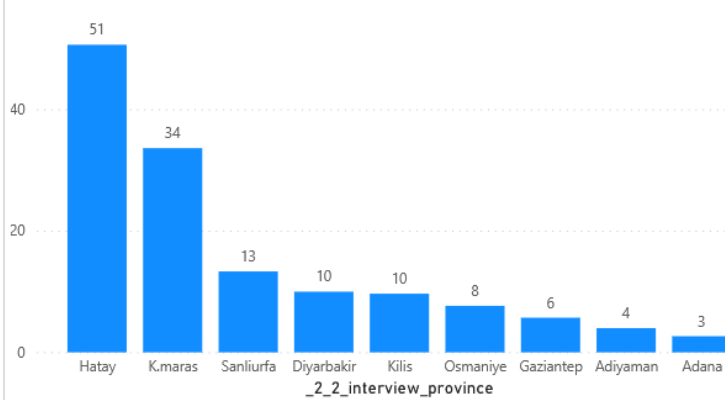
6\_1\_which\_type\_shelter



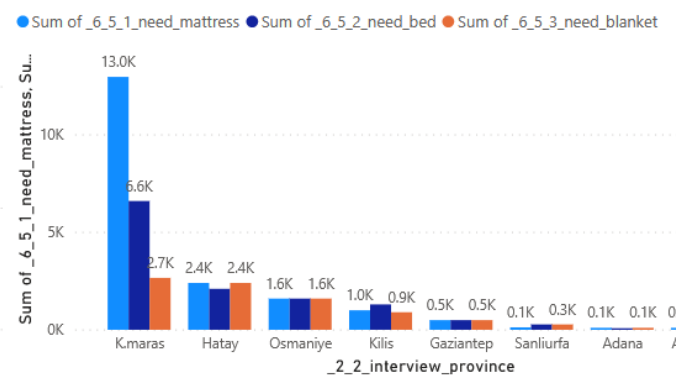
6\_4\_bedding\_item



Average of 6\_2\_how\_many\_people\_per\_shelter

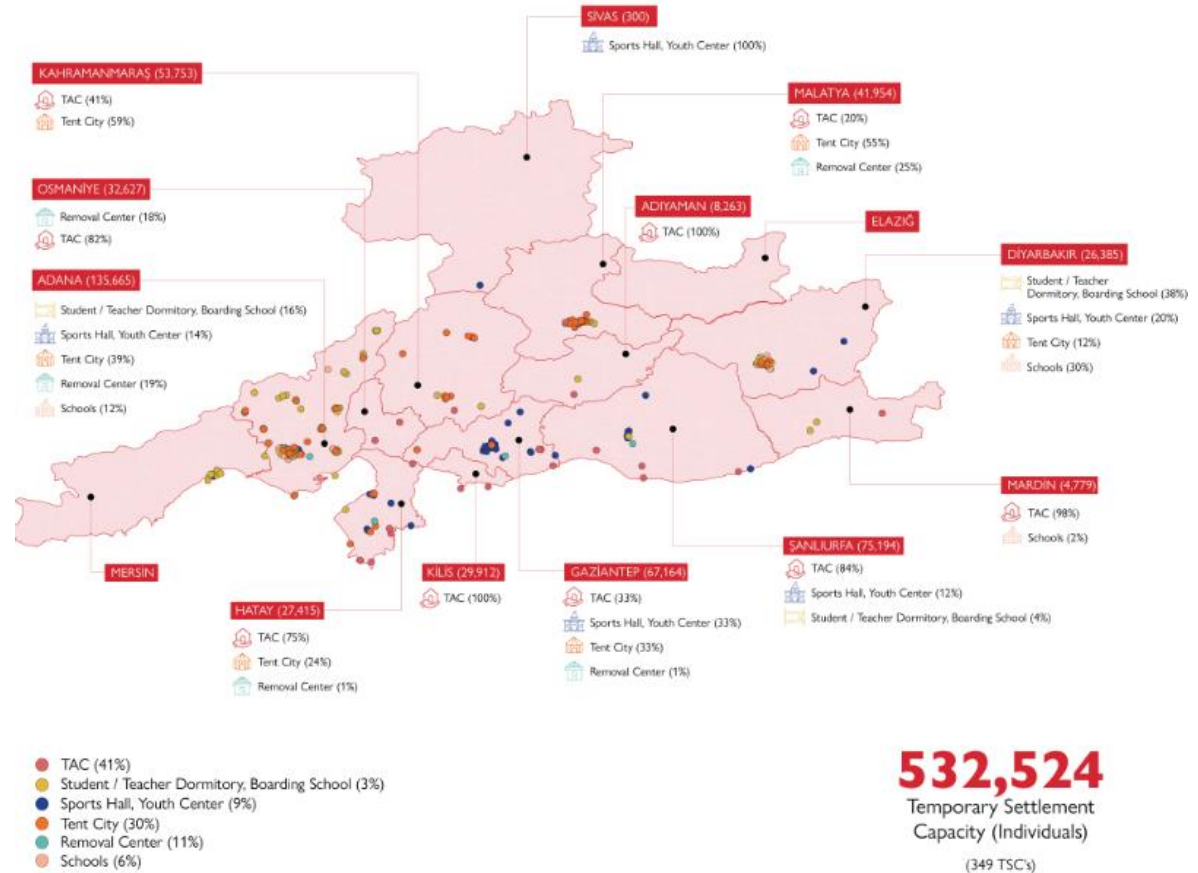


Sum of 6\_5\_1\_need\_mattress, Sum of 6\_5\_2\_need\_bed and Sum of 6\_5\_3\_need\_blanket



## TÜRKİYE 2023 EARTHQUAKES TEMPORARY SETTLEMENT CENTERS

27 FEBRUARY, 2023 / 11:30



**532,524**  
Temporary Settlement  
Capacity (Individuals)  
(349 TSC's)

\* Information on temporary accommodation centers shown in the Map is compiled through remote sensing methods, government officials' statements and direct observations of IOM's field staff. Figures on the map indicate the capacities of the temporary accommodation centers.



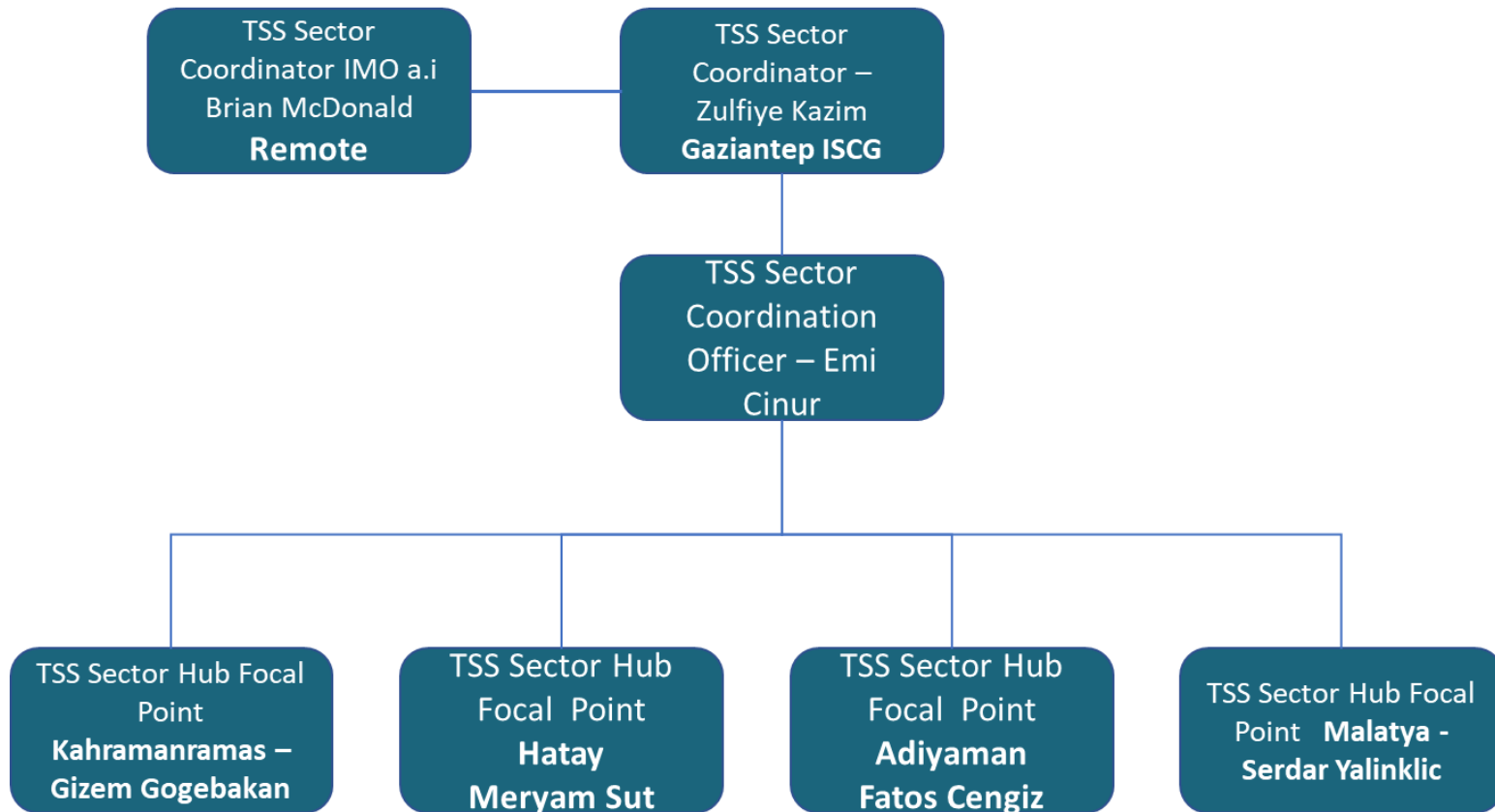
## TSS Sector Strategy – UN Flash Appeal

---

- Ensure that temporary settlements allocated by the government—have access to shelter, basic services and essential supplies
- Work closely with protection actors to ensure timely identification and support for at risk profiles
- Improve living conditions in temporary settlements to increase the dignity and privacy of people staying in them, and reduce health and protection risks
- **Provide regular updates on the locations and needs of people in temporary settlements, including temporary accommodation site mapping and assessments**
- Strengthen the capacities of the government-led efforts through technical and in-kind interventions



# TSS Structure – Gaziantep and Hubs



# TSS Structure - Contacts

---

Role	Location	Name	Email	Phone number
TSS Sector Focal Point	Ankara	Conrado Navidad	<a href="mailto:cnavidad@iom.int">cnavidad@iom.int</a>	+63 908 865 4543
TSS Sector Coordinator	Gaziantep	Zulfiye Kazim	<a href="mailto:zukazim@iom.int">zukazim@iom.int</a>	+44 7584859688
TTS Sector Coordination Officer	Gaziantep	Emineur Cinar	<a href="mailto:ecinar@iom.int">ecinar@iom.int</a>	+44 7470690102
TSS Focal Point	Hatay	Meryem Sut	<a href="mailto:msut@iom.int">msut@iom.int</a>	+90 05303790510
TSS Focal Point	Kahranmaras	Gizem Gogebakan	<a href="mailto:gakay@iom.int">gakay@iom.int</a>	+90 5370407069
TSS Focal Point	Adiyaman	Fatos Cengiz	<a href="mailto:fcengiz@iom.int">fcengiz@iom.int</a>	+90 5534689477
TSS Focal Point	Malatya	Serdar Yalinklic	<a href="mailto:syalinkilic@iom.int">syalinkilic@iom.int</a>	+905334090360
TSS Information Management	Remote	Brian McDonald	<a href="mailto:bmcdonald@iom.int">bmcdonald@iom.int</a>	+353 86 874 6669



# Shelter Sector Coordination

- 54 organisations (comprising 118 people) registered on the Shelter Sector Coordination contact list.
- Settlement Planning Advisor – Jessica Mamo
- Technical Working Group is being set up.

**Pablo Medina**  
 Shelter Sector Coordinator - Ankara  
 IFRC  
 +905379228264  
[pablo.medina@ifrc.org](mailto:pablo.medina@ifrc.org)

**Marcin Pius**  
 Information Management  
 Coordinator/Roving coordinator  
 Australian Red Cross  
 +90 539 897 22 59  
[sheltersectorim2.turkiye@ifrc.org](mailto:sheltersectorim2.turkiye@ifrc.org)

**Tom Bamforth**  
 Shelter Sector Hub Coordinator - Gaziantep  
 CARE  
 +905389272158  
[thomas.bamforth@care.org](mailto:thomas.bamforth@care.org)

**Des McCall**  
 Technical Coordinator  
 Canadian Red Cross  
 +90 539 896 76 38  
[sheltersectortechco2.turkiye@ifrc.org](mailto:sheltersectortechco2.turkiye@ifrc.org)

**Bouke Pieter Ottow**  
 Information Management Coordinator  
 The Netherlands Red Cross  
 +90 539 930 01 68  
[sheltersectorim1.turkiye@ifrc.org](mailto:sheltersectorim1.turkiye@ifrc.org)

**Global Shelter Cluster**  
 ShelterCluster.org  
 Coordinating Humanitarian Shelter

My account Log out Automatic translation  
 Dil Seçim Çeviri

HOME GLOBAL SHELTER CLUSTER OPERATIONS RESOURCES ABOUT US SEARCH

VIEW EDIT

In regions Europe and Türkiye and in group Türkiye

## Türkiye Earthquake 2023

**ADD CONTENT**

**Administer Group**

**Un-follow this response**

- Dashboard
- Documents (26)
- Discussions (1)
- Events (6)
- Data Collection (1)
- News (2)

**KEY EXTERNAL RESOURCES +**

- Relief Web - Türkiye/Syria Earthquakes
- AFAD (Disaster and Emergency Management Presidency)
- Ministry of Environment, Urbanization and Climate Change

**COORDINATION MANAGEMENT +**

- Contact List
- Meetings
  - Shelter Sector Meetings
- Appeals/Resource Mobilization
  - UN Appeals and Response Plans
- Government and regulatory policy

**FEATURED DOCUMENTS**

**ACIL YARDIM ÇAĞIRISI TÜRKİYE** 2023

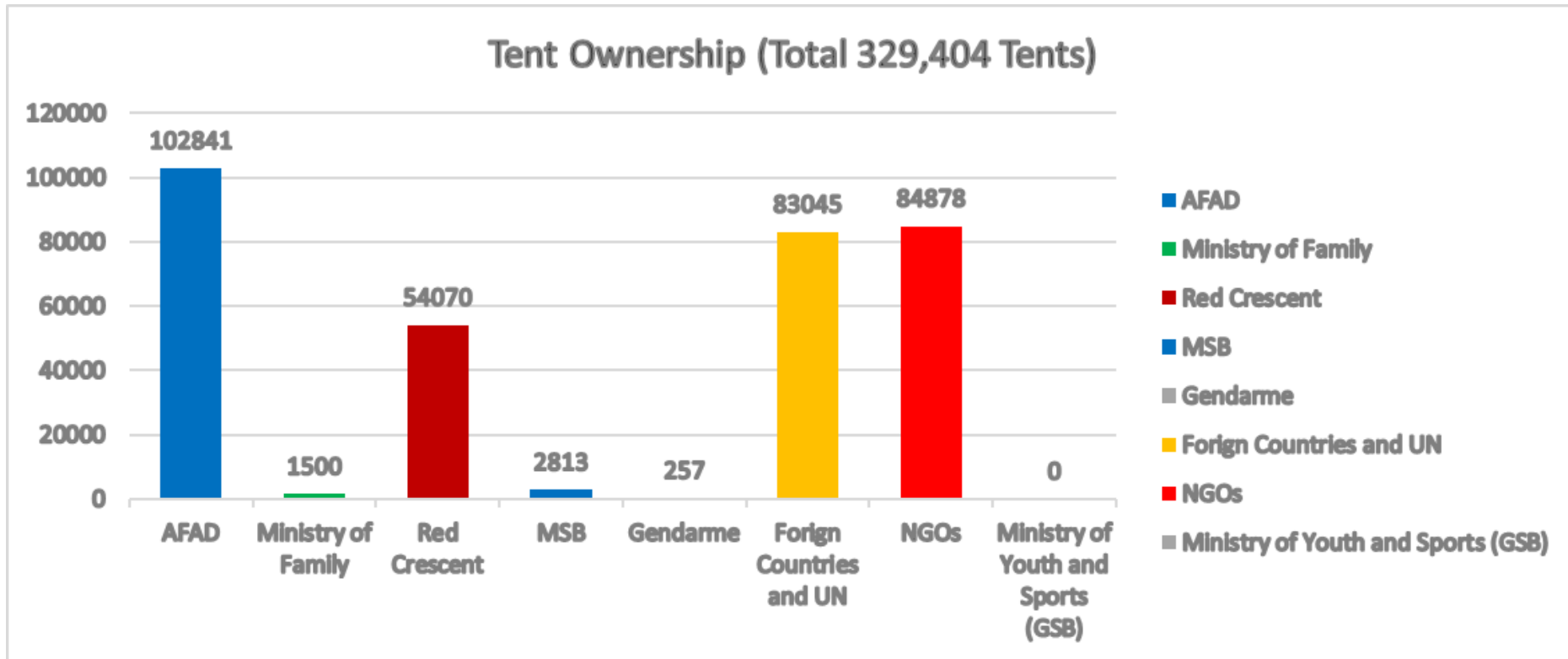
**ACIL YARDIM ÇAĞIRISI TÜRKİYE** [1+2+3+4] PDF  
 Türkiye'de Meydana Gelen Depremler İçin Acil Yardım Çağrısı#13; &#13; Bu belge, 6 Şubat 2023 tarihinde...

**OVERVIEW**

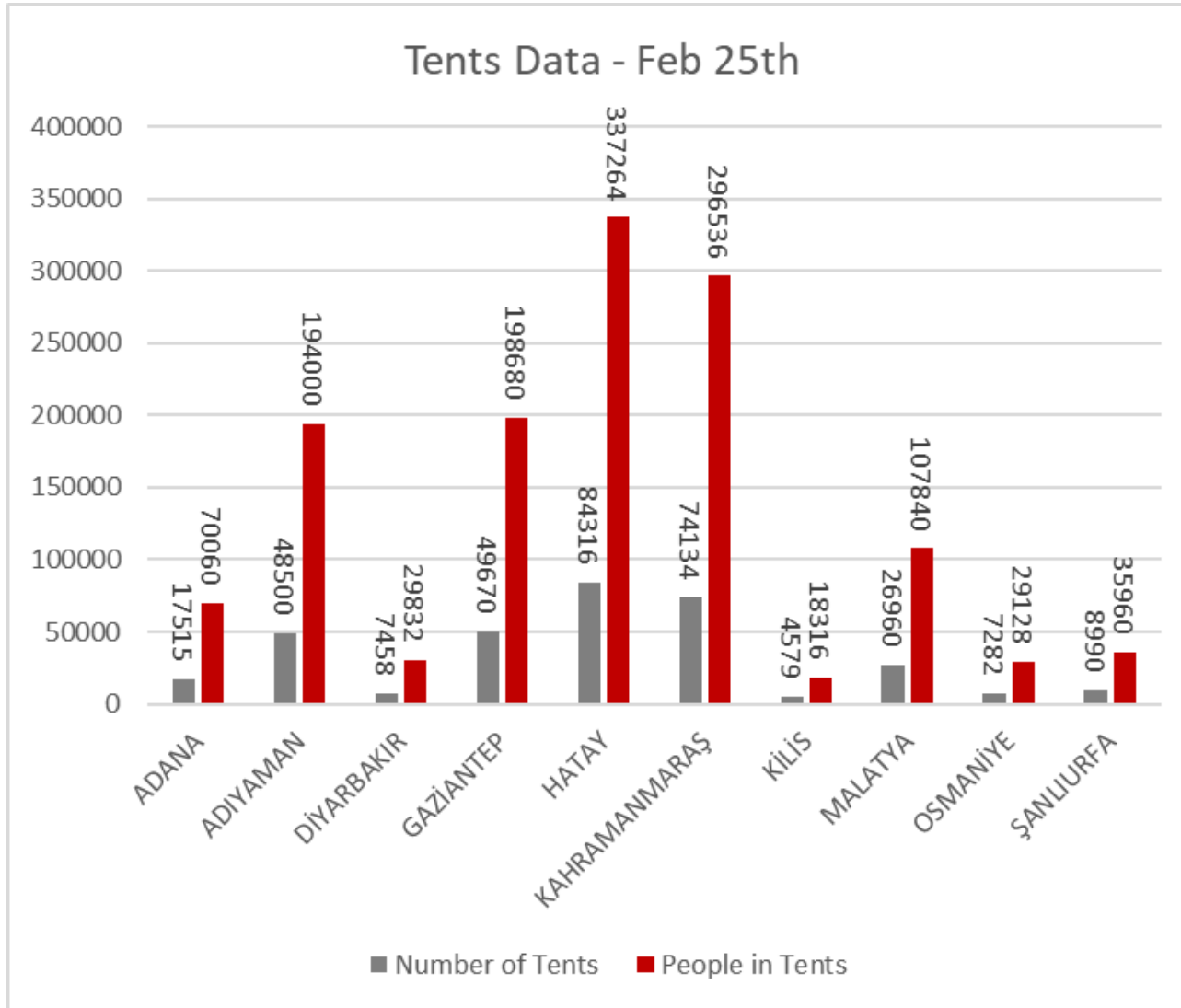
On 6 February 2023, two devastating earthquakes, measuring 7.7 and 7.6 magnitude on the Richter Scale, struck Pazarçık and Elbistan in Kahramanmaraş, Türkiye. The initial earthquake was followed by over 3,100 aftershocks, including a 7.6-magnitude earthquake that hit Elbistan, according to the Turkish Disaster and Emergency Management Presidency (AFAD). Impacts have been felt across the 11 provinces in which a state of emergency has been declared (Adıyaman, Gaziantep, Kilis, Hatay, Malatya, Diyarbakır, Adana, Osmaniye, Kahramanmaraş, Sanlıurfa and Elazığ), with Hatay, Kahramanmaraş and Gaziantep provinces reportedly hardest hit. These earthquakes are the largest to hit Türkiye in the last century, and the most significant to strike the country's south-east region in hundreds of years.

**RECENT DOCUMENTS** **UPCOMING EVENTS**

# Tent ownership

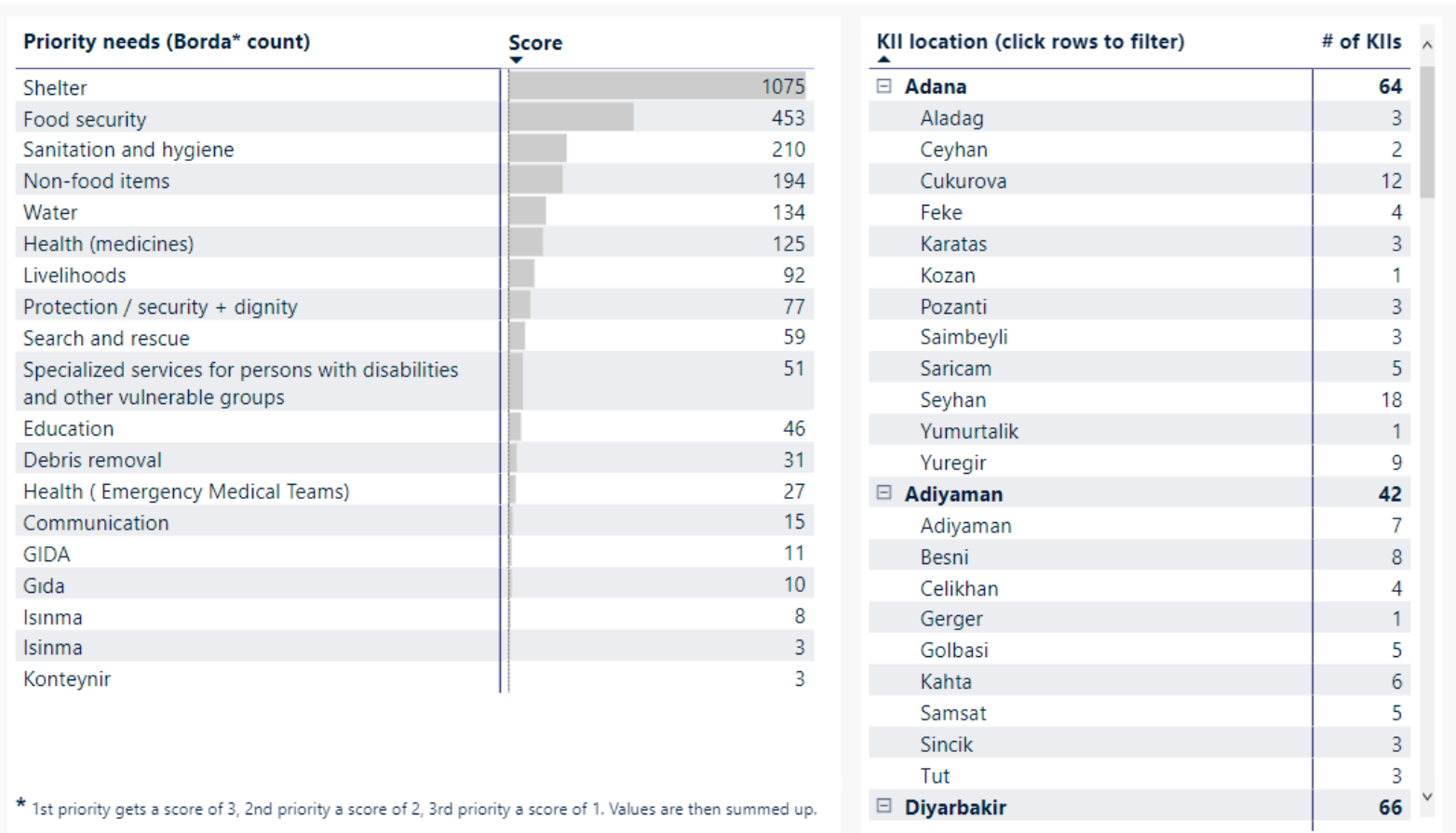


# Tent distribution



# Preliminary MIRA results

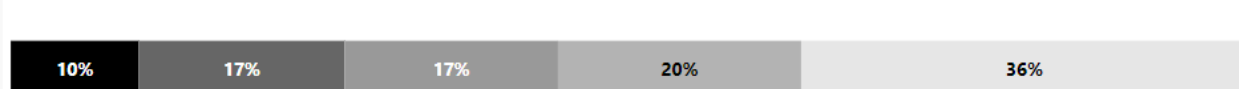
## PRIORITY NEEDS



# Shelter Needs

## SHELTER NEEDS

% Completely destroyed/severe/significant/minor/no damage



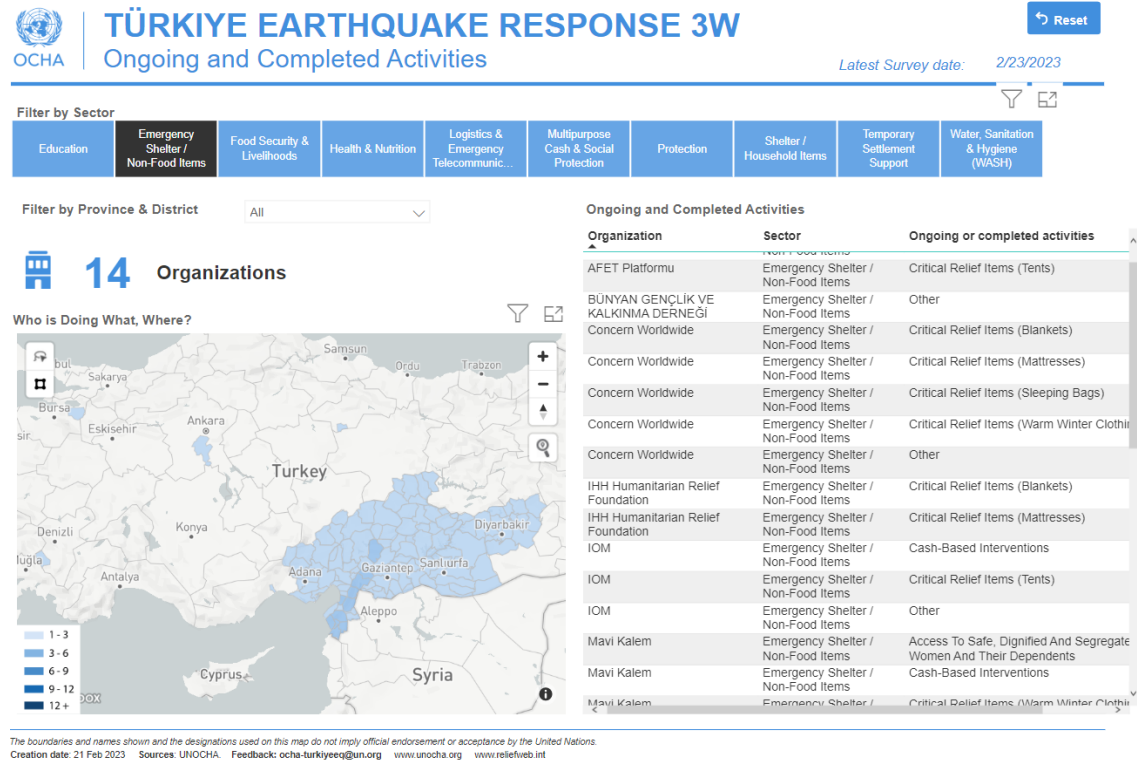
Top 5 shelter needs	Count
New/additional tents	295
Cash	163
Items for safety/privacy (locks, partitions, lights)	91
No specific shelter needs	80
Plaster or material for repairing cracked walls	80
Tarpaulin/plastic sheeting	71
Basic electrical items (wiring, switches, sockets)	54
Roofing materials	44
Concrete	43
Bricks/stone blocks	39
Basic tools (hammer, screwdriver, wrenches)	38
Doors/doorframes	38
Portable ramps	28
Windows/window frames	25
Timber	14
Wire	14

Where are the displaced people living	Count
Staying with host families	132
Tents / makeshift settlements	129
Government provided Temporary Accommodation Centres	82
Public buildings, mosques, schools	73
Sleeping outside with no shelter	50

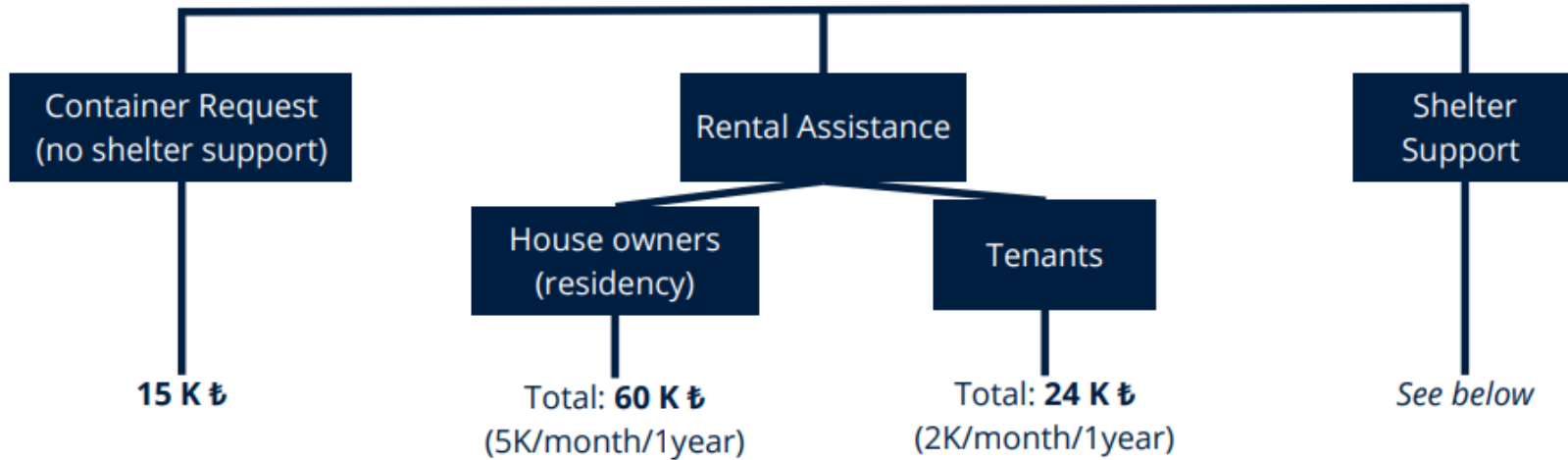
Shelter challenges in displaced sites	Count
The number of shelters is insufficient	134
Shelters are too small / not enough space for entire households	78
The number of beds is insufficient	75
No bathing facilities	69
Lack of heating (colder climates)	65
No latrines	54
No challenges	50
Lack of insulation from cold	49
Lack of privacy inside shelter (no partitions, no doors)	49
Shelters are not accessible for persons with disabilities	43
Lack of isolation possibilities for communicable diseases	40
Lack of information available	38
Lack of latrines accessible for persons with disabilities	38
Cost of accommodation	33
Lack of bathing facilities accessible for persons with disabilities	31
Lack of gender segregated bathing facilities	30
Lack of gender segregated latrines	27
Leaking during rain	22
No feedback or complaint mechanism	21

# 3W and monitoring

- 14 organisations that have ongoing or have already completed shelter activities.
- 4 organisations that have planned shelter activities.
- Discussion on Flash Appeal response monitoring to commence this week, starting with selection of a tool (Activity Info – Kobo – Excel – other?)
- Discussion on the design of the monitoring framework will commence shortly.



# CASH AMOUNTS PER SCENARIO



## Shelter Support

*If the house is destroyed/immedately demolished/heavily damaged/moderately damaged*

	Married* Victims	Divorced Victims	Single Victims	Residing in parent's residence Victim	Apartment worker Victim
<b>Accommodation Support</b>	60 K ₺	60 K ₺	24 K ₺	24 K ₺	24 K ₺
<b>Relocation Support</b>	15 K ₺	15 K ₺	15 K ₺	15 K ₺	15 K ₺

# Minister of Environment, Urbanization and Climate Change – 10 item plan for the reconstruction process from the earthquake zone

1. All disaster risks examined.
2. Micro-zoning and geological studies of the earthquake resistance of the ground will continue.
3. In the old residential areas, options including zoning restriction and reduction in building density will be evaluated.
4. For solid ground, places where liquefaction will not occur will be determined.
5. The distance to the fault lines will be calculated.
6. The focus will be on the 'plain to mountains settlement model' for resilient cities.
7. The raft foundation tunnel formwork system will be applied in all structures.
8. It will be designed in accordance with the city's culture, art, natural and historical texture, sociology and demographic structure.
9. Within two months, the construction of 200 thousand houses will be started by TOKİ. None of the residences will exceed the ground plus 3-4 floors.
10. There will be universities, scientists, engineers, architects, city planners at every stage of the process.

## 10 MADDEDE DEPREM BÖLGESİNİ YENİDEN İHYA VE İNŞA SÜRECİ BİLİMSEL, HIZLI, GÜÇLÜ



YERLEŞİME AÇILACAK ALANLARDA  
TÜM AFET RİSKLERİNİN TESPİTİ  
YAPILYOR; **MORFOLOJİK, JEOLÖJİK,  
JEOFİZİK, JEOTEKNİK, HİDROJEOLÖJİK,  
SİSMOTEKNİK** ARAZİ KULLANIMI  
İNCELENİYOR.

ZEMİNİN DEPREME  
DAYANIKLILIĞINI ORTAYA KOYAN  
**MİKRO-BÖLGELEME VE  
JEOLÖJİK ETÜT ÇALIŞMALARI**  
DEVAM EDİYOR.

ESKİ YERLEŞİM ALANLARININ  
ZEMİN İNCELEMELERİNE GÖRE  
**İNAR KISITLAMASI, BİNA  
YOĞUNLUĞUNDA AZALTIM**  
DAHİL SEÇENEKLER  
DEĞERLENDİRİLİYOR.

SAĞLAM ZEMİN İÇİN  
**SİVİLİŞMANIN OLMAYACAĞI  
YERLER** BELİRLENİYOR.

**FAY HATLARINA  
MESAFE**  
HESAPLANIYOR.

DİRENÇLİ ŞEHİRLER İÇİN  
**OVADAN DAĞLARA  
DOĞRU YERLEŞİM MODELİ**  
ÜZERİNDE DURULUYOR.

RADYE TEMEL  
ÜZERİNE TÜNEL KALIP  
SİSTEMİ **TÜM  
YAPILARDA**  
UYGULANACAK.

ŞEHİRİN KÜLTÜRÜNE,  
SANATINA, DOĞAL VE TARİHİ  
DOKUSUNA, SOSYOLOJİSİNE  
VE DEMOGRAFİK YAPISINA  
**UYGUN ŞEKİLDE  
TAMAMLANACAK.**

İKİ AY İÇERİSİNDE TOKİ  
ELİYLE 200 BİN KONUTUN  
İNŞASINA BAŞLANACAK.  
**KONUTLARIN HİÇBİRİ  
ZEMİN ARTI 3-4 KATI  
GEÇMEYECEK.**

**SÜRECİN HER AŞAMASI**  
ÜNİVERSİTELER, BİLİM  
İNSANLARI, MÜHENDİS, MİMAR,  
ŞEHİR PLANLAMACILARI  
OLACAK.



T.C. ÇEVRE, ŞEHİRCİLİK VE  
İKLİM DEĞİŞİKLİĞİ BAKANLIĞI

# Planned TOKI houses and locations by province

Planned Number of Houses and Locations



# Minimum Assistance Package

- Comparison between the IFRC/ICRC Emergency Items Catalogue and the X-border cluster standard kits

# Cross cutting issues

- Environment / Debris



**Shelter Sector Türkiye**  
ShelterCluster.org  
Coordinating Humanitarian Shelter



**Please share your  
feedback at:**

[Shelter Sector Türkiye post  
meeting survey](#)



**Shelter Sector Türkiye**  
ShelterCluster.org  
Coordinating Humanitarian Shelter

