

Shelter Sector Türkiye

Earthquake Response

4th April 2023



Shelter Sector Türkiye
ShelterCluster.org
Coordinating Humanitarian Shelter



Agenda

1. Situation Overview
2. Hub Coordination | Update
3. Technical Coordination | Update
4. Strategic Priorities | Presentation + Discussion
5. AOB



Situation overview

Coordination

The shelter sector is actively coordinating with shelter actors, the other humanitarian sectors and relevant authorities at Gaziantep level and through its focal points in four of the most affected provinces (Hatay, Adiyaman, Kahramanmaraş and Malatya) in need of shelter assistance – matching the established UNDAC / OCHA Intersectoral Coordination Hubs at Province level.

At Gaziantep level, there is an open line of communication with AFAD and a representative of the MoFA, for regular coordination on Shelter Sector strategic issues and on partners operational planning coverage and challenges – please reach out as required.

Coordination Structure

Shelter Sector Coordination Team | Gaziantep Based

Francisco Monteiro | Coordinator

Francisco.monteiro@ifrc.org

FP | MHPSS

FP | Women Empowerment

FP | CBI WG

Marcin Pius | Roving Coordinator

ShelterSectorIM2.Turkiye@ifrc.org

FP | Hub Coordination

FP | Protection, Gender & Inclusion

Heleen Elenbaas | IM

ShelterSectorIM1.Turkiye@ifrc.org

FP | Information Management WG

FP | CBI WG

Incoming | Environmental Coordinator (7 April)

Incoming | Technical Coordinator (15 April)



Shelter Sector Türkiye

ShelterCluster.org

Coordinating Humanitarian Shelter



Situation overview

Damage # units (AFAD, 3 April)

Province	Collapsed	To be demolished	Heavy damaged	Medium damage	Light damage	Total
Adana	352	302	4,302	16,734	113,455	135,145
Adiyaman	14,057	6,330	49,814	22,366	97,998	190,565
Diyarbakir	448	351	11,558	14,122	160,788	187,267
Elazig	75	178	16,352	2,069	42,349	61,023
Gaziantep	8,151	5,915	29,474	24,653	309,337	377,530
Kahramanmaraş	20,343	13,388	87,573	22,046	215,227	358,577
Malatya	12,152	7,670	95,314	19,691	156,640	291,467
Hatay	40,343	33,698	216,148	43,636	263,581	597,406
Kilis	602	198	2,597	1,644	35,300	40,341
Osmaniye	1,531	2,334	17,111	4,874	94,363	120,213
Sanliurfa	1,646	1,200	10,626	9,542	308,752	331,766
Total	99,700	71,564	540,869	181,377	1,797,790	2,691,300

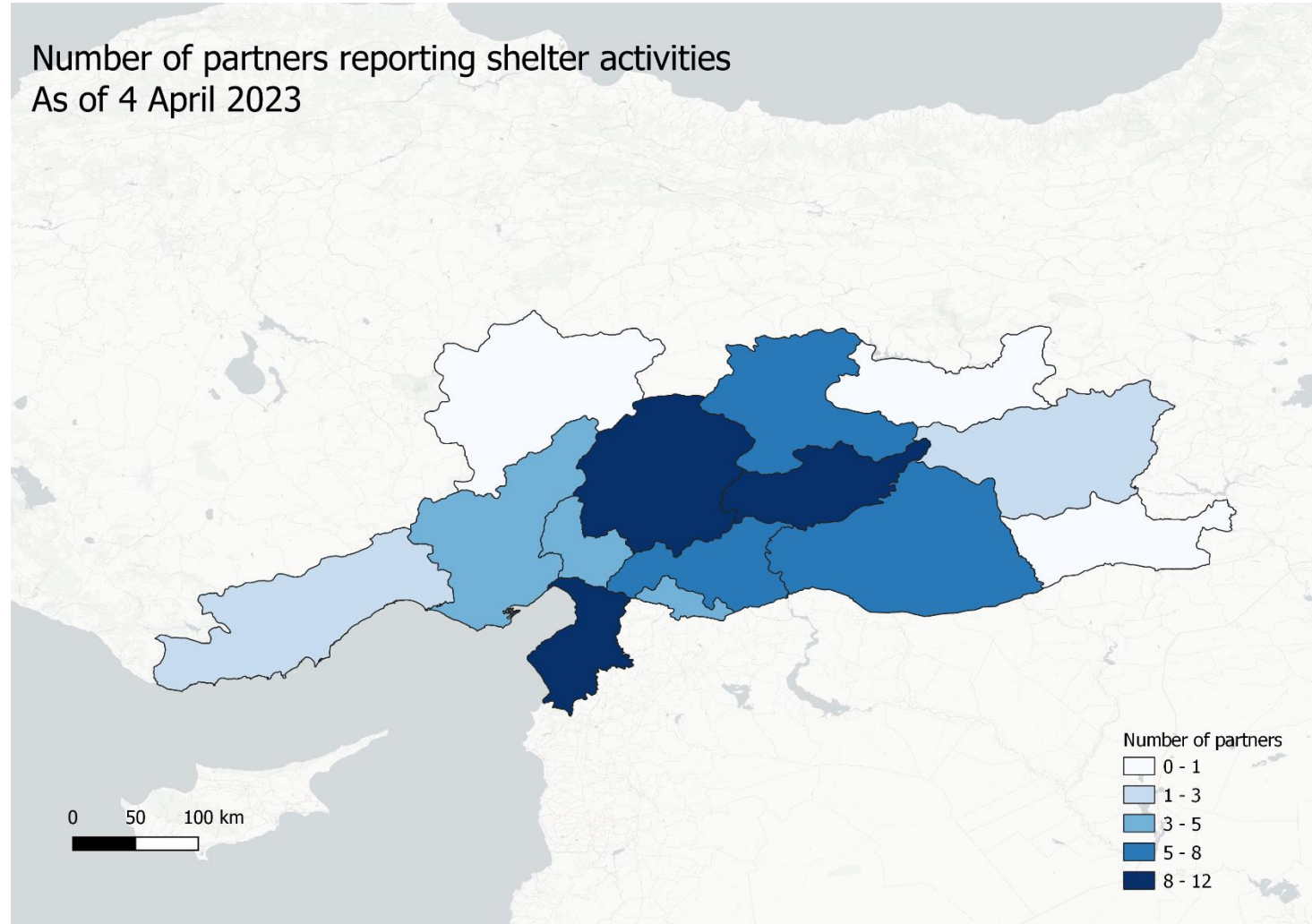
Please note that this refers to the number of assessed units (including units for other than residential purposes), the total number of buildings is not available.



Situation overview

Partner presence

Number of partners reporting shelter activities
As of 4 April 2023



Source: ActivityInfo (04/04/23)

Situation overview

Coverage | Reach (04/04/2023)

To date, partner humanitarian organizations coordinating and reporting through the Shelter Sector, as delivering Sheltering and Basic Household Items (BHI / Shelter NFI's) assistance across all the 11 affected provinces, have approximately reached:

- **769,536 people / 230,400 Households** with improved living space assistance (Tents, RHU's and Tarpaulins)
- **4,201,600 people / 1,257,964 Households** with Basic Household Items assistance (Clothing, Cooking items, Thermal Comfort items, Safety and Security Items, and Sleeping items)

Situation overview

Coverage | Reach HH NFIs

1M

of households that received assistance to improve their interior living conditions

940K

households who have been supported to improve sleeping conditions

84K

households who have been supported to improve ability to cook and eat

62K

households who have been supported to improve their interior thermal comfort

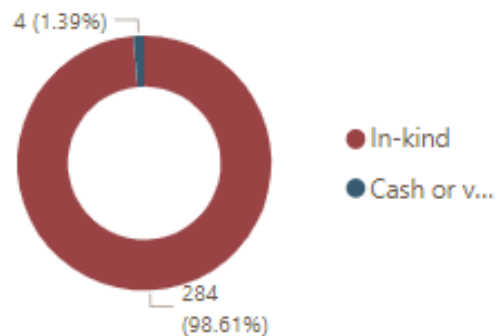
137K

people who have received clothing assistance

3644

households whose interior security and protection has been improved

Modality



of HHs that received assistance to improve their interior living conditions



Situation overview

Coverage | Reach Living space

ActivityInfo

Next deadline for reporting: 7 April

230K

of households that have been supported with assistance for improved living space

135K

tents distributed

Modality



● In-kind

101 (100%)

of households that have been supported with assistance for improved living space



Shelter Sector Türkiye
ShelterCluster.org
Coordinating Humanitarian Shelter



Situation overview

Funding

- Under the [Turkiye Earthquake Flash Appeal 2023](#), the Shelter Sector response plan was budgeted at USD 246.6 million
- According to OCHA Financial Tracking Service (FTS) the [Shelter Sector response plan appeal](#) is **42.2%** funded (**USD 104.7 million**), which is a big increase in the last week but still leaving a considerable gap in resources to meet need.
- From the total funded, **USD 22,9 million (9.3%)** have already been made available to shelter actors.
- The remaining **USD 81,7 million (33.1%)** is to be still to be transferred, putting a considerable pressure on recipient shelter actors to implement their programmed activities within the Flash Appeal (by 17 May 2023).



Situation overview

Gap Analysis

Considering the government relief to recovery pathway and the scale of need, we may see some understandable delays and gaps in assistance to:

- Those along the government relief to recovery pathway, potentially keeping **families in tents** (tent cities) **for a longer period than initially planned**.
- Those **self-settled in tents waiting to access formal accommodation arrangements** (tent cities / other government arrangements).
- Those **self-settled in tents unable or ineligible to access formal accommodation arrangements** (tent cities / other government arrangements)
- Those **self-settled in tents choosing to stay close to their damaged houses**, within their community or their networks of support.

Situation overview

Gap Analysis (continuing)

- Self-settled families in informal sites or close to their damaged houses, in urban, peri-urban and rural areas, will either choose to, or have no other option but, to remain where they are until assistance pathways available to them are clarified and accessible.
- Those falling outside the formal, government-supported population are emerging as a key issue of concern to most in the humanitarian community.
- Ongoing planning is being carried out strategically to monitor the needs of this vulnerable and homeless population, with the aim of providing them with necessary assistance.
- This will require a shift from bulk assistance in kind to improved programming and informed and realistic targeting towards priorities.



Hatay Hub

Location: 36.256745, 36.2073

UNDAC team leader	Ali Gokpinar	0537 285 7460	+1 646-875-3668 (whatsapp)	Hatay@undac.org
Hatay Shelter Sector Focal Point	Noor Alhashimi	+90 538 926 13 15		NOALHASHIMI@iom.int
AFAD	Güray KARAKAYA	0533 135 81 45		
	Mr. Ahmet Turunc	+90 542 236 60 10		Ahmet.turunc@afad.gov.tr
Hatay Shelter sector meeting	Thursday 9.30am in UNDAC Hatay Hub Location: 36.256745, 36.2073 and online (provided each week on Whatsapp shelter chat)			
Hatay Intersectoral meeting	Check OCHA calendar https://teamup.com/ksau2n73iupkck5ftk			
WhatsApp chat for Shelter Sector coordination	https://chat.whatsapp.com/GvgMSFOTABE4IA1wwwJMP1			
WhatsApp chat for Hatay Hub	Contact Hatay@undac.org			

Main shelter needs:

- Last week starting on Tuesday night till Thursday morning, some tents in both formal and informal sites were affected by the storm took place in Hatay. AFAD replaced damaged tents and provided extra tents in some locations.
- Joint sectoral visit was conducted in Hatay to assess the overall needs, and one of the main outcome was that some private entities are doing shelter response without sharing information with the shelter sector.
- Two partners will follow up with the local authorities about the regulations related to earthquake victims under different civilian statues (refugees, foreigners and Syrian under Temporary protection).
- **Lates news:** PMM has been designated by MoI to coordinate the distribution of tents to the individuals in need of and demanded tents. The tents will be set up in informal sites to help individual households. PMM needs the support of NGOs on setting up the tents in Antakya and Defne districts of Hatay should there be a need for extra human force. Expression of interest can be provided [through this link](#). (ideally by COB today).

Adiyaman Hub

Location: 37.76002393849582, 38.26398141045505

UNDAC team leader	Fotini Rantsiou	0539 220 7239	+90 538 097 83 92	Adiyaman@undac.org
Adiyaman Shelter Sector Focal Point	Keisuke Kamiya	+90 535 700 8491	+818023880019	kkamiya@iom.int
	Marcin Pius	0539 897 22 59	+61 419 186 536	Sheltersectorim2.tur@ifrc.org
AFAD	Serbulent Yilmaz	0544 685 40 35		
	Bekir Koray TARHAN	0555 780 66 77		
Adiyaman Shelter sector meeting	Wednesday 1600 in Adiyaman UNDAC base (37.76002393849582, 38.26398141045505) and online.			
Adiyaman Intersectoral meeting	Check OCHA calendar https://teamup.com/ksau2n73iupkck5ftk			

- Meeting will be held with AFAD to clarify the approach towards infrastructure investments done in the informal settlements by UN/NGOs and the possibility/risk of the settlements being seen as long-term/formal settlements.
- Informal settlements established on privately owned land: AFAD plan is to move the people to the permanent houses within 12 months. No landowner issues are currently known to AFAD.
- Timeline on moving people to the formal camps/container settlement is not defined yet.
- According to AFAD in Adiyaman there are no current needs with regards to NFIs apart from WASH infrastructure such as toilets, showers, and water tanks in some locations (for formal sites).
- AFAD has a warehouse operational in Adiyaman where relief items can be received and distributed.

Updates from Government (AFAD):

Tent Distribution	No. of Settlements	No. of Tents	No. of People
In the city Centre	20	3 503	14 442
Individual Tents	33 Neighbourhoods/ Villages	39 509	158 036
In the Districts	7 Districts	39 993	159 924
Total		82 993	332 402



Shelter Sector Türkiye
ShelterCluster.org
Coordinating Humanitarian Shelter



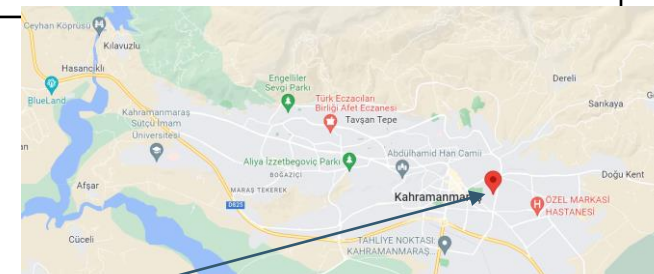
Kahramanmaras Hub

Location: 37.50828002185999, 36.99262638303116

UNDAC team leader	Ekin Ozbakkaloglu	0539 220 8266	+66 61 415 1140	Kahramanmaras@undac.org
Maras and Antep Shelter Sector Focal Point	Marcin Pius	+90 539 897 22 59	+61 419 186 536	Sheltersectorim2.tur@ifrc.org
AFAD	Ceyda Satilmis			ceydasatilmis34@gmail.com
Maras Shelter sector meeting	Monday 10am in UNDAC Maras Hub (see location above) and online (provided each week on Whatsapp shelter chat).			
Maras Intersectoral meeting	Check OCHA calendar https://teamup.com/ksau2n73iupkck5ftk			
Maras google drive	K-Maras Information - EXTERNAL - Google Drive			
WhatsApp chat for Maras Hub coordination	Please contact Maras Hub to be added Kahramanmaras@undac.org			
WhatsApp chat for Shelter sector in Hatay Hub	https://chat.whatsapp.com/CfTKGyv9YeGJFojh14q9vh			

Main shelter needs:

- Government (Army and municipality in Maras) replacing makeshift shelters in informal sites with proper tents – 500 tents at one site. TSS will offer site planning assistance for current any future sites.
- Reports of AFAD registering people in informal sites (IOM report).
- Many (often elderly) seemed to believe the government will provide them with containers and/or support for reconstruction of homes, but many are unwilling to move to container sites – and it looks like it would be impossible to provide containers until debris is removed.
- Shelter and site support, in particular NFIs is still required.
- Additional tents still needed; in Goksun area some indicated that they will not bring families back to the area until they get a container in situ (near their dwelling).



Malatya Hub

Location: 38.34933902563058, 38.19972007532573

UNDAC team leader	Agnes Palacio	0536 772 8918	+44 7889 364595	Malatya@undac.org
Malatya Shelter Sector Focal Point	Keisuke Kamiya	+90 535 700 8491	+818023880019	kkamiya@iom.int
AFAD	Gökhan AKPINAR	+90 538 277 37 34		
Malatya Shelter sector meeting	Tuesday, time TBA , location: in Malatya Movenpick Hotel and online			
Malatya Intersectoral meeting	Check OCHA calendar https://teamup.com/ksau2n73iupkck5ftk			
Malatya google drive	https://drive.google.com/drive/folders/1dsRS0bArGkhfeovh8EUD6ltBmegAsD9W?usp=sharing			
WhatsApp chat for Malatya Hub coordination	Please contact Malatya Hub to be added malatya@undac.org			

- **Urban districts:** shelter needs in formal sites are covered by AFAD and authorities, yet improvement of tents are seen as necessary action as people are making effort to put tent extension and shaded space tents. Pallets are being distributed in formal sites complementing government effort. Sector partners can spot gaps and providing support in coordination with managing authorities.



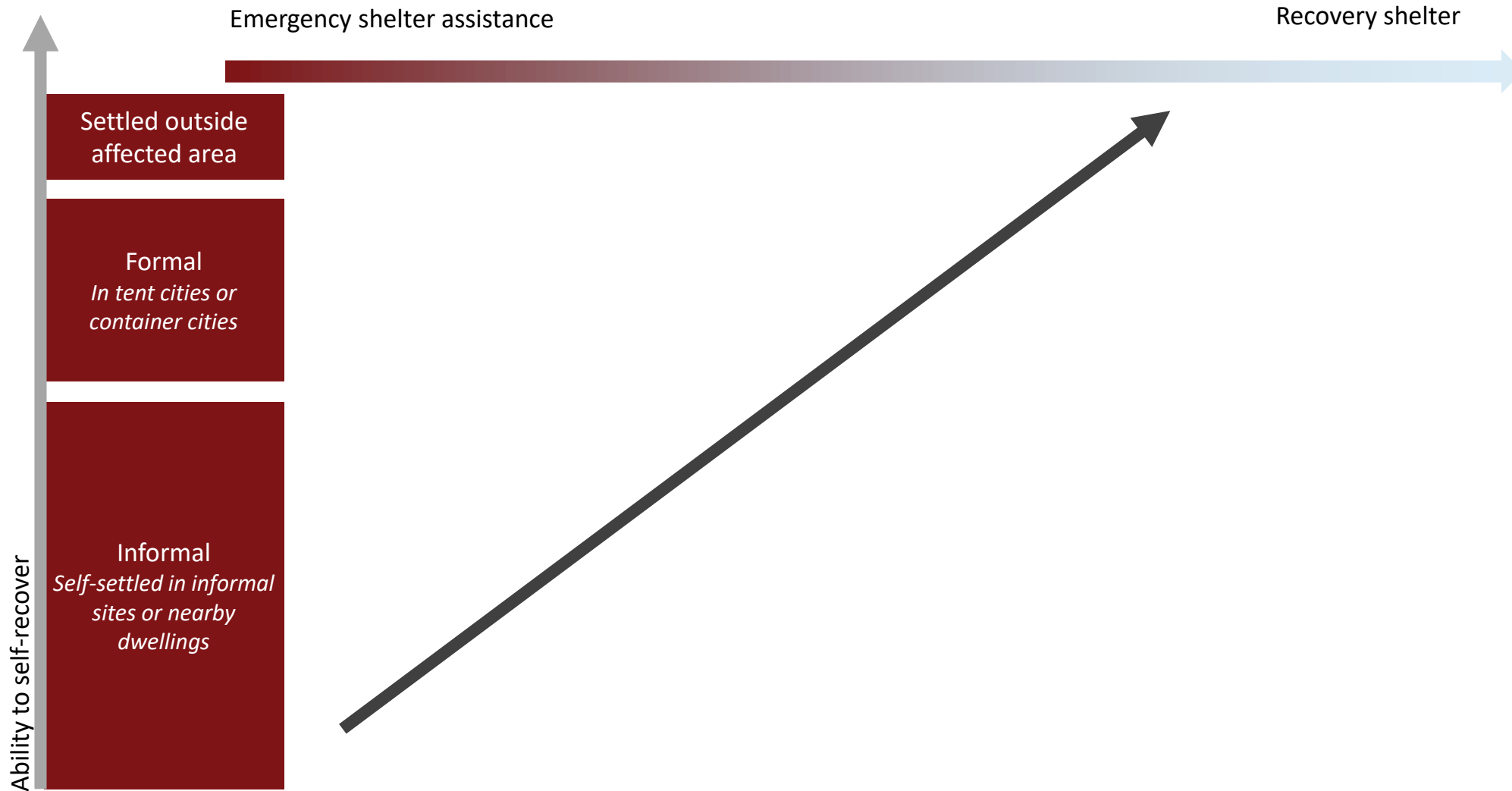
People are improvising external space in formal settlement in Malatya (courtesy UNHCR)

- **Remote districts:** site condition in these sites are worse than formal sites in urban districts. Humanitarian efforts should address needs until shifting to container cities.
- **Rural districts:** rural neighbourhoods, houses are collapsed/damaged in various levels as majority of rural house are built by people. People are staying in or next to damaged houses (in tents) waiting to have containers at their own land or to have permanent house to be (re)constructed. Humanitarian support to bridge recovery stages are critical, especially coping strategy during winter months. It is essential to provoke build back safer/stronger principal in the recovery.

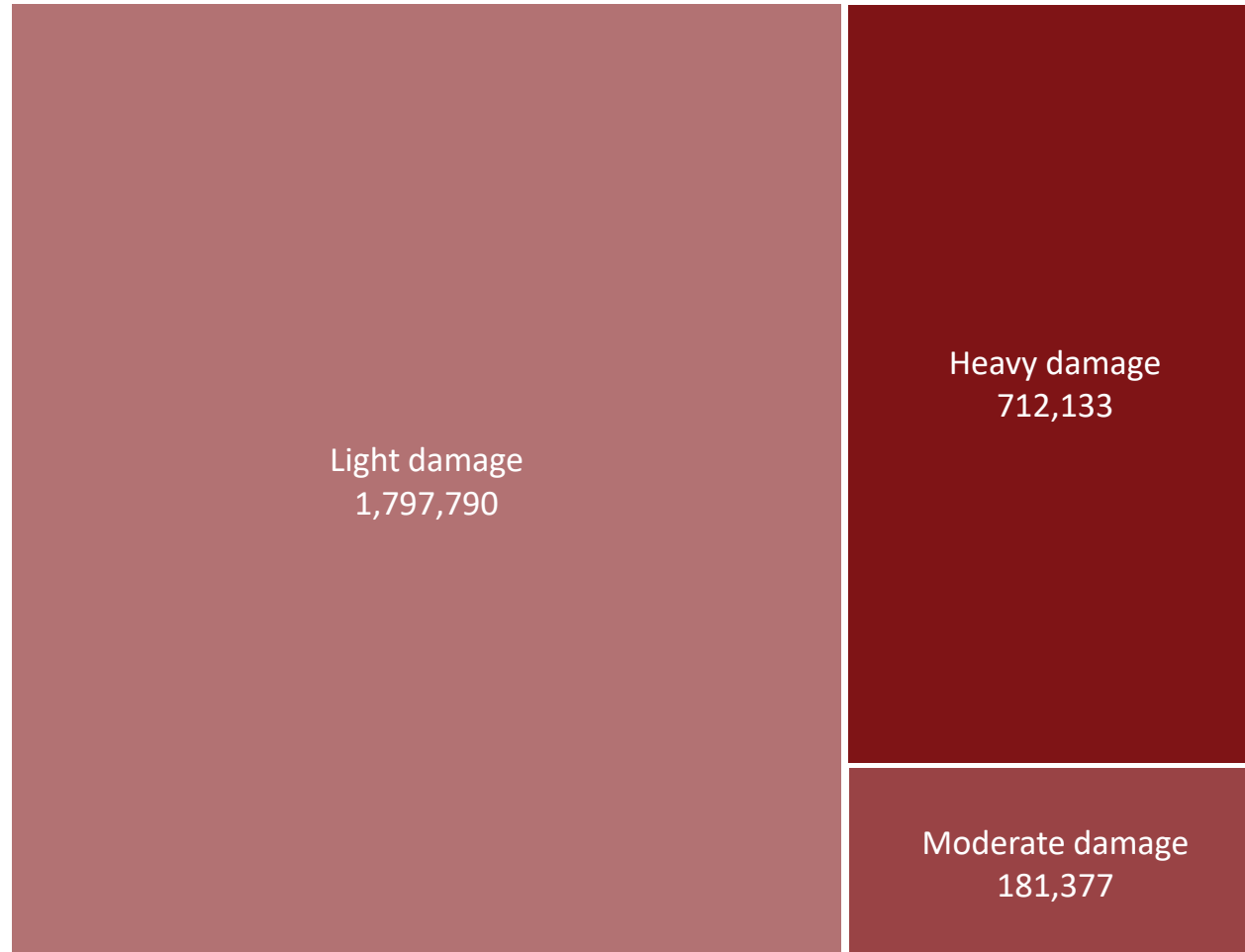
Technical Coordination I TWiG Update

- A draft '**Shading Kit**' has been produced. The TWiG (Friday 7th) will develop this further, aiming to get it ratified and distributed.
- Draft version of '**Guidelines Supporting Return to Light and No Damage Dwellings**' has been produced by the TWiG.
- Currently with a sub-group for comment before being shared with wider group for further input

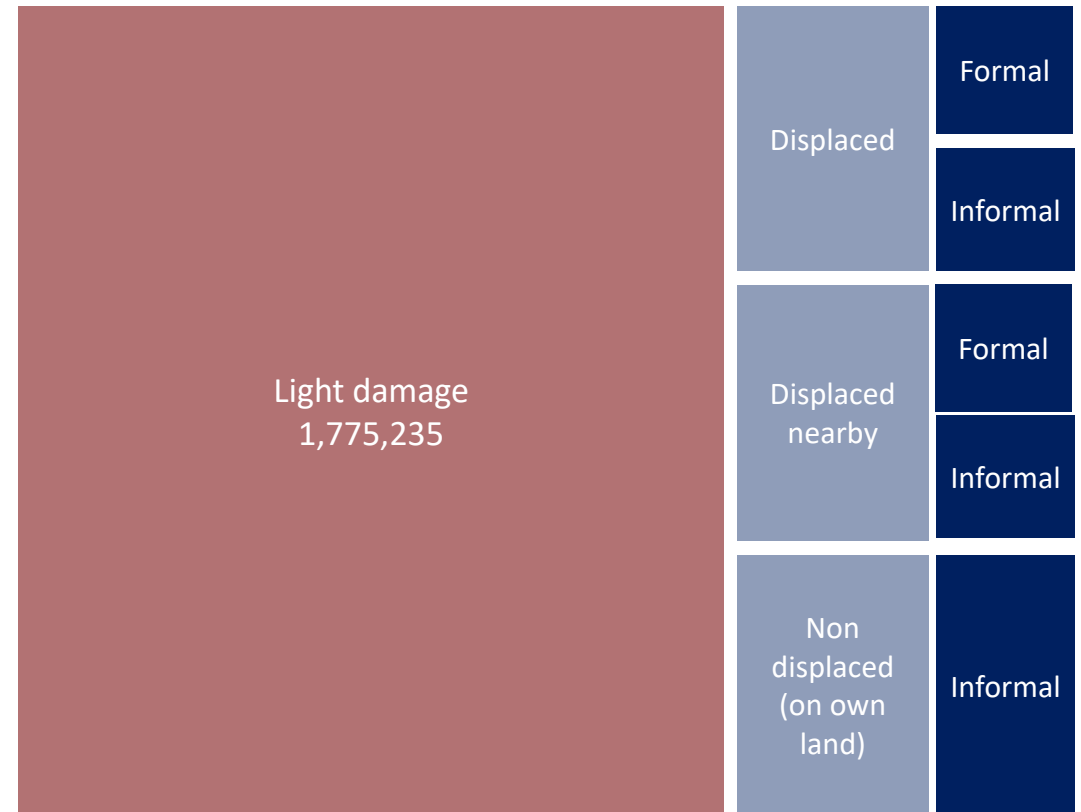
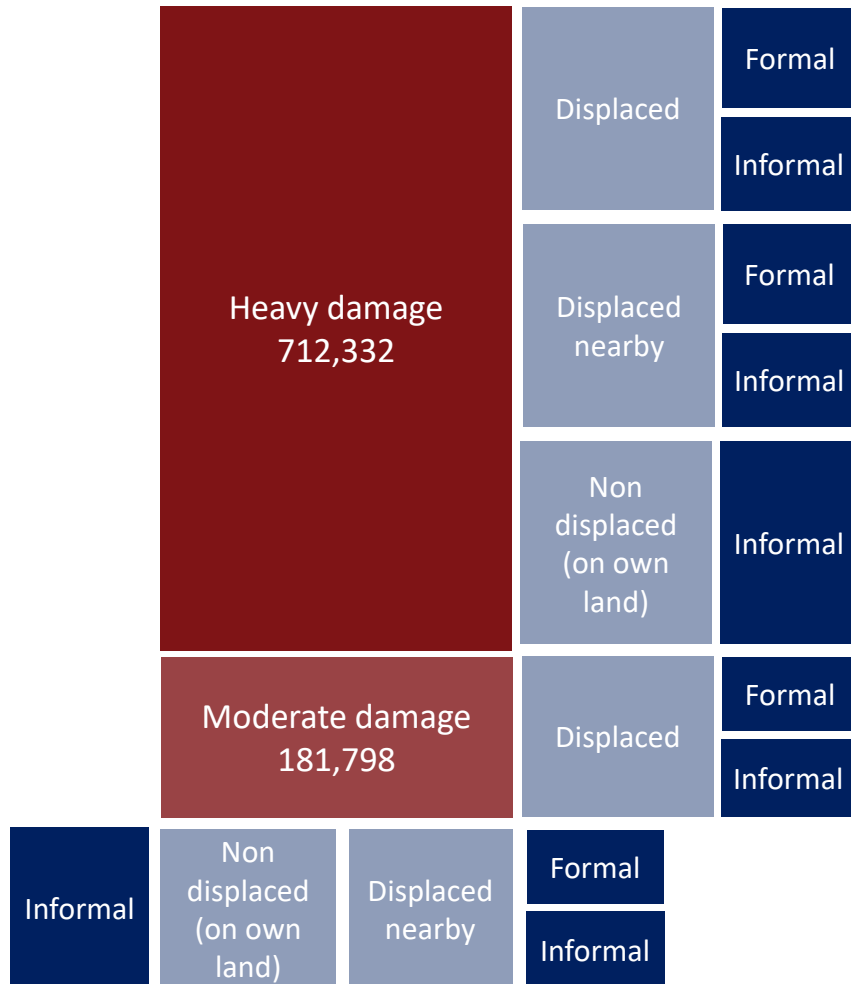
Strategic Priorities



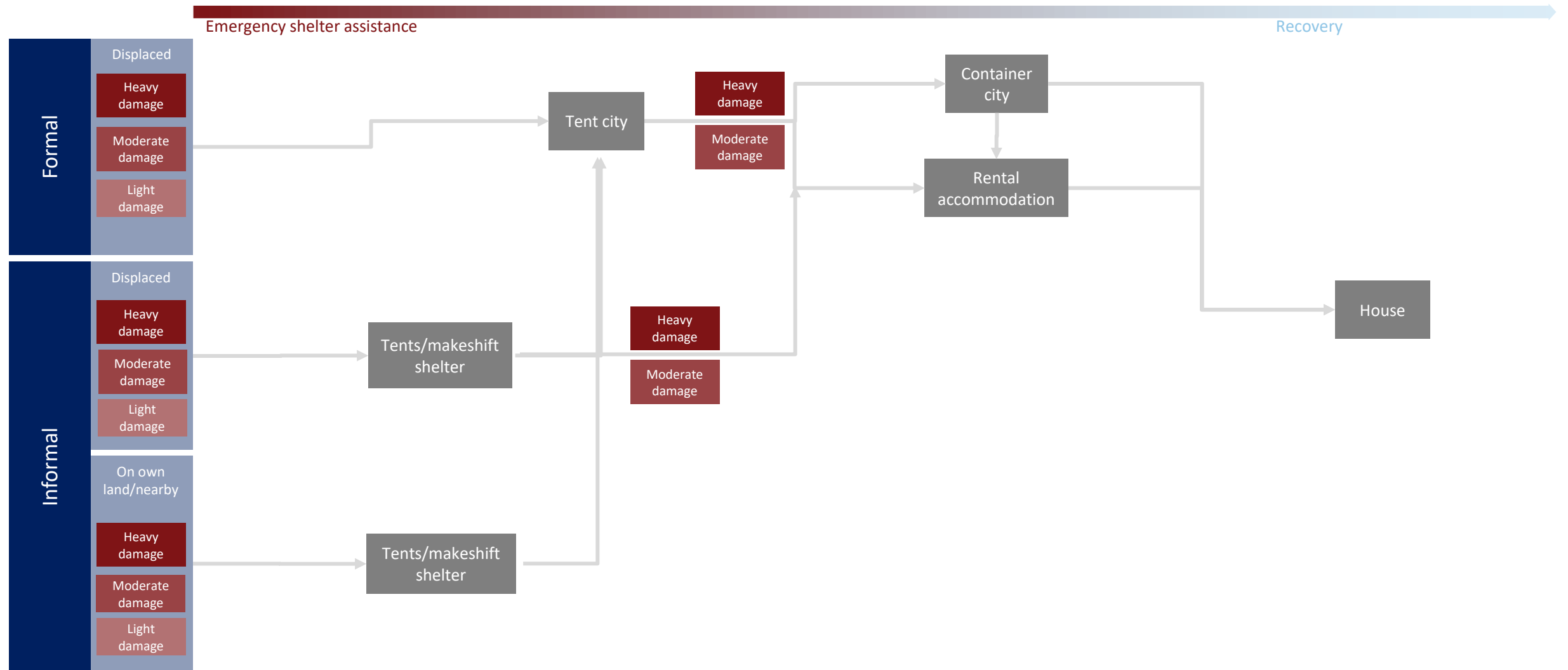
Who is in need?



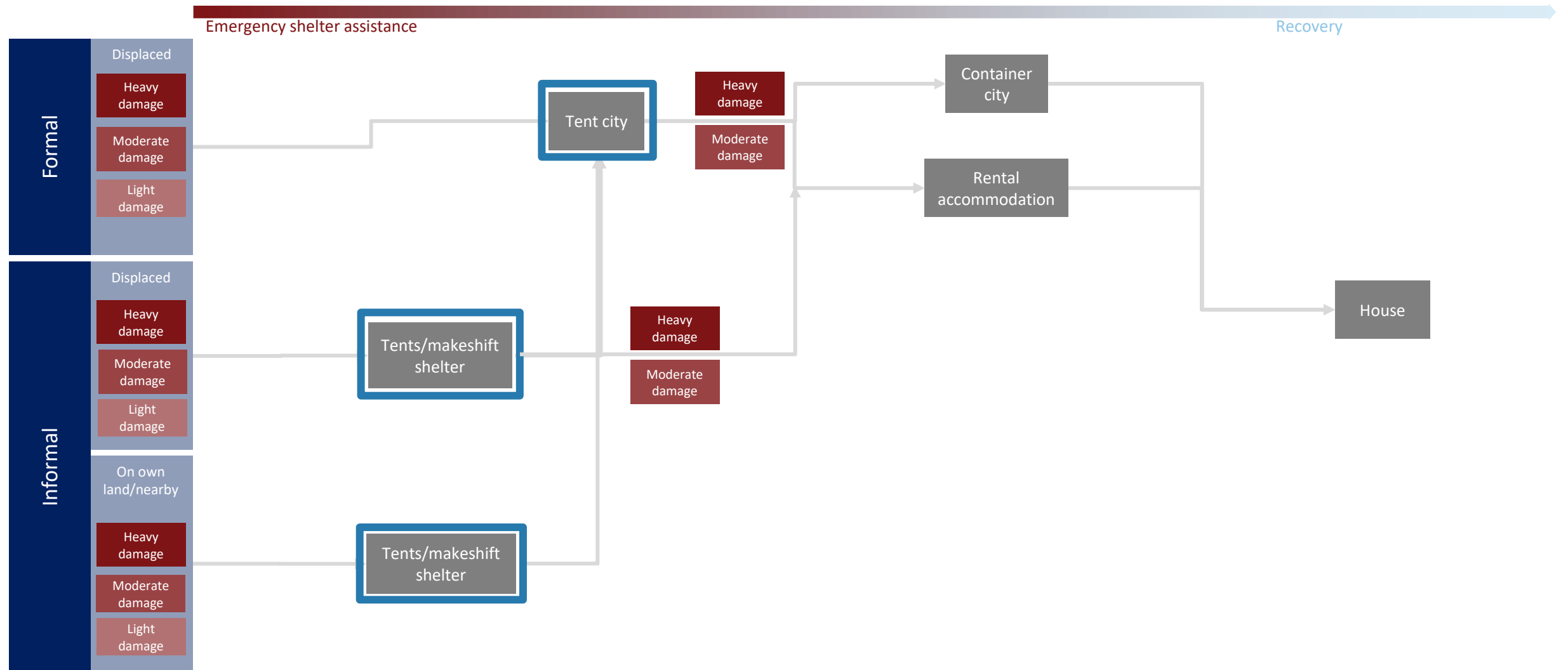
And where are they?



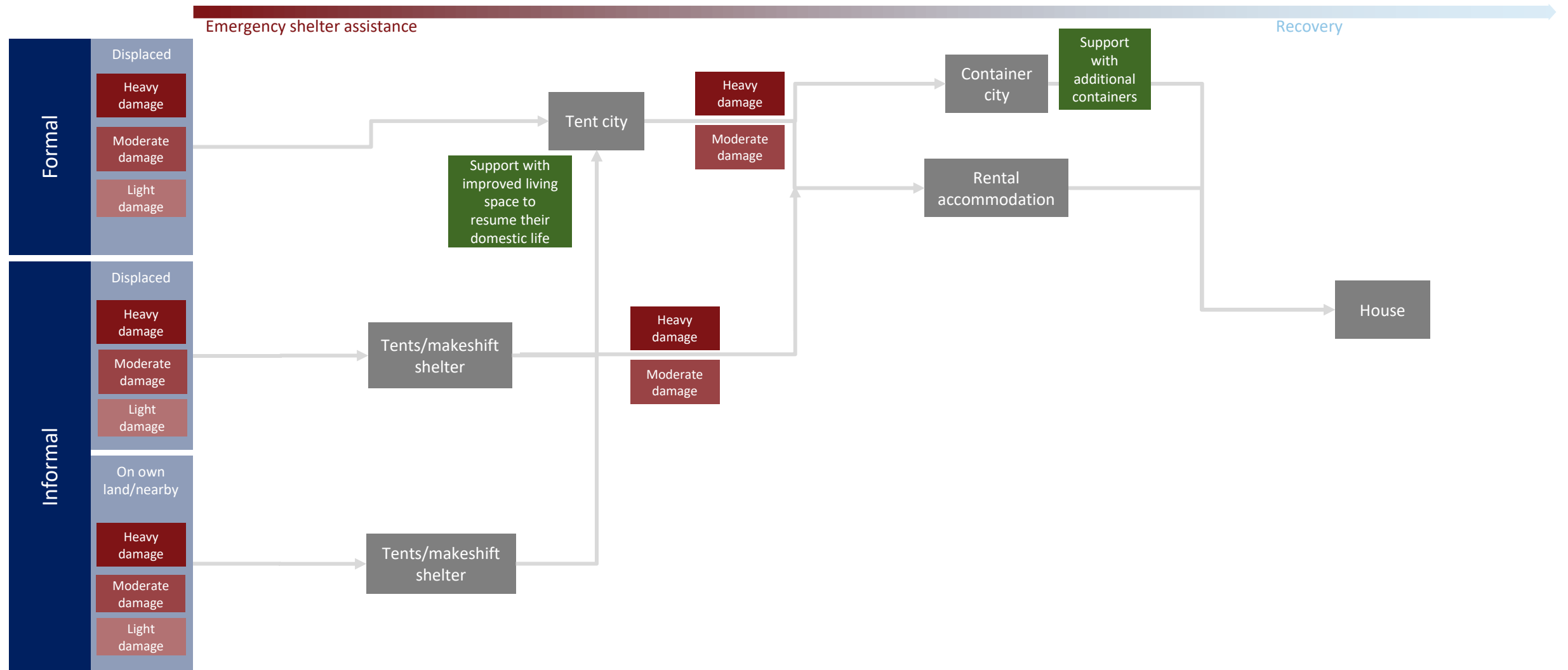
What support is on offer?



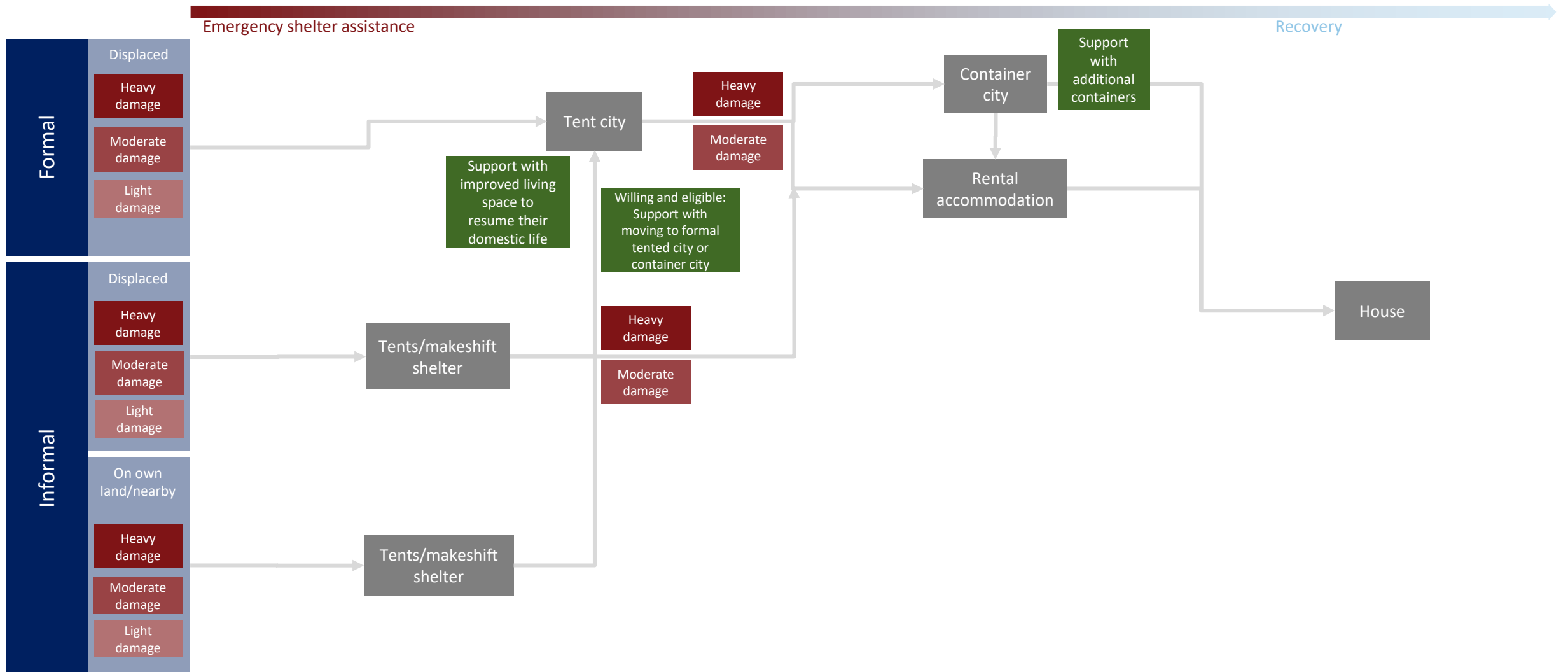
Who do we focus on?



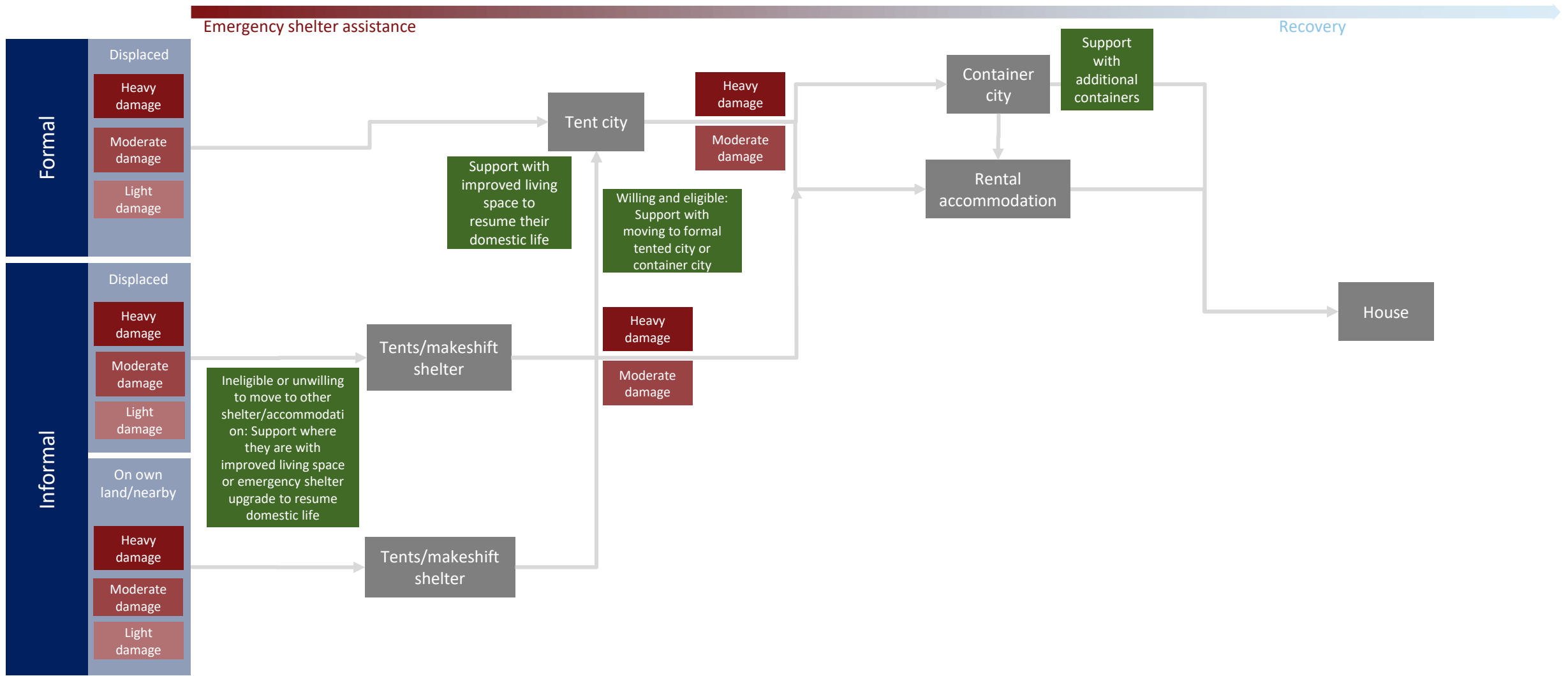
How can we complement the government support to those in the formal pathway?



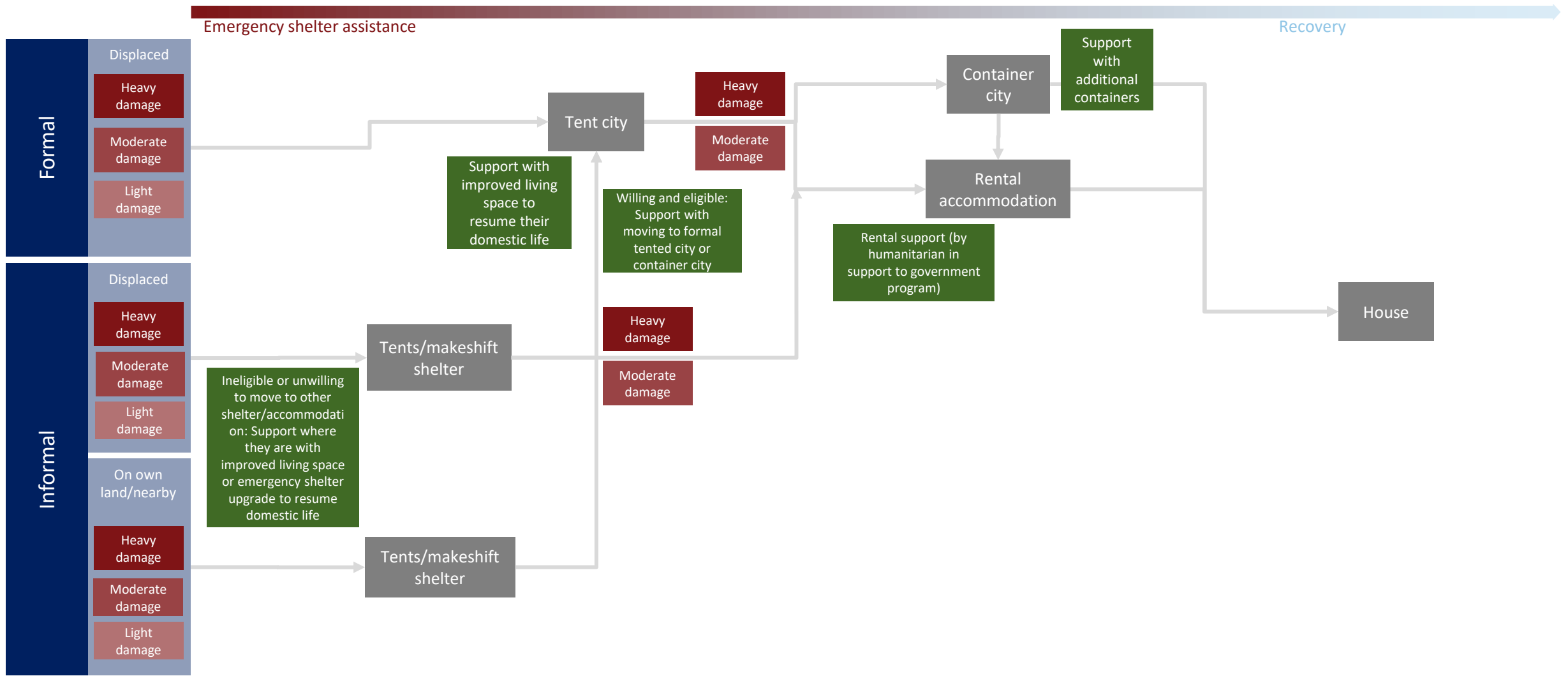
How can we support those in the informal pathway?



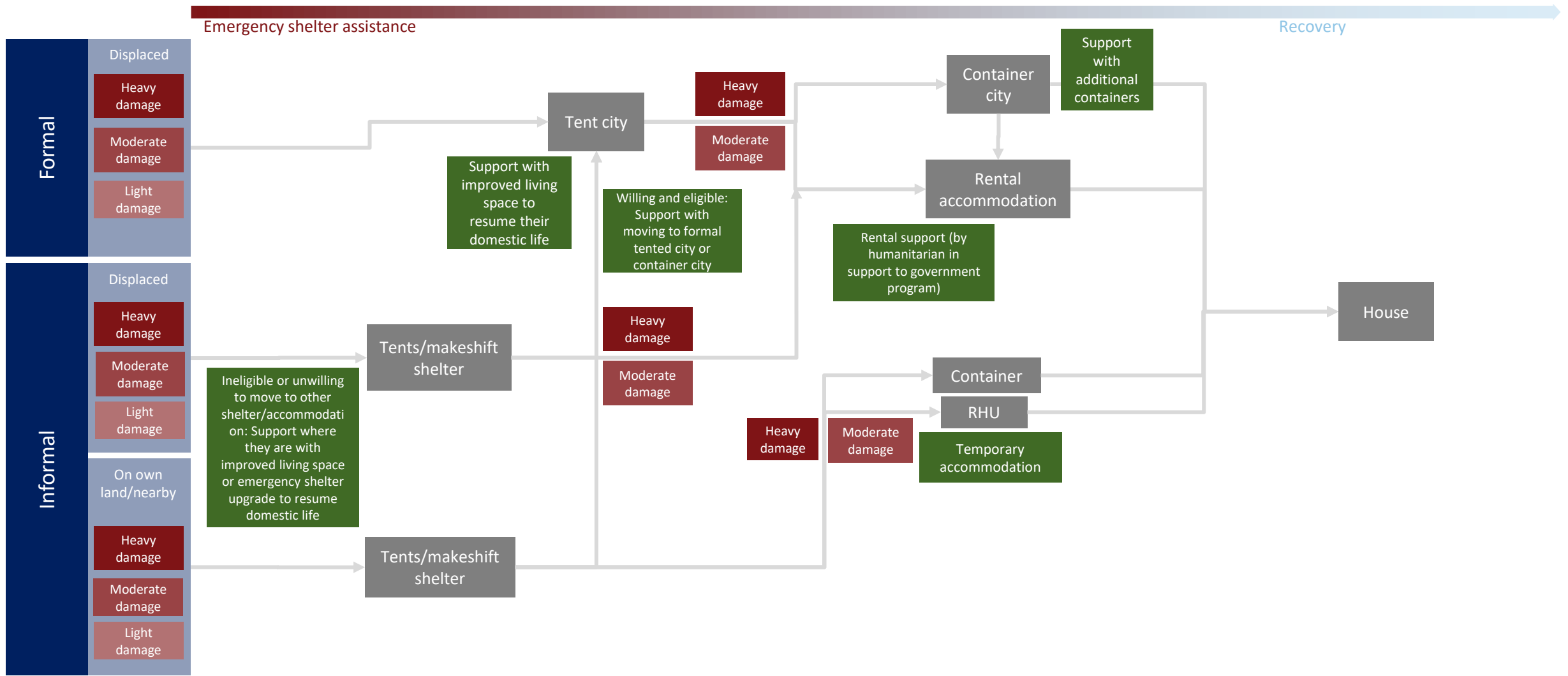
How can we support those in the informal pathway?



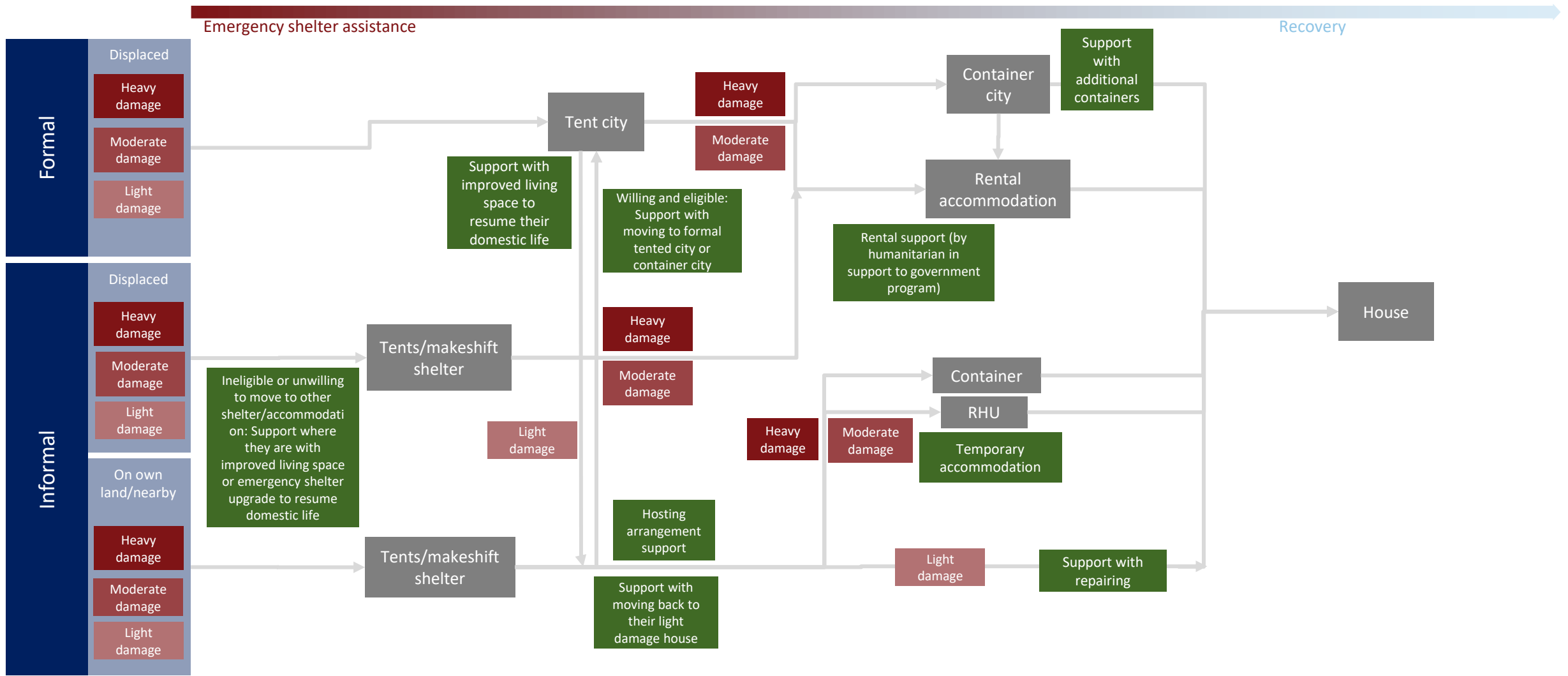
How can we support those in the informal pathway?



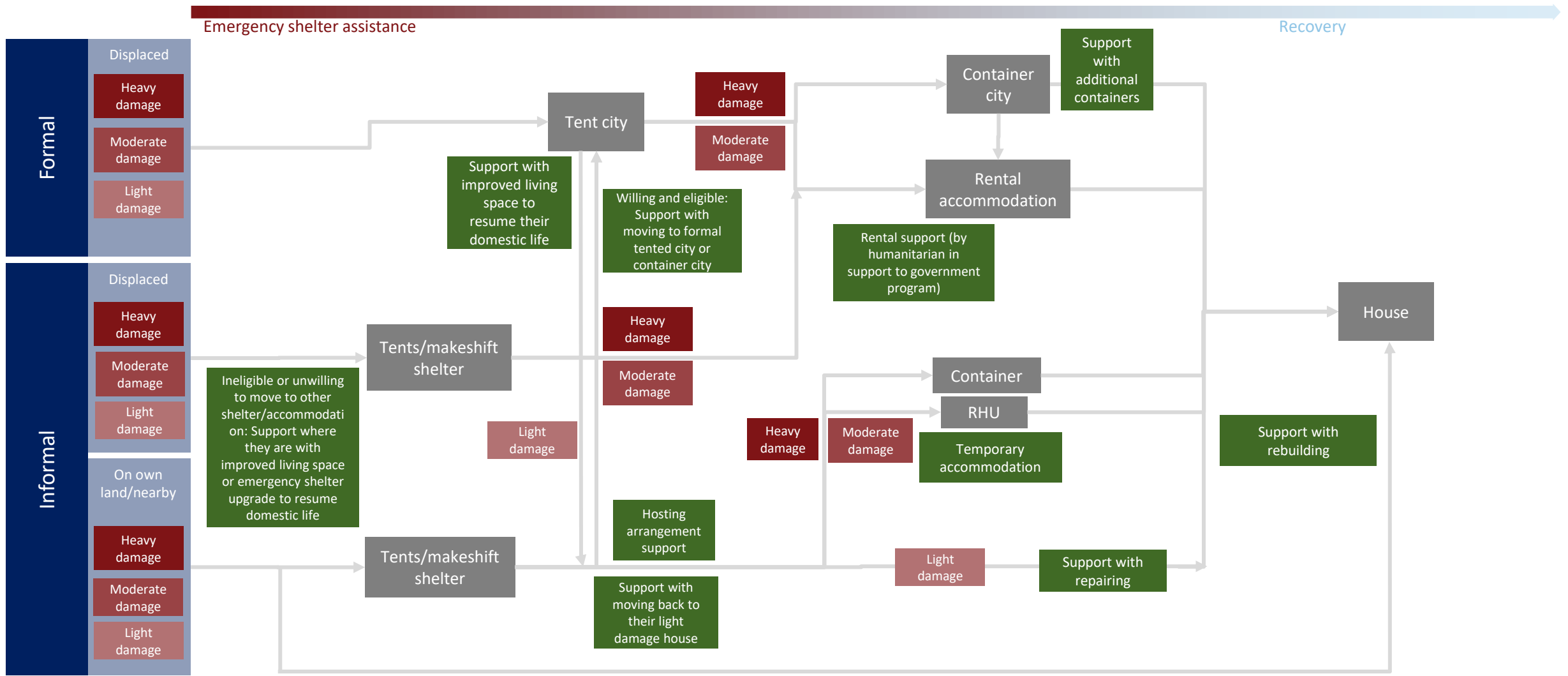
How can we support those in the informal pathway?



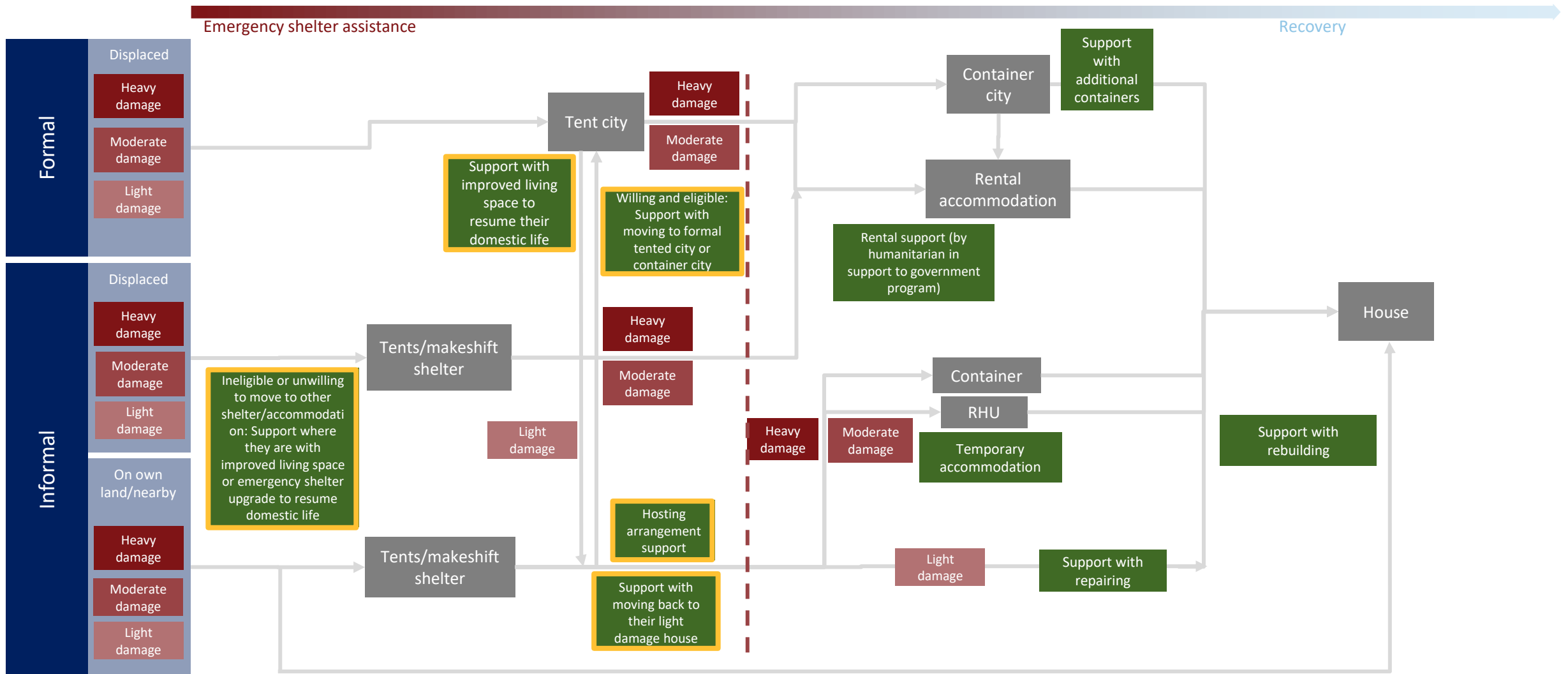
How can we support those in the informal pathway?



How can we support those in the informal pathway?



How can we support those in the informal pathway?



**Please share your
feedback at:**

[Shelter Sector Türkiye post
meeting survey](#)

