



PALESTINE
SHELTER CLUSTER

Coordinating Humanitarian Shelter and Settlements

NATIONAL SHELTER CLUSTER MEETING

07 Aug 2024

AGENDA

- Introductions
- Gaza Updates
- National Updates
- WB Updates
- AOB

INTRODUCTIONS

David Dalgado – covering National Coordinator over the summer.

Alison Ely – National Coordinator

coord2.palestine@sheltercluster.org

Fadi Shamisti – West Bank Coordinator

coord1.palestine@sheltercluster.org

Iyad Abu Hammam – Gaza Coordinator

coord.gaza@sheltercluster.org

Mohammad Aklouk – IMO

im1.palestine@sheltercluster.org

Leandro Fernandez-Jardon – currently in Gaza

Techco.Palestine@sheltercluster.org

NEXT MEETINGS

National Shelter Cluster Meeting (Online)

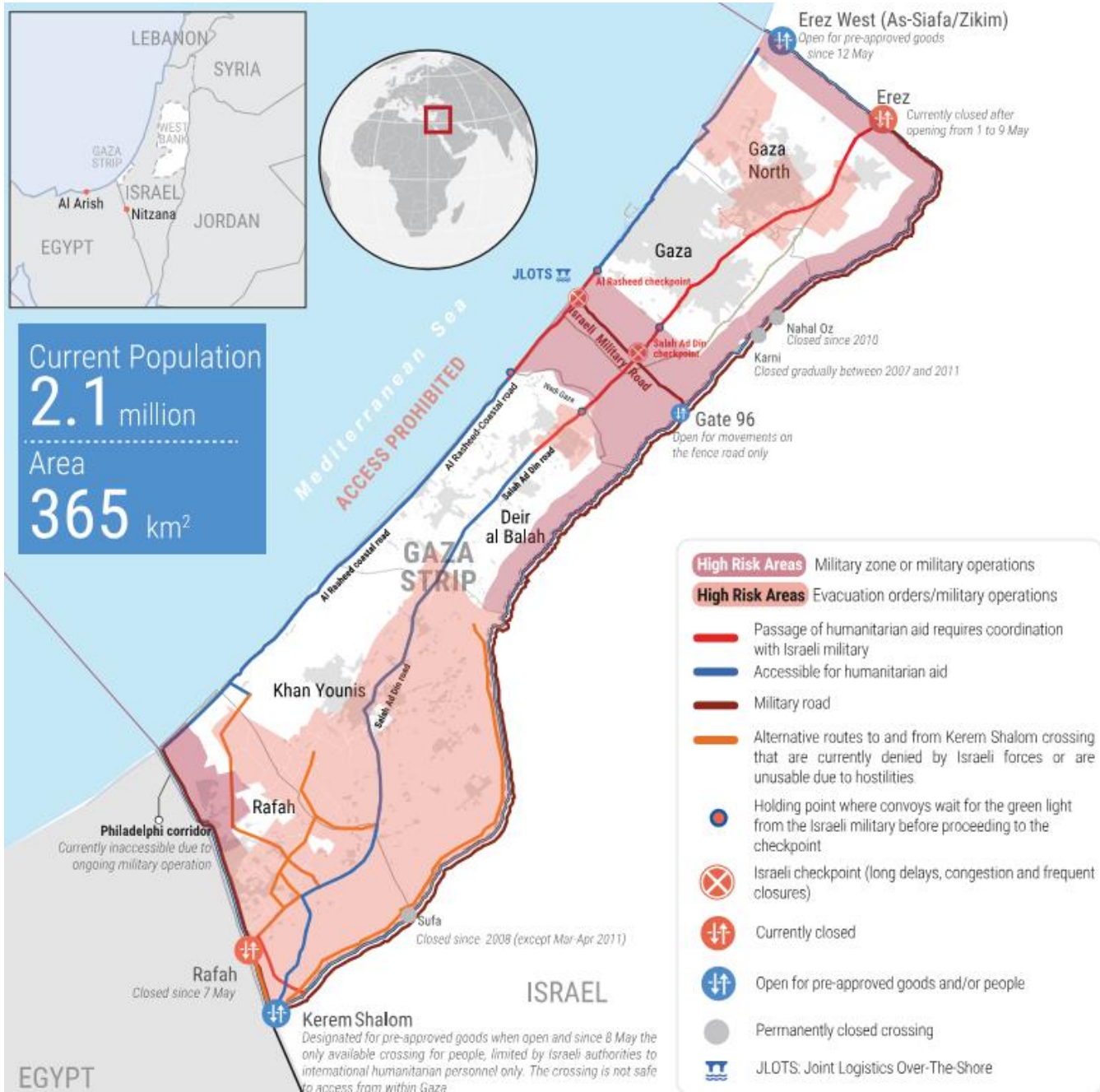
Wednesday 21 August, 10:30 – 12:00

West Bank Shelter Cluster Meeting (Online)

Wednesday 11 September, 10:00 – 11:30

Gaza Shelter Cluster meeting (In person)

Wednesday 7 August, 13:00 – 14:30, OCHA GH Deir Al Balah



MAP TO AID DISCUSSION OF ACCESS CONSTRAINTS

<https://www.ochaopt.org/content/reported-impact-snapshot-gaza-strip-31-july-2024>

GAZA UPDATES

Main Challenges

- Huge logistical constraints, with few crossings & only a small number of trucks allowed to cross.
- Zikim cross in the north is closed. Erez is the new entry point.
- In the south the entry of goods is very limited, only permitted through Kerem Shalom (and few trucks per week through the Fenced Road)
- In the last week the majority of partners who have tried to bring items in have reported their trucks carrying Shelter and NFI items have been looted. Very very few partners have been able to receive Shelter NFI items in the last week. The looting is because of the extreme desperation of people.
- The movement of items between southern and northern Gaza crossing Wadi Gaza is very limited to non-existent.

GAZA UPDATES

Main Challenges (continued)

- Another problem is the restriction on the movement of humanitarian actors. Employees of the Logistics Cluster receive movement authorizations late, which greatly limits the working hours at the Kerem Shalom logistics base. Similarly, only a few trucks and drivers have authorization from Israel to operate, so the logistical response does not meet the needs.
- Partners also report restrictions due to inconsistent approvals by Israeli authorities. For example, one week rope might be approved with one organisation and another week with a different organisation not.
- More durable materials for repair and also framing materials for makeshift shelter are generally not being approved. People scavenge from debris, but there are also reports of empty apartments being broken into so that the furniture can be used for firewood for cooking.

GAZA UPDATES

- Between 22 July and 6 August, Shelter Cluster partners provided family tents to 327 families who were displaced from east to west Khanyounis or from parts of the Middle area to other locations following the recurrent evacuation orders issued by the Israeli military.
- Also in northern Gaza, partners provided 245 tents to a new IDP site in Jabalia, and 250 tents to IDP families returning to their damaged buildings, while preparations are ongoing to dispatch additional Tents and NFIs.
- In Deir al Balah, NGO partners provided shelter materials and NFIs to about 115 families who were recently displaced from northern Gaza.
- No clear data about shelter and NFI materials already in KS due to lack of access to the crossing by partners.
- Partners remain unable to implement a meaningful Shelter response due to the severe lack of shelter materials and NFIs in Gaza and non-functional markets.

GAZA UPDATES

- Gaza City and North Gaza ABC meeting priority needs: Tarpaulins, ropes, SOK, Cooking Energy, Winter Items
- No significant movements seen from the new evacuation orders issued on the 4th and 5th of August.
- UNICEF and UNWRA are working to decongest 3 hospitals as part of a pilot in Southern Gaza. This is about trying to increase critical infrastructure, and involves 600 tents being used to support households to leave and with direction to sites that have some capacity. Can only happen when there is a plan to avoid reoccupation.

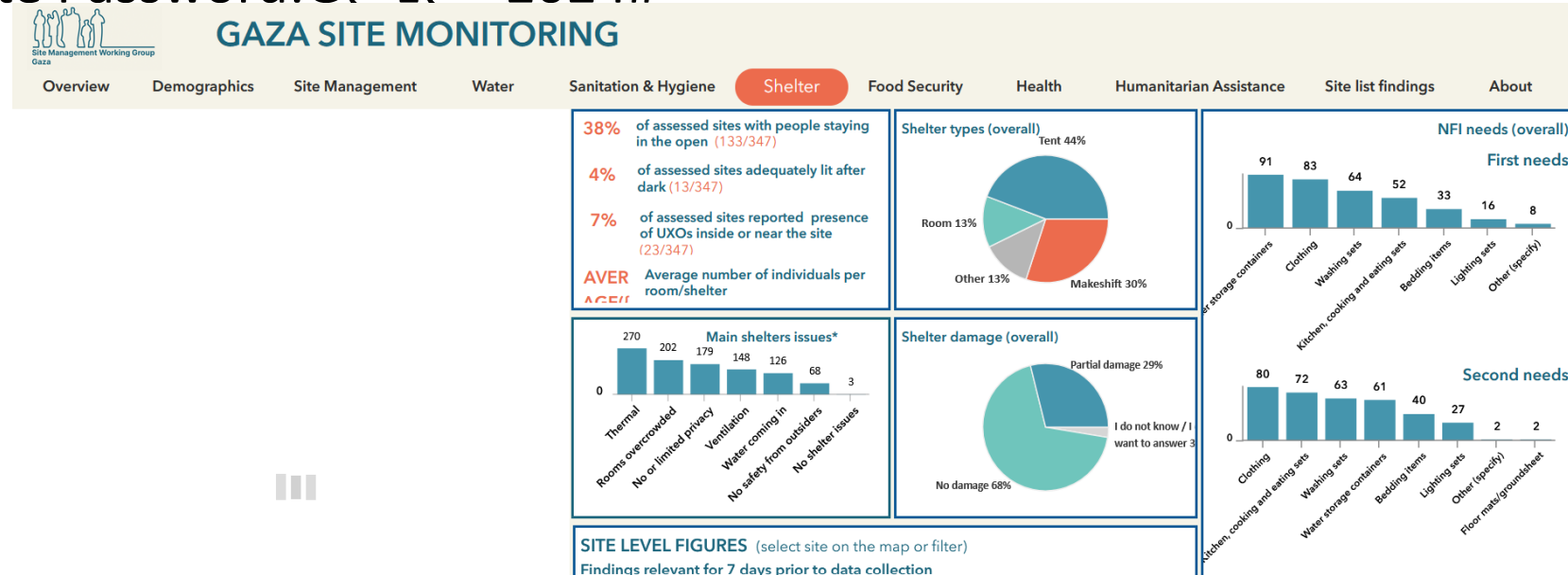
NATIONAL UPDATES

- We have received instructions from the Humanitarian Coordinator to begin the consultation process for the [First Standard Allocation](#) of the oPt Humanitarian Fund for 2024. - 30million USD available.
- IOM Common Pipeline – Partners are applying and some going through vetting process (related to one donor). There will be other donors, partners should still register interest even if they can't submit currently to vetting.
- COGAT Tents – please let the Shelter Cluster Palestine coordination team know if you have been contacted.
- Winter planning – caseload numbers

IM UPDATE

- New 5W coming – to be excel based. Will ask for information about planned activities, pipelines, and stockpiles.
- Reminder of Gaza Site Monitoring Dashboard on behalf of the Site management Working Group - <https://experience.arcgis.com/experience/dd336d0c9678440890b580017d62bf44>.
User name:smwg_gaza_site Password:G@z@ 2024#

- Partner presence -



GAZA STRIP: MIDDLE AREA ACTORS AND ACTIVITIES

Programme Presence - Who does What & Where (3Ws)

As of 30 June 2024



AR RASHEED
1 0 0 0 3 0 2 0 1

AAH, AIOCP, Frieda, IMC, IRW, MA'AN, Mdm-France, MedGlobal, NRC, OXFAM, PUI, WeWorld

AS SAMAH
0 0 0 0 0 0 0 0 2

IRW, UNRWA

AS SAHABAH
0 0 0 0 2 5 0 0 1

AAH, AIOCP, IDRF, IRW, PMRS, SI, UK-MED, WeWorld

TAL AZ-ZUHOUR
2 0 0 0 1 0 0 2 1

AAH, CMBM, G.D.D, IRW, PMRS, PSCF, WeWorld, WFP

AS SALAH
0 0 0 0 1 5 0 4 2

AAH, ACF, FAFD, IRW, PMRS, SCI, SI, UNICEF, UNRWA, WeWorld, WFP

AL BASSA
3 1 3 1 3 6 1 6 3

AAH, ACF, ACHA, AHCA, CCP Japan, CMBM, CWLRCP, FAFD, Frieda, G.D.D, IMC, IRW, MedGlobal, PUI, SCI, SI, UNICEF, UNRWA, WeWorld, WFP

DEIR AL BALAH CAMP
3 2 3 2 2 3 1 6 4

AAH, ACF, ACFADR, AEI, AHCA, AISHA, ANERA, ASDC, CCP Japan, CMBM, CWLRCP, Frieda, IRW, MSF Spain, Project HOPE, UNICEF, UNRWA, WeWorld, WFP

AS SALAM
0 0 1 0 0 0 0 0 0

AAH, AHCA, ANERA, CARE, Frieda, IRW, MSF-Belgium, PMRS, PSCF, SCI, UNRWA, WeWorld

AL BRUK
1 0 2 0 1 2 0 2 4

AAH, ACHA, ACTED, AHCA, CCP Japan, CFTA, CMBM, G.D.D, IRW, UNRWA, WFP

YAFU
1 0 1 0 1 4 0 5 2

AAH, ACF, AHCA, FAFD, Frieda, G.D.D, IRW, PCRF, Project

SALAH AD-DIN
0 1 0 1 0 0 0 2 2

ANERA, IRW, UNICEF, WFP

AL AMAL
1 0 0 0 1 2 0 0 1

Frieda, IRW, MoH, SI, WeWorld

AL AWDA
0 0 0 0 1 0 1 0 1

IRW, Mdm-France

AR RAHMEH
0 0 0 0 0 3 0 0 2

AAH, ACTED, CARE, IDRF, IRW

ANSAR
0 0 0 0 0 1 0 0 1

AAH, IRW

AR RASHEED
0 0 0 0 0 1 0 0 0

CARE

AS SIDDEQ
0 0 0 0 1 3 0 2 2

AAH, IRW, NRC, UNRWA, WeWorld, WFP

AL FAROUQ
0 0 0 0 0 0 0 0 2

IRW, UNRWA

AZ ZAWAYDA (NORTH)
1 1 1 2 0 0 1 4 8

AFSC, AISHA, ANERA, CMBM, GEM, IHH, IRW, MAAN, MECA, MedGlobal, OXFAM, UNICEF, UNRWA, WFP

AN NUSEIRAT
3 1 4 1 5 5 1 3 8

AAH, AEI, AFSC, AHCA, AIOCP, ANERA, AWDA, CCP Japan, CMBM, GEM, HI, IRW, MECA, MedGlobal, MoH, OXFAM, PARC, pfpfa, PMC, SCI, Shashat, UNICEF, UNRWA, WFP

AN NUSEIRAT CAMP
3 1 3 2 0 2 1 3 4

AEI, AHCA, ANERA, AWDA, CMBM, Frieda, IRW, MECA, SCI, Shashat, SI, UNICEF, UNRWA

AL BUREIJ CAMP
3 0 0 2 2 2 0 2 2

CMBM, Frieda, IRW, MoH, OXFAM, SCI, UNICEF, UNRWA

AL BUREIJ
0 0 2 0 0 0 1 0 3

ANERA, IRW, MECA, PARC, UNRWA, WAC

AL BUREIJ (EAST)
0 0 0 0 0 0 0 0 2

ANERA, IRW

AL MAGHAZI CAMP
2 0 0 0 1 2 0 4 3

ANERA, FAFD, Frieda, IMC, IRW, SCI, UNICEF, UNRWA, WHO

AL MAGHAZI
0 0 0 0 1 0 2 0 2

ANERA, IRW, MoH, PARC

AL BASATEEN
0 0 0 0 0 0 0 0 2

ANERA, IRW

AS SIDRA
0 0 0 0 0 0 0 0 1

IRW

AL-LOUH
1 0 0 0 0 1 0 0 1

IRW, SI, UNRWA

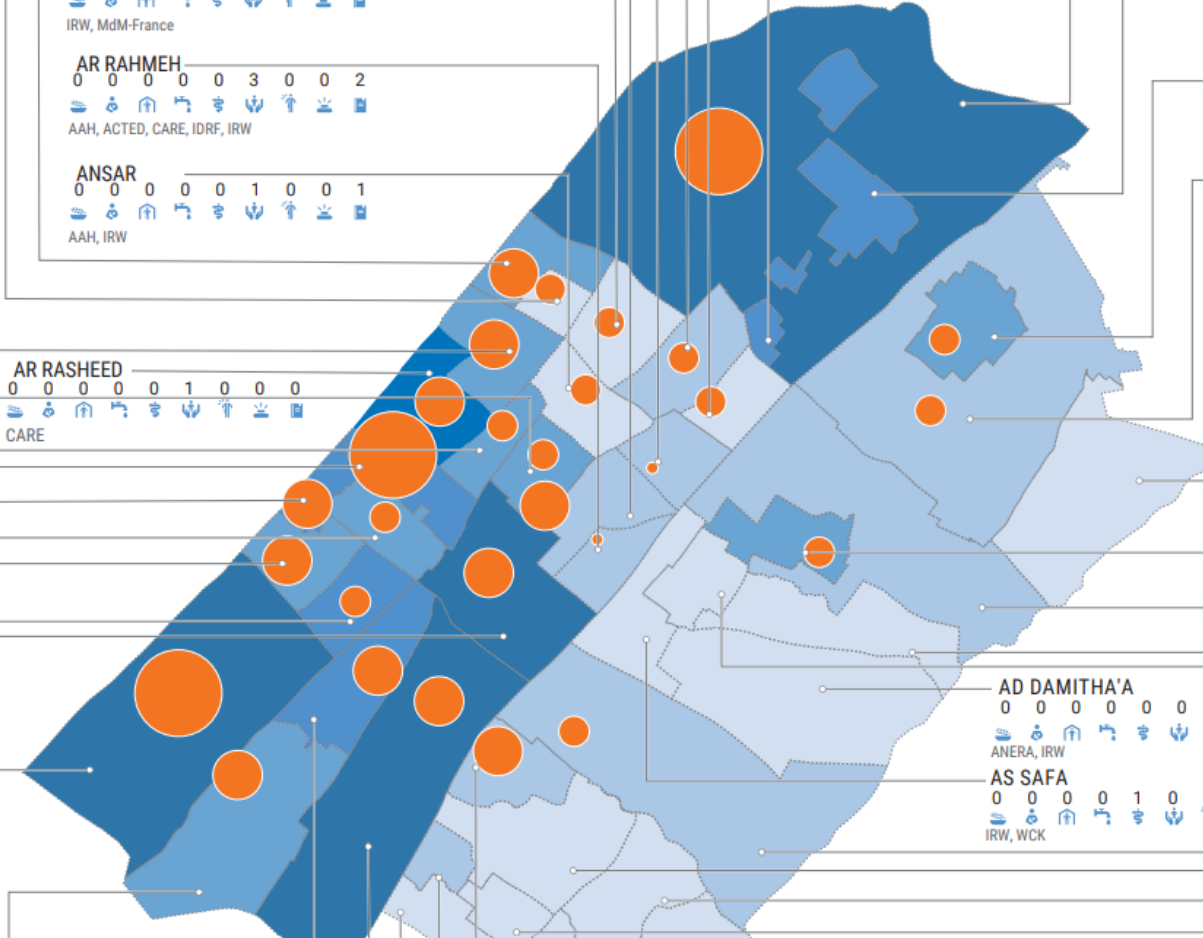
ABU AL-AJEEN
0 0 0 0 0 0 0 0 1

AD DAMITHA'A
0 0 0 0 0 0 0 0 1

ANERA, IRW

AS SAFA
0 0 0 0 1 0 0 0 1

IRW, WCK



PARTNERS BY AGENCY



PARTNERS BY CLUSTERS



WB UPDATES

- We initiated the discussion to harmonize the shelter cash responses in the West Bank. The first kickoff meeting will take place on Thursday, August 15th.
- Current discussions are focused on improving the referral system, monitoring uncovered gaps, and expanding the existing standardized responses in Area C to also cover Areas A and B.

NEAT+ training in October 2024.

Where: in Ramallah, Caesar hotel. Unfortunately, accommodation is not included.

Dates: 28 and 29 October: technical training (2 full days)

- ✓ Open to any profile: most likely to the ones that will lead / develop the NEAT+ screening tool in each organization. It can be a technical lead, MEL, project management, HoP, etc
- ✓ Shelter cluster (approx. 12 participants)

NEAT+ training in October 2024.

Dates: 30 and 31 October: ToT training (2 full days)

- Shelter cluster (TBC the final number of participants)
- Open to any profile: most likely to the ones that will lead the training components in each organization. It can be a technical lead, MEL, project management, HoP, etc
- Mandatory requirements to participate in the ToT session:
 - participate in the 2-day technical training the 29 and 29 October 2024
 - complete a 3-hour online training via the Kaya platform.
 - Committed from his / her line manager to conduct a series of trainings in the upcoming 6/12 months in the organization
- Registration, first come - first serve will be distributed around September 2024
- Links will be disseminated in due time

AOB



PALESTINE
SHELTER CLUSTER

Coordinating Humanitarian Shelter and Settlements