



**SUDAN  
SHELTER CLUSTER**

Coordinating Humanitarian Shelter and Settlements

# **Sudan Shelter and NFI Cluster National Meeting**

---

19 May 2025

## — AGENDA

1. Review of Action Points from the Previous Meeting
2. Strategic Updates from the National Cluster
3. Operational Context and Situation Updates
4. Presentation on the Cluster Cash and Voucher Assistance Guidelines
5. 2025 Flood Susceptibility Analysis: Planning Data by REACH
6. Presentation on an Innovative Emergency Shelter Solution by SORR
7. AOB

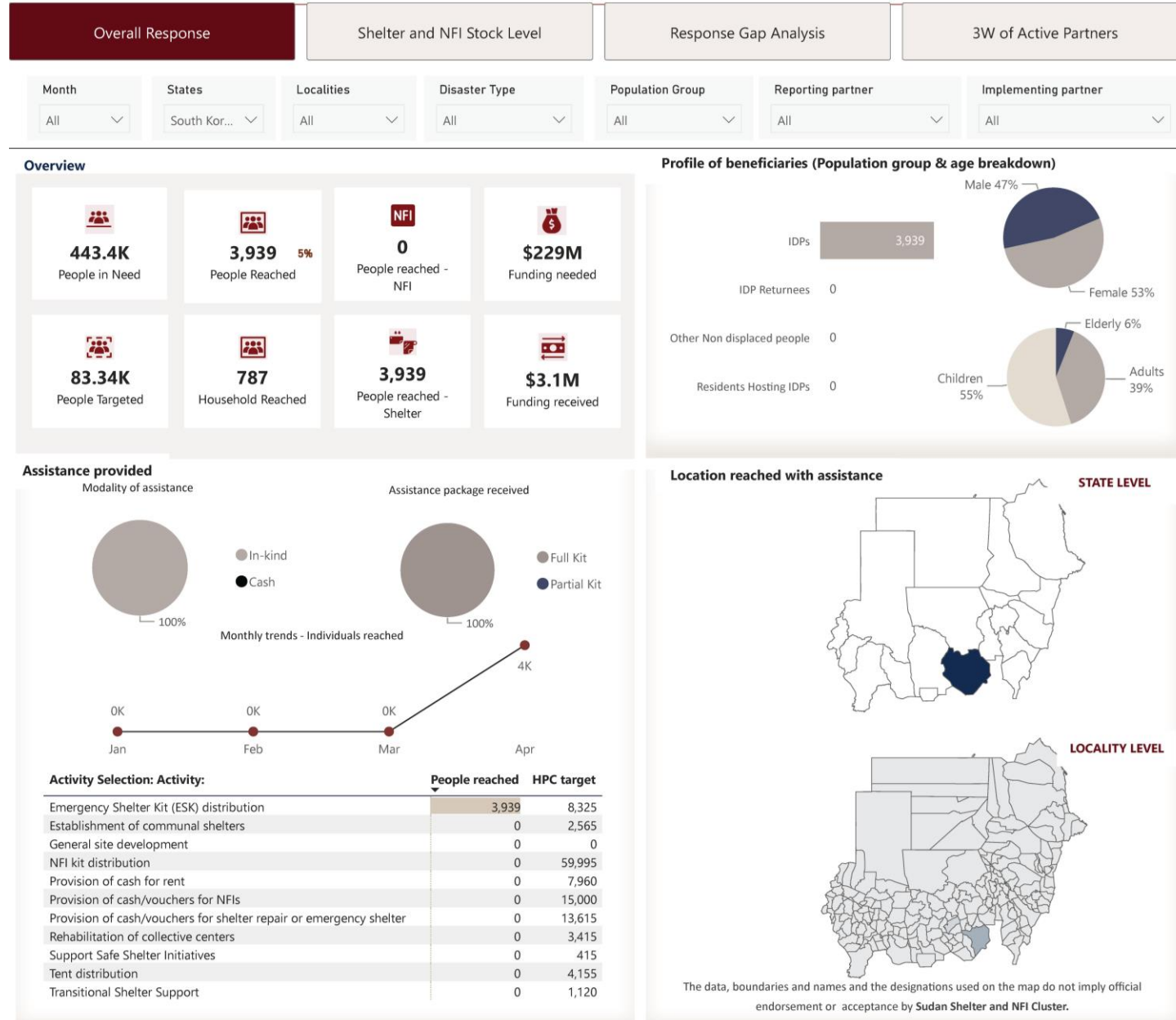
## REVIEW OF PREVIOUS MEETING ACTION POINTS

No.	Action Point	Status
1	Launch the cluster funding mapping system	Ongoing
2	Develop a preparedness and emergency response plan focusing in preparation for the upcoming rainy season	Ongoing
3	Prepare and share the cluster meetings calendar for 2025	On hold
4	Roll out a registration process for cluster membership	On hold
5	Finalize operational guidance on cash and voucher assistance	Done
6	Develop a one-page guidance on strengthening coordination	On hold
7	Share the draft CCPM Action Plan for comments	Done
8	Prepare an advocacy note or flash update for North Darfur	Done

## — STRATEGIC UPDATES FROM THE NATIONAL CLUSTER

- SHF Allocations Update
- ICCG Messaging on Closure and Decommissioning of IDP Sites
- ICCG Cross cutting issues Action Plan
- Update of the HNRP 2025 targets
- Response Overview Jan-Apr

# STRATEGIC UPDATES FROM THE NATIONAL CLUSTER

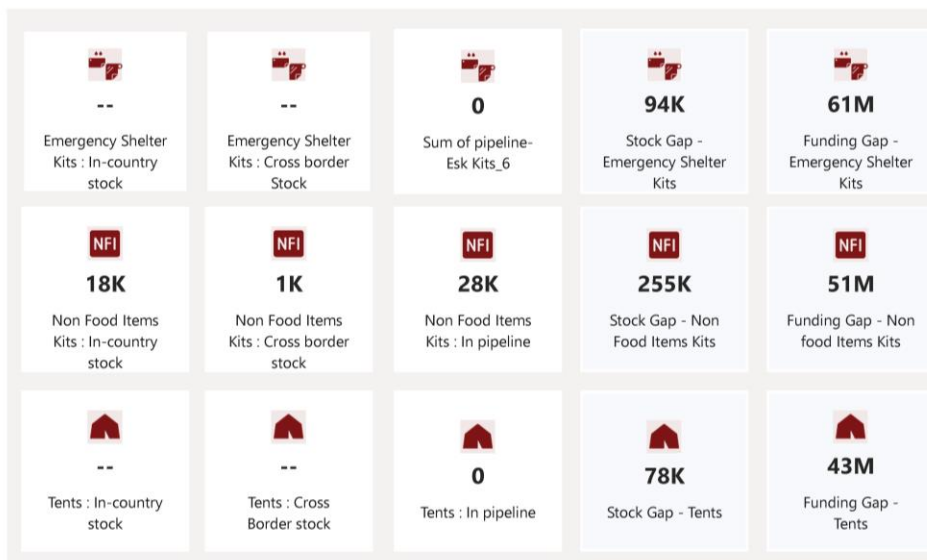


# STRATEGIC UPDATES FROM THE NATIONAL CLUSTER

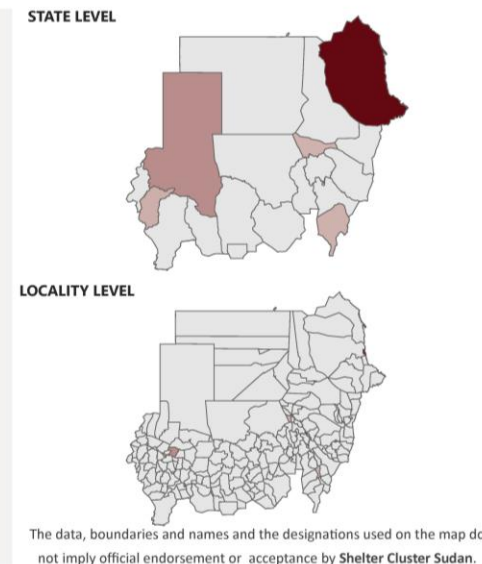
Overall Response | **Shelter and NFI Stock Level** | Response Gap Analysis | 3W of Active Partners

States: All | Localities: All

**Overall figures**



**Items locations**

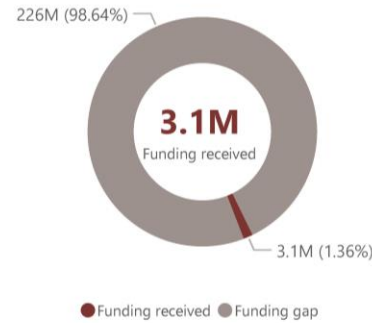


State name	NFI Kits gap	Funding gap for NFI (USD)	ESK gap	Funding gap for ESK (USD)	Tents gap	Funding gap for tents (USD)
Aj Jazirah	10,049	2,009,800	2,526	1,641,900	1,260	693,000
Blue Nile	2,811	562,200	809	525,850	403	221,650
Central Darfur	14,710	2,942,000	3,310	2,151,500	1,656	910,800
East Darfur	12,239	2,447,800	1,699	1,104,350	850	467,500
Gedaref	16,095	3,219,000	594	386,100	1,134	623,700
Kassala	5,544	1,108,800	-902	-586,300	547	300,850
Khartoum	-2,959	-591,800	263	170,950	131	72,050
North Darfur	120,826	24,165,200	66,600	43,290,000	61,777	33,977,350
North Kordofan	486	97,200	317	206,050	159	87,450
Northern	-3,952	-790,400	42	27,300	397	218,350
Red Sea	-8,746	-1,749,200	559	363,350	534	293,700
River Nile	12,667	2,533,400	2,624	1,705,600	935	514,250
Sennar	809	161,800	110	71,500	58	31,900
South Darfur	65,773	13,154,600	9,165	5,957,250	4,862	2,674,100
South Kordofan	11,999	2,399,800	878	570,700	831	457,050
West Darfur	1,597	319,400	743	482,950	370	203,500
West Kordofan	-23,951	-4,790,200	494	321,100	246	135,300
White Nile	19,080	3,816,000	3,870	2,515,500	1,486	817,300
<b>Total</b>	<b>255,077</b>	<b>51,015,400</b>	<b>93,701</b>	<b>60,905,650</b>	<b>77,636</b>	<b>42,699,800</b>

# STRATEGIC UPDATES FROM THE NATIONAL CLUSTER

Overall Response | Shelter and NFI Stock Level | **Response Gap Analysis** | 3W of Active Partners

2025 funding Gaps



Gap analysis per Activities

Activity	HPC target	Reached	Planned	Gap	Gap (%)
NFI kit distribution	1,562,810	373,795	223,860	965,155	62%
Provision of cash/vouchers for NFIs	390,700			390,700	100%
Provision of cash/vouchers for shelter repair or emergency shelter	374,780	2,160		372,620	99%
Emergency Shelter Kit (ESK) distribution	217,095	36,435	15,000	165,660	76%
Provision of cash for rent	198,645			198,645	100%
Tent distribution	108,500	7,390	24,885	76,225	70%
Rehabilitation of collective centers	83,850			83,850	100%
Establishment of communal shelters	62,865			62,865	100%
Transitional Shelter Support	27,405	1,010		26,395	96%
General site development	11,575			11,575	100%
Support Safe Shelter Initiatives	11,415			11,415	100%

Gap per activity and locations ?

States	Emergency Shelter Kit (ESK) distribution	Establishment of communal shelters	General site development	NFI kit distribution	Provision of cash for rent	Provision of cash/vouchers for NFIs	Provision of cash/vouchers for shelter repair or emergency shelter	Rehabilitation of collective centers	Support Safe Shelter Initiatives	Ter dis
Aj Jazirah	1,430	350	0	-45,145	1,135	2,560	2,805	470	38	
Blue Nile	4,045	1,100	0	19,055	3,585	7,270	7,275	1,465	189	
Central Darfur	16,550	5,455	0	62,295	16,355	29,795	25,410	7,275	903	
East Darfur	8,495	2,370	0	41,195	7,745	15,310	14,970	3,165	377	
Gedaref	470	3,500	0	59,475	11,425	23,555	23,985	4,685	521	
Kassala	-4,510	1,340	1,780	27,720	4,370	9,870	10,845	1,790	226	
Khartoum	1,315	325	0	-15,755	1,050	2,350	2,605	430	38	
North Darfur	51,355	16,400	4,800	356,305	52,175	102,340	96,025	21,880	3,543	
North Kordofan	1,585	385	0	2,430	1,275	2,860	3,120	525	38	
Northern	210	1,025	930	-37,260	3,345	7,130	7,470	1,365	152	
Red Sea	2,795	2,200	3,410	19,720	7,175	14,605	14,715	2,930	377	
River Nile	5,620	3,580	0	40,835	11,665	23,615	23,640	4,775	641	
Sennar	550	135	0	4,045	450	1,000	1,105	185	0	
South Darfur	45,825	15,220	655	301,615	46,655	87,520	78,455	20,290	2,751	
South Kordofan	4,390	2,565	0	59,995	7,960	15,000	13,615	3,415	415	
Abassiya	2,615	735	0	18,845	2,400	4,710	4,580	980	151	
Abu Jubayhah	-2,645	95	0	2,445	310	615	605	125	0	
Abu Kershola	200	55	0	1,405	180	355	345	75	0	

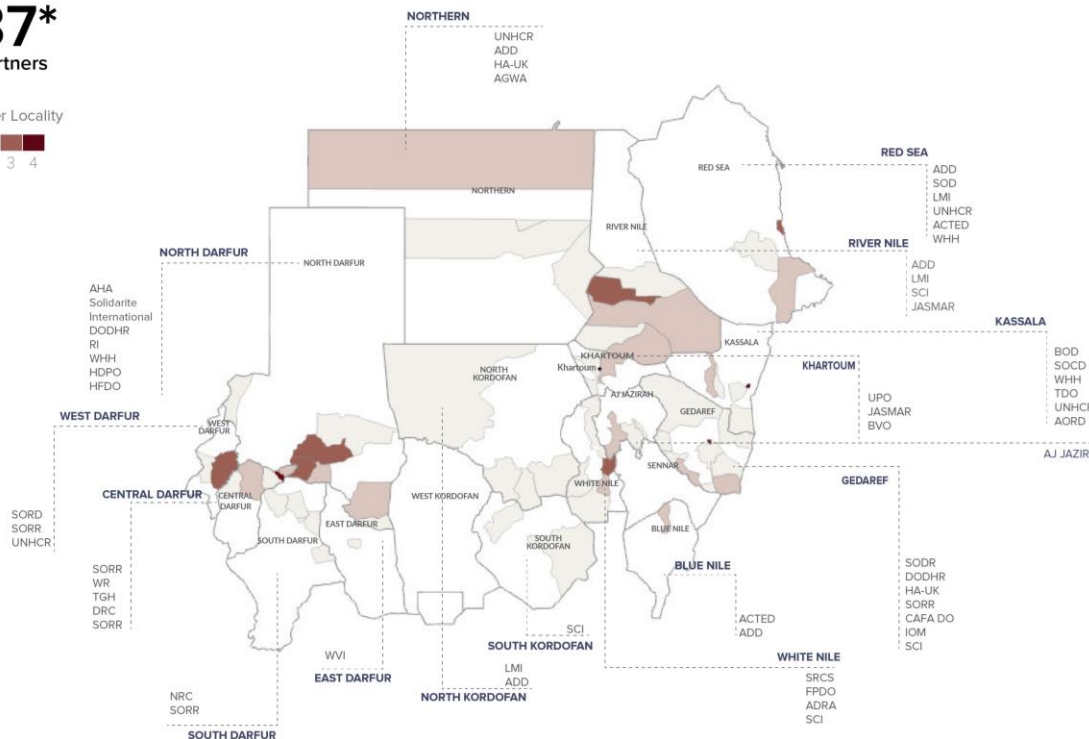
Target overreached ■ No Target ■ Gap remains ■

# STRATEGIC UPDATES FROM THE NATIONAL CLUSTER



**37\***  
Partners

#partners per Locality



Acronym	Organization Name	Type
ADD	Addition for Disasters assistance and Development	NNGO
ADRA	Adventist Development and Relief Agency	INGO
AHA	Africa Humanitarian Action	INGO
ACTED	Agency for Technical Cooperation and Development	INGO
AORD	Alsalam Organization for Rehabilitation and Development	NNGO
BOD	Butana Organization for Development	NNGO
DODHR	Darfur Organization for Development and Human Resources	NNGO
FPDO	Friends of Peace & Development Organization	NNGO
HFDO	Hope and Friendship for Development Organization	NNGO
HA UK	Human Appeal - UK	INGO
HDPO	Humanity for Development and Prosperity Organization	NNGO

Acronym	Organization Name	Type
BVO	Blue Sky Voluntary Organizational	NNGO
CAFA	CAFA Development Organization	NNGO
DRC	Danish Refugee Council	INGO
SAHARI	Sahari Organization For Development	NNGO
SCI	Save the Children International	INGO
SODH	Shoaa Organization for Development and Rehabilitation	NNGO
SI	Solidarites International	INGO
SOLD	Sudan Organization for Local Community Development	NNGO
SORR	Sudanese Organisation for Relief and Recovery	NNGO
SORD	Sudanese Organization for Relief and Development	NNGO
SRCS	Sudanese Red Crescent Society	Red Cross

# STRATEGIC UPDATES FROM THE NATIONAL CLUSTER

**National Cluster Coordination Team**

**MONIR AL-SOBARI**

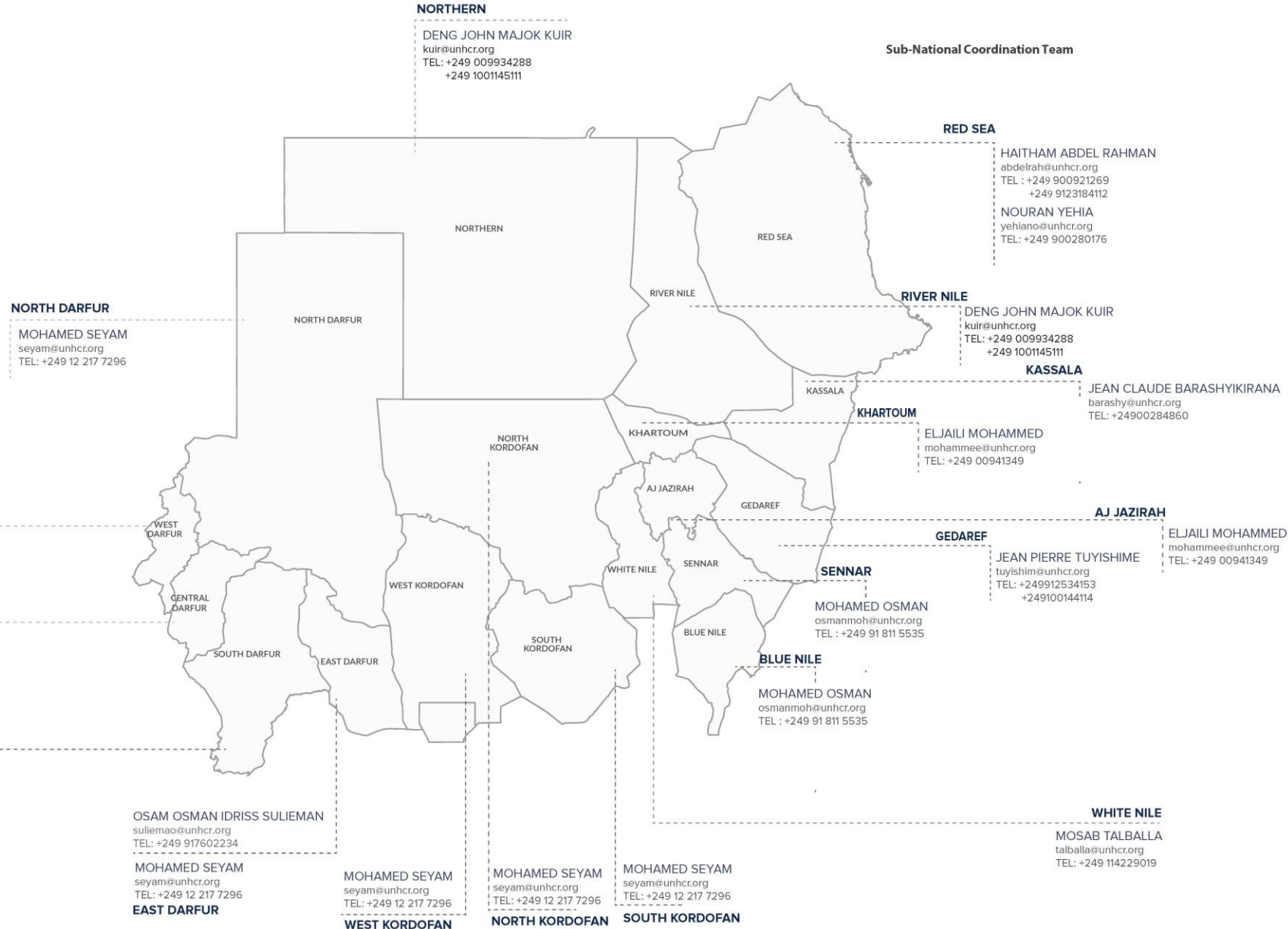
National Cluster Coordinator  
alsobari@unhcr.org

**VINCENT OKELLO**

Cluster Co-chair  
vincent.okello@sheltercluster.org

**KADJO MODESTE KOUASSI**

Information Management  
kouassi@unhcr.org



## — SITUATION UPDATES (KARTOUM AND AJ JAZIRAH STATES)

### Key Needs/Highlights

- Significant Increase in IDP Returnees
- Critical Shelter and NFI Shortages

### Response

- **UNHCR and Jasmar:** Distributed 2,550 Non-Food Item (NFI) kits in the Karri and Umbanda areas of Omdurman.
- **UNHCR and UPO:** Distributed 1,000 NFI kits to IDPs in Karrari
- **Inter-agency Mission (OCHA-led):** Visited Al Jazirah and Al Managil
- **UNHCR and SORR:** Distributed 1,000 NFI kits in the Wad Madani alkubra
- **Save the Children (with IOM funding):** Plans to distribute 2,000 NFI kits in Al Jazirah state.

### Challenges

- Limited Humanitarian Access
- Funding Gaps

## — SITUATION UPDATES (NORTH, SOUTH AND WEST KORDOFAN STATES)

### **Key Needs/Highlights**

- New IDPs arrived in El Obeid from El Nuhut estimated about 2,000 HHs living in the open space in the Bus station and need shelter and NFIs..
- New IDPs in West Bara NKS from El Nuhut and Al Khuwai, around 1000 HHs are in dire need of shelter and NFIs.
- New IDPs in Um Semaima West of El Obeid, around 800 HHs from El Hamadi, and El Debaibat need shelter and NFI assistance.

### **Response**

- UNHCR plans to distribute 1500 NFI kits in El Obeid during June 2025.
- SNFI Cluster partners to update if any partner has planned NFIs stock for NKS.
- Kordofan Cluster meeting will be on the 22nd of May 2025.

### **Challenges**

- High demand for shelter and NFIs with limited Shelter and NFI cluster capacities.
- Continue arrival of the new IDPs without provision of shelter and NFIs assistance.
- The rainy season is approaching and requires agile repositioning.

## — SITUATION UPDATES (NORTH DARFUR STATE)

### **Key Needs/Highlights**

- El Fasher and Dar El Salam are still under siege, with few managed to displace to the other safe locations.
- Tawila is still receiving the new arrivals from El Fasher and Zam Zam IDPs camp.
- Around 60,000 HHs arrived in Tawila, with a considerable number of IDPs arriving (Um Kadada, Um Baru, Kornoy, Sirif, Tina, Milit, Jabal Marra, and ED Ed Daein).

### **Response**

- UNHCR Tawila distributed NFIs for 3,900 HHs by AHA, plus 440 HH ongoing distribution by NRC, and plans to send another 2500 NFI kits to Tawila. UNHCR plans to send another 1000 to Milit, and 600 to Dar As Salam.
- In Tawila, TGH distributed 150 HHs shelter kits and NFIs. IOM has a plan to send 2500 NFI kits, SCI has 50,000 USD for the communal shelter (MSF France has 5,000 NFI kits to be confirmed).

### **Challenges**

- High needs for Shelter and NFIs assistance in Tawila and other areas mentioned in NDS.
- Shelter and NFI Cluster capacity only covers about 12% of needs in Tawila and requires additional funding to assist the most vulnerable IDPs.
- Some areas host IDPs in large numbers and need clarity on the exact IDP numbers.

## — SITUATION UPDATES (WEST AND CENTRAL DARFUR STATES)

### **Key Needs/Highlights**

- CD Jabal Marra received a considerable number of IDPs and is living in the open spaces in EJM.
- WD Geneina has a large number of IDPs living in the gathering sites with poor and overcrowded shelters.

### **Response**

- UNHCR plans to send 1,250 NFI kits to WD and UNHCR through SORR completed distribution of 700 PS in Kondebe and Abu Sorouj.
- IOM has plans to send 2,500 NFI kits to the CD.
- SCI, through the 48-hour mechanism, has plans to assist some IDPs in Jabal Marra.

### **Challenges**

- High needs of shelter and NFIs in Jabal Marra CD and WD, particularly among the new IDPs as the upcoming rainy season is approaching.
- New IDPs in Jabal Marra are living in flood-prone areas and need to be relocated as they are residing in the road of the valleys (creeks) and require shelter and NFIs support.

## — SITUATION UPDATES (SOUTH DARFUR STATE)

### **Key Needs/Highlights**

- SD receives a significant number of IDPs from NDS and living in scattered areas in SD Nyala, and need to be verified and assisted.
- Refugees in SD are living in poor shelter conditions, and the rainy season is approaching; are need plastic sheeting and blankets.

### **Response**

- UNHCR, through SORR has distributed 750 pieces of the plastic sheeting, and UNHCR plans to send 1,250 NFI kits from XB to support the new IDPs.

### **Challenges**

- Gaps of shelter and NFIs are huge and need to advocate and respond, as the rainy season is approaching, as the IDPs are living in poor shelters.

## — SITUATION UPDATES (EAST DARFUR STATE)

### **Key Needs/Highlights**

- New arrivals of the IDPs from Khartoum and Zama Zam are living in the gathering sites with poor and congested shelters, along with the old IDPs in ED.
- The new IDPs in Khazan Jadeed and Abu Managil are living in the open space.

### **Response**

- UNHCR, through WV completed the distribution of 2,100 pieces of plastic sheeting to the IDPs and Refugees in ED.
- UNHCR plans to distribute 1,250 NFI kits to the IDPs and Refugees in ED during June 2025.

### **Challenges**

- There is high demand for shelter and NFIs, challenged by limited funding.
- Access constraints for ED with the approaching rainy season.



**SUDAN  
SHELTER CLUSTER**

Coordinating Humanitarian Shelter and Settlements

# **Sudan Shelter and NFI Cluster Cash and Voucher Assistance Guidelines**

---

## — Purpose of the Guidance



### Coordination

- Improve coordination, advocacy, and resource mobilization
- Strengthen accountability and MEAL systems



### Community Centered Approach

- Align assistance with community preferences and market functionality

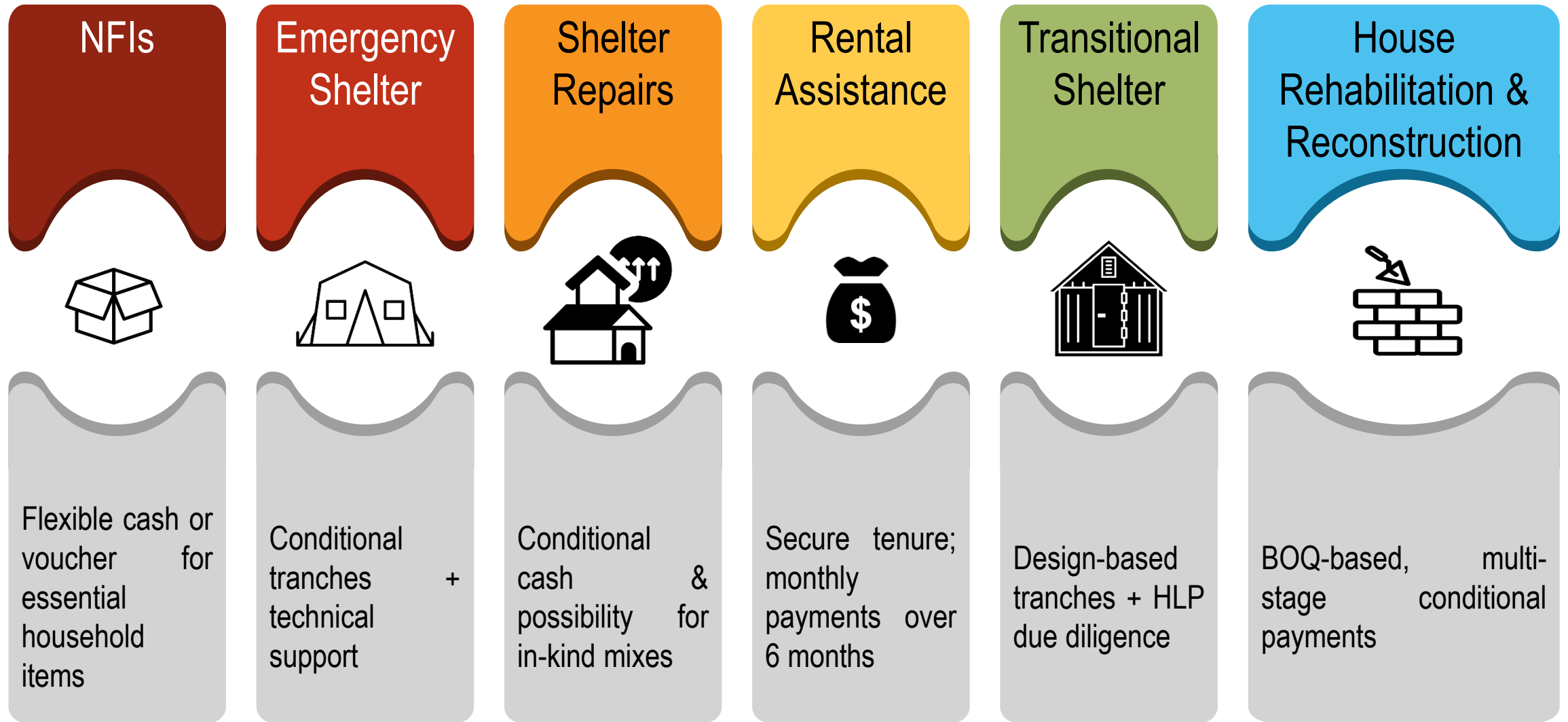


### Scale up

- Support partners to scale up CVA across Shelter & NFI programming

## CLUSTER CASH AND VOUCHER

# Key Shelter and NFI Activities Related to CVA



# — Program Design Considerations

## Community Approach

Community, needs, capacity and preferences: Dignity and inclusion



## Centrality of Protection

Protection-sensitive design for gender, age, and disability



## Targeting

Data-driven targeting and evidence-based transfer values



## Effectiveness

Cost efficient and cost-effective when compared to other modalities



## Feasibility and safety

political context and legal frameworks (including HLP rights)



## Market function

Accessibility, liquidity, vendor capacity



## Transfer mechanisms

Functional, accessible and timely cash transfer and distributions mechanisms with managed financial risks



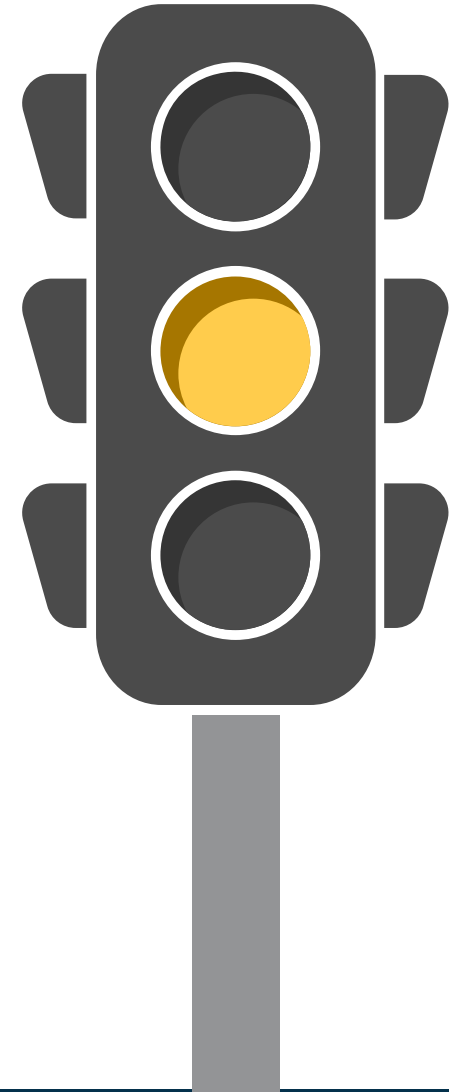
## Capacity

Adequate financial management capacity in place within partners and ability to scale up



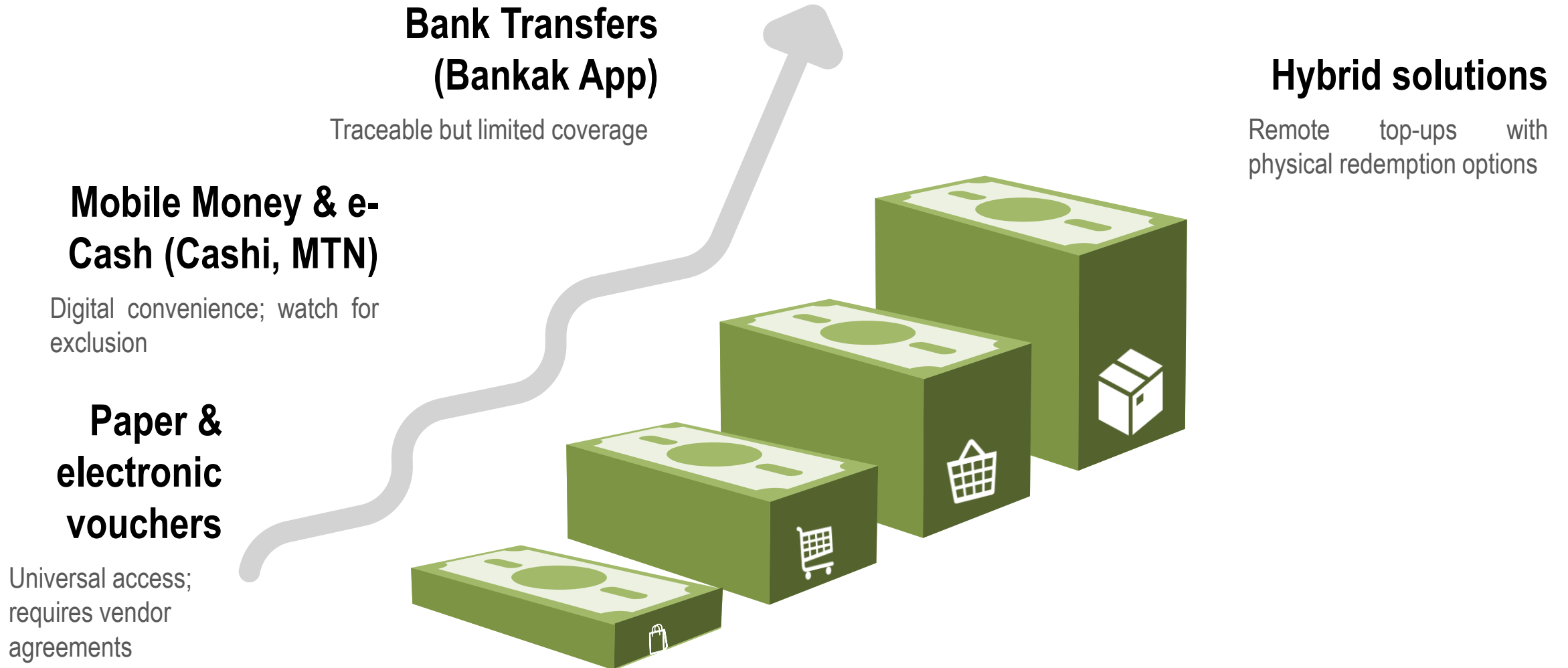
## — Managing risks

- Liquidity Monitoring: Coordinate with multiple FSPs to distribute risks
- Inflation planning: Real-time market price tracking and budget adjustments
- Robust Fraud Prevention: Segregation of duties, digital reconciliation, and audits
- Dynamic Inflation Mitigation: Inflation planning and real-time disbursement checks
- Inclusive Feedback Mechanisms: Community complaint and feedback mechanisms
- Security protocols for mobile distributions with community buy-in
- Environmental safeguards: Promote eco-friendly materials and practices



# — Transfer Mechanisms in Sudan

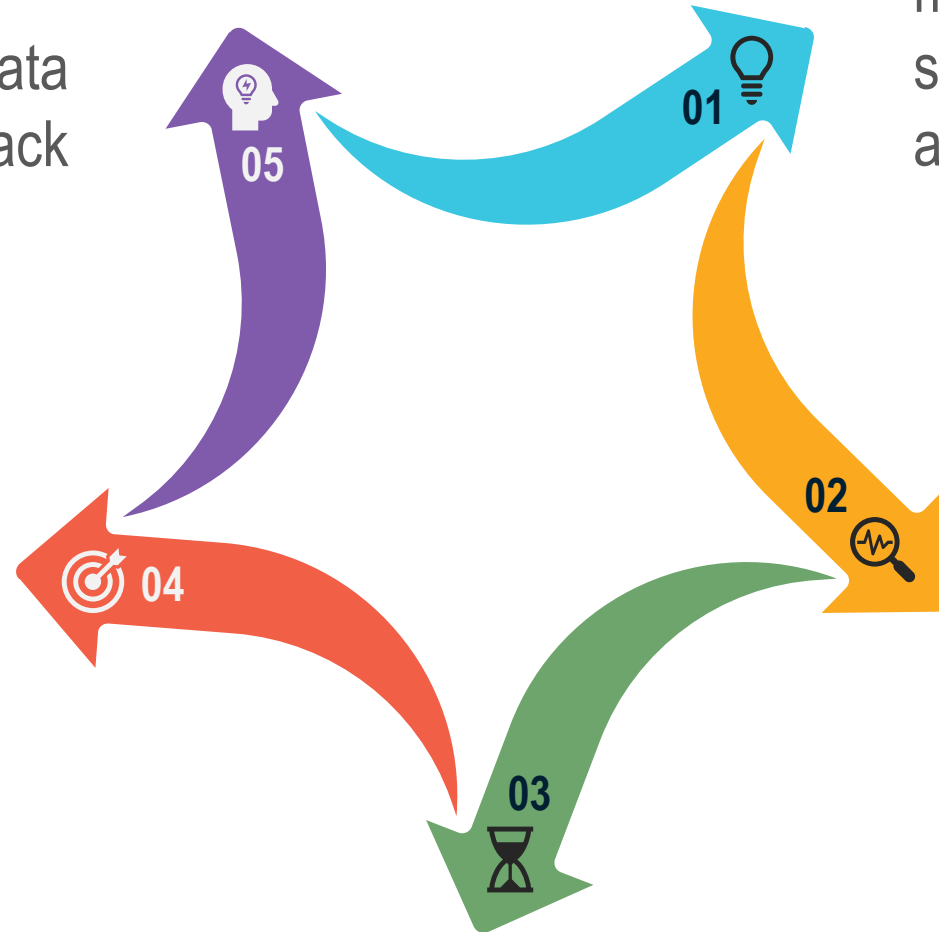
Mechanism choice driven by accessibility, cost, and infrastructure



## — Coordination & Linkages

Robust MEAL, data protection, and feedback channels

Complementarity with MPCA, Protection, CCPM, Nutrition, etc.



Appropriate transfer mechanisms/financial service providers for the area of programming.

Technical advice on market assessment related to Shelter and NFI

Information on inflation and liquidity.

## — Strategic Benefits

Enhances dignity, choice, and flexibility for crisis-affected populations & promotes locally-driven shelter solutions

Cost-efficient alternative to in-kind distributions and Reduces logistical complexity and security risks

Stimulates local market recovery and reinforces localization by using local markets and skills

Aligns with donor priorities for localization and sustainability, & strengthens integrated, multi-sectoral programming

## — Key Next Steps



### **Scale up**

- Capture lessons learned and plan wider roll-out

### **Pilot**

- Launch pilots with robust monitoring and accountability





**SUDAN  
SHELTER CLUSTER**

Coordinating Humanitarian Shelter and Settlements

**IMPACT** Shaping practices  
Influencing policies  
Impacting lives  
**REACH PANDA AGORA**

# 2025 Flood Susceptibility Analysis: Planning Data by REACH

---

## — 2025 FLOOD SUSCEPTIBILITY ANALYSIS: PLANNING DATA BY REACH

# Objective

- IMPACT / REACH created [national](#) and [state-level](#) flood susceptibility maps last year to help the response prepare for the rainy season..
- To support on flood preparedness for this year, additional elements of spatial analysis can be created including
  - Infrastructure points (like bridges)
  - Supply Chain Routes
  - IDP Sites
  - Affected population

# — 2025 FLOOD SUSCEPTIBILITY ANALYSIS: PLANNING DATA BY REACH

## Base Analysis: Flood susceptibility

### 01

#### Rainfall predication

- CHIRPS data
- Overall calculation of average annual precipitation over a 30-year period

### 02

#### Topography index

- STRM image (30 mts resolution)
- Identify flood prone areas using the following indices
  - Slope
  - Elevation
  - Topographic wetness Index

### 03

#### Drainage

- Hydrographic network
- Calculation of drainage density and distance to nearest water source

### 04

#### Soil

- Calculation of soil water holding capacity

**Rainfall prediction for 30 years, can be projected for the next 5 years**

**Criteria weighted using the Analytical Hierarchy Process**

**Worldpop database used to estimate affected population overlayed with flood susceptibility zones\*\* [**

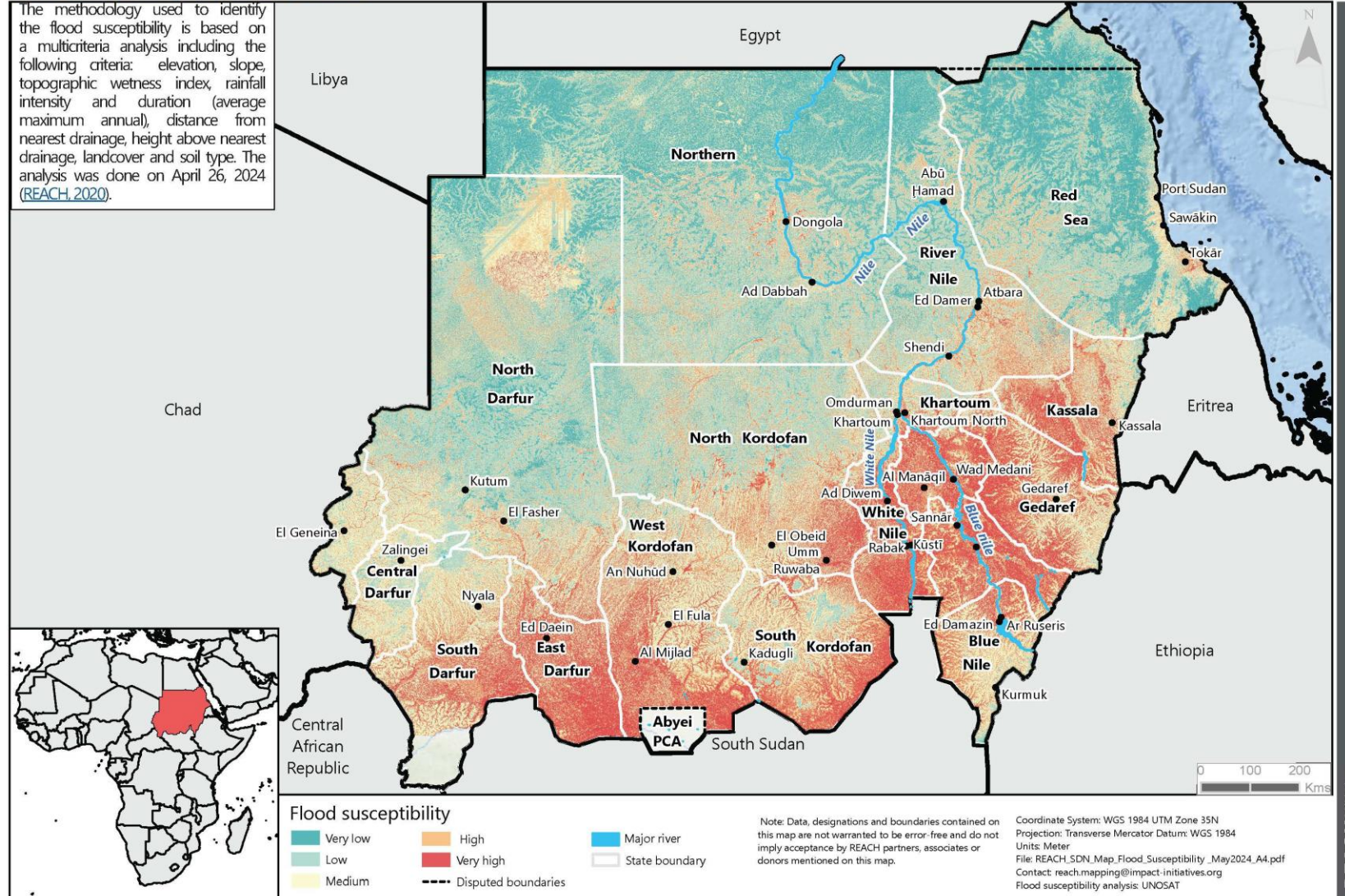
# 2025 FLOOD SUSCEPTIBILITY ANALYSIS: PLANNING DATA BY REACH

## Sudan Flood Risk Zones

REPUBLIC OF SUDAN  
Flood susceptibility map of 26 April 2024

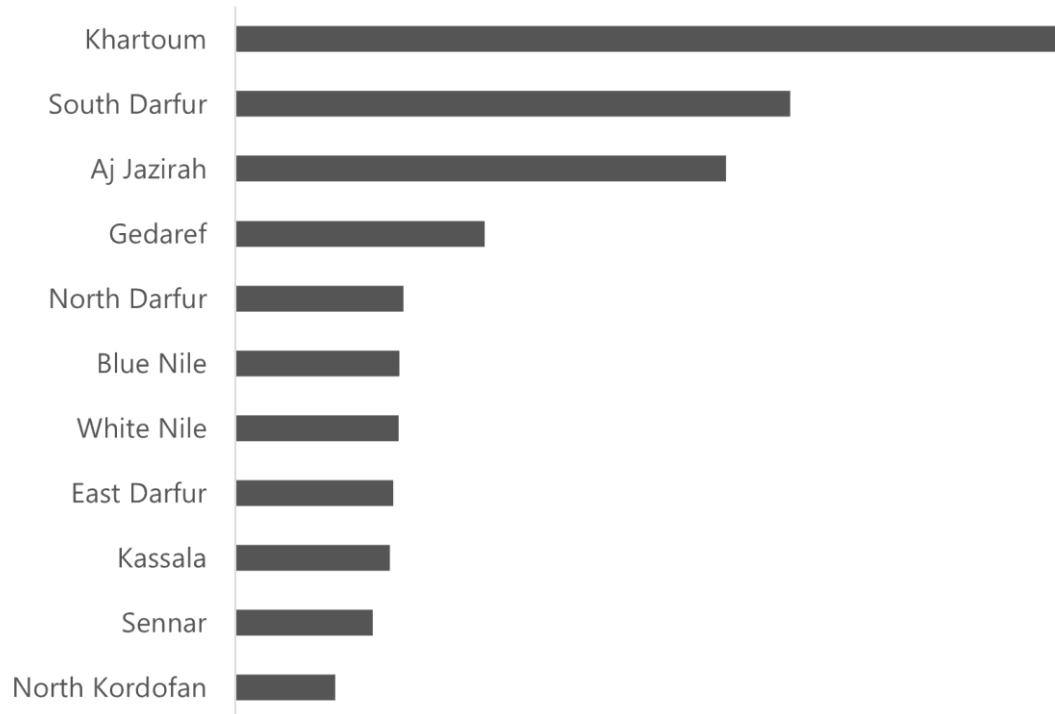
For humanitarian purpose only  
Production date May 05, 2024

The methodology used to identify the flood susceptibility is based on a multicriteria analysis including the following criteria: elevation, slope, topographic wetness index, rainfall intensity and duration (average maximum annual), distance from nearest drainage, height above nearest drainage, landcover and soil type. The analysis was done on April 26, 2024 (REACH, 2020).



# — 2025 FLOOD SUSCEPTIBILITY ANALYSIS: PLANNING DATA BY REACH

## \*Affected populations- by state



State	Population in high+ very high
Khartoum	287k
South Darfur	192k
Aj Jazirah	170k
Gedaref	86k
North Darfur	58k
Blue Nile	57k
White Nile	56k
East Darfur	54k
Kassala	53k
Sennar	47k
North Kordofan	34k

# 2025 FLOOD SUSCEPTIBILITY ANALYSIS: PLANNING DATA BY REACH

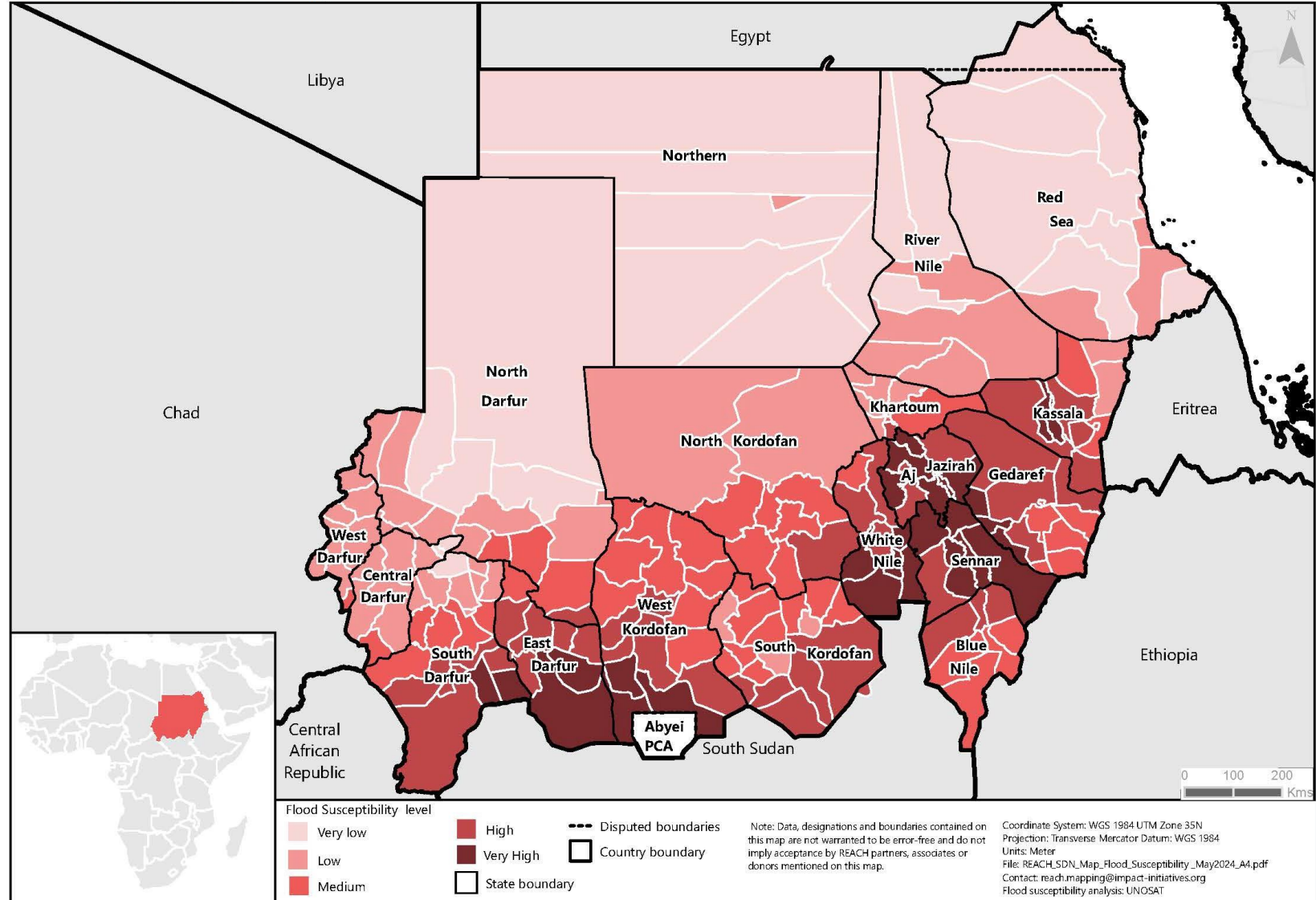
## Locality level flood susceptibility

- **80 localities** with a high susceptibility of flooding
- **22 localities** with over 50% of the population in high risk of flood zones
- Over **12,786,648** individuals in high-risk\* zones

Zone	#
High	80
Medium	96
Low	13

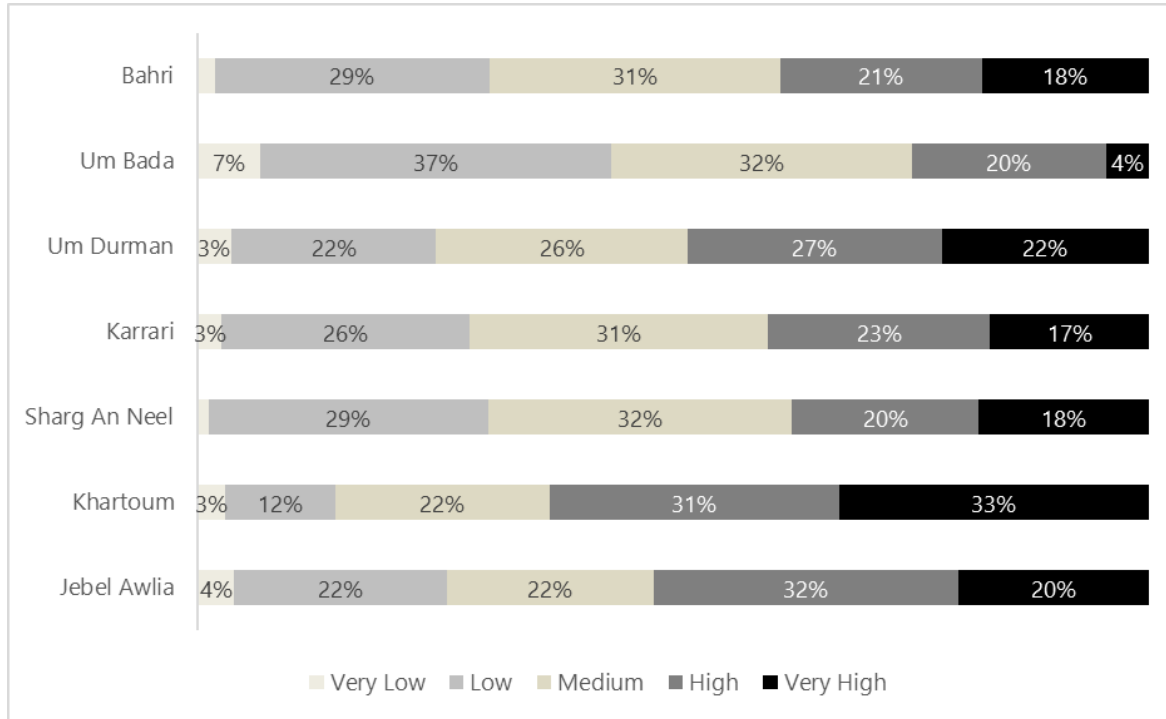
REPUBLIC OF SUDAN  
Flood susceptibility level per Locality

For humanitarian purpose only  
Production date May 07, 2025



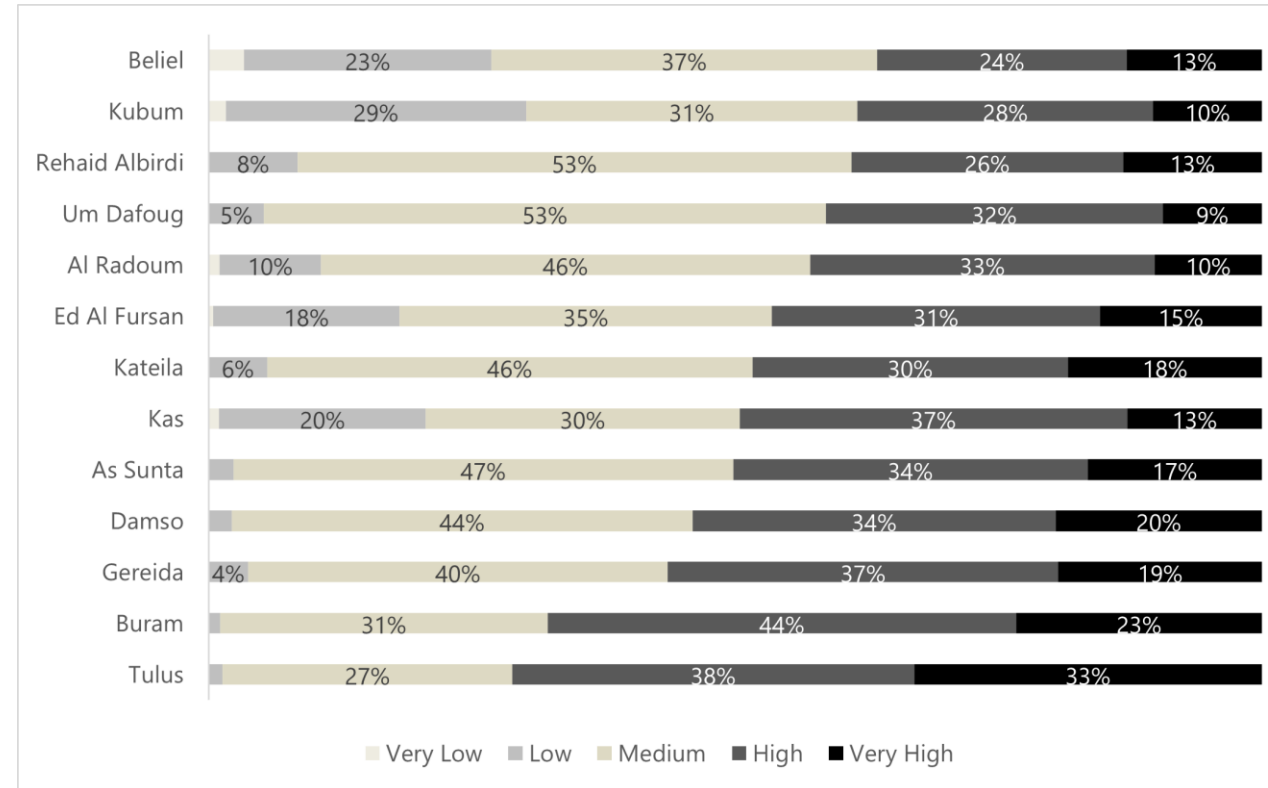
# 2025 FLOOD SUSCEPTIBILITY ANALYSIS: PLANNING DATA BY REACH

## Locality level affected populations



### Khartoum

- Population in very high + high risk zones: **2,870,101**
- Khartoum City: 63% of population in high-risk zones
- Jebel Awlia: 52% of population in high-risk zones
- Um Durman: 48% of population in high-risk zones

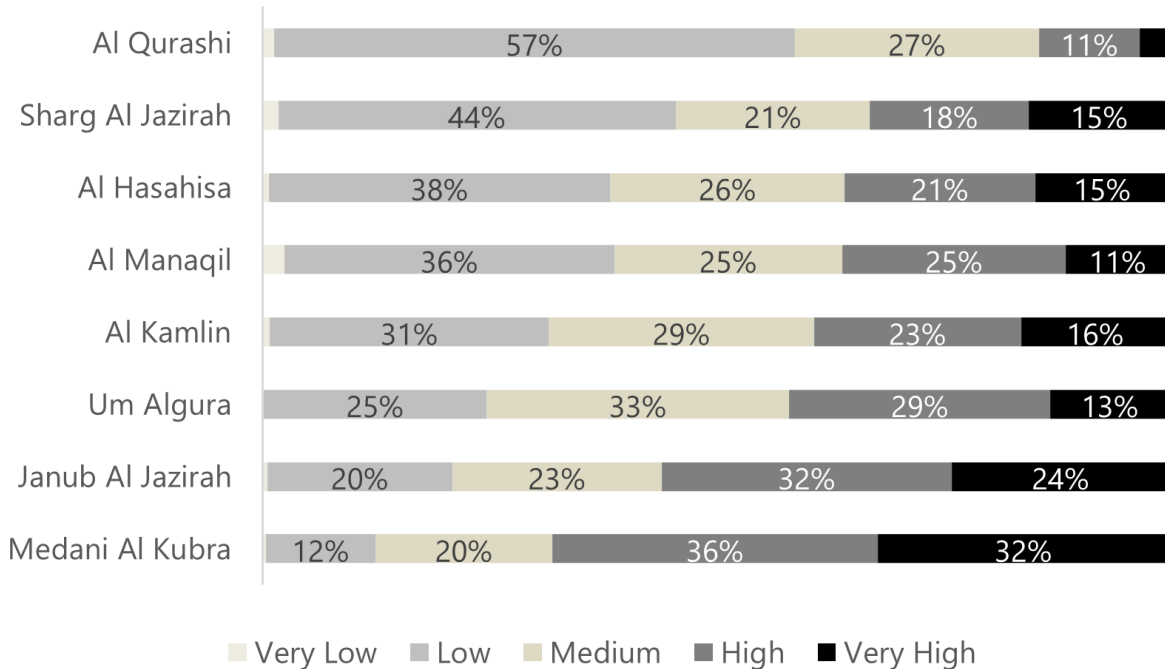


### South Darfur

- Population in very high + high risk zones: **1,929,630**
- Tulus: 71% of population in high-risk zones
- Beram: 68% of population in high-risk zones
- Gereida: 56% of population in high-risk zones
- Damso: 54% of population in high-risk zones

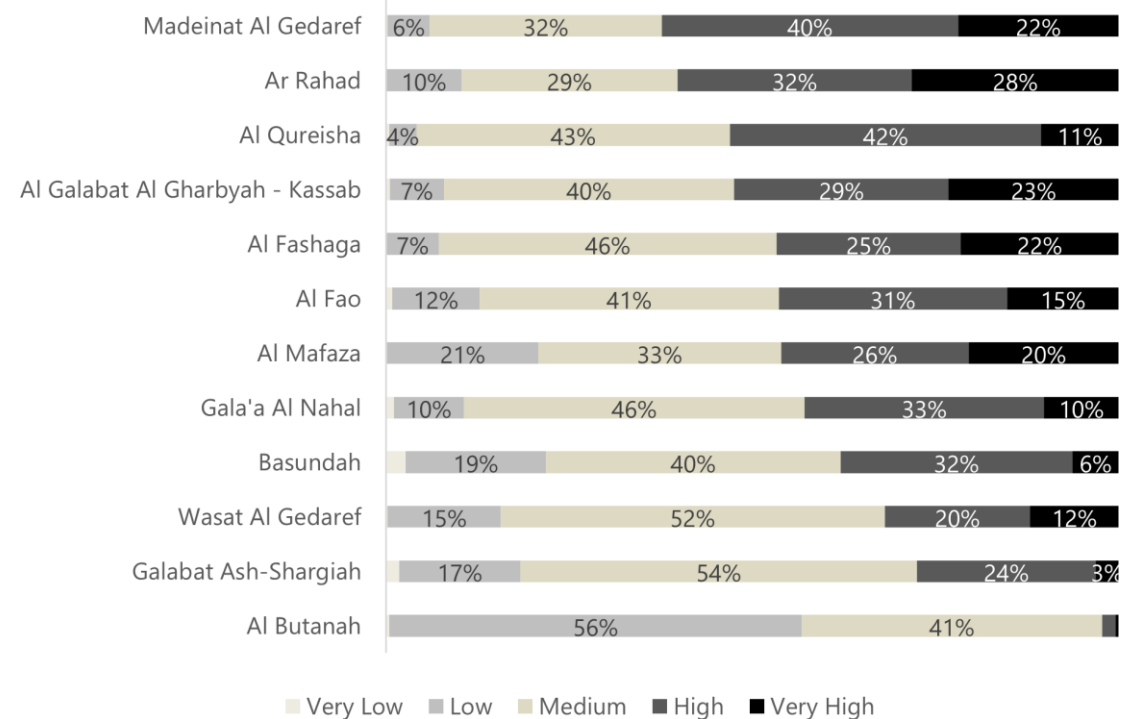
# 2025 FLOOD SUSCEPTIBILITY ANALYSIS: PLANNING DATA BY REACH

## Locality level affected populations



### Aj Jazirah

- Population in high-risk zones: **1,707,130**
- Medani Al Kubra: 68% of population in high-risk zones
- Janub Al Jazirah: 56% of population in high-risk zones
- Um Algura: 42% of population in high-risk zones



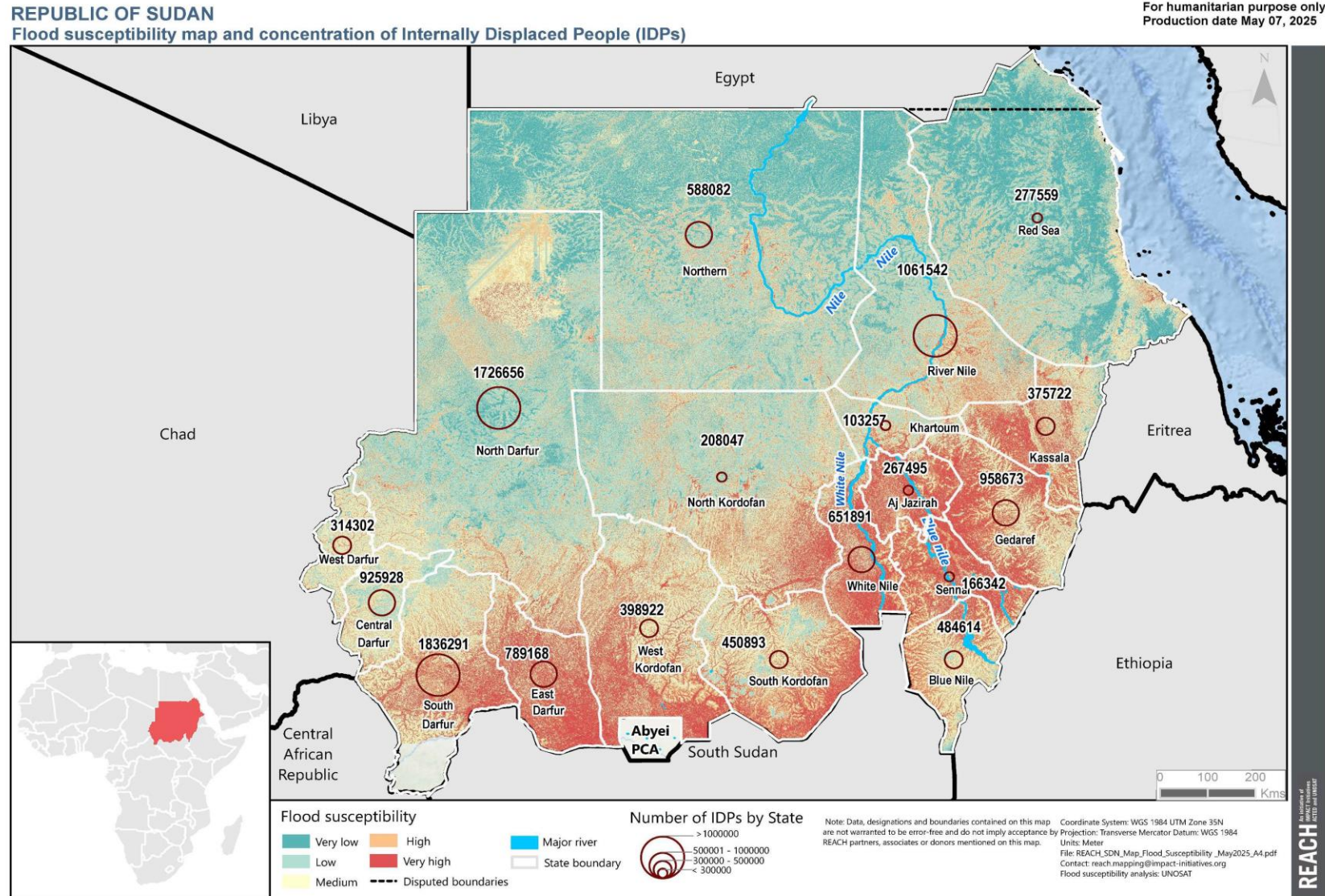
### Gedaref

- Population in high-risk zones: **866,345**
- Madeinat Al Gedaref: 62% of population in high-risk zones
- Ar Rahad: 60% of population in high-risk zones
- Al Qureisha: 53% of population in high-risk zones

# 2025 FLOOD SUSCEPTIBILITY ANALYSIS: PLANNING DATA BY REACH

## IDP affected populations

- Over 1000\* sites with a high flood risk
- Over 2,534,249 individuals in high-risk zones



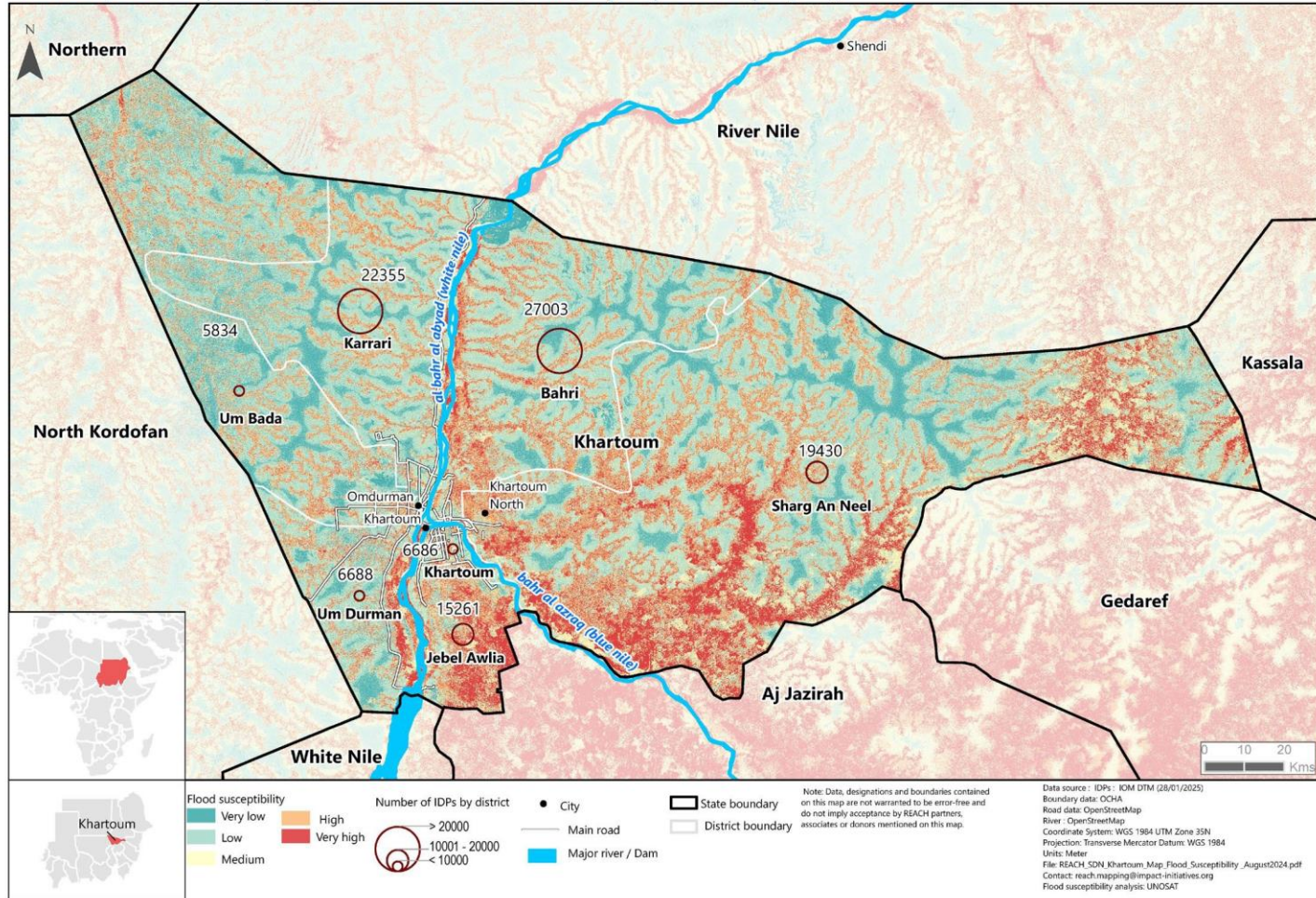
# 2025 FLOOD SUSCEPTIBILITY ANALYSIS: PLANNING DATA BY REACH

REPUBLIC OF SUDAN

White Nile flood susceptibility Map and concentration of Internally Displaced People (IDPs)

For humanitarian purpose only

Production date May 12, 2025



Khartoum State: # IDPs per locality

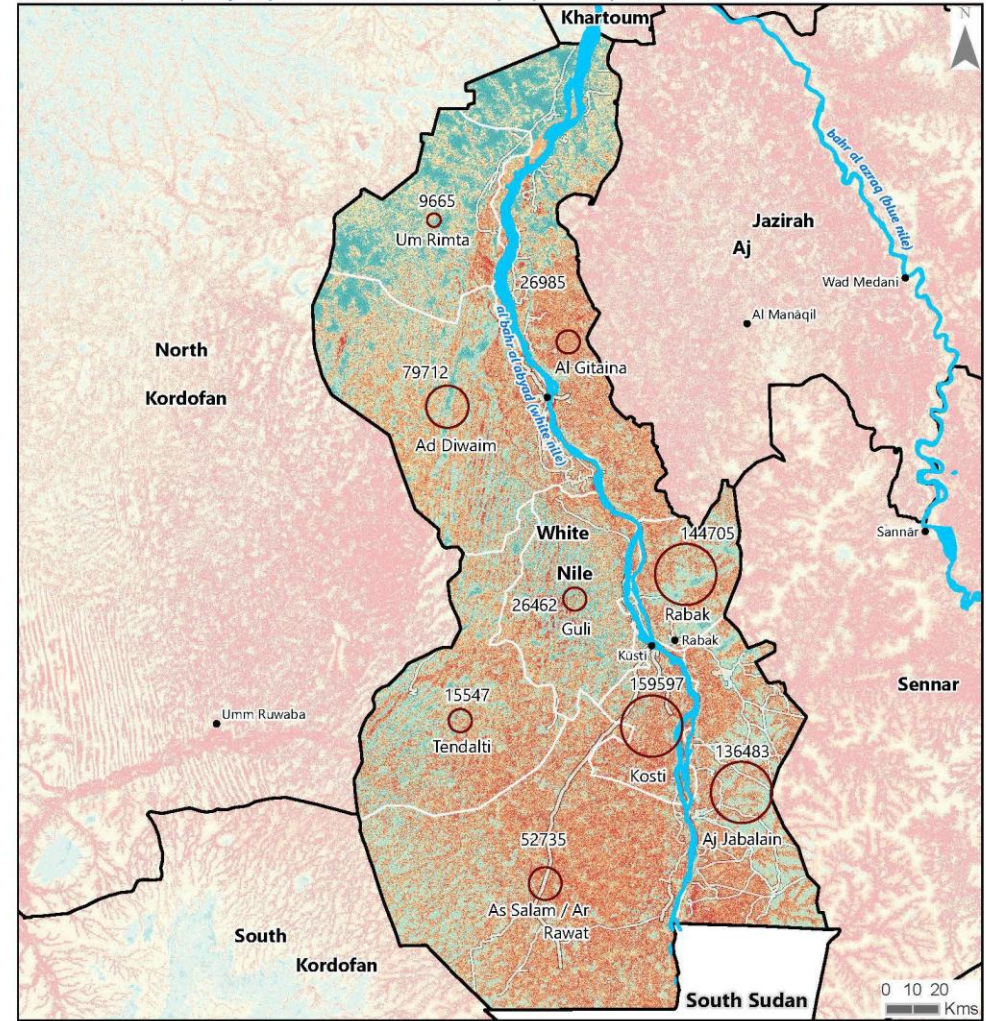
White Nile State: # IDPs per locality

REPUBLIC OF SUDAN

White Nile flood susceptibility Map and concentration of Internally Displaced People (IDPs)

For humanitarian purpose only

Production date May 12, 2025



**Data source:** IDPs: IOM DTM (28/01/2025)  
 Coordinate System: WGS 1984 UTM Zone 35N  
 Projection: Transverse Mercator Datum: WGS 1984  
 Units: Meter  
 File: REACH\_SDN\_White\_Nile\_Map\_Flood\_Susceptibility\_May2025.pdf  
 Contact: reach.mapping@impact-initiatives.org  
 Flood susceptibility analysis: UNOSAT

**Note:** Data, designations and boundaries contained on this map are not warranted to be error-free and do not imply acceptance by REACH partners, associates or donors mentioned on this map.

## — 2025 FLOOD SUSCEPTIBILITY ANALYSIS: PLANNING DATA BY REACH

### Next steps

- Data Tables with flood susceptibility per locality and affected population will be available for dissemination
- Updated site list- with affected population to be analyzed
- Health + WaSH cluster- Caseloads for cholera requested for disease risk predictions
- Logistics: key supply routes with the high likelihood of flooding to be embedded
- GIS database on flood susceptibility shared with the logistics cluster to embed within the Log IE platform
- List of key infrastructure supporting access/supply routes to be assessed for risk of flooding

## 2025 FLOOD SUSCEPTIBILITY ANALYSIS: PLANNING DATA BY REACH

# Thank you for your attention

Chiara Graldi- Research Manager: [chiara.graldi@impact-initiatives.org](mailto:chiara.graldi@impact-initiatives.org)



Chabi- Sr. GIS Officer: [olatondji.chabi@impact-initiatives.org](mailto:olatondji.chabi@impact-initiatives.org)





**SUDAN  
SHELTER CLUSTER**

Coordinating Humanitarian Shelter and Settlements



# **Presentation on an Innovative Emergency Shelter Solution by SORR**

---

# Shelter Kit Components Overview

Category	Component	Description / Function	Quantity	Specifications
<b>Structural Support</b>	Side Short Poles / Sheba (Y poles)	Vertical supports, Y-shaped to hold beams	6 pcs	2 m, 3" diameter
	Long Poles	Used for longer spans, horizontal or vertical framing	3 pcs	2.5 m, 3" diameter
	Truss Beam	Forms roof trusses for load distribution	6 bundles	2.5 m, 3" diameter
	Wall Plate / Beam	Placed on wall tops to support the roof structure	6 pcs	4 m, 3" diameter
	Purlins	Laid across trusses to support roofing material	12 pcs	2.5 m, 3" diameter
<b>Wall &amp; Roof Covering</b>	Grass Mat (Roof - Shergani)	Traditional roofing material for insulation and coverage	3 pcs	10 sqm each
	Grass Mat (Walls - Shergani)	Used for wall cladding	2 pcs + 3 pcs	2x10 sqm, 3x7 sqm
	Plastic Sheet	Waterproof layer under/over grass mats	1 pc	Standard sheet (4x6)
<b>Secondary Support</b>	Bamboo Sticks (Thick)	Wall framing, bracing	10 pcs	2.5 m, 2" diameter
	Bamboo Sticks (Thin)	Small trusses, ties, or wall supports	18 pcs	1.5 m
<b>Fastening Materials</b>	Locally Produced Rope	Binding and securing mats and structural elements	2 kg	Jamaica (robe)





# Kit Composition & Costs

Output	Description	Unit	Quantity	UOM	Unit Cost /USD	Total budget/USD
1	Side Short Poles/Sheba (Y pole) (3" dia)	Pcs	6	2 m	7.5	45
2	Long Poles (3" dia)	Pcs	3	2.5 m	7.5	23
3	Truss beam (3" dia)	Band le	6	2.5 m	7	42
4	Wall Plate/Beam (3" dia)	Pcs	6	4 m	7	42
5	Purlin (3" dia)	Pcs	12	2.5 m	6.75	81
6	Bamboo Sticks @2" dia	Pcs	10	2.5 m	1.9	19
7	Grass mat for the roof (Shergani)	Pcs	3	10Sqm	7	21
8	Bamboo Stick	Pcs	18	1.5 m	1.9	34
9	Grass mat for the walls (Shergani)	Pcs	2	10Sqm	7	14
10	Grass mat for the walls (Shergani)	Pcs	3	7Sqm	7	21
11	Locally Produced Rope	Pcs	2	kg	4	8
12	Plastic Sheet	pcs	1	pcs	15	15
	<b>Total</b>					<b>365 \$</b>



## B2. Procurement of shelter Kits

<b>Out put</b>	<b>Description</b>	<b>Unit</b>	<b>Specifications</b>
1	Side Short Poles/Sheba (Y pole) (3" dia)		2 m, 3" diameter
2	Long Poles (3" dia)		2.5 m, 3"diameter

3	Truss beam (3" dia)		2.5 m, 3" diameter
4	Wall Plate/Beam (3" dia)		4 m, 3" diameter

5	Purlin (3" dia)		2.5 m, 3" diameter
6	Bamboo Sticks @2" dia		2.5 m, 2" diameter

7

Grass mat for the roof (Shergani)



10 sqm each

8

Grass mat for the walls (Shergani)



2×10 sqm, 3×7 sqm

9	Grass mat for the walls (Shergani)		7 sqm
10	Locally Produced Rope		Jamaica

11 Plastic Sheet



Standard sheet  
(4x6)

# Key Impacts

## (a) Immediate Protection

- 1-Provides quick, life-saving shelter for displaced populations.
- 2-Protects against weather elements (rain, sun, wind, cold).

## (b) Enhanced Dignity and Privacy

- 1-Helps restore a sense of normalcy, privacy, and safety, especially for women, children, and vulnerable groups.

## (C) Increased Community Resilience

- 1-Enables self-recovery with locally adaptable materials and design.
- 2-Encourages ownership and community involvement in shelter construction.

## (d) Support for Livelihoods

Often uses local labor and materials, improving local economy.



# Photos of installed shelters



# Photos of installed shelters



## — AOB

- The next meeting is scheduled for 23 June.

— END

THANK YOU

More Info. is available at:

<https://sheltercluster.org/response/sudan>