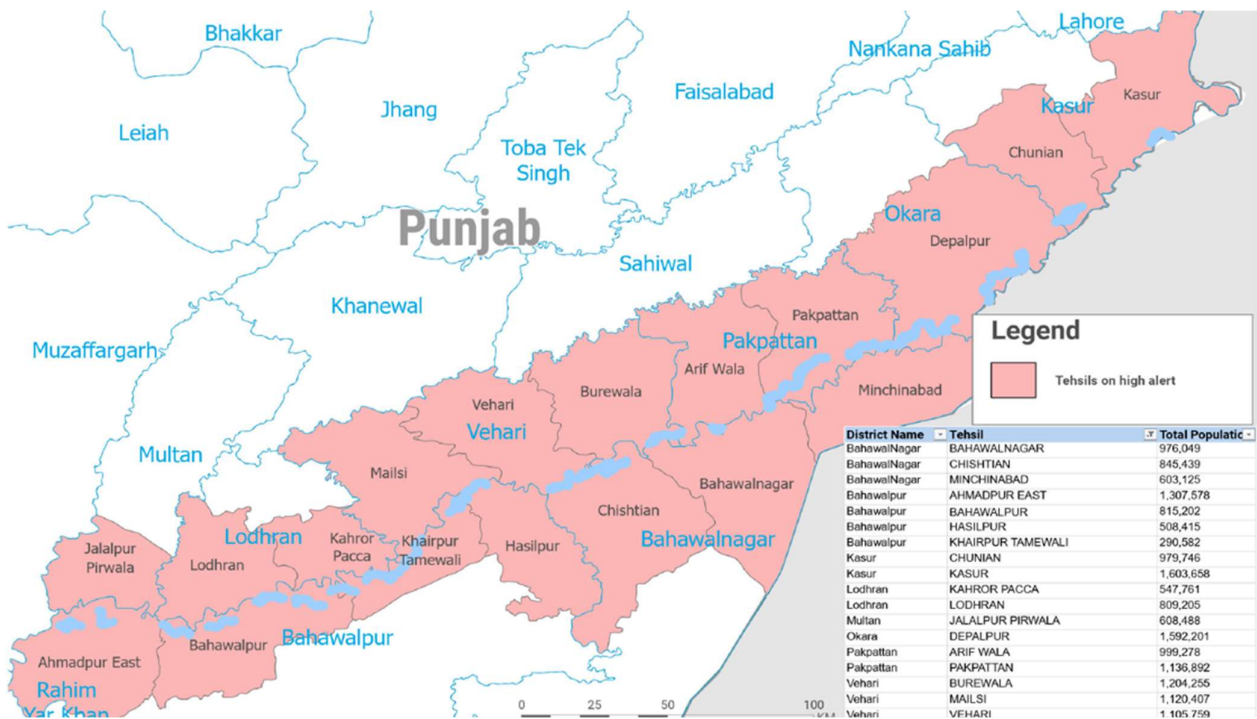


This report is produced by OCHA Pakistan, covering the period from 26 June 2025 to 26 August 2025.

### Highlights

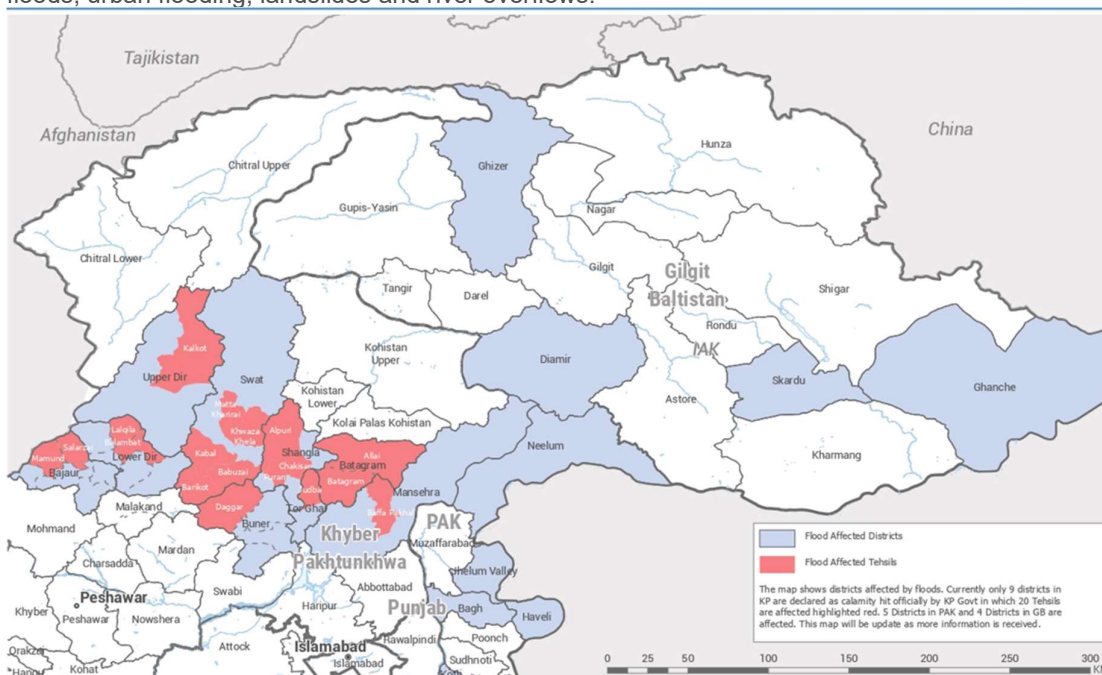
- Punjab:** Authorities remain on high alert in ten districts as upstream releases and near-full reservoirs increase the risk of riverine flooding along the Sutlej, Chenab and Ravi. Around 24,000 people have been evacuated from floodplains. Over 300 relief camps have been opened, though uptake is low due to livestock concerns and school re-openings. Health facilities report rising cases of skin infections, malaria, fever and snake bites, surpassing local capacity.
- Khyber Pakhtunkhwa:** Northern districts continue to bear the brunt. In Buner and Shangla alone, 479 deaths have been reported, with over 4,000 houses damaged (861 fully) and 674 schools affected. Landslides and destroyed bridges are restricting access, leaving urgent needs in debris clearance, WASH, health and livelihoods.
- Gilgit-Baltistan:** Glacier lake outburst floods and related hazards are intensifying. A GLOF in Ghizer on 22 August damaged 211 houses and left nine people dead, while Diamer suffered 408 damaged houses and nine deaths. Water systems, bridges, powerhouses and irrigation channels were severely hit, underscoring the need for targeted recovery and resilience support.
- Outlook:** NDMA warns of an exceptionally high flood in the Sutlej river within 48 hours. Active monsoon conditions are expected to persist until at least 10 September, with further heavy rain in eastern Punjab, KP, AJK, GB and parts of Sindh. River Ravi has overflowed its banks at Lakanpur following water releases from India’s Thein Dam, raising water levels and posing flood risks to downstream districts. High flood risk continues on the Chenab and Sutlej, and precautionary evacuations are ongoing. (See map below)



## SITUATIONAL UPDATE

### Nationwide overview

- Pakistan's 2025 monsoon season has been exceptionally severe, with torrential rains and floods affecting all provinces. Heavy downpours began in mid-June and continued in multiple spells, triggering countrywide flash floods, urban flooding, landslides and river overflows.



- As of 25 August 2025, the National Disaster Management Authority (NDMA) reported 799 fatalities, over 1,000 injured and 29,311 displaced across Pakistan due to the ongoing monsoon season. Punjab recorded 165 deaths and 584 injuries, while Khyber Pakhtunkhwa (KP) suffered the highest toll with 479 deaths and 347 injuries; together accounting for 80% of the casualties countrywide. This is almost three times the fatalities recorded in the same period last year. The humanitarian impact is widespread with over one million people directly affected by the various flooding incidents across the country.

### Summary of Damages & Losses (26 June – 26 Aug 2025)

Category	National Summary	ICT	KP	Punjab	Sindh	Balochistan	GB	AJK
Deaths	799	08	479	165	55	24	45	23
Injured	1,080	03	347	584	71	05	42	28
Houses damaged	7,225	65	4,077	220	90	175	1,029	1,569
Livestock lost	5,574	0	4,908	121	221	22	67	235
Relief camps established	613	01	308	291	02	0	11	0
Roads damaged (km)	655	–	432	–	1	3.6	17.6	201
Bridges damaged	238	03	52	–	–	02	87	94

- Authorities have placed ten districts<sup>1</sup> in Punjab on high alert as **rivers Chenab, Ravi, and Sutlej near dangerous flood levels**. According to Rescue 1122, around 24,000 people have been evacuated from vulnerable and low-lying areas, especially in Kasur, Okara, Pakpattan, and Bahawalnagar, amid rising waters and forecasted rain. Reservoirs near full capacity increase the risk of further flooding from dam releases. Urban flooding is also expected in Rawalpindi, Lahore, and Gujranwala divisions.

## **Khyber Pakhtunkhwa (KP)**

Mountain flash floods and cloudbursts have severely impacted KP's northern districts, with Buner and Shangla districts among the worst affected by the disaster. Buner alone has recorded 228 fatalities, with two villages, Beshoni and Qadar Nagar destroyed, and dozens of homes flattened.

Throughout KP, numerous landslides and lightning strikes have occurred in the rugged areas, and riverine floods hit some foothill districts. Access to certain valleys, parts of Kohistan and Upper Dir were cut off by landslides and destroyed bridges, complicating relief efforts.

The affected areas suffered extensive losses including 479 deaths (Children: 84 and females: 61) and damage to 4,084 houses (861 fully damaged) and alongside 674 schools affected. Infrastructure such as boundary walls and other structures also sustained considerable harm. Livestock losses were reported but remained comparatively low. The hardest-hit districts include Buner, Shangla, Swat, and Battagram, Upper and Lower Dir where heavy rain-induced flash floods and house collapses were predominant causes of damage and casualties. These impacts highlight the urgent need for continued humanitarian assistance and recovery efforts in the affected regions.



*Village Council Mullababa, Tehsil Babozai, Swat district: Home to approximately 200 families received significant damage during the recent flash floods. The area was submerged under 8 -10 feet of water, resulting in damages to houses, schools; leaving areas filled with mud and debris. With the support of the government, volunteers, humanitarian partners (NGOS), residents are actively engaged in cleaning debris and repairing their houses and community infrastructure (Photo Credit: Saminullah Afridi, District Coordinator, Swat)*

## **Punjab**

PDMA Punjab has issued a flood warning due to the likelihood of exceptionally heavy rainfall combined with expected water releases from Indian dams. This may lead to exceptionally **high flood levels** in the Sutlej, Chenab and Ravi Rivers and downstream areas within 48 hours (coming two days), creating significant flood risks. Up till mid-August river flooding had been moderate in Punjab with rivers mostly remaining below major flood levels. In late August, focus shifted along Sutlej River due to volumes of releases of water from India.

Provincial authorities have **safely moved tens of thousands** out of the flood prone areas along the rivers. Most people were evacuated from the areas around the Sutlej River preferred to stay with host communities rather than in formal camps.

<sup>1</sup> Kasur, Pakpattan, Narowal, Vehari, Bahalnagar, Okara, Lodhran, Multan, Muzaffargarh and DG Khan

Although authorities have established over 300 relief camps, only a small number of families are residing in them, as many people own livestock and the camps are set up in schools that will reopen on 1<sup>st</sup> September.

Many of Punjab's deaths (165) were due to roof collapses in heavy rains rather than complete house collapses. Evacuations ahead of river flooding have kept further casualties lower in Punjab.

Consultations with the community and government have highlighted support for emergency shelter, WASH (Water, Sanitation, and Hygiene), and healthcare.

The health situation has rapidly deteriorated, with widespread cases of skin infections, malaria, fevers, and snake bites. These health challenges are overwhelming the already limited medical response capacity in the affected areas.

## Sindh

Since 25 June, Sindh faced intense and widespread monsoon activity that impacted several districts, including Larkano, Kambar Shahdaskot, Tharparkar, and Karachi. The Guddu Barrage reached high flood levels, while Sukkur and Kotri barrages maintained medium to normal flows. The severe weather resulted in 55 fatalities and 78 injuries, mainly due to drowning, lightning strikes, and structural collapses. Additionally, 231 livestock perished, 91 houses were damaged, nearly 4 kilometers of roads were destroyed, and crops were lost over 350 acres. Seven embankment breaches occurred in Mirpurkhas, Sanghar, Hyderabad, and Jacobabad, all of which were quickly sealed. In response, PDMA and DDMA launched extensive dewatering operations, especially in Karachi, clearing key roads and underpasses and evacuating affected communities in areas like Karachi and Hyderabad. Relief supplies including tents, hygiene kits, and dewatering pumps were dispatched to support local authorities.

## Gilgit Baltistan (GB)

In Gilgit-Baltistan, most fatalities occurred in mountainous areas where communities were affected by landslides or flash floods. Many of the injured were hurt in rockfalls or road accidents during heavy rains. According to the Agha Khan Development Network (AKDN) assessment of 23 August 2025, seasonal events between June and August caused extensive damage across Gilgit-Baltistan and Diamer. Ghizer was the worst hit, with 211 houses damaged, 9 deaths, and major losses to schools, health facilities, water systems, bridges, powerhouses, and irrigation channels following a Glacier Lake Outburst Flood on 22 August. Diamer was also severely affected, with 408 houses damaged, 9 deaths, and significant infrastructure destruction. Other districts reported varying impacts, including housing, water supply, and irrigation system damage. The assessment underscores the urgent need for targeted recovery and resilience efforts, particularly in Ghizer and Diamer.

## **GAPS AND NEEDS**

Despite extensive relief efforts, major gaps remain, particularly in hard-hit mountainous areas where access is blocked by landslides and communities face rising disease and food insecurity. Overcrowding in some displacement camps in KP camps has worsened sanitation, while loss of farmland and livestock threatens longer-term recovery.

- **Khyber Pakhtunkhwa (Buner, Swat, Shangla):** Immediate priorities are shelter, WASH and winterization. Education support, debris clearance, and road rehabilitation are urgently required to restore access. Health concerns are escalating with expected dengue, malaria and skin disease outbreaks. Livelihoods remain at risk, with farmers needing seeds, tools and livestock replacement. In Shangla, where over 80,000 people are affected, scaled-up food assistance and winter kits are critical before snowfall.
- **Gilgit-Baltistan:** Floods and GLOFs in Ghizer and Diamer have destroyed water systems, bridges and powerhouses. Recovery of basic services and resilience measures are needed alongside immediate relief.
- **Punjab:** Flood-affected communities in the south face fodder shortages, forcing livestock sales at distress prices, while vector-borne and skin diseases are increasing. Support is required for fodder, veterinary services and public health interventions.

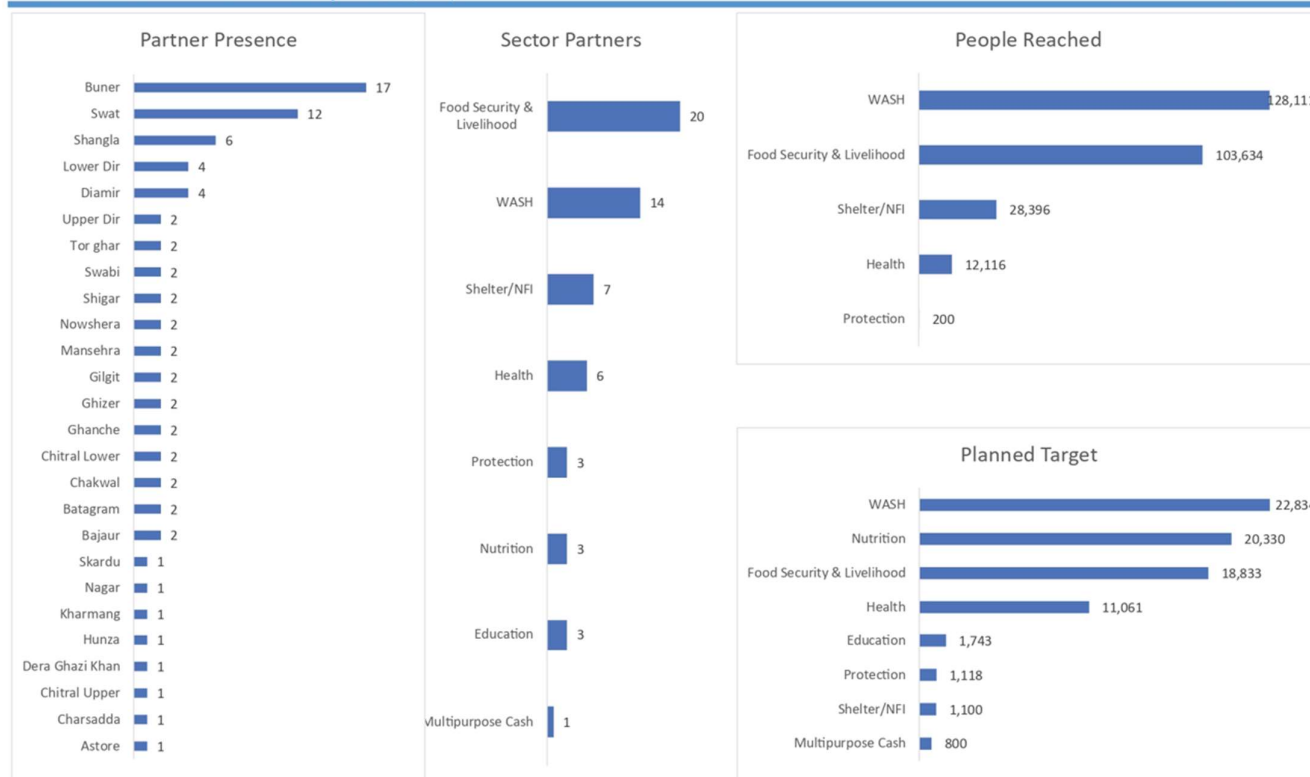
Across all affected areas, **sustained funding is urgently needed to restore WASH systems, protect health services, provide winter kits, and rebuild homes and livelihoods before winter sets in.**

**Analysis of needs and gaps is ongoing**, based on reports from organizations and local authorities, and will provide evidence-based priorities. Humanitarian actors are encouraged to coordinate closely with district authorities before deploying further life-saving kits. Coordination is taking place at the DC and ADC levels – the final report should be available within 48 hours.

➔ As per reports from the authorities and entries in the 5W, some areas remain more vulnerable than others, with certain remote districts still not having received any assistance. With assessments ongoing, the next coordination meeting will aim to identify priority areas for immediate assistance where needs persist.

## OCHA | Humanitarian Response (5W)

(as of 26 August 2025)



Creation date: August 2025

Source: Humanitarian Organizations Feedback: [ochapakistan@humanitarianresponse.info](mailto:ochapakistan@humanitarianresponse.info) [www.humanitarianresponse.info](http://www.humanitarianresponse.info)

## COORDINATION AND RESPONSE

Since July, national, provincial and local authorities, supported by the military and humanitarian partners, have been operating in emergency mode to coordinate rescue, deliver relief and conduct precautionary evacuations.

**National:** NDMA has led overall coordination through its 24/7 National Emergency Operations Center, issuing daily situation reports and real-time flood advisories. Early warnings enabled large-scale evacuations, particularly along major rivers in Punjab. Relief stocks dispatched to provinces include over 6,000 tents, 3,800 ration bags, and equipment such as boats, life jackets and de-watering pumps.

**Punjab:** PDMA oversaw the evacuation of tens of thousands from flood zones along the Sutlej, preventing major casualties. Rescue 1122 has carried out over 520 operations, moving people, livestock and goods to safety. Authorities remain on alert for further surges in the Chenab and Ravi rivers.

**Khyber Pakhtunkhwa:** PDMA has led emergency operations in Buner, Swat and Shangla, with 308 relief camps sheltering nearly 26,000 people. Humanitarian partners are supporting urgent health, WASH and livelihood needs. WHO leads disease surveillance and vector control, while UNICEF has distributed hygiene kits, restored a major water supply

and provided chlorine to PHED. National and international NGOs are assisting with debris clearance, education support, NFIs, food, winter kits and rehabilitation of water schemes and bridges. Key gaps remain in debris clearance, WASH infrastructure, mental health services and livelihood restoration. In Shangla, where 36 people died and over 80,000 were affected, urgent needs include food, winter kits, hygiene kits and classroom tents, alongside critical road restoration for access and income.

**Gilgit-Baltistan:** Authorities and partners continue to respond to recent GLOF and flood impacts in Ghizer and Diamer, where houses, bridges, water systems and powerhouses were damaged. Recovery and resilience support will be required alongside immediate relief.

**Sindh:** PDMA has focused on urban flood response in Karachi and Hyderabad, deploying de-watering pumps and emergency medical services, while pre-positioning relief tents and tarps for potential riverine floods.

**Coordination:** OCHA has established a WhatsApp group for partners responding in KP to facilitate real-time information sharing, including on disease monitoring. General Coordination Meetings are being convened in affected KP districts, alongside Emergency Working Group meetings at national and provincial level. OCHA is compiling partner response activities and partners are encouraged to record their interventions through the shared reporting link: [Click here to report](#).

## WEATHER FORECAST

---

According to NDMA's weather advisory issued on 25 August 2025, a flood warning has been issued for the River Sutlej, forecasting an exceptionally high flood level within the next 48 hours.

PMD forecasts active monsoon conditions until at least 10 September, with another rain spell likely in early September. Heavy downpours may hit eastern Punjab, KP, AJK, GB, and parts of Sindh. GLOF risk remains in GB. Rivers Chenab and Sutlej face high flood risks; Ravi and mid-Indus may see moderate–high floods depending on rain and dam releases. Authorities remain on alert as communities are being evacuated to be protected from further heavy rain and flooding.

**For further information, please contact:**

**Ms Fatima Iqbal**, Humanitarian Affairs Officer, [iqbalf@un.org](mailto:iqbalf@un.org)

For more information, please visit [Pakistan | ReliefWeb Response](#)

To be added or deleted from this Flash Update mailing list, please e-mail: [ocha.pakistan@un.org](mailto:ocha.pakistan@un.org)