

Philippines Shelter Cluster: Compounded Shocks Response Humanitarian Partners Coordination Meeting | 29 January 2026

Agenda

01. Objectives:

- Have a shared understanding of national and local priorities and response efforts
- Understand the capacity and contributions of humanitarian partners
- Agree on a common vision towards a coordinated response with pathways to recovery

02. Situation Overview:

- Compounded impact, joint response efforts, outstanding needs and priorities.

03. Humanitarian Shelter Response | Reach Status | Update:

- How are humanitarian partners contributing to the relief efforts.

04. Recovery of Shelter Efforts | Moving Forward | Open Discussion:

- Emerging trends in shelter needs and how humanitarian partners may contribute to addressing priority response gaps, and recovery efforts.

05. Any Other Business (AOB)

Participants

Shelter Cluster/IFRC
DHSUD
ACCORD
Australian Embassy
Canadian Red Cross
CARE
ECOWEB
Habitat
Humanity & Inclusion
IFRC
IOM
Netherlands Red Cross
Philippines Red Cross
PHI Resilience
ShelterBox
UN OCHA
UN Women

Meeting Minutes

Situation Overview

The Shelter Cluster Coordinator and Information Management Coordinator presented key available information on the impact and ongoing humanitarian shelter response, following consecutive earthquakes in Cebu and Davao and typhoons Tino and Uwan, which affected different geographic areas across the Philippines. The overview aimed to describe the

situation by highlighting the correlation between overall impact, severe house damage, current shelter assistance reach, and the estimated outstanding shelter needs in severely affected areas across the country:

- In areas affected by typhoon Tino and the Cebu Earthquake, data from DROMIC indicates that 60,194 families remain displaced.
- Comparing the number of totally damaged houses from the start of the response to the number of households reached with humanitarian aid according to the 5Ws indicates that there are potentially large gaps in the reach of the humanitarian response.
- This analysis is based on a number of assumptions and incomplete data, so cluster members are requested to consider whether it aligns with their knowledge and experiences, and whether they agree with its conclusions.

Humanitarian Shelter Response

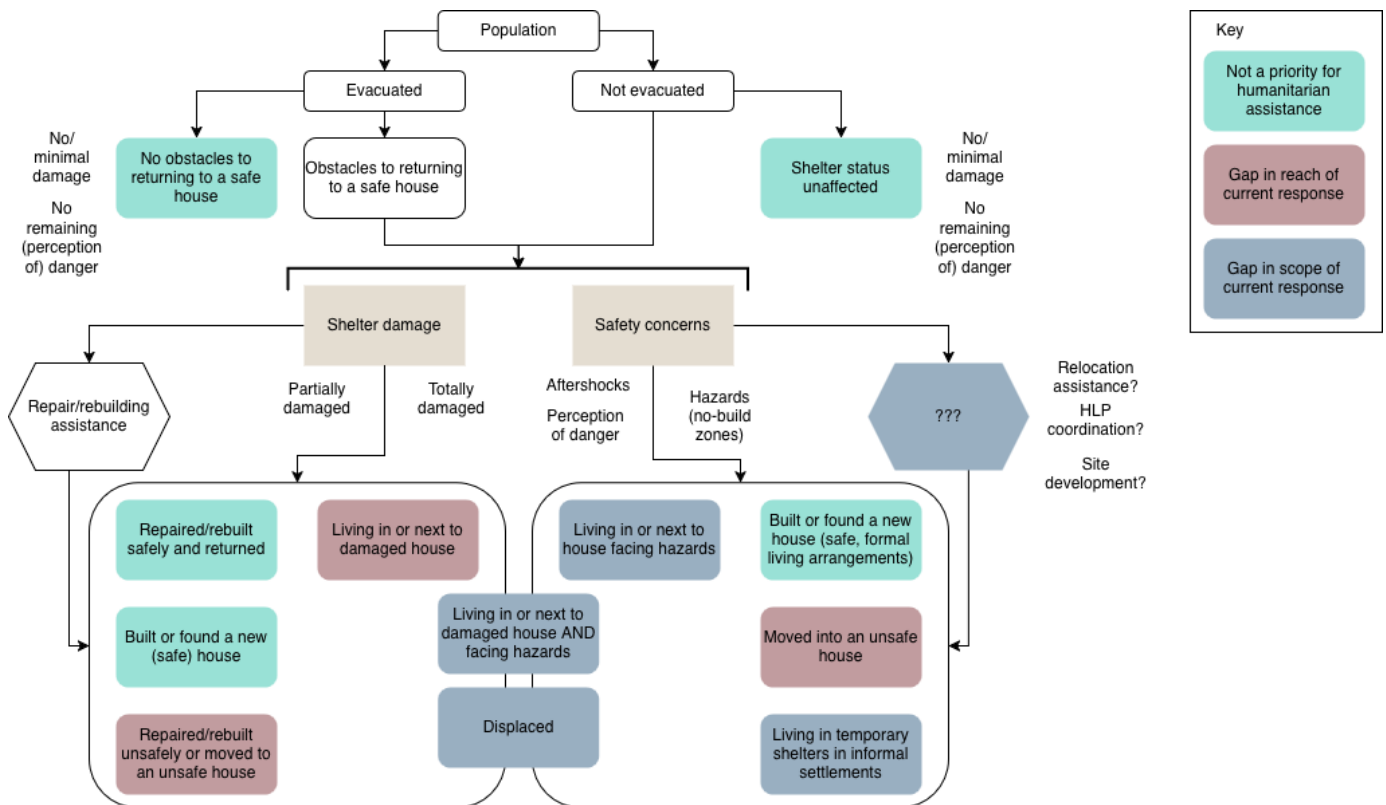
The Shelter Cluster Information Management Coordinator presented the information available on the humanitarian response so far, with a deep dive into Cebu province.

- First, cluster members were requested to ensure that their agencies' work is reported through the 5Ws process in coordination with OCHA.
 - Information on the 5Ws process can be found [here](#).
 - For any support with the 5Ws, please contact the Shelter Cluster Information Management Coordinator at im1.phil@sheltercluster.org.
- Data available via DROMIC shows the geographic spread of housing damage and continued displacement due to Typhoon Tino and the Cebu Earthquake.
 - The geographic reach of the humanitarian response as reported through the 5Ws broadly lines up with where the highest needs might be.
 - At the same time, geographic patterns suggest that the areas with the highest reported levels of shelter damage might have been targeted with more humanitarian aid than areas with the highest remaining displacement.
 - Question for attendees: might this discrepancy be in part due to difficulties addressing the humanitarian needs of populations who cannot return to their original houses?
- A map and table showing the activities that cluster members have reported and where they have implemented them is available in the meeting presentation.
- The available information on planned recovery-related programming shows that distributions of building materials are primarily planned for the municipalities north of Cebu City and support on 'transitional' shelter and HLP are planned for areas around Bogu City.
 - Question for attendees: are there other areas with a need for recovery assistance, especially around temporary shelter, HLP, and relocation?
 - For example, areas with ongoing displacement?
 - More information is needed on what activities cluster members are planning to carry out. Members are highly encouraged to contact the coordination team to discuss planned activities.
 - This will also be in part addressed by efforts to improve the 5Ws process in coordination with OCHA.

Recovery Shelter Efforts

The cluster coordination team presented a needs and gap analysis diagram, outlining two primary categories of households in need that may represent an opportunity to address key gaps in the humanitarian response so far:

- Households not yet reached by the types of response provided to date;
- Households that have fallen outside the scope of the current response because they cannot or should not return to their previous houses due to safety concerns/no-build zones.
 - These households may require complex interventions, including relocation assistance and site development in coordination with LGUs.
- Question for attendees: do you agree with this assessment of the situation?



The cluster coordination team, in collaboration with key stakeholders, is committed to steering and support activities that better guide and capture ongoing assistance, including:

- Revisiting the 5Ws reporting process to better reflect ongoing and planned interventions (PSC Coordination team and OCHA)
- Finalise the development of guidance on concrete and masonry construction techniques (TWiG co-led by IOM and Care)
- Update the [Philippines Shelter Cluster's Recovery Shelter Guidelines](#) and Intervention Options (PSC Coordination team and SAG)
- Working with DHSUD to operationalise the national [Post-Disaster Shelter Recovery Policy Framework](#) (DHSUD, PSC Coordination team, and SAG)
- Further developing the Shelter Severity Classification (SSC) mapping tool (PSC Coordination team, SAG, and DHSUD)
- Finalising the 'House Damage Definition' process (TWiG lead by DHSUD, engaged PSC partners, and PSC Coordination team)

AOB/discussion

- Attendees requested more time to read and reflect on the diagram presented and consider whether they agree with the associated assessment of needs.
 - Proposed to have a next meeting on Thursday, 5 February 2026
- Suggestion to coordinate with the Philippines Disaster Relief Foundation (PDRF), a key private sector organisation working on humanitarian relief
- Acknowledgement of the importance of sub-national coordination among humanitarian partners, local actors and authorities, to harmonise and support operational planning and implementation of shelter assistance interventions. IOM has expressed interest in the joint commitment to further explore the humanitarian partners' capacity and availability take on the responsibility to establish and deliver practical coordination services at the subnational level, in most impacted areas.

Actions Points | Short Term:

- Share the meeting minutes and presentation (Shelter Cluster coordination team)
- Organise a follow-up meeting (Thursday, 5 February 2026) to revisit, discuss and validate the needs and gap analysis diagram (Shelter Cluster coordination team)
- Reach out, seek meaningful engagement and coordination with the Philippines Disaster Relief Foundation (PSC Coordinator and HfH/Sanjeev Hada)
- Revisit the 5Ws reporting process to better reflect ongoing and planned interventions (PSC Coordination team and OCHA)
- Finalise the development of guidance on concrete and masonry construction techniques (TWiG co-led by IOM and Care)
- Update the Philippines Shelter Cluster's Recovery Shelter Guidelines and Intervention Options (PSC Coordination team and SAG)
- Consult and assess humanitarian partners' capacity, availability and willingness to take on the responsibility of PSC Sub-national coordination, to establish and deliver practical coordination services in most impacted areas (PSC Coordination team and IOM)