



**PHILIPPINES
SHELTER CLUSTER**

Coordinating Humanitarian Shelter and Settlements

Compounded Shocks Response Humanitarian Partners Coordination Meeting

5 February 2026

AGENDA

01. Objectives

02. Agreed Action Points | Update

03. Needs and Gaps Analysis | Validation | Open Discussion

04. Any Other Business (AOB)

01. Objective

- Shared understanding of national and local priorities and response efforts
- Collective capacity and contributions of humanitarian partners
- Common vision towards a coordinated response with pathways to recovery

Aiming to better guide the humanitarian shelter response going forward, we have agreed to have this follow-up meeting to discuss and validate the “Needs and Gaps Analysis” to include cluster members’ perspectives while seeking your input to help define the cluster’s strategic direction, agenda, and priorities on required coordination services that may enhance our collective contribution.

02. Action Points | Update

- Share meeting presentation & minutes and presentation | **Shared**
- Organise a follow-up meeting (Thursday, 5 February 2026) | **Done**
- Engagement with the Philippines Disaster Relief Foundation | PSC | **Ongoing**
- Revisit the 5W's reporting and mapping process | PSC + OCHA | **Ongoing**
- Develop guidance on concrete and masonry construction techniques for house repair and reconstruction | TWiG: IOM + Care | **Planned: 3W February**

Organisations that expressed interest in being TWiG Members:

PSC (Convenor); IOM (Lead); Care (Co-lead); IFRC; United Architects of the Philippines (Resilience Architects/Emergency Architects); Habitat for Humanity International; Philippine Red Cross; Build Change; ASEP; PICE

02. Action Points I Update

- Update the Philippines Shelter Cluster's Recovery Shelter Guidelines and Intervention Options I PSC Coordination team with SAG I **Ongoing**
- Consult and assess humanitarian partners' capacity, availability and willingness to take on the responsibility of PSC Sub-national coordination, to establish and deliver practical coordination services in the most impacted areas I PSC Coordination team + Humanitarian Partners I **Ongoing**

IOM has expressed interest and capacity to deliver Shelter Cluster coordination services, at the sub-national level, covering the following affected areas: Bicol Region (Typhoon Uwan); Cebu (Typhoon Tino); and Negros (Typhoon Tino)

Due process: coordination and validation with DHSUD & PSC SAG

03. Needs and Gaps Analysis I Validation I Open Discussion:

- To what extent do you agree with our assessment of the situation?
- How do you think your organization is contributing / may be able to contribute to addressing identified shelter needs and perceived gaps?
- What coordination support can we provide to inform ongoing/planned shelter assistance interventions, as well as to help close the gaps?

Recovery Policy Framework



POST-DISASTER SHELTER RECOVERY POLICY FRAMEWORK

Building a Responsive System to Support Resilient and Equitable Recovery in the Philippines

ANNEX 2: MENU OF POST-DISASTER SHELTER MODALITIES

Phase	Code	Shelter Modalities	Form of Assistance		Feasibility		Current examples
			Financial assistance	Technical assistance	Location	When most appropriate	
Emergency shelter	ES-1	Evacuation centers	• Government or NGO funding	• Government or NGO management	• In evacuation centers, formal and ad hoc	• Severe disasters • Evacuation centers available	• DSWD Protection, Camp Coordination and Management Cluster
	ES-2	Host families	• NA	• NA	• At host family	• Severe disasters • Vulnerable populations	• (Informal arrangements)
	ES-3	Shelter in place	• NA	• NA	• At household location	• Less severe disasters • Dispersed population, sudden onset	• (Common Use)
Temporary/transitional shelter options	TS-1	Host families	• None of conditional grant to hosting families	• None • Government/ NGO support to hosting process	• At host family	• Early recovery period • Space available	• (Informal arrangements)
	TS-2	Self-settlement	• None • Materials distribution or unconditional grant to household • In-kind provision of transitional shelter structure	• None • Minimal guidelines	• In-situ or relocated site	• Materials and tools available • Own site suitable or other site available	• NHA Home Materials Assistance, Rental Assistance/ Housing/ Housing voucher system
	TS-3	Temporary housing	• Government or NGO/NGO funding	• Government or NGO managed • Unmanaged	• In-situ or relocated site		• DSWD/DPWH bumbhouses
	TS-4	Collective centers	• Government or NGO/NGO funding	• Government or NGO managed • Unmanaged	• Public or private building (motel, etc.)	• Extreme weather • Buildings available	• (None?)
	TS-5	IDP Camps	• Government or NGO/NGO funding	• Government or NGO managed • Unmanaged	• Public or private land	• Extreme damage • Relocation required • Short-term use (3 months or less)	• DSWD Protection, Camp Coordination and Management Cluster

Phase	Code	Shelter Modalities	Form of Assistance		Feasibility		
			Financial assistance	Technical assistance	Location	When most appropriate	Current examples
Multi-family housing	MF1	Unassisted repair/reconstruction	• None or unconditional grant to household	• None	• Generally in-situ	• Smaller-scale disasters • Lack of access for oversight • Quality construction practices the norm	• Unassisted recovery
	MF2	Owner-managed repair/reconstruction with technical support	• Conditional grant to household • Access to loan for household	• Technical oversight • Training of household and builders	• In-situ or relocated site	• Large or small-scale impact • Households dispersed • Community mobilization difficult	• Emergency Shelter Assistance (ESA) • NHA HOMA • CMP • NGO projects
	MF3	Community-managed repair/reconstruction w/ technical support	• Conditional grant to household or community group • Access to loan for households	• Technical oversight • Training of community, households and builders	• In-situ or relocated site	• Large-scale impact • Households concentrated • Good social fabric/ solidarity	• DSWD Core Shelter • KALAH-CIDSS • CMP • NGO projects
Single family housing	SF-4	Agency managed/contractor-built construction	• Government or non-government funds to hire contractor • Access to loan for households	• Limited or none	• In-situ or relocated site	• For infrastructure and site improvements • High-density, multi-family reconstruction • Complex construction	• NHA resettlement projects • NGO projects
	SF-5	Resettlement/relocation (formally combined with other approach)	• Government/ LGU financed Alternatives: • Cash or voucher for rental assistance • Conditional cash transfer to household to acquire alternative building site	• Agency-managed relocation	• Relocated site	• In-situ recovery is not an option • No on-site risk mitigation option • Community prefers to be relocated	• NHA resettlement projects • NGO projects
	SF-6	Basic service provision and cost	• Direct National government/ LGU financing • NGO funding	• Direct National government/ LGU provision • NGO provision	• Affected infrastructure and shelter sites	• When required to restore basic infrastructure and ensure safety of shelter sites	• DPWH/LGU infrastructure reconstruction and DRR projects

Phase	Code	Shelter Modalities	Form of Assistance		Feasibility		
			Financial assistance	Technical assistance	Location	When most appropriate	Current examples
Multi-family housing	MF1	Assistance to landlords	• Conditional grant for repair/reconstruction/ construction • Access to loan	• Landlord registration • Design assistance • Construction oversight	• In-situ (landlord's site)	• Uninsured properties • Willingness to rent to IDP tenants • Housing repairable or in-situ reconstruction	• NA
	MF2	Assistance to tenants and other households	• Cash or voucher for rental assistance • Moving allowance	• Beneficiary registration • Subsidy administration	• Existing rental housing	• Urban contexts • Rental market has absorption capacity • Households are relocating	• Donor/NGO rental subsidy projects

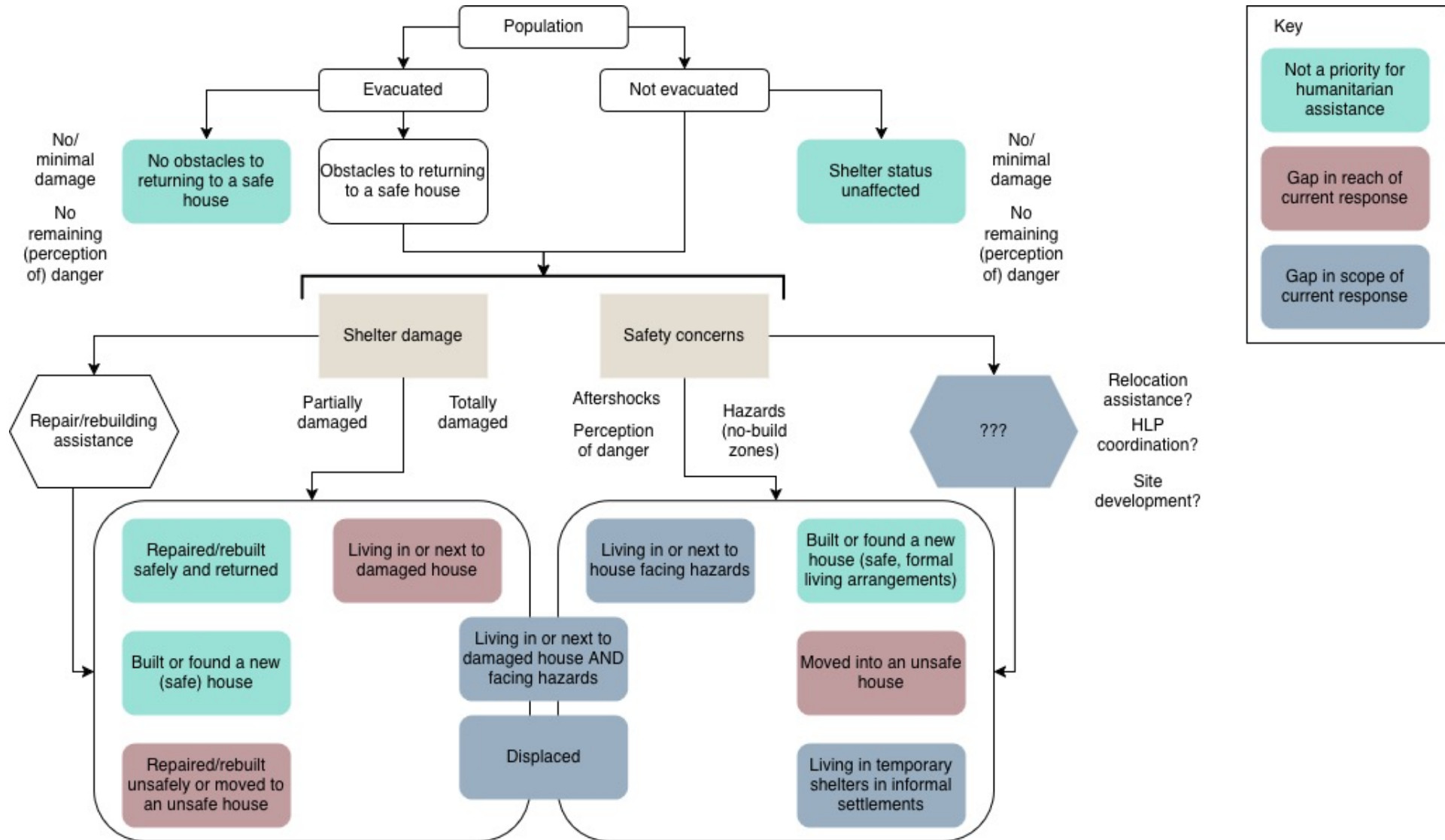
Recovery Policy Framework

Phase	Code	Modality	Form of Assistance
Emergency	ES-1	Evacuation Centers	Government or NGO funding/management
	ES-2	Host families	NA
	ES-3	Shelter in place	NA
Temporary/ transitional	TS-1	Host families	None or conditional grant to hosting families
	TS-2	Self-settlement	None or government/NGO support to hosting process
	TS-3	Temporary housing	None/materials distribution or unconditional grant to household/in-kind provision of transitional shelter structure
	TS-4	Collective centers	Government or NGO funding/management
	TS-5	IDP camps	Government or NGO funding/management
Permanent Shelter Recovery Options	SF-1	Unsupported repair/reconstruction	None or unconditional grant to household
	SF-2	Owner-managed repair/reconstruction with technical support	Conditional grant/access to loan/technical oversight and training
	SF-3	Community-managed repair/reconstruction w/ technical support	Conditional grant/access to loan/technical oversight and training
	SF-4	Agency-managed/contractor-built construction	Government or NGO funds to hire contractor/access to loans
	SF-5	Resettlement/relocation (Normally combined with other approach)	Government/LGU financed/cash or voucher for rental assistance/conditional cash transfer to acquire site
	SF-6	Basic service provision and DRR	National government/LGU/NGO funding and provision

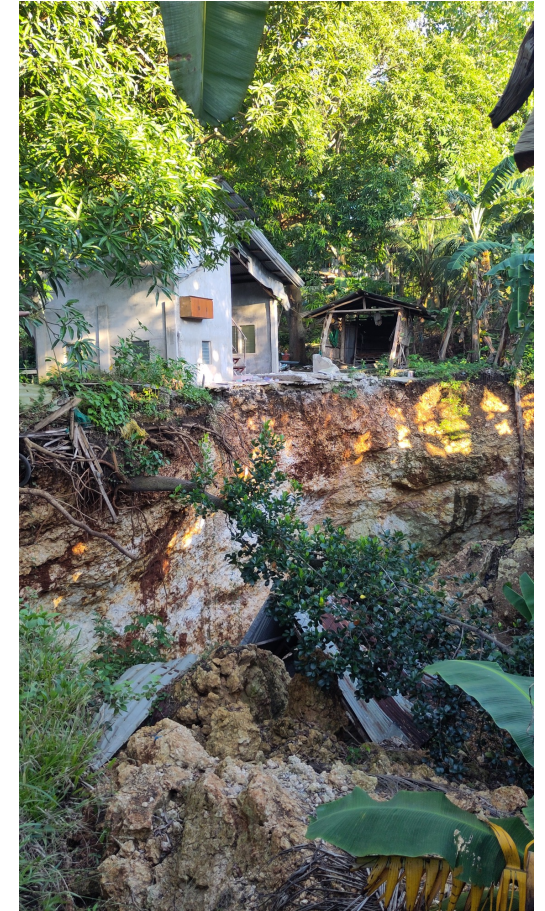
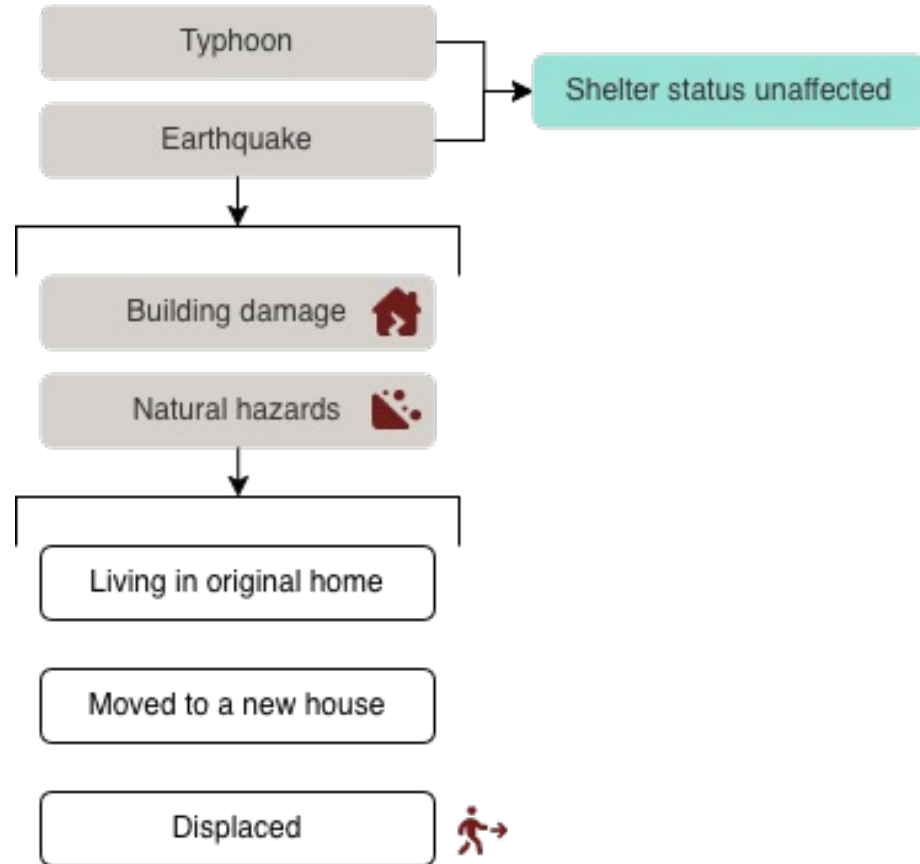
Recovery Policy Framework

Phase	Code	Modality	Form of Assistance
Permanent Shelter Recovery Options – Multi-Family Housing	MF-1	Assistance to landlords	Conditional grant for repair or reconstruction/access to loan/landlord registration/design assistance/construction oversight
	MF-2	Assistance to tenants and other households	Cash or voucher for rental assistance/moving allowance/beneficiary registration/subsidy administration

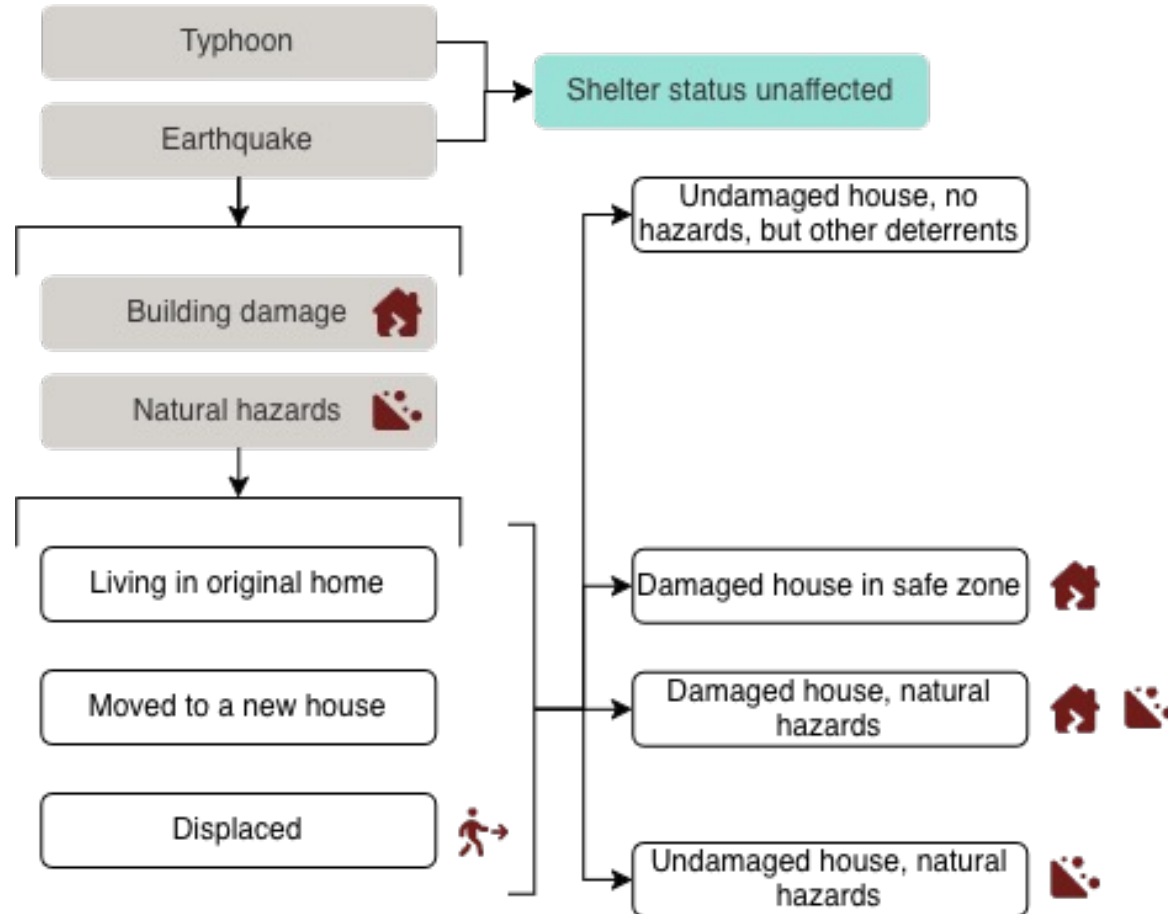
Needs and Gaps Analysis



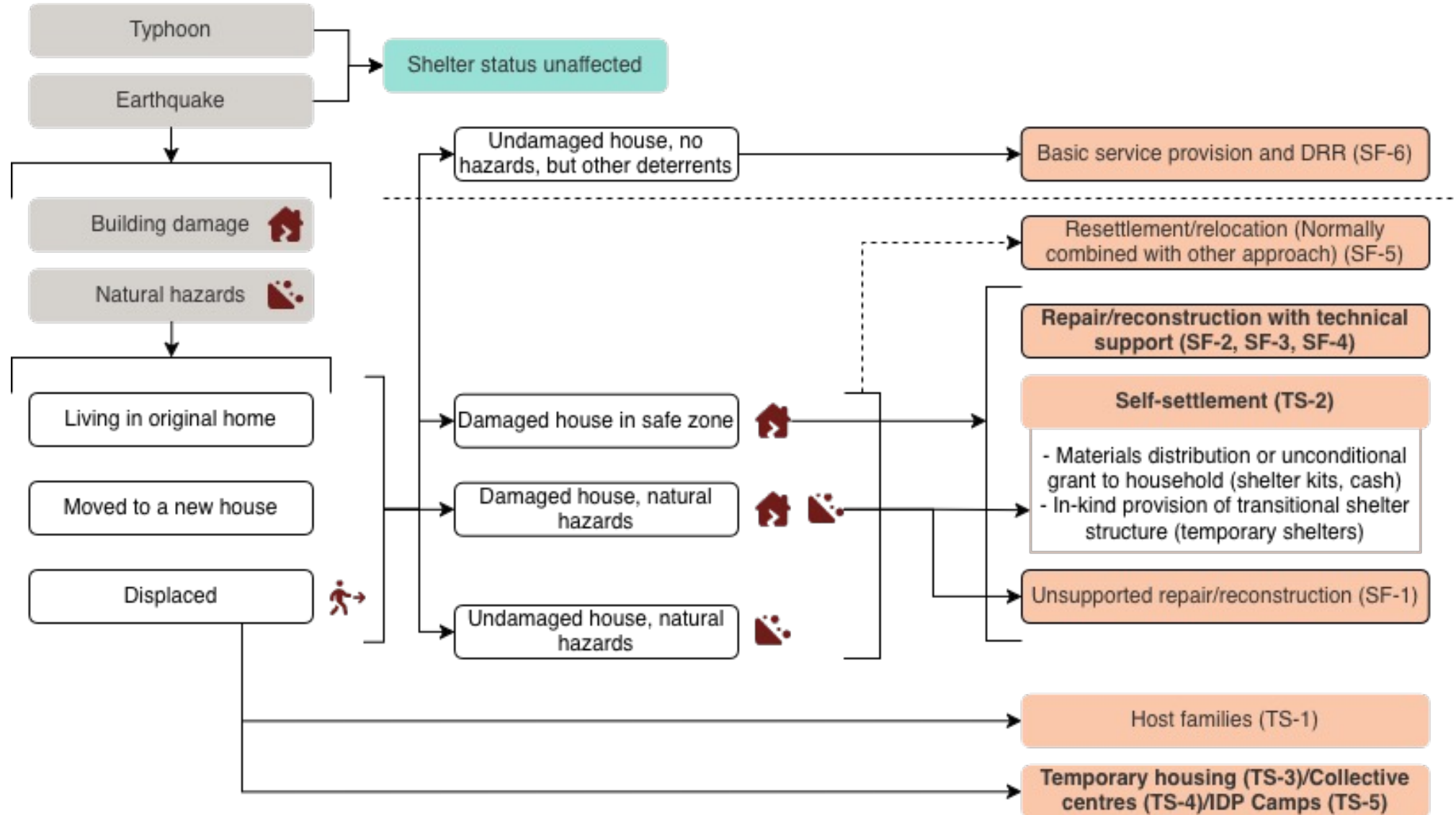
Needs and Gaps Analysis



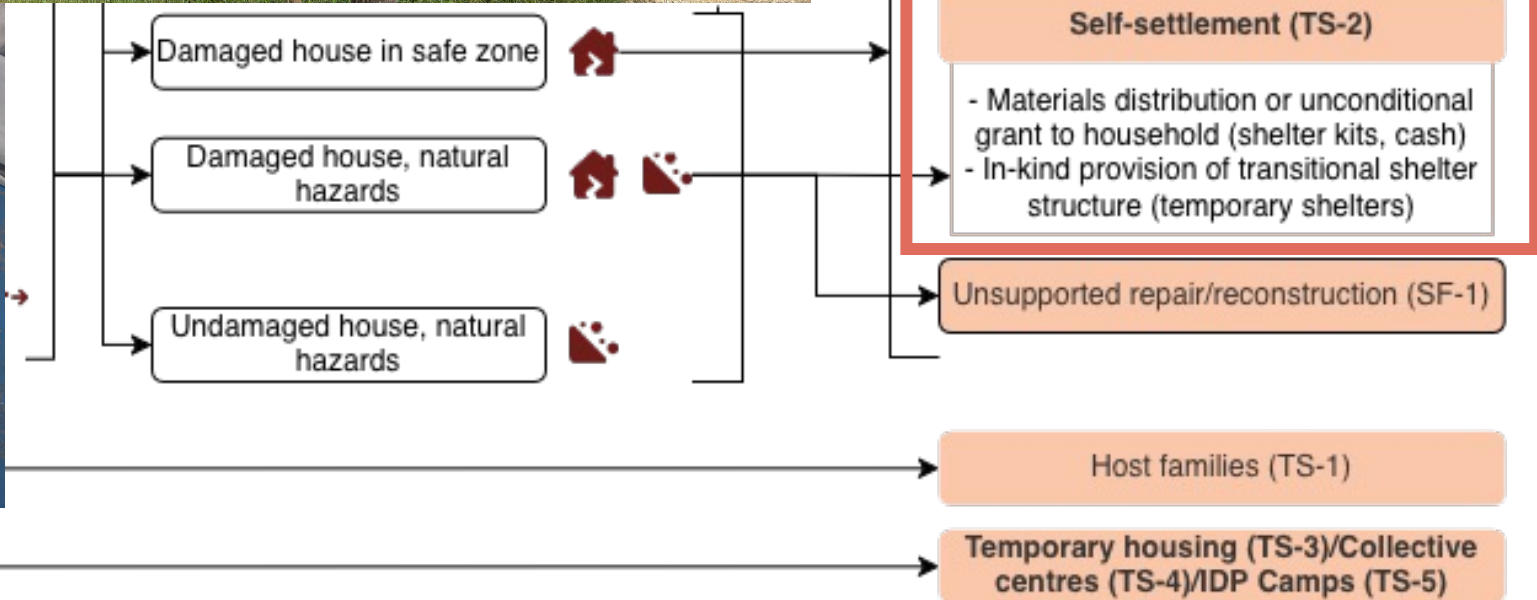
Needs and Gaps Analysis



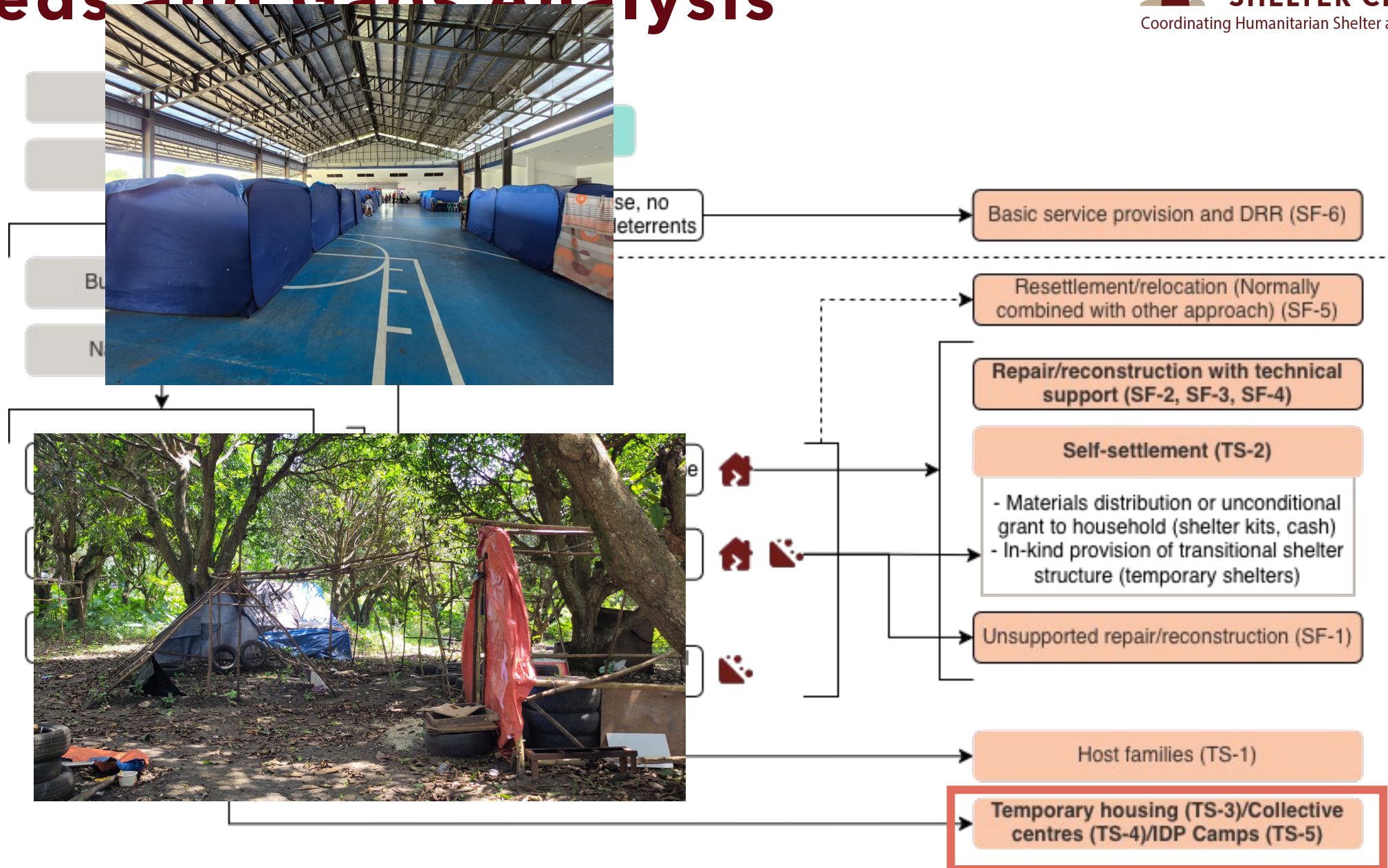
Needs and Gaps Analysis



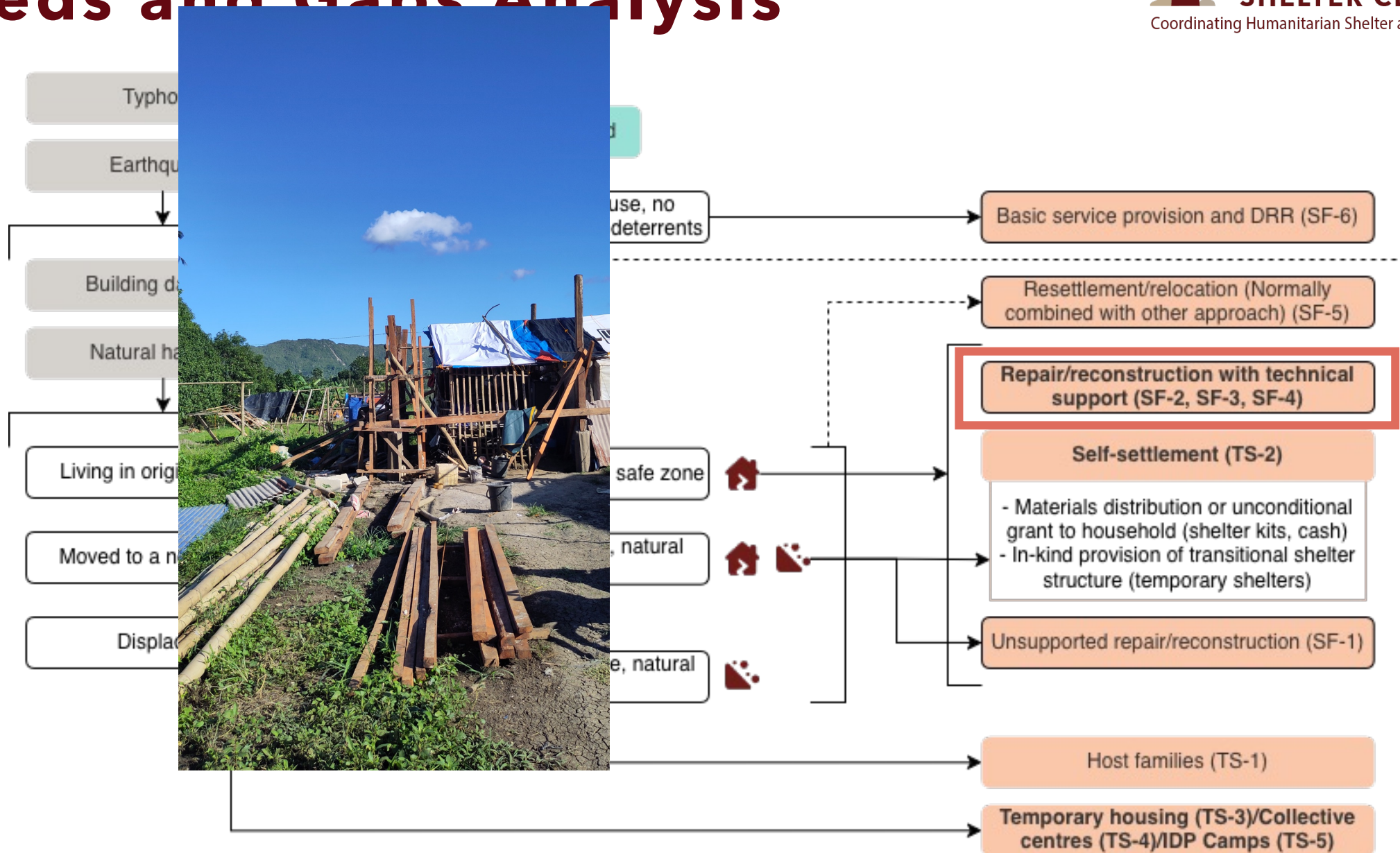
Needs and



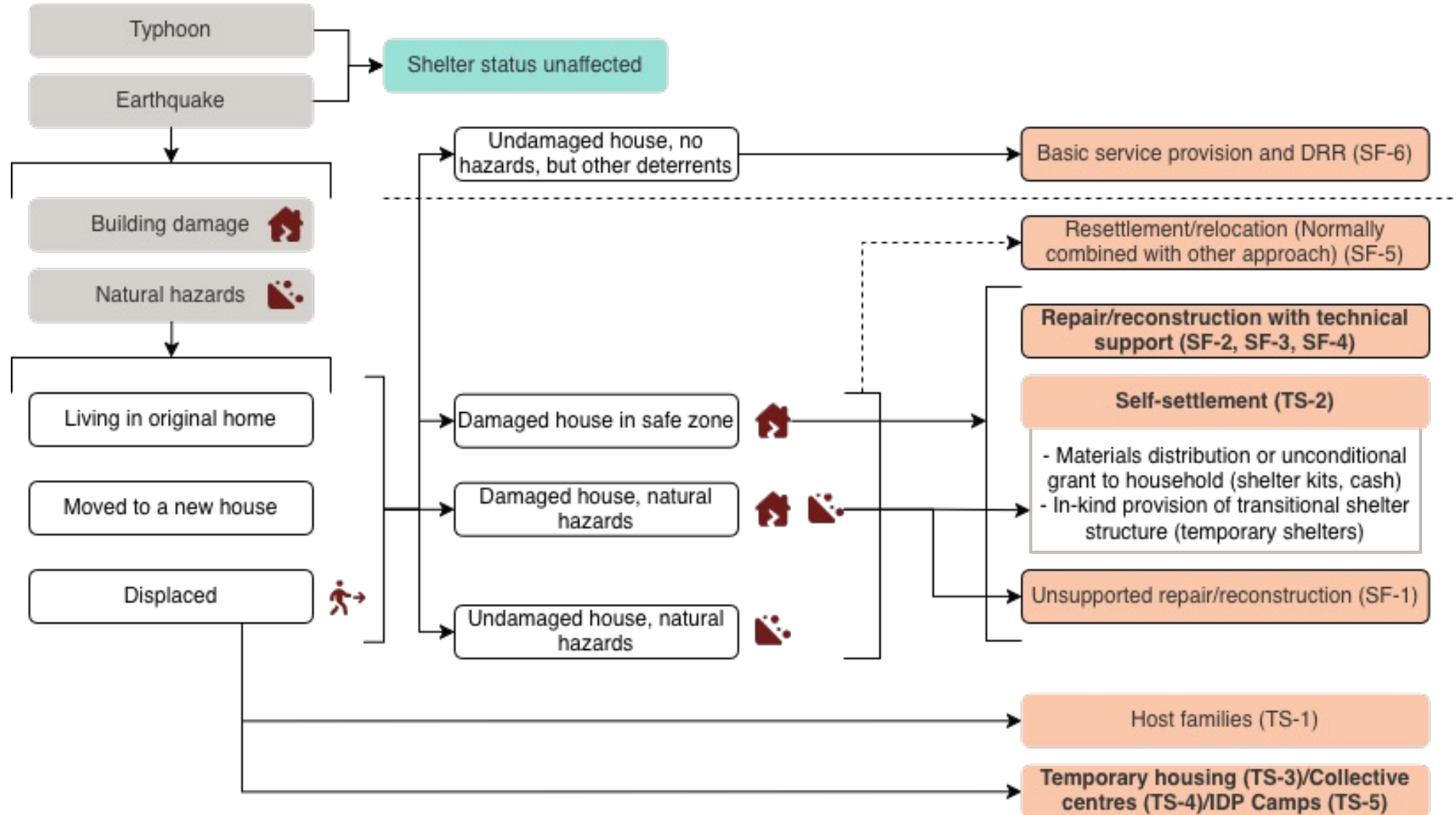
Needs and Gaps Analysis



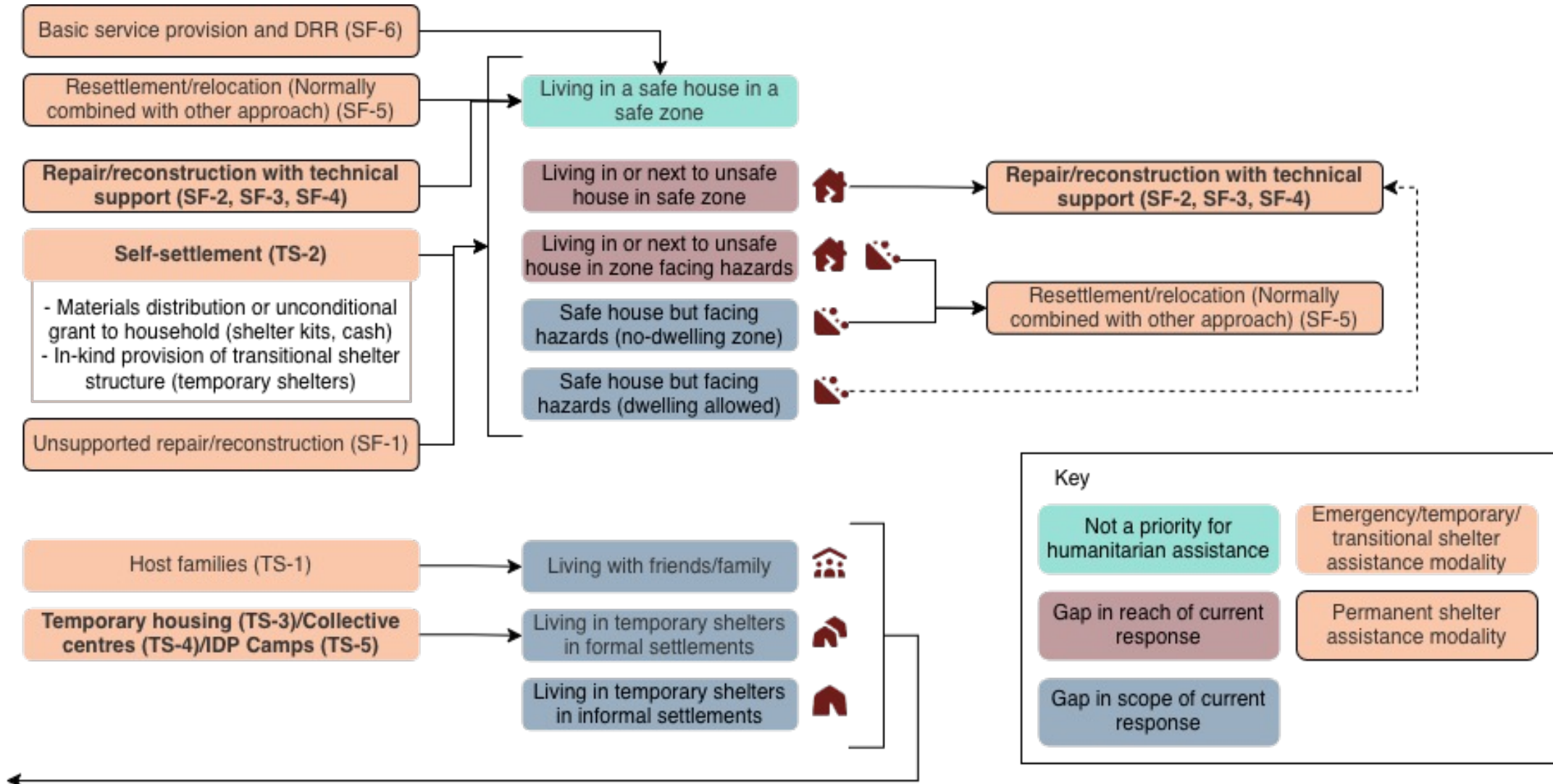
Needs and Gaps Analysis



Needs and Gaps Analysis



Needs and Gaps Analysis



Needs and Gaps Analysis

Unsafe house, safe zone

- Self-settlement/self-recovery
- Repair/reconstruction with technical support

Unsafe house, unsafe zone

- Temporary shelter assistance
- Resettlement/relocation

Safe house, unsafe zone (no-dwelling zone)

- Temporary shelter assistance
- Resettlement/relocation

Safe house, unsafe zone (dwelling allowed)

- Repair/reconstruction with technical support – e.g., retrofitting

03. Needs and Gaps Analysis I Validation I Open Discussion:


- To what extent do you agree with our assessment of the situation?
- How do you think your organization is contributing / may be able to contribute to addressing identified shelter needs and perceived gaps?
- What coordination support can we provide to inform ongoing/planned shelter assistance interventions, as well as to help close the gaps?

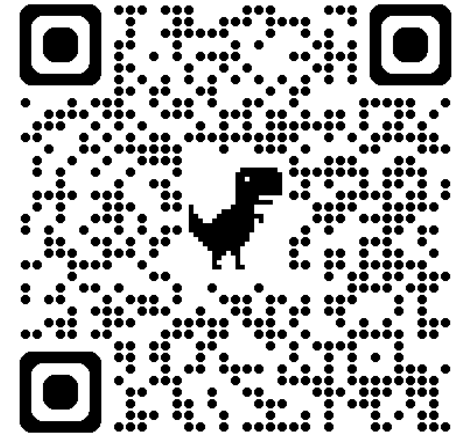
04. AOB

Scheduled Technical Working Group(s) meetings

Next PSC HP coordination meeting -> 19 February 2026

Resources

- [5Ws dashboard](#)
- [5Ws information](#) 
- [DROMIC sitreps](#)
- [NDRRMC dashboard](#)
- [Post-Disaster Shelter Recovery Policy Framework](#)
- [Philippines Shelter Cluster's Recovery Shelter Guidelines](#)





PHILIPPINES
SHELTER CLUSTER

Coordinating Humanitarian Shelter and Settlements

Thank you



PHILIPPINES
SHELTER CLUSTER

Coordinating Humanitarian Shelter and Settlements