

**S/NFI Cluster Sudan**  
ShelterCluster.org  
Coordinating Humanitarian Shelter

# Shelter & NFI Cluster Coordination Meeting

---

**Khartoum • Sudan • 27th Feb. '23**

- State **updates**
  - **Al Takamol** fire/ **Nivasha** relocation **update**
  - **Medair** presentation on **Blue Nile** assessment findings
  - **PDM** KoBo tool **presentation**
  - **AOB**
-



- In **CD**, **870 HH** were supported with **shelter and NFI kits** by cluster partners (**SCI, DRC**) at Oumo, Tuktuka & Juhuma areas.
- Through CBIs, **500HH** were supported with the initial instalments for the **cash for shelter** in **WD**.
- FUZ supported **288 new refugee households** with NFIs kits. Due to shortage of some household items, the targeting was partial.
- Distribution of **113 NFI kits** which were prepositioned for the **UMS Refugee Camp** in **CD** is ongoing.
- In **SD**, **1850 HHs** lost their homes to the fires ignited by an inter-communal armed conflict in **Beleil** locality. **18 villages** have been affected. **HAC** has supported **370 HH** with **ESKs** while **4 temporary communal shelters** has been built in Duma, Otash and Derejge. **Flood response** is still ongoing **UPO** and **NCA** in **Otash IDP** camp and new resources are on the way from **IOM's RRF** for **Es Salam IDPs** affected by flood.
- **7,354 NFI kit** planned for prepositioning to **Beleil, Al Lait, Ed Daein** and **El Sharif** respectively.
- **111HH** have been affected by the fire in **El Genina**. Prepositioning of materials is in progress for the immediate distribution. Partial SNFI kits will be distributed according to available stocks with plans to supplement in the incoming days.

- **Fire incidents** are on the increase, accidental at the household level and through arson attacks.
- **Shortage of ESK & NFI kits** to respond to affected communities.
- **Shortage of resources and capacity** to respond to emerging and current needs as partners reported funding gaps for 2023.
- **Delay** in the prepositioning of SNFI kits.
- **Crime** in the state towns has been on the increase.
- **Insecurity has affected access** for propositioning NFIs for response to conflict-affected communities in Central Darfur.
- **Politically-related constraints** and continuities were affecting the provision and delayed assistance of Geneina gathering sites.
- **The lack of storage facilities** within central Darfur has affected the prepositioning of NFIS and subsequently affected the timely response.



- On **Feb. 22** fire broke out in **Difra market** – people lost everything including their livelihoods
- **70 – 100 houses** completely burned – verification ongoing
- **UNHCR** and **IOM** looking to send items
- **GAH** to support with distribution, reporting and monitoring



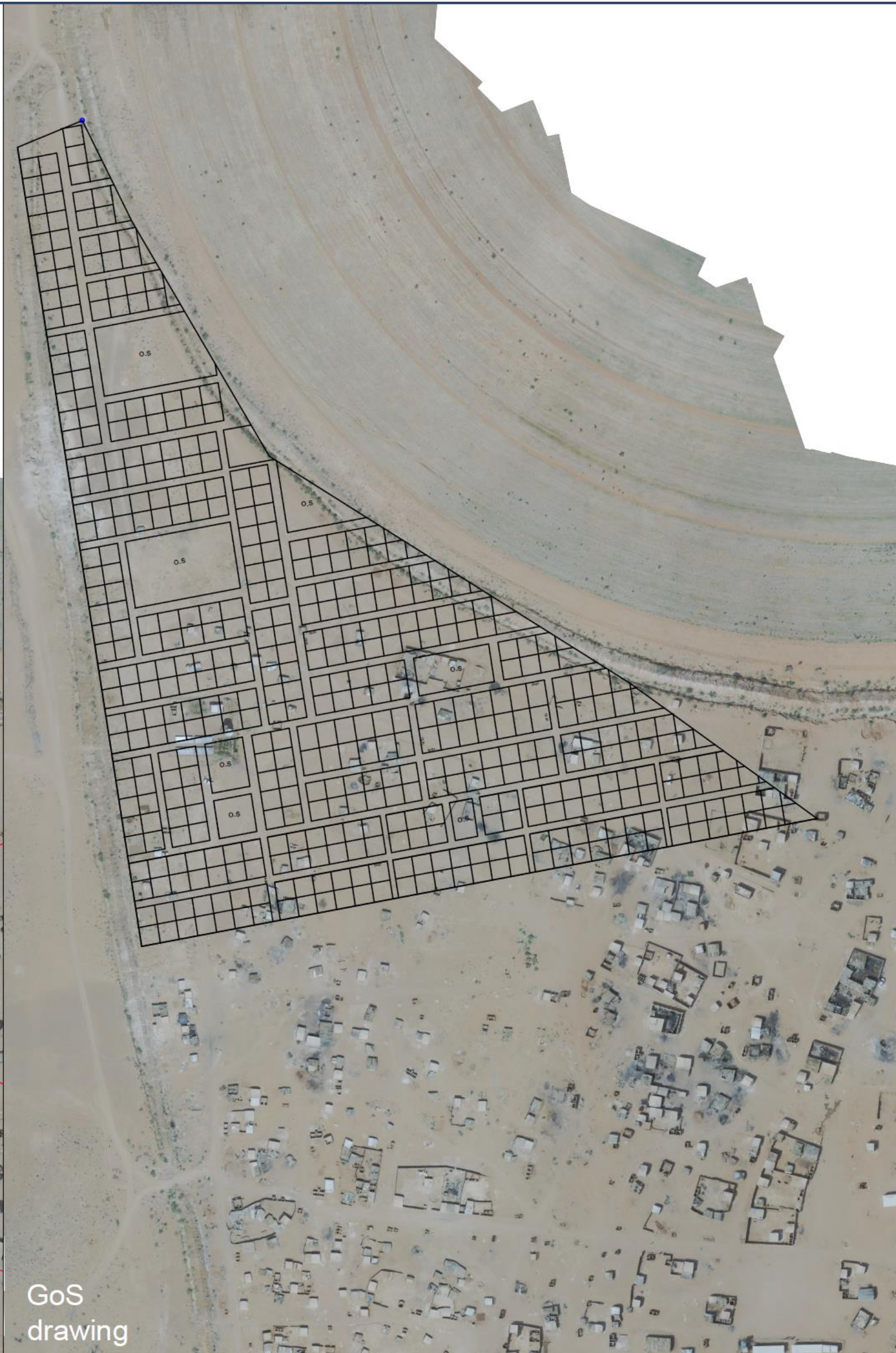
## Nivasha Site Assessment:

- Site is **remote** with **limited livelihood opportunities, services** and **infrastructure**. Conditions in the adjoining **host community** are the **same**.
- **Relations** between the host community and refugees are **good** and there is a lot of **mixing** between the two populations which provides **opportunities for investments** that can benefit **both populations**.
- The site is **not congested**, and most refugees live in **mud-brick shelters**. The **water and sanitation** situation is perceived as being **good**.
- The site is **flat** and there is a **flood risk**, so DRR measures are necessary.
- There is also a need for **solar street lighting** and access to electricity.





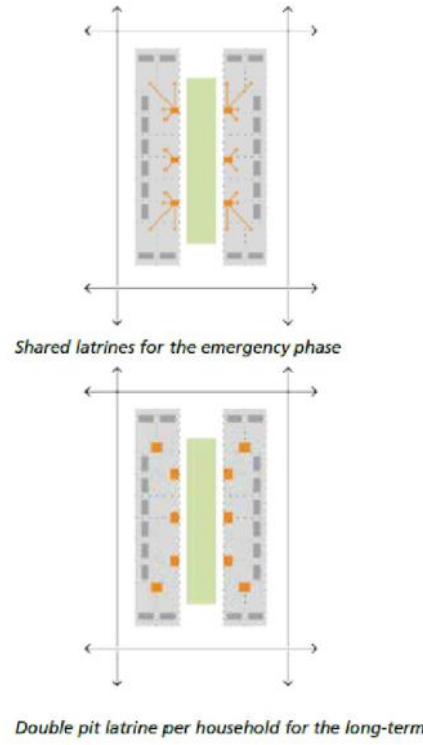
UNHCR  
drawing



GoS  
drawing



Illustrative incremental housing 2D model



**Residential Block Design**

Sustainable Urban Drainage

Urban Agriculture

Decentralised Renewable Energy

Individual Plot Water Provision

Incremental Housing

Active Streets & Public Space

Walkable Block Scale

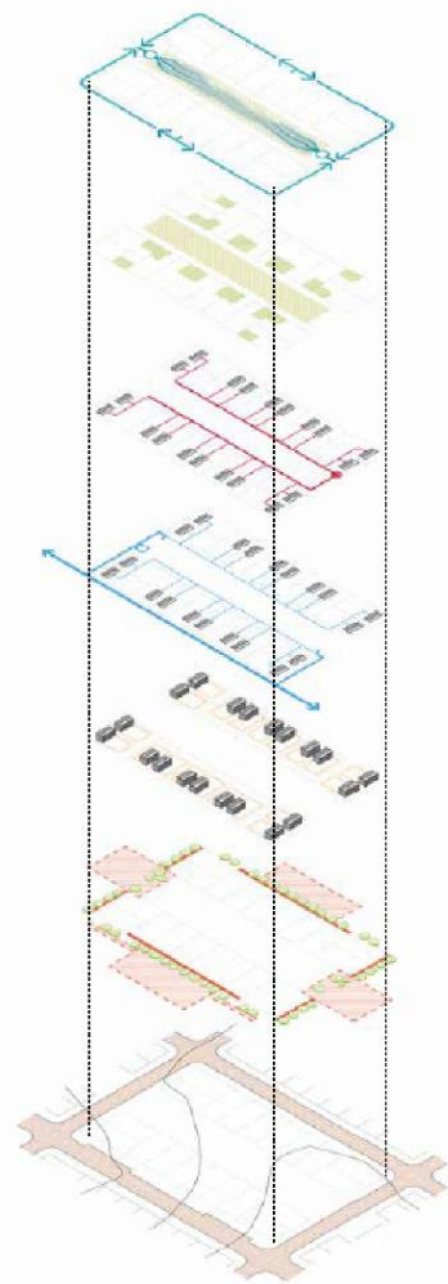


fig.146. Residential block design  
 148



Intention Survey\_AI\_Takamol Report / Locality Shag Al Neel / Location: Al Takamol Open Area

Data: 22/23 Feb 2023

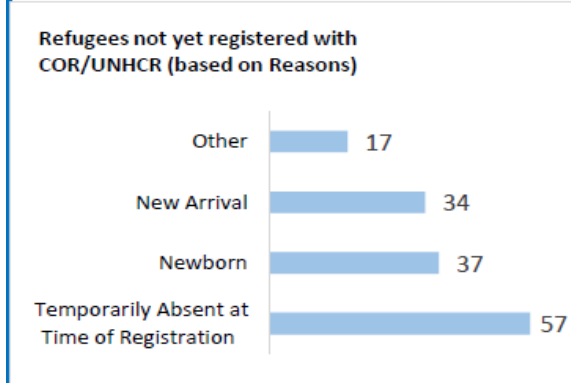
Agencies Participated in the Survey

COR/UNHCR PDE NRC Community REP

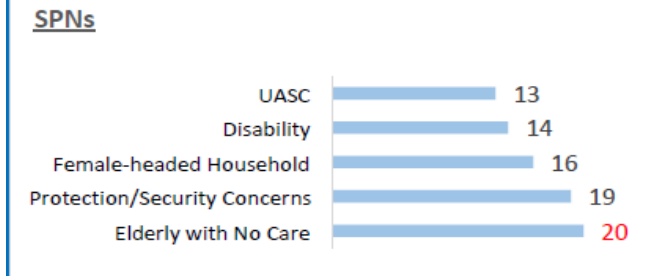
Summary	Total of PoCs conducted the Survey	364	Willing to return back to South Sudan	59%
	No. of Enumerator	20	In need for Cash Grant	31%
	Unwilling to move to Naivasha	95%	The Most Residents at Al Takamol from (Zanda/Shullik/Balanda.) mainly from Bahr El Gazal states)	
	Refugees working at Shag Al Nile locality	72%	The top 3 relocation concern (Health/Education/food)	

## 1. Identification

Unregisterer SSR at Al Takamol Open Area **144**



### Specific needs in Household:



## 2. Demographic information

Average age of respondents **46**

Breakdown per Gender and Marital status

# of Female	# of Male
209	155

Per Marital status

Married	Single	Separated	Widowed
189	47	33	93

I have been in South Sudan (born or lived there, visited, etc) **82%**  
I have never been in South (born or lived there, visited, etc) **18%**

All refugees must leave Al-Takamol Open Area. What are your plans, if not relocation to Naivasha?

Go to South Sudan	59%
Live in another informal place in Sharg An Neel locality	23%
Rent apartment in Sharg An Neel locality	8%
Move to another locality	5%
Go abroad but not to South Sudan	3%
Live with relatives/friend's house in Sharg Al Neel	2%

### Basic demographic information (Place of origin in South Sudan)

Equatoria	Greater Upper Nile (Fashoda State)	Bahr El Gazal	Bahr El Gazal	Equatoria Imatong State	West Bahr El Gazal	Equatoria Jubek state	Bahr El Gazal	Bahr El Gazal	Equatoria (Jubek State)	Bahr El Gazal	Equatoria (Jubek State and Imatong State)	Bahr el Ghazal	Greater Upper Nile	Bahr el Ghazal, Greater Upper Nile	
Zande	Shilluk	Balanda	Ndogo	Acholi	Kerish	Barya	YULU	Banda	Bari	Bongo	Didnga	Lokoya	Kara	Newar	Dinka
45%	16%	14%	7%	4%	3%	2%	2%	1%	1%	1%	1%	1%	1%	1%	0%

### The most 5 Clan at Al Takamol Open Area

Balnda Bazya	Balanda Dem Zubair	Ndogo	Tumbura	fanykawa	Ndogo
--------------	--------------------	-------	---------	----------	-------

## 3. Livelihood

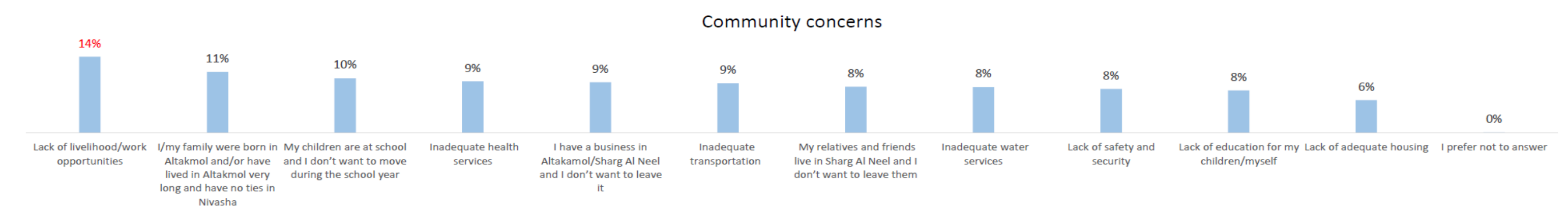
Where the majority of Al Takamol refugees community are working

Day labor (Cleaners, Helpers, constructions, bricks...etc.)	73%
No income	17%
Handicraft (Food preparation, woodwork, beadwork, basketry, other crafts)	7%
Teacher or assistant	1%
Nurse	1%
Humanitarian assistance	0%
Support from abroad	0%
Transport ( Van/Riksha driver, assistant)	0%
Alcohol production	0%

If working, where is your workplace?

Sharg An Neel	72%
Bahri	16%
Khartoum	11%
Um Durman	2%

### The most community concern regarding relocation to Naivasha



What support do you need from the government/organizations to leave here and start your life in another location (not Naivasha)?

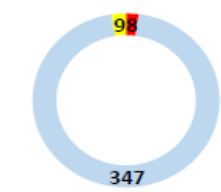
Cash grant	31%
Transportation	22%
Work startup kits /seed money	17%
Documents	16%
NFIs (plastic sheet cooking set/ sleeping mats / jerrycans /solar lamb....Etc )	14%

## 4. Intention to relocate

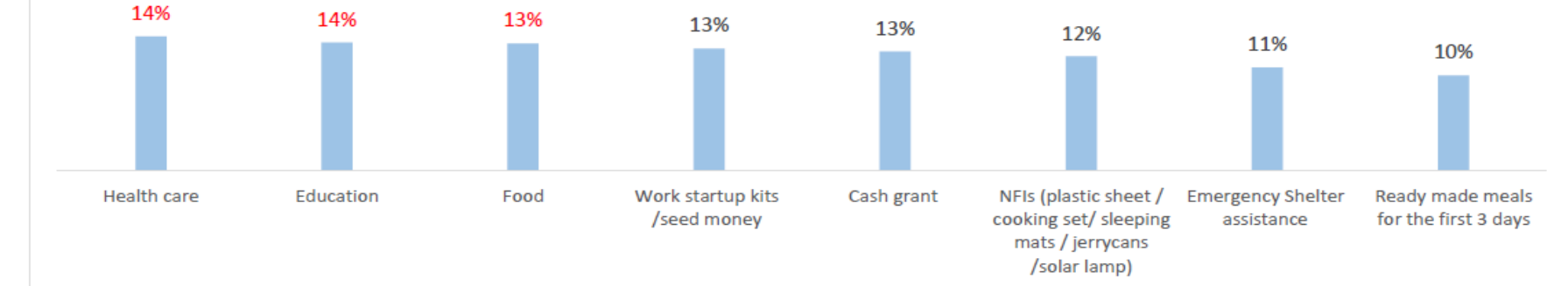
Willingness questions, to relocate to Naivasha Open Area

95%	Unwilling to be relocated to Naivasha
2.2%	Willing be be relocated to Naivasha
2.5%	Not sure right now

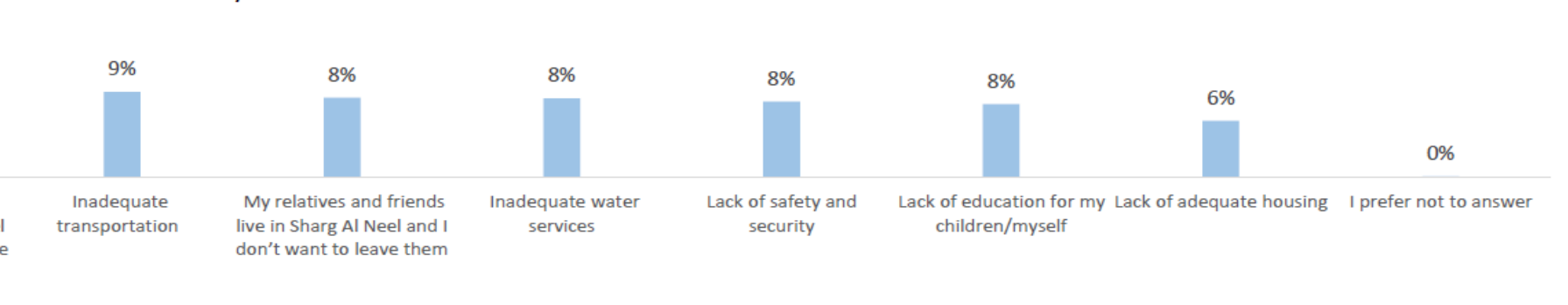
No. of Willing / Unwilling to move to Naivasha



### The most important required helps for the families for selves establishment in Naivasha



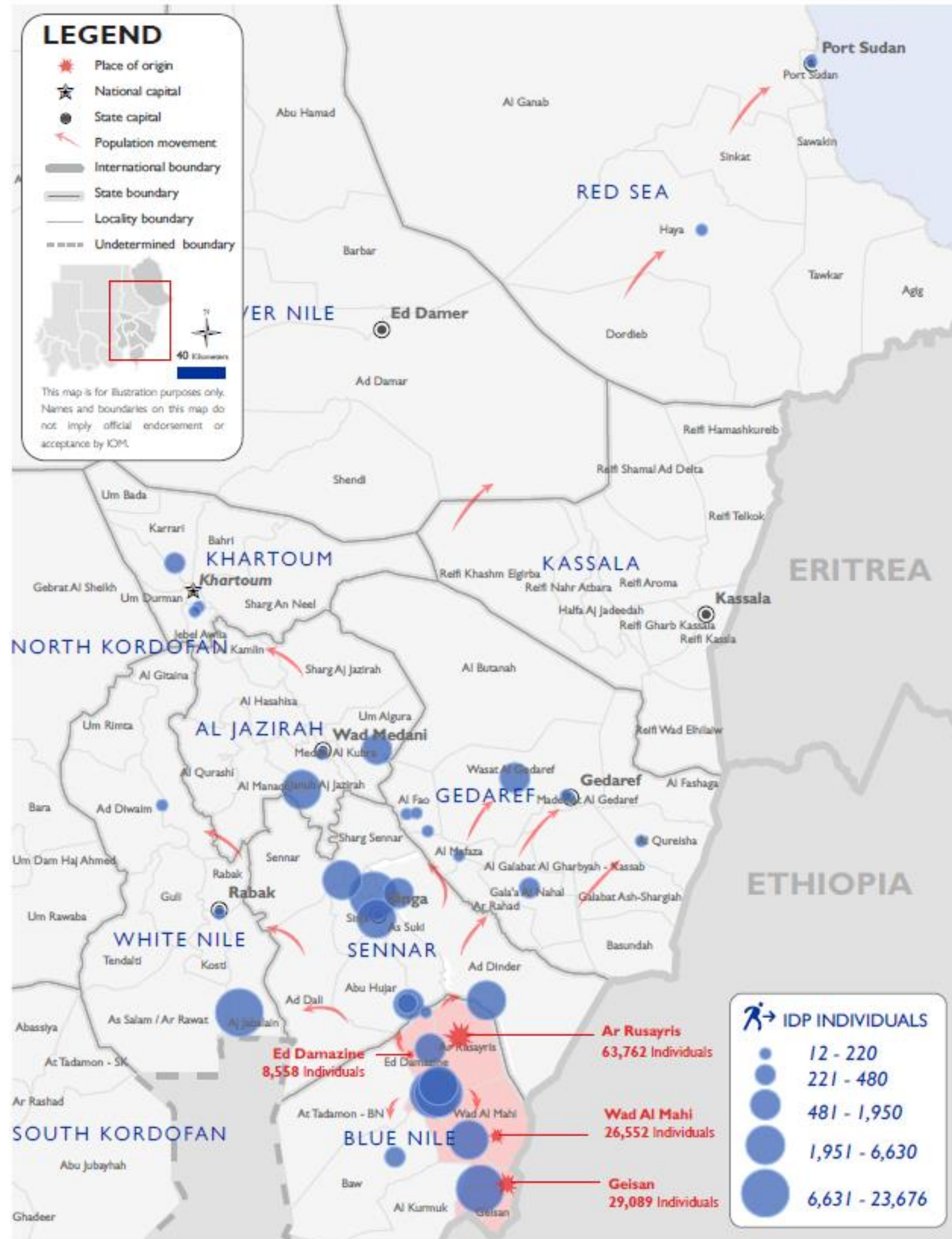
### Community concerns



## 5. Repatriation Intentions

Do you plan to return permanently to South Sudan:

Yes	When			Total
	Within One Year	Within One to Five Years	Someday, but not sure when	
	89	10	214	313
No	Why			Total
	Do not plan to return permanently to South Sudan	Don't know	Prefer not to answer	
	39	7	3	0



Since mid-July, at least 127,961 people have reportedly been displaced. Security situation has generally improved though with sporadic minor clashes

Ongoing intercommunal tension in Blue Nile: On 12 February, conflicts escalated between the Hamaj and Hausa tribes in Village 7 in Wad Al Mahi locality, following a dispute over access to land. One member of the Hausa tribe was reportedly killed. There have been no reports of injuries or displacement so far. The area remains accessible to humanitarian actors. Security forces have intervened to contain the security situation, which remains tense and unpredictable.

IDPs in Damazine sites/school have been returned to their areas of origin particularly Geisan locality supported by the government.

Pending delivery of 4,000 NFI kits from IOM Khartoum to be distributed by ADRA, RAISE and ADD to Geissani, Wad Al Mahi, Damazine and Rusayris according to the November 2022 IRNA.

# **Blue Nile Assessment Findings**

## **Presentation by Medair**

## Why should we conduct PDMs?

- To ensure items distributed were used for the purposes intended, and/or identify whether the items provided were necessary and appropriate.
- To flag any protection risks (including SEA-SH).
- To monitor items delivered by partners including those that are being sold commercially or in exchange for other items as well as to improve (resale may indicate unmet needs or that other unidentified needs have a higher priority).

## What are the timelines and who should be involved in conducting PDMs?

- It should be conducted between 6-8 weeks after each distribution.
- Ideally through a commercial vendor (Third-Party Monitoring) or a partner who was not involved in the needs assessments or distribution.

## What are the some of the benefits of conducting PDMs?

- Feasibility of conducting joint data analysis by comparison between geographic regions and type of items distributed.
- Findings are key in informing regular readjustment of the NFI response accordingly.

## Way forward

- Roll out of PDM tool (The form is accessible using this link [Kobo Shelter NFI PDM Form](#))
- Capacity building\* (partners to discuss and agree on preferred mode)
- Creation of a Power BI dashboard giving partners access to download raw data.

### Shelter & NFI Sudan Cluster: Kobo NFI in Kind PDM form 2023

Shelter and NFI Cluster Sudan: Post Distribution Monitoring Form (NFI Kit In-Kind)

Date of interview  
yyyy-mm-dd

Hello, my name is [Your name] and I work for [Name of the organization] and we are interviewing individuals that have just received NFI in kind assistance. I would like to ask you some questions about NFI items that were distributed by [Name of the organization] in [Month] of this year. It should take around [Minutes] to complete. If you choose to participate your responses will not change your eligibility for support from [Name of the organization] but will help us find out if you are satisfied with the assistance you received and how this can be improved. This questionnaire does not have "good" or "bad" answers and you can stop the interview at any time or refuse to answer any questions that you don't want to answer. Your identity will remain confidential and will not be revealed to any other group or persons. Your responses will be anonymized and aggregated to improve the response. Would you like to participate in this interview? If [Yes] proceed.

- ▶ A. Household Data
- ▶ B. Non-Food Item (NFI) Kit Data
- ▶ C. Accountability and Information Provision Mechanisms
- ▶ D. Distribution Process
- ▶ E. PROTECTION AND SAFETY RISKS
- ▼ F. Distribution Impact

F. Distribution Impact

F.1 Do what extent has the distribution improved your living condition?  
none selected

F.2 What changed in your life after the distribution?  
none selected

F.3 Any other comments?

