



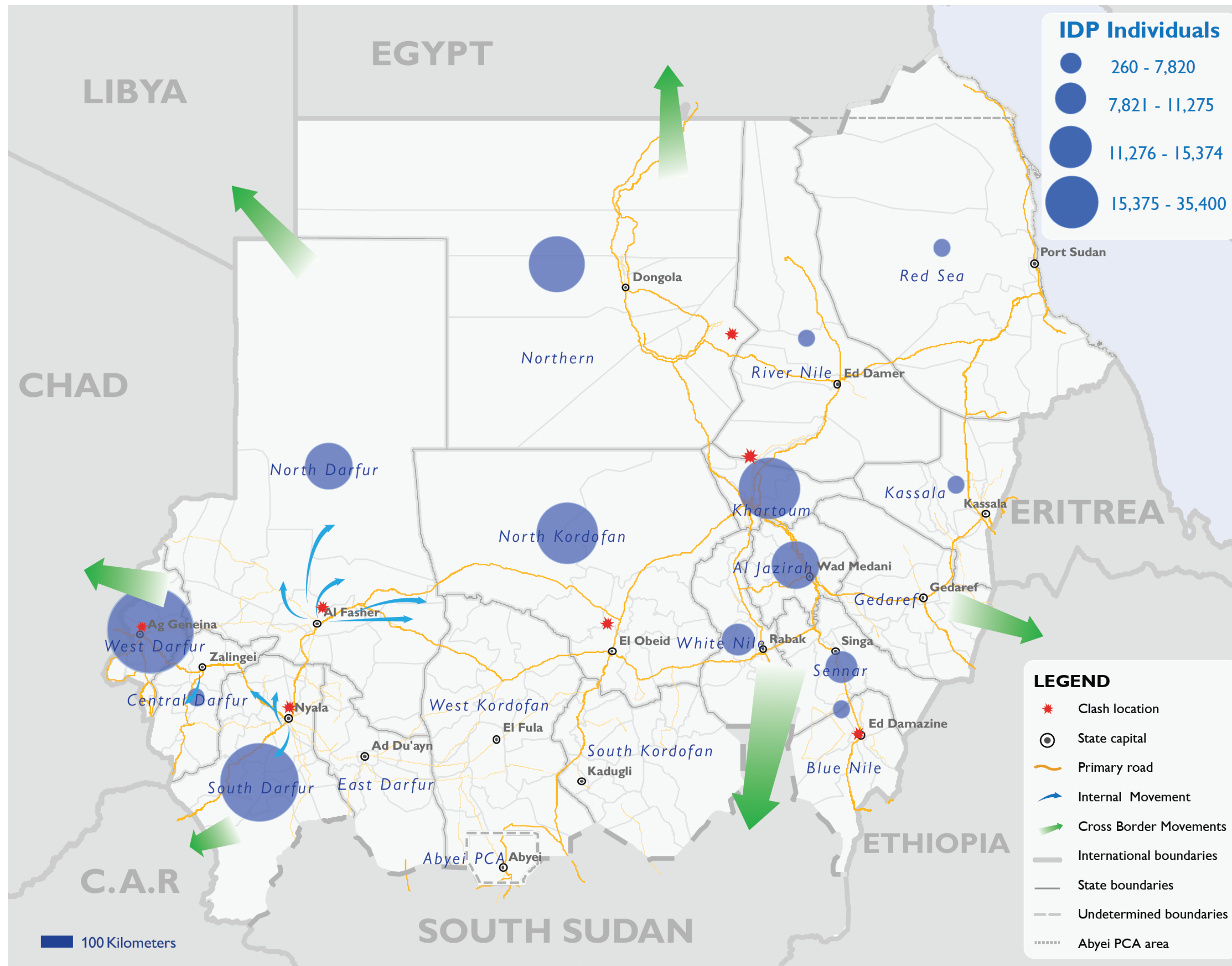
S/NFI Cluster Sudan
ShelterCluster.org
Coordinating Humanitarian Shelter

Shelter & NFI Cluster

Coordination Meeting

MS Teams • Sudan • 9th May
'23

- **Situation Update**
 - **HRP Revision**
 - **Roundtable on Operational Plans**
 - **Interim SAG**
 - **AOB**
-

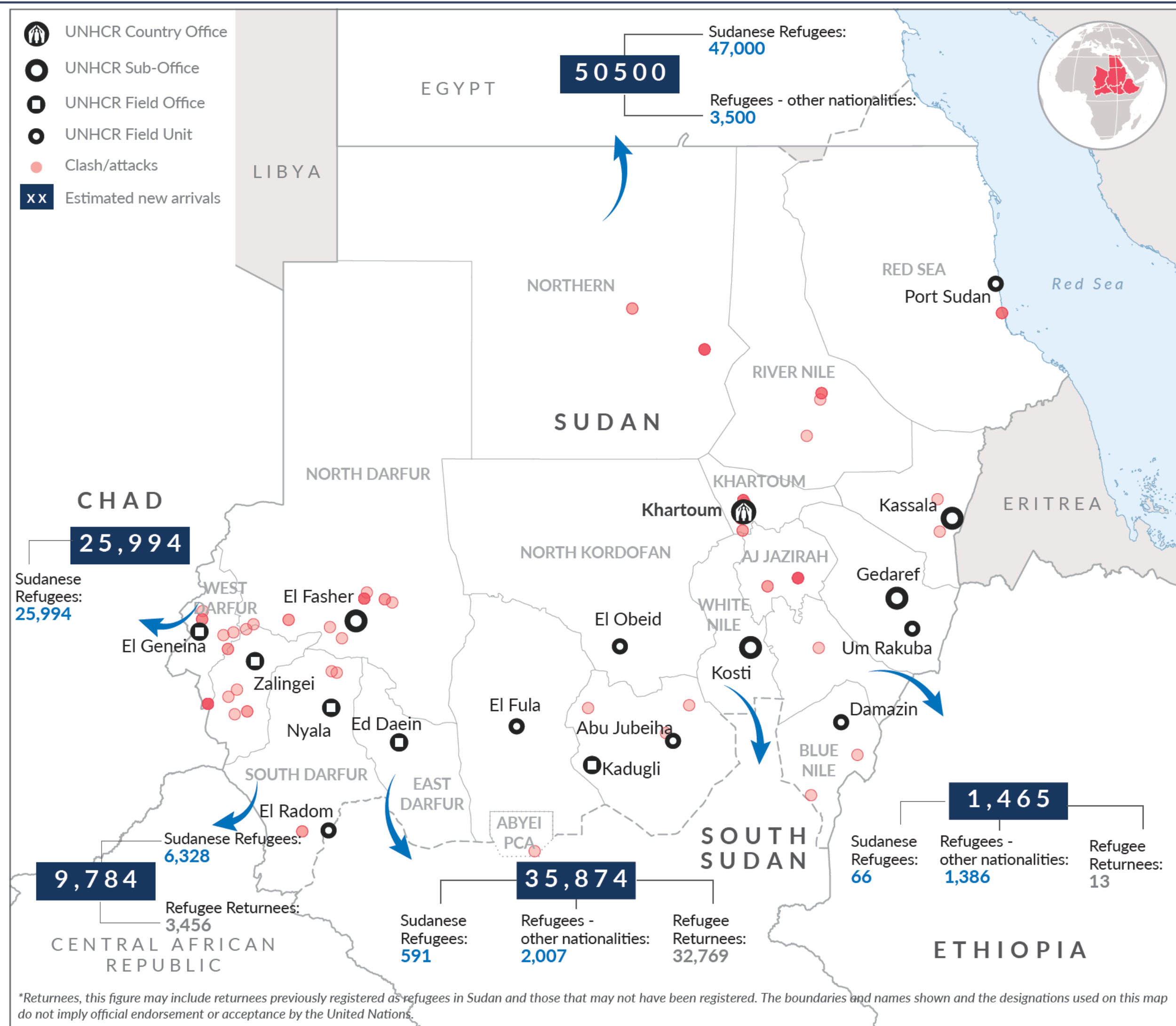


 **334,053**
Internally displaced individuals

- Latest official figures outdated. Most recent unofficial estimates indicate 400,000 newly displaced in Darfur alone.
- In Port Sudan HAC reports that over 16,600 (mostly foreigners) are taking shelter in 22 sites.
- It is very difficult to get number estimates due to insecurity and communications challenges.
- Additionally, population is largely on the move, which complicates matters further.
- Some partners are trying to leverage community-based networks and crowdsourcing to get a better sense of the numbers and needs locally.

Source: IOM DTM, as of 01/05/2023

- Over 120,000 people already fled Sudan. The situation in border areas is extremely challenging, with both Sudanese and non-Sudanese individuals facing harsh conditions. They are staying in overcrowded public buildings or exposed outdoors as they await further relocation opportunities.
- COR and UNHCR continue to monitor movements of refugees internally in Sudan. Thousands of refugees moved out of Khartoum to other states.
- It is estimated 75,000 fled to White Nile, between 5,000 and 6,000 to Aj Jazeerah and close to 3,700 to Gedaref (majority in Um Gulja, followed by Tunaydbah, Um Gargour and Um Rakuba).
- According to RRRP update, UNHCR is planning for an outflow of 860,000 refugees and returnees from Sudan and, with partners, will require US\$445 million to support the displaced until October.



Source: UNHCR, as of 04/05/2023

- Looting of warehouses, offices, trucks en route, and other assets.
- Accessibility issues due to insecurity and fuel shortages (transportation costs skyrocketed) – UNHCR is struggling to access its significant stock due to transporters' reluctance to operate.
- Customs clearance offices not operating – hindering access to items stuck at free zone in Port Sudan as well as impacting future imports.
- Low purchasing power, inflation and lack of basic commodities, including access to public services and utilities (electricity, water, health services, etc.).
- Poor market functionality and low cash liquidity due to disrupted banking services, including mobile money, impacting local procurement and Cash for Shelter/NFI programmes.
- Limited operational capacity and staffing.
- Incoming rainy season.



INGO Forum Assessment Mapping:

State	Locality/Localities	Lead Partner	Other Partners Participating	Type of Assessment	Sectors covered	Target Population
Gedaref	Gedaref town	MC		Market Assessment in preparation for CVA	MPCA, Agriculture, FSL, NFI	IDPs, Host community
Gedaref	Gedaref town	ZOA	GPCO	Rapid need assessment	NFI , food , WASH	IDPs
White Nile	Kosti and Rabak	NRC		Rapid needs assessment	Food, WASH, education, protection,shelter, nutrition,	IDPS
Gedaref	Gedaref town	PUI		Rapid needs assessment	Health, nut, FSL, NFI	IDPs
Al Jazira State	Madani	PUI		Rapid needs assessment	MSNA	IDPs, Host communities
Al Jazira State	Wad Madani	NRC		Rapid needs assessment	Food, WASH, education, protection,shelter, nutrition,	IDPS
Gedaref	Gedaref town and Um Gulja	NRC		RNA (Multi sectoral) : Market Assessment	Food, WASH, education, protection,shelter, nutrition,	IDPs, Refugees
Al Jazira State	Madani	RI		Rapid needs assessment	Health & Nutrition, NFI, MPCA	IDPs
White Nile	Aljabaleen	ADRA		Shelter, FSL, WASH and Protection	Shelter, FSL, WASH and Protection	
White Nile	East Nile &			RNA (conducted via phone with ADRA Community		
Khartoum	Jabal Awliya	ADRA	Alqassim			
North Darfur	ElFasher	GOAL	-	Rapid Needs Assessment	Health	State Hospital

Which option best describes your current occupancy arrangement? *(Select one)*

- Formal/ informal ownership
- Formal/ informal rental arrangement
- Hosted by family/friends
- Hosted by government/institutions
- None/ squatting or sleeping in the open
- Other (specify)

What type of shelter do you currently reside in? *(Select one)*

- Permanent/ finished house or apartment
- Semi-permanent/ mud-brick or adobe shelter
- Emergency/ Rakuba, tent, etc.
- Makeshift/ improvised shelter
- Unfinished/ non-enclosed structure
- Collective/ public buildings, communal shelters, Rubb Halls, etc.
- None/ sleeping in the open
- Other (specify)

Does the shelter currently have any damage? *(Select many)*

- Roof issues (small openings/cracks or partial collapse)
- Wall issues (cracks or partial collapse)
- Window/ exterior door issues (broken or missing)
- Floor or foundation damage
- Severe structural damage (unsafe for living)
- Total structural collapse
- Other (please specify)
- None

Do you face any of the following issues with your shelter? *(Select many)*

- Rainwater leaks
- Indoor flooding
- Inadequate ventilation or excessive heat
- Poor insulation against cold
- Limited privacy
- Insufficient space or overcrowding
- Inability to lock the home securely
- Other (please specify)
- None

How long do you plan to stay in your current shelter? *(Select one)*

- Short-term/ in-transit – less than a week
- Mid-term – 1 week to 3 months
- Long-term – over 3 months
- Don't know

What are the main barriers to accessing shelter? *(Select many)*

- Lack of financial resources to build or rent a shelter
- Limited availability of shelter options
- Inadequate access to land or property for building a shelter
- Distance or lack of transportation to available shelter options
- Other (please specify)

Please rank the top three energy-related issues your household is currently facing, from most pressing (1) to least pressing (3):

- Difficulty charging mobile phones
- Lack of cooking fuel
- Inadequate lighting
- Time-consuming fuel collection
- Other (please specify)

Does the household currently have access to any of the following NFIs? *(Select many)*

- Plastic sheets
- Blankets
- Mattresses/ sleeping mats
- Kitchen utensils
- Jerry cans/ water containers
- Torches/ solar lamps
- Mosquito nets

What other household items do you critically need? *(Free text)*

- E.g., solar chargers, etc.

OCHA | As of 8 May 2023, 22:55 hrs Sudan time

Deadline	Process/Activity	Outcome	Responsible	Status
5 May	<ul style="list-style-type: none"> ICCG discussed the revision options 	Light HRP revision	OCHA SUD	Done
8 May	<ul style="list-style-type: none"> HCT to endorse the ICCG proposal 	HRP revision endorsed	OCHA SUD	Done 08 May @ 15 hours
8 -9 May	<ul style="list-style-type: none"> Revised template and draft narrative 	Draft narrative initiated with the strategic focus of SO1 & SO2 only.	OCHA SUD	
9 May	<ul style="list-style-type: none"> Revision of baseline data (population figures, IDPs, Refugees, vulnerable residents) 	Final figures shared with the Clusters	OCHA SUD	
10 – 12 May	<ul style="list-style-type: none"> Revision of Clusters PiNs, Clusters revised costing basket, activity costing, and revised targets 	Final Clusters PiNs, targets and estimated Clusters' financial asks shared with OCHA SUD.	Clusters Coordinators	
13 May	<ul style="list-style-type: none"> Revision of overall PiN and Severity and targets and financial requirements 	Final figures shared with the Clusters, HCT	OCHA SUD	
14 May	<ul style="list-style-type: none"> Final drafting of revised 2023 HRP document 	Revised 2023 HRP	OCHA SUD	
13-16 May	<ul style="list-style-type: none"> HRP projects module re-opening and clusters submission of PC1 projects (3 to 6 months maximum) 	Projects uploaded	Partners	
15 May	<ul style="list-style-type: none"> Final HRP document HCT HRP 2023 endorsement 	HRP	OCHA SUD/ HCT	
16 May	Launch of 2023 revised HRP		OCHA	

2023 PiN and Severity/ before SAF-RSF conflict

PEOPLE IN NEED
2.9M

CHILDREN
55%

WOMEN
52%

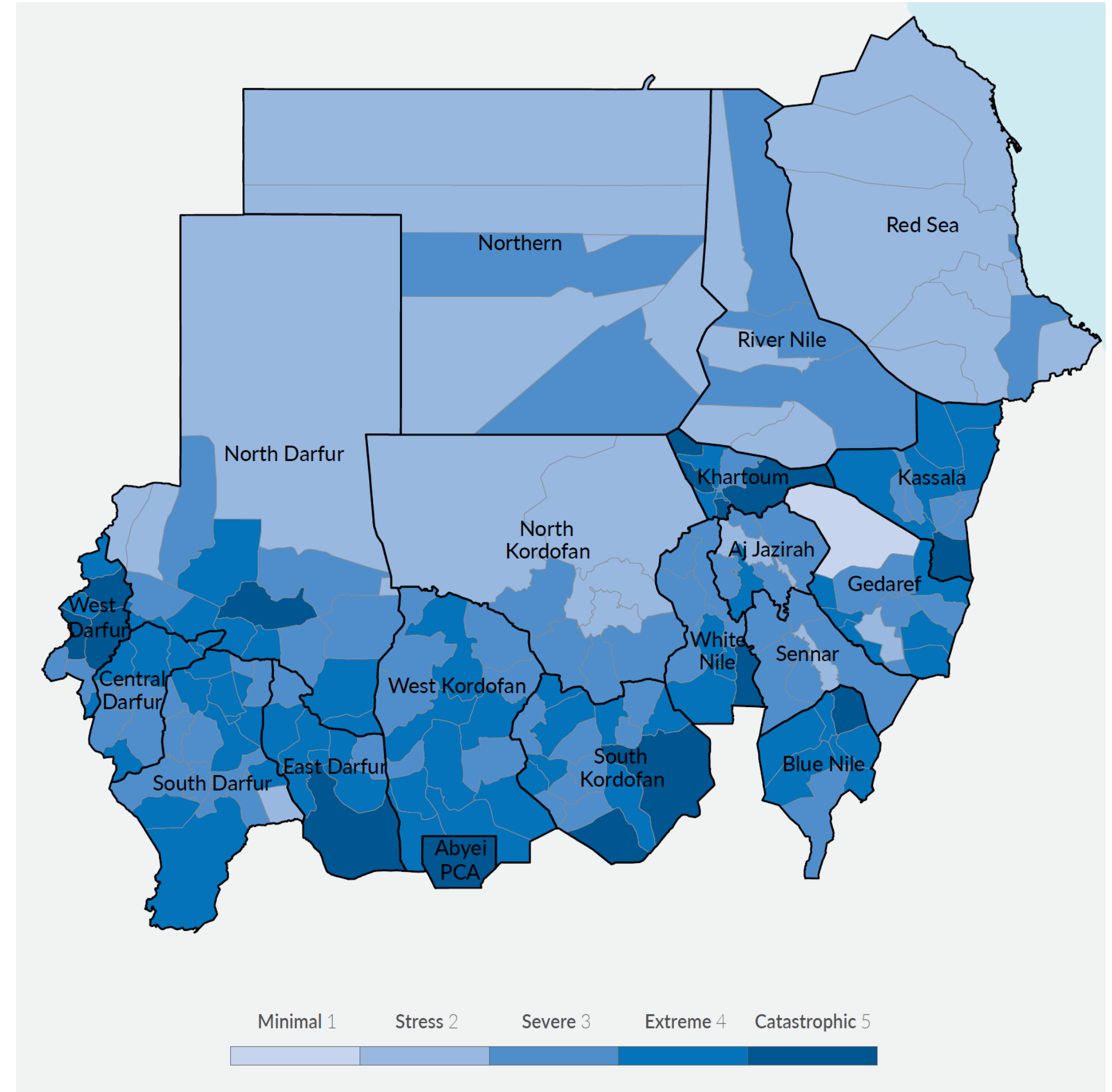
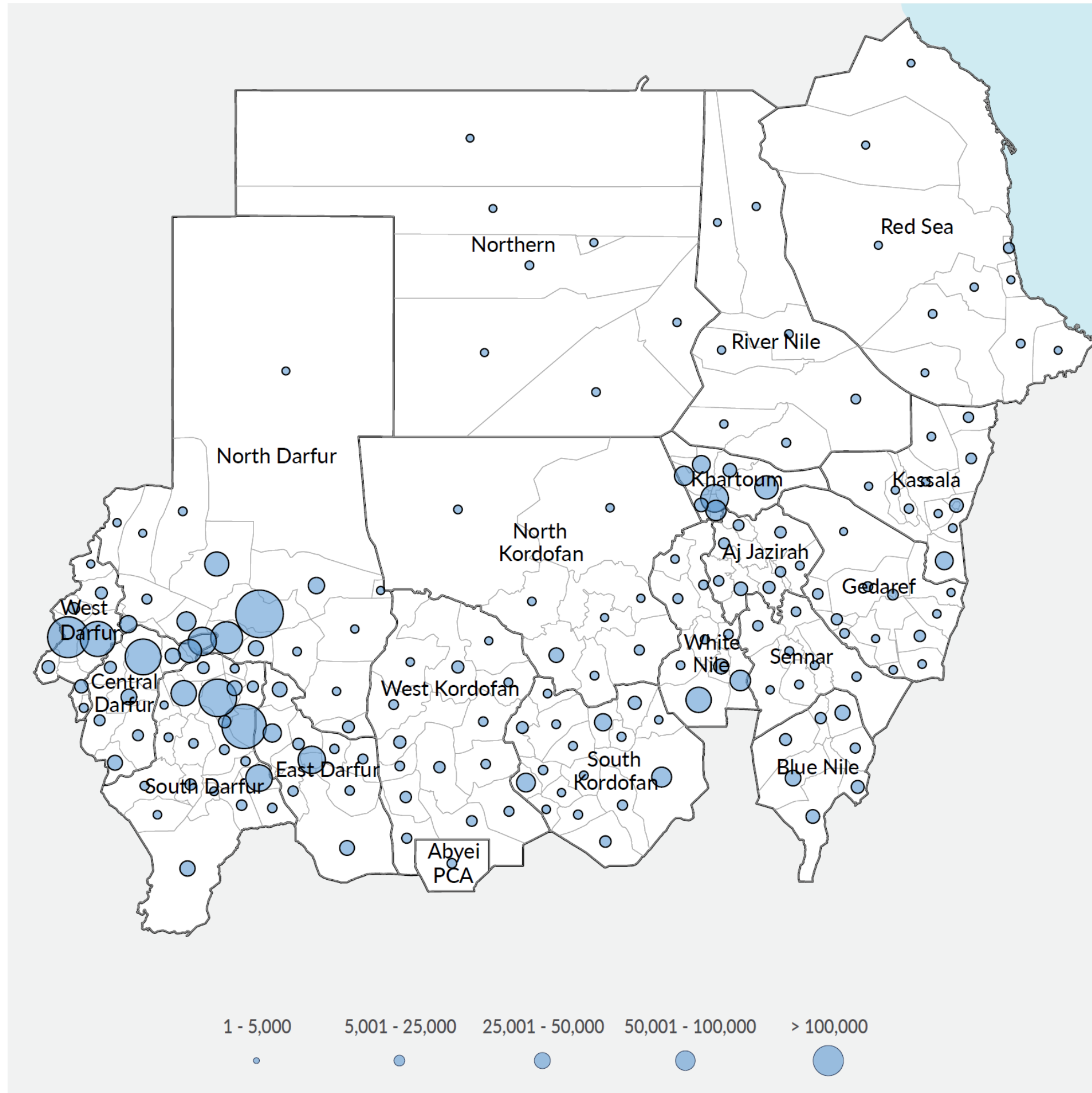
WITH DISABILITY
15%

INTERNALLY DISPLACED PEOPLE
1.5M

VULNERABLE RESIDENTS
670K

RETURNS
411K

REFUGEES
374K



Response Scenarios:

- People displaced to camps or gathering sites, including public buildings or public space/ in the open.
- People staying with friends or family – harder to identify.
- People in transit, accumulating at the borders and in-country transit locations.
- Additional layer of the flood season starting now.

Activities:

(Price increase percentage: 70 to 80%)

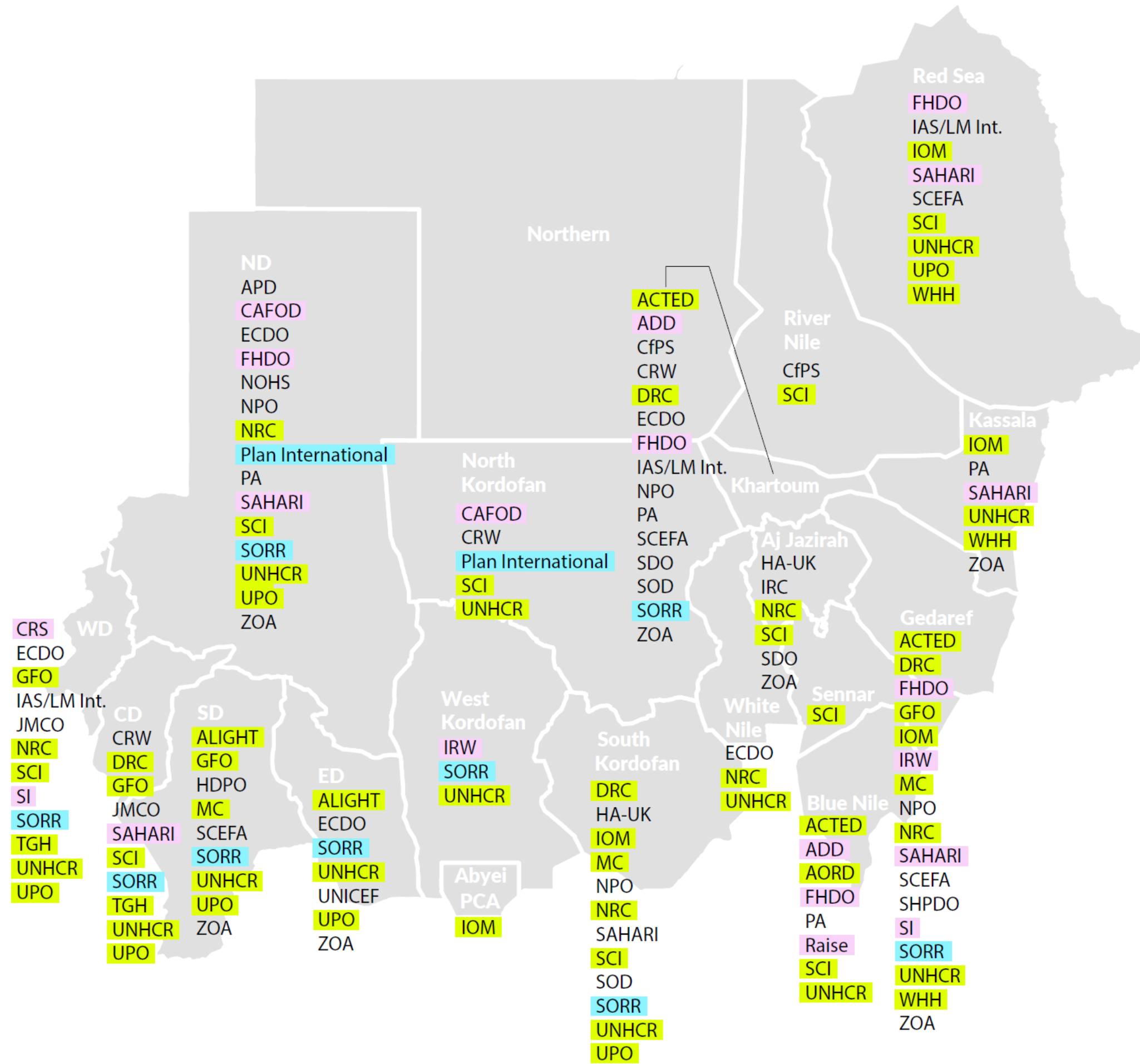
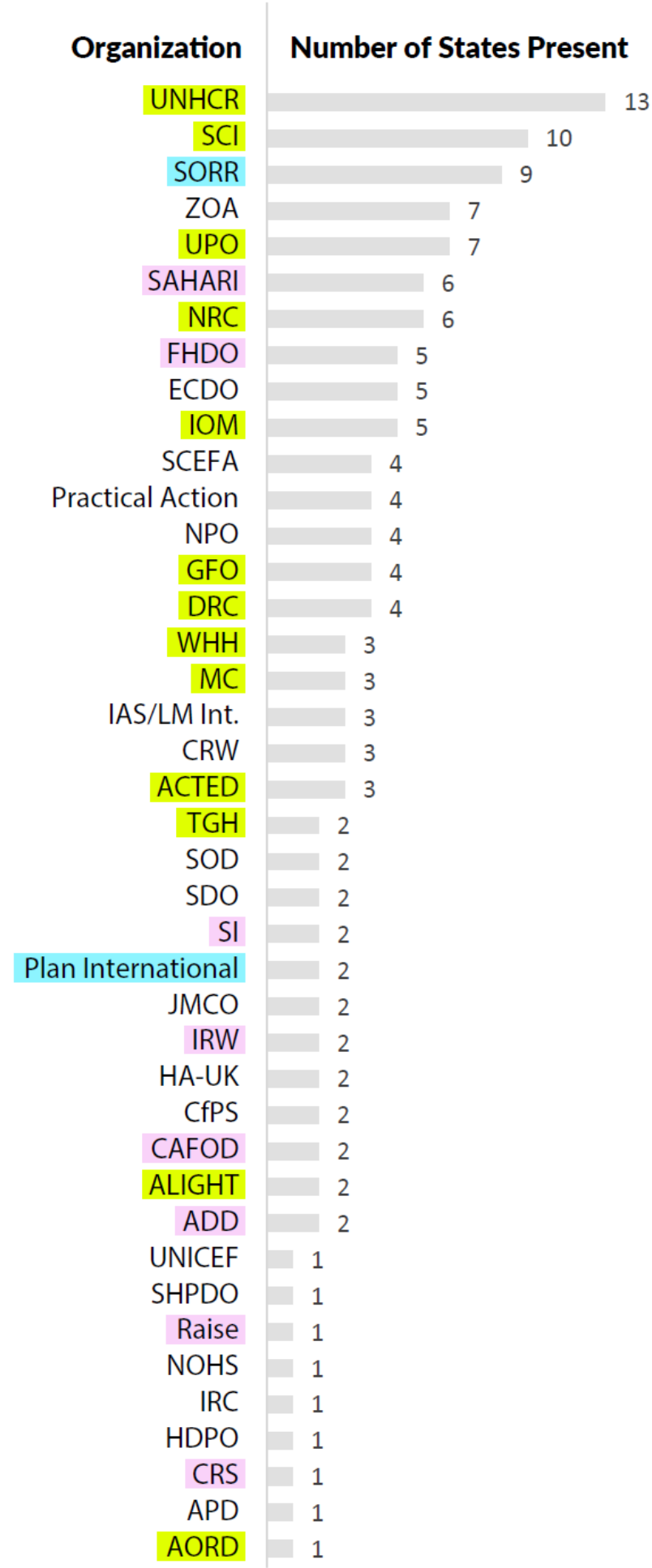
- NFI kit distribution(**170 USD → 300 USD**)
- Emergency shelter kit - ESK distribution(**250 USD → 450 USD**)
- Tent distribution(**550 USD → 650 USD**)
- Provision of construction materials for shelter repair(**350 USD → 650 USD**)
- Provision of cash/vouchers for NFIs(**170 USD → 300 USD**)
- Provision of cash/vouchers for shelter repair/ emergency shelter(**350 USD → 650 USD**)

Targets per locality

How the target is calculated:																						
if severity 5		80%	of PIN																			
if severity 4		60%																				
if severity 3		40%																				
Percentage of PIN targeted		56%																				
										Total of all activity costs												
										98,437,494												
										Sum activity												
										200,000												
										Unit cost												
										125												
										Cost of activity												
										25,000,025												
										Adjustment units												
										5												
										Female												
										Children (<18)												
										Adults (<60)												
										Elderly (>60)												
										NFI kit distribution												
										Emergency shelter kit distribution												
										Tent distribution												
										Shelter upgrade/maintenance through provision of construction material												
										Provision of durable shelter (Tukuls, Mud-brick houses, etc.)												
										Provision of cash/vouchers for improved emergency shelter												
										Provision of cash/vouchers for transitional/durable shelter												
										General site maintenance												
										Number of households that received NFI kits												
										Number of households that received emergency shelter kits												
										Number of households that received tents												
										Number of households that received construction materials												
										Number of households that received durable shelters												
										Number of households that received cash/vouchers for emergency/improved shelter												
										Number of households that received cash/vouchers for transitional/durable shelter												
										Number of site maintenance activities												
										Household												
										Household												
										Household												
										Household												
										Household												
										Household												
										Household												
										Household												
										Activity												
P-code	STATE	Pcode	LOCALITY	Overall_SEV	Priority	SHL_SEV	SHL_PIN	SHL_PIN_IDP	SHL_PIN_RET	SHL_PIN_VUL	SHL_TAR	SHL_TAR_IDP2	SHL_TAR_RET	SHL_TAR_VUL	SHL_a1	SHL_a2	SHL_a3	SHL_a4	SHL_a5	SHL_a6	SHL_a7	SHL_a8
SD15	Aj Jazirah	SD15034	Al Hasahisa	3	priority 3	3	4,465	-	-	4,465	1,786	-	-	1,786	357	179	-	-	-	-	-	-
SD15	Aj Jazirah	SD15033	Sharg Aj Jazirah	3	priority 3	3	8,540	-	-	8,540	3,416	-	-	3,416	683	342	-	-	-	-	-	-
SD15	Aj Jazirah	SD15032	Um Algura	3	priority 3	3	14,465	-	-	14,465	5,786	-	-	5,786	1157	579	-	-	-	-	-	-
SD08	Blue Nile	SD08104	Baw	4	priority 2	4	21,319	16,123	2,486	2,710	12,791	9,674	1,492	1,626	2260	1,130	-	298	-	-	1,000	2
SD08	Blue Nile	SD08107	Ar Rusayris	3	priority 3	3	23,215	20,264	-	2,951	9,286	8,106	-	1,180	1857	929	-	-	-	464	-	-
SD08	Blue Nile	SD08109	Geisan	3	priority 3	4	19,125	13,358	3,336	2,431	11,475	8,015	2,002	1,459	1895	948	-	400	-	-	-	-
SD08	Blue Nile	SD08110	Wad Al Mahi	4	priority 2	4	4,630	2,588	1,454	588	2,778	1,553	872	353	381	191	-	174	-	-	-	-
SD06	Central Darfur	SD06112	Bendasi	3	priority 3	3	14,893	13,000	-	1,893	5,957	5,200	-	757	1191	596	-	-	-	-	-	-
SD06	Central Darfur	SD06139	Wasat Jabal Marrah	4	priority 2	4	13,597	9,846	2,023	1,728	8,158	5,908	1,214	1,037	1389	695	1,000	243	-	347	-	2
SD06	Central Darfur	SD06130	Mukjar	3	priority 3	3	9,323	8,138	-	1,185	3,729	3,255	-	474	746	373	-	-	-	-	-	-
SD06	Central Darfur	SD06131	Gharb Jabal Marrah	4	priority 1	4	29,906	20,424	5,680	3,802	17,944	12,254	3,408	2,281	2907	1,454	-	682	-	-	-	2
SD06	Central Darfur	SD06132	Shamal Jabal Marrah	4	priority 1	5	74,862	16,282	49,064	9,516	59,890	13,026	39,251	7,613	4128	2,064	5,000	7,850	-	1,032	-	4
SD06	Central Darfur	SD06135	Um Dukhun	4	priority 1	4	9,785	-	8,541	1,244	5,871	-	5,125	746	149	75	-	1,025	-	-	-	-
SD06	Central Darfur	SD06138	Zalingi	3	priority 3	4	161,503	140,973	-	20,530	96,902	84,584	-	12,318	19380	9,690	-	-	-	-	1,000	4
SD05	East Darfur	SD05142	Ad Du'ayn	4	priority 2	4	109,293	69,334	26,066	13,893	65,576	41,600	15,640	8,336	9987	4,994	-	3,128	-	-	1,000	2
SD05	East Darfur	SD05148	Shia'ria	4	priority 2	3	22,919	2,835	17,170	2,914	9,168	1,134	6,868	1,166	460	230	-	1,374	-	-	-	-
SD05	East Darfur	SD05165	Yassin	4	priority 1	4	23,602	72	20,530	3,000	14,161	43	12,318	1,800	369	185	-	2,464	-	-	-	-
SD16	River Nile	SD16013	Barbar	3	priority 3	3	8,955	-	-	8,955	3,582	-	-	3,582	716	358	-	-	-	-	-	-
SD02	North Darfur	SD02169	Al Lait	4	priority 1	3	4,510	3,927	-	583	1,804	1,571	-	233	361	181	-	-	-	-	-	-
SD02	North Darfur	SD02113	Dar As Salam	4	priority 2	4	22,179	19,311	-	2,868	13,307	11,587	-	1,721	2661	1,331	-	-	-	-	-	-
SD02	North Darfur	SD02114	Al Fasher	4	priority 1	5	364,285	293,538	23,641	47,106	291,428	234,830	18,913	37,685	54503	18,589	-	3,783	-	-	2,000	8
SD02	North Darfur	SD02116	Al Koma	4	priority 2	3	3,486	-	3,035	451	1,394	-	1,214	180	36	18	-	243	-	-	-	-
SD02	North Darfur	SD02118	As Serief	4	priority 1	5	11,233	75	9,706	1,452	8,986	60	7,765	1,162	244	122	-	1,553	-	-	-	-
SD02	North Darfur	SD02126	Kelemando	4	priority 2	3	2,073	666	1,139	268	829	266	456	107	75	38	-	91	-	-	-	-
SD02	North Darfur	SD02124	Kebkabiya	4	priority 2	5	5,648	4,917	-	731	4,518	3,934	-	585	904	452	500	-	-	226	-	-
SD02	North Darfur	SD02168	Kernoi	4	priority 2	3	7,252	43	6,271	938	2,901	17	2,508	375	78	39	-	502	-	-	-	-

Total Partners: 41

Shelter & NFI Cluster Partner Presence as of 08/05/2023



Legend:

- HRP Partners
- Partners outside of HRP that implemented S/NFI activities in 2023
- Partners outside of HRP previously active in the S/NFI Cluster (even if only for meeting attendance)

Partners which are not highlighted have not been active in the S/NFI Cluster. They are either looking to get newly involved or have items which may not be household items (e.g. could be WASH, etc.). So we need more time to reach out to them and explore bilaterally.

HRP Partners that haven't reported yet:

- Alshrooq - inputs potentially missing
- UNDP - inputs missing
- Elgossa - inputs potentially missing
- ADRA - inputs missing
- COOPI - inputs missing
- CW - inputs missing
- WVI - inputs missing
- Medair - inputs missing

Non-HRP partners active in 2023 that haven't reported yet:

- GAH - inputs missing

Non-HRP partners previously active that haven't reported yet with possible activities:

- Qatar Charity - inputs possibly missing
- JASMAR - inputs possibly missing
- AHA - inputs possibly missing
- NCA - inputs possibly missing
- SRCS - inputs possibly missing

TO BE COMMUNICATED as soon as possible:

- We are following up on more guidance on the HRP revision process.
- We are following up with OCHA to identify UN offices cross country – mainly in the East – for partners struggling with connectivity to be able to revise/submit their projects.

GENERAL GUIDANCE from the usual HRP process:

- **Only funding from institutional donors or private donations** should be submitted. Funding expected from UN agencies will only be submitted by the respective UN agencies.
 - HRP is an appeal and **does not guarantee funding**. Partners are **expected to fundraise** against their submissions.
 - **Refugee related projects** should be submitted under **RCF** in the online system, **not under the S/NFI Cluster**. Only projects targeting IDPs, returnees and vulnerable residents should be submitted under the S/NFI Cluster.
 - **Costs** included in earlier slides are **only indicative** and are very likely to change, most probably upward.
-

↳ Strategic Advisory Group (SAG)



Our SAG plans were interrupted by the crisis so we are streamlining the procedure in order to have a committee to:

- Set the strategic direction of the cluster during the emergency, including drafting of relevant strategic documents and such.
- Facilitate the Flash Appeal/HRP process, including informing the needs analysis, funding requirement calculations, drafting of sectoral chapters, review of partner projects, etc.
- Review pooled-fund parameters and allocation strategies.
- Act as SRC as needed.
- Draft Key Messages and Advocacy/ Communications & Resource Mobilization strategies.

