



Shelter, NFI and CCCM gap analysis

Myanmar, Quarter 3, 2023



Shelter Cluster Myanmar
ShelterCluster.org
Coordinating Humanitarian Shelter

1,219,360
people targeted

780,755
people reached

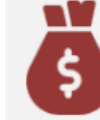
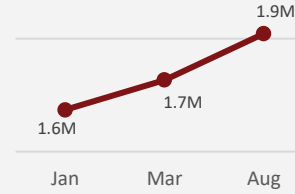
Source: [Myanmar Humanitarian Response Plan 2023](#)



2,605,700
total number of IDPs

61,800
displaced to other countries

Source: [UNHCR Displacement Overview \(18 December 2023\)](#)



\$7.5M
received

\$31.8M
committed

\$124.1M
required

\$84.8M
gap

Source: [Myanmar Humanitarian Response Plan 2023](#) | [Financial Tracking Service \(unocha.org\)](#)

North-West



17
Organizations



1,369,100
Displaced people

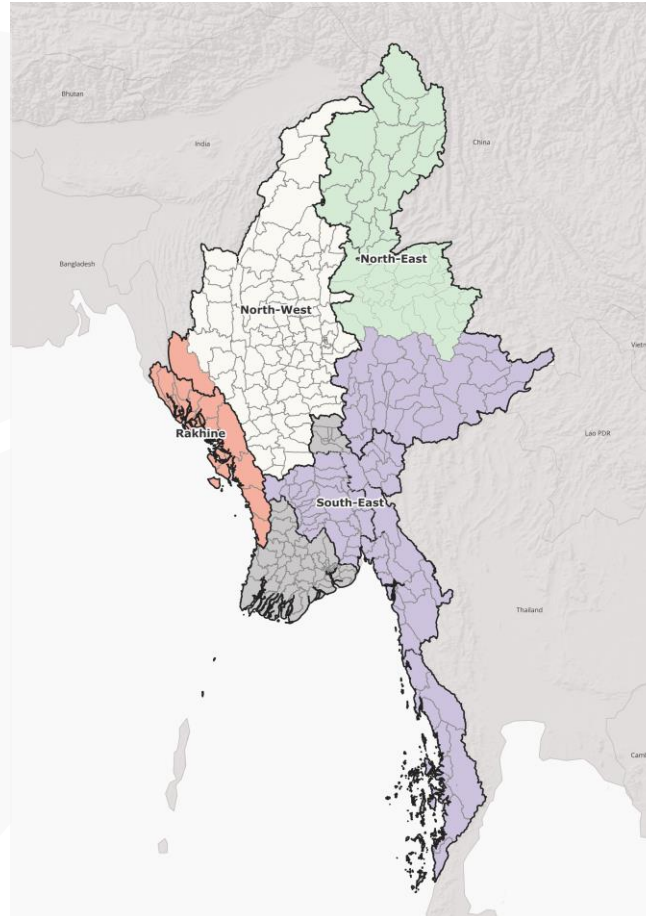
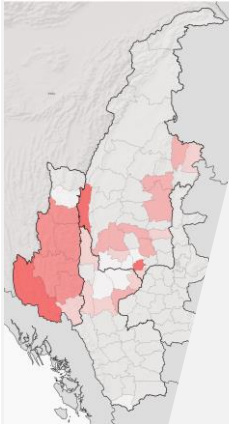
Distribution of Non-Food Items



Emergency Shelter Support



Camp Coordination and Camp Management



North-East



15
Organizations



226,400
Displaced people

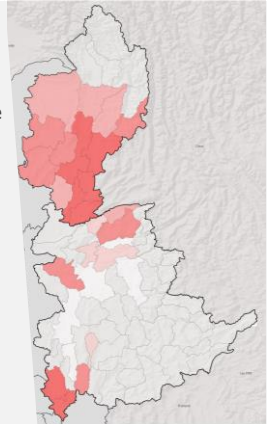
Distribution of Non-Food Items



Emergency Shelter Support



Camp Coordination and Camp Management



Rakhine

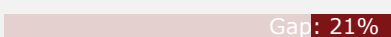


17
Organizations



330,800
Displaced people

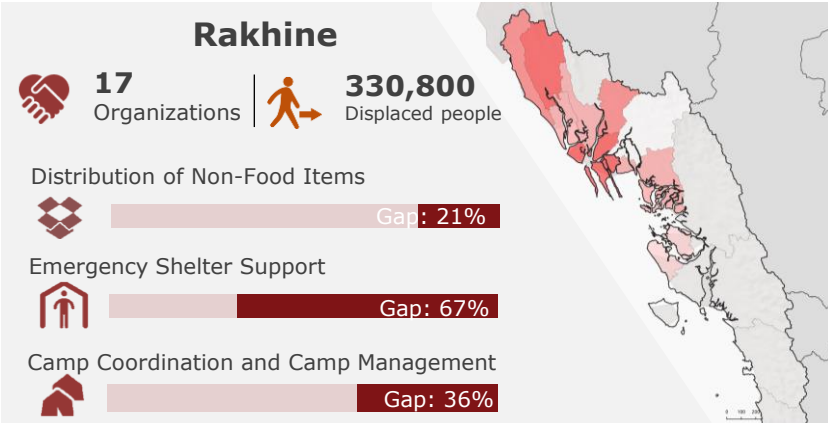
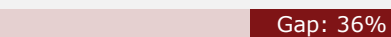
Distribution of Non-Food Items



Emergency Shelter Support



Camp Coordination and Camp Management



South-East



11
Organizations



679,400
Displaced people

Distribution of Non-Food Items



Emergency Shelter Support



Camp Coordination and Camp Management

